



FOR SALE

GUIDE PRICE £1,999,995

FREEHOLD

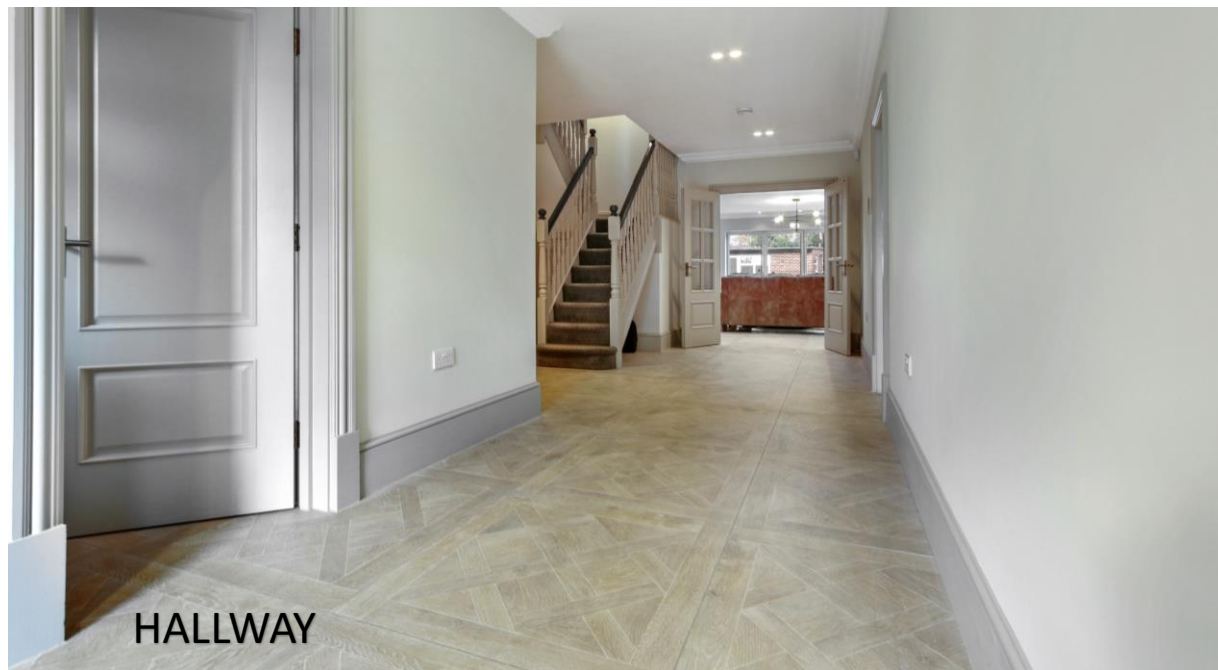
**LUXURY DESIGN THROUGHOUT
HIGH SPECIFICATION KITCHEN
UNDERFLOOR HEATING
GATED ENTRANCE
OUTBUILDING
CCTV
0.25 ACRES**

**TO ARRANGE A VIEWING CALL
0203 561 6689**

Brandon House | Red Hill | Denham | UB9 4LE

5 BEDROOMS | 4 BATHROOMS | DETACHED | 4214 Sq. ft







HIGH SPECIFICATION GERMAN KITCHEN
LARGE ISLAND
QUARTZ WORKTOP
HIGH END APPLIANCES



SECOND KITCHEN



GARDEN | OUTBUILDING



LAUNDRY ROOM



FAMILY BATHROOM



WALK IN WARDROBE/DRESSER



PRINCIPAL BEDROOM

2ND BEDROOM



3RD BEDROOM



4TH BEDROOM

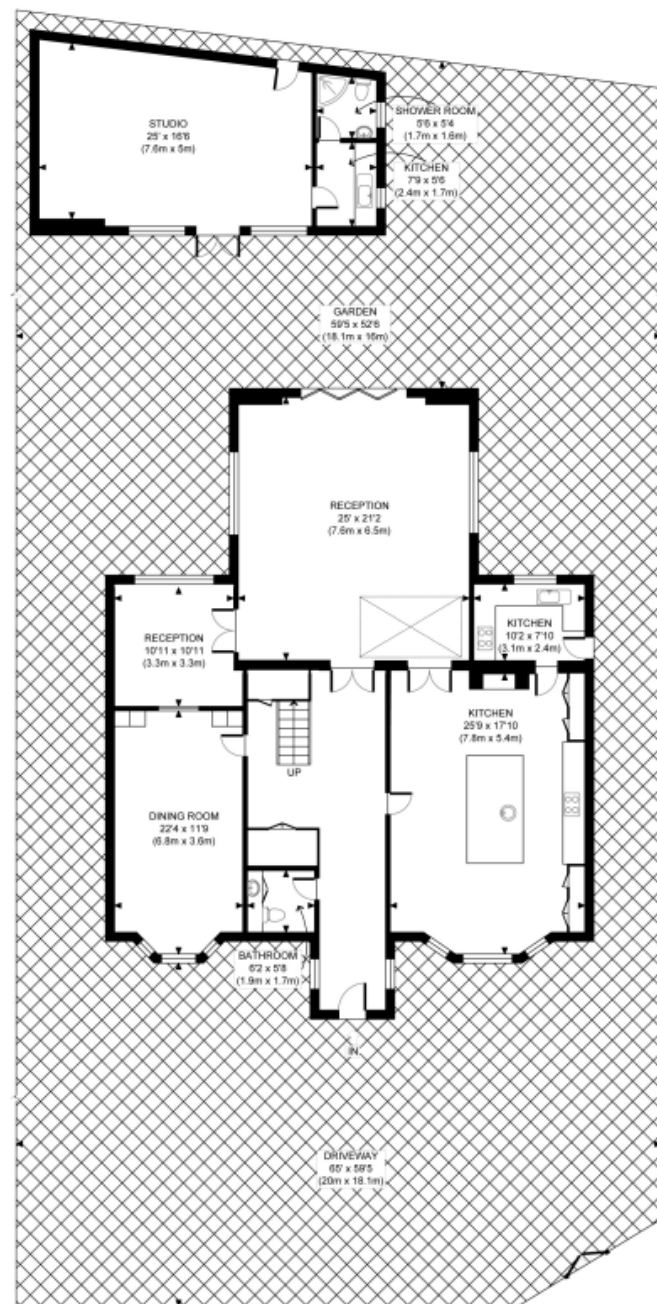


5TH BEDROOM





REAR GARDEN

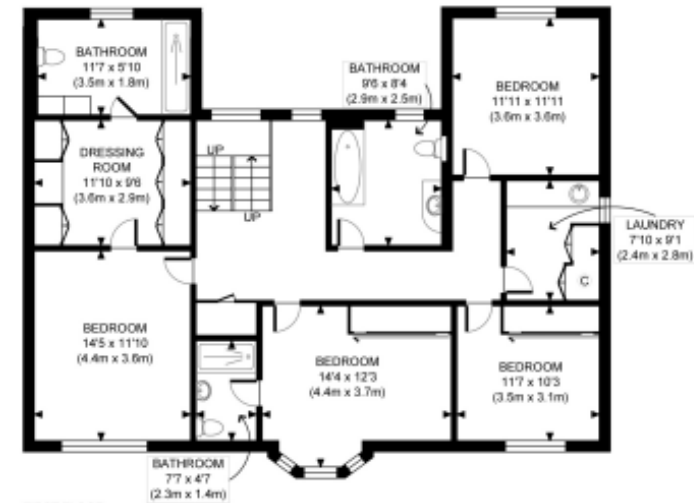


GROUND FLOOR
GROSS INTERNAL
FLOOR AREA 1811 SQ FT

FLOORPLAN



SECOND FLOOR
GROSS INTERNAL
FLOOR AREA 662 SQ FT



FIRST FLOOR
GROSS INTERNAL
FLOOR AREA 1238 SQ FT

APPROX. GROSS INTERNAL FLOOR AREA WITH STUDIO 4214 SQ FT / 391 SQM
APPROX. GROSS INTERNAL FLOOR AREA WITHOUT STUDIO 3741 SQ FT / 348 SQM
Disclaimer: Floor plan measurements are approximate and are for illustrative purposes only.
While we do not doubt the floor plan accuracy and completeness, you or your advisors should
conduct a careful, independent investigation of the property in respect of monetary situation.

A stunning and elegant detached family home located within the wonderful location of Denham, Uxbridge.

Set in 0.25 acres of land, a beautifully constructed 4214 sq. ft property with a gated driveway to accommodate over 5 cars.

The Home provides generously proportioned living accommodation arranged over Ground, First & Second floors.

FOR ALL ENQUIRES CONTACT:

Jas Ghattaora | M: +44 7967 660359

Real Estate Agent – West London

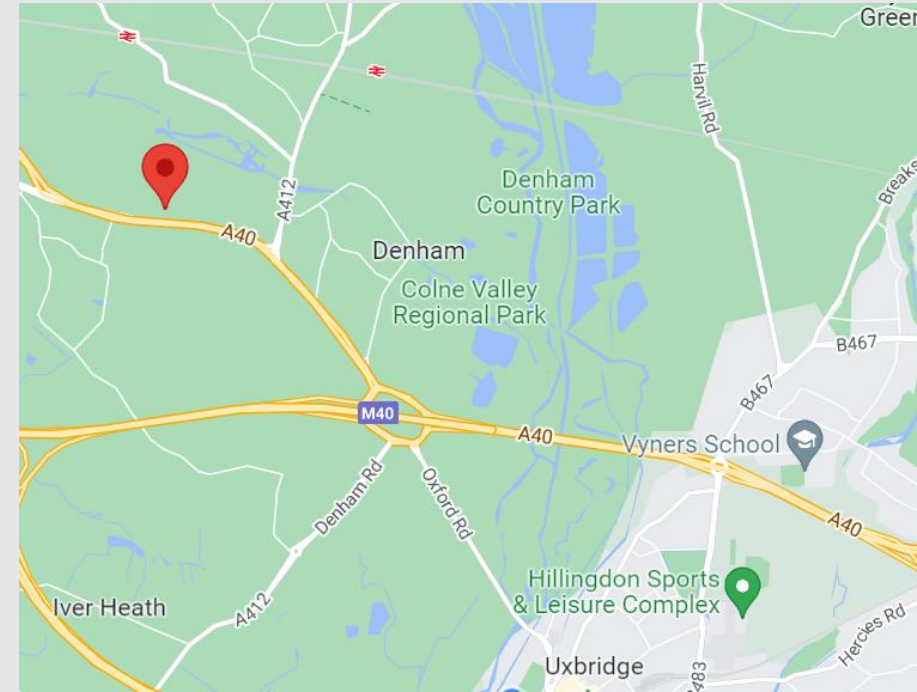
E: jas@luxurylivinghomes.co.uk

L: 0203 561 6689

www.luxurylivinghomes.co.uk

71-75 Shelton Street, Covent Garden, London, WC2H 9JQ

Important notice: Luxury Living Homes International, their clients and any joint agents give notice that 1: They are not authorised to make or give any representations or warranties in relation to the property either here or elsewhere, either on their own behalf or on behalf of their client or otherwise. They assume no responsibility for any statement that may be made in these particulars. These particulars do not form part of any offer or contract and must not be relied upon as statements or representations of fact. 2: Any areas, measurements or distances are approximate. Plot sizes and dimensions are taken from Promap and are approximate. The text, photographs and plans are for guidance only and are not necessarily comprehensive. It should not be assumed that the property has all necessary planning, building regulation or other consents and Luxury Living Homes International have not tested any services, equipment, or facilities. Purchasers must satisfy themselves by inspection or otherwise.



**LUXURY LIVING HOMES
INTERNATIONAL**