

JUMEIRAH LIVING MARINA GATE  
**2 YEAR PAYMENT PLAN AVAILABLE**



## 2 YEAR PAYMENT PLAN

INSTALLMENT	MILESTONE	PAYMENT
1	On Reservation	10%
2	* On Handover (within 30 days)	40%
3	Every 6 months	12.5%
4	Every 6 months	12.5%
5	Every 6 months	12.5%
6	Every 6 months	12.5%
* SPA and DLD registration to be processed upon receipt of handover payment AED 525 DSA registration fee payable to the developer.		

## 4% REGISTRATION FEE WAIVER\*

HIGHLIGHTS
Ready to move in
Development managed by Jumeirah™
Stunning waterfront views
Unrivalled location in Dubai Marina
A dedicated guest relations team offering lifestyle concierge services
Enrollment to Jumeirah™ loyalty programs
Resident's lounge with alfresco dining
Luxurious infinity pool
State of the art gymnasium
Wide array of convenience retail on ground level
Direct access to Marina Walk

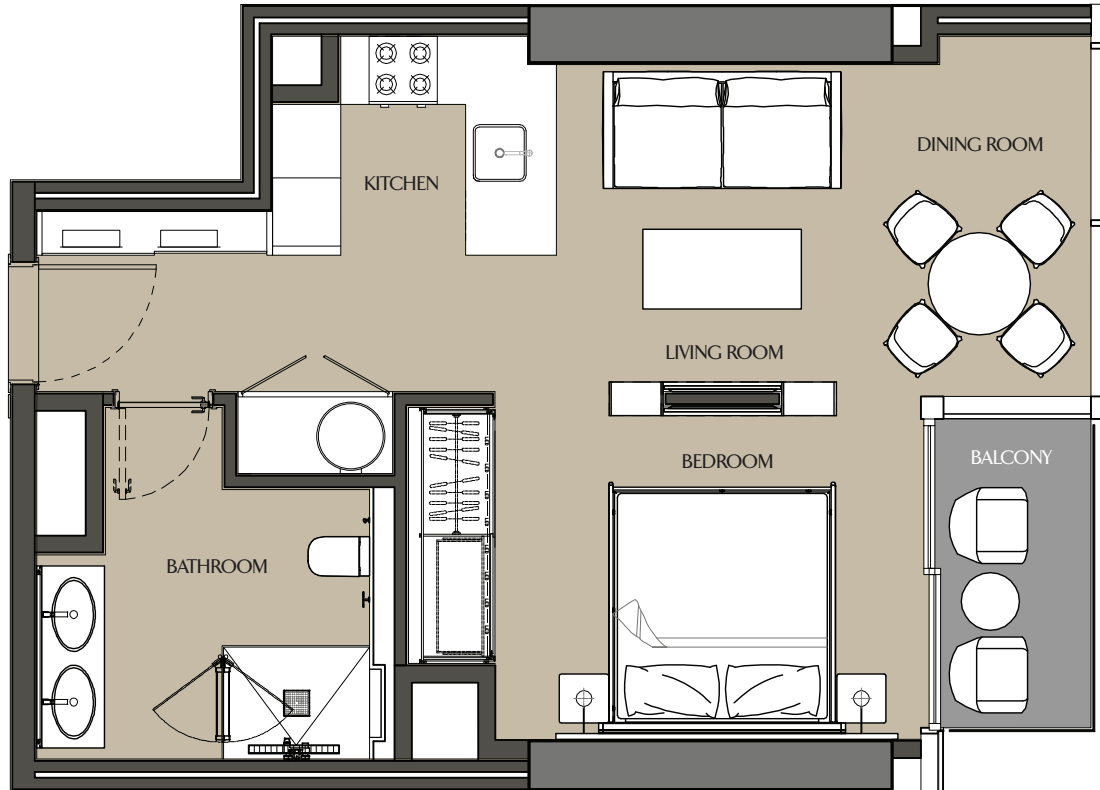
\* Select Group will no longer pay the 4% DLD registration fee post 28<sup>th</sup> February.

UNIT NUMBER	VIEWS	TYPE	UNIT AREA	INTERNAL AREA	EXTERNAL AREA	LIST PRICE (AED)
JMG-3003	JBR View	SA	609.24	570.06	39.18	1,534,700.00
JMG-3612	Full Marina View	1A	976.50	849.16	127.34	2,525,180.00
JMG-3712	Full Marina View	1A	976.50	849.16	127.34	2,377,240.00
JMG-3801	Full Marina View	1A	976.72	849.38	127.34	2,379,300.00
JMG-4101	Full Marina View	1A	975.54	848.2	127.34	2,385,480.00
JMG-3206	City View	1B	945.29	901.91	43.38	1,794,870.00
JMG-3307	City View	1B	945.18	901.91	43.27	1,797,075.00
JMG-3506	City View	1B	945.29	901.91	43.38	1,801,485.00
JMG-3507	City View	1B	945.18	901.91	43.27	1,801,485.00
JMG-3606	City View	1B	945.29	901.91	43.38	1,803,690.00
JMG-5206	City View	1B	942.81	899.54	43.27	1,867,635.00
JMG-5306	City View	1B	942.81	899.54	43.27	1,874,250.00
JMG-2004	Pool View	1C	835.71	784.90	50.81	1,835,460.00
JMG-4903	JBR View	1D	790.72	739.91	50.81	1,903,018.00
JMG-2603	JBR View	1D	790.51	739.70	50.81	1,717,952.00
JMG-3404	JBR View	1D	791.47	740.66	50.81	1,738,834.00
JMG-4004	JBR View	1D	791.47	740.66	50.81	1,754,969.00
JMG-3110	Pool View	1E	794.81	744.00	50.81	1,694,803.20
JMG-3910	Pool View	1E	794.81	744	50.81	1,701,724.80
JMG-3102	Full Marina View	2A	1,524.06	1,300.92	223.14	3,606,000.00
JMG-3502	Full Marina View	2A	1524.06	1300.92	223.14	3,617,000.00
JMG-4002	Full Marina View	2A	1,524.06	1,300.92	223.14	3,631,000.00
JMG-2109	Pool View	2B	1,462.82	1,372.94	89.88	2,823,900.00
JMG-2207	City View	2C	1,423.74	1,331.39	92.35	2,493,000.00
JMG-2304	City View/Sea Facing	2C	1,421.48	1,329.34	92.14	2,515,000.00

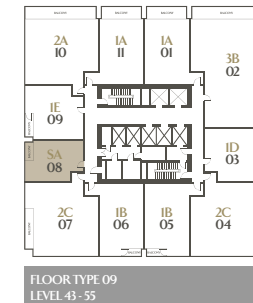
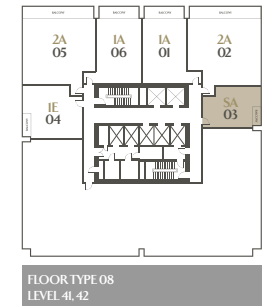
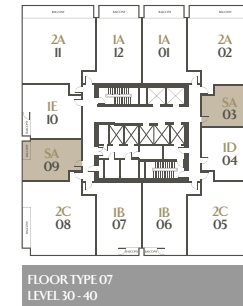
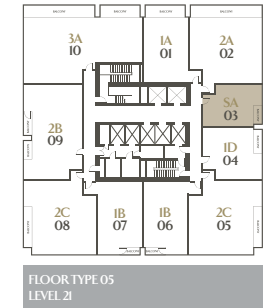
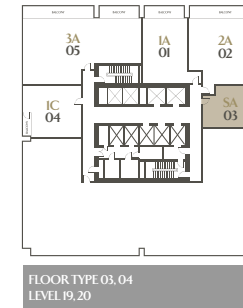
UNIT NUMBER	VIEWS	TYPE	UNIT AREA	INTERNAL AREA	EXTERNAL AREA	LIST PRICE (AED)
JMG-2307	City View	2C	1,423.74	1,331.39	92.35	2,495,000.00
JMG-2804	City View/Sea Facing	2C	1421.48	1329.34	92.14	2,567,000.00
JMG-3308	City View	2C	1422.45	1330.1	92.35	2,514,000.00
JMG-3905	City View/Sea Facing	2C	1422.12	1329.77	92.35	2,577,000.00
JMG-4005	City View/Sea Facing	2C	1,422.12	1,329.77	92.35	2,629,560.00
JMG-2308	Pool View	2D	1,416.64	1,326.76	89.88	2,563,000.00
JMG-2908	Pool View	2D	1,418.36	1,328.48	89.88	2,574,000.00
JMG-2702	Full Marina View	3B	2,130.28	1,867.86	262.42	4,694,000.00
JMG-2902	Full Marina View	3B	2,130.28	1,867.86	262.42	4,703,000.00
JMG-5202	Full Marina View	3B	2,131.47	1,868.94	262.53	4,862,000.00
JMG-0302	Full Marina View	V6	2,496.47	2,175.28	321.09	6,750,000.00

# EXECUTIVE STUDIO - SA

## LEVELS 19-21, 30-55

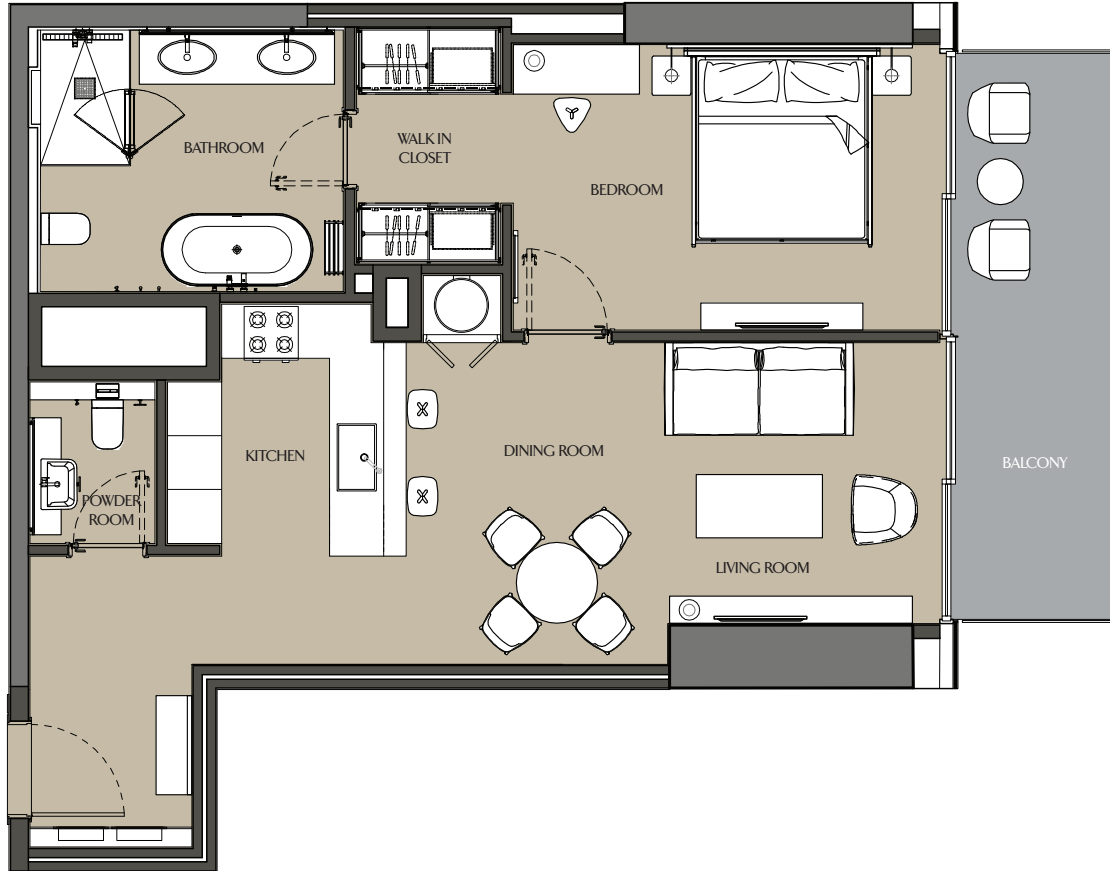


Apartment Area	52.96 m <sup>2</sup>	570.06 ft <sup>2</sup>
Balcony Area	3.64 m <sup>2</sup>	39.18 ft <sup>2</sup>
Total Area	56.60 m <sup>2</sup>	609.24 ft <sup>2</sup>

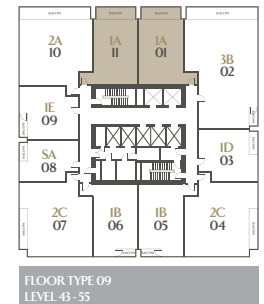
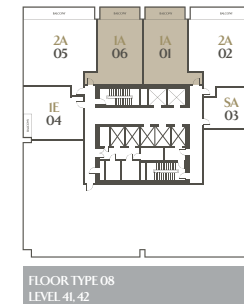
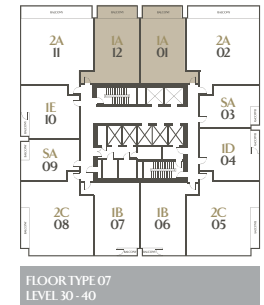
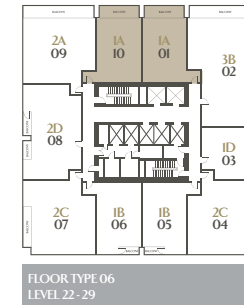
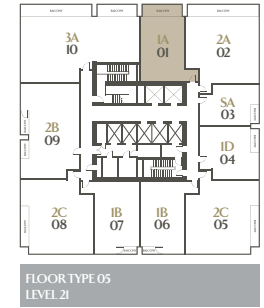
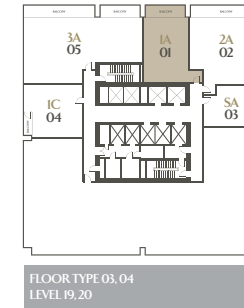


# ONE BEDROOM - 1A

## LEVELS 19-55

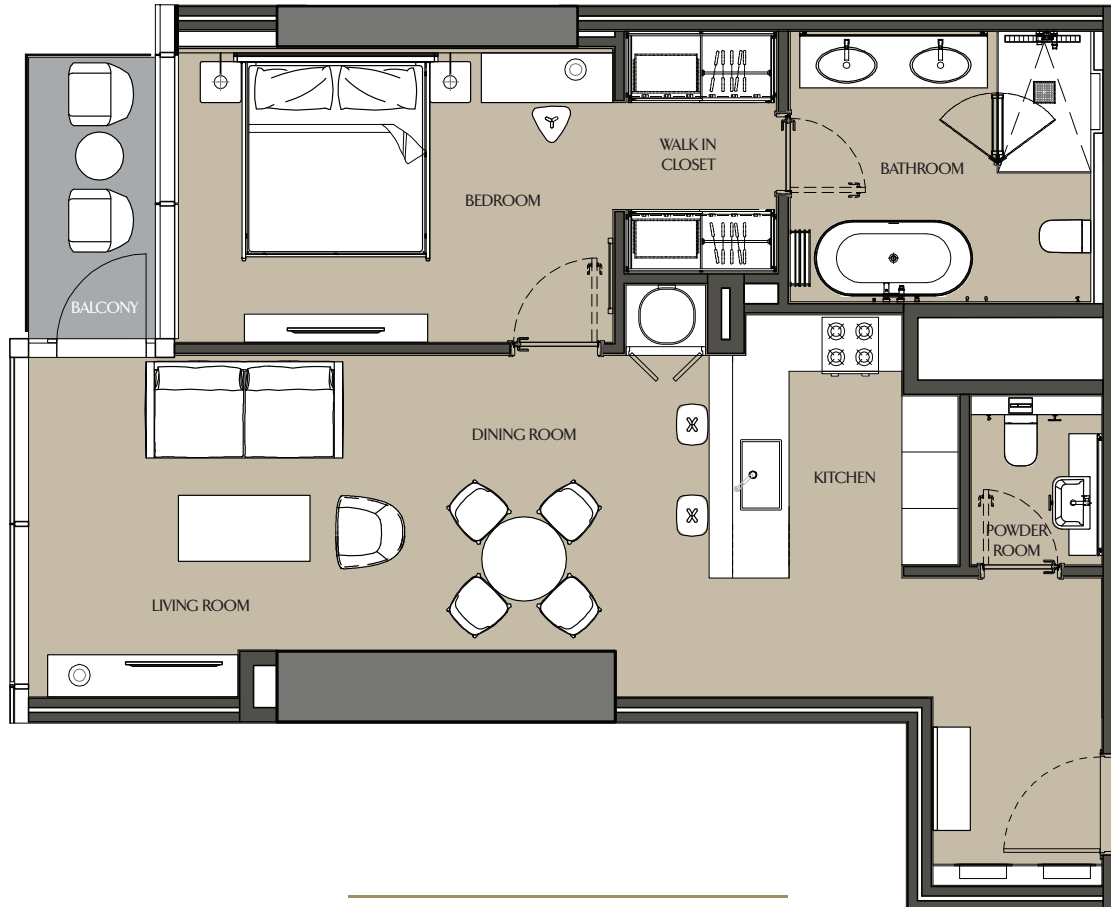


Apartment Area	78.89 m <sup>2</sup>	849.16 ft <sup>2</sup>
Balcony Area	11.83 m <sup>2</sup>	127.34 ft <sup>2</sup>
Total Area	90.72 m <sup>2</sup>	976.50 ft <sup>2</sup>



# ONE BEDROOM - 1B

## LEVELS 21-40, 43-55

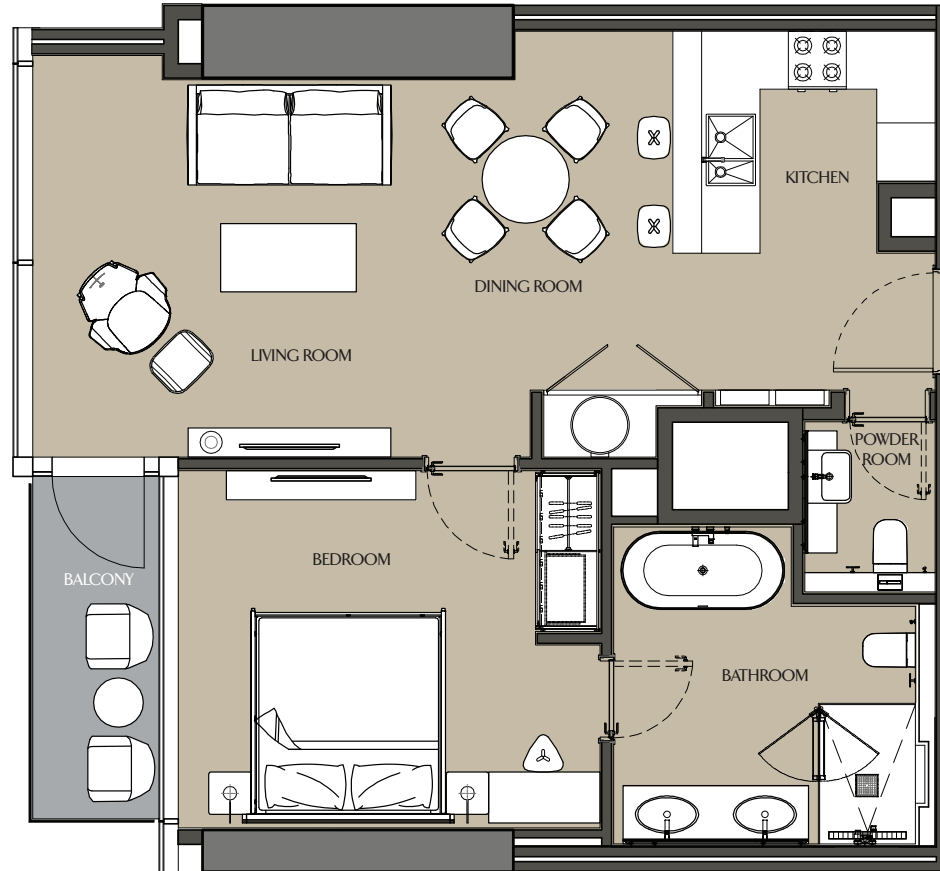


Apartment Area	8357 m <sup>2</sup>	89954 ft <sup>2</sup>
Balcony Area	4.02 m <sup>2</sup>	43.27 ft <sup>2</sup>
Total Area	8759 m <sup>2</sup>	942.81 ft <sup>2</sup>

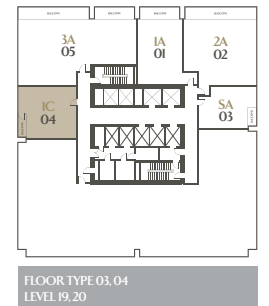


# ONE BEDROOM - 1C

## LEVELS 19, 20



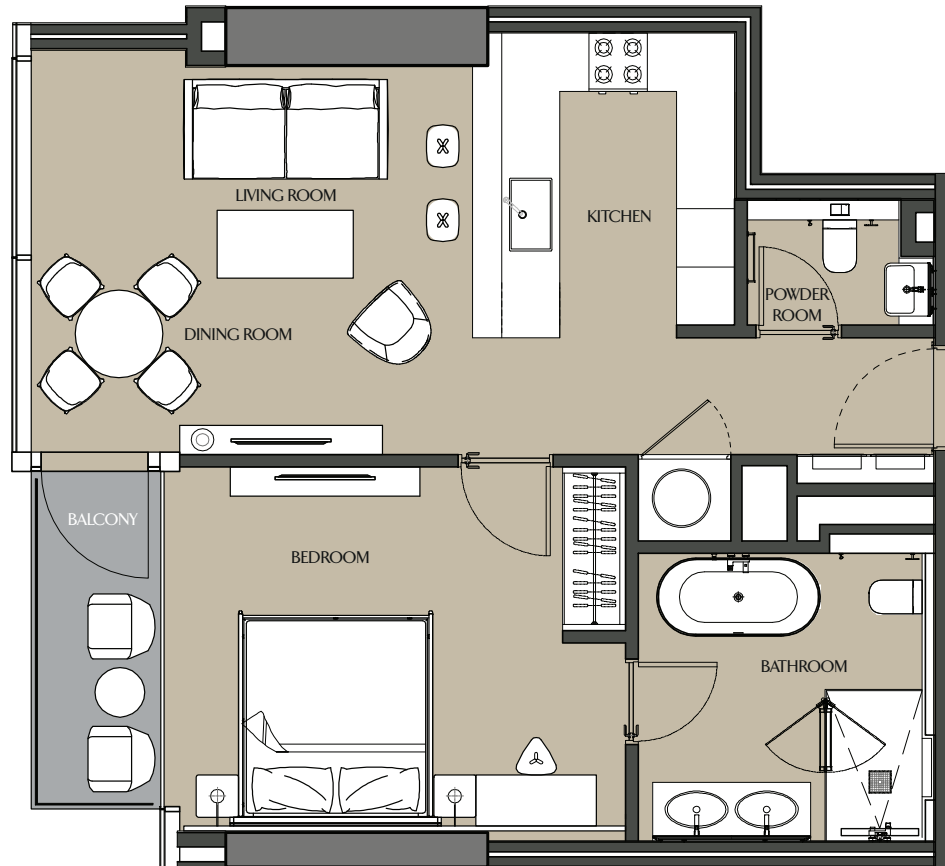
Apartment Area	72.92 m <sup>2</sup>	784.90 ft <sup>2</sup>
Balcony Area	4.72 m <sup>2</sup>	50.81 ft <sup>2</sup>
Total Area	77.64 m <sup>2</sup>	835.71 ft <sup>2</sup>





# ONE BEDROOM - 1E

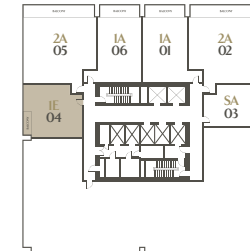
## LEVELS 30-55



Apartment Area	69.12 m <sup>2</sup>	744.00 ft <sup>2</sup>
Balcony Area	4.72 m <sup>2</sup>	50.81 ft <sup>2</sup>
Total Area	73.84 m <sup>2</sup>	794.81 ft <sup>2</sup>



FLOOR TYPE 07  
LEVEL 30-40



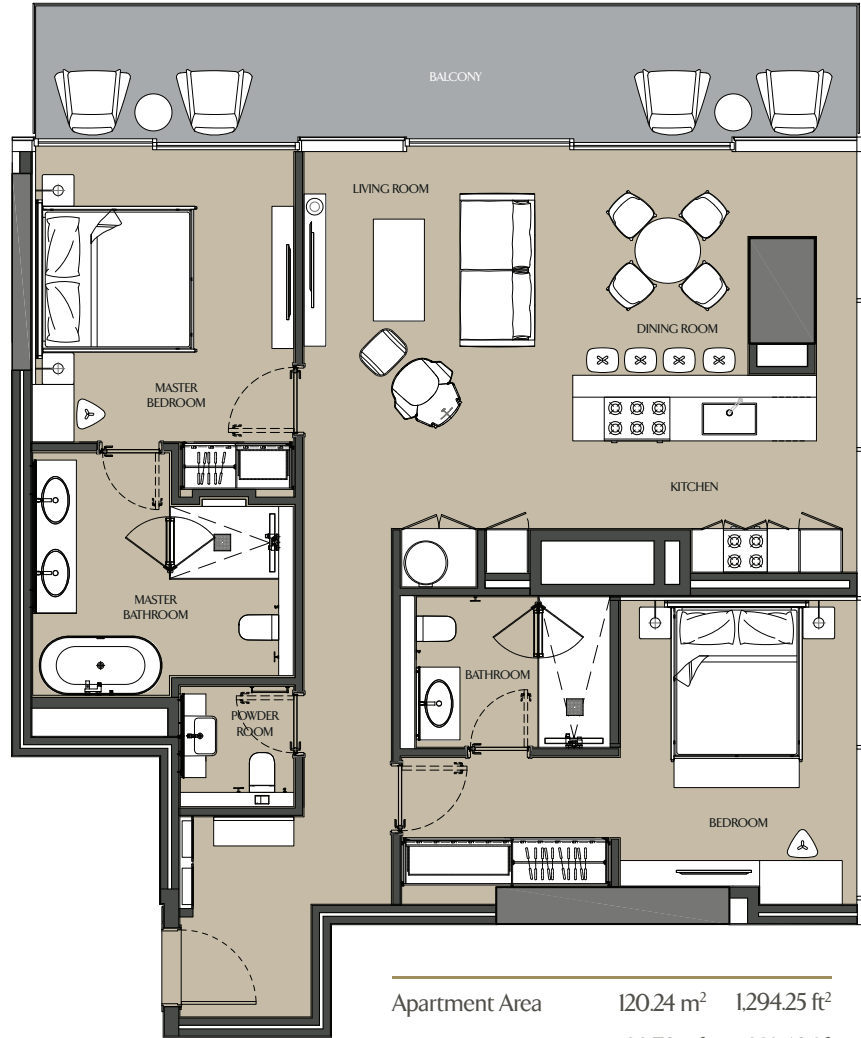
FLOOR TYPE 08  
LEVEL 41-42



FLOOR TYPE 09  
LEVEL 43-55

# TWO BEDROOM - 2A

## LEVELS 19-55



Apartment Area	120.24 m <sup>2</sup>	1,294.25 ft <sup>2</sup>
Balcony Area	20.76 m <sup>2</sup>	223.46 ft <sup>2</sup>
Total Area	141.00 m <sup>2</sup>	1,517.71 ft <sup>2</sup>



FLOOR TYPE 03, 04  
LEVEL 19, 20



FLOOR TYPE 05  
LEVEL 21



FLOOR TYPE 06  
LEVEL 22 - 29



FLOOR TYPE 07  
LEVEL 30 - 40



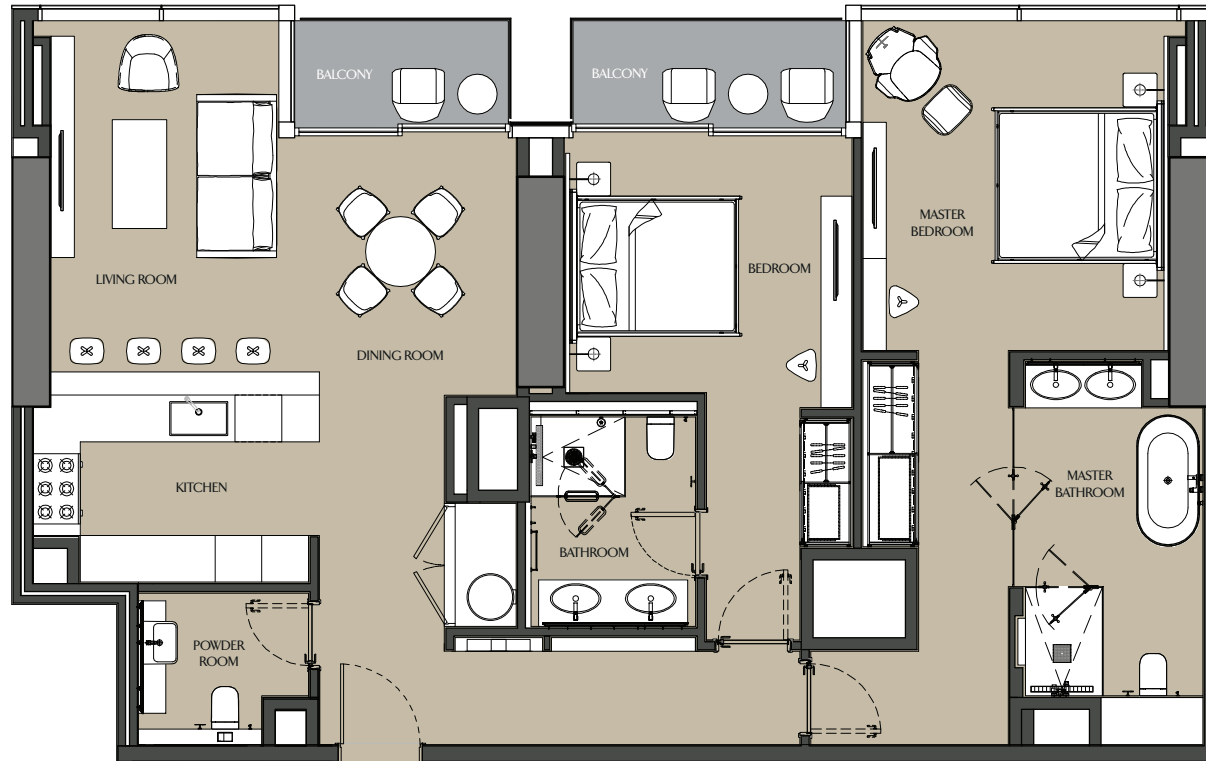
FLOOR TYPE 08  
LEVEL 41, 42



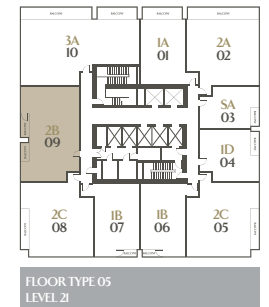
FLOOR TYPE 09  
LEVEL 43 - 55

# TWO BEDROOM - 2B

## LEVEL 21

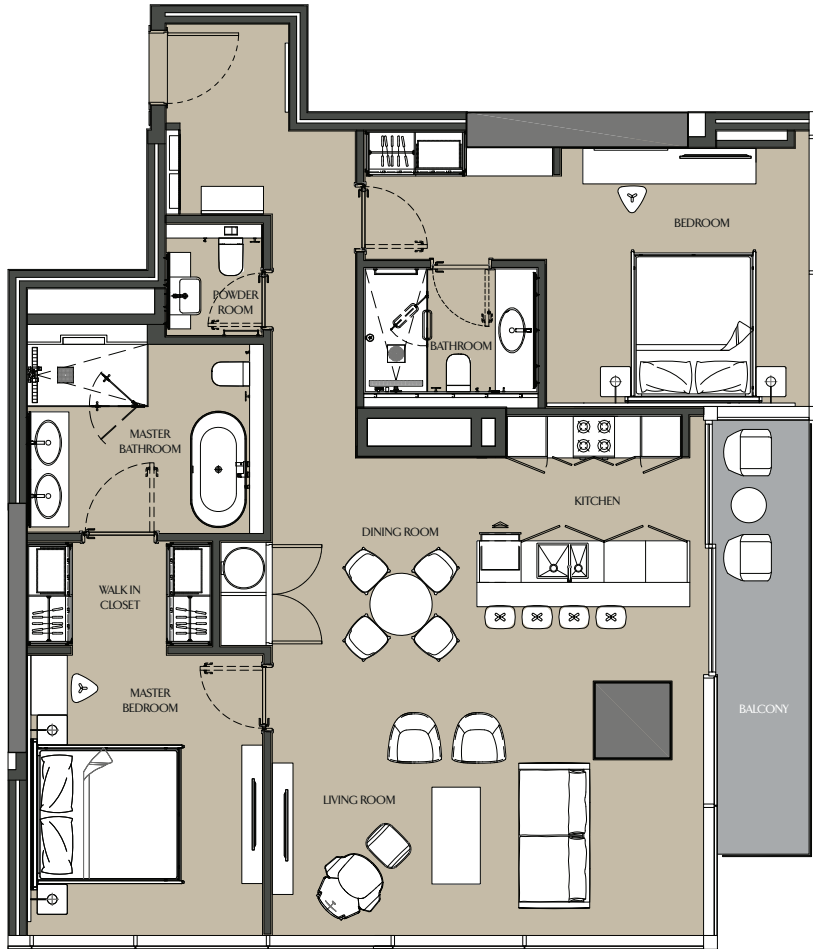


Apartment Area	127.55 m <sup>2</sup>	1,372.94 ft <sup>2</sup>
Balcony Area	8.35 m <sup>2</sup>	89.88 ft <sup>2</sup>
Total Area	135.90 m <sup>2</sup>	1,462.82 ft <sup>2</sup>



# TWO BEDROOM - 2C

## LEVELS 21-40, 43-55



Apartment Area	12350 m <sup>2</sup>	1,329.34 ft <sup>2</sup>
Balcony Area	856 m <sup>2</sup>	92.14 ft <sup>2</sup>
Total Area	132.06 m <sup>2</sup>	1,421.48 ft <sup>2</sup>



FLOOR TYPE 05  
LEVEL 21



FLOOR TYPE 06  
LEVEL 22 - 29



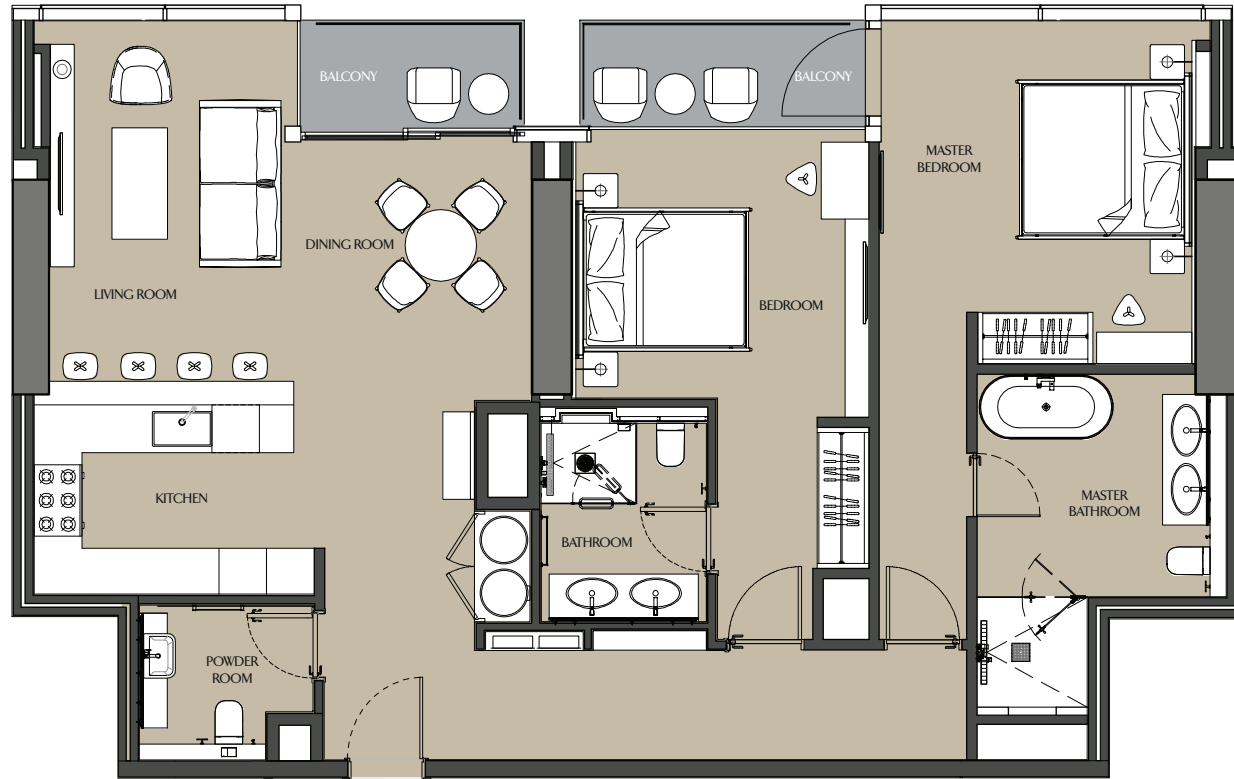
FLOOR TYPE 07  
LEVEL 30 - 40



FLOOR TYPE 09  
LEVEL 43 - 55

# TWO BEDROOM - 2D

## LEVELS 22-29

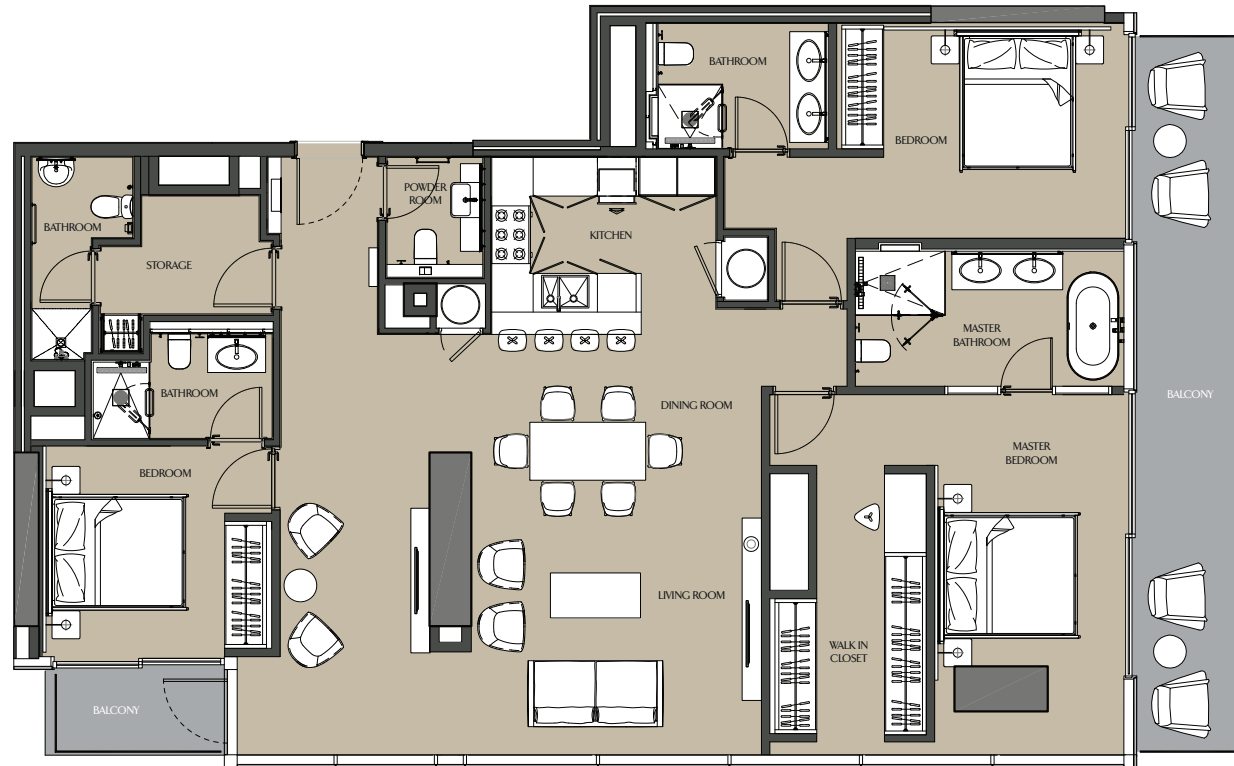


FLOOR TYPE 06  
LEVEL 22 - 29

Apartment Area	123.26 m <sup>2</sup>	1326.76 ft <sup>2</sup>
Balcony Area	8.35 m <sup>2</sup>	89.88 ft <sup>2</sup>
Total Area	131.61m <sup>2</sup>	1,416.64 ft <sup>2</sup>

# THREE BEDROOM - 3B

## LEVELS 22-29, 43-55



Apartment Area	173.53 m <sup>2</sup>	1,867.86 ft <sup>2</sup>
Balcony Area	24.38 m <sup>2</sup>	262.42 ft <sup>2</sup>
Total Area	197.91 m <sup>2</sup>	2,130.28 ft <sup>2</sup>



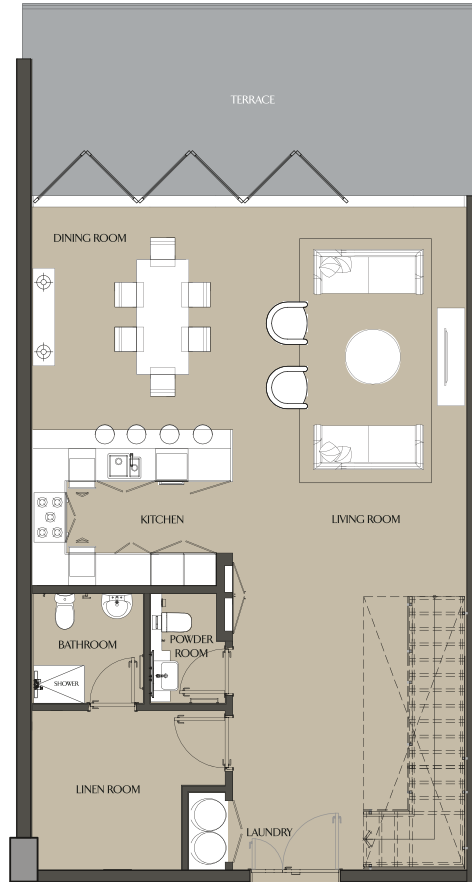
FLOOR TYPE 06  
LEVEL 22-29



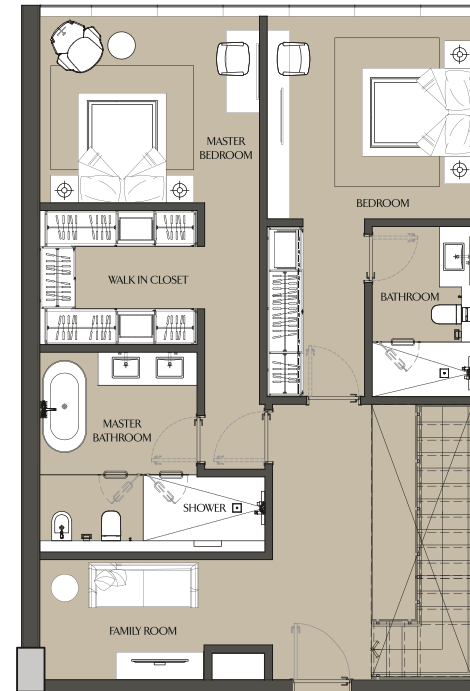
FLOOR TYPE 09  
LEVEL 43-55

# TWO BEDROOM VILLA

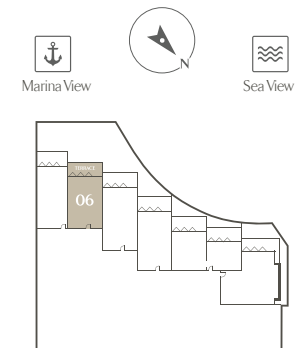
## VILLA 06 - 302 | PODIUM 3 & 4



LOWER LEVEL



UPPER LEVEL



Apartment Area	190.31 m <sup>2</sup>	2048.48 ft <sup>2</sup>
Balcony Area	29.26 m <sup>2</sup>	314.95 ft <sup>2</sup>
Total Area	219.57 m <sup>2</sup>	2363.43 ft <sup>2</sup>