

JUMEIRAH LIVING MARINA GATE
2 YEAR PAYMENT PLAN ON FULLY FURNISHED UNITS



2 YEAR PAYMENT PLAN

INSTALLMENT	MILESTONE	PAYMENT
1	On Reservation	10%
2	* On Handover (within 30 days)	40%
3	Every 6 months	12.5%
4	Every 6 months	12.5%
5	Every 6 months	12.5%
6	Every 6 months	12.5%
* SPA and DLD registration to be processed upon receipt of handover payment AED 525 DSA registration fee payable to the developer.		

4% REGISTRATION FEE WAIVER

HIGHLIGHTS
Ready to move in
Development managed by Jumeirah™
Stunning waterfront views
Unrivalled location in Dubai Marina
A dedicated guest relations team offering lifestyle concierge services
Enrollment to Jumeirah™ loyalty programs
Resident's lounge with alfresco dining
Luxurious infinity pool
State of the art gymnasium
Wide array of convenience retail on ground level
Direct access to Marina Walk

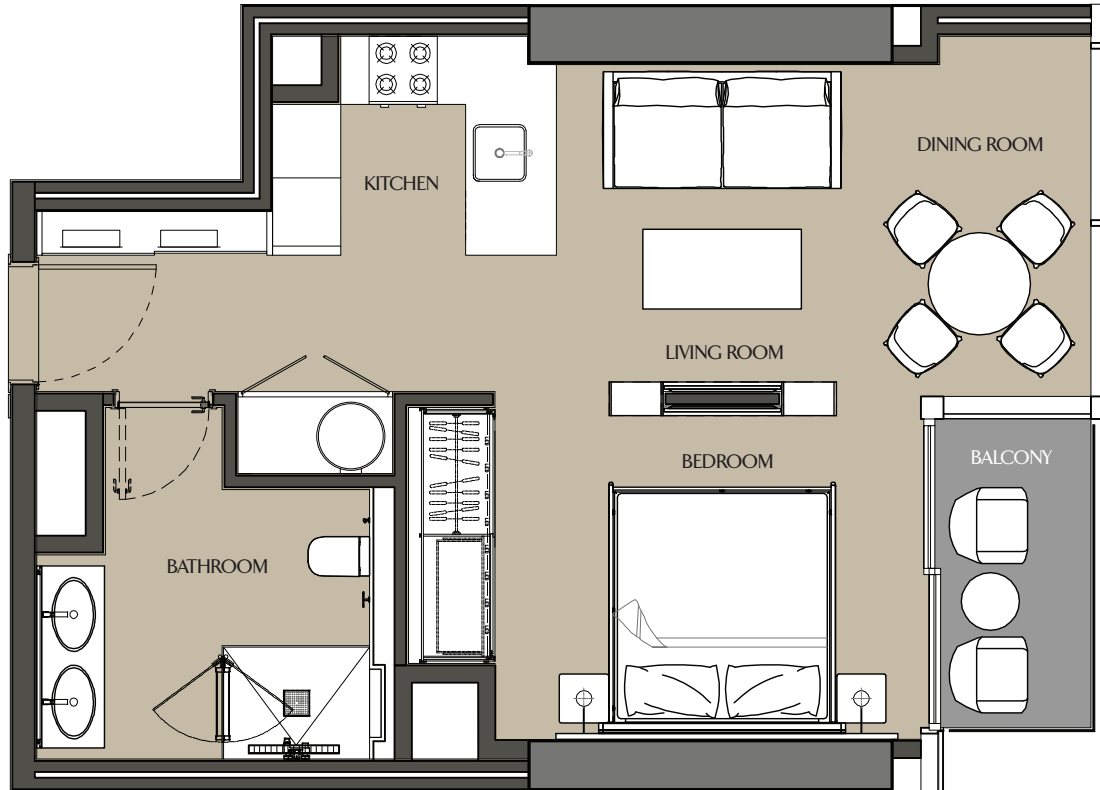
* Select Group will no longer pay the 4% DLD registration fee post 28th February.

The following units are fully furnished and pricing is reflective of all the furnishings contained in these units.

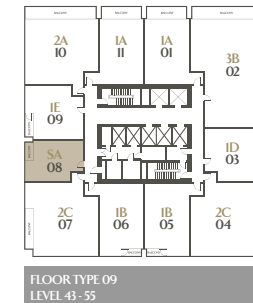
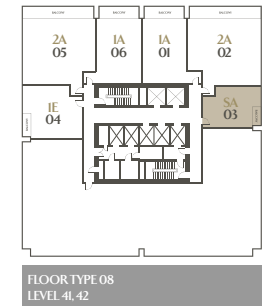
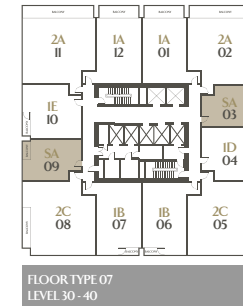
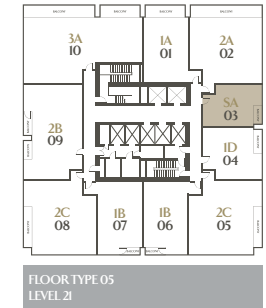
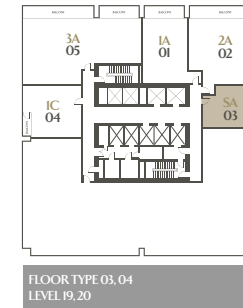
UNIT NUMBER	VIEWS	TYPE	UNIT AREA	INTERNAL AREA	EXTERNAL AREA	LIST PRICE (AED)
JMG-5408	Pool View	SA	611.28	572.21	39.07	1,569,650.00
JMG-4901	Full Marina View	1A	977.04	849.49	127.55	2,482,988.00
JMG-5411	Full Marina View	1A	976.82	849.38	127.44	2,543,404.00
JMG-5405	City View	1B	942.7	899.43	43.27	1,965,865.00
JMG-5406	City View	1B	942.81	899.54	43.27	1,965,865.00
JMG-4909	Pool View	1E	794.81	744.00	50.81	1,854,672.00
JMG-4910	Full Marina View	2A	1,515.56	1,292.10	223.46	3,779,157.00
JMG-4904	City View/Sea Facing	2C	1,426.64	1,334.29	92.35	2,854,038.00
JMG-4902	Full Marina View	3B	2131.47	1868.94	262.53	5,132,123.00

EXECUTIVE STUDIO - SA

LEVELS 19-21, 30-55

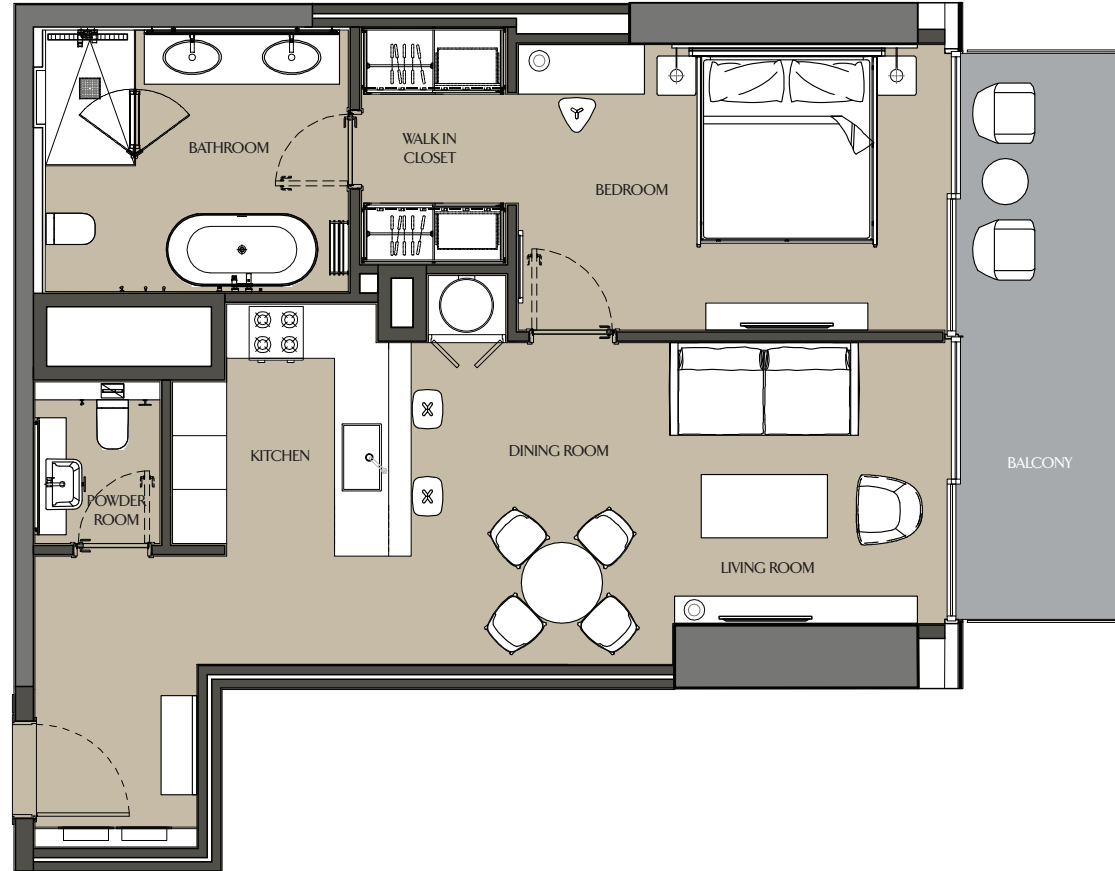


Apartment Area	53.16 m ²	572.21 ft ²
Balcony Area	3.63 m ²	39.07 ft ²
Total Area	56.79 m ²	611.28 ft ²



ONE BEDROOM - 1A

LEVELS 19-55

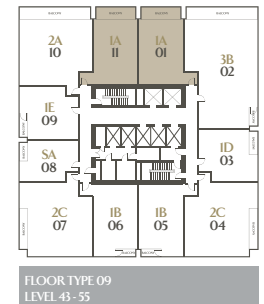
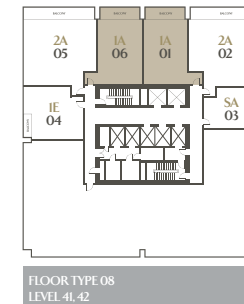
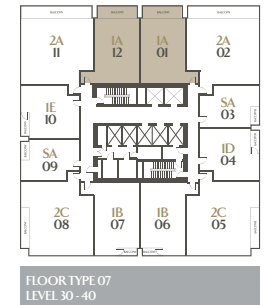
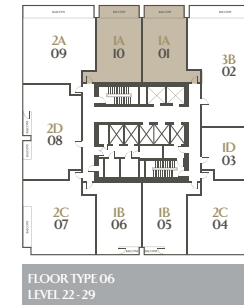
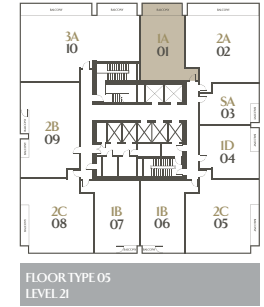
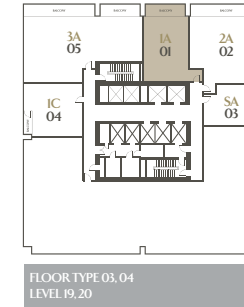


Apartment Area	78.89 m ²	849.16 ft ²
Balcony Area	11.83 m ²	127.34 ft ²
Total Area	90.72 m ²	976.50 ft ²

Marina View

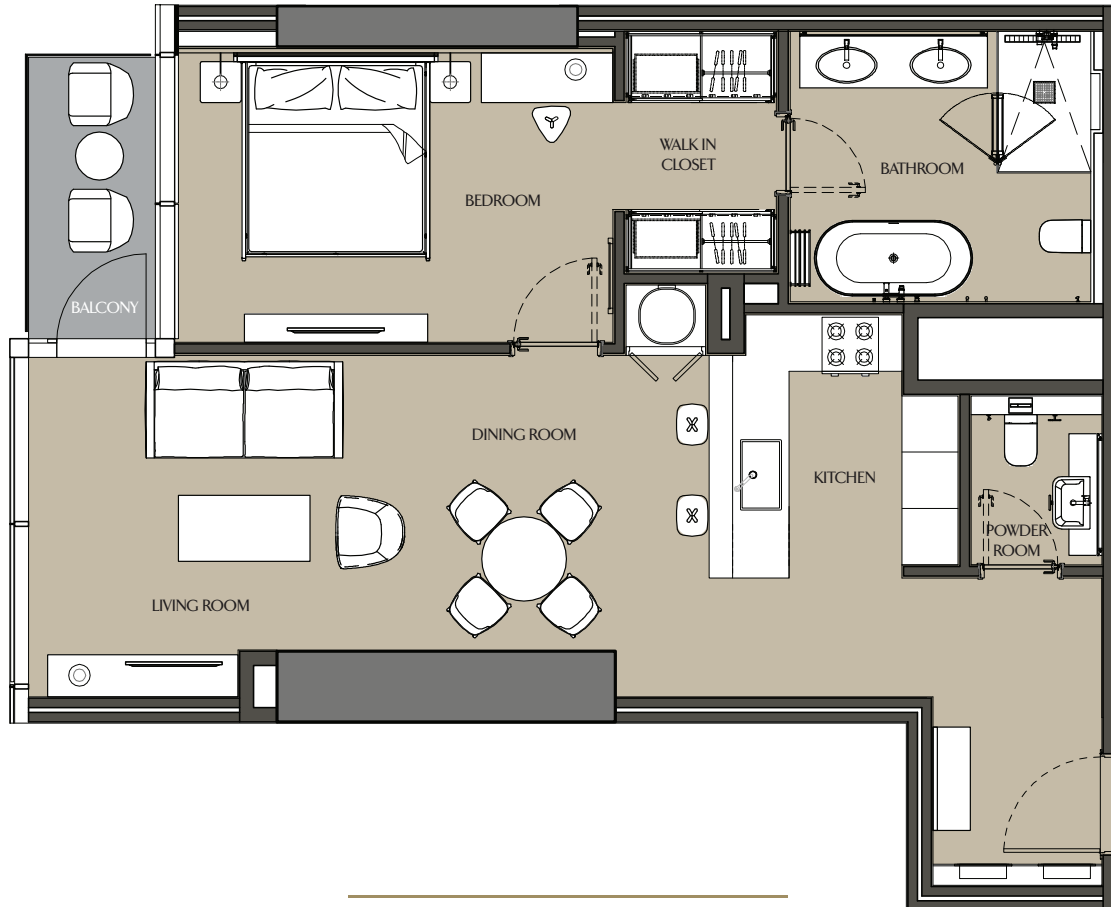


Sea View



ONE BEDROOM - 1B

LEVELS 21-40, 43-55

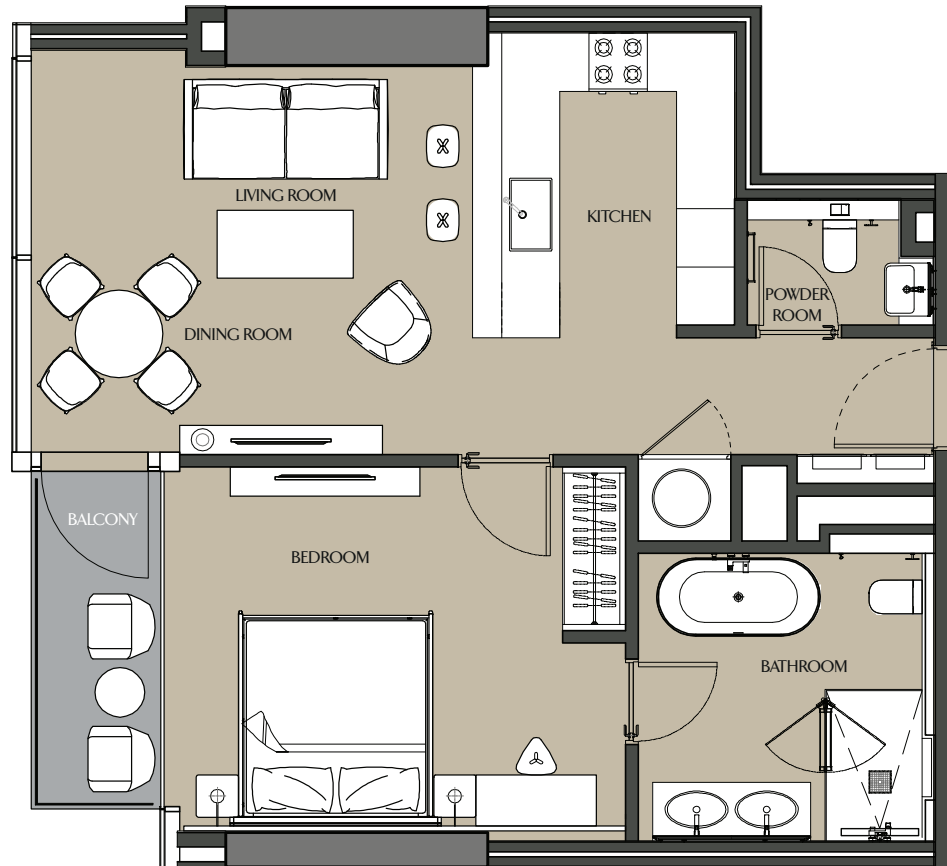


Apartment Area	83.55 m ²	899.43 ft ²
Balcony Area	4.02 m ²	43.27 ft ²
Total Area	87.57 m ²	942.70 ft ²

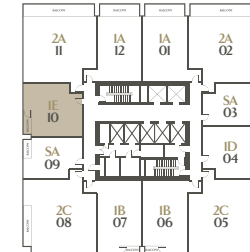


ONE BEDROOM - 1E

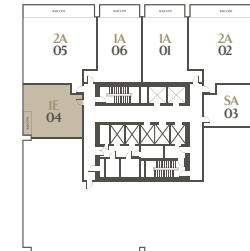
LEVELS 30-55



Apartment Area	69.12 m ²	744.00 ft ²
Balcony Area	4.72 m ²	50.81 ft ²
Total Area	73.84 m ²	794.81 ft ²



FLOOR TYPE 07
LEVEL 30-40



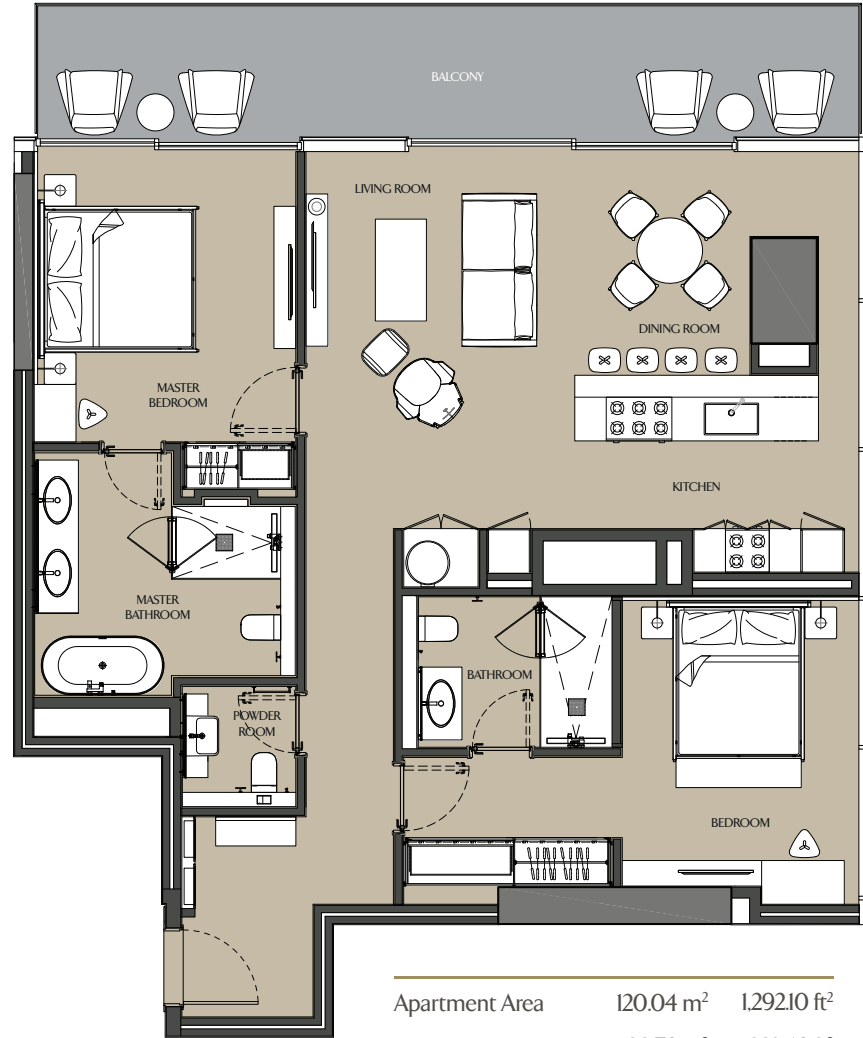
FLOOR TYPE 08
LEVEL 41-42



FLOOR TYPE 09
LEVEL 43-55

TWO BEDROOM - 2A

LEVELS 19-55



Apartment Area	120.04 m ²	1,292.10 ft ²
Balcony Area	20.76 m ²	223.46 ft ²
Total Area	141.80 m ²	1,515.56 ft ²

Marina View



Sea View



FLOOR TYPE 03, 04
LEVEL 19, 20



FLOOR TYPE 05
LEVEL 21



FLOOR TYPE 06
LEVEL 22 - 29



FLOOR TYPE 07
LEVEL 30 - 40



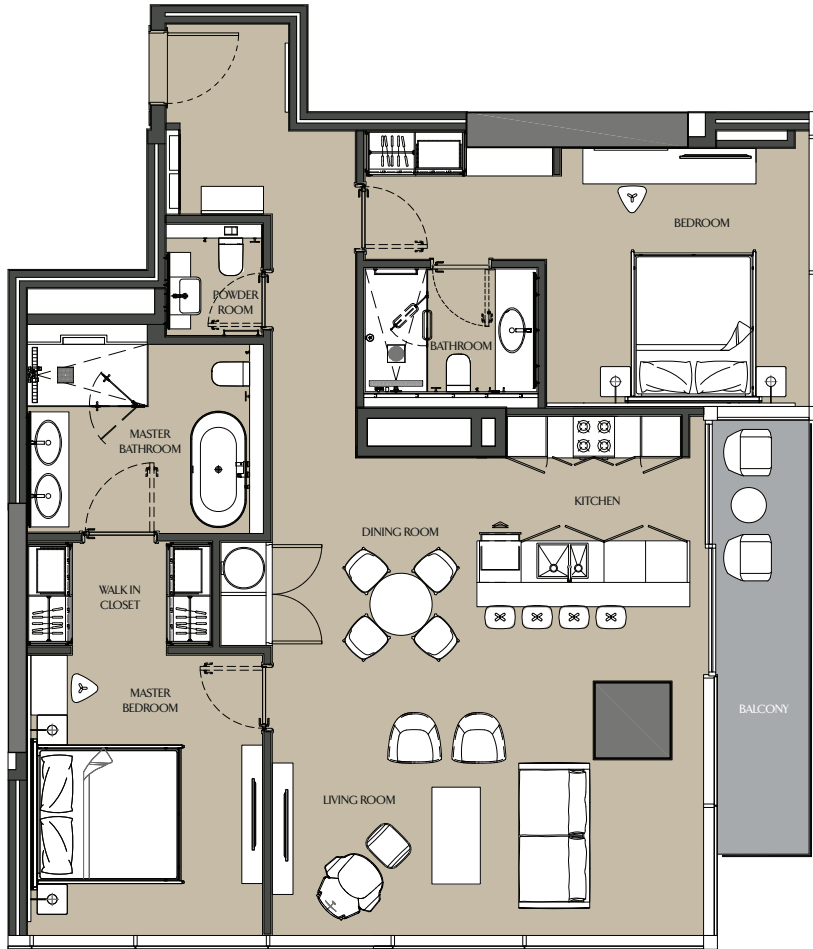
FLOOR TYPE 08
LEVEL 41, 42



FLOOR TYPE 09
LEVEL 43 - 55

TWO BEDROOM - 2C

LEVELS 21-40, 43-55



Apartment Area	12350 m ²	1,329.34 ft ²
Balcony Area	856 m ²	9214 ft ²
Total Area	13206 m ²	1,421.48 ft ²



FLOOR TYPE 05
LEVEL 21



FLOOR TYPE 06
LEVEL 22 - 29



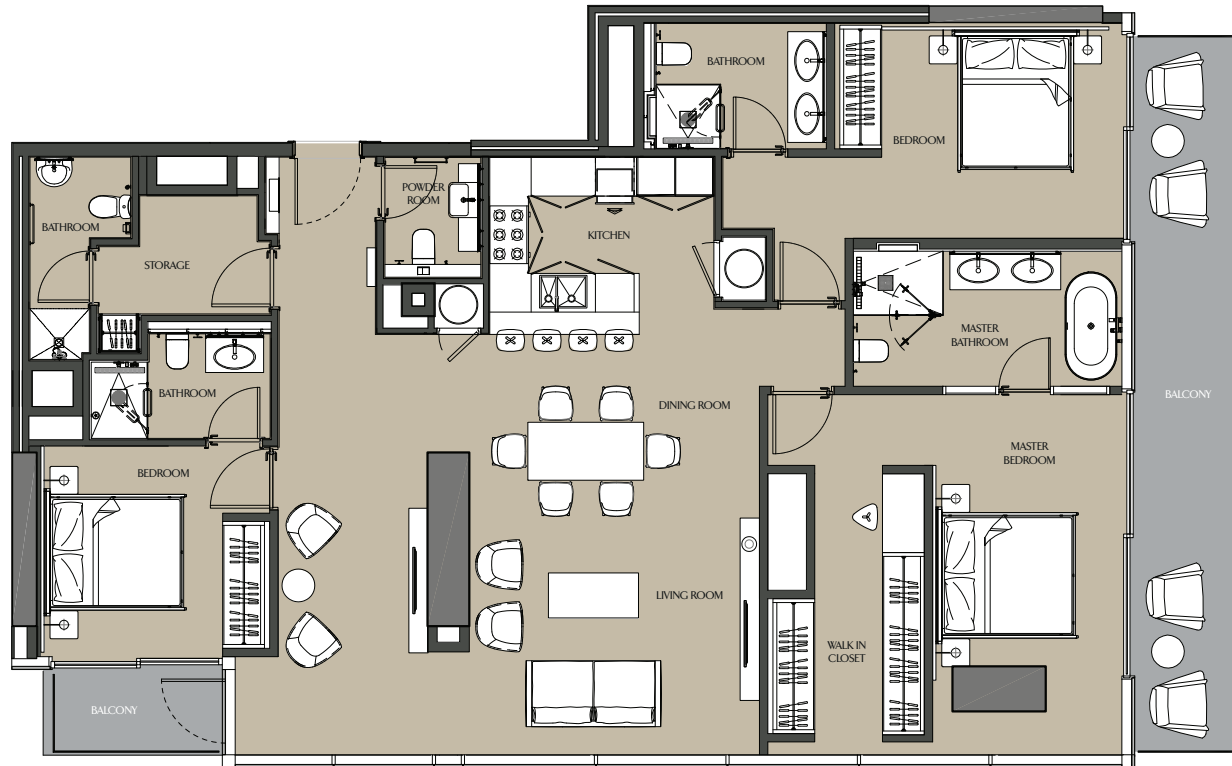
FLOOR TYPE 07
LEVEL 30 - 40



FLOOR TYPE 09
LEVEL 43 - 55

THREE BEDROOM - 3B

LEVELS 22-29, 43-55



FLOOR TYPE 06
LEVEL 22 - 29



FLOOR TYPE 09
LEVEL 43 - 55

Apartment Area	173.53 m ²	1,867.86 ft ²
Balcony Area	24.38 m ²	262.42 ft ²
Total Area	197.91 m ²	2,130.28 ft ²