

THE RESIDENCES AT MARINA GATE II



THE RESIDENCES AT MARINA GATE II

KEY DETAILS

HIGHLIGHTS
Stunning waterfront views
Children’s pool and play area
Unrivalled location in Dubai Marina
Spectacular gymnasium with steam & sauna facilities
Outdoor gymnasium with a multipurpose court
Nine high-speed elevators with a dedicated service elevator
Direct access loading dock for hassle-free moving in
Dedicated security with integrated CCTV coverage
24 hour concierge service
Secure resident parking
Ample visitor parking
Wide array of convenience retail on ground level
Direct access to Marina Walk

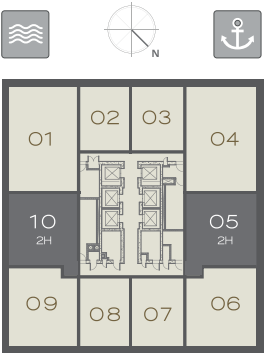
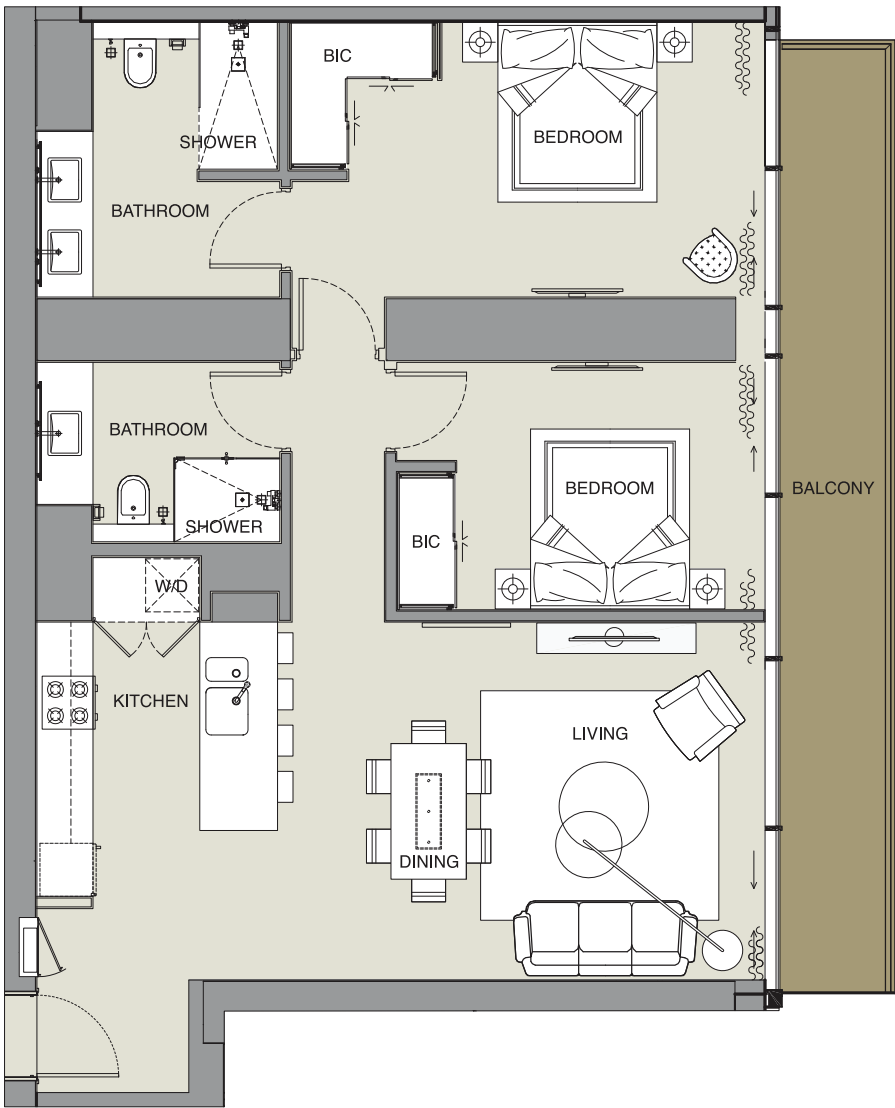


THE RESIDENCES AT MARINA GATE II

UNIT NUMBER	VIEWS	TYPE	UNIT AREA	INTERNAL AREA	EXTERNAL AREA	LIST PRICE (AED)
MG2-3805	JBR View	2H	1,206.64	1,047.87	158.77	2,350,000.00
MG2-3906	City View	2J	1,226.00	1,134.86	91.28	2,350,000.00
MG2-0501	Full Marina View	Villa 4BR	4,428.49	3,878.56	549.93	8,999,000.00

MARINA GATE II

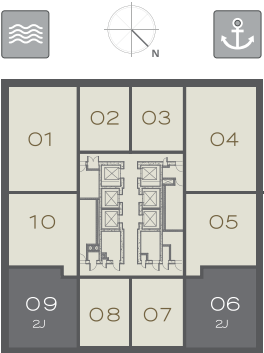
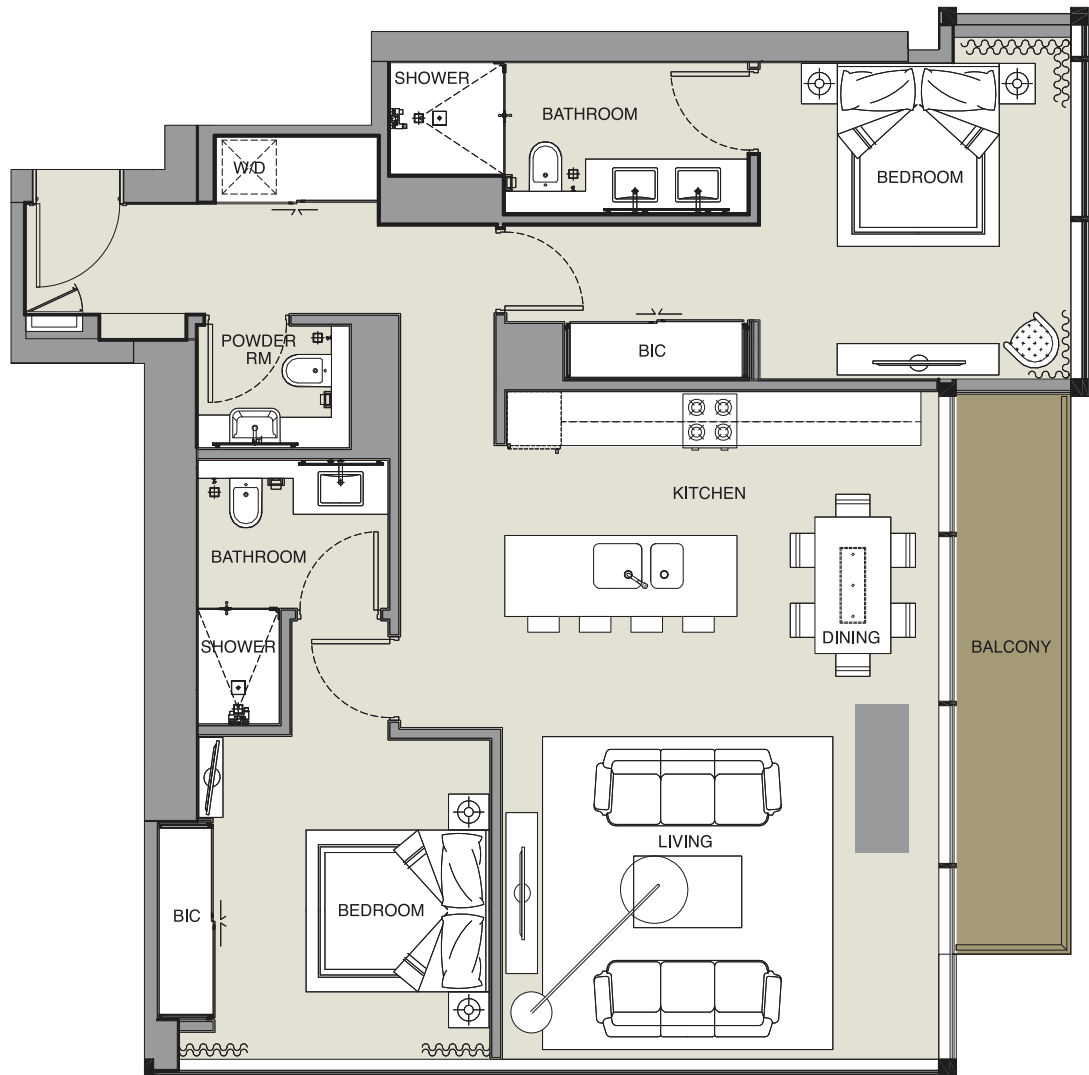
Two Bedroom (Type 2H) - Levels 35-44 & Levels 47-60



Apartment Area	97.35 Sq.m.	1,047.87 Sq.ft
Balcony Area	14.23 Sq.m.	153.17 Sq.ft
Total Area	111.58 Sq.m.	1,201.04 Sq.ft.

MARINA GATE II

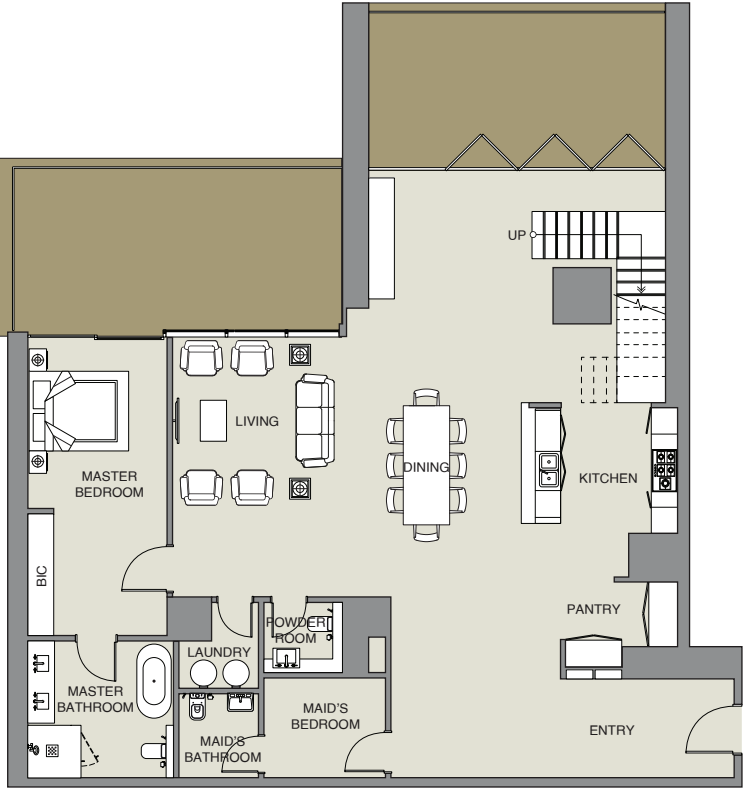
Two Bedroom (Type 2J) - Levels 35-44 & Levels 47-60



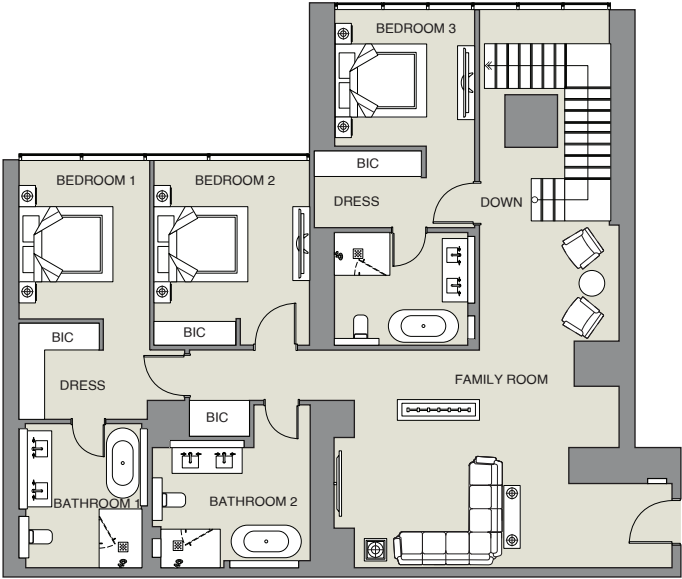
Apartment Area	133.35 Sq.m.	1160 Sq.ft
Balcony Area	21.27 Sq.m.	229 Sq.ft
Total Area	154.62 Sq.m.	1255 Sq.ft.

MARINA GATE II

Villa 5 Lower Level - Podium 5



Villa 5 Upper Level - Podium 6



Apartment Area	360.33 Sq.m.	3,878.56 Sq.ft
Balcony Area	51.09 Sq.m.	549.93 Sq.ft
Total Area	411.42 Sq.m.	4,428.49 Sq.ft.



LUXURY LIVING HOMES
INTERNATIONAL

CONTACT INFORMATION

PHONE: +4420 3561 6689

EMAIL: INFO@LUXURLIVINGHOMES.CO.UK