

## THE RESIDENCES AT MARINA GATE I





# THE RESIDENCES AT MARINA GATE I

## KEY DETAILS

HIGHLIGHTS
Stunning waterfront views
Children’s pool and play area
Unrivalled location in Dubai Marina
Spectacular gymnasium with steam & sauna facilities
Outdoor gymnasium with a multipurpose court
Nine high-speed elevators with a dedicated service elevator
Direct access loading dock for hassle-free moving in
Dedicated security with integrated CCTV coverage
24 hour concierge service
Secure resident parking
Ample visitor parking
Wide array of convenience retail on ground level
Direct access to Marina Walk



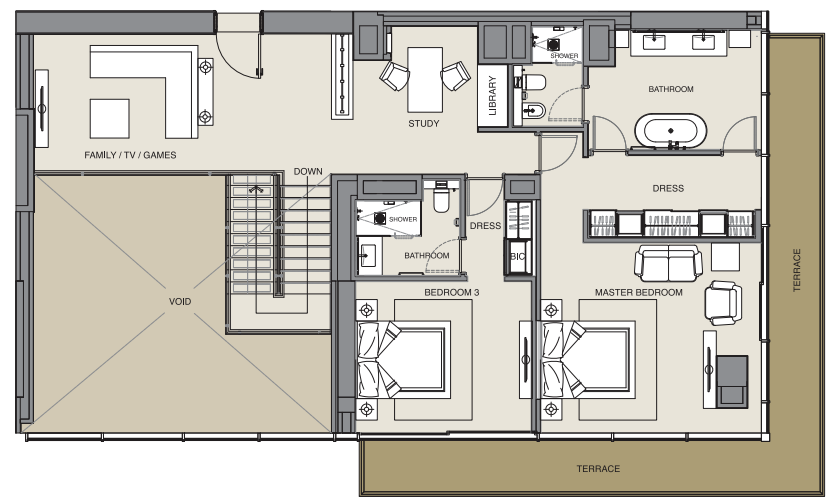
THE RESIDENCES AT MARINA GATE I

UNIT NUMBER	VIEWS	TYPE	UNIT AREA	INTERNAL AREA	EXTERNAL AREA	LIST PRICE (AED)
MG1-4804	City View	PH-4BR	3,958.53	3,210.87	747.66	5,900,000.00

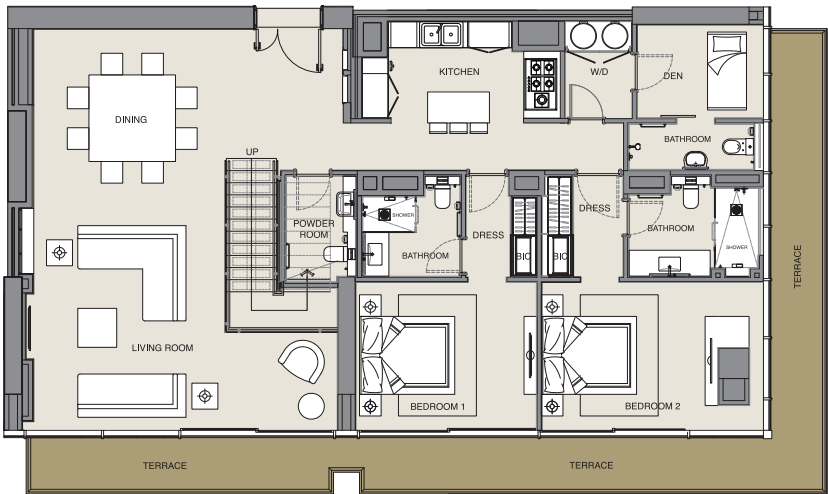
Unit currently rented to tenant until November 30th, 2021. The annual rent on this unit is currently AED 330,000

# MARINA GATE I

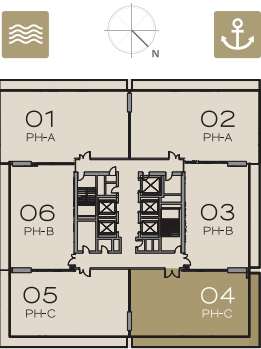
## Four Bedroom Penthouse (Type 4) - Levels 48,50



UPPER LEVEL



LOWER LEVEL



Apartment Area	298.30 Sq.m.	3,210.87 Sq.ft
Balcony Area	69.50 Sq.m.	747.66 Sq.ft
Total Area	367.76 Sq.m.	3,958.53 Sq.ft.