

*OFF MARKET*

EXCLUSIVE  
MAYFAIR  
MANSION

---

*GUIDE PRICE: £54,000,000*

# Summary

- Luxury Living Homes International are pleased to present this prestigious 12 bedroom (including 3 staff bedrooms), 18 bathrooms Mayfair mansion.
- This mansion is located on one of the most desirable streets in Mayfair and has a circa 26-meter frontage to the property.

## Other Key Features:

- 5 large living rooms
- 4 dressing rooms
- 2 kitchens + 2 kitchenettes,
- A library
- A gym
- Staff quarters
- Residents parking
- Internal Lift which goes to every floor
- Newly renovated to an immaculate standard
- Outside space including garden, balcony and roof terrace



# Location

This mansion is enviably located in the heart of Mayfair, just moments from the charming Mount Street and Park Lane. There is a wonderful range of amenities and local culture nearby, with the luxurious, world-renowned shopping streets of Bond Street, New Bond Street and Savile Row all located within proximity.

Berkeley Square is a short walk from the property and plays host to exclusive private members clubs such as Annabel's and famous restaurants. Hyde Park and Green Park offer tranquil green spaces nearby if one wishes to escape the hustle and bustle of the Mayfair District. The property is a short walk away from nearest underground stations Bond Street and Green Park.

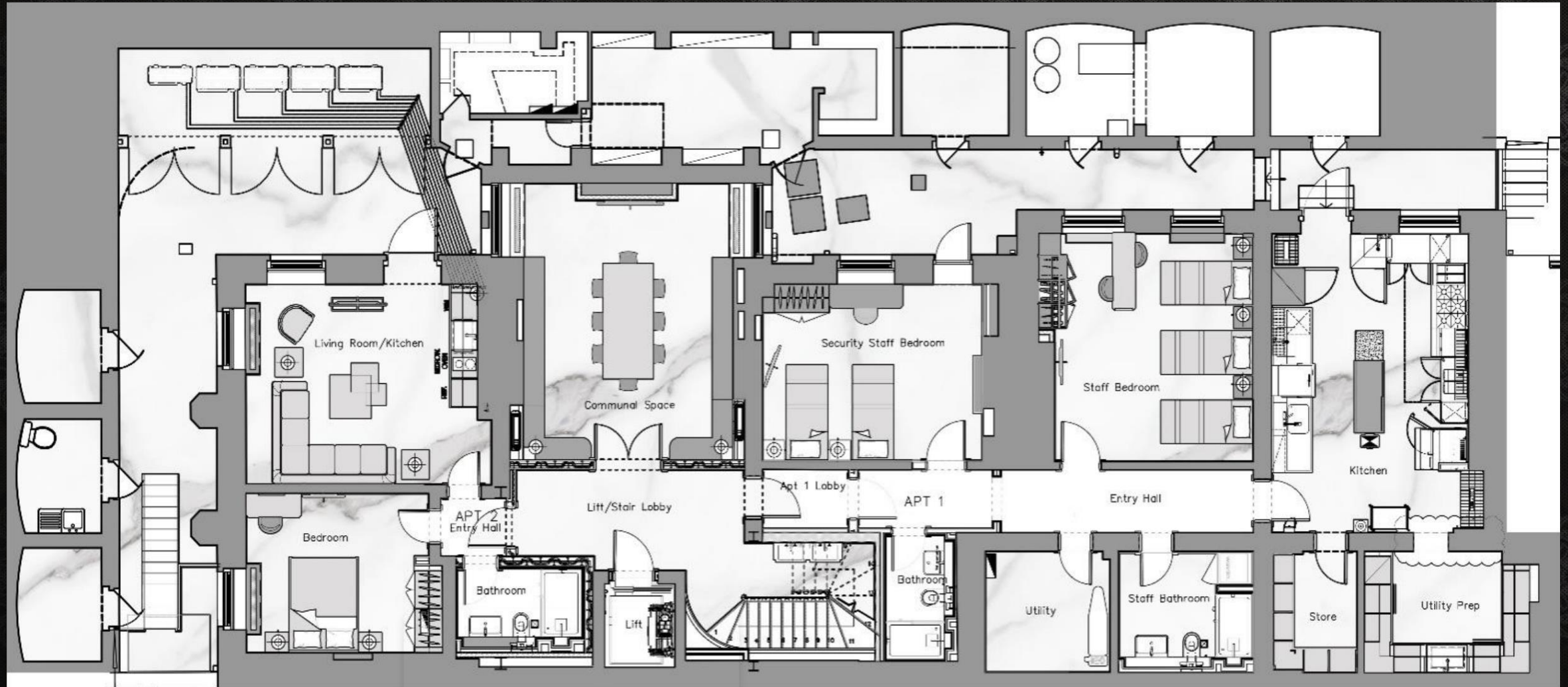


Latest Photos (Please note works are currently in progress and should be completed within the next month).

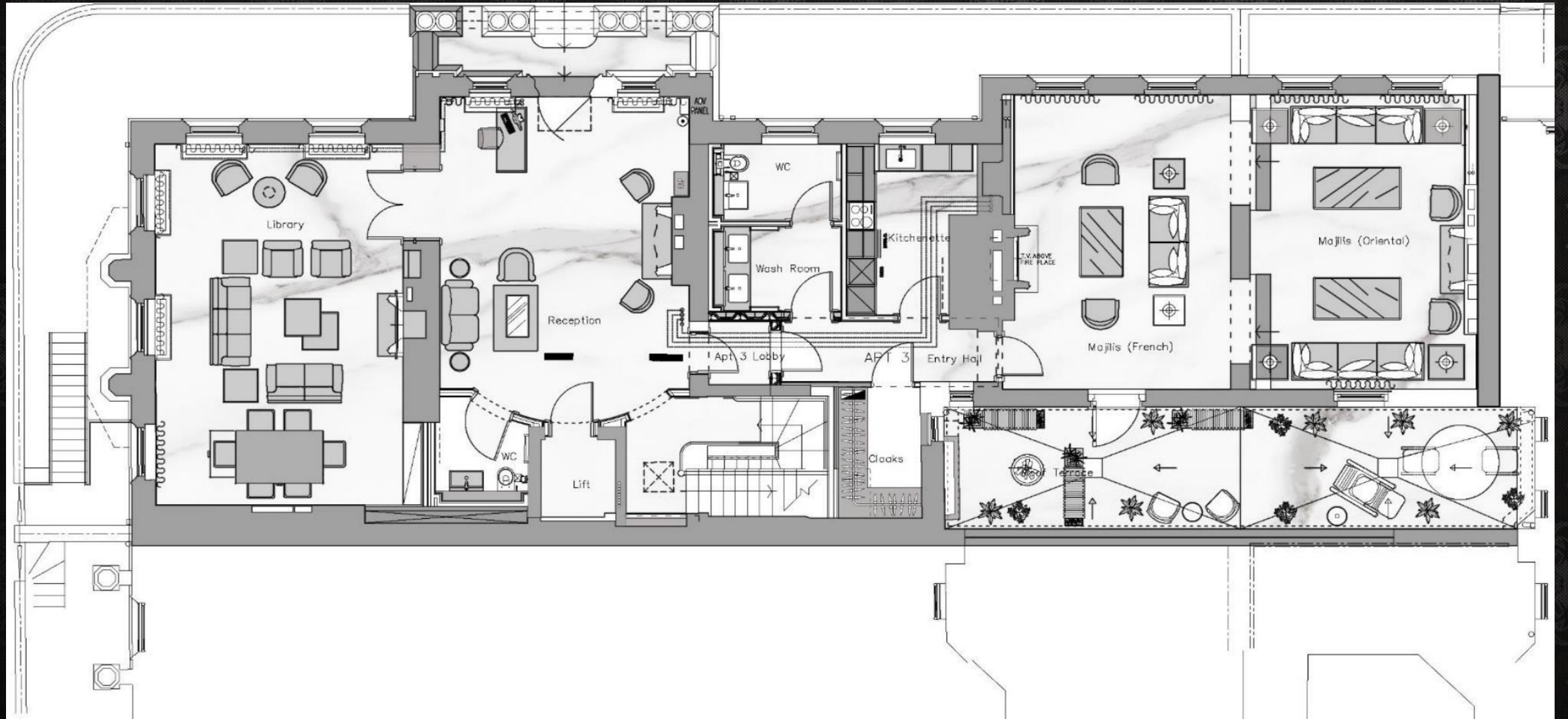


The approximate total size of the property is circa 14,500 sq ft / 1347 sqm.  
Please note Illustrations are for identifications only and measurements are approximate. Buyers are to do their own due diligence.

## LOWER GROUND FLOOR LAYOUT



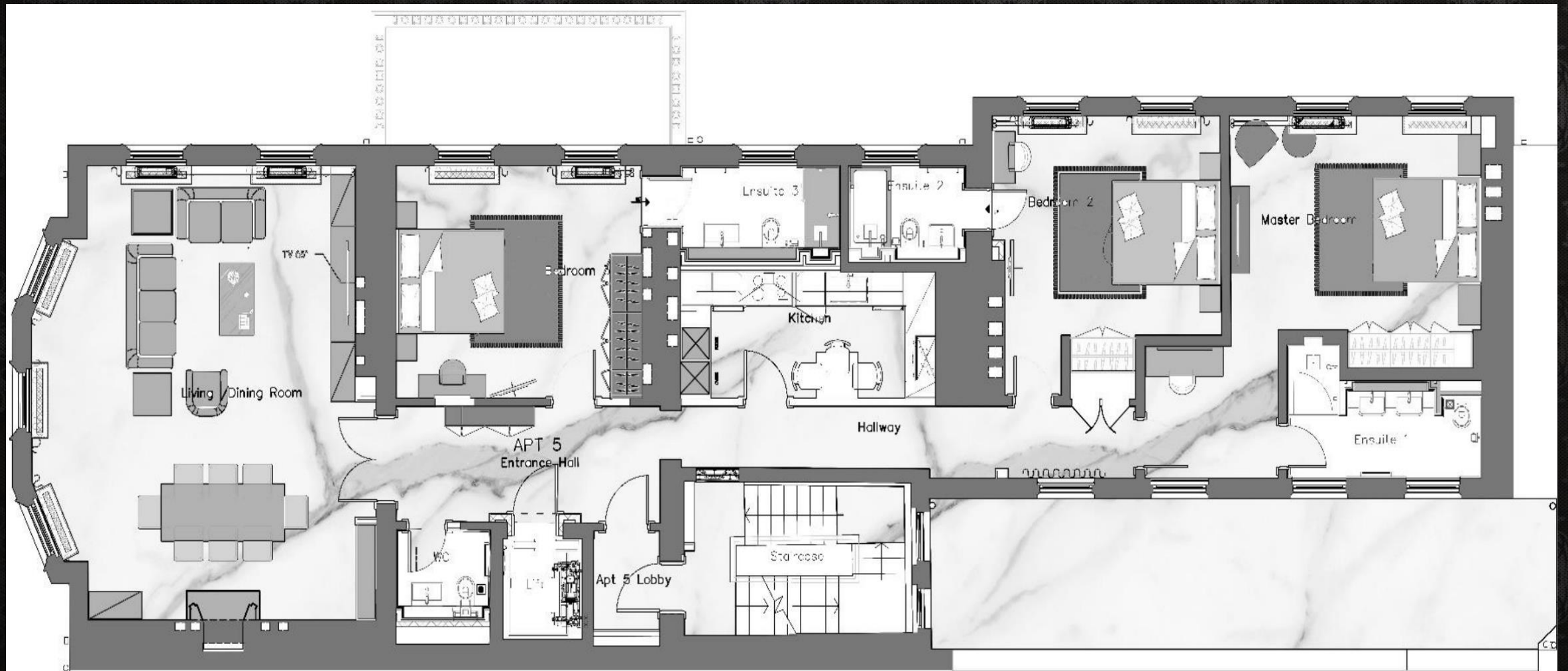
# GROUND FLOOR LAYOUT



# FIRST FLOOR LAYOUT

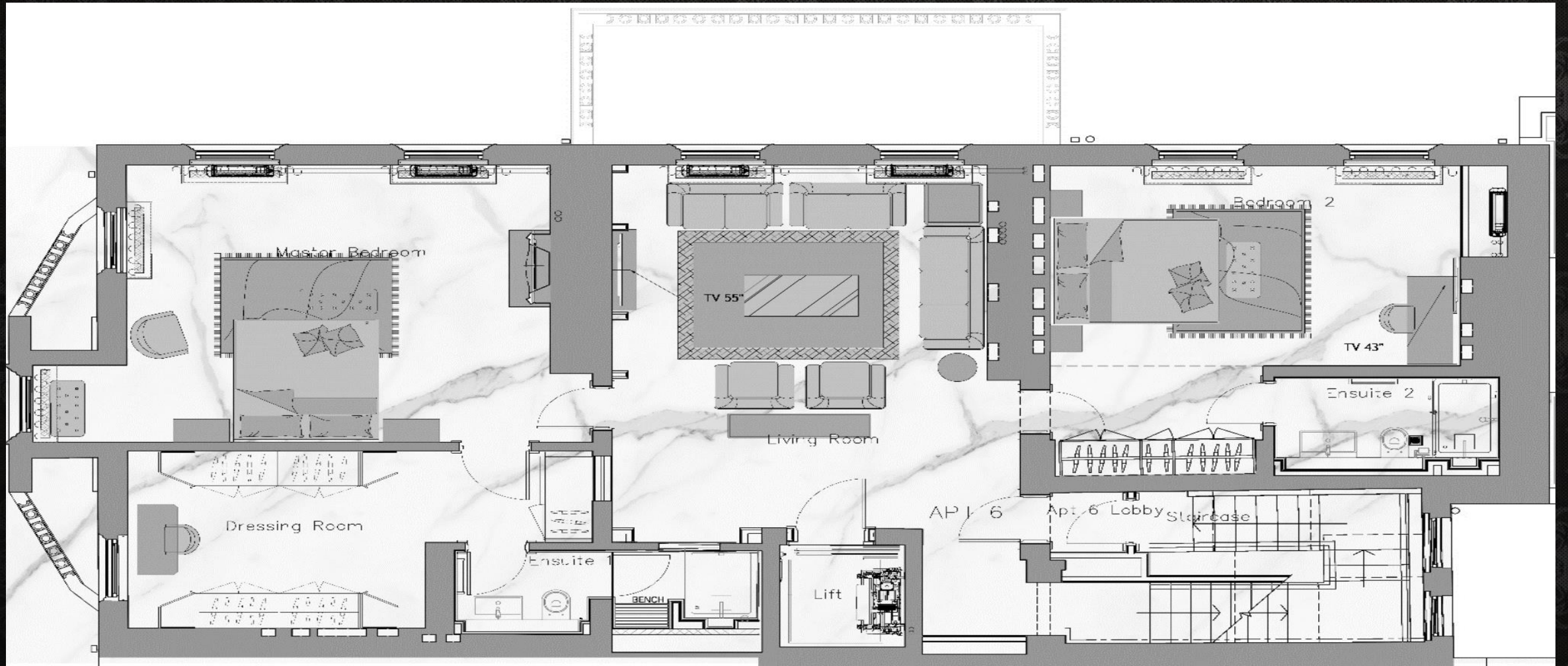


# SECOND FLOOR LAYOUT

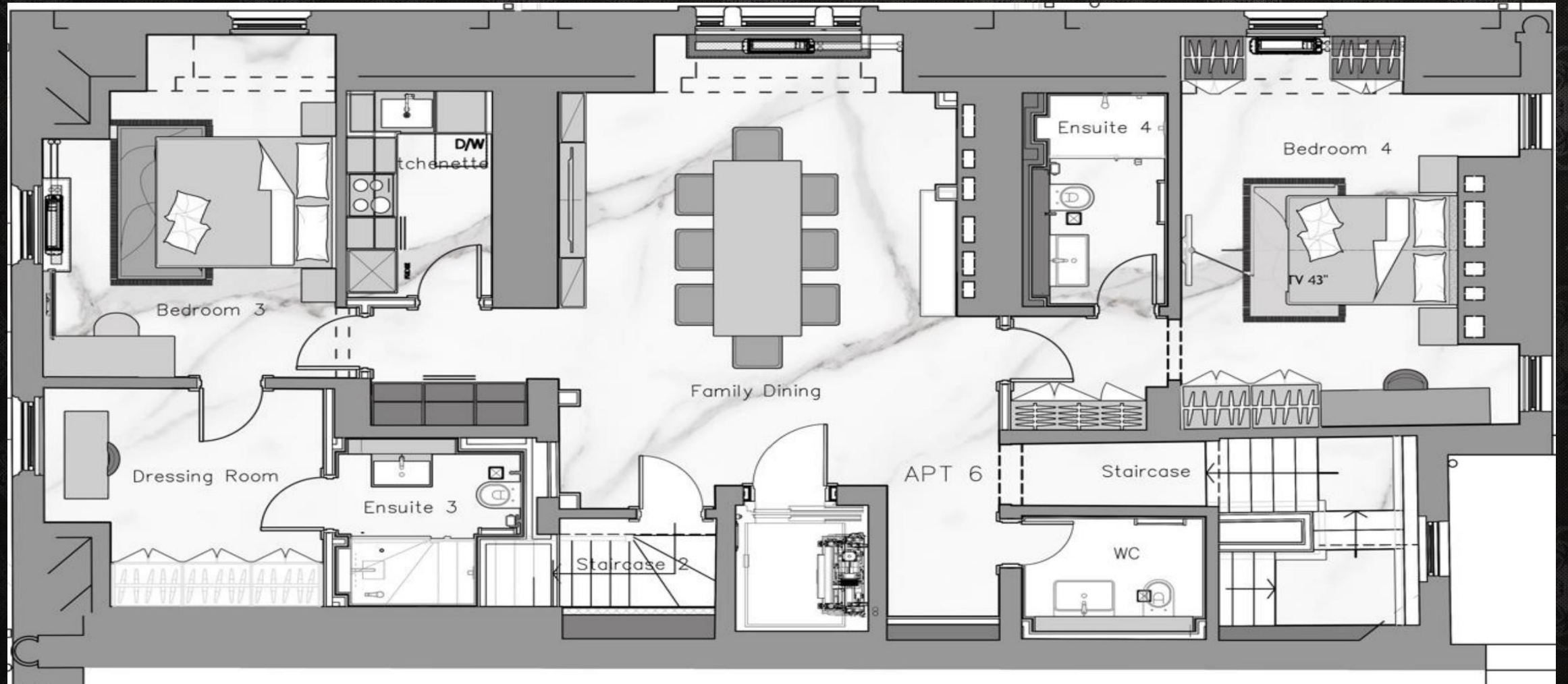




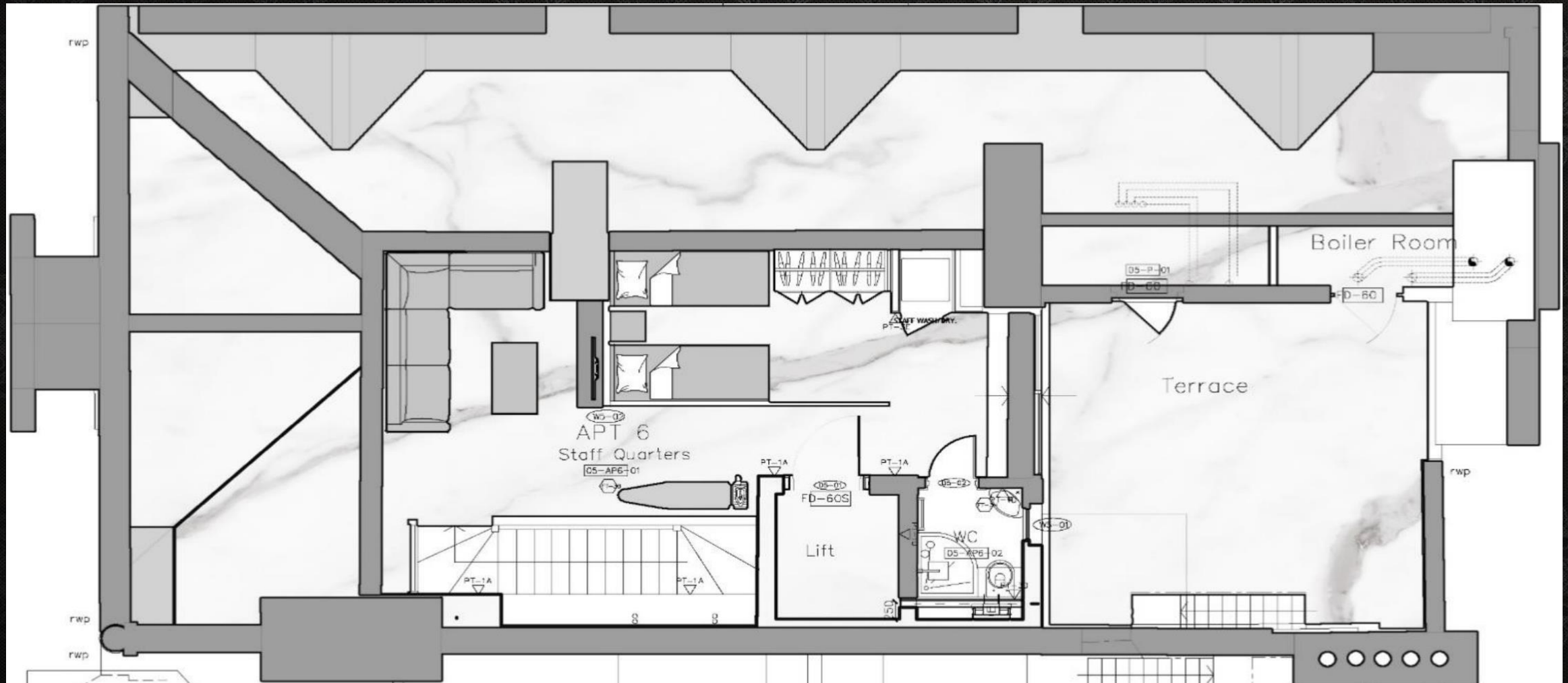
# THIRD FLOOR LAYOUT



# FOURTH FLOOR LAYOUT



# FIFTH FLOOR LAYOUT



*Contact information:*

*Luxury Living Homes International,  
71-75 Shelton Street, London,  
WC2H 9JQ*

*Rishi Chouhan*

*rishi@luxurylivinghomes.co.uk*

*+44203 561 6689*

*+44779 115 7039*



LUXURY LIVING HOMES  
INTERNATIONAL

---

Important Notice: 1. Particulars: These particulars are not an offer or contract, nor part of one. You should not rely on statements by Luxury Living Homes International Ltd in the particulars or by word of mouth or in writing ("information") as being factually accurate about the property, its condition or its value. Neither Luxury Living Homes International Ltd nor any joint agent has any authority to make any representations about the property, and accordingly any information given is entirely without responsibility on the part of the agents, seller(s) or lessor(s). 2. Photos, Videos etc: The photographs, property videos and virtual viewings etc. show only certain parts of the property as they appeared at the time they were taken. Areas, measurements and distances given are approximate only. 3. Regulations etc: Any reference to alterations to, or use of, any part of the property does not mean that any necessary planning, building regulations or other consent has been obtained. A buyer or lessee must find out by inspection or in other ways that these matters have been properly dealt with and that all information is correct

Private and Confidential