



LUXURY LIVING HOMES
INTERNATIONAL



SEAHAVEN SETS THE STANDARD

This is Sobha Realty's first project at Dubai Harbour. It is a unique waterfront neighbourhood near the city's most-loved landmarks.

Whether you are looking to relax by the pool, on your yacht, stroll along the harbourfront to explore the Marina, or simply enjoy the incredible views, Sobha SeaHaven is the perfect place to find your piece of paradise.



Spectacular sea views



Overlooking the glittering skyline



1 to 4 bedroom apartments



Specifications to the highest quality by Sobha



3 BEDROOM APARTMENT

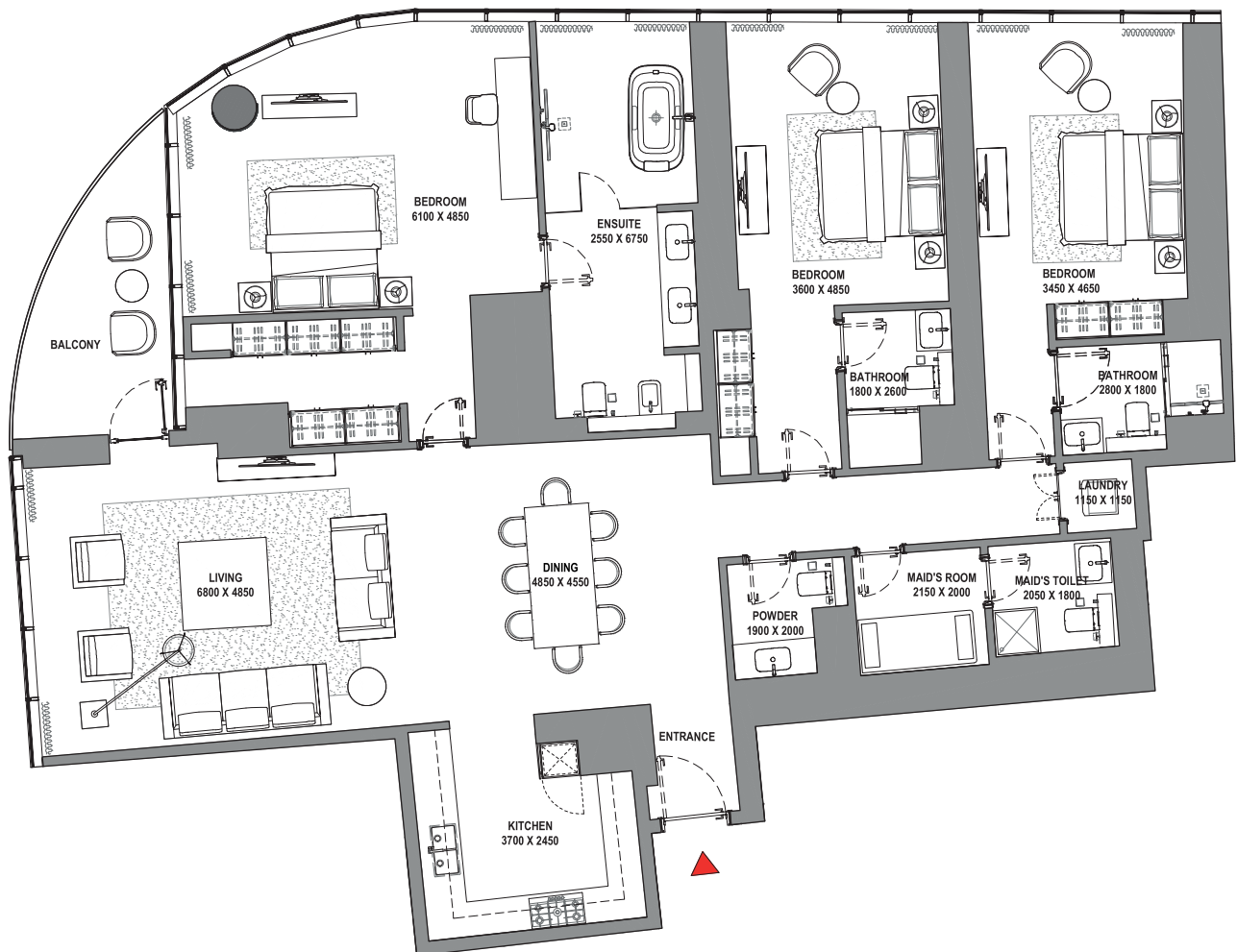
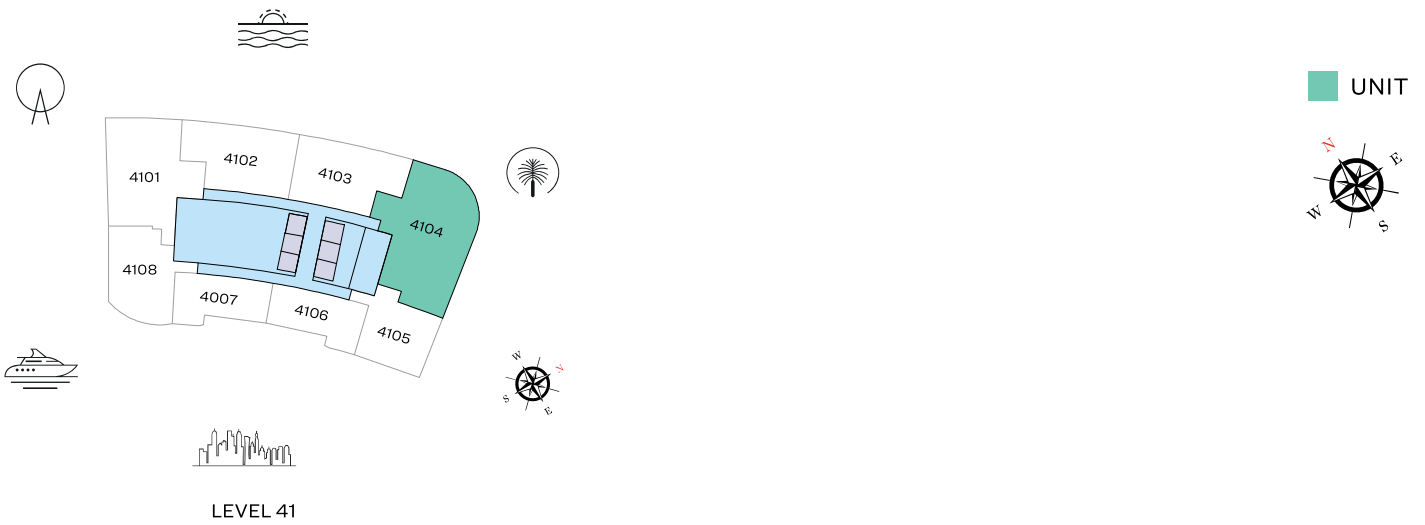
TYPE C (with maid room and powder room + balcony)

TOTAL SALEABLE AREA

SUITE = 2,466.44 SQ.FT.

BALCONY = 120.88 SQ.FT.

TOTAL = 2,587.32 SQ.FT.



List of unit numbers with this unit plan:

VIEWS

Palm Jumeirah, Harbour, Sea, Skydive
4104

Disclaimer: 1. All dimensions are in metric, measured to wall finishes. 2. All materials, dimensions & drawings are approximate. 3. Information is subject to change without notice, at developer's absolute discretion. 4. Actual area may vary from the stated area. 5. Drawing are not to scale. 6. All images used are for illustrative purpose only and do not represent the actual size, features, specifications, fittings and furnishings. 7. The developer reserves the right to make revisions/ alterations, at its absolute discretion, without any liability whatsoever.



SOBHA SEAHAVEN

QUOTATION

Sobha SeaHaven (SSH - Tower A)

SH-191136

Floor Number	41
Type	3 Bed Type C
Unit Number	SSH-A4104
Saleable Area (Sq.ft)	2,587
Purchase Price (AED)	11,513,574
Pre- Registration Fees (AED)	461,693

Installment Plan

Installment	% of Purchase Price	Amount (AED)	Payment Dates	Milestone
Booking Amount	20.00%	2,302,714.80	On Booking	On Booking date
First Installment	10.00%	1,151,357.40	-	9 Months from booking date
Second Installment	10.00%	1,151,357.40	-	15 Months from booking date
Third Installment	10.00%	1,151,357.40	-	21 Months from booking date
Fourth Installment	10.00%	1,151,357.40	-	27 Months from booking date
Fifth Installment	10.00%	1,151,357.40	-	33 Months from booking date
Sixth Installment	10.00%	1,151,357.40	-	39 Months from booking date
Final Installment	20.00%	2,302,714.80	-	On Completion

Pre-Registration Fees

Description	Amount (AED)
4% Pre-Registration Charges	460,543.00
Knowledge Fee	40.00
Oqood Fees	1,110.00

Developer Details

Developer / ID	Sobha LLC / g66
Project Name / ID	Sobha SeaHaven (Freehold)



**LUXURY LIVING HOMES
INTERNATIONAL**

71-75 Shelton Street, London, WC2H 9JQ
info@luxurylivinghomes.co.uk
+44203 3561 6689
www.luxurylivinghomes.co.uk