

FLOOR PLANS



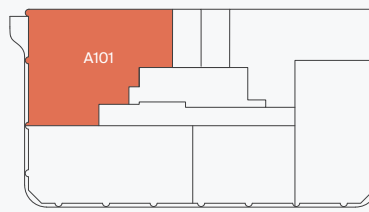
# W1 PLACE

LONDON

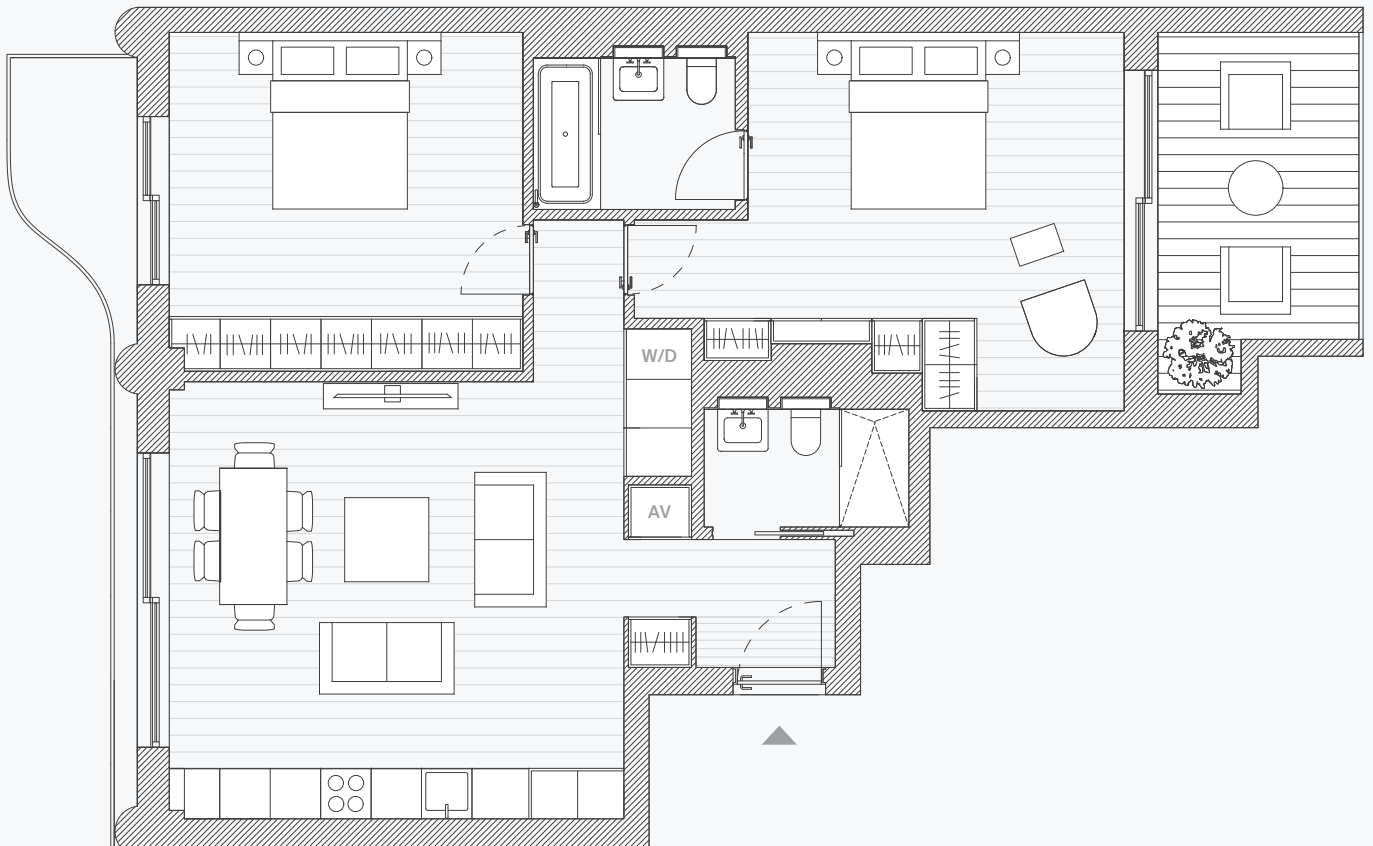
# Apartment A101 2 bedroom



First floor



Living/Kitchen/Dining	5.4m x 5.2m
Master Bedroom	5.8m x 4.5m
Master Bathroom	2.4m x 1.8m
Bedroom 2	4.2m x 4.0m
Guest Bathroom	2.4m x 1.4m
<b>Total</b>	89m <sup>2</sup>
	958sqft
<b>Terrace</b>	9.4m <sup>2</sup>
	101sqft

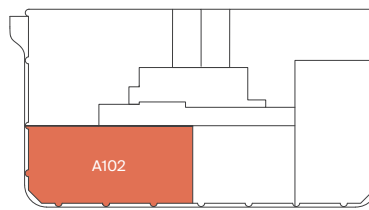


# Apartment A102

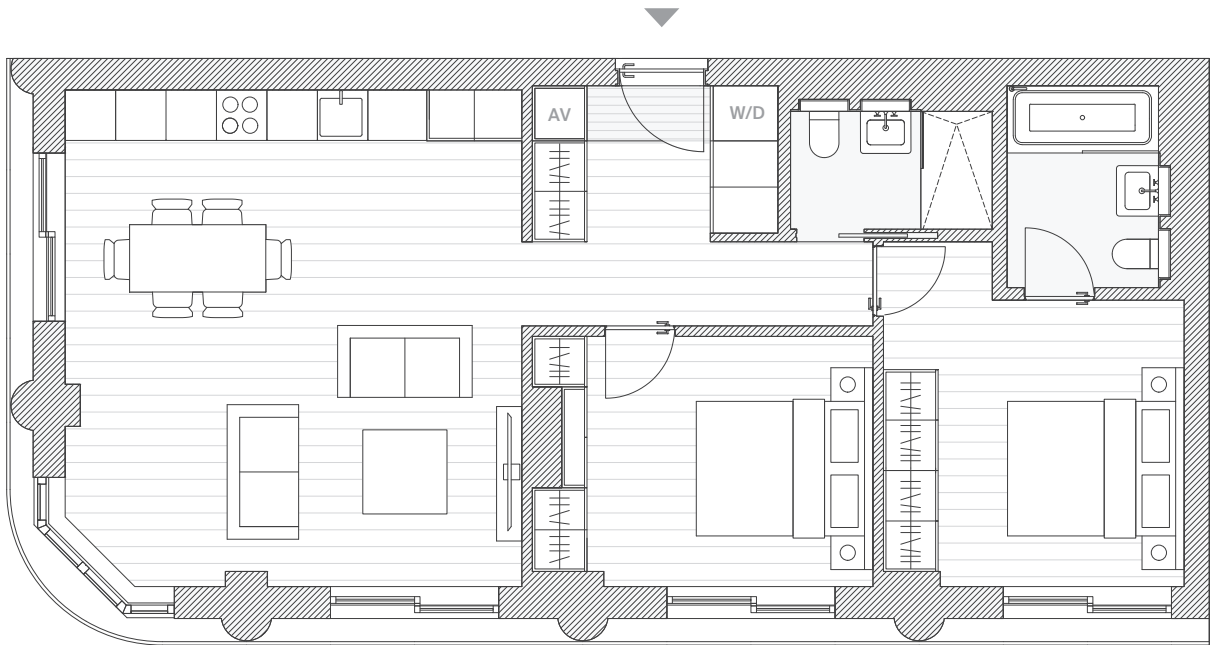
## 2 bedroom



First floor



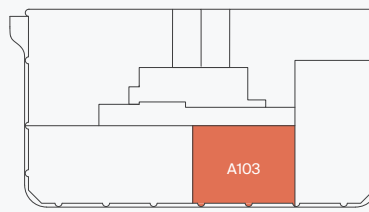
Living/Kitchen/Dining	5.9m x 5.4m
Master Bedroom	4.1m x 3.6m
Master Bathroom	2.4m x 1.8m
Bedroom 2	4.1m x 3.0m
Guest Bathroom	2.4m x 1.4m
<b>Total</b>	<b>80.6m<sup>2</sup></b>
	868sqft



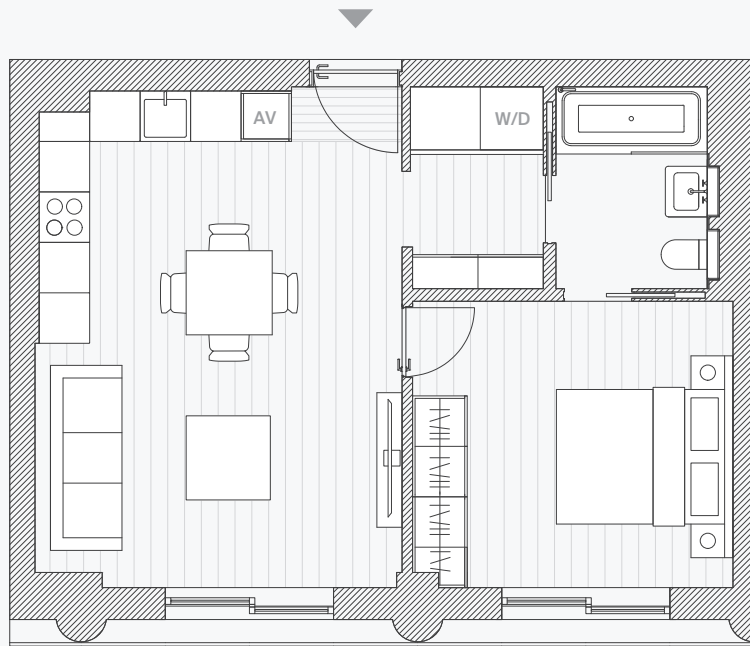
# Apartment A103 1 bedroom



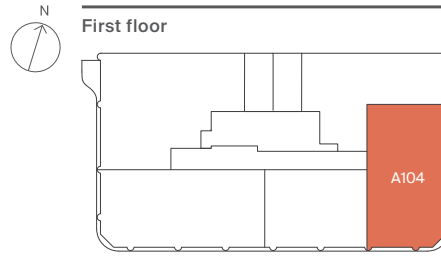
First floor



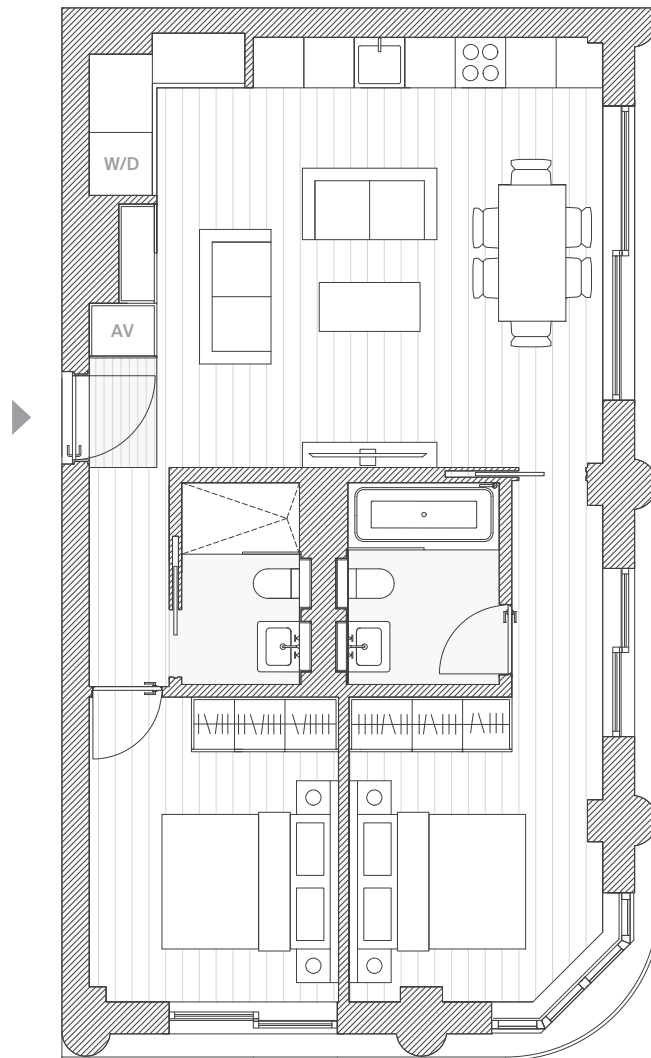
Living/Kitchen/Dining	5.9m x 4.4m
Master Bedroom	3.8m x 3.4m
Guest/Master Bathroom	2.4m x 1.8m
<b>Total</b>	<b>50m<sup>2</sup></b>
	532sqft



# Apartment A104 2 bedroom



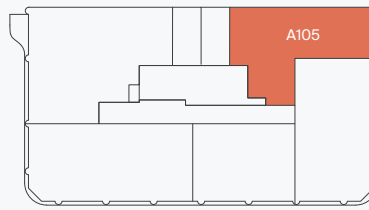
Living/Kitchen/Dining	6.1m x 5.1m
Master Bedroom	6.2m x 3.0m
Master Bathroom	2.4m x 1.8m
Bedroom 2	4.0m x 3.0m
Guest Bathroom	2.4m x 1.4m
<b>Total</b>	<b>71.6m<sup>2</sup></b>
	771sqft



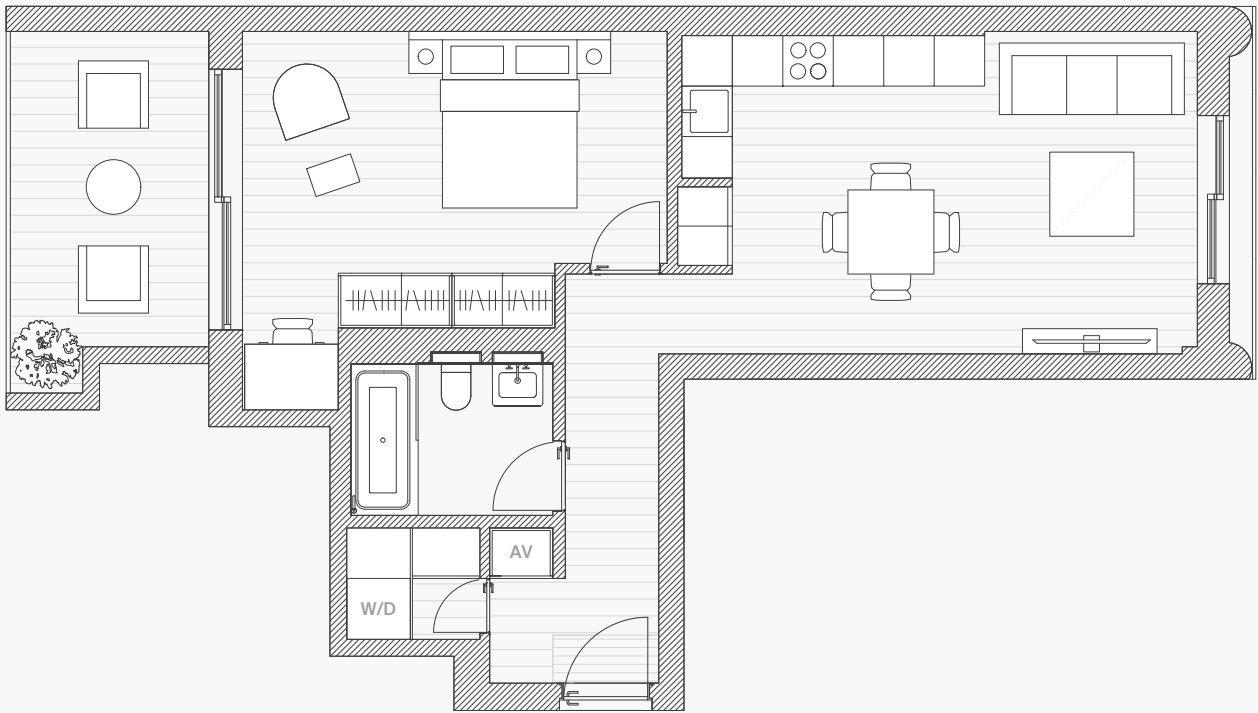
# Apartment A105 1 bedroom



First floor



Living/Kitchen/Dining	6.8m x 3.1m
Master Bedroom	5.1m x 3.5m
Master Bathroom	2.4m x 1.8m
Guest Bathroom	2.4m x 1.4m
<b>Total</b>	<b>59.1m<sup>2</sup></b>
	<b>636sqft</b>
<b>Terrace</b>	<b>9.3m<sup>2</sup></b>
	<b>100sqft</b>



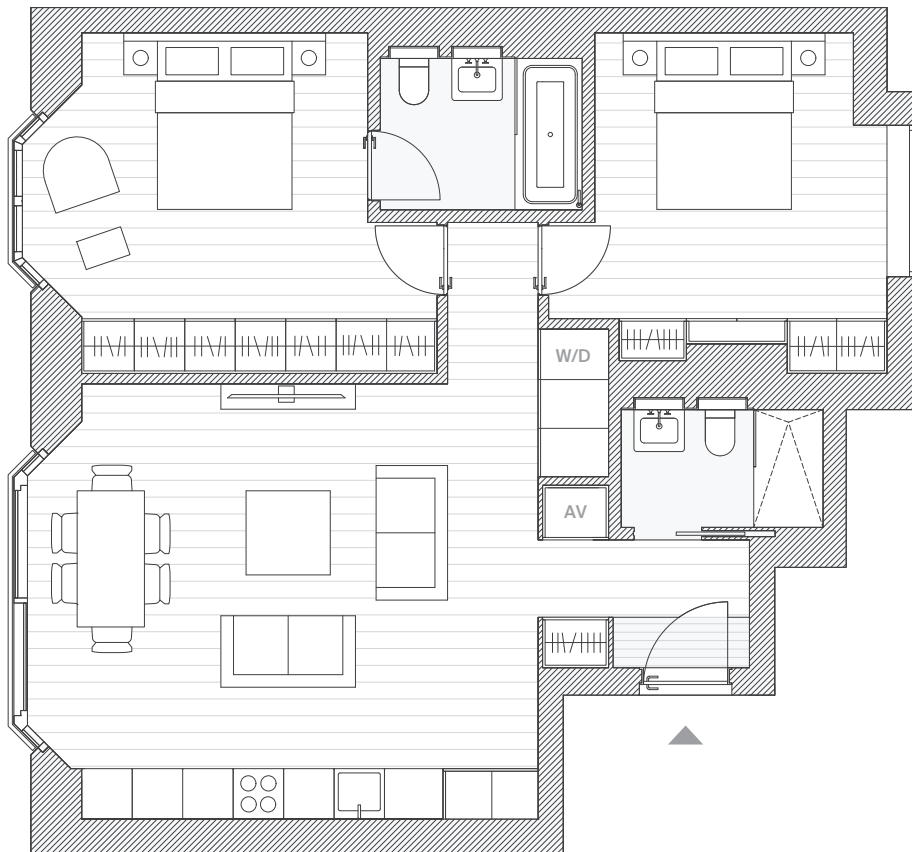
# Apartment A201-A701 2 bedroom



Typical floor



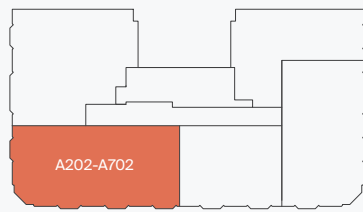
Living/Kitchen/Dining	6.1m x 5.1m
Master Bedroom	4.9m x 4.1m
Master Bathroom	2.4m x 1.8m
Bedroom 2	4.1m x 4.0m
Guest Bathroom	2.4m x 1.4m
<b>Total</b>	<b>83.1m<sup>2</sup></b>
	894sqft



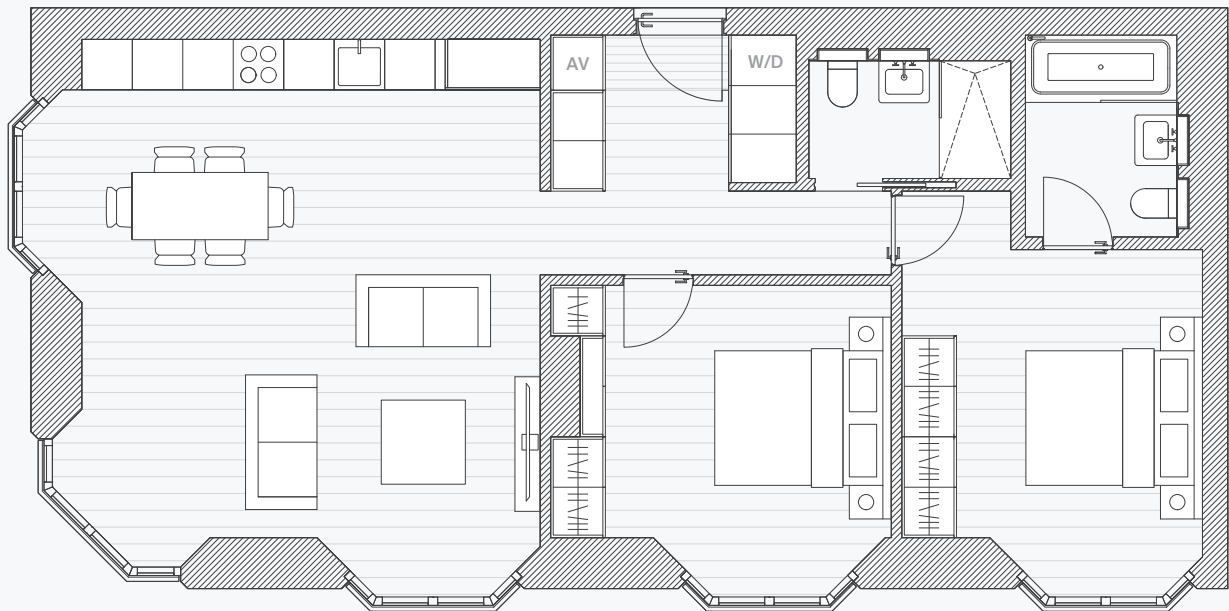
# Apartment A202-A702 2 bedroom



Typical floor



Living/Kitchen/Dining	6.6m x 6.2m
Master Bedroom	4.8m x 3.6m
Master Bathroom	2.4m x 1.8m
Bedroom 2	4.1m x 3.7m
Guest Bathroom	2.4m x 1.4m
<b>Total</b>	<b>86m<sup>2</sup></b>
	926sqft

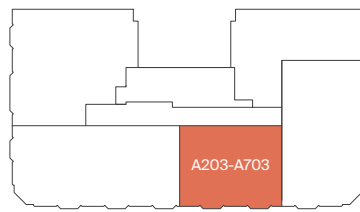




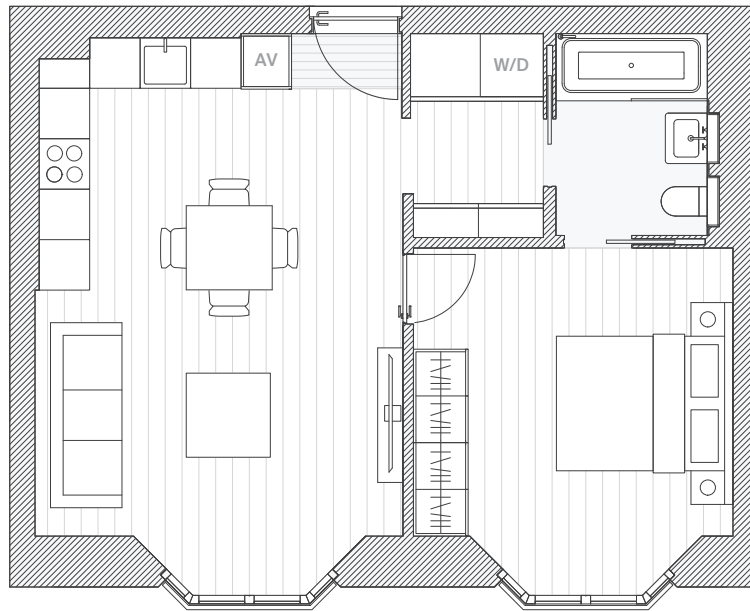
# Apartment A203-A703 1 bedroom



Typical floor



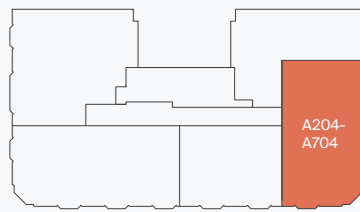
Living/Kitchen/Dining	6.6m x 4.4m
Master Bedroom	4.1m x 3.8m
Guest/Master Bathroom	2.4m x 1.8m
<b>Total</b>	<b>52.5m<sup>2</sup></b>
	565sqft



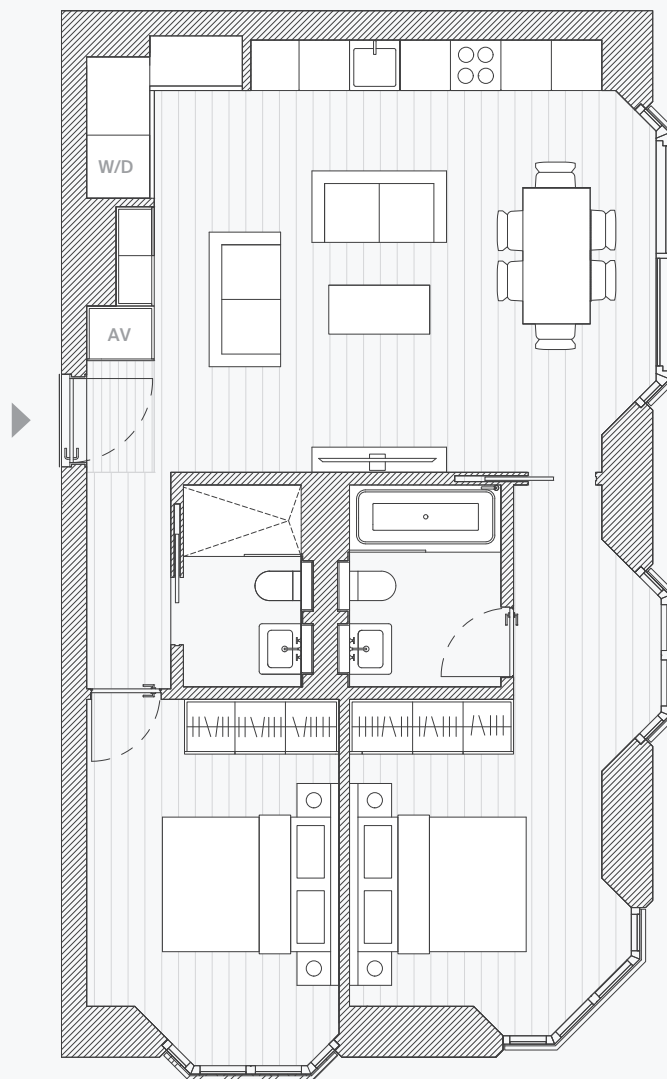
# Apartment A204-A704 2 bedroom



Typical floor



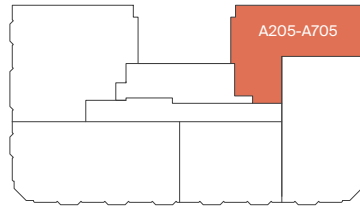
Living/Kitchen/Dining	6.8m x 5.2m
Master Bedroom	6.5m x 3.7m
Master Bathroom	2.4m x 1.8m
Bedroom 2	4.4m x 3.0m
Guest Bathroom	2.4m x 1.4m
<b>Total</b>	<b>76.7m<sup>2</sup></b>
	826sqft



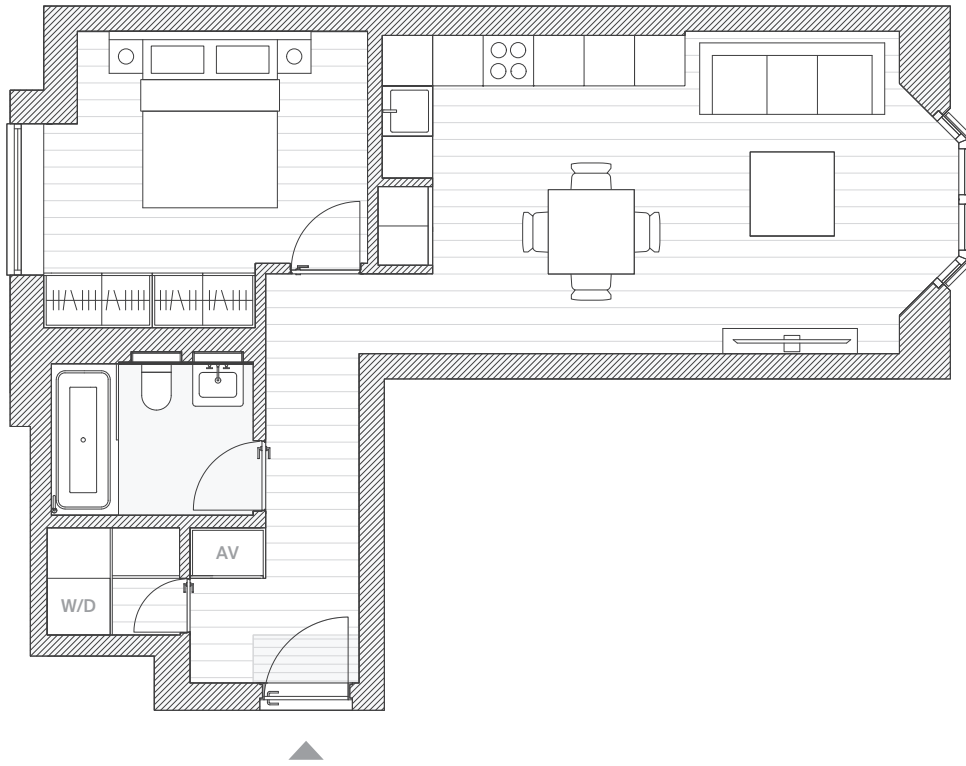
# Apartment A205-A705 1 bedroom



Typical floor



Living/Kitchen/Dining	6.9m x 3.8m
Master Bedroom	3.9m x 3.5m
Master Bathroom	2.4m x 1.8m
Guest Bathroom	2.4m x 1.4m
<b>Total</b>	<b>54.2m<sup>2</sup></b>
	583sqft



# Penthouse

# Apartment A801 3 bedroom



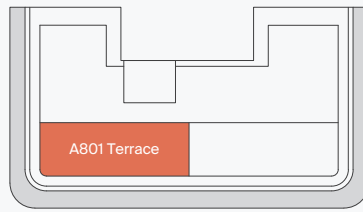
Living/Kitchen/Dining	7.8m x 6.3m
Master Bedroom	4.7m x 3.6m
Master Bathroom	3.5m x 1.8m
Master Wardrobe	3.5m x 2.4m
Bedroom 2	3.6m x 3.2m
Bedroom 3	3.9m x 3.5m
En-suite	2.4m x 1.4m
Guest Bathroom	2.4m x 1.4m
<b>Total</b>	142.5m <sup>2</sup>
	1534sqft
<b>Terrace</b>	26.6m <sup>2</sup>
	286sqft



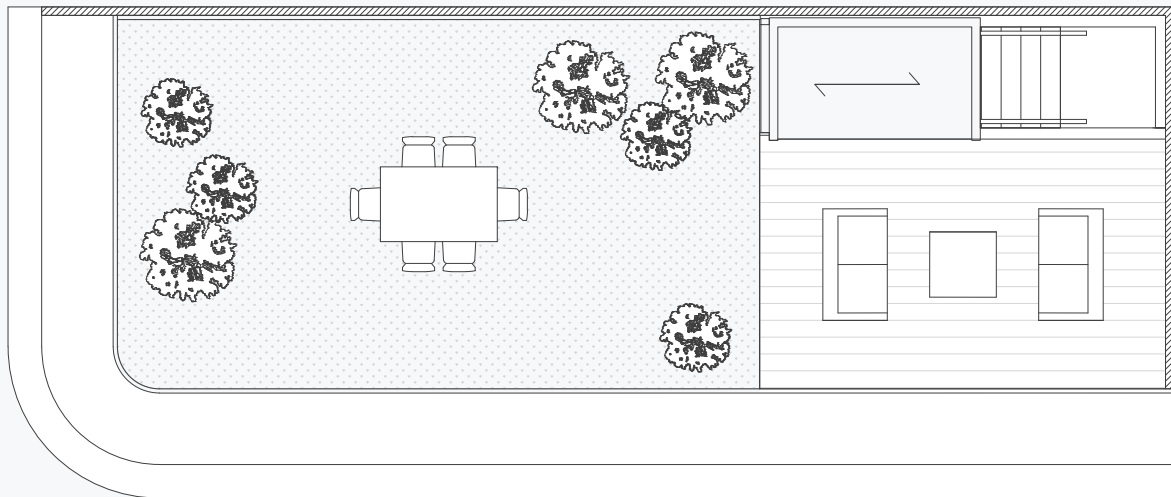
# Apartment A801 Roof Terrace



Roof plan



Roof Terrace	12.5m x 4.4m
<b>Total</b>	<b>55.3m<sup>2</sup></b>
	596sqft

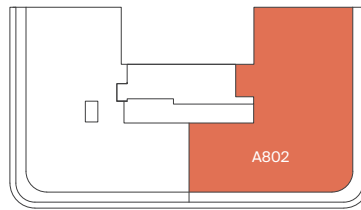


# Apartment A802

## 3 bedroom



Eighth floor



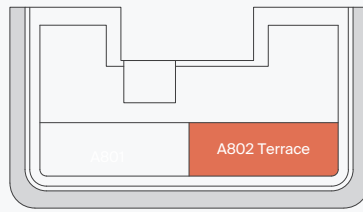
Living/Kitchen/Dining	7.8m x 6.3m
Master Bedroom	4.7m x 3.9m
Master Bathroom	3.5m x 1.8m
Master Wardrobe	3.6m x 2.4m
Bedroom 2	3.6m x 3.2m
Bedroom 3	3.9m x 3.5m
En-suite	2.4m x 1.4m
Guest Bathroom	2.4m x 1.4m
<b>Total</b>	148.6m <sup>2</sup>
	1600sqft
<b>Terrace</b>	26.6m <sup>2</sup>
	286sqft



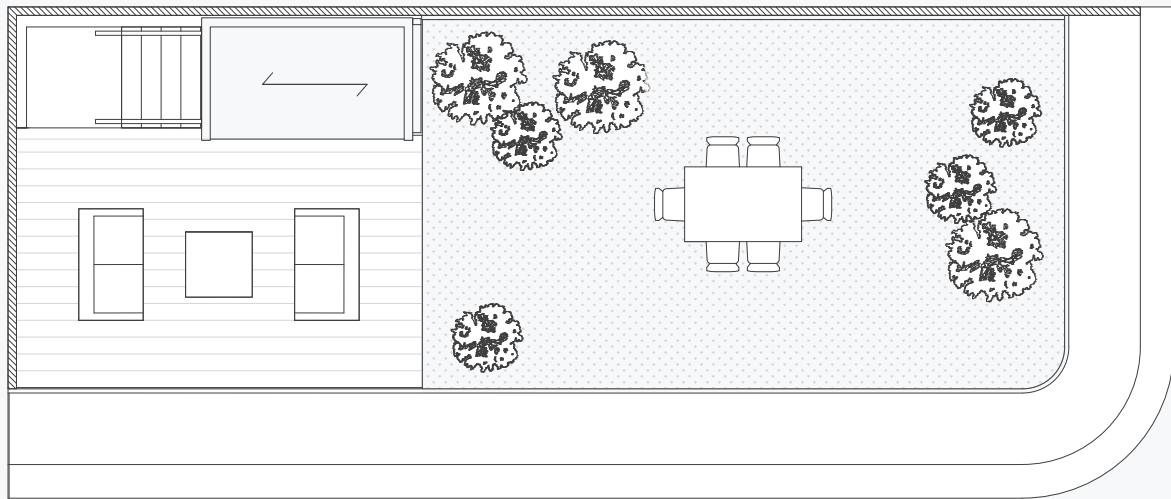
# Apartment A802 Roof Terrace



Roof plan



Roof Terrace	12.5m x 4.4m
<b>Total</b>	<b>55.3m<sup>2</sup></b>
	596sqft





# Specification Summary

---

## Apartments

### Entrance

- Solid core veneered timber entrance door
- Video entry control system
- Cloak wardrobes by the entrance

### Utility closet

- Integrated washing machine and dryer

### Living areas

- Engineered oak timber flooring
- Full height windows
- Full height timber doors
- Fan coil unit comfort cooling and ventilation
- Under floor heating
- Wall washers down lights and provision for fixture above the dining area
- 5 amp lighting sockets to living rooms and master bedrooms
- Stainless steel ironmongery

### Kitchen

- Engineered oak timber flooring
- Luxury contemporary kitchen featuring stone work tops
- Under mounted stainless steel double sink
- Integrated oven, induction hob, microwave and dishwasher
- Integrated fridge/freezer and glass-fronted wine fridge
- Segregated waste storage

### All bedrooms

- Engineered oak timber flooring
- Full height floor to ceiling wardrobes with integrated shelving and hanging rails
- Under floor heating
- Fan coil unit comfort cooling and ventilation

### Juliette balconies

- Brass coloured signature cast aluminium balustrades
- Triple glazed full height windows

### Terraces

- Ceramic decking floor
- External lighting

### Bathrooms

- Under mounted white bath with shower and shower screen or walk in shower with overhead and hand shower heads; full height porcelain surrounds
- Wall mounted basin
- Dual flush WC with concealed cistern
- Porcelain floor tiling
- Stainless steel mixers, taps and showers
- Mirror fronted wall cabinets with wall lights; interiors fitted with shelving
- Heated stainless steel towel rails
- Under floor heating
- Cove lighting to the showers and bath walls
- Extractor system
- Double wall mounted basin and larger wall cabinet on penthouse master bathrooms

### Systems

- Stand-alone system of interlinked smoke alarms, mains operated with battery back-up
- AV cabling infrastructure for IT and TV distribution
- High speed fibre optic connection infrastructure directly into each apartment for data/telephone
- Home automation system with controllable touch panels/push buttons where applicable
- Lighting control system where applicable
- Wiring for Sky Q in equipment cupboard with outlets in each room
- Wiring for control point with KNX panel

### DEVELOPER

204 GP Street (Jersey) Ltd  
c/o Volaw Group  
37 Esplanade  
St. Helier  
Jersey JE1 2TR  
w1.place

### DEVELOPMENT MANAGER

Concord London Ltd.  
50 Bolsover St, Marylebone  
London W1W 5NG  
concord-london.com

### ARCHITECT

E8 Architecture  
E8 Design Ltd,  
1 Mentmore Terrace,  
London E8 3PN  
e8architecture.co.uk

### BOOK DESIGN

Winkreative

---

## Common Areas

### Reception

- Entrance canopy
- Concierge
- Granite floor
- Feature glass wall panelling

### Lifts

- Two passenger lifts
- Stone floor matching entrance lobby and brushed stainless steel doors

### Core and corridors

- Engineered oak timber flooring to residential corridor floors

The information in this document is intended to act as a guide only as to the finished product. This document does not constitute a contract or warranty nor does it provide any guarantee on the accuracy or completeness. All matters will be governed by the applicable purchase and sales agreement. All illustrations and computer generated images reflect the artists' interpretation of the project and do not take into account the neighbouring buildings, physical structures, streets and landscape. The developer reserves the right to make modifications and changes to the project including but not limited to architectural and interior features and finishes, brands, colours, materials, building design, specifications, ceiling heights, flooring patterns and floor plans without notification. Actual apartment plans and dimensions may have minor variations to, or shown as mirror image of the typical plans presented in this document and are not intended to be used for carpet sizes or items of furniture. Area measurements in this document are given as Gross Internal Area (GIA).

