



**FREE
AIRFARE
INCLUDED**

*when booked by
July 1, 2025*

Portugal and the Douro River Cruise

Travel Dates: May 27 – June 6, 2026

CRESCENT
SKI COUNCIL
Since 1969

Portugal and the Douro River Cruise



Experience the cosmopolitan charm of Lisbon, Portugal



Feel the rhythm of the city in the Plaza Mayor, Salamanca, Spain

DAY 1 Depart the USA: Depart the USA on your overnight flight to Lisbon, Portugal.

DAY 2 Lisbon, Portugal: Upon arrival, you'll be met by a representative of Mayflower Cruises & Tours and transferred to your hotel. The remainder of the day is at your leisure to explore Lisbon. This evening, join your Mayflower staff and fellow travelers for an included dinner. **Meal: D**

DAY 3 Lisbon: After breakfast, an included tour highlights the famous sites of the city. During a panoramic coach tour, see 'Monument to the Discoveries,' and Belem Tower, a UNESCO World Heritage Site. Visit Jerónimos Monastery and discover the unique architecture and history. Enjoy a free afternoon to shop, dine and experience this cosmopolitan city on your own. **Meal: B**

DAY 4 Fátima – Coimbra – Porto: Depart Lisbon by coach and journey to the ship in Porto. Enroute, visit Fátima, home to the Sanctuary of Fátima, an important Catholic pilgrimage site. The city's fame originates from the apparitions of Our Lady of the Rosary that appeared to three shepherd children in the nearby fields. Continue to Coimbra and its famous university before arriving in Porto to embark the *MS Emerald Radiance*, home for the next seven nights. **Meals: B, D**

DAY 5 Porto – Pinhão: Today is a day of sailing through the twists and turns of the Douro Valley. Designated a UNESCO World Heritage Site, this area is sparsely populated by quaint villages, sun-drenched vineyards and small farms. Later today, arrive in the village of Pinhão, perfectly situated on a river bend surrounded by terraced hillsides that produce some of the world's best Port wine. Tonight, enjoy a welcome reception and dinner. **Meals: B, L, D**

EmeraldPLUS: A Portuguese cooking demonstration onboard

DAY 6 Pinhão – Vega de Terrón: Begin the day with a visit to the beautiful 18th-century estate of Quinta do Têdo Vineyard with spectacular views of the Douro Valley. Learn about wine production, its importance to the culture and economy, and enjoy a tasting of the local vintage. Alternatively, enjoy a guided walk through local vineyards OR, embark on a kayak excursion along the river. This afternoon, the ship sails for Vega de Terrón, gateway to Spain. **Meals: B, L, D**

EmeraldACTIVE*: A guided walk through the vineyards

EmeraldACTIVE*: Kayak experience in Pinhão

*The included tour and both ACTIVE tours all operate simultaneously. Only one can be selected.

DAY 7 Salamanca, Spain: Today's excursion takes you to the UNESCO World Heritage Site of Salamanca, Spain. During the guided walking tour, see amazingly detailed and intricately carved buildings of the university and the House of Shells. Regal splendor abounds in the Plaza Mayor, the heartbeat of the city. You'll have free time for lunch and to explore independently before returning to the ship in Portugal. **Meals: B, D**

EmeraldPLUS: Entertainment by a Tuna music band in Salamanca

DAY 8 Pocinho / Régua, Portugal: An early afternoon arrival brings you to Pocinho. Disembark for an included visit to the medieval town of Castelo Rodrigo. Uncover the secrets of its fortress and perhaps try some typical local products. Return to the ship for lunch and relax on deck as the ship sails through idyllic surroundings on the way to Régua. **Meals: B, L, D**

DiscoverMORE: Archaeological 4x4 Tour at Côa Museum (additional expense)

The included tour and DiscoverMORE operate at the same time.

EmeraldPLUS: Port wine cocktail lesson onboard

DAY 9 Régua – Lamego: From Régua, journey by coach to the marvelous baroque village of Lamego, home to the Sanctuary of Our Lady of Remedies - one of the most important



The quaint and historic town of Porto, Portugal

pilgrimage sites in Portugal. Visit the Sanctuary perched atop the hill, with its iconic 686-step granite staircase, decorated with the traditional Portuguese blue and white 'azulejos' tiles. This afternoon, experience a rural lunch at Quinta da Pacheca, one of the finest estates along the Douro River. Return to the ship in Régua after the excursion. This evening, enjoy local entertainment onboard. **Meals: B, L, D**

EmeraldACTIVE: Walk down the stairs of the Sanctuary

DiscoverMORE: Visit to Mateus Manor House (additional expense)

This tour operates at the same time as the included visit of Lamego. Only one can be selected.

EmeraldPLUS: Rural lunch at Quinta da Pacheca

EmeraldPLUS: Mosaic tile painting lesson onboard

DAY 10 Porto: Having traversed the Douro River, the ship returns to Porto – a city with an eclectic mix of modern and ancient architecture. An included tour highlights the sights from its scenic beauty to the historic landmarks of the Castelo da Foz and Castelo do Queijo. For those who wish to see the charms of Porto on foot, the Active walk through the town will bring you closer to the vibrant daily life of the locals. The remainder of the afternoon is at leisure in Porto. **Meals: B, L, D**

EmeraldACTIVE: A guided walk of Porto (instead of included tour)

DiscoverMORE*: Guided bike tour to the Atlantic Ocean (additional expense)

DiscoverMORE*: Visit to Quinta do Aveleda (additional expense)

EmeraldPLUS: Cruise through Porto's enchanting waters

* the DiscoverMORE's operate at the same time; only one can be selected.

DAY 11 Porto / USA: This morning, disembark the *MS Emerald Radiance* and bid a fond farewell to Portugal, filled with memories of this remarkable cruise along the 'River of Gold.' **Meal: B**

Itinerary is subject to change.



Exceptional Inclusions

- **22 Meals:** 9 breakfasts, 5 lunches and 8 dinners
- **Airport transfers** on tour dates when air is provided by Mayflower Cruises & Tours
- **Visit two countries**
- Two-night **hotel stay and touring** in Lisbon, Portugal before cruising
- **Seven-night cruise** on the *Emerald Radiance*
- **First-class service** by an English-speaking crew
- **Onboard Activity Manager** will support all EmeraldACTIVE excursions and host daily onboard wellness activities, games, classes and evening entertainment
- **Shore excursions** with English-speaking **local guides**
- All **gratuities included**
- Personal **listening device** for onboard excursions
- Many meals included onboard with a **variety of international cuisine**
- Complimentary **regional wines, beer and soft drinks** accompany onboard lunches and dinners
- Complimentary **bottled water** in your stateroom
- Complimentary **WiFi onboard**
- Variety of **onboard evening entertainment**

CRUISE AND HOTEL ACCOMMODATIONS

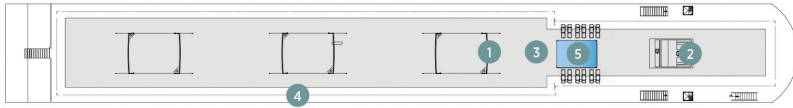
Days 2 and 3 – Avani Hotel or similar, Lisbon, Portugal

Days 4 through 10 – Aboard the *MS Emerald Radiance*

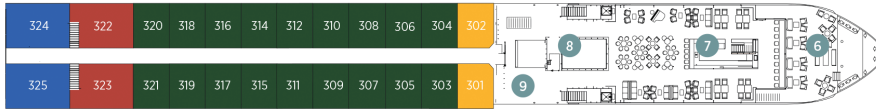
MS Emerald Radiance

Built: 2017 **Speed:** 15.5 mph **Staterooms:** 10 **Suites:** 46 **Length:** 292 ft. **Crew:** 37

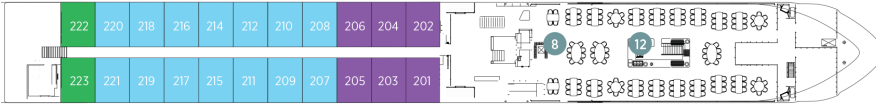
SUN DECK



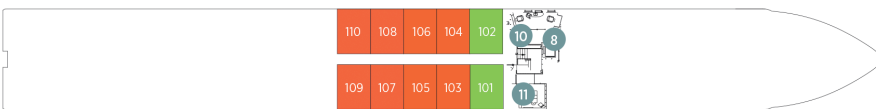
HORIZON DECK



VISTA DECK

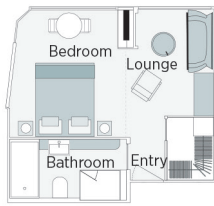


RIVIERA DECK



Public Areas and Ship Amenities

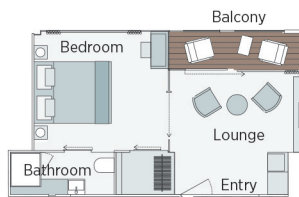
- 1 Sun Deck with Deck Chairs
- 2 Navigation Bridge
- 3 Sky Barbeque
- 4 Walking Track
- 5 Serenity Pool
- 6 The Terrace
- 7 Horizon Bar & Lounge
- 8 Elevator
- 9 Reception
- 10 Wellness Area
- 11 Fitness Area
- 12 Reflections Restaurant



Emerald Riverview Suite

300ft²

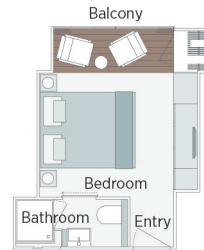
CAT RA



Owner's One-Bedroom Suite

285ft²

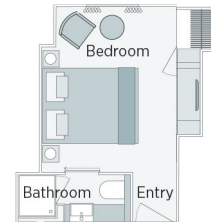
CAT SA



Panorama Balcony Suite

160ft² – 180ft²

CAT B CAT C CAT R CAT A CAT P



Emerald Stateroom

153ft² – 170ft²

CAT D CAT E

Portugal and the Douro River Cruise

		May 27 – June 6, 2026		
CAT	STATEROOM / SUITE	DECK	PER PERSON TWIN	CRESCENT PRICE
E	Emerald Stateroom	Riviera	\$5,849-	\$5,557
D	Emerald Stateroom	Riviera	\$6,079-	\$5,775
C	Panorama Balcony Suite	Vista	\$6,425	\$6,104
B	Panorama Balcony Suite	Vista	\$6,529	\$6,203
R	Panorama Balcony Suite	Vista	\$6,875	\$6,531
A	Panorama Balcony Suite	Horizon	\$7,275	\$6,911
P	Panorama Balcony Suite	Horizon	\$7,439	\$7,067
SA	Owner's One-Bedroom Suite	Horizon	\$7,955	\$7,557
RA	Riverview Suite	Horizon	\$8,069	\$7,666

Prices included ROUNDTrip AIR from any US gateway, when booked by July 1st, 2025



Travelers Protection Plan (TPP) for River Cruises - \$569 per person

This nonrefundable fee will provide a refund to you during the instance that you have to cancel your trip. The cancellation has to be for a covered reason (see Plan for details on coverage) and we have to be notified at least one day prior to departure. If you must leave the tour early due to personal illness or the illness or death of an immediate family member, TPP will provide a refund for any unused services after the departure of the tour. Other benefits include medical expenses for illness and injury, emergency transportation, 24 hour hot line and lost or stolen baggage assistance. Return air transportation is included ONLY if your air tickets are purchased through Mayflower Cruises & Tours. Please review the Plan for details on coverage. Should you choose not to purchase our TPP, the following per person cancellation charges will be assessed for all tours and optional excursion costs:

- 91 days or more prior to departure: Deposit Amount
- 90 days to day of departure: 100% of total tour
- No refund on unused portions of the tour

Exclusions: Mayflower Cruises & Tours reserves the right to alter its Refund and Cancellation Policy when a substantial amount of cancellation or postponement of travel is attributable to: conditions resulting from an act of God, natural or man-made disaster, fire, government action, civil disorder, war, hostilities between nations, or unavailability of transportation through no fault of Mayflower Cruises & Tours. *Plan and benefits offered and administered by Trip Mate, Inc.*



FOR INFORMATION:
Contact your Club Trip Leader

FOR RESERVATIONS:
Obtain a reservation form at
www.crescentskicouncil.org