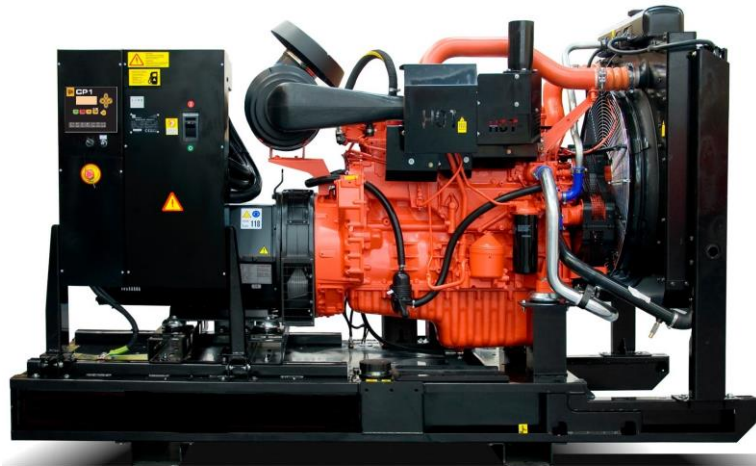


# G600X | G600QX



**DIESEL GENERATOR**

**FUEL OPTIMISED**

## ELECTRICAL

Frequency (Hz)	Phases	Voltage (V)	Prime		Standby		Rated Speed (RPM)
			kVA	kW	kVA	kW	
50	3	400/230V	550	440	590	472	1500
60	3	480/277V	551	441	607	486	1800

## POWER FACTOR

3 Phase	0.8
1 Phase	1

## ALL RATINGS ARE TO STANDARD REFERENCE CONDITIONS ISO 8528

**Prime:** This rating is for the supply of continuous electrical power, at variable load, in lieu of commercially purchase power. There is no limitation on the annual hours of operation and 10% over load power can be supplied for 1 hour in 12.

**Standby:** This rating is for the supply of continuous electrical power, at variable load, in the event of a utility power failure. No overload is permitted.

"Stage IIIa" models are only emissions compliant at 50Hz Prime Power in accordance with 97-68EC.

**JCB GENERATOR TECHNICAL SPECIFICATIONS.** Tel: +44 (0)1889 590312. [www.jcbgenerators.com](http://www.jcbgenerators.com). JCB reserves the right to change specifications without notice. Illustrations shown may include optional equipment and accessories.

## FUEL CONSUMPTION

100% Load Prime	L/h	50Hz	104.50
75% Load Prime	L/h		78.40
50% Load Prime	L/h		53.60
100% Load Standby	L/h		117.80
100% Load Prime	L/h	60Hz	108.30
75% Load Prime	L/h		81.60
50% Load Prime	L/h		56.60
100% Load Standby	L/h		120.20

## EXHAUST SYSTEM

Maximum Temperature 100% Standby	°C	50Hz	501
Exhaust Gas Flow 100% Standby	kg/s		N/A
Maximum Allowed Back Pressure	mbar		-
Maximum Temperature 100% Standby	°C	60Hz	465
Exhaust Gas Flow 100% Standby	kg/s		N/A
Maximum Allowed Back Pressure	mbar		-

## AIR SYSTEM

Intake Air Flow 100% Standby	m³/h	50Hz	2067
Total Cooling Air Flow 100% Standby	m³/s		14.3
Alternator Fan Airflow	m³/s		1.035
Intake Air Flow 100% Standby	m³/h	60Hz	2319
Total Cooling Air Flow 100% Standby	m³/s		16.8
Alternator Fan Airflow	m³/s		1.312

## ENGINE

1500 RPM		
Output Rating (PRP)	kW	473
Output Rating (Standby)	kW	522
1800 RPM		
Output Rating (PRP)	kW	468.0
Output Rating (Standby)	kW	517.0
Manufacturer and Model		Scania DC16-93A (02-52)
Fuel		Diesel
Injection		Direct
Aspiration		Turbo Charged and Aftercooled
Cylinders		V8
Bore and Stroke	mm	130 x 154
Displacement	L	16.40
Cooling		Water
Engine Oil Specification		ACEA E3, E4, E5 or E6
Compression Ratio		16.7:1
Engine Oil Capacity	L	48.00
Coolant Capacity	L	68.00
Governor		Electronic
Air Filter		Dry
Engine Oil Consumption	100% Load	0.2 g/kWh

## FUEL SYSTEM

Diesel Specification		EN590
----------------------	--	-------

## ALTERNATOR

Poles	4
Winding Connections	Star-Series
Insulation	Class H
Enclosure	IP23
Exciter System	Self-excited brushless
Voltage Regulator	AVR (electronic)
Steady State Voltage Regulation	+/- 1.0%
Bearing	Single bearing
Coupling	Flexible disc
Cooling	Direct drive centrifugal blower fan
Coating	Standard (Vacuum Impregnation)

## STARTING SYSTEM

Starter Motor	kW	7
Auxiliary Voltage	V	24
Number of Batteries		2

## BATTERY FEATURES

Battery Isolator	●
Battery Size (Ah)	75
Number of Batteries	2
Battery Charger	●
Standard: ●      Not Available: x      Optional: Δ	

## MECHANICAL FEATURES

Cooling Pack	●
Air Filter	●
Mechanical Governor	x
Electronic Governor	●
High Coolant Temperature Sender	x
Low Oil Pressure Sender	x
Advanced Coolant Temperature Sender	●
Advanced Oil Pressure Sender	●
Oil Temperature Sender	●
Water Level Sender	●
Radiator Guards	●
Hot Component Guards	●
Water Jacket Heater	●
Manual Fuel Fill	Δ
Electric Fuel Fill	Δ
Racor Fuel Filter (No Alarm)	Δ
Racor Fuel Filter (With Alarm)	Δ
Pre-Filter with Separator	x
External Spark Arrestor	Δ
Fuel Level Sender	●
Industrial Silencer	●
Standard: ●      Not Available: x      Optional: Δ	

# G600X | G600QX



## ELECTRICAL FEATURES

AVR DSR	●
AVR DER	x
Winding Protection Standard	●
Winding Protection Standard +	x
Winding Protection Grey	x
Winding Protection Total	x
Winding Protection Total +	x
MAUX	x
PMG	Δ
Anti-Condensation Heater	Δ
Miniature Circuit Breaker (Integrated busbar)	x
Moulded Case Circuit Breaker (with integrated busbar)	●
Earth Leakage Protection (Shunt Trip)	●
Synchronisation	Δ
Preparation for Earth Spike	●
Remote Screen	Δ
Panel Door Micro Switch	Δ
Copper Busbar/Tails	Δ
Emergency Stop Button	●
Standard: ● Not Available: x Optional: Δ	

## JCB COMMUNICATION AND CONTROL

CPI	Δ
CP2	Δ
ATP	Δ
DSE7320	●
JCB LiveLink	●
Standard: ● Not Available: x Optional: Δ	

## SYNCHRONISATION PANEL

DSE8610	Δ
DSE8620	Δ
Standard: ● Not Available: x Optional: Δ	

## REFERENCE STANDARDS

JCB Generators are CE certified and conform to the following Directives (subject to a country requiring such standard):

- EN 12100, EN13857, EN60204
  - 2006/42/CE Machinery safety
  - 2006/95/EC Low voltage
  - 2004/108/CE Electromagnetic compatibility
  - 2000/14/EC Sound Power Level (amended by 2005/88/EC)
  - 97/68/EC Emissions(amended by 2002/88/EC & 2004/26/EC)
  - Power according to ISO 8528 and ISO 3046
  - Ambient reference conditions 1000mbar, 25°C, 30% relative humidity ISO3046
- Information based on standard specification equipment unless otherwise stated.

# G600X | G600QX



## WEIGHT AND DIMENSIONS – OPEN SET

Length	mm	3600
Width	mm	1460
Height	mm	2096
Shipping Volume (sea ready)	m <sup>3</sup>	11.00
Weight*	Kg	3371

*\*Standard build with all fluids except fuel*

## WEIGHT AND DIMENSIONS – CANOPY SET

Length	mm	4500
Width	mm	1800
Height	mm	2340
Shipping Volume (sea ready)	m <sup>3</sup>	18.95
Weight*	Kg	5081

*\*Standard build with all fluids except fuel*

## SOUND PRESSURE (CANOPY ONLY)

LpA (7m)	50Hz	dB(A)	73
LpA (7m)	60Hz	dB(A)	73

## FUEL TANK

	Material	Capacity (L)
Open Set	Steel	740
Canopy Set	Steel	740

## CANOPY FEATURES

Lockable Maintenance Access Doors	●
Control Panel Viewing Window	●
Fork Pockets	●
Single Lift Point	●
Rental Sledging Base	Δ
Bunding	●
Bund Level Indicator	Δ
50mm Rock Wool Sound Insulation	●
Yellow Paint	●
Red Paint	Δ
White Paint	Δ
Manual Oil Drain Pump (Canopy)	●
Residential Silencer	●
3 Way Fuel Valve and Coupling Nest	Δ
Socket Box (inclusive of heavy duty busbar & micro switch)	Δ
External Emergency Stop Button	●
Standard: ● Not Available: x Optional: Δ	