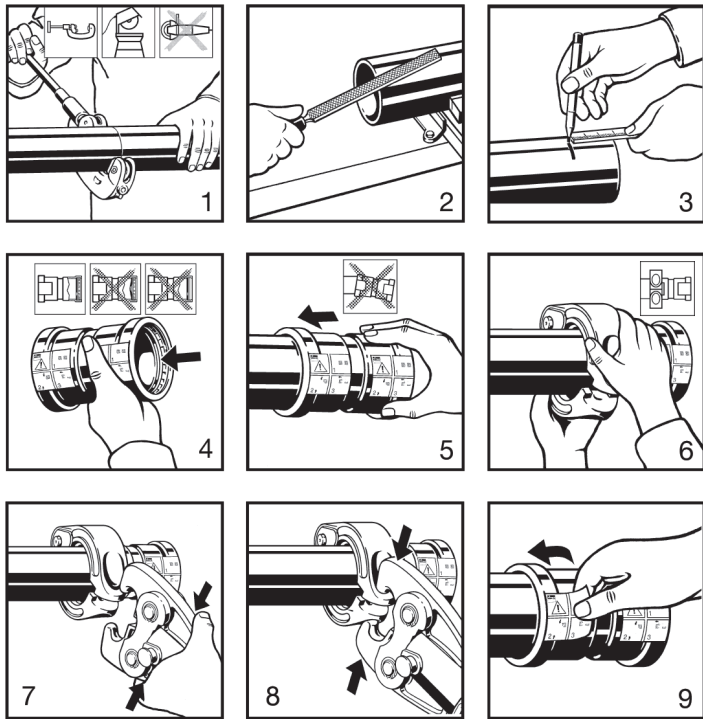


## LARGE DIAMETER (LD)



**WARNING.** Read and understand all instructions for installing CopperPress™. Failure to follow all instructions may result in extensive property damage, serious injury or death.

1. Cut copper tubing at right angle using displacement type cutter or fine-toothed steel saw.
2. Remove burr from inside and outside of tubing to prevent cutting sealing element.
3. Measure and mark Proper insertion depth as indicated by the CopperPress™ insertion depth chart.  
*Note:* Improper insertion may result in improper seal.
4. Check sealing element in CopperPress™ product for correct fit. Do not use oils or lubricants. Use only CopperPress™ sealing elements.
5. While turning slightly, slide press fitting onto tubing to the marked depth or until fully seated on stop.
6. Using approved CopperPress™ Press tool and jaw/rings sets place the ring over the fitting at the bead to be pressed.
7. Open the Jaw on the press tool and close on the appropriate location on the ring.
8. Start the pressing process by holding the trigger continuously until the tool has made a complete press cycle.
9. After tool has completed a full press cycle the jaw and ring can be opened and removed. Remove the application label sticker to complete the process.

**Copper Press Insertion Depth Chart**

Tube Size	2 ½"	3"	4"
Insertion Depth	1 11/16"	1 15/16"	2 3/8"

**LEAK TESTING.** Unpressed connections are located by pressurizing the system with air or water. When testing with water the proper pressure range is 15 psi to 85 psi maximum. Leak testing with air can be dangerous at high pressures. When testing with compressed air the proper pressure range is ½ psi to 45 psi maximum. Following a successful leak test, the system may be pressure tested up to 200 psi with air, or up to 600 psi with water, if required by local code requirements or project specifications.