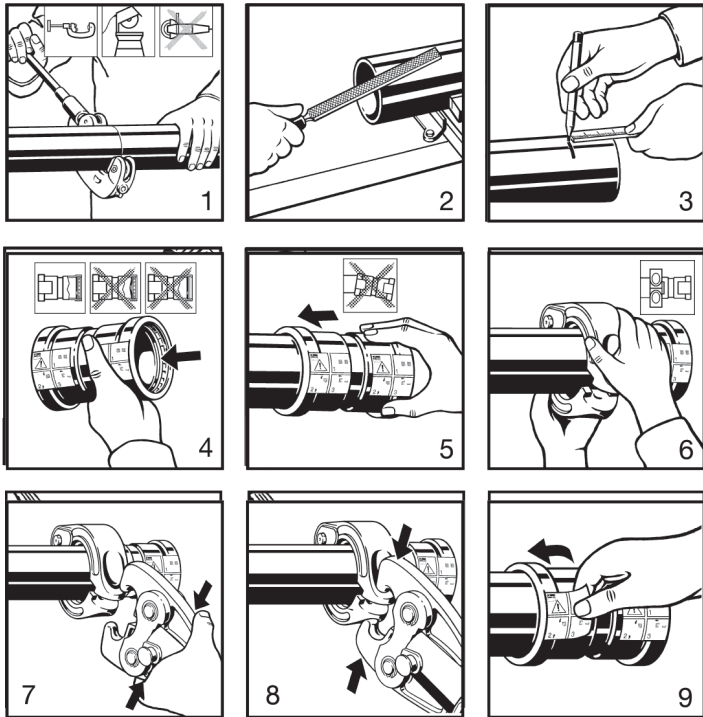


## LARGE DIAMETER (LD)



| CopperPress® Insertion Depth Chart |          |          |        |
|------------------------------------|----------|----------|--------|
| Tube Size                          | 2 1/2"   | 3"       | 4"     |
| Insertion Depth                    | 1 11/16" | 1 15/16" | 2 3/8" |

CopperPress® fittings can be pressed with Milwaukee, REMS, Rigid and Rothenberger tools and associated CTS jaws. Contact Supply Source Products' Customer Service for specific jaw set compatibility.

**WARNING.** Fully read all CopperPress® installation instructions. Failure to follow all instructions may result in extensive property damage, serious injury or death.

- 1) Cut copper tubing perpendicularly using a tubing cutter or fine-toothed saw.
- 2) Remove burrs from the inside and outside of tubing using a round file or deburring tool. Failure to fully deburr may result in sealing element cutting during tube insertion and failure in service.
- 3) Mark prescribed insertion depth on outside of tubing per the CopperPress® Insertion Depth Chart below.
- 4) Check sealing element for presence and correct fit. No lubricants are required. Use only CopperPress® sealing elements.
- 5) With a twisting motion slide press fitting onto tubing to the marked depth.
- 6) Place approved and appropriately sized ring over the fitting bead to be pressed.
- 7) Open the jaw on the press tool and affix to ring.
- 8) Start the pressing process by holding the tool trigger until the tool makes a complete press cycle.
- 9) After the pressing cycle is completed, the jaw and ring can be removed. Remove the application label sticker to complete the process. Inspect the completed connection for correct tubing insertion depth, misalignment or incomplete pressing. Slight torsional adjustment (5 degrees or less) can be made after pressing. More significant rotations require the joint to be repressed.

Leak Testing – Unpressed connections can be easily identified by pressuring the system with air (45 psi max) or water (85 psi max), or per local codes.