



Job Name	
Job Location	
P.O.#	
Engineer	
Contractor	
Wholesaler	
CopperPress® Rep	

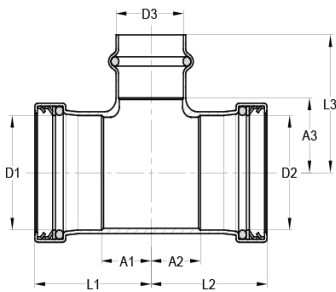
Description: CopperPress® XL Press Unequal Tee is available in sizes 2½” – 4” and is made of lead-free dezincification resistant copper with an EPDM or HNBR o-ring. CopperPress® fittings are designed to be used with ASTM B88 Type K, L and M copper tubing in the hard-drawn condition.

Features:

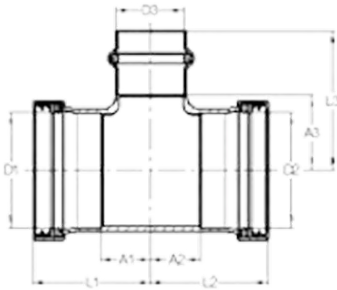
- **Visual Indicator Press Ring (VPR)** – facilitates immediate identification of un-pressed connections
- **Leak Before Press** – in addition to the VPR, valve incorporates four path LBP technology, guaranteeing a visual indication if not pressed
- **Permanent Application Marking** – imprinted on fitting body for quick H₂O or gas application identification
- **Lead Free Construction** – fully compliant with current lead-free laws
- **Copper Ends** - protect against dezincification and stress corrosion cracking

Operational Parameters: Operating / Test Pressure = 300 psi / 600 psi, Temperature Range 0°F - 250°F

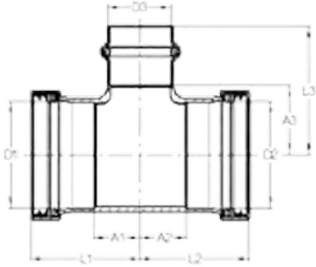
Approvals: NSF ANSI/CAN 61, UPC, cUPC, IPC, IAPMO PS-117, ICC-ES-PMG, ASME B16.51



Item Number	D1 (in)	D2 (in)	D3 (in)	L1 (in)	A1 (in)	L2 (in)	A2 (in)	L3 (in)	A3 (in)
24110	2½”	¾”	2½”	3.56	1.83	4.17	3.23	3.66	1.93
24120	2½”	1”	2½”	3.56	1.83	4.19	3.25	3.60	1.87
24130	2½”	1¼”	2½”	3.56	1.83	4.35	3.21	3.60	1.87
24140	2½”	1½”	2½”	3.56	1.83	4.61	3.15	3.60	1.87
24150	2½”	2”	¾”	3.25	1.52	3.72	2.11	3.74	2.80
24160	2½”	2”	1”	3.25	1.52	3.72	2.11	3.54	2.60



Item Number	D1 (in)	D2 (in)	D3 (in)	L1 (in)	A1 (in)	L2 (in)	A2 (in)	L3 (in)	A3 (in)
24165	2½"	2"	¼"	3.25	1.52	3.72	2.11	3.58	2.44
24170	2½"	2"	½"	3.25	1.52	3.72	2.11	3.74	2.28
24180	2½"	2"	2"	3.25	1.52	3.72	2.11	3.43	1.81
24190	2½"	2"	2½"	3.56	1.83	3.56	1.95	3.66	1.93
24200	2½"	2½"	½"	3.25	1.52	3.25	1.52	3.66	2.85
24210	2½"	2½"	¾"	3.25	1.52	3.25	1.52	3.70	2.76
24220	2½"	2½"	1"	3.25	1.52	3.25	1.52	3.58	2.64
24230	2½"	2½"	1¼"	3.25	1.52	3.25	1.52	3.58	2.44
24240	2½"	2½"	1½"	3.25	1.52	3.25	1.52	3.74	2.28
24250	2½"	2½"	2"	3.25	1.52	3.25	1.52	3.43	1.81
24270	3"	¾"	3"	4.11	2.11	5.10	4.15	4.31	2.30
24280	3"	1"	3"	4.11	2.11	4.92	3.98	4.31	2.30
24290	3"	1¼"	3"	4.11	2.11	5.02	3.88	4.31	2.30
24300	3"	1½"	3"	4.11	2.11	5.10	3.64	4.31	2.30
24310	3"	2"	2"	3.64	1.63	4.35	2.74	3.76	2.15
24320	3"	2"	2½"	3.98	1.97	4.69	3.07	4.00	2.26
24330	3"	2"	3"	4.11	2.11	4.55	2.93	4.31	2.30
24340	3"	2½"	2"	3.64	1.63	4.15	2.42	3.76	2.15
24350	3"	2½"	2½"	3.98	1.97	4.49	2.76	4.00	2.26
24360	3"	2½"	3"	4.11	2.11	4.74	3.01	4.31	2.30
24370	3"	3"	½"	3.64	1.63	3.64	1.63	4.07	3.27
24380	3"	3"	¾"	3.64	1.63	3.64	1.63	4.15	3.21
24390	3"	3"	1"	3.64	1.63	3.64	1.63	3.96	3.01



Item Number	D1 (in)	D2 (in)	D3 (in)	L1 (in)	A1 (in)	L2 (in)	A2 (in)	L3 (in)	A3 (in)
24400	3"	3"	1/4"	3.64	1.63	3.64	1.63	4.07	2.93
24410	3"	3"	1/2"	3.64	1.63	3.64	1.63	4.31	2.85
24420	3"	3"	2"	3.64	1.63	3.64	1.63	3.76	2.15
24430	3"	3"	2 1/2"	3.98	1.97	3.98	1.97	4.00	2.26
24450	4"	3"	2"	4.02	1.61	4.80	2.80	3.25	1.63
24460	4"	3"	3"	4.51	2.11	4.82	2.81	4.63	2.62
24470	4"	4"	1/2"	4.02	1.61	4.02	1.61	4.63	3.82
24480	4"	4"	3/4"	4.02	1.61	4.02	1.61	4.59	3.64
24490	4"	4"	1"	4.02	1.61	4.02	1.61	4.43	3.48
24500	4"	4"	1 1/4"	4.02	1.61	4.02	1.61	4.43	3.29
24510	4"	4"	1 1/2"	4.02	1.61	4.02	1.61	4.59	3.13
24520	4"	4"	2"	4.02	1.61	4.02	1.61	4.23	2.62
24530	4"	4"	2 1/2"	4.17	1.77	4.17	1.77	4.47	2.74
24540	4"	4"	3"	4.51	2.11	4.51	2.11	4.59	2.58
24550	4"	3"	2"	4.02	1.61	4.80	2.80	3.25	1.63

