



<b>Job Name:</b>	
<b>Job Location:</b>	
<b>P.O.#:</b>	
<b>Engineer:</b>	
<b>Contractor:</b>	
<b>Wholesaler:</b>	
<b>CopperPress Rep:</b>	

**Description:** CopperPress® XL Press Unequal Tee is available in sizes 2½" – 4" and is made of lead-free dezincification resistant copper with an EPDM or HNBR o-ring. CopperPress® fittings are designed to be used with ASTM B88 Type K, L and M copper tubing in the hard-drawn condition.

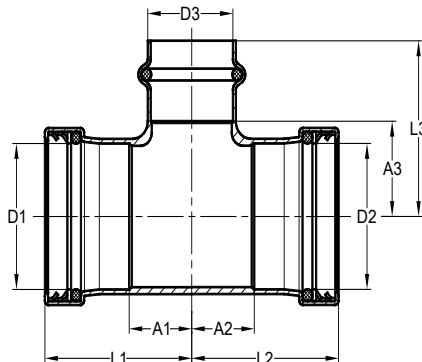
**Features:**

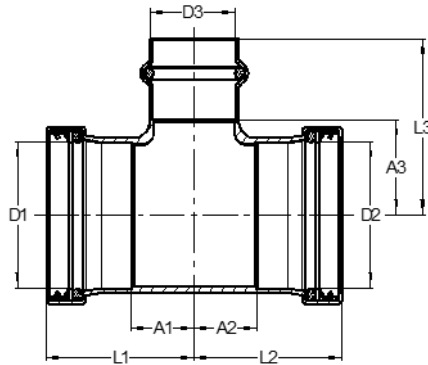
- **Visual Indicator Press Ring (VIPR)** – facilitates immediate identification of un-pressed connections as well as application – green = EPDM (H<sub>2</sub>O), yellow = HNBR (gas)
- **Leak Before Press** – in addition to the VIPR, fitting incorporates four path LBP technology, guaranteeing a visual indication if not pressed
- **Permanent Application Marking** – imprinted on fitting body for quick H<sub>2</sub>O or gas application identification
- **Lead Free Construction** – fully compliant with current lead-free laws

**Operational Parameters:** Operating / Test Pressure = 300 psi / 600 psi, Temperature Range 0°F - 250°F

**Approvals:** NSF ANSI/CAN 61, UPC, cUPC, IPC, IAPMO PS-117, ICC-ES-PMG, ASME B16.51

Item #	Size D1	Size D2	Size D3	L1 (in)	A1 (in)	L2 (in)	A2 (in)	L3 (in)	A3 (in)
24110	2½"	¾"	2½"	3.56	1.83	4.17	3.23	3.66	1.93
24120	2½"	1"	2½"	3.56	1.83	4.19	3.25	3.60	1.87
24130	2½"	1¼"	2½"	3.56	1.83	4.35	3.21	3.60	1.87
24140	2½"	1½"	2½"	3.56	1.83	4.61	3.15	3.60	1.87
24150	2½"	2"	¾"	3.25	1.52	3.72	2.11	3.74	2.80
24160	2½"	2"	1"	3.25	1.52	3.72	2.11	3.54	2.60



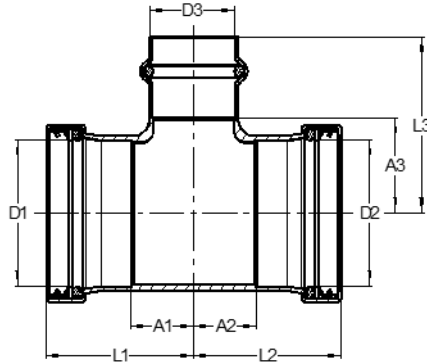


Item #	Size D1	Size D2	Size D3	L1 (in)	A1 (in)	L2 (in)	A2 (in)	L3 (in)	A3 (in)
24165	2½"	2"	1¼"	3.25	1.52	3.72	2.11	3.58	2.44
24170	2½"	2"	1½"	3.25	1.52	3.72	2.11	3.74	2.28
24180	2½"	2"	2"	3.25	1.52	3.72	2.11	3.43	1.81
24190	2½"	2"	2½"	3.56	1.83	3.56	1.95	3.66	1.93
24200	2½"	2½"	½"	3.25	1.52	3.25	1.52	3.66	2.85
24210	2½"	2½"	¾"	3.25	1.52	3.25	1.52	3.70	2.76
24220	2½"	2½"	1"	3.25	1.52	3.25	1.52	3.58	2.64
24230	2½"	2½"	1¼"	3.25	1.52	3.25	1.52	3.58	2.44
24240	2½"	2½"	1½"	3.25	1.52	3.25	1.52	3.74	2.28
24250	2½"	2½"	2"	3.25	1.52	3.25	1.52	3.43	1.81
24270	3"	¾"	3"	4.11	2.11	5.10	4.15	4.31	2.30
24280	3"	1"	3"	4.11	2.11	4.92	3.98	4.31	2.30
24290	3"	1¼"	3"	4.11	2.11	5.02	3.88	4.31	2.30
24300	3"	1½"	3"	4.11	2.11	5.10	3.64	4.31	2.30
24310	3"	2"	2"	3.64	1.63	4.35	2.74	3.76	2.15
24320	3"	2"	2½"	3.98	1.97	4.69	3.07	4.00	2.26
24330	3"	2"	3"	4.11	2.11	4.55	2.93	4.31	2.30
24340	3"	2½"	2"	3.64	1.63	4.15	2.42	3.76	2.15
24350	3"	2½"	2½"	3.98	1.97	4.49	2.76	4.00	2.26
24360	3"	2½"	3"	4.11	2.11	4.74	3.01	4.31	2.30
24370	3"	3"	½"	3.64	1.63	3.64	1.63	4.07	3.27
24380	3"	3"	¾"	3.64	1.63	3.64	1.63	4.15	3.21
24390	3"	3"	1"	3.64	1.63	3.64	1.63	3.96	3.01
24400	3"	3"	1¼"	3.64	1.63	3.64	1.63	4.07	2.93
24410	3"	3"	1½"	3.64	1.63	3.64	1.63	4.31	2.85
24420	3"	3"	2"	3.64	1.63	3.64	1.63	3.76	2.15
24430	3"	3"	2½"	3.98	1.97	3.98	1.97	4.00	2.26
24450	4"	3"	2"	4.02	1.61	4.80	2.80	3.25	1.63
24460	4"	3"	3"	4.51	2.11	4.82	2.81	4.63	2.62
24470	4"	4"	½"	4.02	1.61	4.02	1.61	4.63	3.82
24480	4"	4"	¾"	4.02	1.61	4.02	1.61	4.59	3.64
24490	4"	4"	1"	4.02	1.61	4.02	1.61	4.43	3.48



# Submittal Sheet

## XL Press Unequal Tee



Item #	Size D1	Size D2	Size D3	L1 (in)	A1 (in)	L2 (in)	A2 (in)	L3 (in)	A3 (in)
24500	4"	4"	1¼"	4.02	1.61	4.02	1.61	4.43	3.29
24510	4"	4"	1½"	4.02	1.61	4.02	1.61	4.59	3.13
24520	4"	4"	2"	4.02	1.61	4.02	1.61	4.23	2.62
24530	4"	4"	2½"	4.17	1.77	4.17	1.77	4.47	2.74
24540	4"	4"	3"	4.51	2.11	4.51	2.11	4.59	2.58