

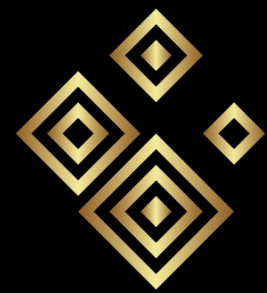


GOLDENAI

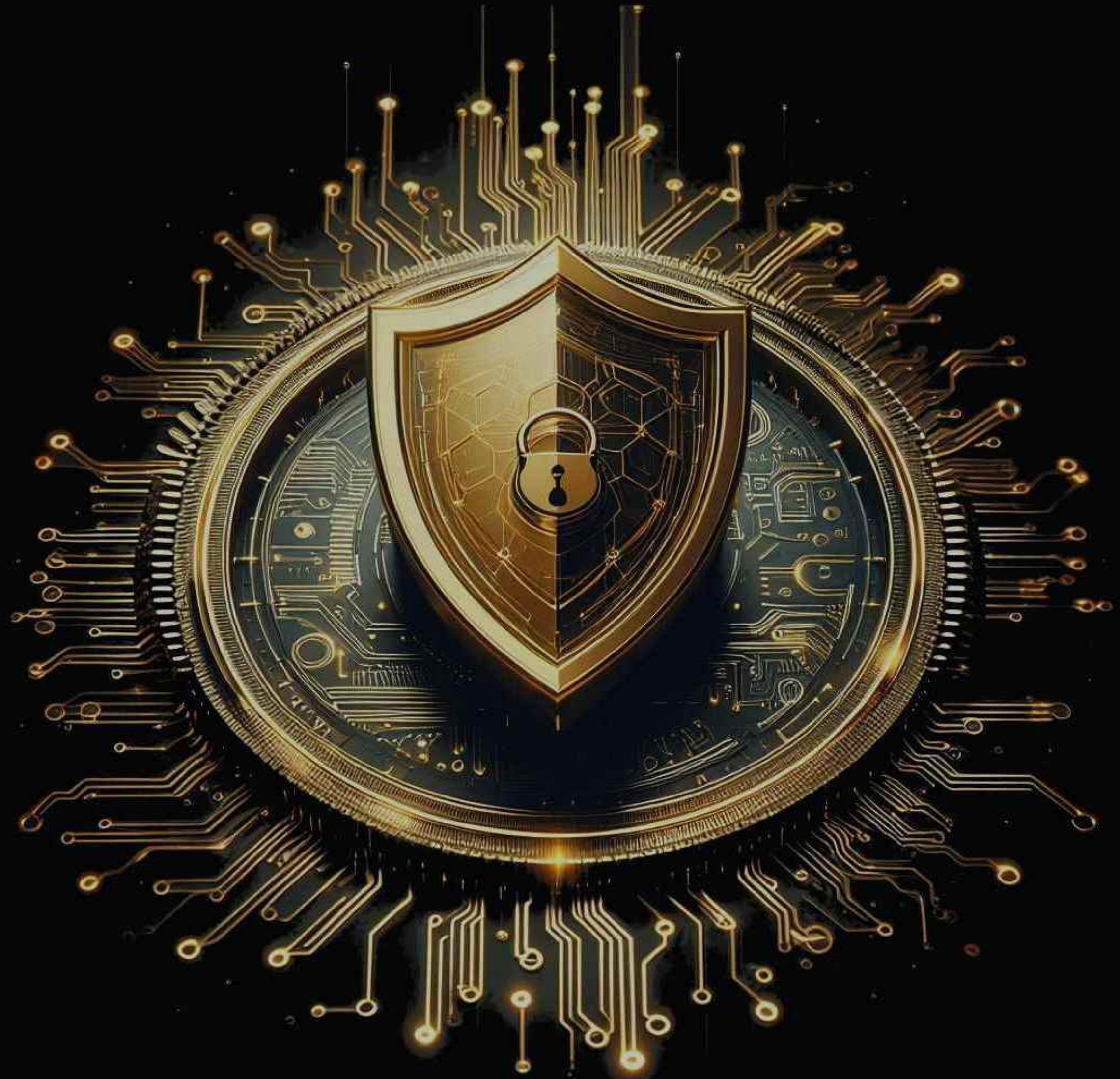
TECH TO PROTECT

**AI VISUAL THREAT
PREVENTION SYSTEM
PRESENTATION**

**PRESENTED AND
POWERED BY:**



**GoldenSand
GROUP**



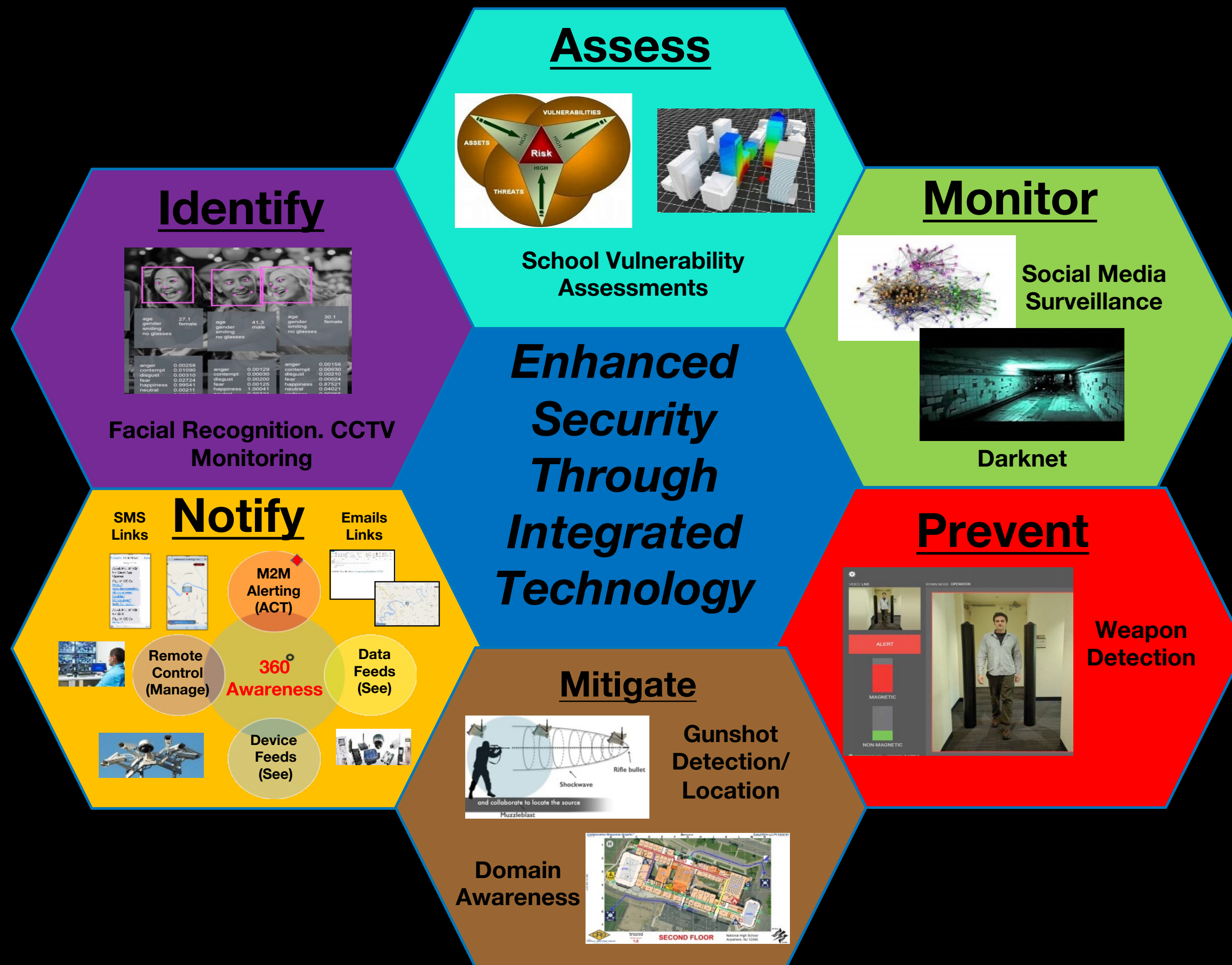


THREAT ANALYSIS COMBINED WITH AN INNOVATIVE INTEGRATED SOLUTION

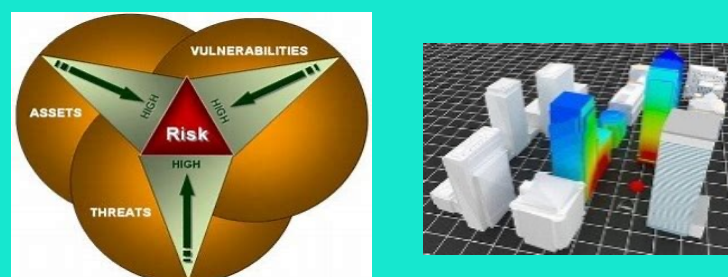
- ❑ Tomorrow's threat landscape is changing for schools around the world. Schools can no longer rely solely on physical security guards to maintain safety or mitigate risk.
 - ❑ This looming threat landscape requires an integrated 360° perimeter approach – and only **GoldenAI™** is ready to rise to that challenge. This breakthrough 360° multi-domain techno-deterrence is called **GoldenAI Perimeter™**.
- Goldenai™** senior management has served in critical leadership roles with both FBI and INTERPOL, military intelligence, cyber ops, and private sector Fortune 500 companies.
- ❑ Many schools and local agencies routinely employ security officers who are not implementing a coordinated “defense in depth” approach or holistic security approach.
 - ❑ These organizations currently employ multiple “one off” vendors to support their security needs. These single solutions do not communicate and are not integrated into a single pane of glass view. The resulting fragmented information does not allow the school security officers or officials to have full situational awareness.
 - ❑ For the first time, organizations can take a “Total Solutions” approach, having **Goldenai™** provide all segments of a required solution. Our “interoperability” allows schools to continue employing their existing security investments.



- ❑ **Goldenai™** is a Technology Enabled Security Service Provider which has designed its Safe-In-School solution. Safe-In-School is an integrated framework and suite of tools to protect and address the threats facing the nation's schools by enhancing security through the integration of multiple technologies.
- ❑ This company combines best-in-class technology delivered by top security industry veterans with the goal of providing a single, integrated, and complete security solutions.
- ❑ **Goldenai™** "defense in depth" full life cycle delivery allows school security officers and officials to not only understand the threats but to address all the threats they face challenges from.



Assess

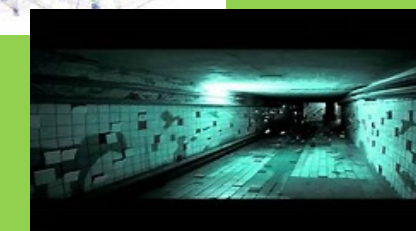


School Vulnerability Assessments

Monitor

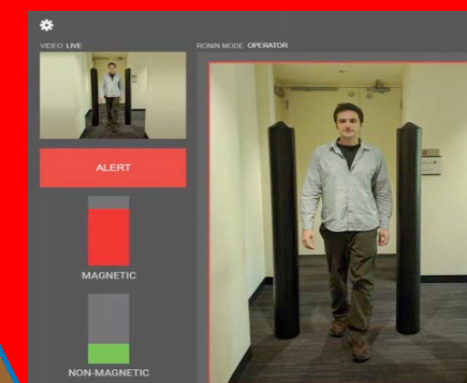


Social Media Surveillance



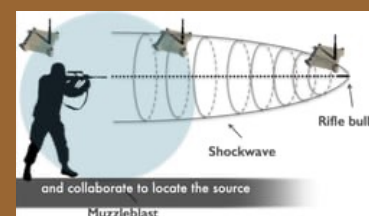
Darknet

Prevent



Weapon Detection

Mitigate



Gunshot Detection/Location

Domain Awareness



Identify



Facial Recognition. CCTV Monitoring

Notify

SMS Links

Emails Links

M2M Alerting (ACT)

360° Awareness

Data Feeds (See)

Device Feeds (See)

Remote Control (Manage)





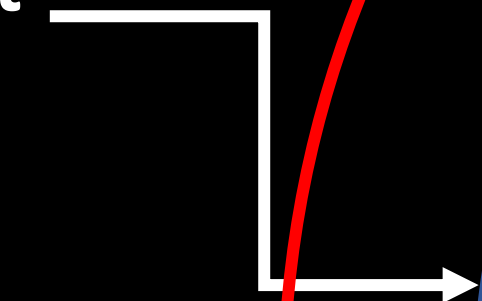
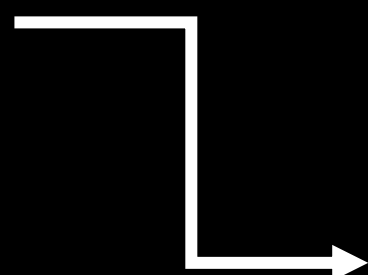
**Social Media
Monitoring
and Geofencing**





**Social Media
Monitoring
and Geofencing**

**Perimeter Cameras
and facial/object
recognition**

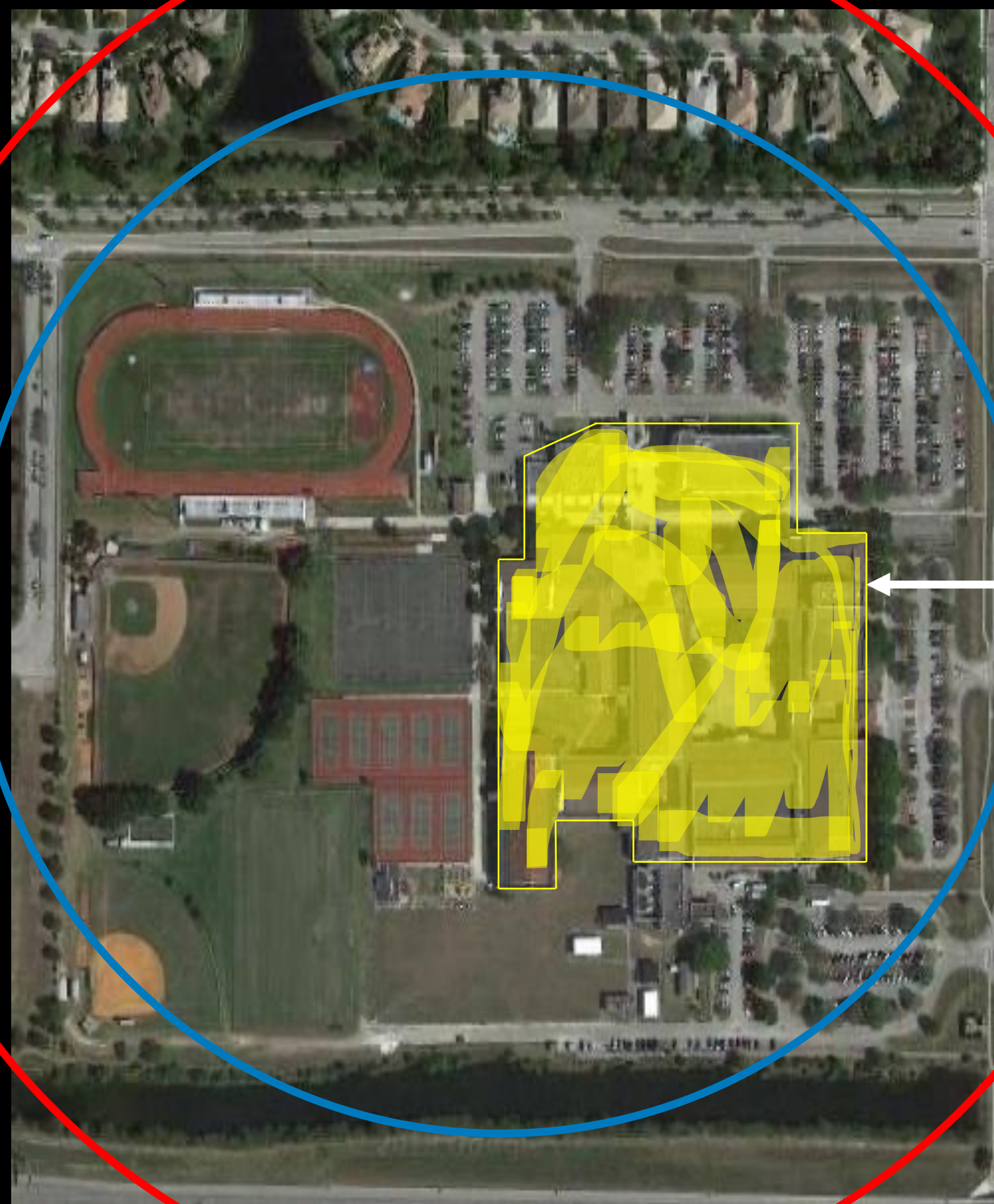


PREVENT - WEAPONS DETECTION



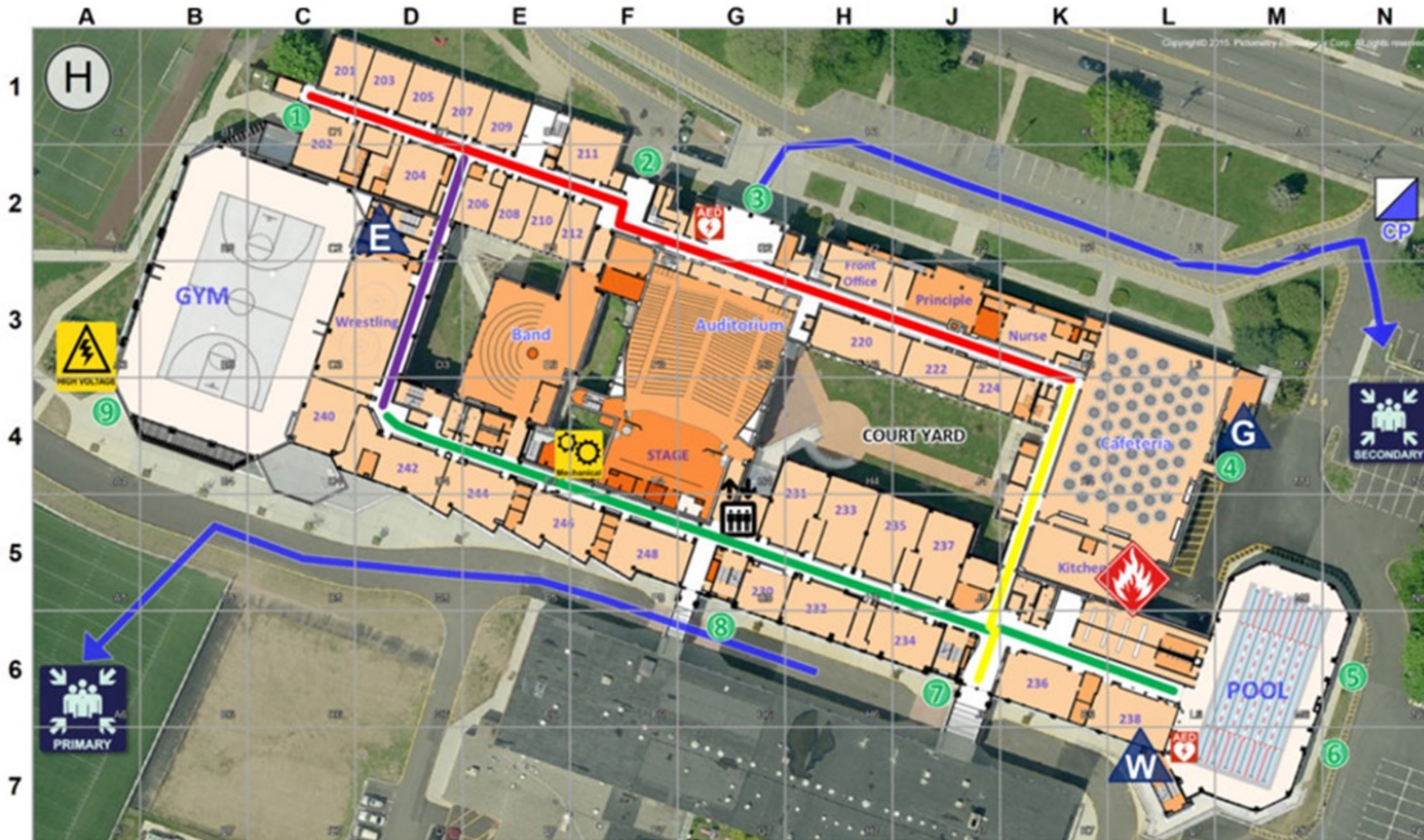
**Social Media
Monitoring
and Geofencing**

**Perimeter cameras
and facial/object
recognition**



**Weapons
Detection**



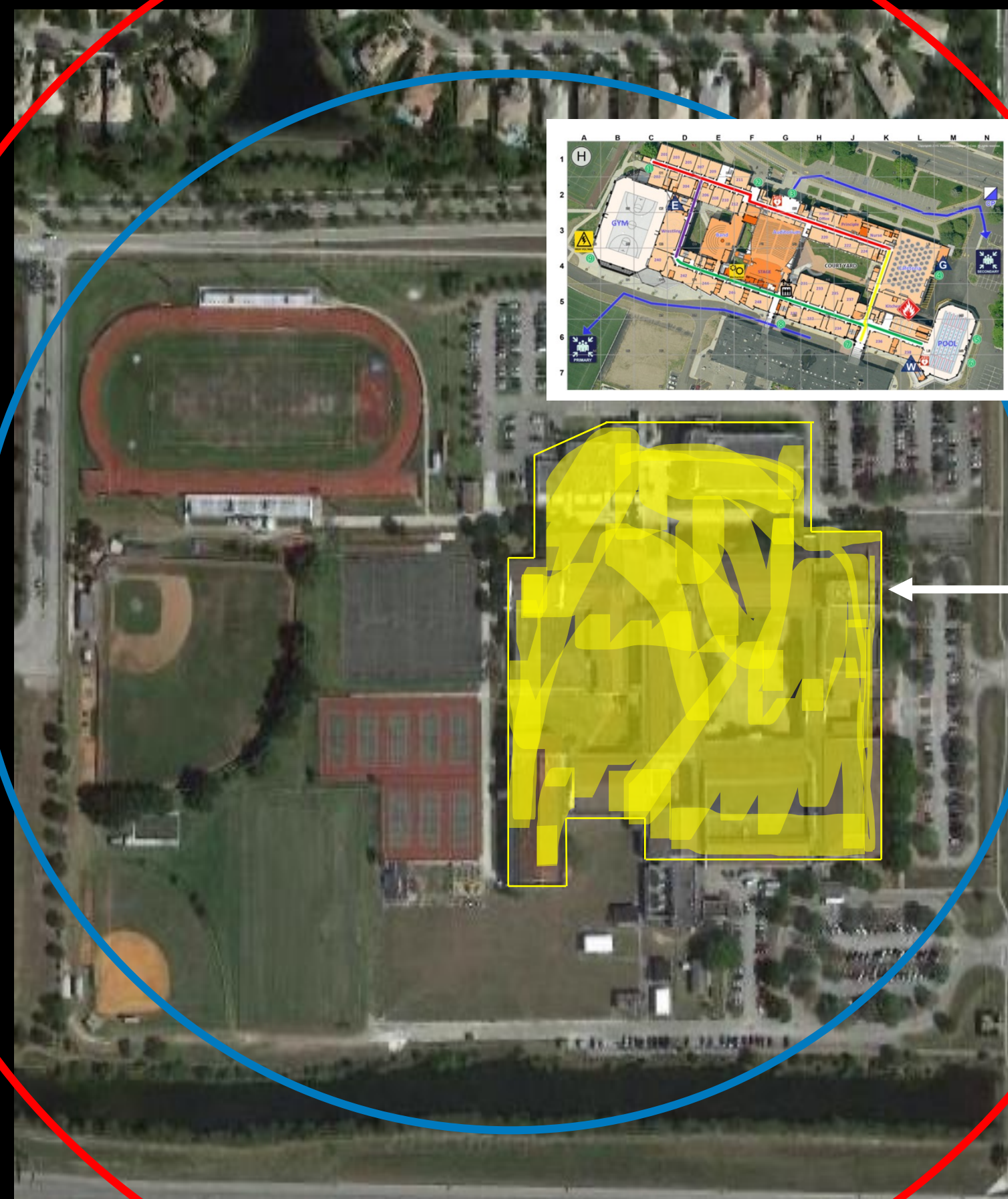


MITIGATE – GRAPHIC SITE MAPPING



Social media monitoring and geofencing

Perimeter cameras and facial/object recognition



Geospatially Accurate Graphic Site Mapping

Weapons Detection

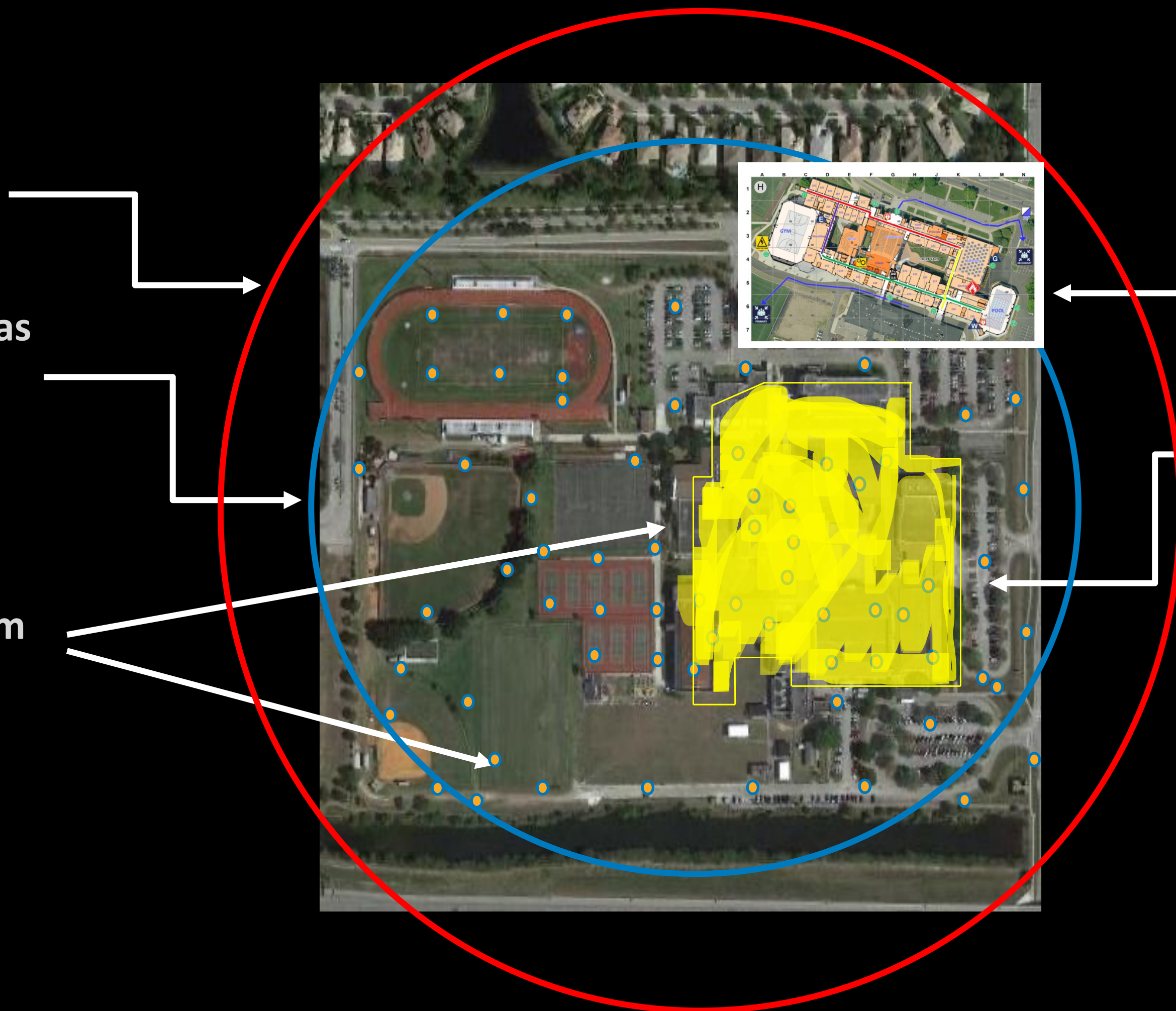




Social media monitoring and geofencing

Perimeter cameras and facial/object recognition

Shot Location System



Geospatially Accurate Graphic Site Mapping

Weapons Detection

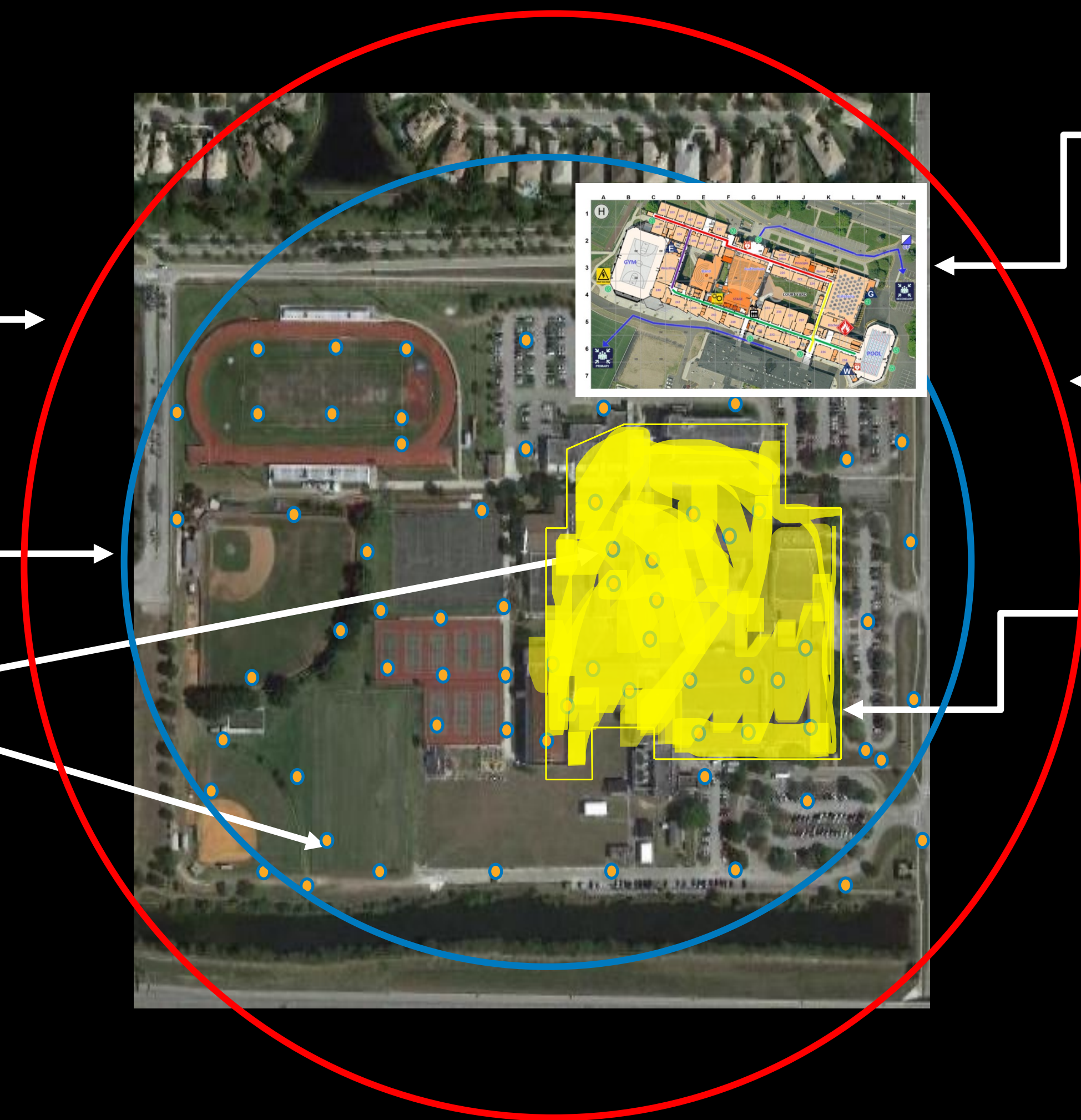




Social media monitoring and geofencing

Perimeter cameras and facial/object recognition

Shot Location System



Geospatially Accurate Graphic Site Mapping

360° Situational Awareness



Weapons Detection





ASSESS

Goldenai's™ School Vulnerability Assessment (SVA) team works with site security, facility operations, and other key stakeholders to assess vulnerabilities and risks. We identify and confirm site-specific critical nodes and equipment required during responses to an emergency. We apply state-of-the-art assessment tools, record comprehensive structural characteristics, rate levels of protection, and prepare cost-benefit improvement options. The entire process is documented in an SVA report.

IDENTIFY

Goldenai's™ Facial Recognition security technology augments security teams to capture images of people and run them against watch-lists and networks in security databases and data feeds from about 2,000 different jurisdictions of verified law enforcement data at the city, county, state, and federal level.

MONITOR

Goldenai's™ and its' partners are leading developers and providers of special technical intelligence services, lawful intercept monitoring and surveillance capabilities, offensive and defensive cyber capabilities, managed security services, intelligence analysis, and rigorous operational training and subject matter expertise support to corporate security, militaries, federal, state, local, and other government agencies.

NOTIFY

Public Safety Officers operating in dangerous situations are faced with a myriad of safety and communication challenges. **Goldenai's™** monitoring and notification system helps prevent these risks. It's a feature rich solution built on a Patented technology platform which has been deployed around the globe with public safety users since 2013. It is a configurable solution built on a responsive framework which supports seamless use across desktops, tablets, and phones. The platform is a single, integrated enterprise solution that provides 360 Degree Awareness to and from your end-point devices (cameras, trackers, phones, audio devices, etc.). It quickly and cost effectively combines information gathering, situational awareness, and secure messaging capabilities into a single enterprise ecosystem.



PREVENT

Goldenai's™ facility security system is a software based threat detection system with unmatched capabilities of traditional metal detectors. It detects both ferrous (iron based) and non-ferrous materials with location-specific photographs of where a threat is detected. The system can be installed several ways, including in existing foundations, covertly or as a portable unit. Its' software updates via the cloud to eliminate expensive replacement costs consistent with large, bulky metal detectors and is considered "smart" because it can scan at different levels of sensitivity. It also allows for fast, precise scanning which reduces operational costs for staffing and frustration among patrons.

MITIGATE

Goldenai's™ shooter localization system is designed to cover areas like schools, office buildings, retail centers, campuses and more. They system is a sensor network system with sensors mounted on walls, ceilings or integrated into outdoor lighting continuously listening for shots. With a patented sensor mesh approach, the system reliably detects and localizes on the source of gunfire ranging from small handguns to high caliber rifles.

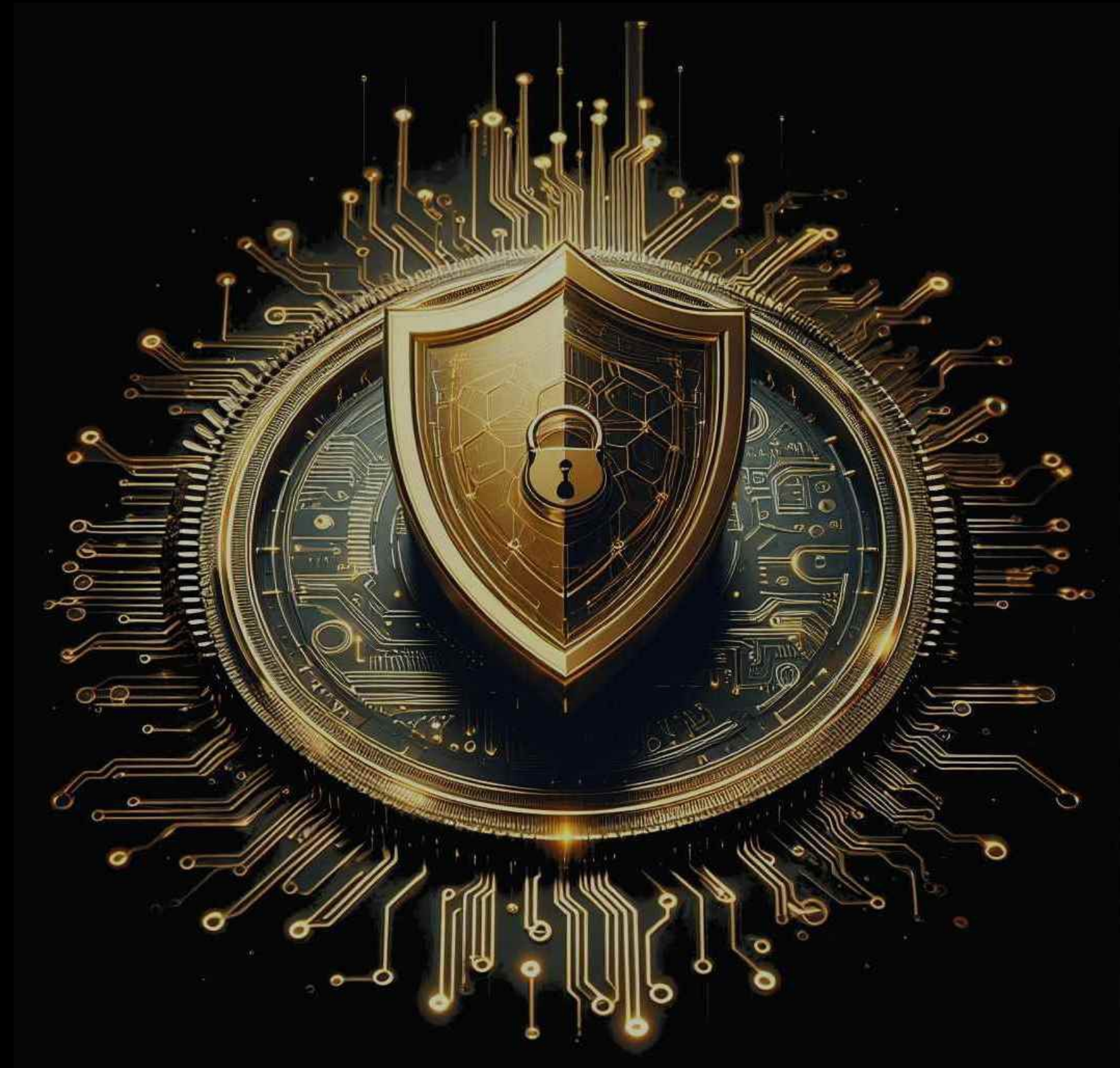
With **Goldenai's™** Graphic Mapping, the critical information contained in an entire emergency plan can be reduced to a single, easy to understand, geospatially accurate graphic. Personnel can plan, collaborate, and respond with a universal understanding of the emergency plan, operational area, and available resources and options. First responders, emergency management professionals, and others integral to a successful and effective response can locate and track each other in real time while having a common geospatial reference. Critical information can be documented, captured, and instantly disseminated to personnel actively engaged in responding and reacting.



CONTACT INFO



BILL McEwen
VP of Sales
GoldenSand Group
www.goldenai.ai
Email: info@goldenai.ai



Steve Sullivan Sr.
Director of Business Dev.
Prevenitas, Inc.
www.prevenitas.com
Cell: +19085813788