



SugarCreek™

Brandworthy Food Solutions™
Since 1966

WHAT A GEM!

KARL G. VOELKEL AWARD)

GEORGE JONES

AGENDA

- SugarCreek & facility background
- Wastewater needs during expansion
- Pretreatment strategy & system design
- Operational lessons & outcomes
- Environmental recognition



WHO WE ARE

Founded in 1966

Over the past decade, SugarCreek has broadened its product lines to include a variety of raw & ready-to-eat products, which are co-packed for various customers.

Utilizing a variety of cooking systems, including microwave, multi-purpose, impingement, infrared ovens and sous vide systems to respond to the ever-changing demands of the food industry.

Continuous improvement and a commitment to meet rigorous standards has allowed SugarCreek to continue to innovate and diversify since it's inception in 1966.

1960s: A vision is Born (1966-1969)
130 associates, \$12M sales

1970s: Laying the Foundation (1975)
320 associates, \$52M sales

1980s: Early steps towards Diversification (1982-1985)

1990s: Passing the Baton (1990-1999)
595 associates, \$58M sales

2000s: Stating Power-Incredible Growth (2000-2006)
864 associates, \$157M sales

2010s: Changing the Game Diversifying the Portfolio (2010-2019)
1,313 associates, \$748M sales

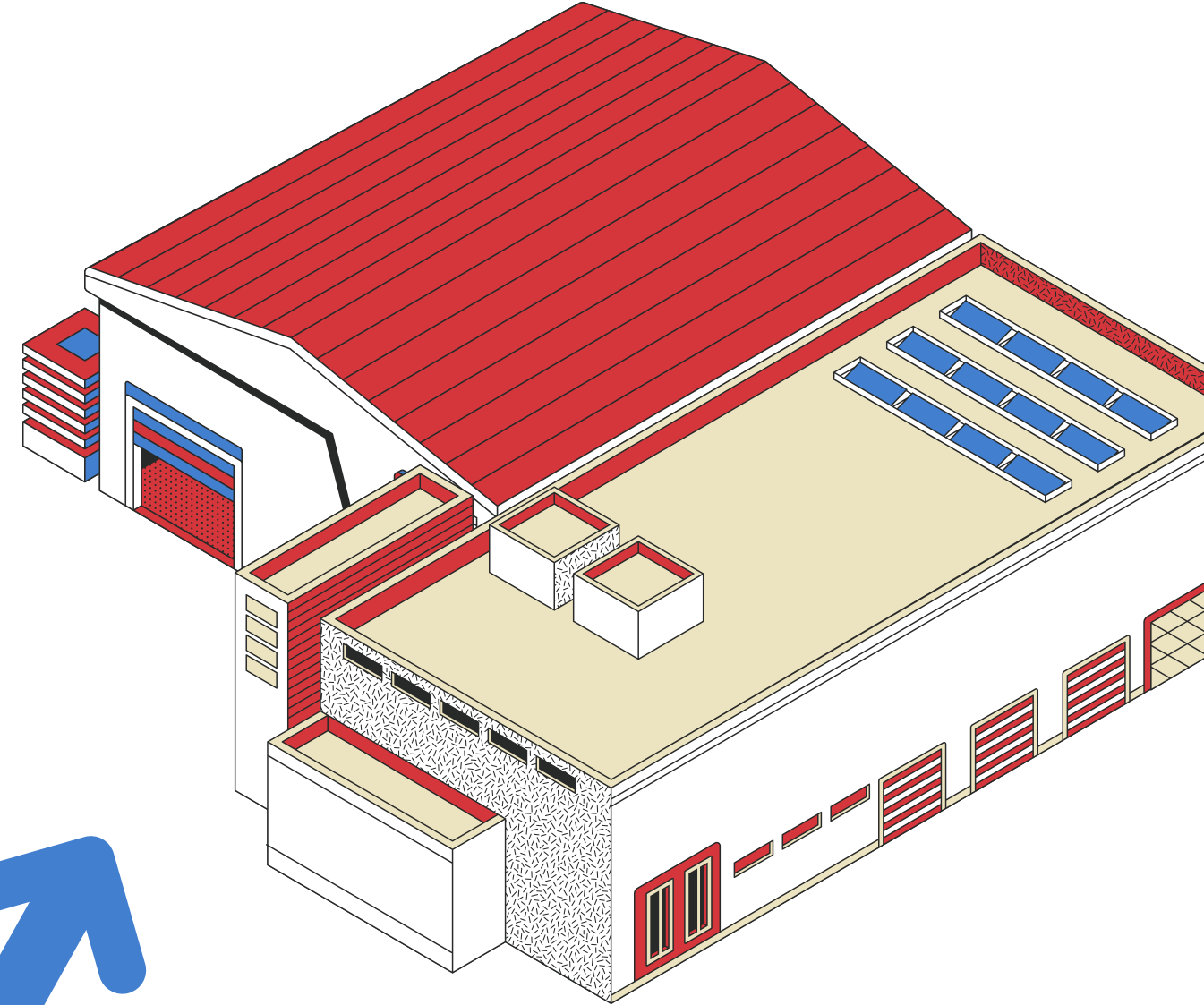
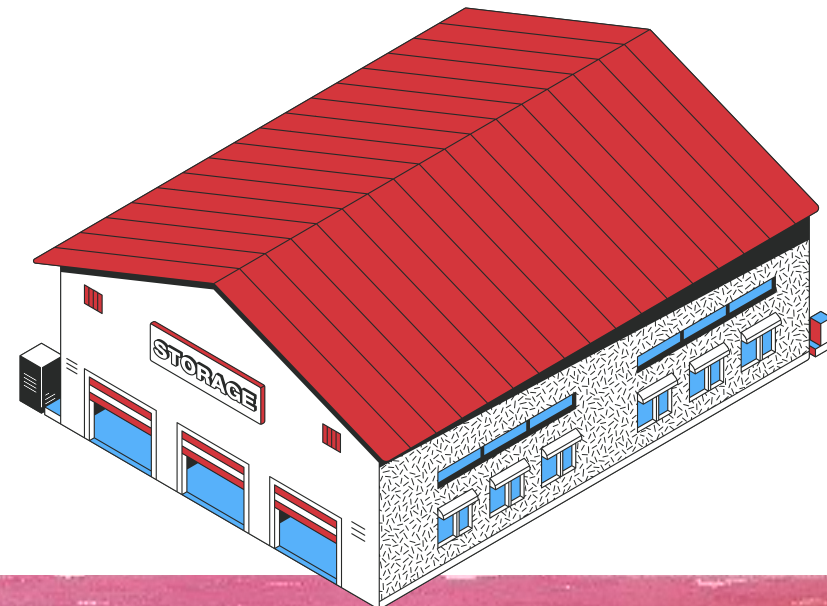
2020s: Vision for the Future (2020-2022)
2,700 associates, \$1B sales

Timeline Milestones:
- The Washington Court House plant begins production (1966)
- Production begins at Bloomington, Illinois Plant (1969)
- Production begins at the Dayton, Ohio plant (1975)
- John G Richardson joins SugarCreek full time (1975)
- Our facility in Frontenac, Kansas opens (1982)
- John S. purchases Wingate Packaging with meat industry colleagues (1983)
- Bacon bits production begins at the Bloomington plant (1985)
- John S. sells SugarCreek to John G. before retiring (1990)
- First microwave line installed, allowing fully cooked bacon production (1995)
- Food safety lab opened and certified by USDA (1999)
- Cincinnati plant opens (2000)
- Michael J. Richardson joins the company (2002)
- Production begins at the newly renovated Dayton, Ohio facility (2006)
- Jennifer (Richardson) Hutchinson joins the company (2010)
- Corporate brand renewal (2010)
- Brandworthy plant opens in West Chester, Ohio (2013)
- New plant opens in Cambridge City, Indiana (2014)
- SugarCreek celebrates 50 years (2016)
- John G wins entrepreneur of the year (2019)
- Investment in McVie technology (2020)
- Blue Ash Corporate HQ opens (2021)
- John G wins prestigious Entrepreneur Award (2021)
- The company hits \$1B in sales (2022)

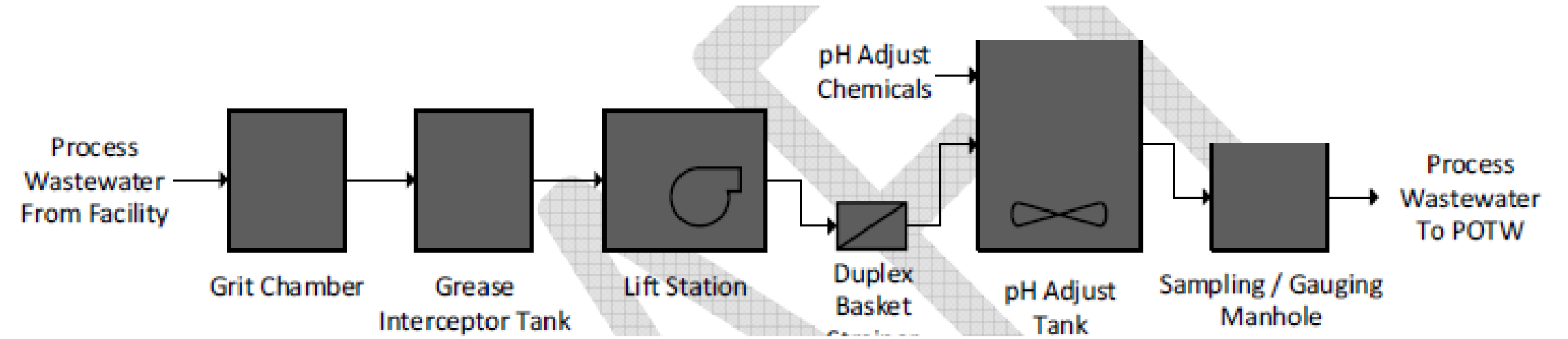


BRANDWORTHY – FAIRFIELD

Facility was purchased in 2014
From 2014 to 2020 functioned primarily as a packaging and storage warehouse.
In 2021 began the process of renovating to increase capacity for additional cooking capabilities.
Additional cooking equipment, processes and products meant increased water use and loading.



WHERE WE STARTED



- pH adjustment only
- Designed for early operations- packaging
- Compliance primary focus- solids removal, pH and flow

Table 1: BWB Existing Wastewater Characteristics

Parameter	Units	Average Daily	Maximum Daily	Minimum Daily
Flow ⁴	gpd	14,500	20,000	8,500
TSS	mg/L	121	196	68
COD	mg/L	1,174	1,750	578
O&G (FOG)	mg/L	77.7	160	12.5
Phosphorus	mg/L	12.5	31.8	5.4
TDS	mg/L	822	1,100	638



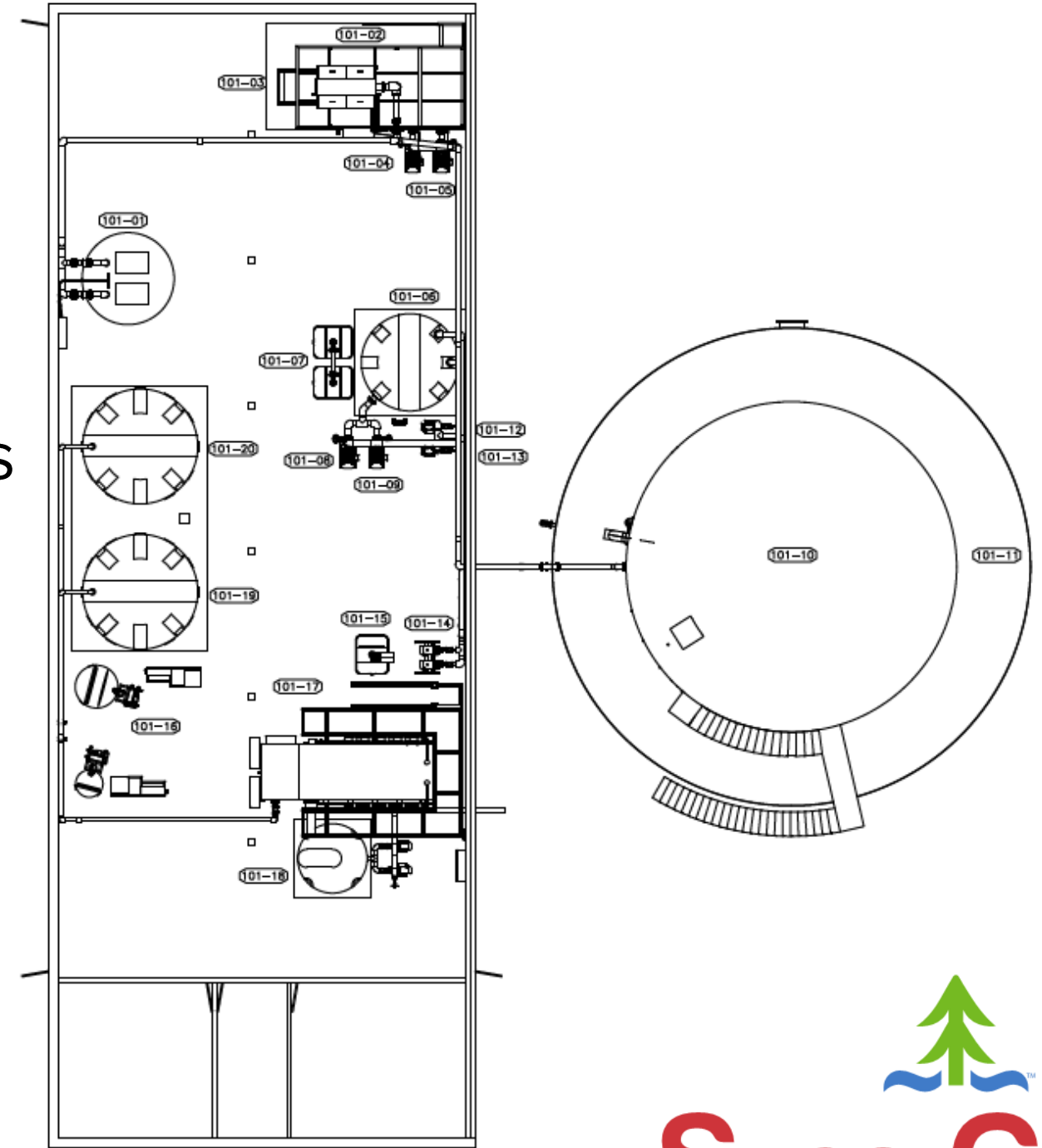
WHY UPGRADE?

Facility expansion and Increased production

- Shift from packaging → cooking
- New equipment types
- Higher water use from cooking and sanitation processes

Needed reliability & consistency for fluctuating wastewater characteristics

- Different wastewater profile, not just more volume



DESIGNING A NEW SYSTEM

Growth & Regulatory Requirements

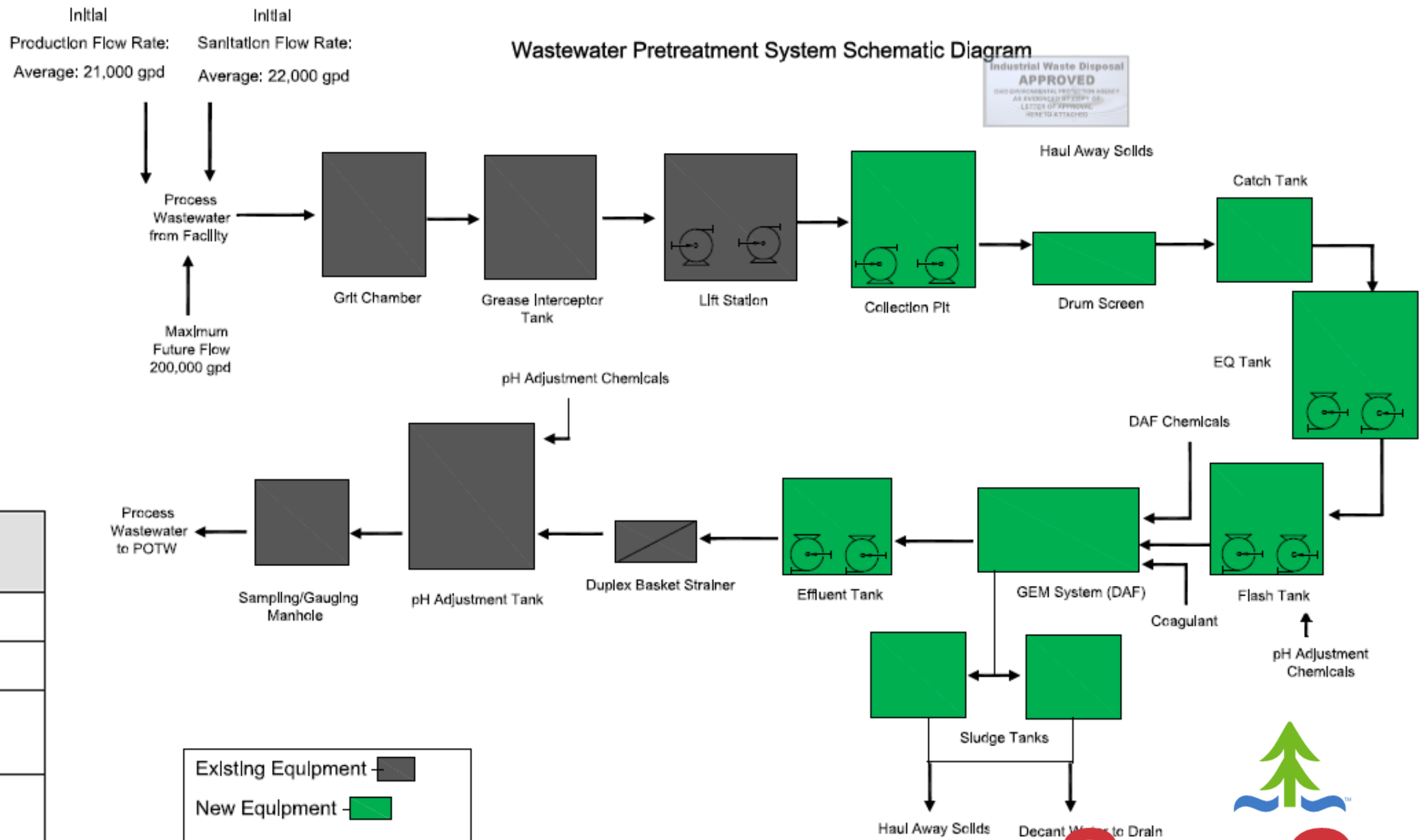
Old max daily flow: 20,000 gpd

New permitted flow: 200,000 gpd

Variable flows & loading

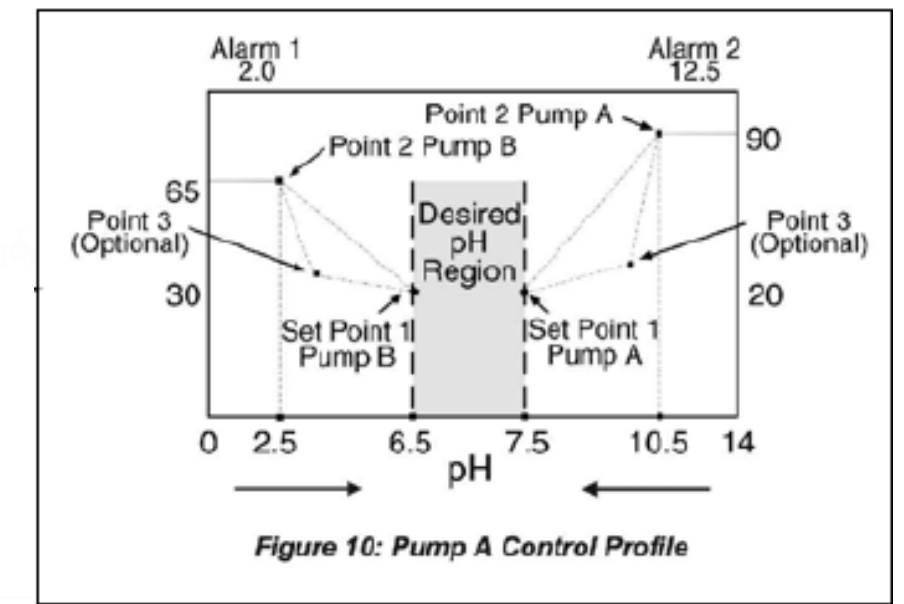
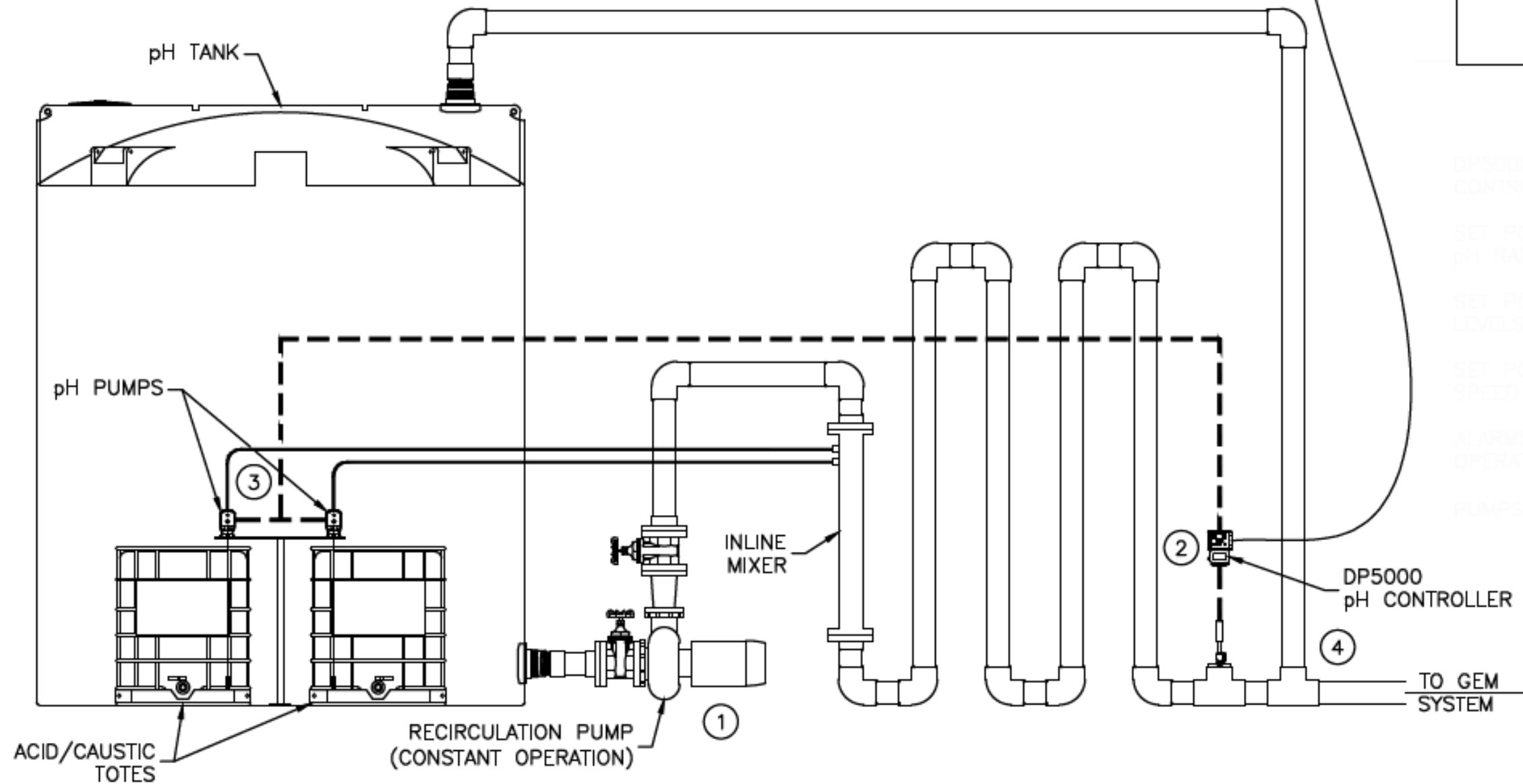
BCWS SURCHARGE RATES

Industrial Extra-Strength Surcharge Structure for BCWS						
	BOD**	COD**	TSS**	Ammonia	O&G	TP
Limits (mg/l)	> 200	> 500	> 200	> 20	> 50	> 15
Surcharge (\$/lb) Effective: June 1, 2022	0.27	0.12	0.31	1.55	0.78	2.00
Surcharge (\$/lb) Effective: January 1, 2023	0.28	0.13	0.32	1.59	0.81	2.06



CONTINUOUS ADJUSTMENT

D-LOOP Integrated pH control.



SAMPLE pH CONTROLLER SETUP

DP5000 pH CONTROLLER
 CONTROL PUMP C
 SET POINT 1 ON pH RANGE
 SET POINT 2 ON LEVELS
 SET POINT 3 ALL SPEED OPERATION
 ALARMS CAN BE OPERATORS
 PUMPS WILL SHUT

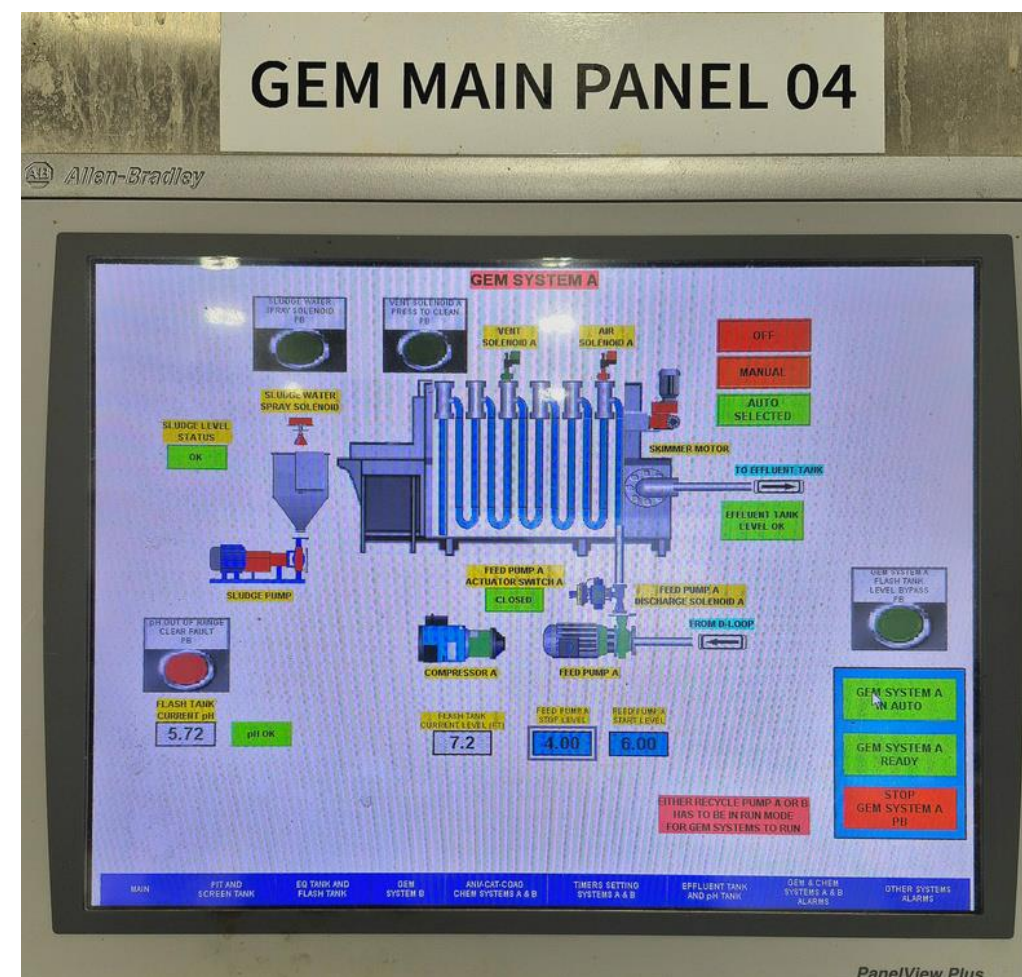
GEM SYSTEM

Gas Energy Mixing (GEM)

Advanced flotation & flocculation

Similar to DAF, with enhanced mixing

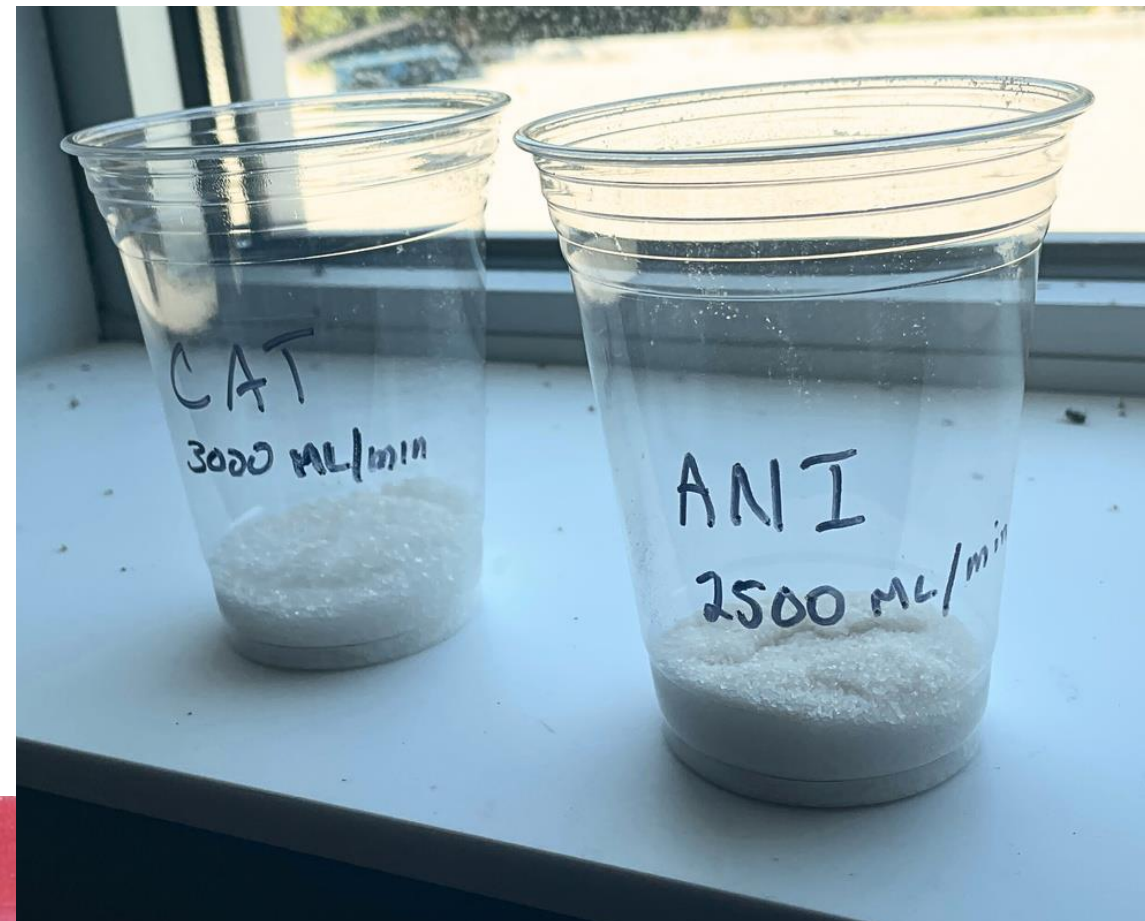
Designed for industrial wastewater



FINISHED PRODUCT



CHANGES



CHANGES




SugarCreek[™]
Brandworthy Food Solutions[™]
Since 1966

THANK YOU!

Past KGV industry award winners:

- 2025 – thyssenkrupp BILSTEIN of America, Inc., Hamilton, OH
- 2024 – Future Finishes, Hamilton, OH
- 2023 – Kao Corporation, Cincinnati
- 2022 – Empire Packing, Mason
- 2020 – Pilot Chemical, Middletown
- 2019 – Electropolish, Hunter Facility, Dayton
- 2018 – Hohman Plating, Dayton
- 2017 – Standard Aero, Cincinnati
- 2016 – Pacific Manufacturing of Ohio, Fairfield
- 2014 – Techmetals, Inc., Dayton
- 2013 – Wassau Paper, Middletown
- 2012 – Advance Pierre Foods, Cincinnati
- 2011 – Summit Finishing Technologies, Moraine
- 2010 – Hohman Plating & Mfg., Inc., Dayton
- 2009 – Sugar Creek Packing Co., Dayton



QUESTIONS?

