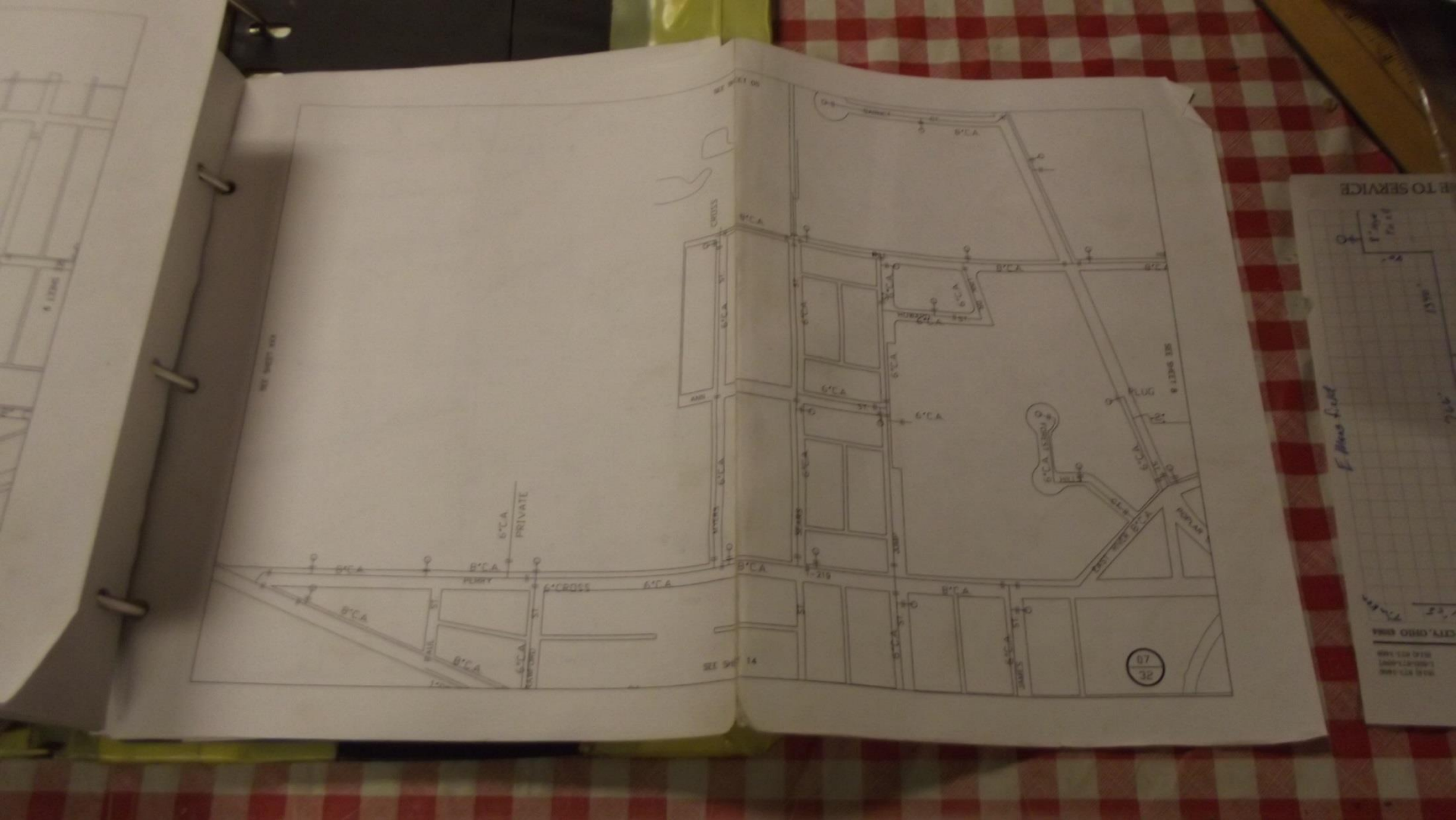


DE  
3P

SEE SHEET 1001

SEE SHEET





SEE SHEET 14

SEE SHEET 14

57  
32

TO SERVICE

*Handwritten:* E. Area List

TO SERVICE

TO SERVICE

TO SERVICE





1953 - 1960

CARWOOD - Baker 1  
 Mansfield - N Sandusky - RR - Mary 2  
 Southern - Short - Ozman 3  
 Plants way - River ST (old) 4  
 Wallace - Winchester 5  
 S. Sandusky - Skill 6  
 Mansfield - Poplar - Mary 7  
 Nevada Rd - city limits 8  
 Perry - Sears - Ann 9  
 Poplar - Euclid 10  
 Southern - Spring 11  
 Maries Rd. - Allen - Southern (old) 12  
 N Walnut - Perry ST - Mary 13  
 Rogers ST - Lucas 14  
 Hopley AVE - Washington ST - Jefferson 15  
 Whitsteak - Southern - Callen 16

Ridge AVE - Wise 17  
 Woodrow - F Irving 18  
 Blvd AVE - Menard ST (old) 19  
 Cleland - High ST (old) 20  
 Measurements 21  
 Measurements 22  
 Measurements 23  
 Wallace - East 24  
 Measurements - Allen AVE 25  
 Plymouth - High - Sherman 26  
 Plymouth - Cornfield 27  
 Laving - Victoria - Mary ann 28  
 ' ' ' ' 29  
 Nevada Rd. - W. Mansfield 30  
 Reid ST - Inez 31  
 E. Mansfield - Inez 32





JOHN KACSITS  
District Manager



METER SETTING EQUIPMENT - METER TESTING EQUIPMENT  
BRASS VALVES - BRASS FITTINGS - PIPE PRODUCTS

- A TRADITION OF QUALITY SINCE 1898 -

1953 - 1960

CAKWOOD - Kaler	1	Ridge AVE - Wise
Mansfield - N. Sandusky - RR. - Many	2	WOODROW - E. Irving
Southern - Short - Osman	3	Bland AVE - Monnett
Plants way - River ST (old)	4	Cleland - High ST
Wallace - Winchester	5	Measurements
S. Sandusky - Shell	6	Measurements
Mansfield - Poplar - Many	7	Measurements
Nevada Rd - city limits	8	Wallace - East
Perry - Sears - Ann	9	Measurements -



JOHN KA  
District Man

METER SETTING EQUIPMENT - METER  
BRASS VALVES - BRASS FITTING

- A TRADITION OF QUALITY





**FORD**

JOHN KACSITS  
District Manager

METER SETTING EQUIPMENT - METER TESTING EQUIPMENT  
BRASS VALVES - BRASS FITTINGS - PIPE PRODUCTS

- A TRADITION OF QUALITY SINCE 1898 -

1953 - 1960



**FORD**

JOHN KACSITS  
District Manager

METER SETTING EQUIPMENT - METER  
BRASS VALVES - BRASS FITTINGS

- A TRADITION OF QUALITY

CAKWOOD - Kaler	1	Ridge AVE - Wise
Mansfield - N Sandusky - RR. - Many	2	WOODROW - E. Irving
Southern - Short - Osman	3	Bland AVE - Monnett S
Plants way - River ST (old)	4	Cleland - High ST
Wallace - Winchester	5	Measurements
S. Sandusky - Shell	6	Measurements
Mansfield - Poplar - Many	7	Measurements
Nevada Rd - city limits	8	Wallace - East
Perry - Sears - Ann	9	Measurements - A
Poplar - Euclid	10	Plymouth - High



53-1960

- Lake	1	Ridge Ave - Wise	17
WenduskY - RR - Mary	2	Wood Row - Irving	18
Orman	3	Blond Ave - Menard ST (old)	19
ST (old)	4	Cleland - High ST (old)	20
Agree	5	Measurements	21
WenduskY - Shell	6	Measurements	22
WenduskY - Poplar - Mary	7	Measurements	23
limits	8	Wallace - East	24
	9	Measurements - Allen Ave	25
Southern - Spring	10	Plymouth - High - Sherman	26
Marion Rd. - Allen - Southern (old)	11	Plymouth - Court - old	27
N Walnut - Perry ST - Mary	12	Living - Victoria - Mary Ann	28
Rogers ST - Lucas	13	" " "	29
Hopley Ave - Washington ST - Jefferson	14	Nevada Rd. - W. Mansfield	30
Whitsteak - Southern - Callen	15	Reid ST - Inez	31
	16	E. Mansfield - Inez	32





WEDNESDAY - MAY 26

10  
11  
12  
1  
2  
3  
4  
5

THURSDAY - MAY 27

9  
10  
11  
12  
1  
2  
3

FRIDAY - MAY 28

35

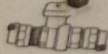
9  
10  
11  
12  
1  
2  
3  
4  
5

SATURDAY - MAY 29

9  
10  
11  
12  
1  
2  
3

~~measure of ...~~  
~~...~~  
11 May ...  
12 ... ✓  
1 6" ...  
2 15° east of ...  
3 2° north to ...



**FORD**JOHN KACSITS  
District ManagerMETER SETTING EQUIPMENT - METER TESTING EQUIPMENT  
BRASS VALVES - BRASS FITTINGS - PIPE PRODUCTS

- A TRADITION OF QUALITY SINCE 1898 -

1960-1964

N. Walnut - E. Macy	1
Forest Hill CT.	3
Deal AVE - Marion Rd	5
Elm ST - Plymouth ST	7
High ST - Plymouth ST	9
S. Sandusky - Crescent CT	11
E. Warren ST - Highland	13
E. Mansfield - Stephenson Ind.	15
Lucas ST - Prospect ST	17
Prospect ST - E. Lucas	19
Southern AVE - Shewood - Robin hood	21
E. Warren ST - Schuckler	23
E. Warren ST - Highland	25
Lindwood - Fairview	27
E. Rensselaer	29
Myers ST	31

THE FORD METER BOX COMPANY, INC.

P.O. Box 443, Wabash, Indiana 46992-0443  
Phone: 219-563-3171 Fax: 800-826-3487**FORD**JOHN KACSITS  
District ManagerMETER SETTING EQUIPMENT - METER TESTING EQUIPMENT  
BRASS VALVES - BRASS FITTINGS - PIPE PRODUCTS

- A TRADITION OF QUALITY SINCE 1898 -

Maple ST - Lawn AVE	33
Loring - Southern AVE	35
Meyers ST	37
Victoria	39
Loring - Martha - Fairview	41
Lawn - Emerson - Dudley	43
E. Rensselaer at R.R. crossing	45
E. Rensselaer - Wiley	47
E. Charles - Walnut - Lane - East	49
E. Charles - East - Iron - Wiley	51
Wiley - Charles - Warren - Ren	53
E. Renn - Wiley	55
Whetstone ST - Reid - Inez	57
Hopley - Washington	59
Reid ST - Fisher ST	61
Penn AVE - Sommer	63

THE FORD METER BOX COMPANY, INC.

P.O. Box 443, Wabash, Indiana 46992-0443  
Phone: 219-563-3171 Fax: 800-826-3487

32



JOHN KACSITS  
District Manager



METER SETTING EQUIPMENT - METER TESTING EQUIPMENT  
BRASS VALVES - BRASS FITTINGS - PIPE PRODUCTS

METER SETTING EQUIPMENT  
BRASS VALVES - BRASS FITTINGS - PIPE PRODUCTS

- A TRADITION OF QUALITY SINCE 1898 -

- A TRADITION OF QUALITY SINCE 1898 -

1960-1964

N. Walnut - E. Mary	1	Maple ST - Lawn
Forest Hill CT.	3	Loring - Southern
Beal AVE - Marion Rd	5	Meyers ST
Elm ST - Plymouth ST	7	Victoria
High ST - Plymouth ST	9	Loring - Mart
S. Sandusky - Crescent CT	11	Lawn - Emerso
E. Warren ST - Highland	13	E. Rensselaer
E. Mansfield - Stephenson Ind.	15	E. Rensselaer
Lucas ST - Prospect ST	17	E. Charles -



MON. 6" Valve Dudley & Dunn  
 Being north 35° 6" West of Hyd.  
 JUNE 10 7' 6" North ✓

6" Valve Dudley & Dunn  
 Being north of up ✓ 184A

TUES. 6" Valve Dudley & Dunn ✓  
 JUNE 11 Being south 5' 6" South of Hyd.

6" Tee flanged headed south, south  
 Dudley & Dunn is 133 ft south of Hyd. 184A

WED. 6" Valve Dudley & Woodrow ✓  
 JUNE 12 Valve going west - 3' North of Hyd.  
 2' 6" East

end of Pipe on Dudley & Woodrow  
 is 10' East of Valve. 184A

THURS. ~~6" Valve Dudley & Woodrow~~  
 JUNE 13 ~~Being north 17' 6" South of Menhole~~

6" Valve going west 17' 8" South of Center  
 Woodrow & Emerson, of menhole  
 3' 4" West. 184A

FRI. Emerson & Woodrow End of 6" G.A. ✓  
 JUNE 14 pipe is 20' East of Valve 184A

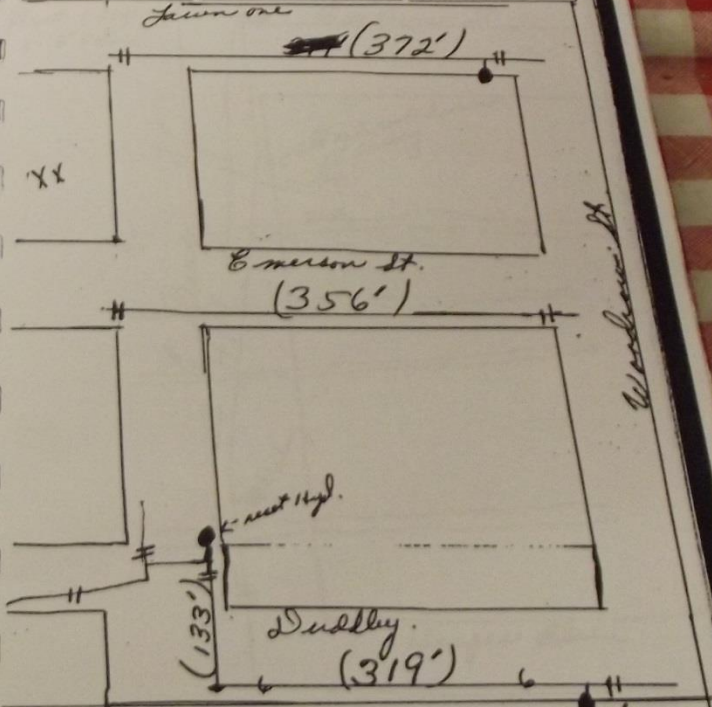
Lawn & Dunn 6" Valve going East  
 2' 10" East of Hyd. 2' 6" North. ✓ 184A

SAT. Lawn & Woodrow 6" Valve going west.  
 JUNE 15 2' 9" East of Hyd.  
 2' 8" North

SUN. Lawn & Woodrow end of 6" G.A. ✓  
 JUNE 16 is 5' East of Valve 184B

Install By Contractor Mason 43

1957	MAY	1957	1957	JUNE	1957	1957	JULY	1957
S	M	T	W	T	F	S	S	S
1	2	3	4	5	6	7	8	9
10	11	12	13	14	15	16	17	18
19	20	21	22	23	24	25	26	27
28	29	30	31	1	2	3	4	5



**SOLVAY**  
 SODA ASH • CHLORINE • CAUSTIC SODA • CALCIUM CHLORIDE  
 SPECIAL ALKALIES for - Dairies, Laundries, Tanners,  
 Bottlers, Compounds, Textiles, Breweries, Cannery,  
 ACE ALKALI • ANCHOR ALKALI • SNOWFLAKE CRYSTALS  
 NITROX • SUPERSHEEN • VINYL CHLORIDE • ALUMINUM CHLORIDE

SODIUM NITRITE • CAUSTIC POTASH • PARA-DICHLOROBENZENE  
 POTASSIUM CARBONATE • MONOCHLOROBENZENE • CARBON TETRACHLORIDE  
 METHYLENE CHLORIDE • CHLOROFORM • METHYL CHLORIDE • HYDROGEN PEROXIDE  
 AMMONIUM BICARBONATE • AMMONIUM CHLORIDE • ORTHO-DICHLOROBENZENE



2'6" East  
end of Pipe on Dudley + Woodrow  
is 10" East of Valve. 184A

THURS. ~~6" Valve going East~~  
JUNE 13 ~~Emerson + Dunn 17'6" South of Menhole~~  
~~in Woodrow + Emerson 3'4" West.~~

6" Valve going west } 17'8" South of Center  
Woodrow + Emerson } of menhole  
3'4" West. 184A

FRI. Emerson + Woodrow End of 6" C.A  
JUNE 14 pipe is 20" East of Valve ✓ 184A

Lawn + Dunn 6" Valve going East  
2'10" East of Hyd. 2'6" North. ✓ 184A

SAT. Lawn + Woodrow 6" Valve going West.  
JUNE 15 2'9" East of Hyd.  
2'8" North

SUN. Lawn + Woodrow end of 6" C.A  
JUNE 16



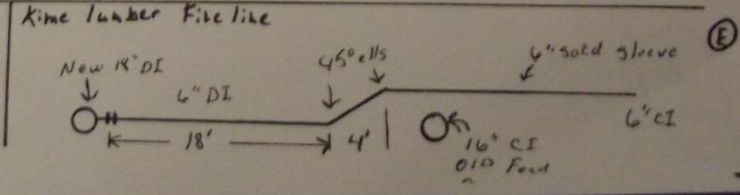
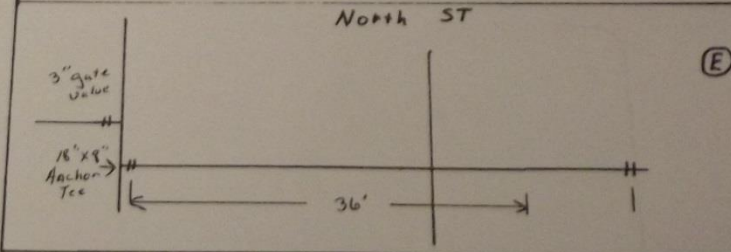
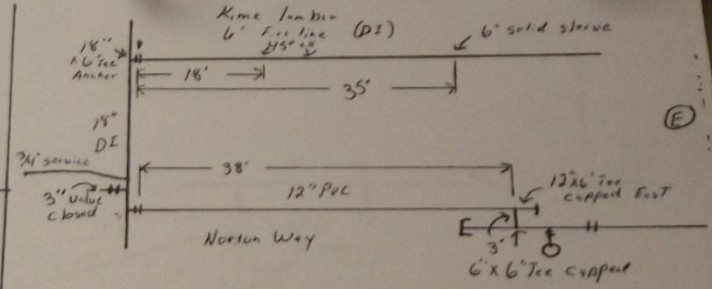
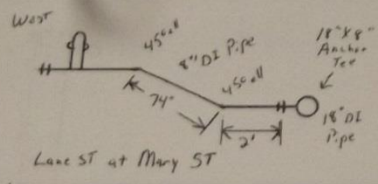
1998 -

1. N Sandusky - Tie in Street
2. N Sandusky - Water line
3. Morgan Manor - Whitstone ST
4. Reserve at Whitstone
5. N Sandusky Ave - RR Spur - Leak
6. Gay ST - 6" replacement
7. Rensselaer ST - RR Project
8. Warren ST - RR Project
9. Fisher + Reid ST - Service line
10. Hopley Ave. - Walnut to Rogers ST
11. Pump house
12. Failer to Fair ST
13. Gamiller Park
14. Lane ST - RR. Dore - Volmeth Tie in
15. Lane ST - River Crossing
16. Hopley + OAKWOOD Tie In
17. Hopley - East Lucas Tie In
18. Lane ST - Water ST - Water Plant Tie In
19. Quivers ST
20. Lane ST - Blicke ST
21. Whitstone - Baul Ave extension
22. Lane ST Tie Ins
23. I. B. Techs - Fire line

1998 -

1. N. Sandusky - Tie in Sheet
2. N. Sandusky - water line
3. Morgan Manor - Whetstone ST
4. Reserve at Whetstone
5. N. Sandusky AVE - R.R.
6. Gay St. - 6" replacement





6' x 6" Tee capped East

total

(E)

TUES.  
OCT. 29

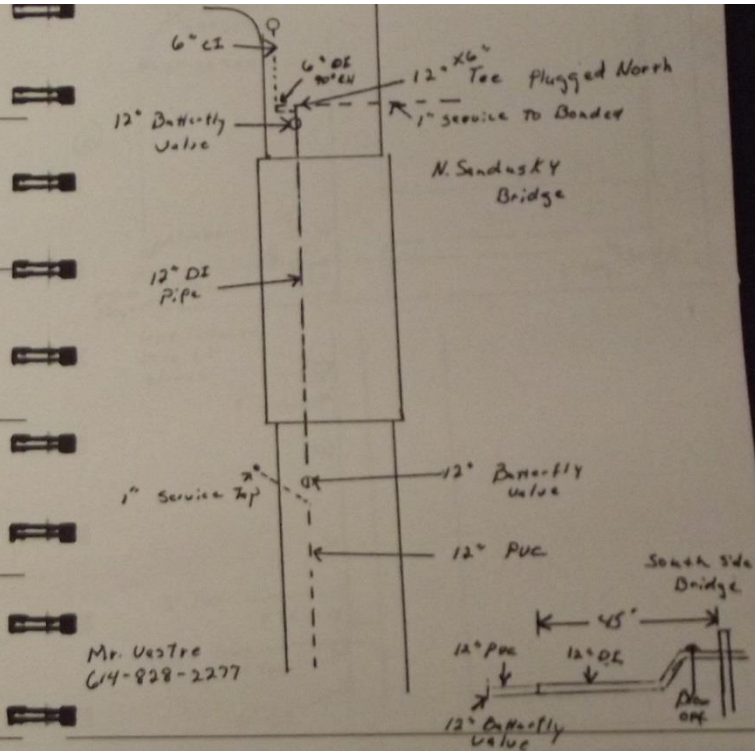
WED.  
OCT. 30

THURS.  
OCT. 31

FRI.  
NOV. 1

SAT.  
NOV. 2

SUN.  
NOV. 3



SODA ASH • CHLORINE • CAUSTIC SODA • CALCIUM CHLORIDE  
SPECIAL ALKALIES for—Dairies, Laundries, Tanners, Bottlers, Com-  
pounders, Textiles, Breweries, Cannery • ACE ALKALI • ANCHOR  
ALKALI • SNOWFLAKE CRYSTALS • NITROX • SODIUM  
NITRITE • VINYL CHLORIDE • ALUMINUM CHLORIDE

CAUSTIC POTASH • PARA-DICHLOROBENZENE • MUTUAL CHROMIUM CHEMICALS  
POTASSIUM CARBONATE • MONOCHLOROBENZENE • CARBON TETRACHLORIDE  
METHYLENE CHLORIDE • CHLOROFORM • METHYL CHLORIDE • HYDROPEROXIDE  
AMMONIUM BICARBONATE • AMMONIUM CHLORIDE • ORTHO-DICHLOROBENZENE













SERVICE LOCATIONS OR MEASUREMENTS TO ADD TO COMPUTER FILES

ADDR 2251 Kerstetter Rd.  
TYPE OF MAIN PVC SIZE 8"  
MEASUREMENTS 30' of far East Side  
16' of curb

OTHER ADDRESS'S THIS APPLIES TO \_\_\_\_\_

MISC INFORMATION

Master Shut off for 2251<sup>1/2</sup> 2273 Kerstetter 31'6" of 1" copper  
2'6" of curb 24' of SE corner of 2283 Kerstetter

DONE BY \_\_\_\_\_ DATE \_\_\_\_\_

APPROVED \_\_\_\_\_ FILES UPDATED ON \_\_\_\_\_ BY \_\_\_\_\_

SERVICE LOCATIONS OR MEASUREMENTS TO ADD TO COMPUTER FILES

ADDR 2273 Kerstetter Rd  
TYPE OF MAIN PVC SIZE 8"  
MEASUREMENTS 12 of curb  
1'6" of NE corner

OTHER ADDRESS'S THIS APPLIES TO \_\_\_\_\_

MISC INFORMATION

Master Shut off for 2251<sup>1/2</sup> 2273 Kerstetter 31'6" of 1" copper  
2'6" of curb 24' of SE corner of 2283 Kerstetter

DONE BY \_\_\_\_\_ DATE \_\_\_\_\_

APPROVED \_\_\_\_\_ FILES UPDATED ON \_\_\_\_\_ BY \_\_\_\_\_



SERVICE LOCATIONS OR MEASUREMENTS TO ADD TO COMPUTER FILES

ADDR 2251 Kerstetter Rd.

TYPE OF MAIN PVC SIZE 8"

MEASUREMENTS

30' of far East Side

16' of curb

OTHER ADDRESS'S THIS APPLIES TO

MISC INFORMATION

Master Shut off for 2251 & 2273 Kerstetter 31'6" of 1" copper  
2'6" of curb 24' of SE corner of 2283 Kerstetter

DONE BY \_\_\_\_\_ DATE \_\_\_\_\_

APPROVED \_\_\_\_\_ FILES UPDATED ON \_\_\_\_\_ BY \_\_\_\_\_

AE Builds and  
Shut off locations

3" pvc Gas Main

Bell split Sept 2014  
new photo

Bell

10' E  
Main

3/4

3/4

1' copper

old Taps for 158 & 156 Plymouth

S  
E  
W  
N



Bell

10' C.I.

Main

$\frac{3}{4}$ "

$\frac{3}{4}$ "

1' copper

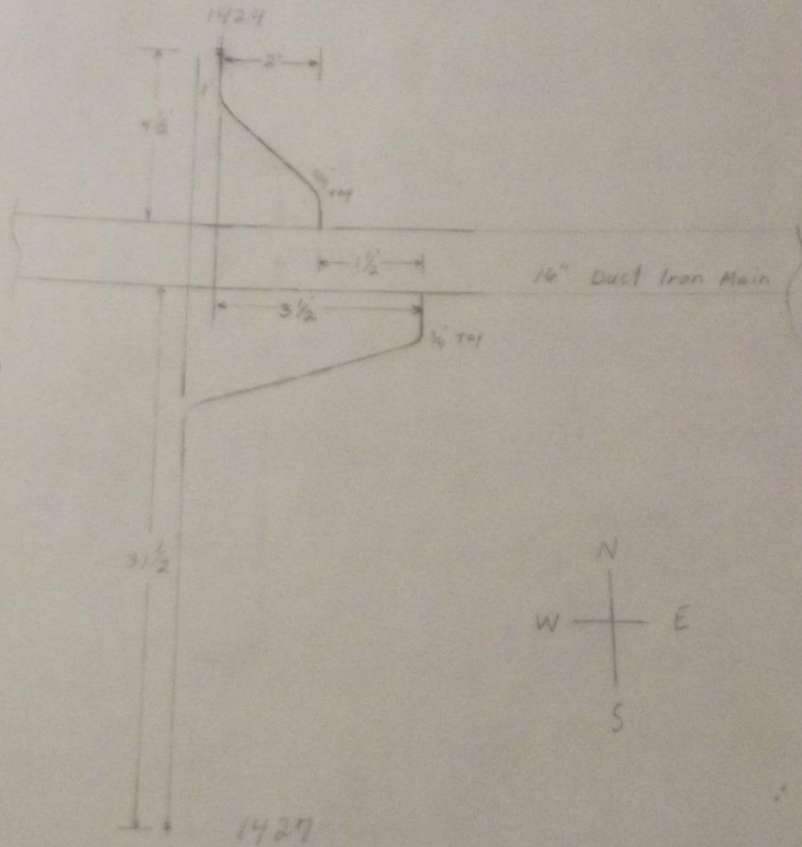
old Taps for 158 & 156 Plymouth



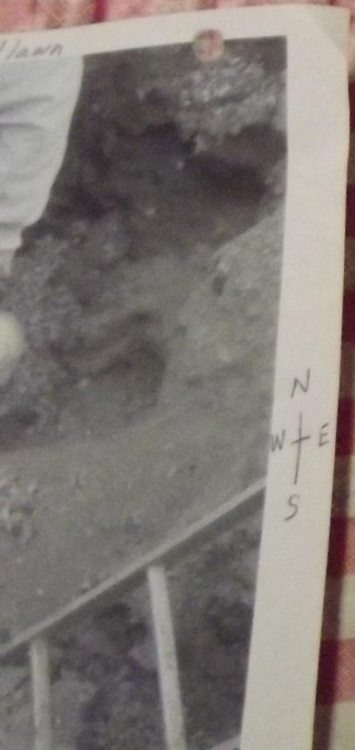
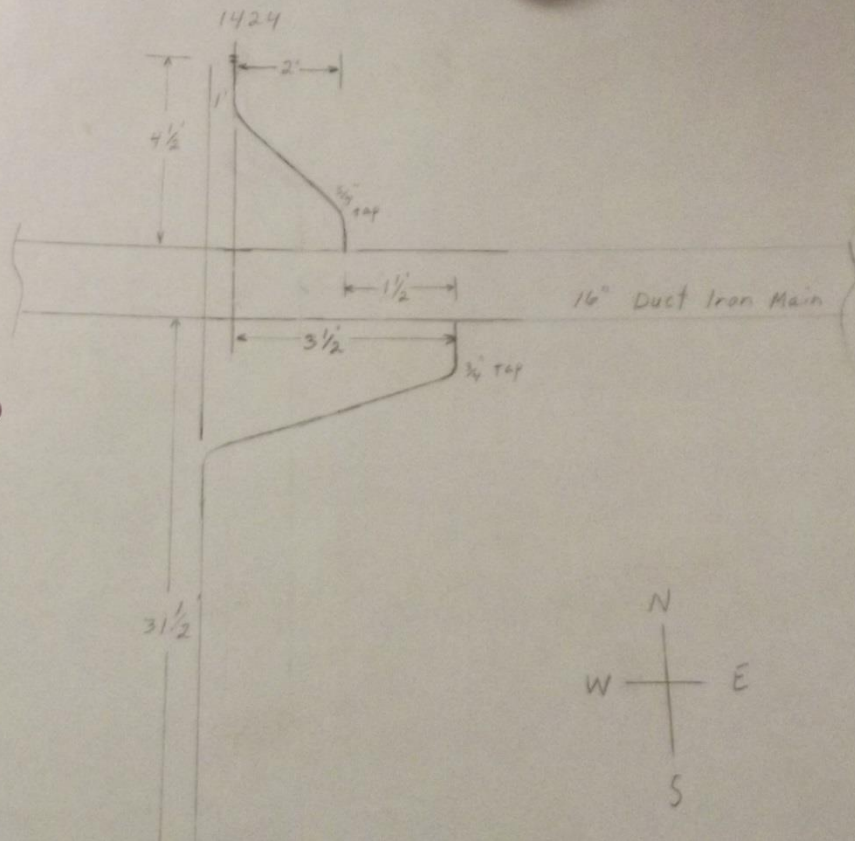


16" main on Woodlawn

Taps & Services for 1424 & 1427 Woodlawn



16" main on Woodlawn  
Taps & Services for 1424 & 1427 Woodlawn

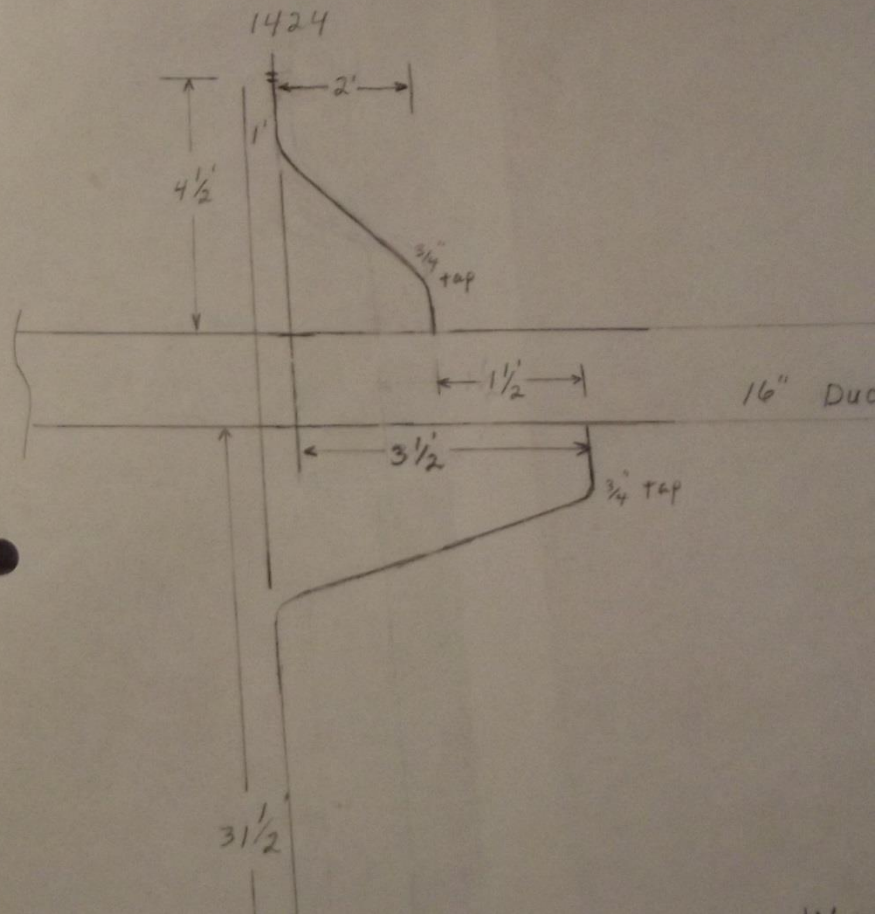


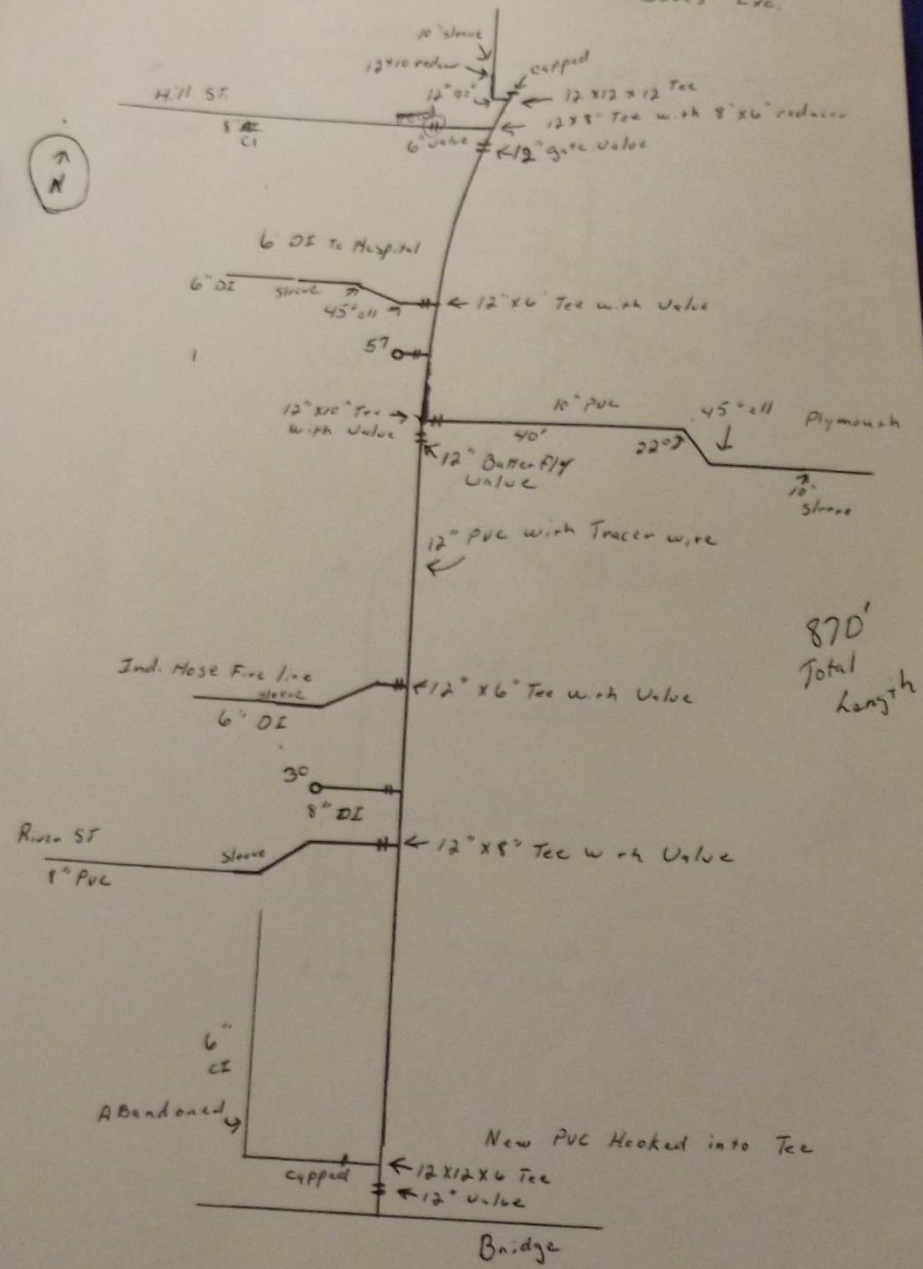




16" main on Wood lawn

Taps & Services for 1424 & 1427 Wood lawn

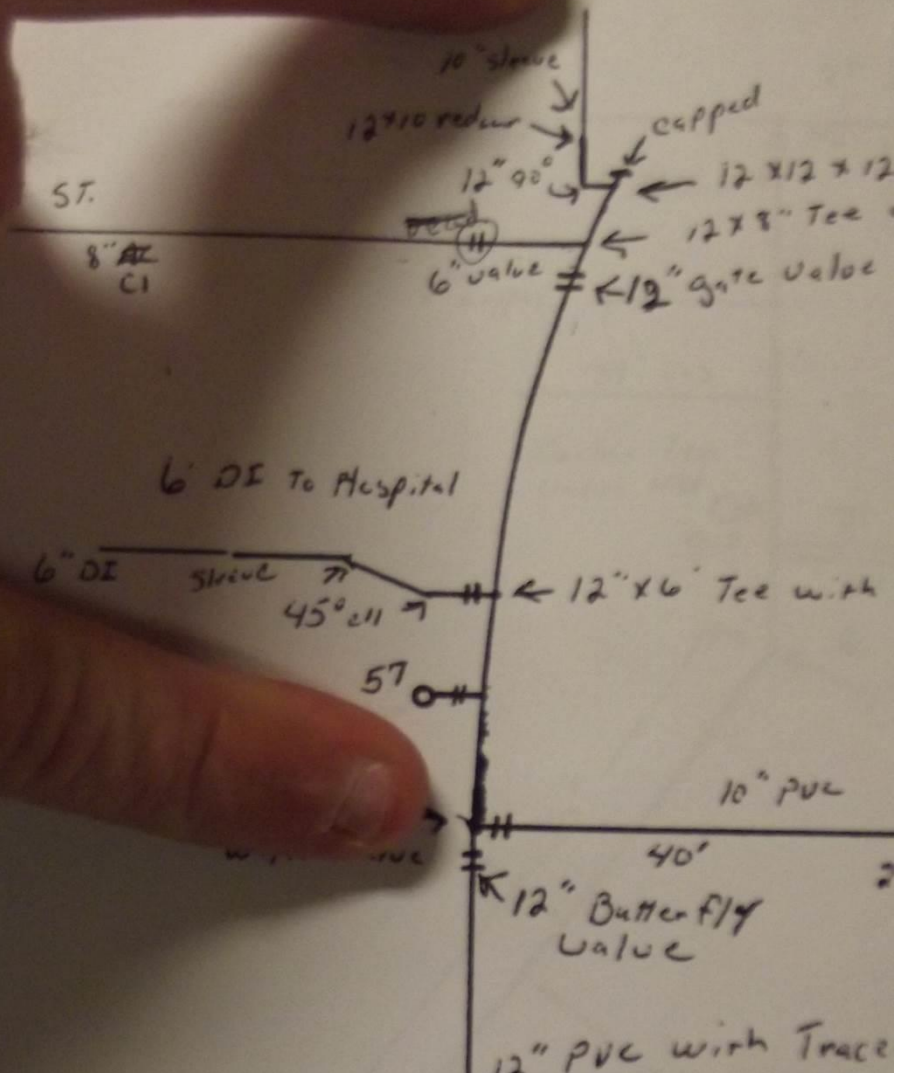




870'  
Total  
Length



R.A.B.



ST.

8" AC  
CI

6" DI To Hospital

6" DI stove

45° ell

57

12" x 6" Tee with

10" PVC

40"

12" Butterfly  
Valve

12" PVC with Trace

Procedure for  
3<sup>rd</sup> on R leg

Let's go Open  
Valves!

Open This valve

Close This valve

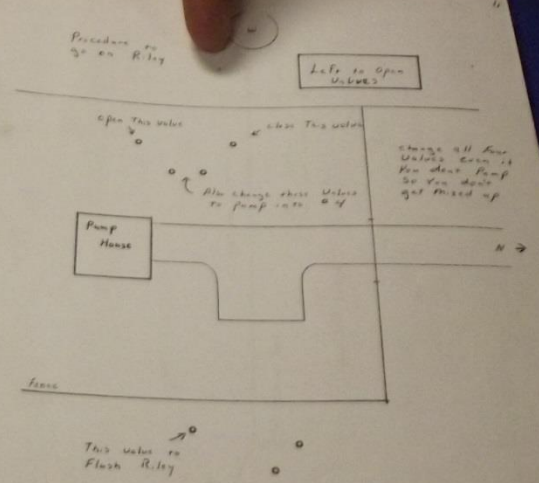
Also change these valves  
to pump into # 4

change all four  
valves even if  
the other pump  
so you don't  
get mixed up

Pump  
House

Force

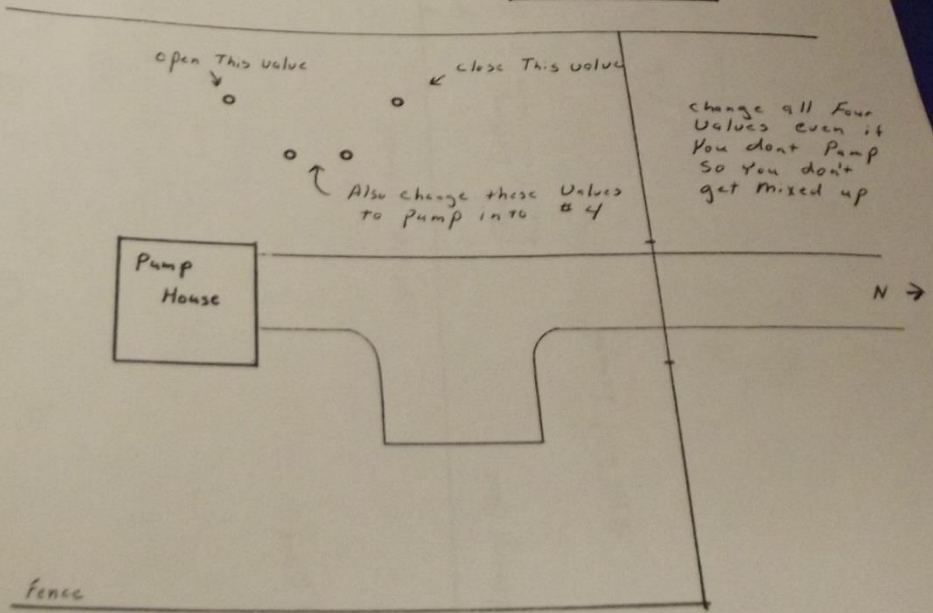
This valve to  
Flush R leg





Procedure to go on Riley

Left to Open valves



change all four valves even if you don't pump so you don't get mixed up

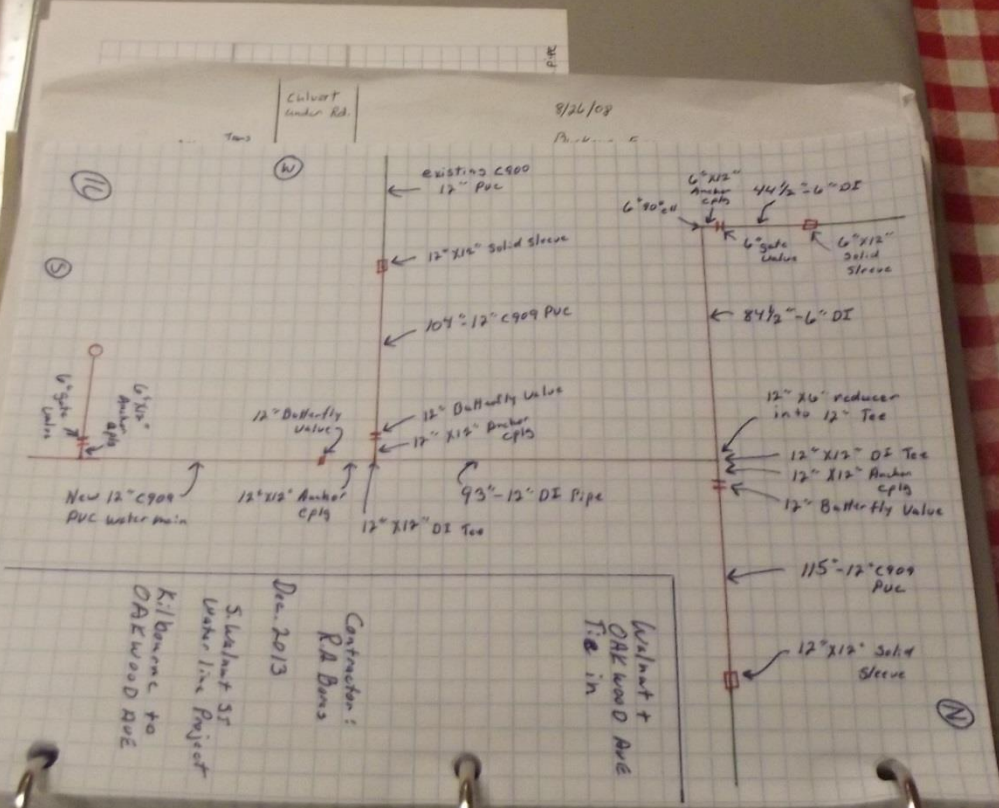
Pump House

N →

fence

This valve to flush Riley

w





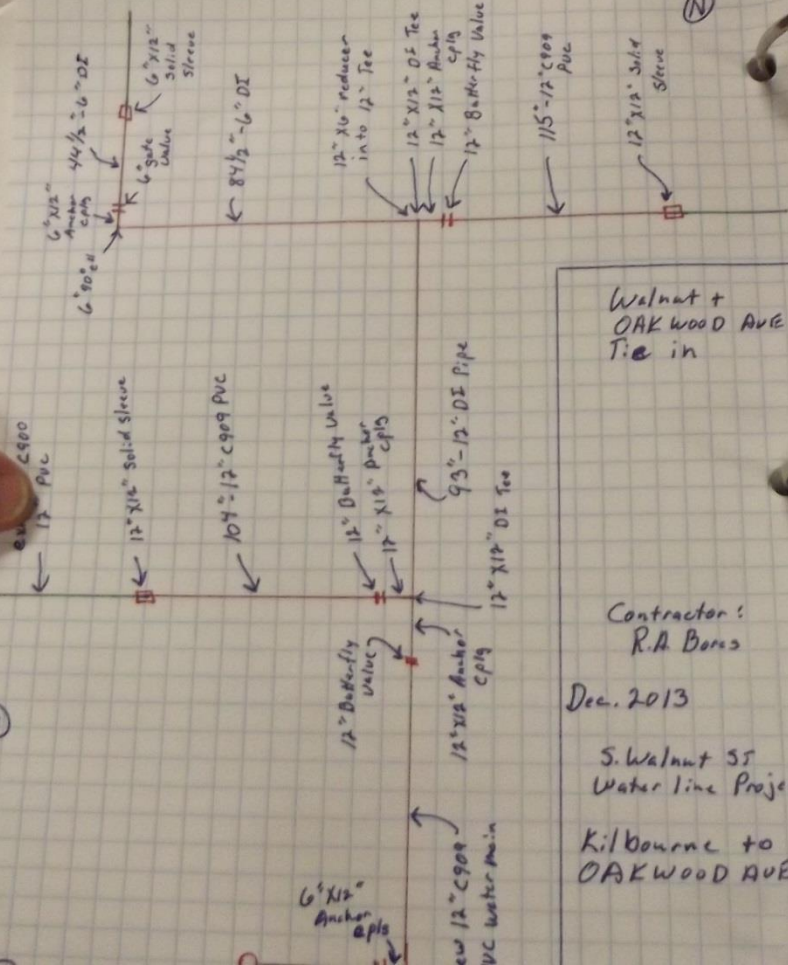


Calvert  
Avenue Rd.

Trans

(N)

8/26/08  
Buckeye E...



Walnut +  
OAK WOOD AVE  
Tie in

Contractor:  
R.A. Berra

Dec. 2013

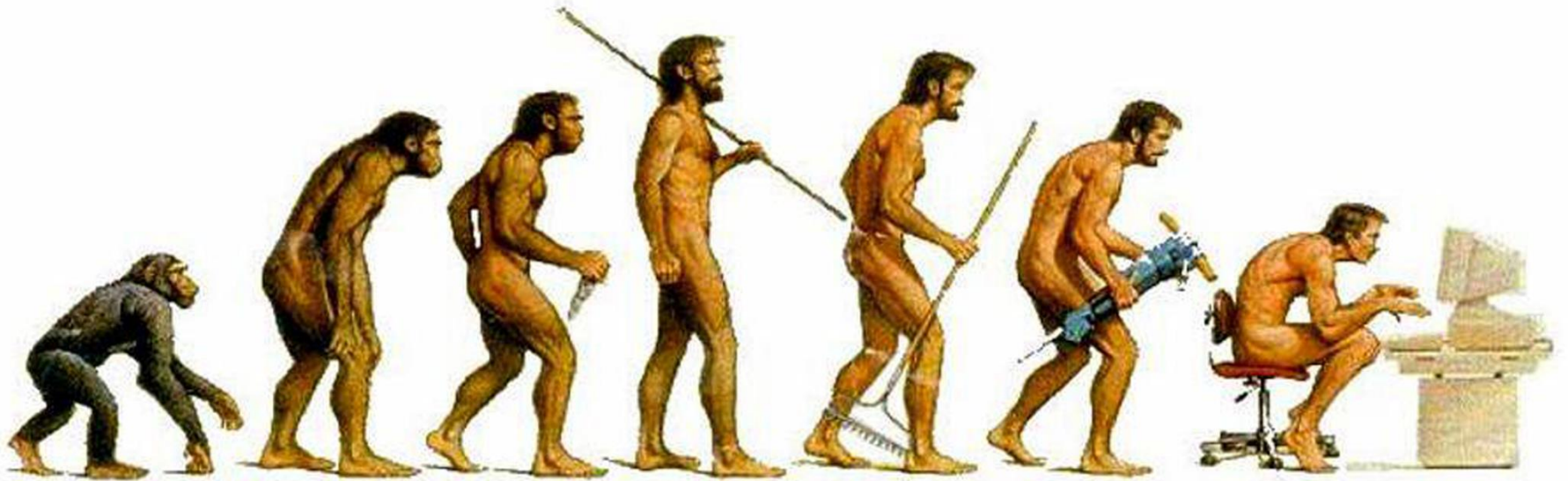
S. Walnut St  
Water line Project

Kilbourne to  
OAKWOOD AVE

(N)



# From Stone Age To Present







\$2,000.00

GEO XH  
*Dual Channel*

Survey Grade  
*2"-4" accuracy*

ArcPad 10.0



# ENTERING ATTRIBUTE INFORMATION























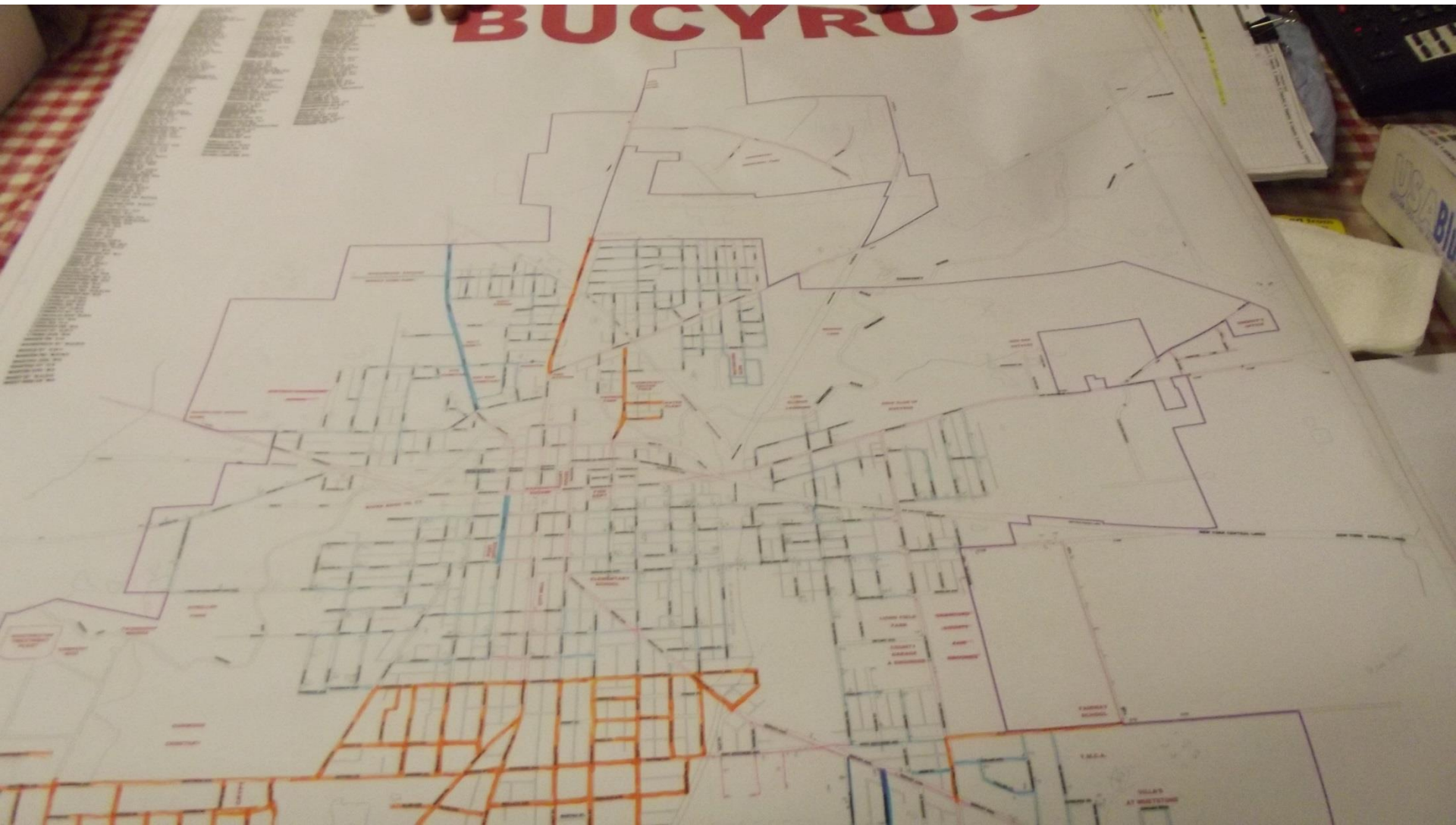




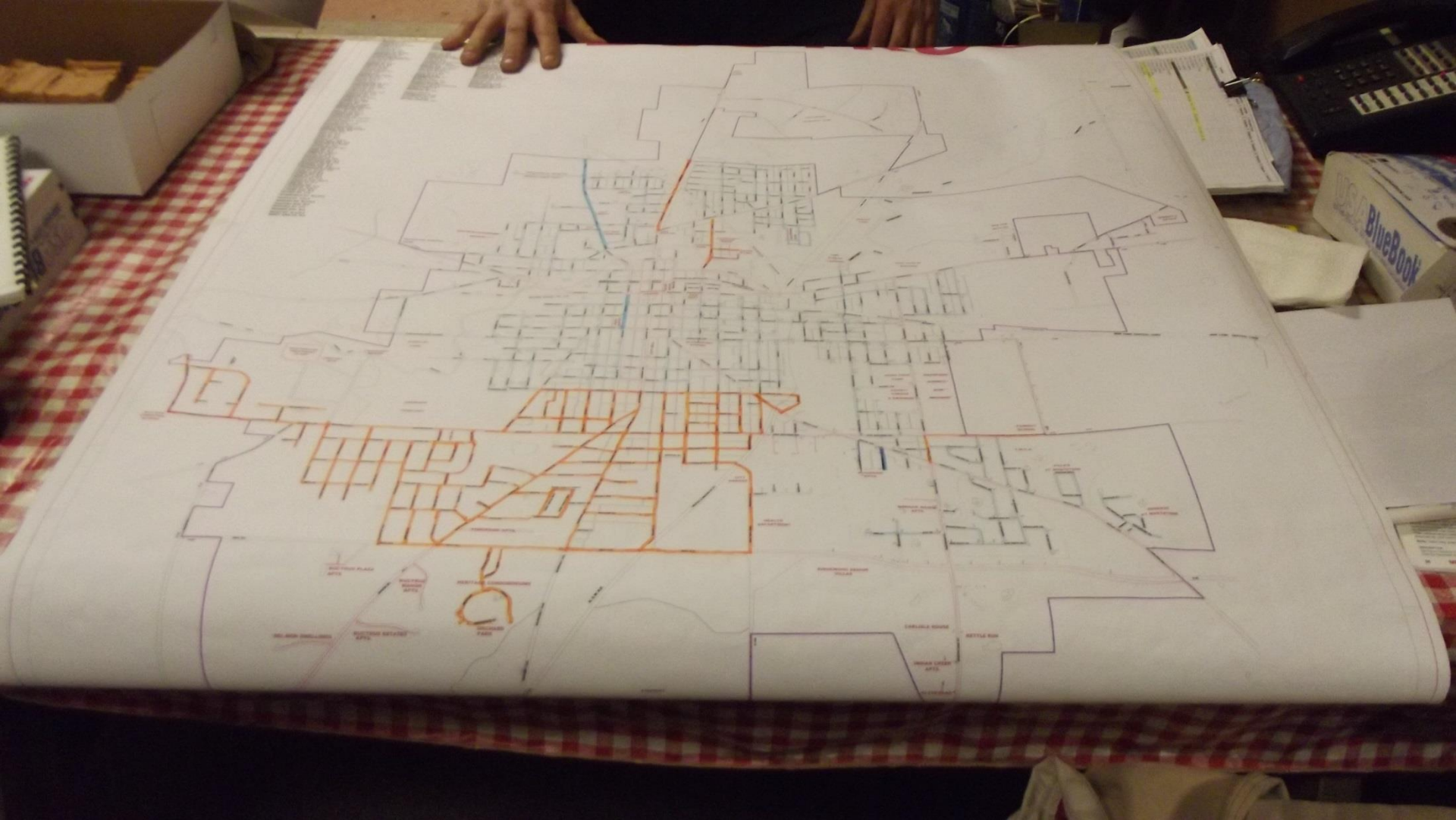




# BUCYRUS









NORTHWOOD ESTATES  
MOBILE HOME PARK

ODOT GARAGE

HOLY TRINITY

HTS CEMETARY

REV WAR CEMETARY

HOSPITAL

EMS STATION

HARMON/BAY SOCCER FIELD

HARMON PARK

WATER PLANT

WATERFORD GLEN

LIME SLUDGE LAGOONS

COURT HOUSE

WASHINGTON

SENSON YARD

RIVER

SANDUSKY RIVER

SANDUSKY RIVER

GOLF CLUB

BUCYR

SANDUSKY



