

The image is a composite of three vertical panels showing different industrial blower systems. The left panel features a grey blower with a large circular inlet and a control panel with a blue label. The middle panel shows a blower mounted on a grey metal frame. The right panel displays a blower with a large horizontal duct. The entire image is overlaid with semi-transparent, wavy light effects in shades of red, orange, yellow, green, and blue, creating a modern, technical aesthetic.

EXCELSIOR BLOWER SYSTEMS, INC.

WORLDWIDE PACKAGING

Excelsior Blower Systems, Inc. is an engineer and manufacturer of positive displacement blower and vacuum pump packages, acoustic enclosures, and engineered industrial products. As one of the largest blower package manufacturers in the United States we have the proven experience of thousands of installations worldwide.

Our team has decades of experience in the industry. We have the knowledge and skills to select the right blower for your application. Excelsior Blower is a service specialist with factory trained technicians available for blower repair and onsite blower service.



Authorized Distributor

SUTORBILT CYCLOBLOWER DUROFLOW HELIFLOW
AUTHORIZED FACTORY SERVICE AND WARRANTY CENTER

Since 1993, Excelsior Blower Systems, Inc. has been providing the highest standards of customer service and technical competency that Gardner Denver expects of an Authorized Distributor. Gardner Denver is pleased to confirm that Excelsior Blower will handle your SutorBilt, Cycloblower, Duroflow and Heliflow blower requirements



by Gardner Denver

HOFFMAN & LAMSON CERTIFIED®

Authorized Service Center

EXCELSIOR BLOWER SYSTEMS INC.

has successfully completed HOFFMAN® & LAMSON® Factory Training and is Authorized by Gardner Denver to provide service, warranty repairs and OEM parts for HOFFMAN & LAMSON products.

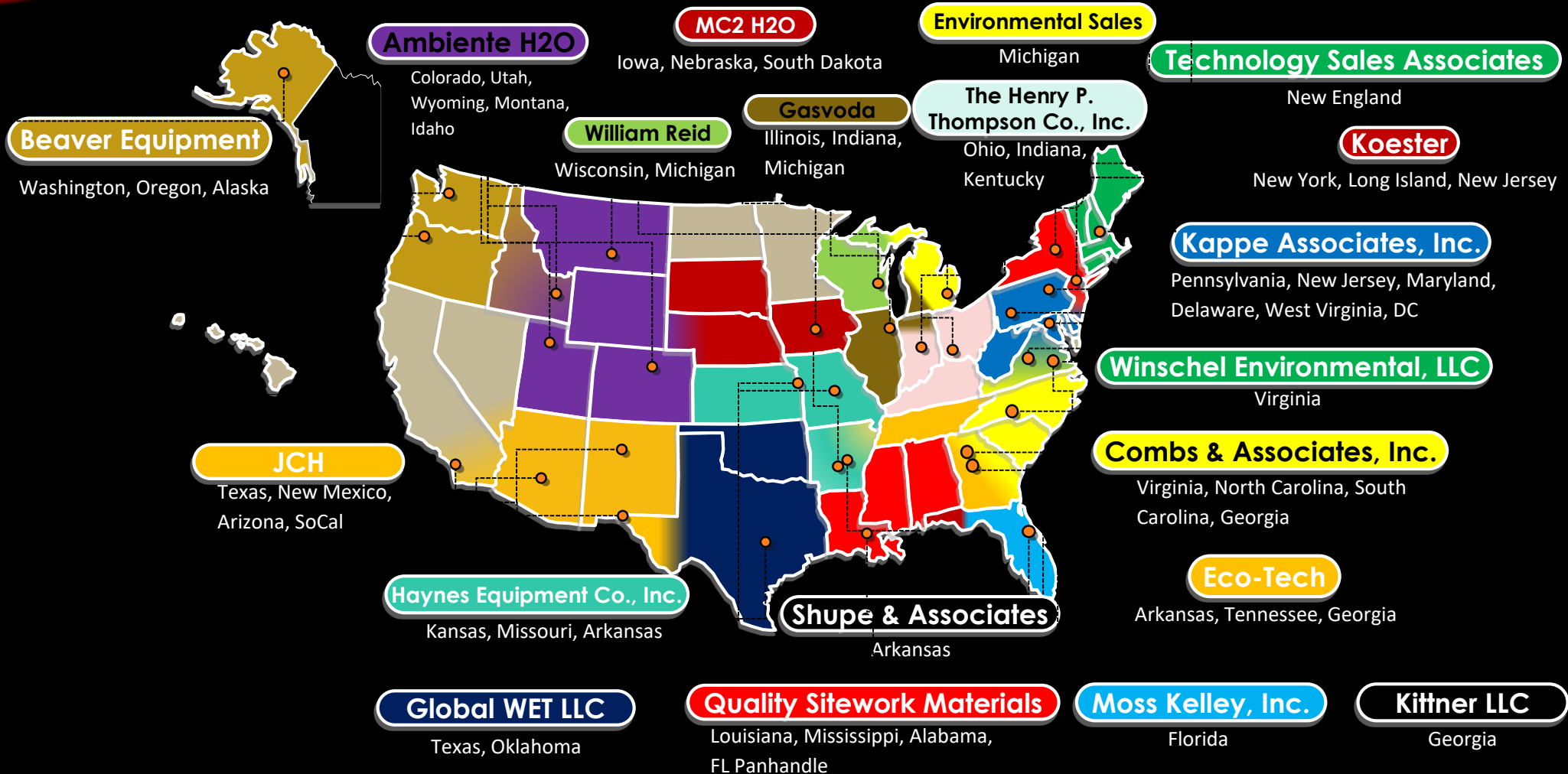
Effective Date: 05/31/2017



GENUINE OEM PARTS
FACTORY TRAINED TECHNICIANS
WARRANTY REPAIRS

HOFFMAN & LAMSON CERTIFIED
QUALITY & PERFORMANCE GUARANTEE

EXCELSIOR BLOWER WASTEWATER REP NETWORK



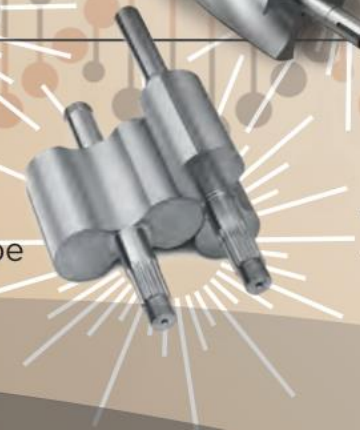
the Gardner Denver
BLOWER EVOLUTION

**Gardner
Denver**

1930's
Bi-Lobe



1950's
Solid Bi-Lobe



1950's
2x4 Helical Screw



1990'S
Tri-Lobe



2005
Helical Tri-Lobe



2015
3x5 Fixed Helical Screw



2018
3x5 Variable Helical Screw



The image is a promotional graphic for the SUTORBILT LEGEND SERIES. It is split vertically into two halves. The left half features a large, dark grey, cast metal pump housing with a prominent cooling finned section on the left side. The right half shows several smaller, dark grey metal components, including what appears to be a pump head, a shaft, and a bearing housing, arranged in a cluster. The background is a gradient of colors, with a warm orange and yellow glow at the top and a cool blue and cyan glow at the bottom. The text 'SUTORBILT LEGEND SERIES' is centered across the middle in a large, white, sans-serif font. Below it, the text 'Straight Bi-Lobe' is written in a smaller, white, sans-serif font.

SUTORBILT LEGEND SERIES

Straight Bi-Lobe

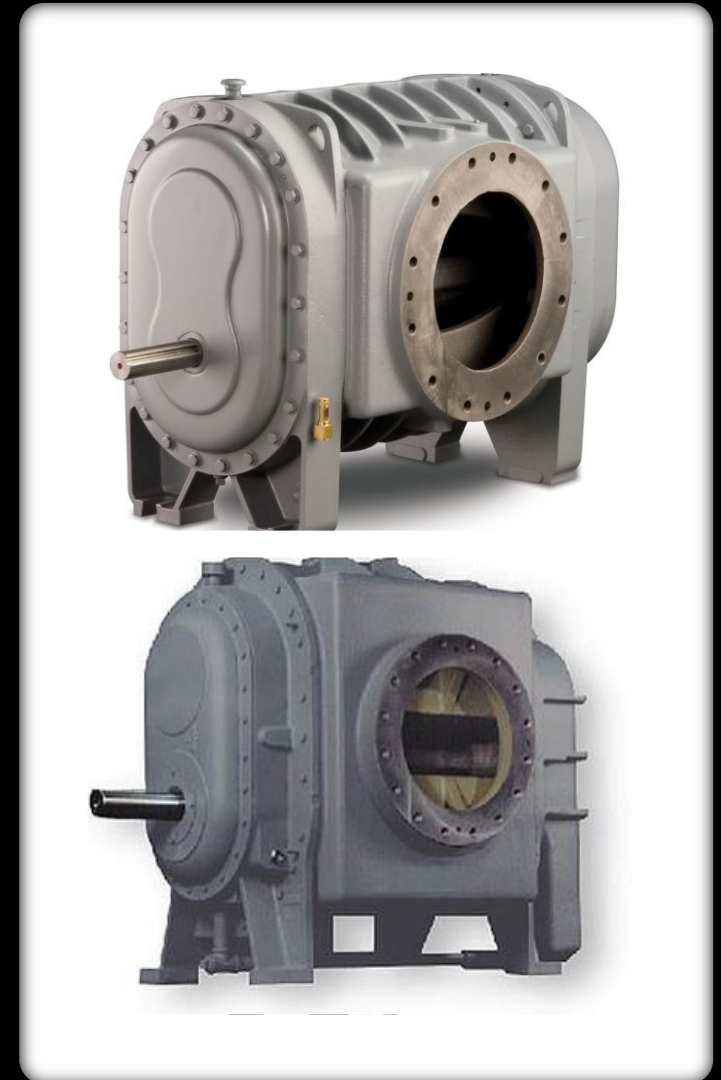
SUTORBILT LEGEND

- Sutorbilt Legend
 - 2L, 2M, 3L, 3M, 3H, 4L, 4M, 4H, 5L, 5M, 5H, 6L, 6M, 6H, 7L, 7M, 7H, 8L, 8M, 8H
 - 76 CFM– 1,666 CFM
 - 2 PSIG – 15 PSIG
 - 1.1 HP – 89.1 HP
- Sutorbilt Legend DSL
 - 3L, 3M, 3H, 4L, 4M, 4H, 5L, 5M, 5H, 6L, 6M, 6H
 - 149 CFM - 735 CFM
 - 2 PSIG – 15 PSIG
 - 1.9 HP – 59.7 HP
- Sutorbilt Legend Q Series
 - 3MQ, 4HQ, 4MQ, 5MQ, 6MQ
 - 64 CFM – 815 CFM
 - 7 PSIG – 15 PSIG
 - 3.6 HP – 59.7 HP



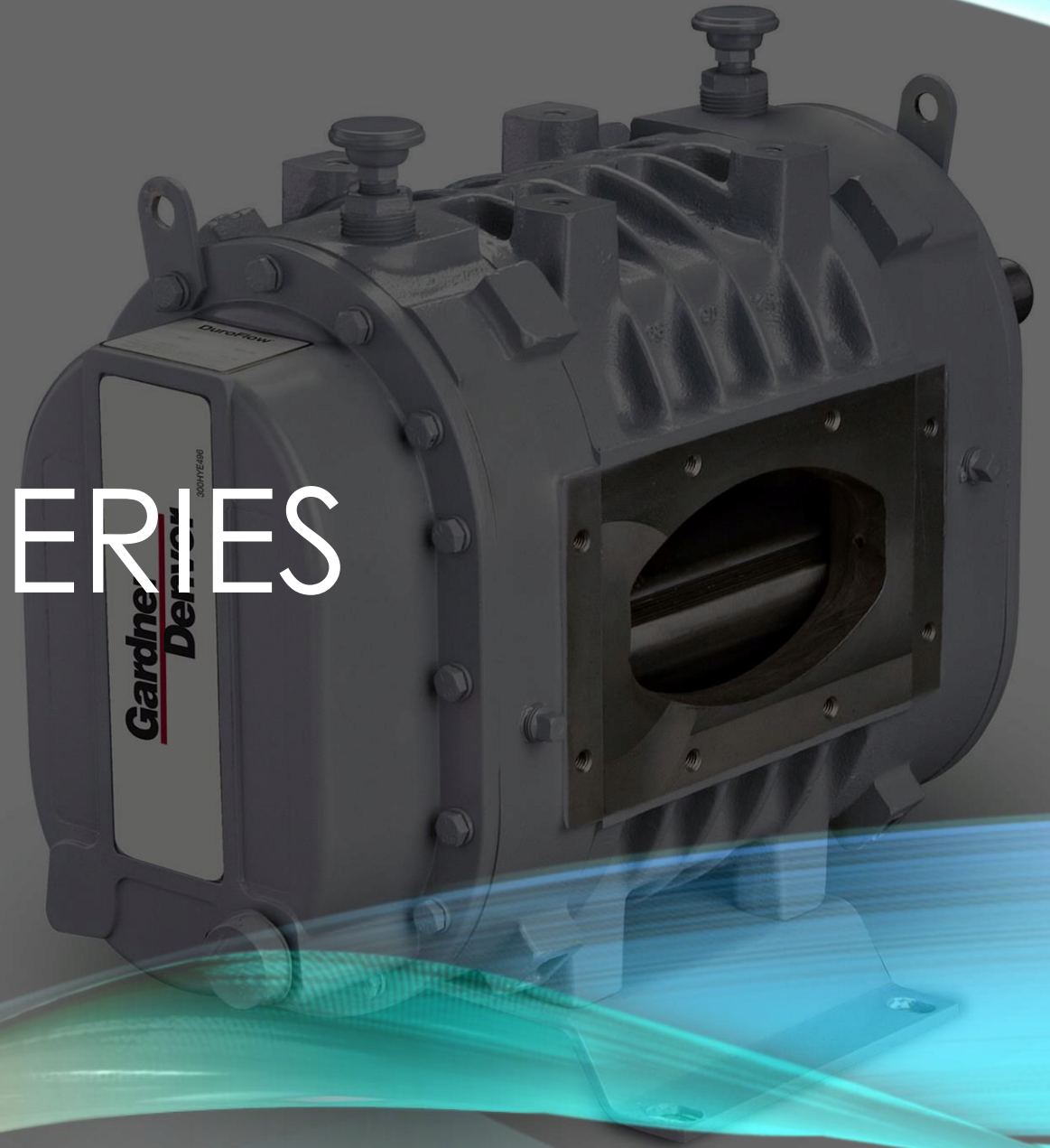
SUTORBILT LEGEND

- Sutorbilt 4500
 - 608, 612, 615, 618, 711, 713, 716, 721, 812, 816, 820, 824
 - 396 CFM – 3929 CFM
 - 6 PSIG – 15 PSIG
 - 10.1 HP – 150.7 HP
- Sutorbilt 10"-12" 8000 & 8000Q
 - 1008, 1011, 1013, 1016(Q), 1018(Q), 1021(Q), 1024(Q), 1030(Q), 1213, 1216, 1218(Q), 1220(Q), 1223(Q), 1226(Q), 1230(Q), 1236(Q)
 - 1412 CFM – 9480 CFM
 - 6 PSIG – 18 PSIG
 - 46HP – 412 HP
- Sutorbilt 14"-22" 8000Q
 - 1421-Q, 1423-Q, 1426-Q, 1437-Q, 1442-Q, 1626-Q, 1630-Q, 1640-Q, 1648-Q, 1833-Q, 1845-Q, 2040-Q, 2048-Q, 2242-Q, 2254-Q
 - 4773 CFM – 26,117 CFM
 - 6 PSIG – 15 PSIG
 - 153 HP – 1315 HP



DUROFLOW SERIES

Straight Bi-Lobe



DUROFLOW

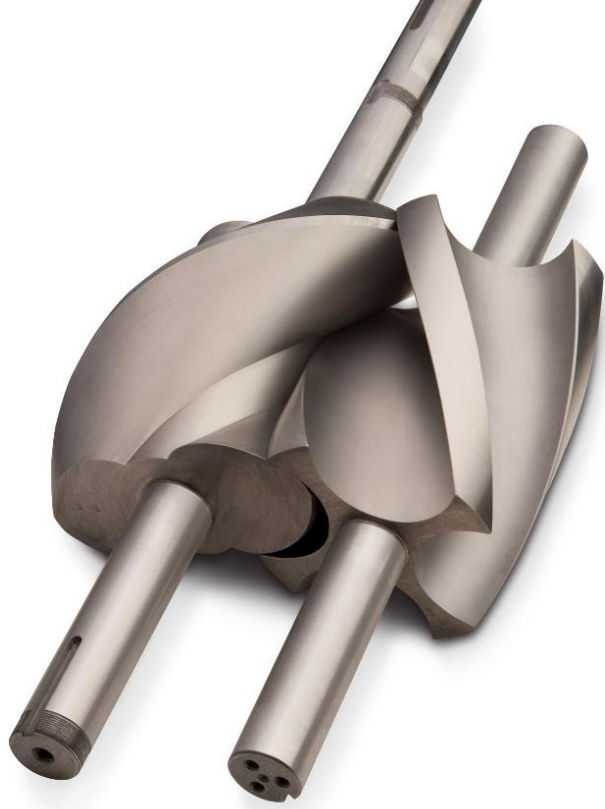
- 30 Series
 - 3004, 3006
 - 94 CFM – 231 CFM
 - 4 PSIG – 15 PSIG
 - 2.5 HP – 18.3 HP
- 45 Series
 - 4504, 4506, 4509, 4512, 4518
 - 137 CFM – 1830 CFM
 - 4 PSIG – 15 PSIG
 - 3.7 HP – 98.5 HP
- 70 Series
 - 7009, 7012, 7015, 7018, 7023, 7028
 - 622 CFM – 4118 CFM
 - 4 PSIG – 15 PSIG
 - 15.8 HP – 225.5 HP





CYCLOBLOWER

2x4 Screw Fixed Helix



CYCLOBLOWER

- CycloBlower
 - 3CDL5, 3CDL8, A5CDL5, A5CDL9, A5CDL13, 5CDL5, 5CDL9, 5CDL13
 - 62 CFM – 1121 CFM
 - 5 PSIG – 20 PSIG
 - 1.8 HP – 101.3 HP
- CycloBlower
 - 7CDL11, 7CDL14, 7CDL17, 9CDL13, 9CDL18, 9CDL23, 11CDL23, 11CDL27, 11CDL31
 - 330 CFM – 6611 CFM
 - 5 PSIG – 20 PSIG
 - 10 HP – 619.4 HP



TRIFLOW SERIES

Straight Tri-Lobe



**Gardner
Denver**

GARDNER DENVER
TriFlow™
Low Pulse Blower / Vacuum Pump

TRIFLOW SERIES

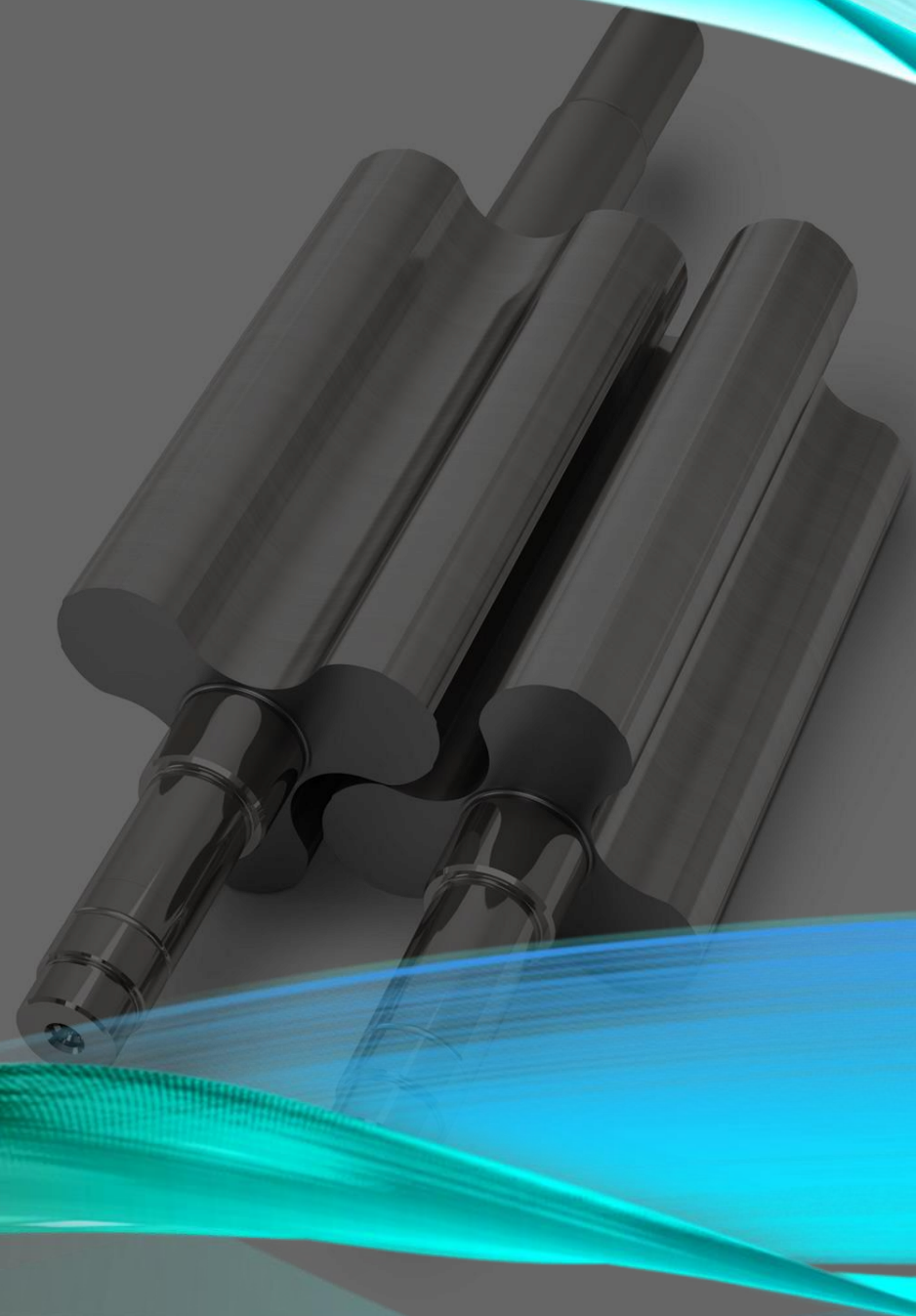
- TriFlow
 - 406, 408, 410
 - 127 CFM – 708 CFM
 - 10" Hg – 16" Hg
 - 4.4 HP – 33.9 HP





RBS SERIES

Straight Tri-Lobe



RBS SERIES

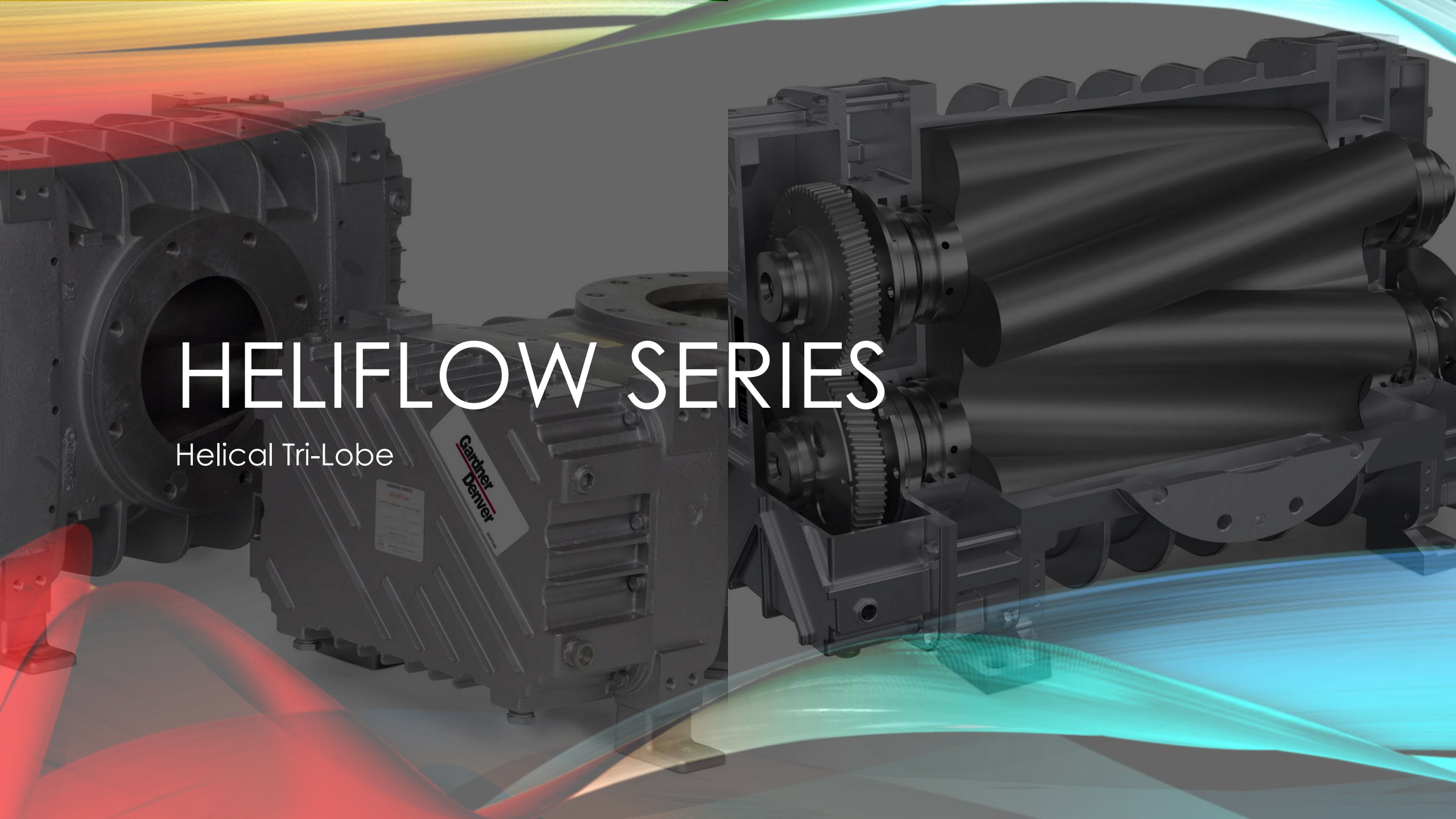
- Medium Pressure RBS Units
 - 25, 46, 66, 86, 106, 126, 155, 225
 - 39.8 CFM – 14,584.0 CFM
 - 4 PSIG – 10 PSIG
 - 1.7 HP – 721.6 HP
- High Pressure RBS Units
 - 15, 35, 45, 55, 65, 75, 85, 95, 105, 115, 125, 135, 145, 165, 175, 205
 - 31.2 CFM – 9899.4 CFM
 - 4 PSIG – 15 PSIG
 - 1.3 HP – 722.1 HP

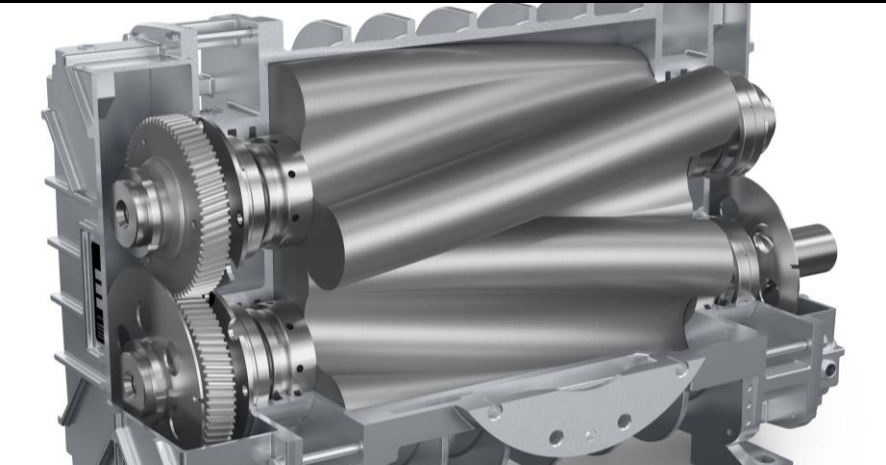


HELIFLOW SERIES

Helical Tri-Lobe

Gardner
Denver



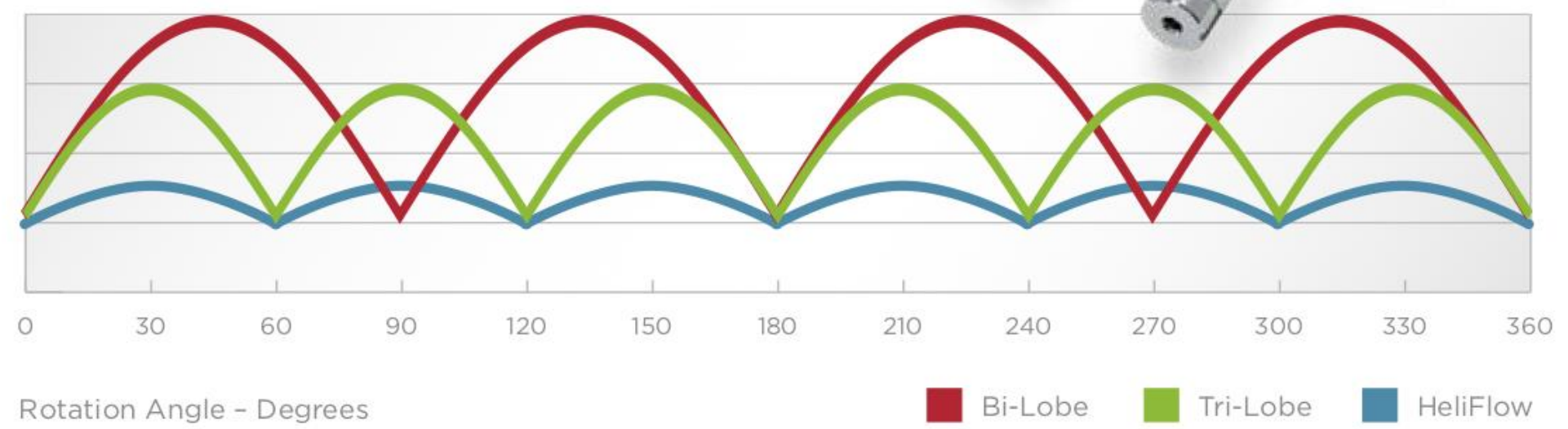


HELIFLOW

- HeliFlow
 - 406, 408
 - 147 CFM – 592 CFM
 - 5 PSIG – 15 PSIG 4.7 HP – 50.5 HP
- HeliFlow
 - 412, 514, 616, 624
 - 349 CFM – 3108 CFM
 - 5 PSIG – 15 PSIG 10.8 HP – 197.4 HP
- HeliFlow
 - 817, 825
 - 1006 CFM – 4365 CFM
 - 5 PSIG – 18 PSIG 30.7 HP – 348.0 HP



CHANGE IN PRESSURE PULSE





CYCLOBLOWER H.E.

3x5 Screw Fixed Helix

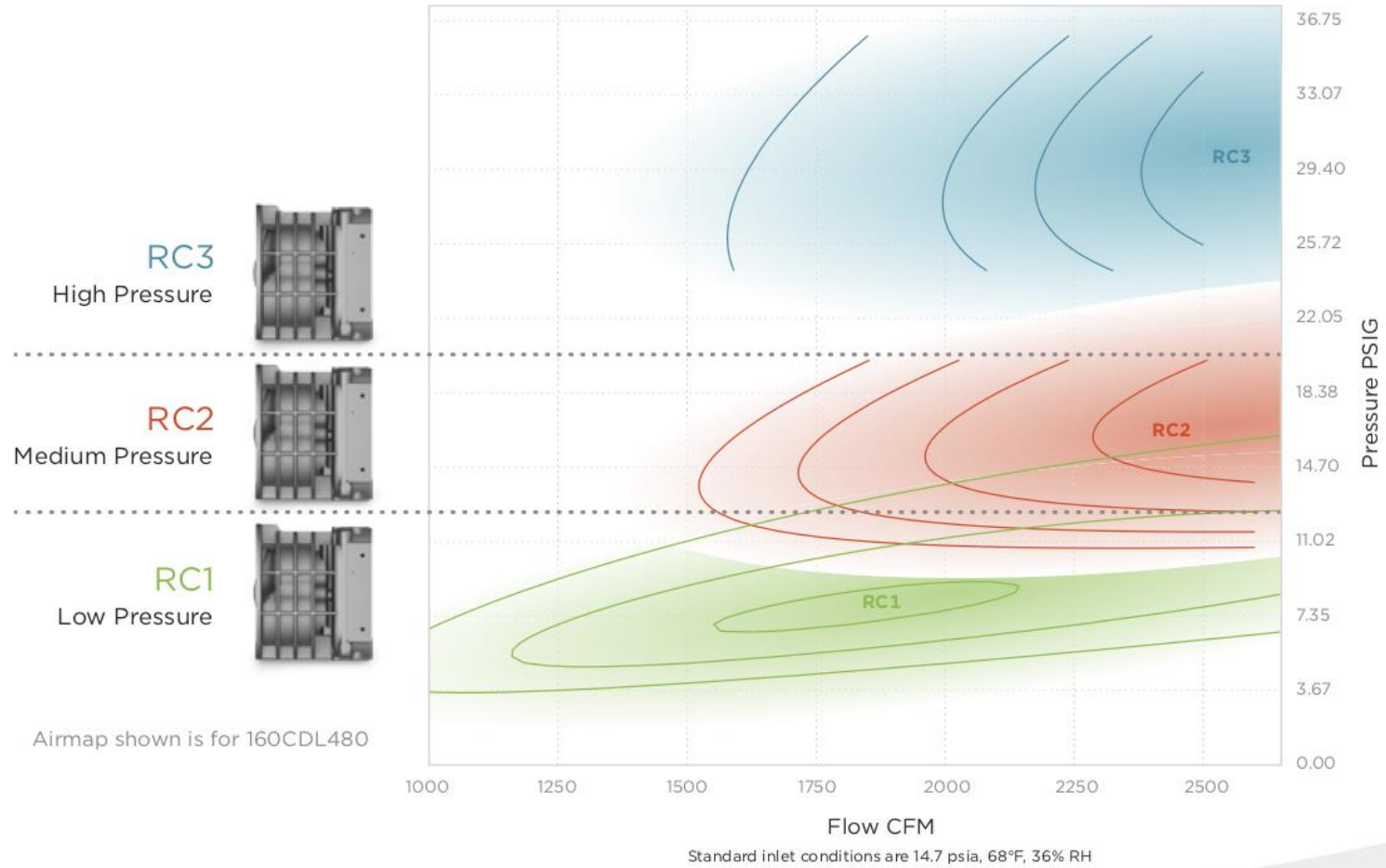
Enhancing Performance Through Innovative Design

- Exclusive split-cylinder design matches performance to your application requirements
- Three discharge port options optimize efficiencies based on your specific performance needs

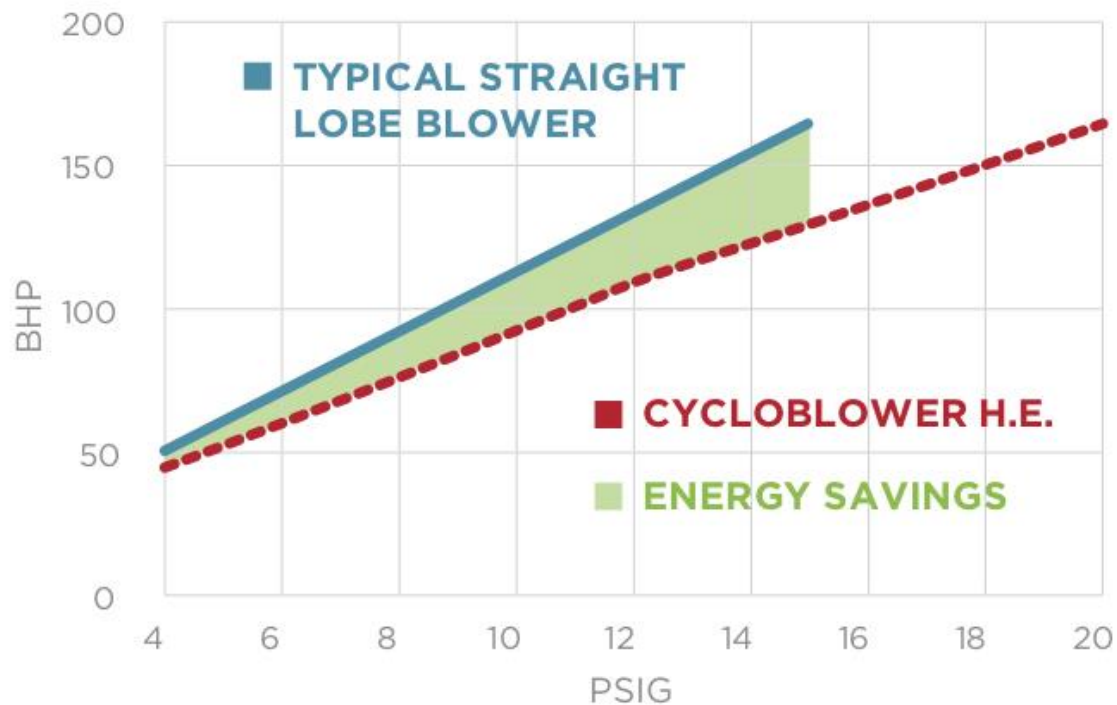


Optimized Efficiency

Modified Cylinder for Maximized Savings



Brake Horsepower Requirement Comparison at 2000 CFM



Innovation Working for You!

In many comparable applications, the CycloBlower operates more efficiently than other straight-lobe blowers. By requiring less brake horsepower (BHP) energy operating cost can be realized and greatly reduced.

CYCLOBLOWER H.E. VS. STRAIGHT LOBE

BLOWER TECHNOLOGY	BHP USED @ 15 PSI	ENERGY COST PER YEAR
Standard Straight Lobe	163	\$106,695
CycloBlower H.E.	129	\$84,604

\$22,090
ANNUAL SAVINGS

*Calculations based on the cost of providing 2,000 cfm of air for 8760 hours
(1 year of 24/7 operation) assuming motor drive efficiency of 90% and electricity cost of \$0.09/kWh.

CYCLOBLOWER H.E. 160CDL480

LOW PRESSURE

- RC1
- 5 PSIG – 15 PSIG
- 542.8 CFM – 2641.1 CFM
- 15.9 HP – 165.0 HP

LOW PRESSURE

- RC2
- 5 PSIG – 20 PSIG
- 509.0 CFM – 2582.4 CFM
- 18.2 HP – 198.2 HP

LOW PRESSURE

- RC3
- 12 PSIG – 20 PSIG
- 395.1 CFM – 2470.3 CFM
- 41.9 HP – 213.2 HP



HIGH PRESSURE

- RC2
- 21 PSIG – 30 PSIG
- 351.6 CFM – 2433.4 CFM
- 56.0 HP – 279.2 HP

HIGH PRESSURE

- RC3
- 21 PSIG – 36 PSIG
- 366.8 CFM – 2447.8 CFM
- 56.2 HP – 305.1 HP

CYCLOBLOWER H.E. 200CDL600

LOW PRESSURE

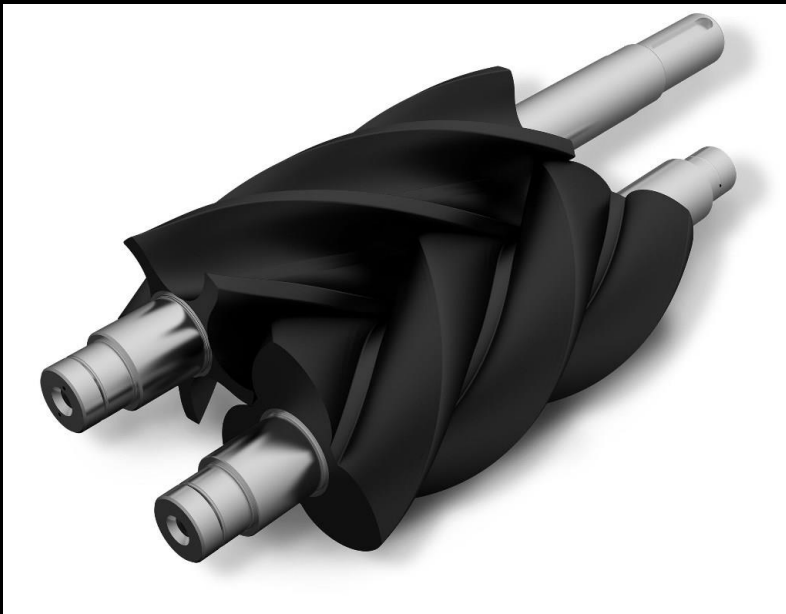
- RC1
- 5 PSIG – 18 PSIG
- 891.7 CFM – 3904.8 CFM
- 23.4 HP – 288.6 HP

LOW PRESSURE

- RC2
- 5 PSIG – 20 PSIG
- 828.8 CFM – 3864.9 CFM
- 26.8 HP – 295.2 HP

LOW PRESSURE

- RC3
- 12 PSIG – 20 PSIG
- 752.2 CFM – 3800.0 CFM
- 56.3 HP – 320.4 HP



HIGH PRESSURE

- RC2
- 21 PSIG – 30 PSIG
- 574.2 CFM – 3680.9 CFM
- 88.3 HP – 415.1 HP

HIGH PRESSURE

- RC3
- 21 PSIG – 36 PSIG
- 660.3 CFM – 3727.9 CFM
- 85.0 HP – 459.5 HP

CYCLOBLOWER H.E. 250CDL750

LOW PRESSURE

- RC1
- 5 PSIG – 18 PSIG
- 893.1 CFM – 6050.9 CFM
- 28.5 HP – 450.7 HP

LOW PRESSURE

- RC2
- 5 PSIG – 20 PSIG
- 872.9 CFM – 6089.7 CFM
- 32.4 HP – 472.4 HP

LOW PRESSURE

- RC3
- 12 PSIG – 20 PSIG
- 692.0 CFM – 5893.9 CFM
- 64.9 HP – 510.5 HP



HIGH PRESSURE

- RC2
- 21 PSIG – 30 PSIG
- 537.9 CFM – 5833.7 CFM
- 109.7 HP – 657.4 HP

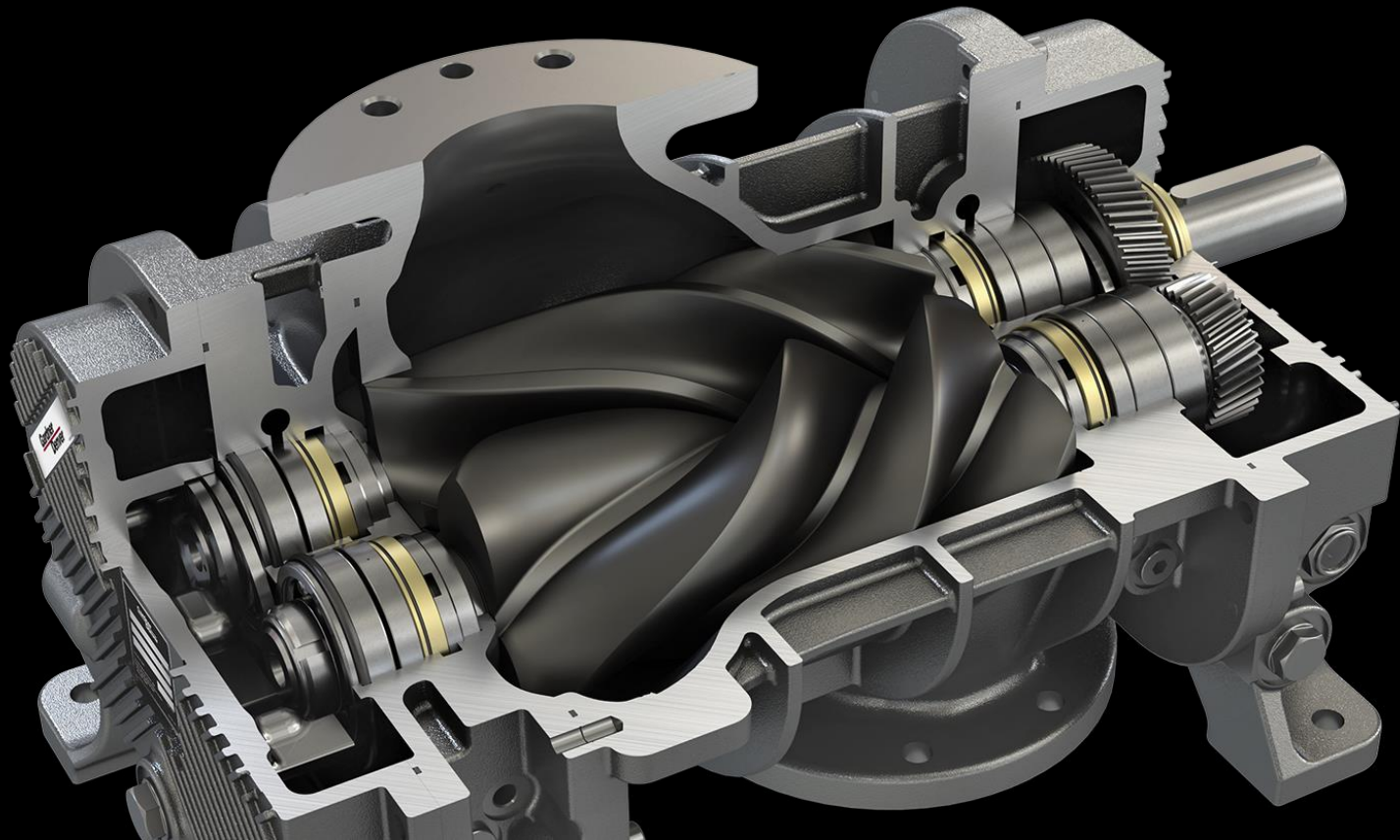
HIGH PRESSURE

- RC3
- 21 PSIG – 36 PSIG
- 552.8 CFM – 5781.4 CFM
- 105.1 HP – 725.3 HP



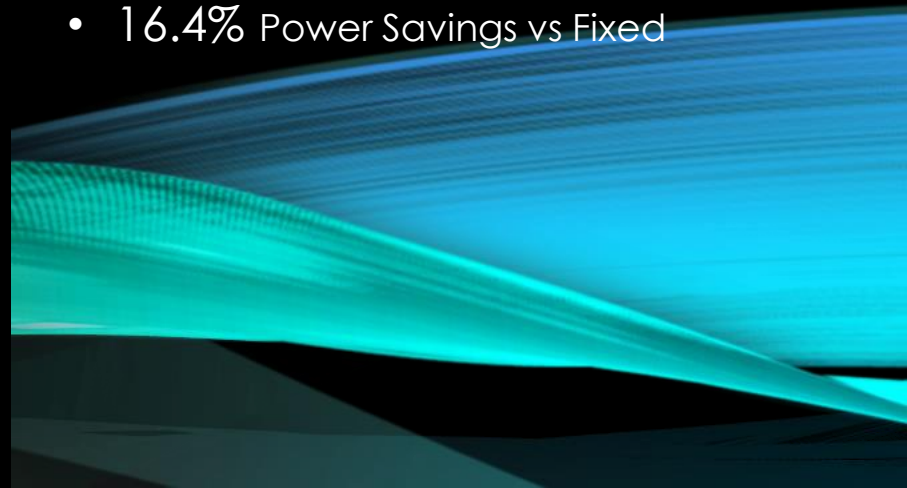
CYCLOBLOWER VHX

3x5 Screw Variable Helix



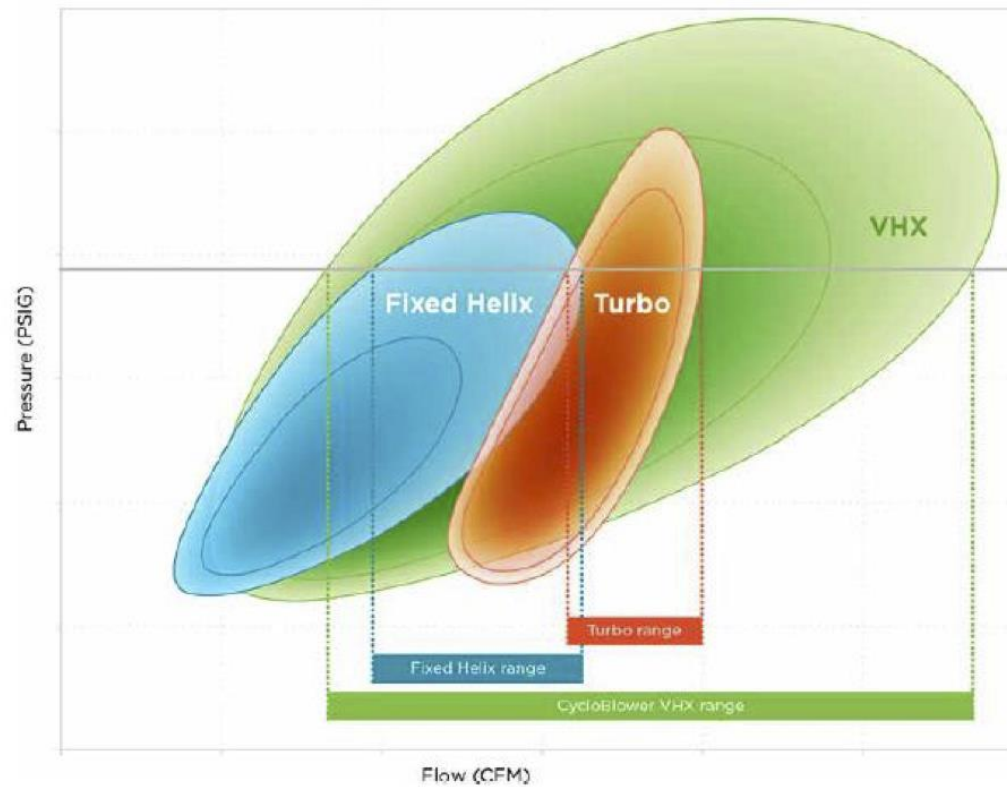
CYCLOBLOWER VHX

- 3x5 Screw Variable Helix
- Operating Limits
 - Discharge Pressure = 20 PSIG
 - Inlet Vacuum = 18" Hg
 - Air Flow up to 775 CFM
- 300 CFM @ 10 PSIG = 16.5 HP
 - 19.8% Power Savings vs Fixed
- 500 SCFM @ 20 PSIG = 46.0 HP
 - 22.7% Power Savings vs Fixed
- 710 SCFM @ 15 PSIG = 52.6 HP
 - 16.4% Power Savings vs Fixed



It's all about...the **Efficient Turndown**

Turndown Efficiency Comparison



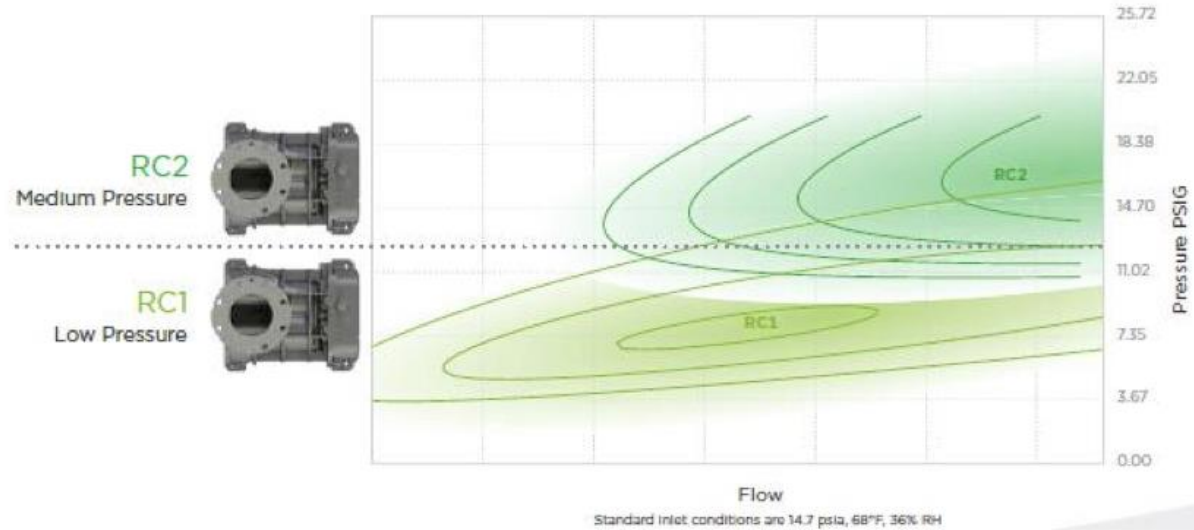
Don't Lose Efficiency for Wider Turndown Capability

Enhancing Performance Through Innovative Design

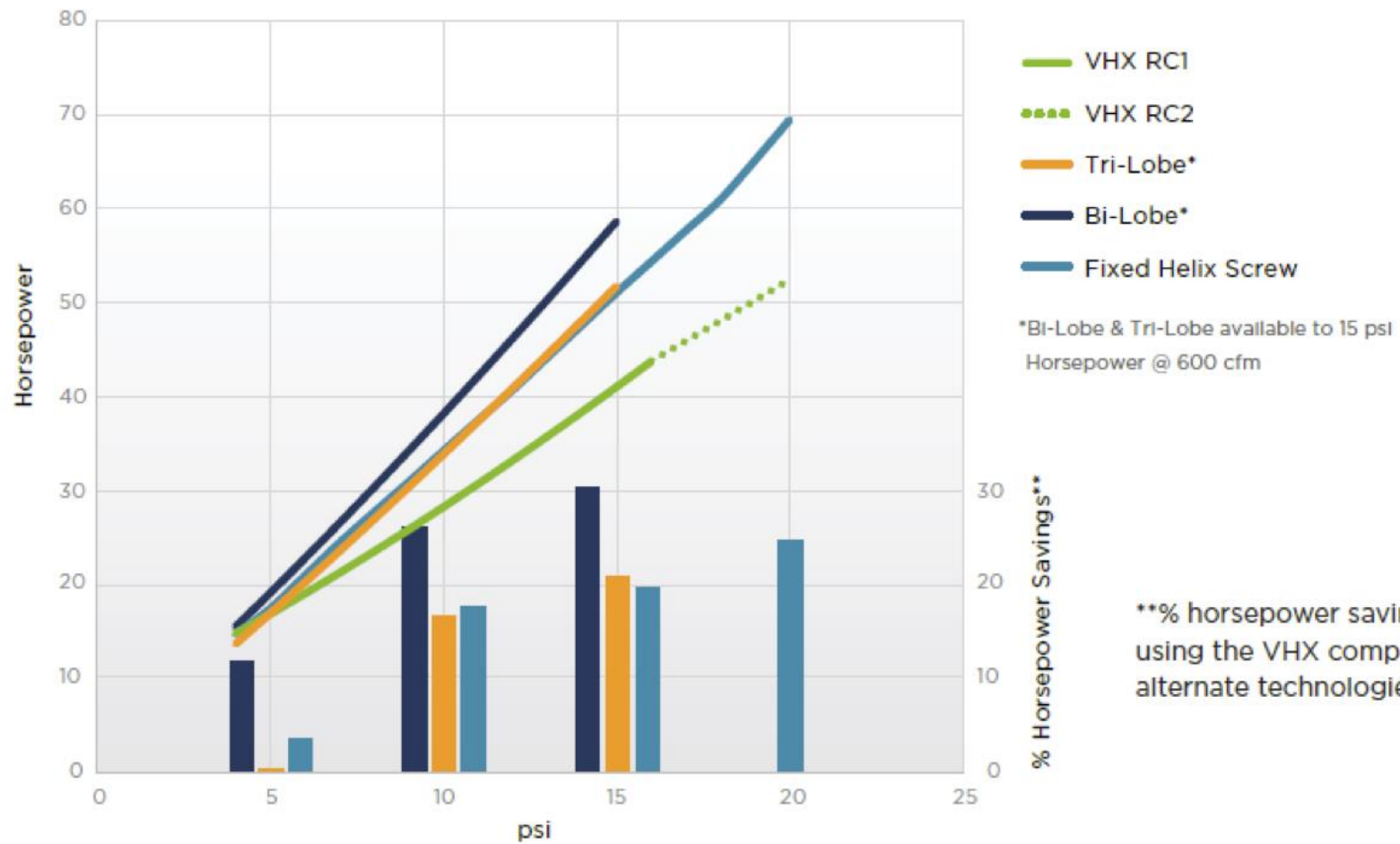
- Two cylinder options tailor to your application requirements
- Exclusive port designs optimize efficiency based on your specific performance need



Optimized Efficiency
Modified Cylinder for Maximized Savings



HORSEPOWER SAVINGS



**% horsepower savings when using the VHX compared to alternate technologies.

The Result = the **Most Extensive & Innovative** Blower Line in the Industry to Meet Customer-Specific Needs

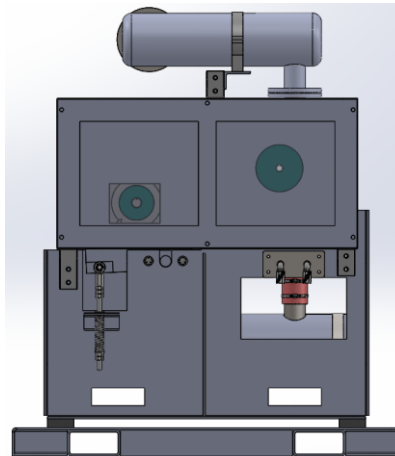
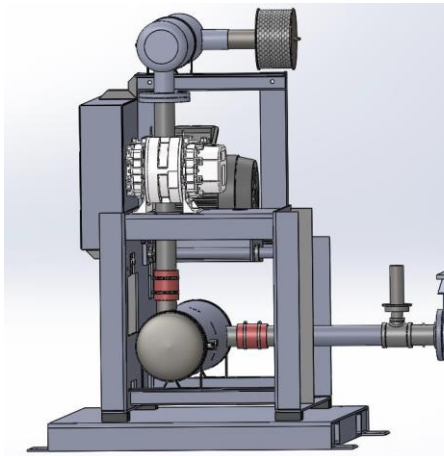
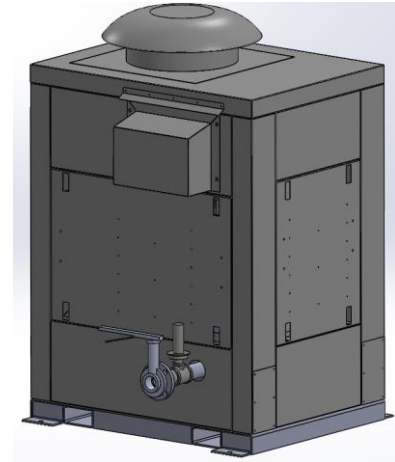
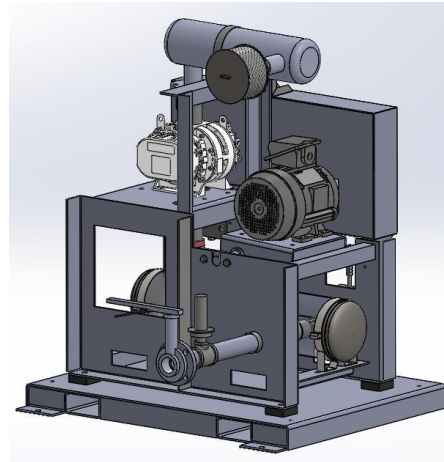


The image shows a factory environment with several large industrial machines. The machines are grey and have various components like fans and control panels. Some parts are wrapped in white protective paper. Handwritten numbers like '71921', '69511', and '12611' are visible on the machines. The scene is overlaid with a semi-transparent graphic consisting of red and blue wavy lines. The text 'COMPACT PACKAGE' is centered in white, bold, sans-serif font.

COMPACT PACKAGE

GEN II COMPACT PACKAGE

- Access Doors on all Four Sides
- Roof Mounted Exhaust Fan
- Panel Mounted Gauges
- Inlet Filter Weather Hood
- Auto Belt Tensioning
- Oil Drains
- Fork Lift Pockets
- Full Inlet Silencer w/ Integral Filter
- Full Discharge Silencer
- Flex-cons to Limit Piping Vibration



GEN II COMPACT PACKAGE

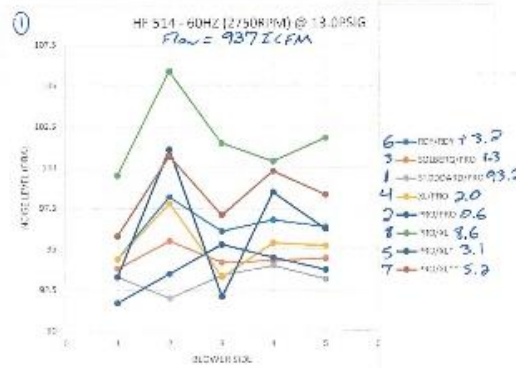
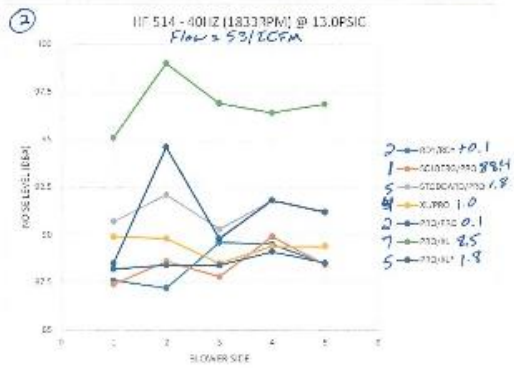
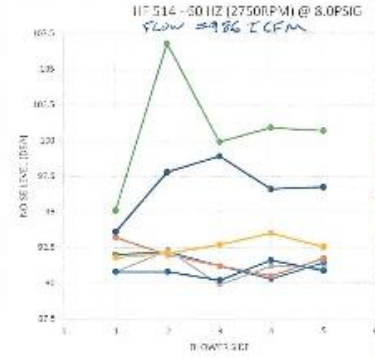
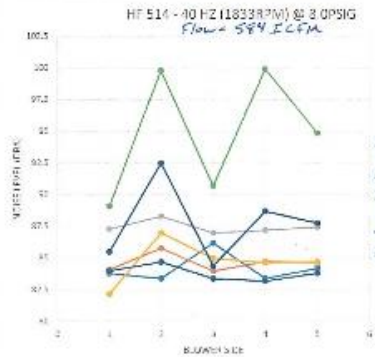


- 2" Compact - 3-10HP - 2L, 3M, 3H, 4H, 406
- 2.5" Compact - 3-20HP - 3L, 3M, 4M, 4H, 5H, 406
- 3" Compact - 7.5-30HP - 3L, 4L, 4M, 5M, 5H, 6H, 406, 408
- 4" Compact - 7.5-30HP - 5M, 6M, 406, 408
- 5" Compact - 15-75HP - 5L, 6M, 412
- 6" Compact - 25-75HP - 6L, 7M, 412, 514
- 8" Compact - 40-125HP - 514, 616

WE COMPACT NOISE TESTING

SILENCER CONFIG	40HZ (1833RPM) @ 8PSIG						60HZ (2750RPM) @ 8PSIG						60HZ (2750RPM) @ 13PSIG						OVER AVG.						
	GD NOISE	W/L	BLOWER	DISCH	MOTOR	AVG.	GD NOISE	W/L	BLOWER	DISCH	MOTOR	AVG.	GD NOISE	W/L	BLOWER	DISCH	MOTOR	AVG.							
RDY/SDY	77	81.6	83.4	85.2	83.4	84.7	87	91	92.7	91.7	93.3	91.7	81	87.5	87.7	89.5	89.5	88	94.4	90.7	95.8	95.4	93.1		
MOTOR/PRO	77	84.1	85.8	84	84.75	84.7	87	89.1	90	91.2	90.5	91.7	81	87.4	88.5	87.8	89.5	85.4	88	91.8	96.5	94.2	94.5	94.5	89.8
STD/SDY	77	87.5	88.5	87	87.2	87.5	87	90.8	92.8	89.9	91.2	91.1	81	90.7	92.1	90.5	91.8	91.2	88	92.8	92	93.4	91	93.2	90.7
SD/SDY	77	82.2	87	85	84.65	84.7	87	91.8	92.1	92.7	93.5	92.5	81	89.9	89.8	88.5	89.1	89.1	88	94.0	97.8	93.7	95.4	95.0	90.5
PRO/PRO	77	84	84.7	83.4	83.3	83.8	87	90.8	90.8	90.7	91.6	90.9	81	88.7	88.4	88.4	89.1	88.5	88	91.7	93.5	95.3	94.5	93.8	89.2
PRO/DL	77	85.1	86.8	90.7	89.9	89.4	87	96.1	106.8	99.9	102.8	100.7	81	95.1	89	96.9	96.4	96.9	88	93.5	105.9	101.5	100.4	101.8	98.6
PRO/WL*	77	85.5	82.5	84.4	88.7	87.8	87	92.6	97.8	98.9	96.6	96.7	81	88.5	84.6	85.8	91.5	91.2	88	93.9	101.1	92.0	98.5	96.5	91.8
PRO/WL**																			84	95.9	103.7	91.7	93.8	88.4	96.4

* 2" FOAM ON DISCH SILENCERS & 3" FOAM SIDE SKIRTS
** 2" FOAM ON DISCH SILENCER



Do we prefer inlet/disch to be same manufacturer? → Comes down to cost

Progress → Tim Stiles
- shorten disk silencer = cost → performance → minor

• couplings on packed end? → quoting
• saddles? → quoting
• Qty to be cost effective? > 5 or 10
• Remove useless "Drains" that are not at low point.

936 ICFM @ 8.0PSIG → 15 ft³ 4.1" W.C.
937 ICFM @ 13.0PSIG → 1 = 15 ft³ 3.2 - 3.4" W.C.

Less flow → Less Noise

Bill Kay
2.3" W.C. silencers become ineffective

Stock units - 20 or 25
- can do custom "sweet spot" to improve performance if we can provide standard flow.

Rating: 1200 ICFM @ 7.25" W.C.
9-10" W.C. really starts using lots of power

@ 4PSI → 4.85" W.C.
@ 13PSI → 4.4" W.C.

Location of Nozzles is important, volume more critical

Current Pricing

Inlet	Disch.
RDY-8635+P	RDY-8635
Solberg-8950	Prog-8695
Stoddard-8713/S	SDV-8497
Prog-8595+P	

Tim Stiles

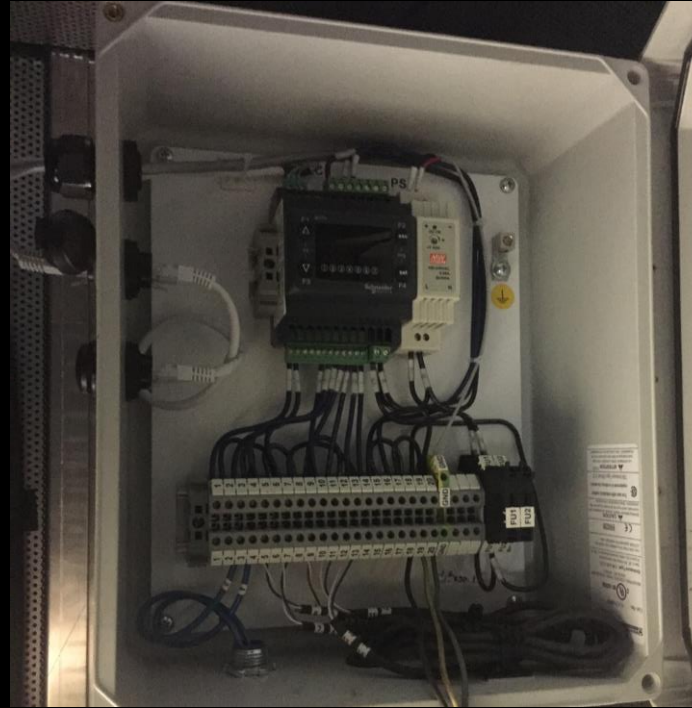


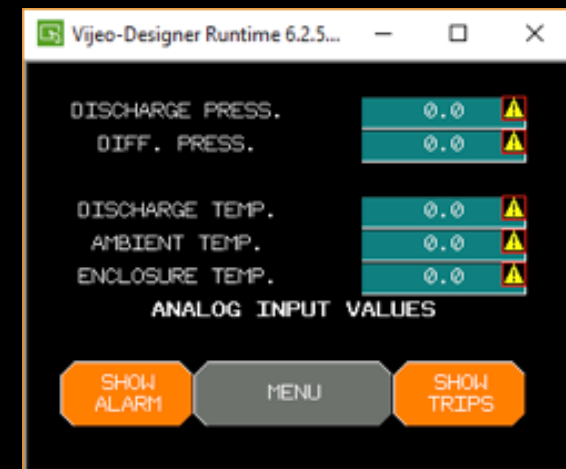
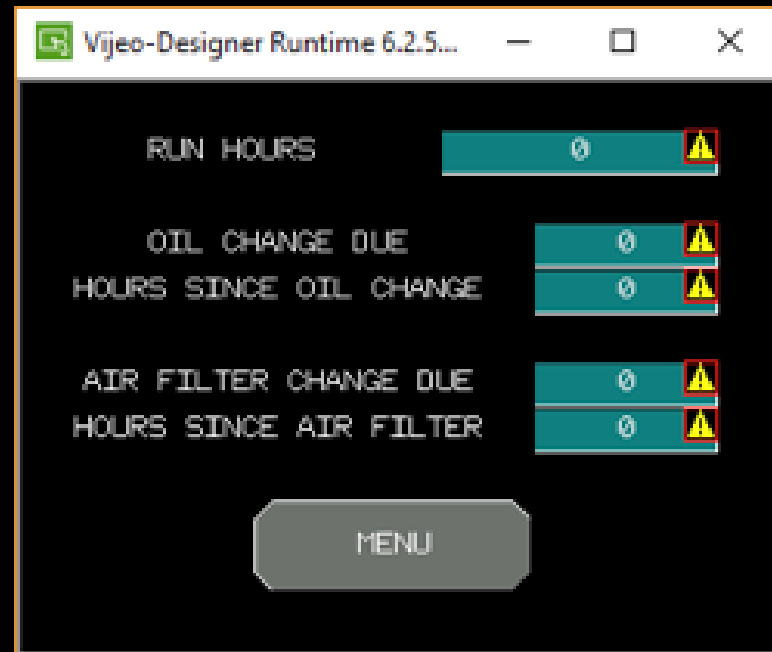
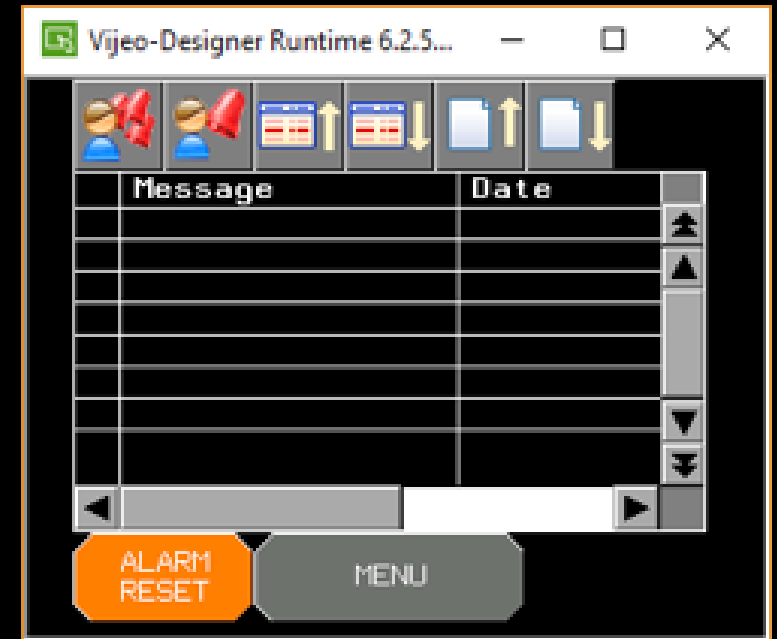
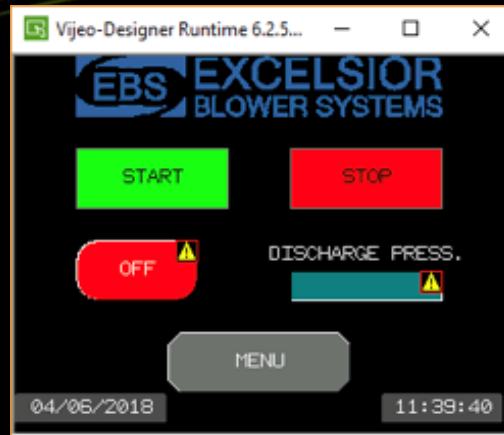
LOCAL CONTROLS HMI LCD

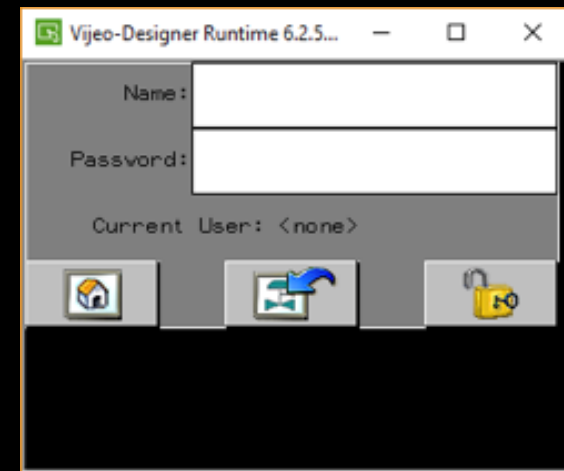
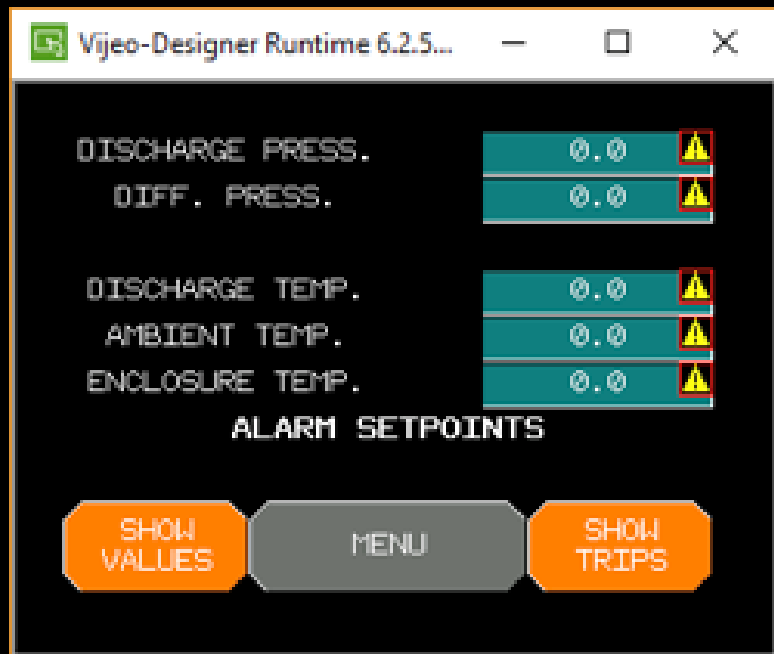
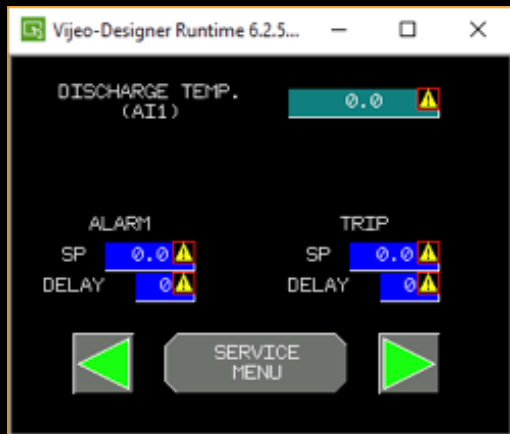
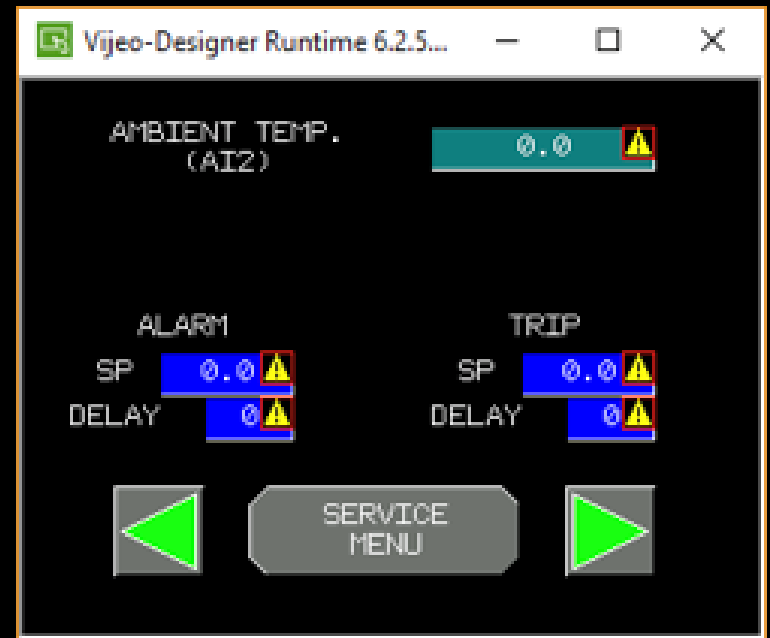
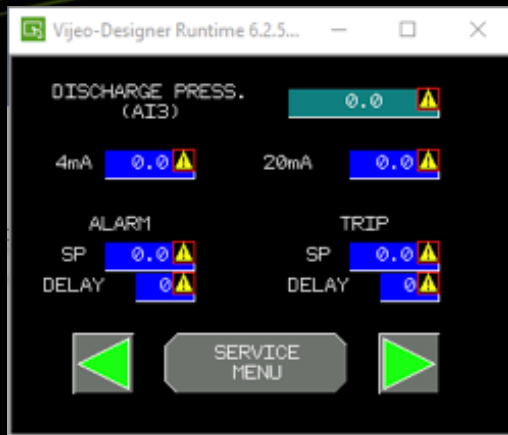
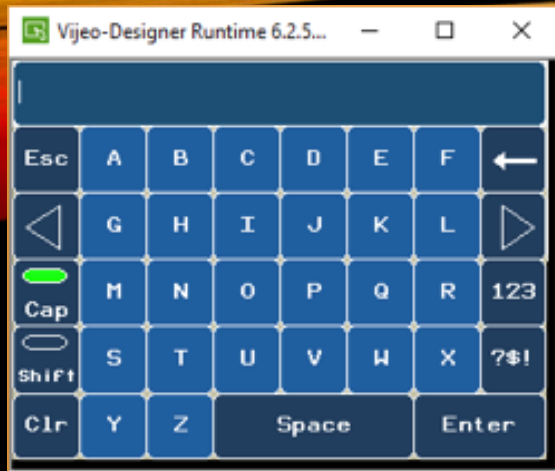


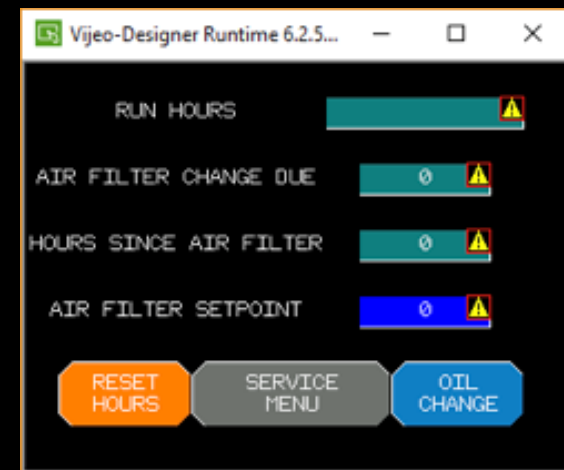
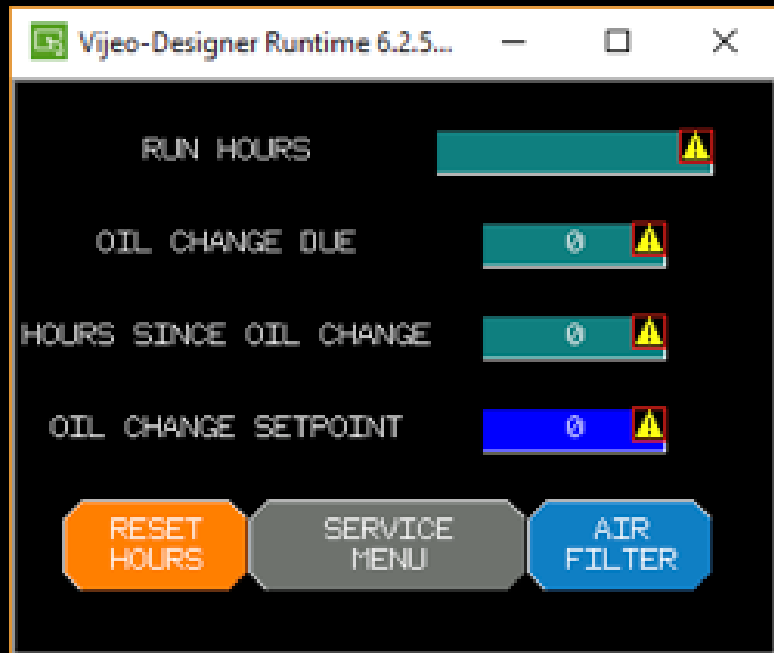
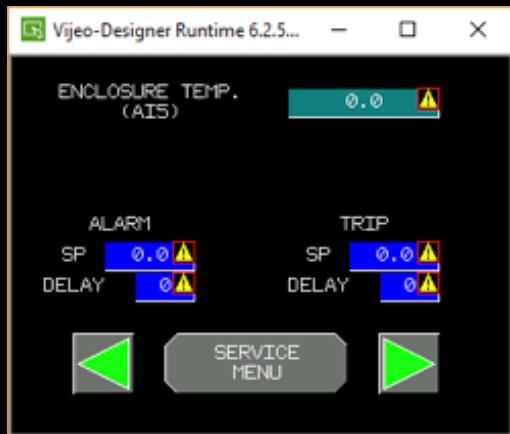
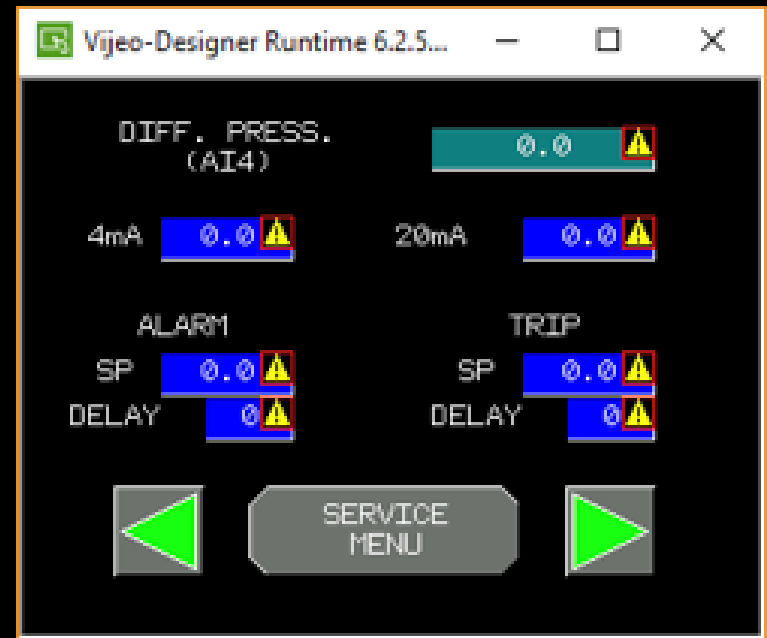
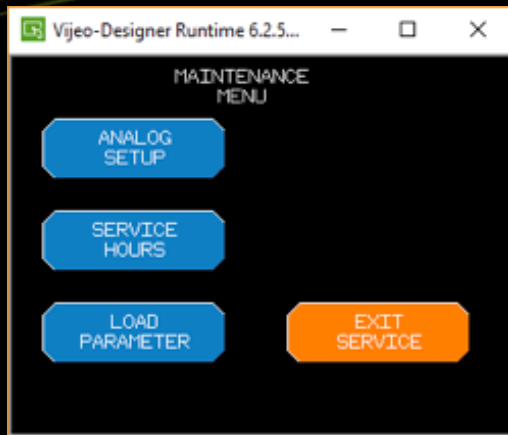
LOCAL CONTROLS HMI LCD

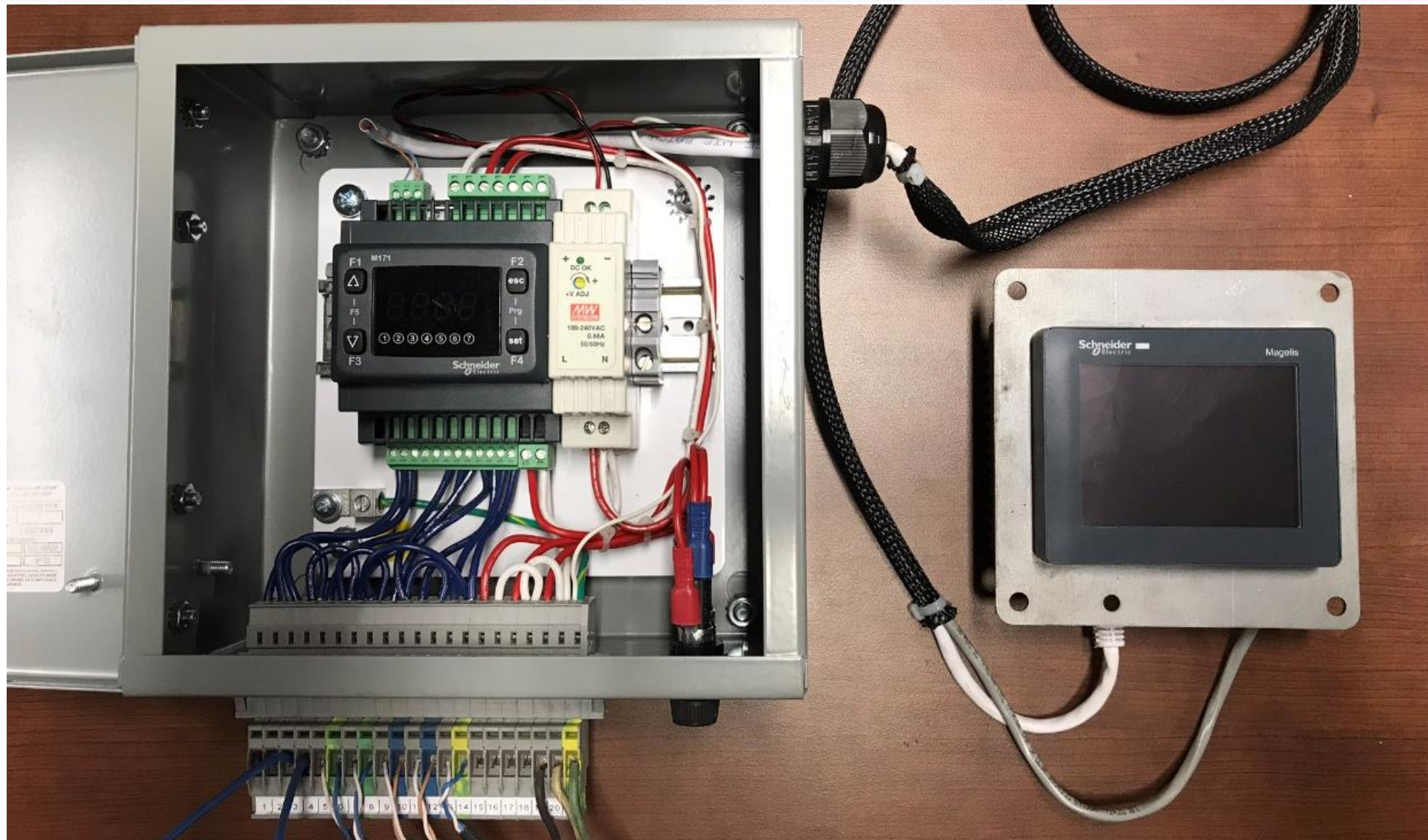
- Blower Start/Stop
- Run Hours/Service Hours
- Discharge, Ambient & Enclosure Temp
- Inlet Differential & Discharge Pressure
- Alarm & Trip Set Points
- User & Password Function
- Oil & Filter Change Reminders

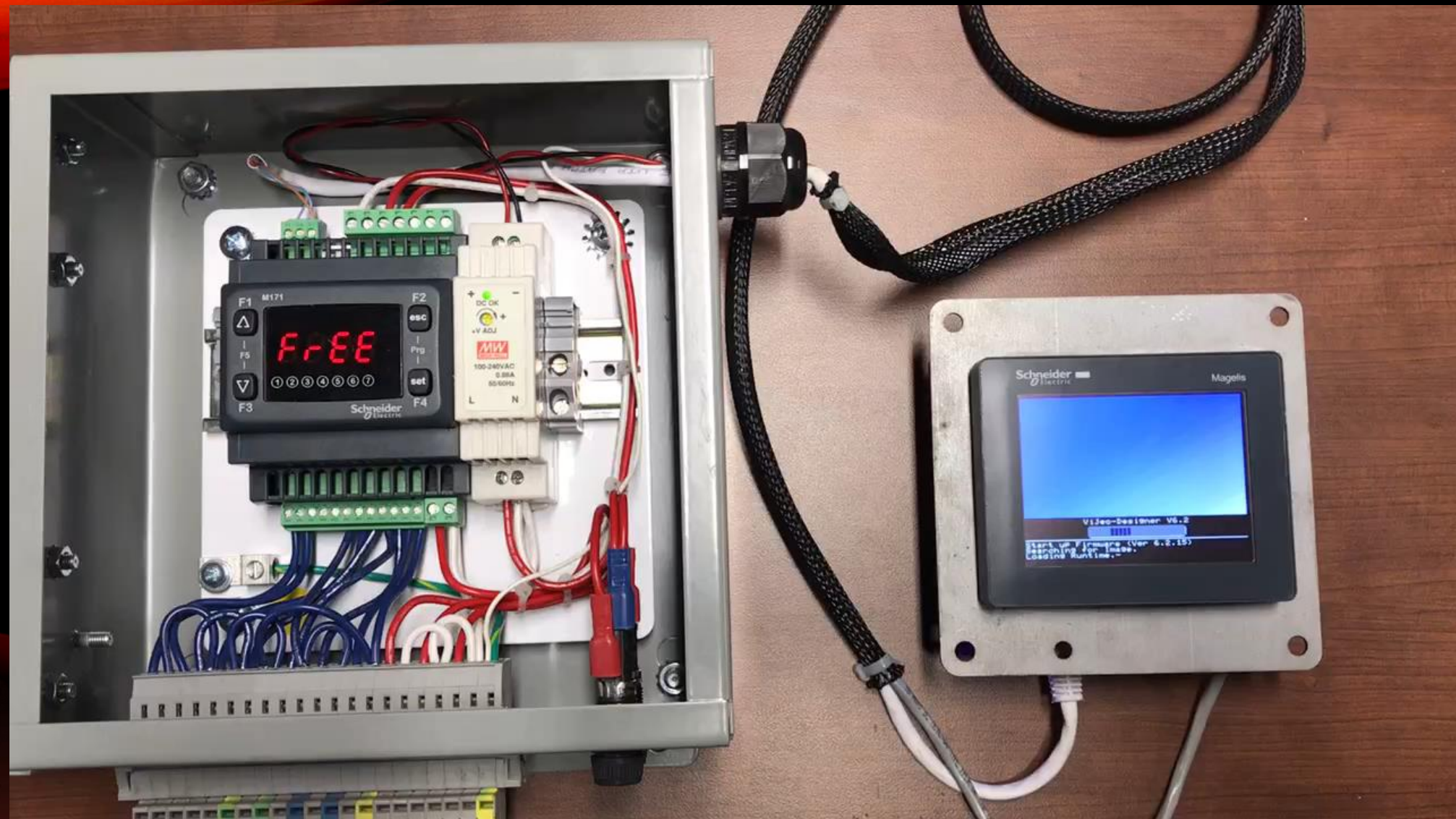










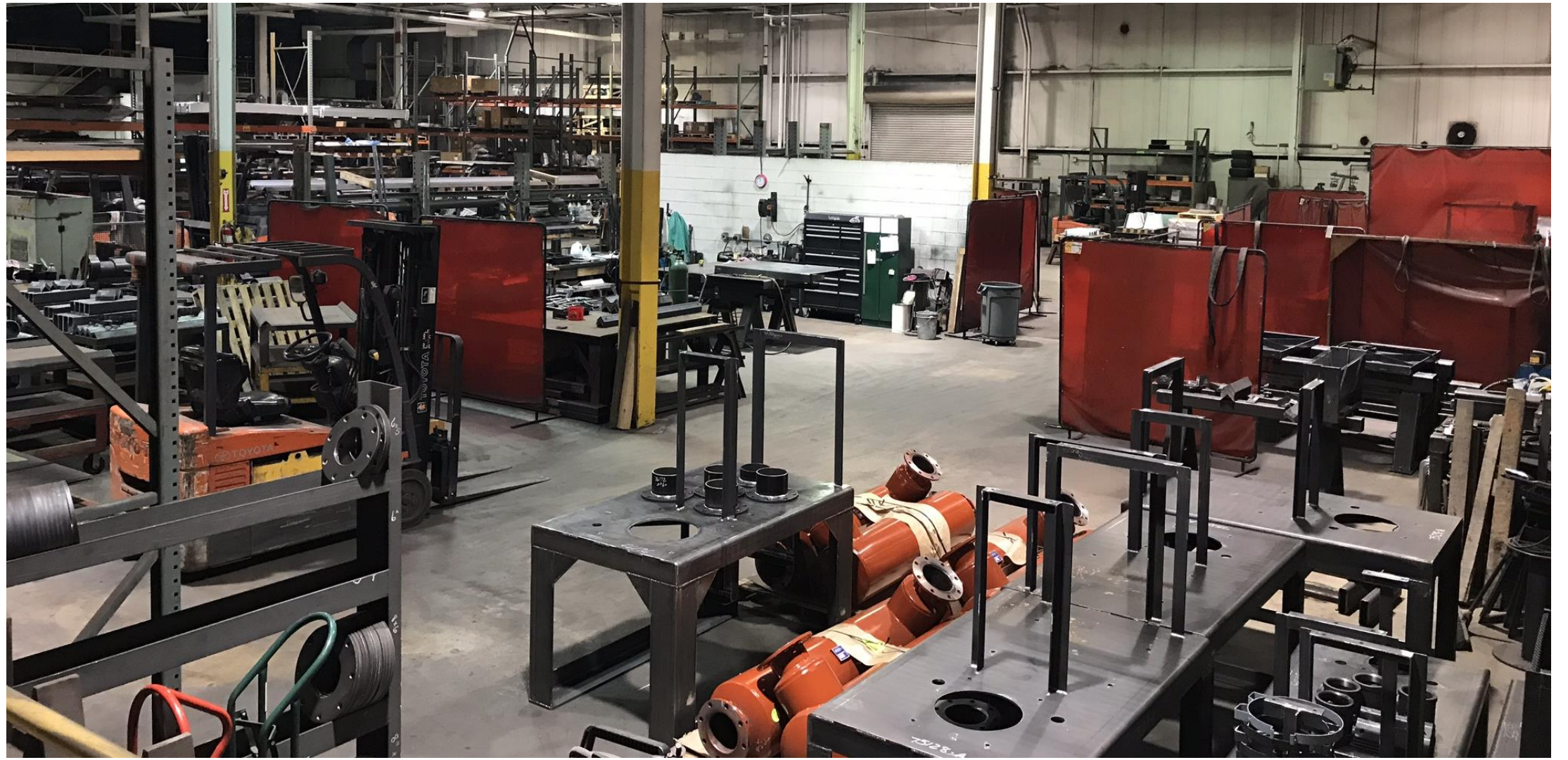


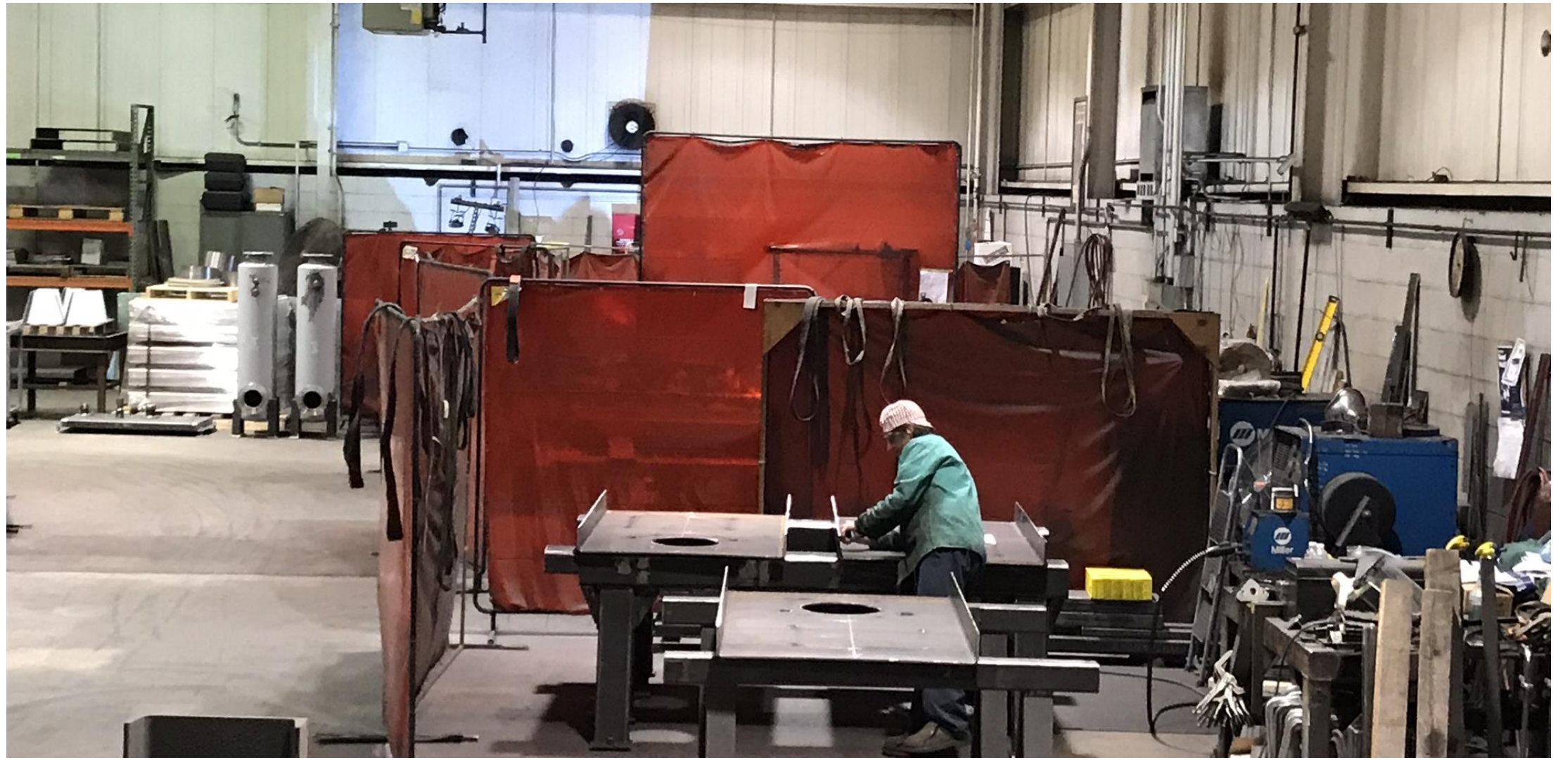


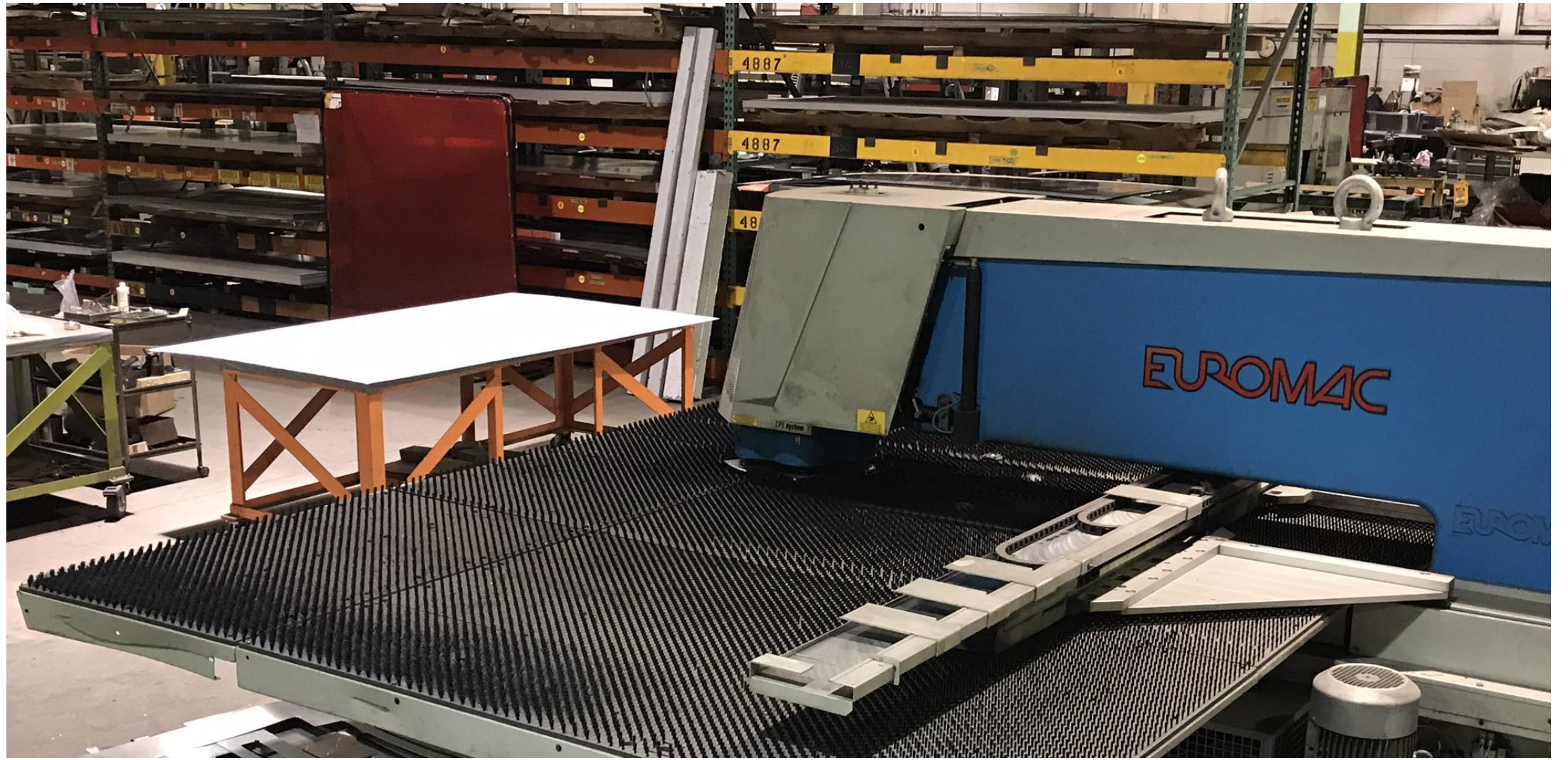
EXCELSIOR SHOP TOUR



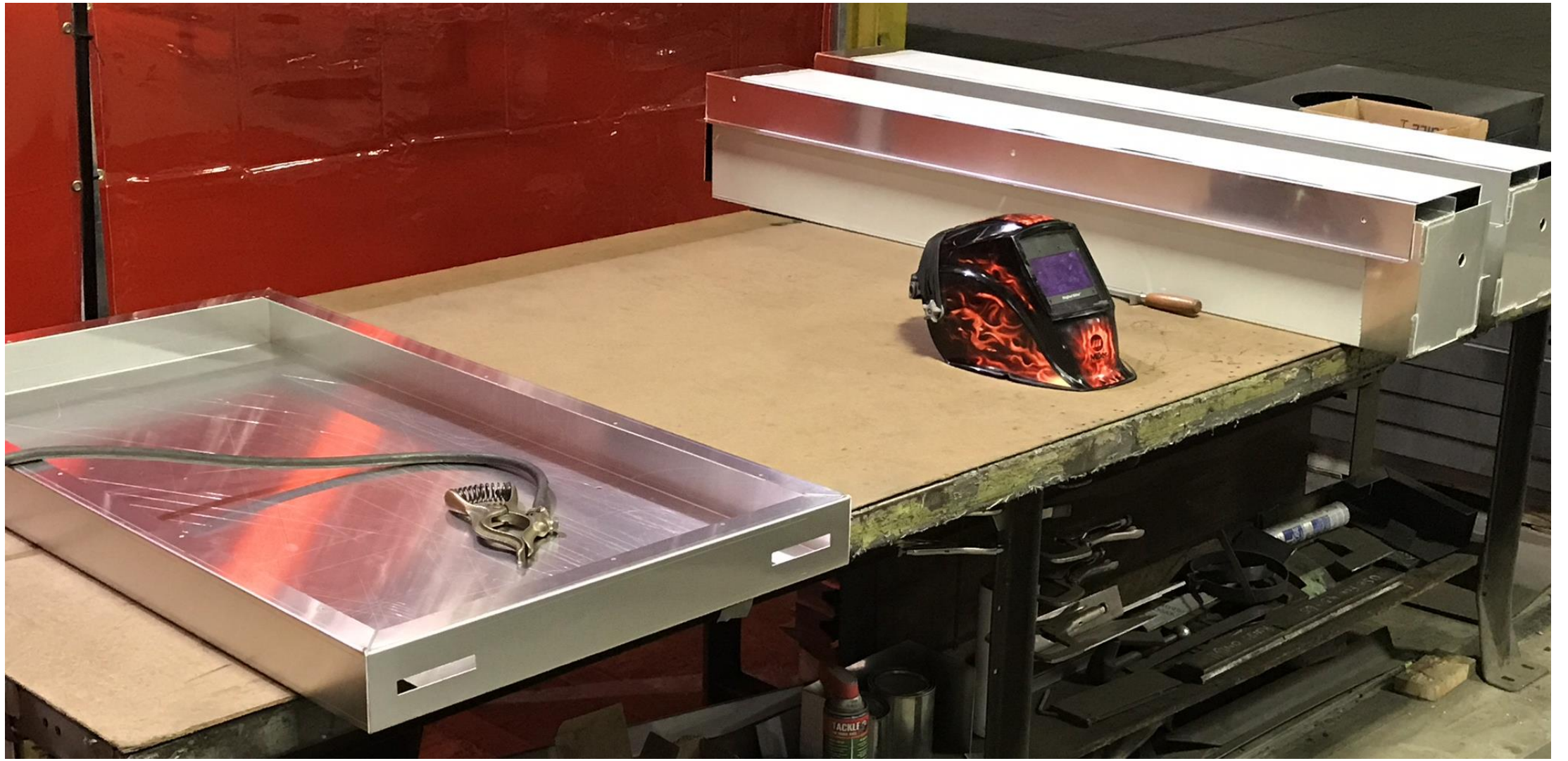










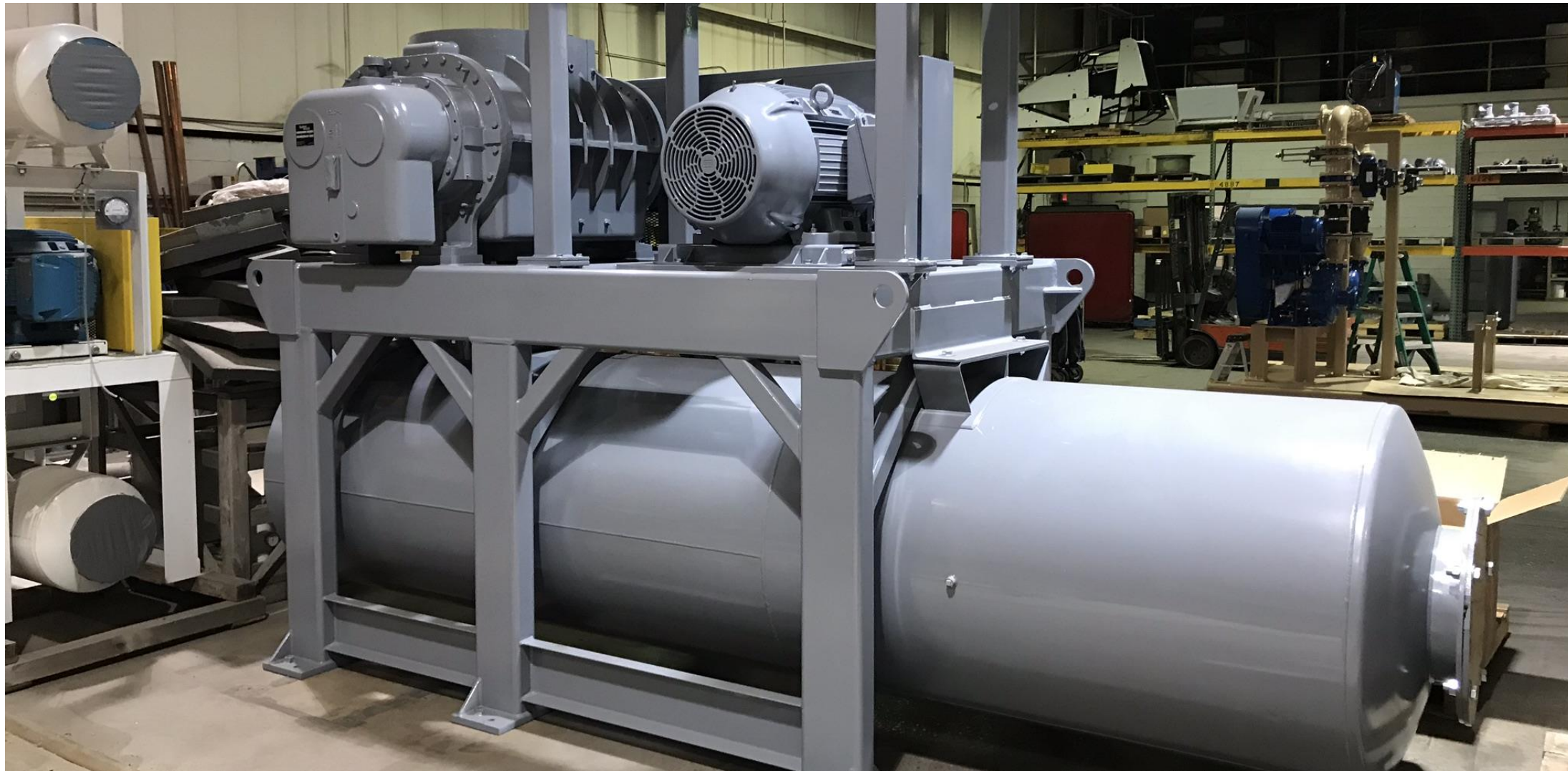




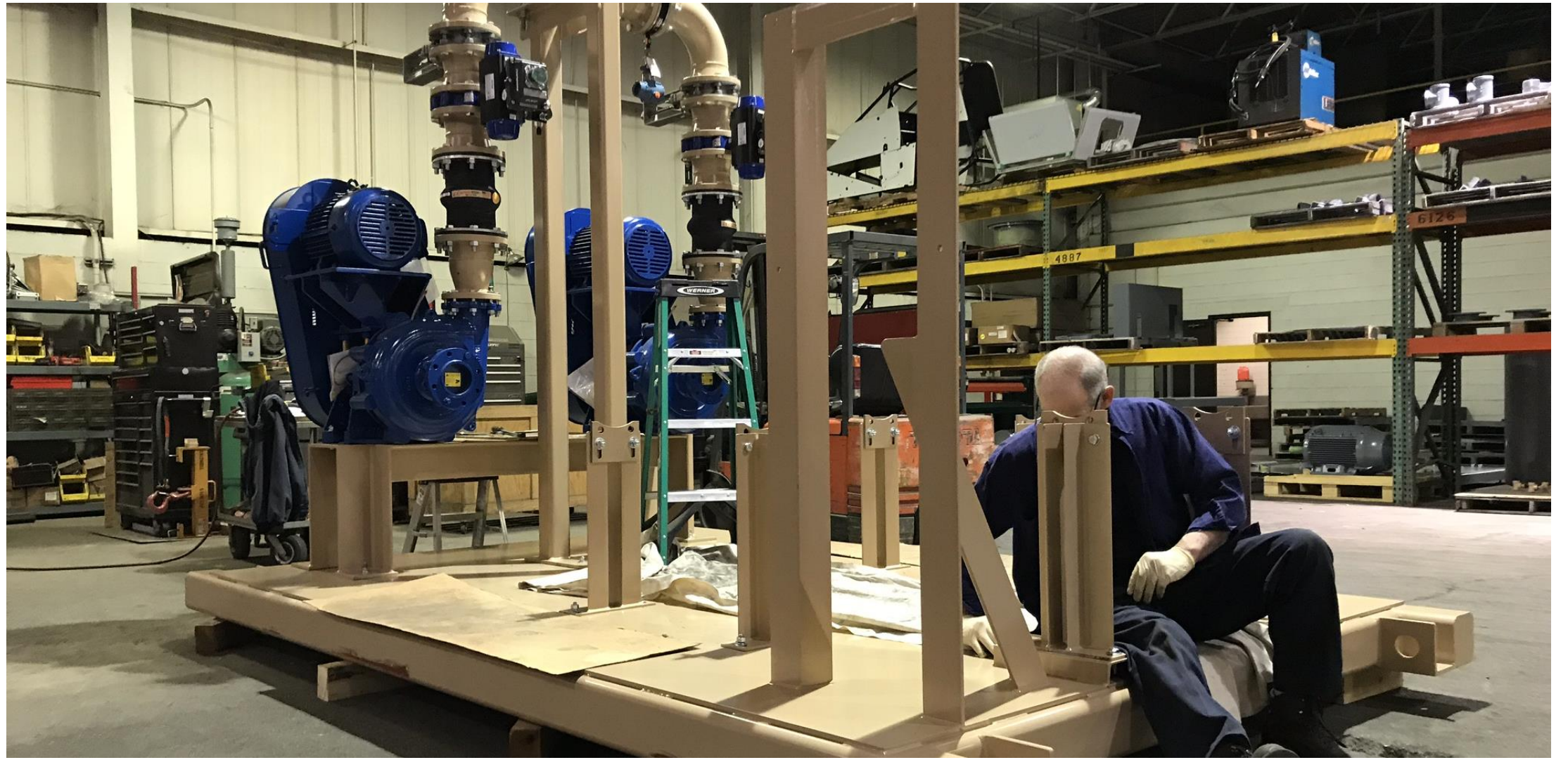
NOTICE
SAFETY GLASSES
REQUIRED

COMAR

Gardner
Denver

















The image features a large, dark grey industrial blower system mounted on a sturdy metal frame. The blower has a prominent circular fan grille on the right side and a control panel on the left. The metal frame has the 'EBS EXCELSIOR BLOWER SYSTEMS' logo printed on it. The background is a plain, light grey color. Overlaid on the image are several vibrant, flowing, abstract shapes in shades of red, orange, yellow, green, and blue, creating a dynamic and modern aesthetic.

THANK YOU