



COORDINATING ACTIVITIES AFTER A DISASTER

**OPERATOR TRAINING COMMITTEE OF OHIO
Procrastinators Workshop
Thursday, December 10, 2015**



Role of Emergency Management

Emergency Management is an enterprise; an organization of multiple entities in a coordinated effort to address the consequences of a disaster or incident.



Emergency Management Cycle

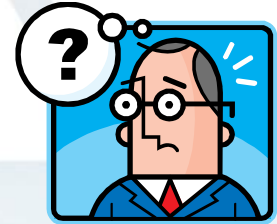


Four Phases of Emergency Management

- Mitigation
- Preparedness
- Response
- Recovery



Role of Emergency Management



What is our *response* role?

1. Alerting and notifying
2. Warning
3. Protecting citizens and property
4. Providing for public welfare
5. Restoration of services



Role of Emergency Management

Alerting and Notifying

- **Two groups of notification:**
 - **General Public**
 - **Emergency Response personnel**
- **Many methods for notifying:**
 - **Social Media; Facebook, twitter...**
 - **Television/radio**
- **Messaging**
 - **Preparatory actions**
 - **Protection measures**

Role of Emergency Management

Warning

- **Distinction from notification:**
 - Immediate danger
 - Protective action required
- **Methods for warning:**
 - National Weather Service
 - Emergency Alert System
 - Out-door Warning Sirens
- **Messaging**
 - Immediate actions to preserve life and property





Role of Emergency Management

Protecting Citizens and Property

- Protection of life safety, property, environment & economy.
- Actions taken by emergency responders within the EM system
 - Emergency response (fire, law enforcement, emergency medical)
 - Evacuation
 - Rescue operations
 - Preventative measures (sandbagging)



Role of Emergency Management

Providing for Public Welfare

- Caring for people during and immediately after the emergency
- Actions taken by service agencies within EM system
 - Sheltering/just in time and long term
 - Feeding
 - Provision of essential supplies
 - Personal care kits
 - Ice/Water
 - Tarps

Role of Emergency Management

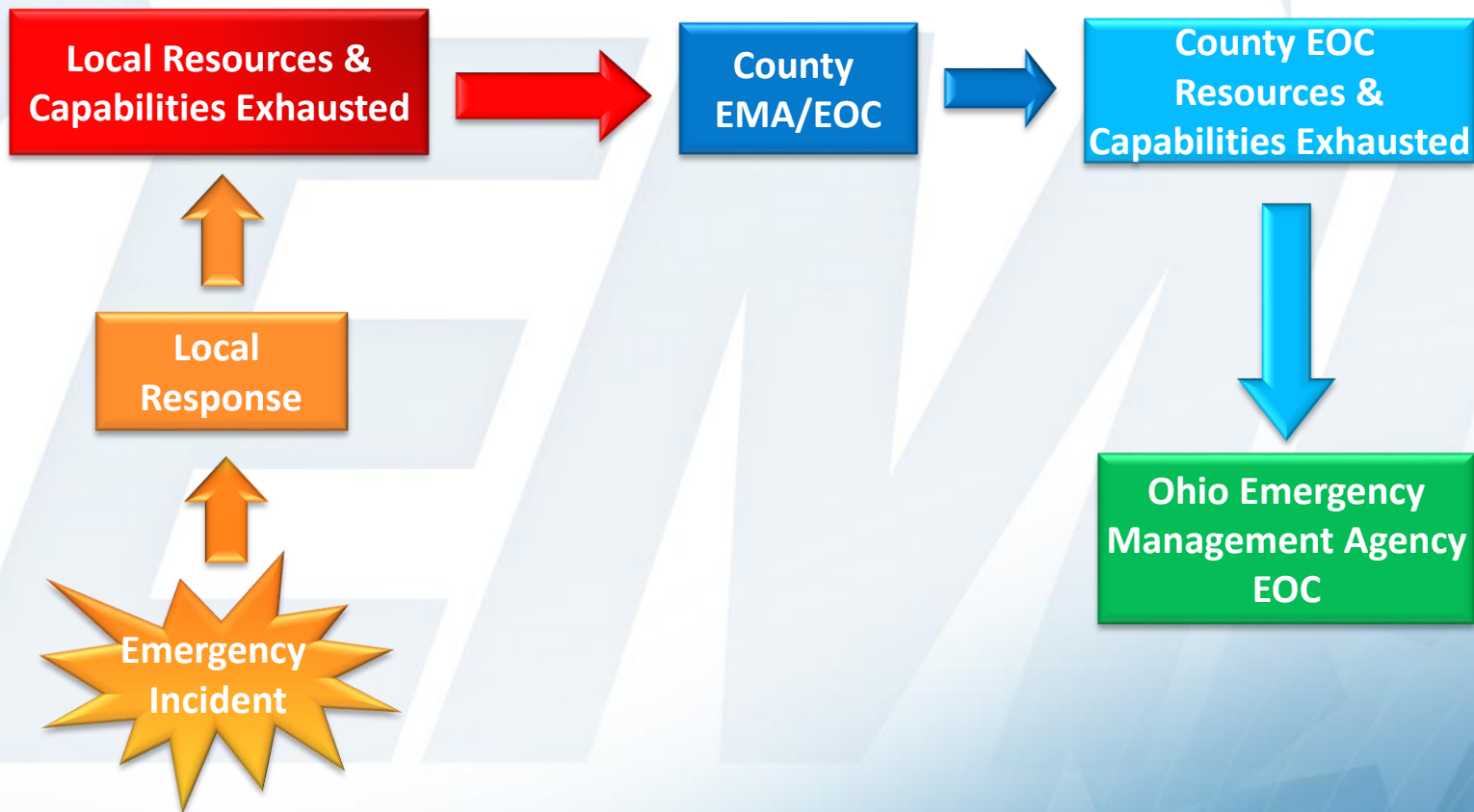
Restoration

- **Actions to repair/reconstitute essential services**
 - **Actions taken by public works and government offices within EM system**
 - **Debris removal**
 - **Transportation**
 - **Utilities**
 - **Private sector**
 - **Response and recovery interface**





Response Support





EOC/ICS Interface

Incident Command

- Conducts tactical operations on-scene
- Keeps the senior officials at the EOC informed and up to date on all important matters pertaining to the incident.



EOC/ICS Interface



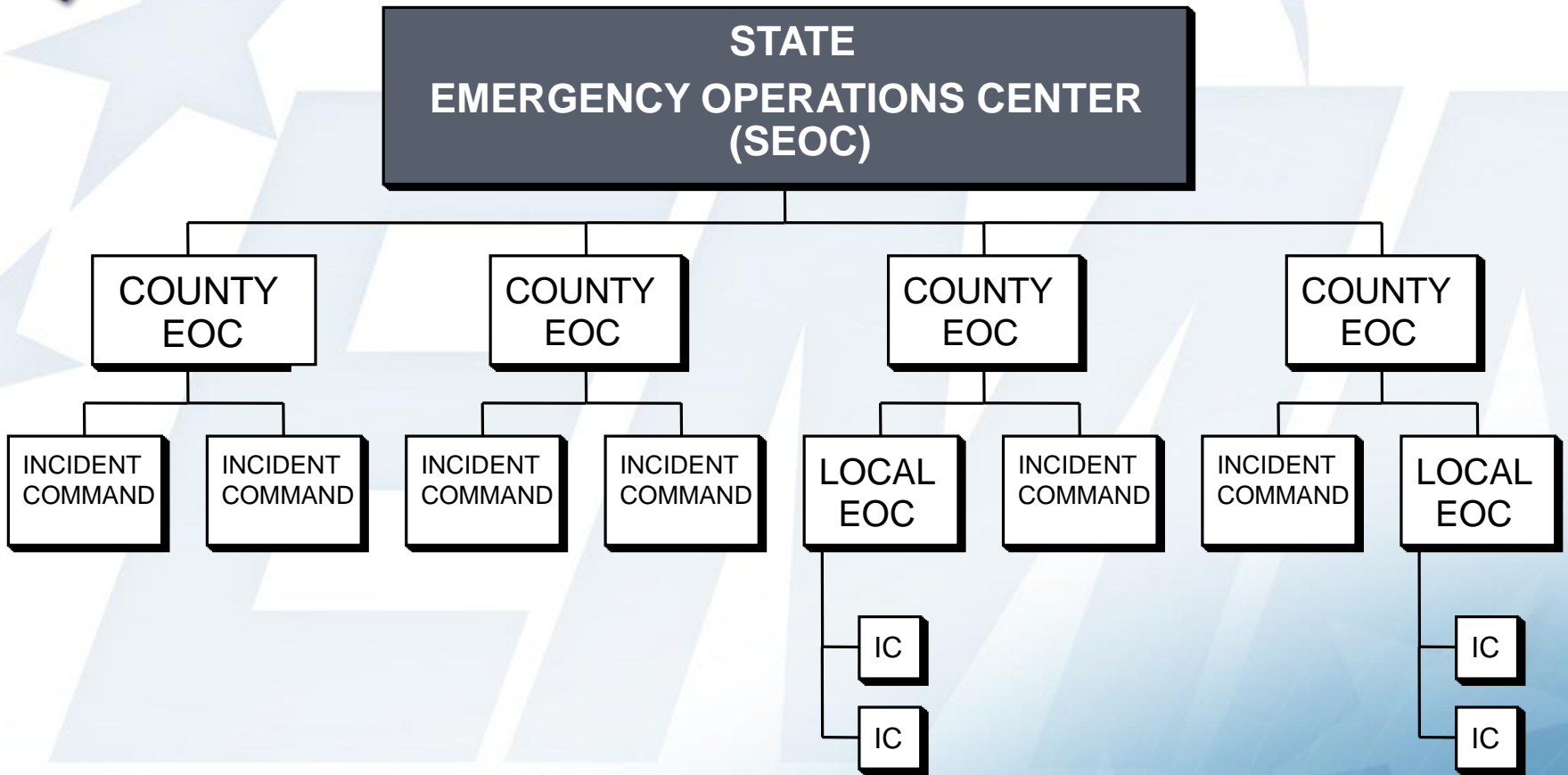


EOC/ICS Interface

- **Incident Command System (ICS) at the scene**
- **Local EOC supports ICS**
- **State EOC support local EOC**
- **FEMA Regional Operations Center (ROC) supports state EOC**



Escalation of Support





Role of Emergency Operation Center

To provide a central location where government can provide interagency coordination and executive decisionmaking in support of the incident response.

Responsibilities of Emergency Operation Center

- **Information coordination**
- **Maintains Situational Awareness**
- **Resource support and coordination.**
- **Priority setting/decision making**
- **Documents administrative and financial actions**
- **Coordinates emergency and disaster declarations**





Information Coordination

- **Situational Awareness**
 - What has happened?
 - What is happening now?
 - What is likely to happen next?
 - What factors affect the response?
 - What resources are needed and available





Information Coordination

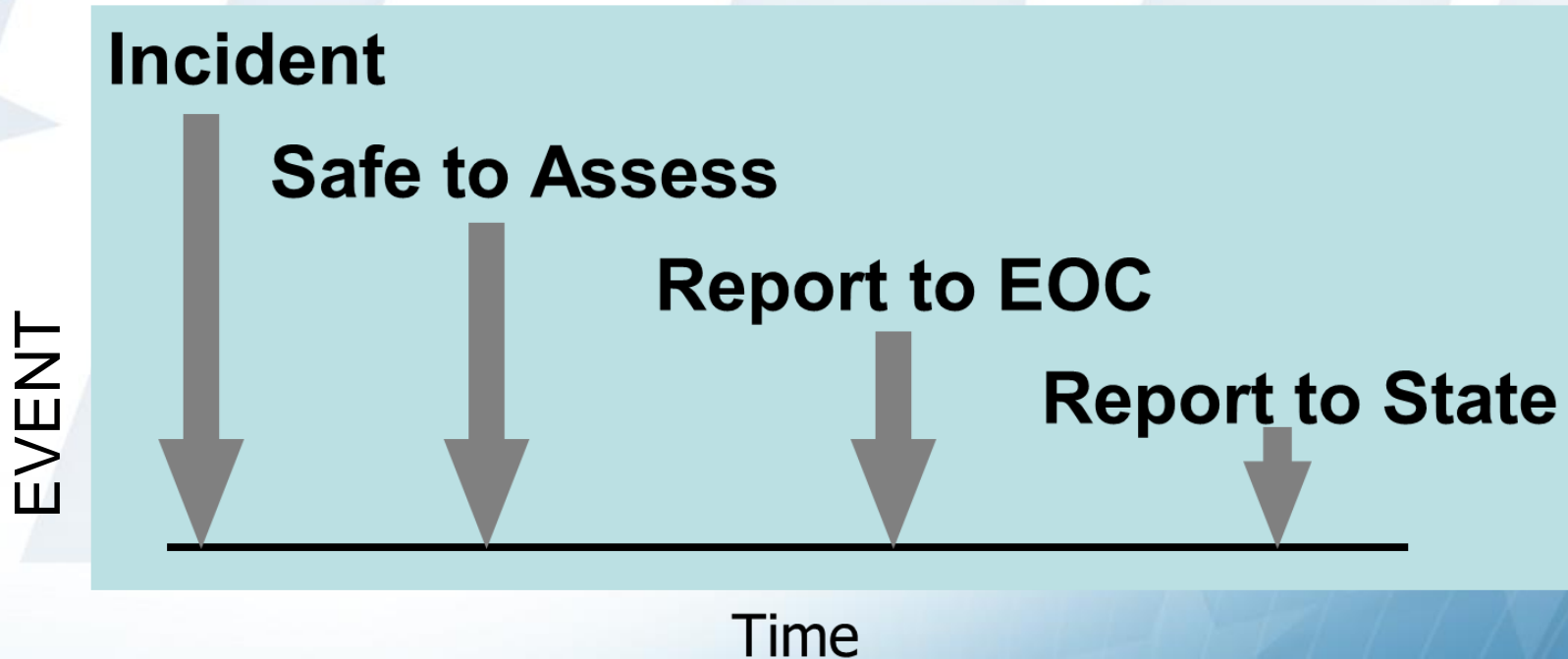
Rapid Assessment

- **Rapid Needs Assessment is not a complete damage assessment.**
- **Focus on issues related to life sustaining or life saving needs and operations.**
- **In addition, other areas that are known to be problematic must be included in the process.**



Information Coordination

Rapid Assessment





Information Coordination

How information flows:

- **Local flow of information from IC/Responders to EOC**
- **Local EOC information to State EOC**
 - WebEOC
 - Phone/Email
- **State EOC information to ESF partners**



Information Coordination

Information Support:

- **State EOC information to county directors**
 - Conference calls
 - Meeting notes
- **State EOC information to elected officials**
 - Situation Reports
- **State EOC information to public**
 - Social media
 - Press releases



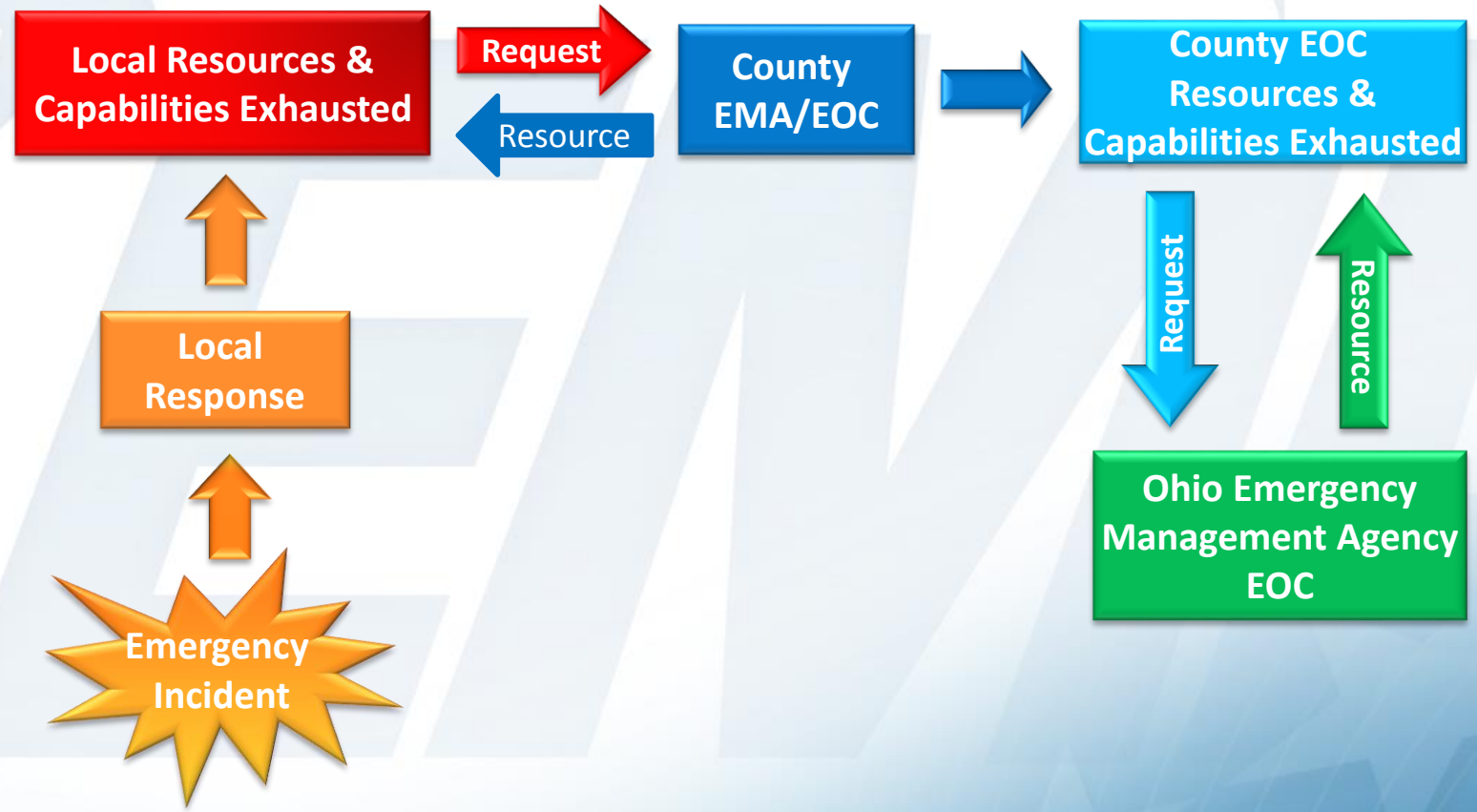
Resource Coordination

What is a resource?

- **Something that can be used to support or assist a responding entity**
- **An available supply that can be drawn on when needed**
- **Tools to deal with difficult or troublesome situations effectively**



Resource Support





Resource Coordination

How Resources are Requested

- Local entity requests through County EOC
- County requests mission through State EOC
- State EOC coordinated among state partners for capabilities
- State procures resources if not available within state agencies.



Emergency Operations Plan

- **Framework for state response**
- **15 Emergency Support Functions**
 - Each has primary state agency
 - Addresses state response to missions
- **9 Annexes**
 - Functional
 - Support
 - Incident Specific



Emergency Support Functions

- **ESF 1 - Transportation**
- **ESF 2 - Communications**
- **ESF 3 - Engineering & Public Works**
- **ESF 4 - Fire Fighting**
- **ESF 5 - Information & Planning**
- **ESF 6 - Mass Care**
- **ESF 7 - Resource Support & Logistics**
- **ESF 8 - Public Health & Medical Services**
- **ESF 9 - Search & Rescue**
- **ESF 10- Hazardous Materials**
- **ESF 11- Agriculture**
- **ESF 12- Energy**
- **ESF 13- Law Enforcement**
- **ESF 14- Community Recovery and Mitigation**
- **ESF 15- Emergency Public Information & External Affairs**



Mission Request – Water

- Potable water mission received
- Mission coordinated among ESF 3 (DNR & EPA), ESF 4, ESF 7 (DAS) & ESF 8 (ODH)
 - ESF 3 Restoration of the critical service (ODNR/EPA)
 - ESF 3 Contaminated water supply (EPA)
 - ESF 4 Water Shuttle for Fire Suppression
 - ESF 7 Acquisition
 - ESF 8 Private water sources
 - ONG water production capabilities



Resource Coordination

The Cost of a Resource

- Costs associated with a resource are often overlooked by the requesting entity.
- If Local EMA requests it, they are responsible to pay or transfer the cost to the requesting entity.
- If the state requests it on your behalf and it has a cost, most likely you will be responsible for the bill.



Escalation of Response



Escalation of Response

- **Local Response**
 - **Local Emergency Declarations**
- **State Response**
 - **Disaster Declaration**
- **Federal Response**
 - **Federal Emergency/Disaster Declaration**



Local Response

- **Local jurisdictions response through fire, law enforcement, emergency medical, etc.**
- **Regional mutual aid**
- **Use of public/private partnerships**
- **State-wide mutual aid systems**
 - **Fire Response Plan**
 - **Law Enforcement Response Plan**
 - **Ohio's intrastate mutual aid compact**
 - **Ohio WARN**



Local Declaration

- **What does a local declaration of emergency do for you?**
 - **Statutory impacts**
 - Eased purchase capability
 - **Public perception**
 - Government doing something in response
 - **In limited cases a requirement for funding programs**



State Response

- **State response in absence of a state declaration is limited to statutory authorities**
 - **ODOT on state routes**
 - **OSHP performing LE responsibilities**
 - **ODNR watercraft performing water rescue**
 - **Ohio EPA technical assistance**
 - **ONG 52nd Civil Support Team (hazmat)**
 - **Ohio EMA provision of sandbags and plastic**

State Declaration

- **What does a state declaration of emergency do for you?**
 - **Statutory impacts**
 - **Public perception**
 - Government doing something in response
 - **A requirement for some funding programs**
 - **Allows state agencies to expand response beyond statutory limitations**
 - ODOT on county/township routes
 - Guard activation





Federal Declaration

- **State requests Emergency or Disaster Declaration through FEMA to the White House.**
 - Funding mechanisms
 - Direct federal assistance



Thank You!

Additional Questions/Comments?

<http://ema.ohio.gov/>

Andrew D. Elder | Preparedness Branch Chief

614-889-7178

adelder@dps.ohio.gov