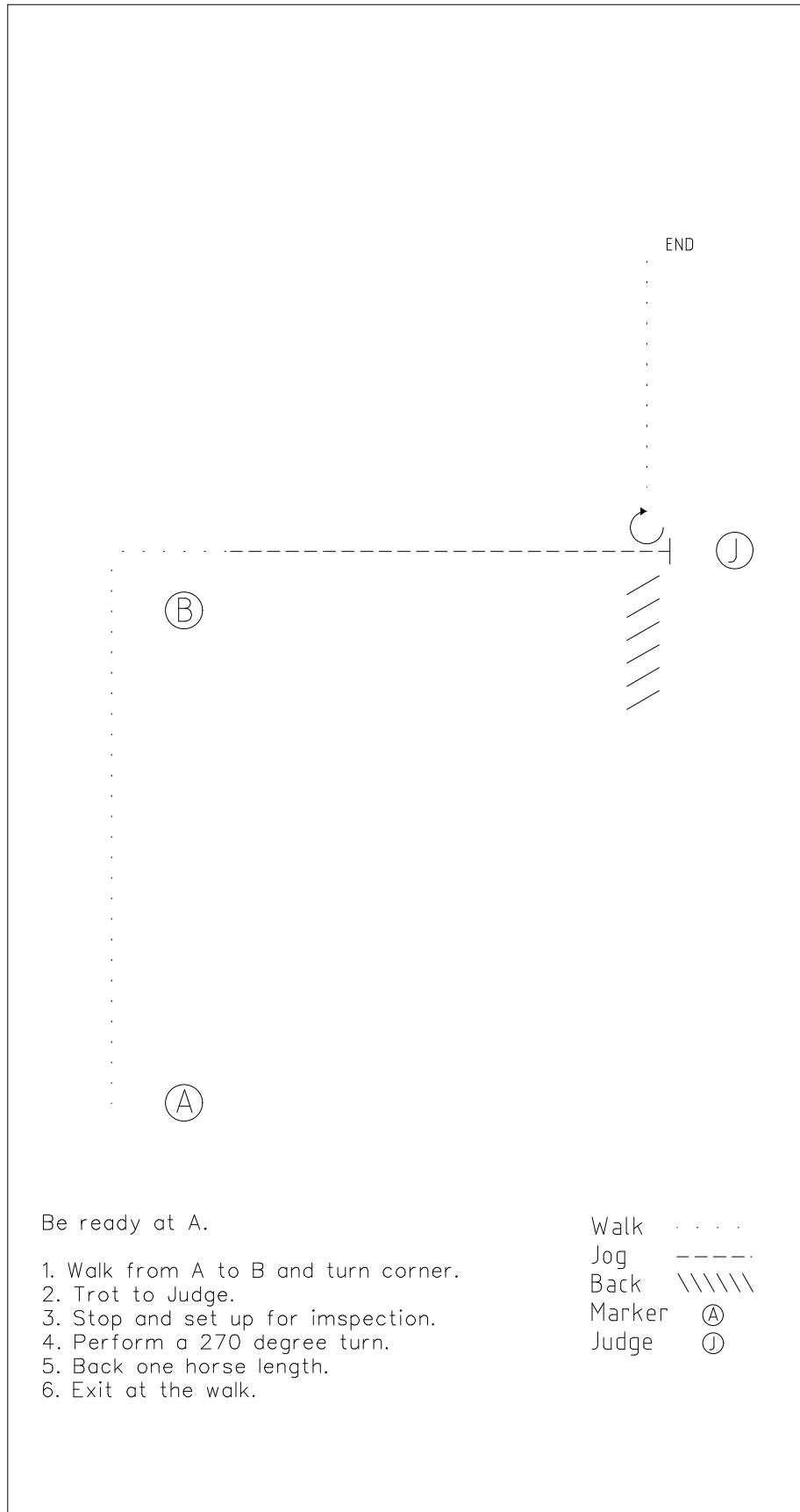
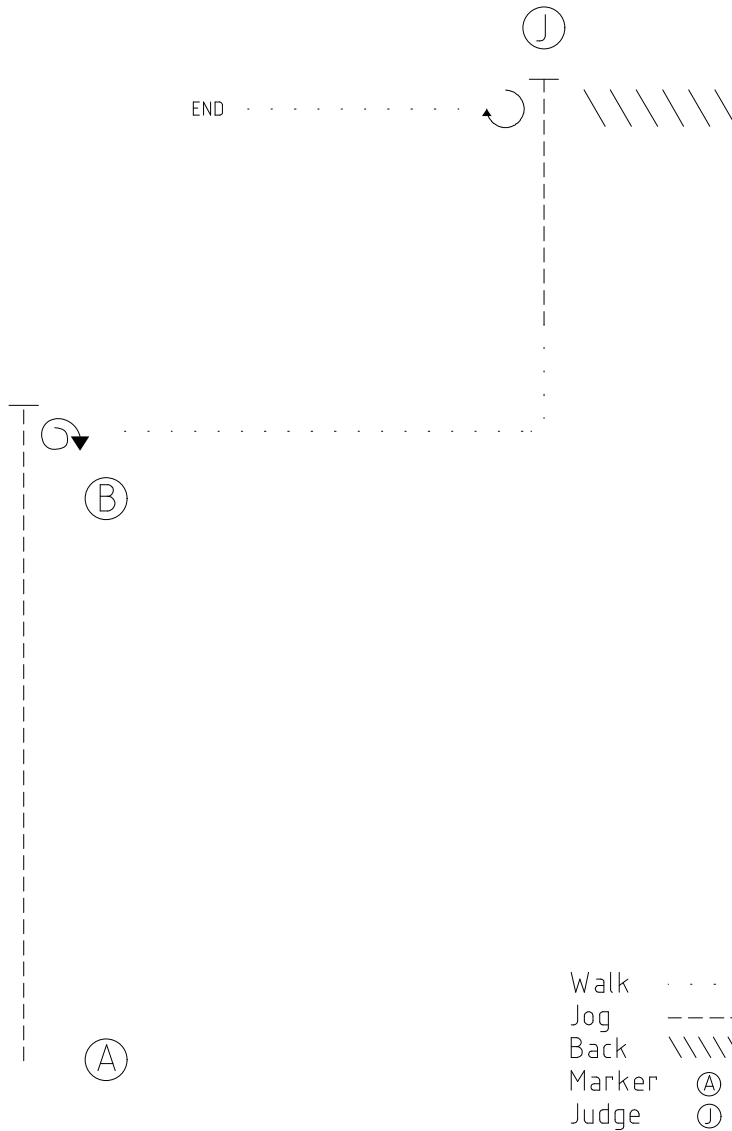


BRIDLE PATH STABLES HORSE SHOW WALK/JOG, GREEN SHOWMANSHIP



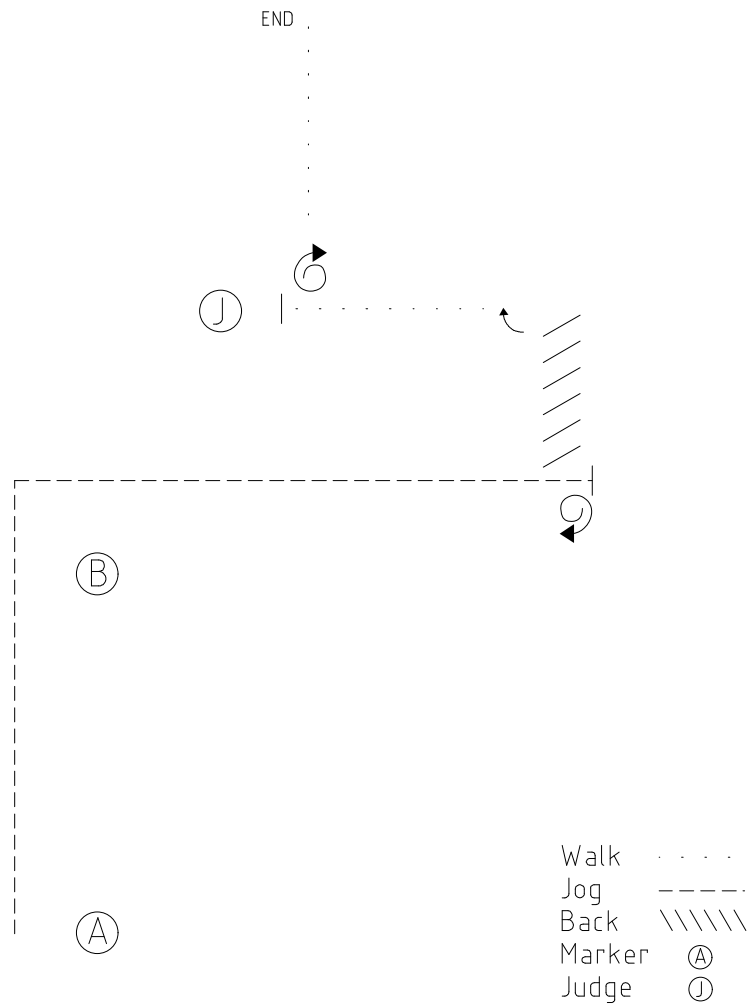
BRIDLE PATH STABLES HORSE SHOW JUNIOR, SENIOR SHOWMANSHIP



Be ready at A.

1. Trot from A to B and stop just past B.
2. Perform a 450 degree turn and proceed at the walk.
3. Turn a corner to the left when even with Judge, trot to Judge.
4. Halt and set up for inspection.
5. Perform a 270 degree turn and back one horse length.
6. Exit at the walk.

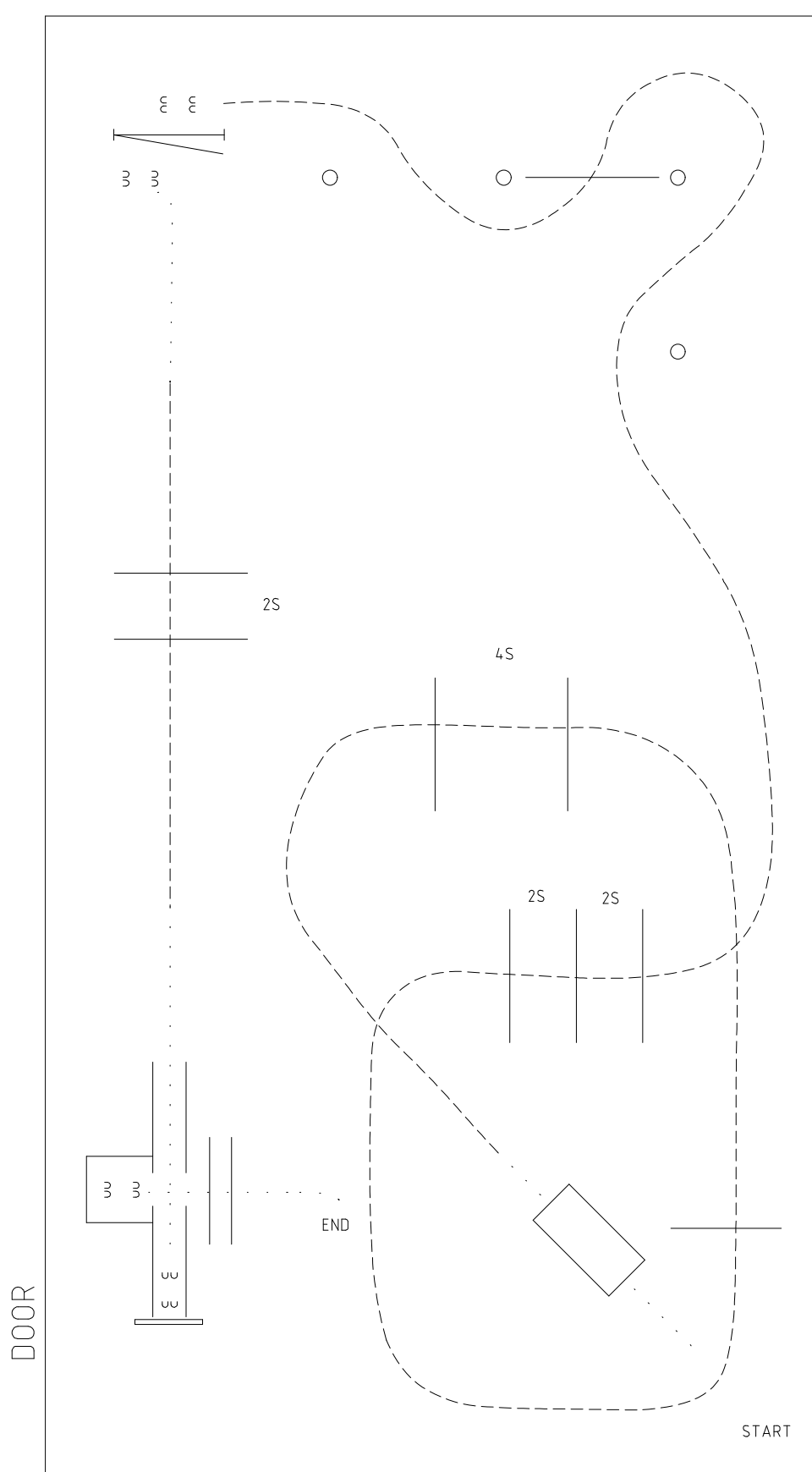
BRIDLE PATH STABLES HORSE SHOW OPEN SHOWMANSHIP



Be ready at A.

1. Trot from A to B and perform a corner to the right at B.
2. Continue past Judge as shown.
3. Halt and perform a 450 degree turn.
4. Back until even with Judge and perform a 90 degree turn.
5. Walk to Judge.
6. Halt and set up for inspection.
7. Perform a 450 degree turn and exit at the walk.

BRIDLE PATH STABLES HORSE SHOW WALK/JOG TRAIL



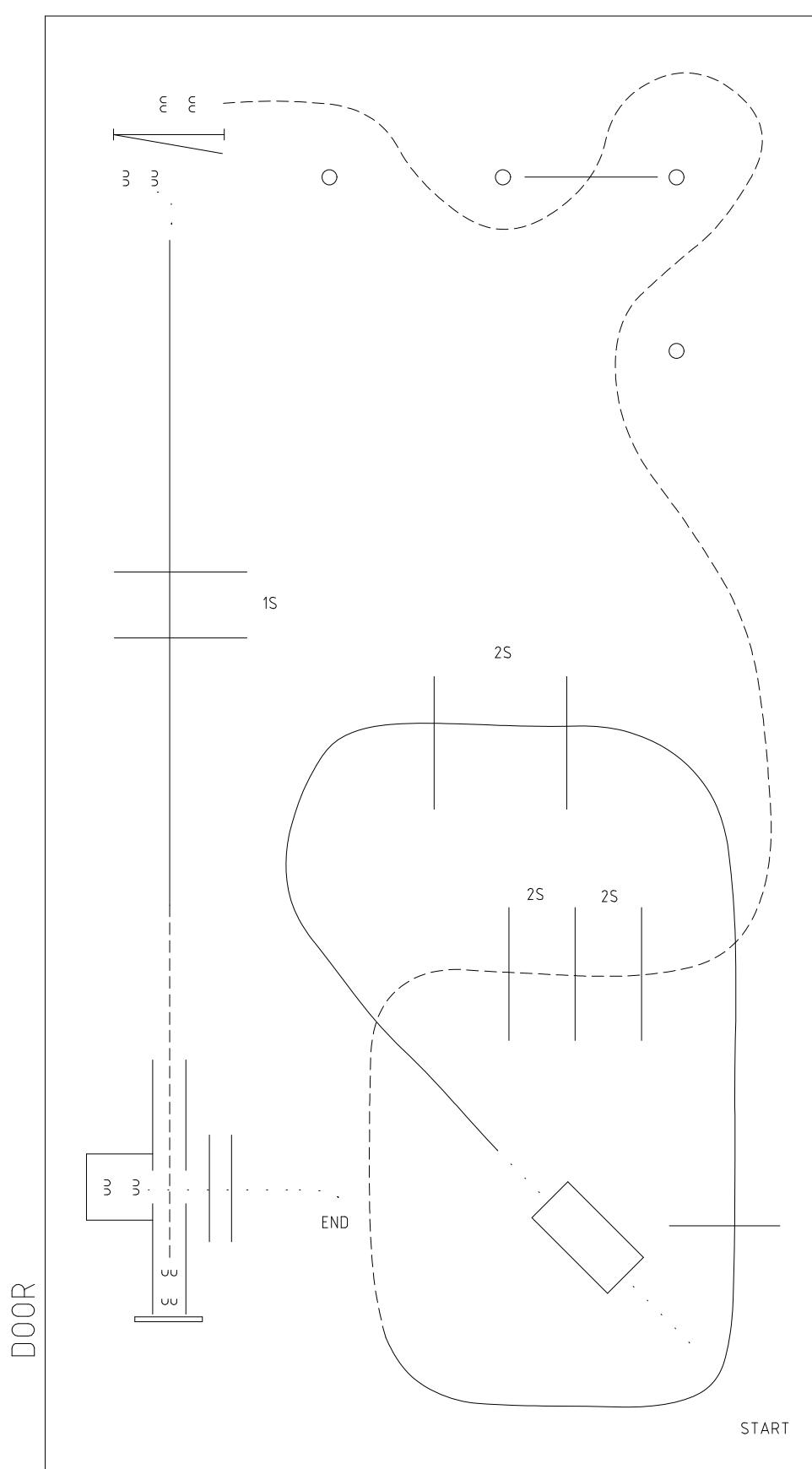
WALK/JOG TRAIL

Be ready at Start.

1. Walk over bridge.
2. Jog right lead over double poles, continue jogging right over set of single poles overs.
3. Proceed as shown.
4. Jog the weave, jog to gate, and halt.
5. Work gate with left hand.
6. Walk forward, transition to jog before poles, jog poles.
7. Break to walk, walk into chute and halt.
8. Back into box and hesitate.
9. Proceed at the walk as shown over poles.

Pattern is complete.

BRIDLE PATH STABLES HORSE SHOW GREEN TRAIL



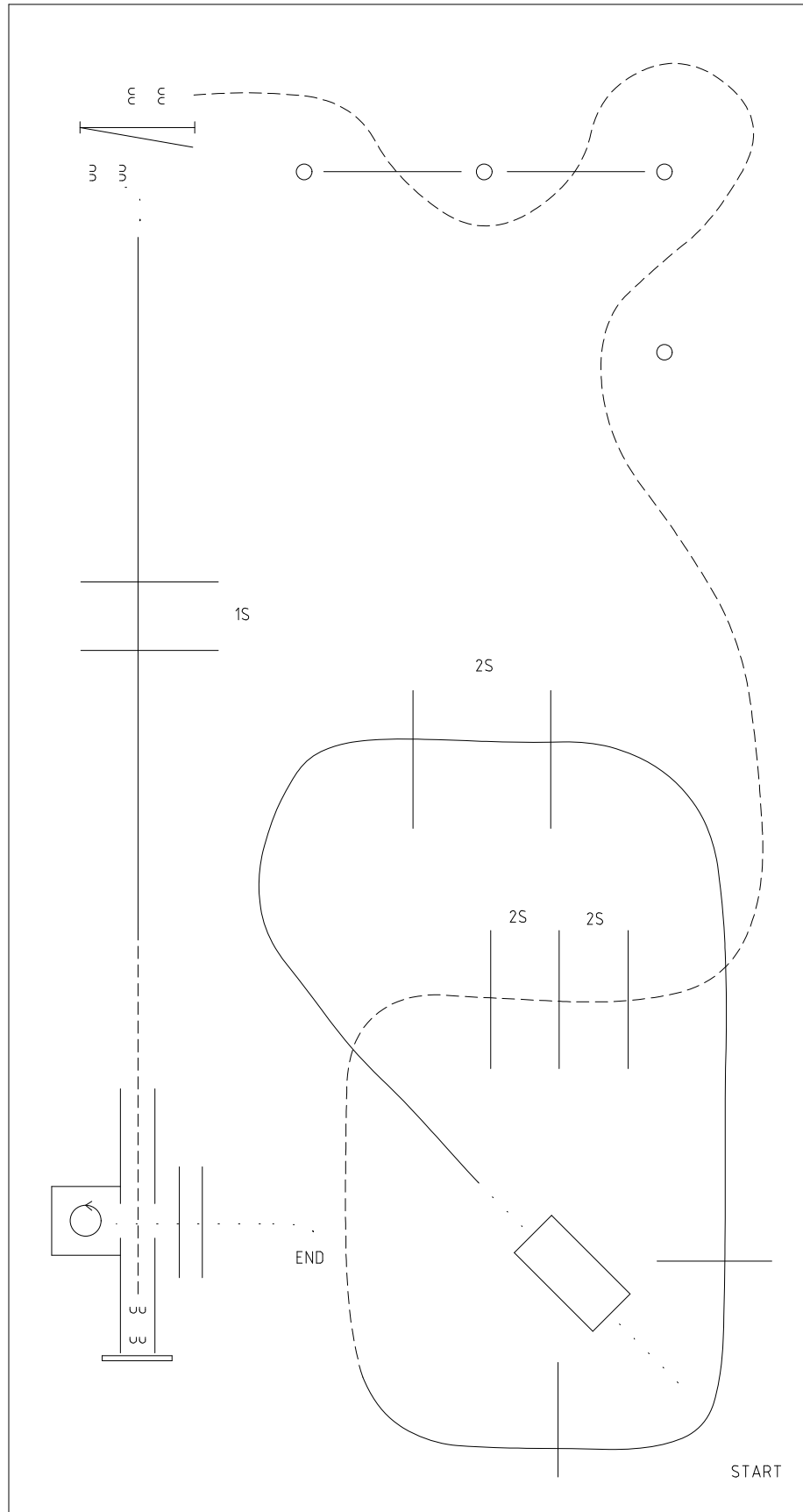
GREEN TRAIL

Be ready at Start.

1. Walk over bridge.
2. Lope right lead over double poles, continue loping right over set of single lope overs.
3. Break to jog and proceed as shown.
4. Jog the weave, jog to gate, and halt.
5. Work gate with left hand.
6. Initiate motion, lope left lead over single lope overs.
7. Break to jog, jog into chute and halt.
8. Back into box and hesitate.
9. Proceed at the walk as shown over poles.

Pattern is complete.

DOOR



JUNIOR, SENIOR TRAIL

Be ready at Start.

1. Walk over bridge.
2. Lope right lead over double poles, continue loping right over set of single lope overs.
3. Break to jog and proceed as shown.
4. Jog the weave, jog to gate, and halt.
5. Work gate with left hand.
6. Initiate motion, lope left lead over single lope overs.
7. Break to jog, jog into chute and halt.
8. Back into box, pivot 360 degrees either direction.
9. Proceed at the walk as shown over poles.

Pattern is complete.

A complex line drawing of a maze. The maze features a central rectangular area labeled "END" with a small circle inside. The maze is composed of solid and dashed lines. The word "START" is at the bottom right, and "END" is at the top left. The maze includes several dead ends and paths that lead to the central "END" area. The drawing is a black and white line art illustration.

DOOR

Bridle Path Stables Summer Show
August 3rd, 2023

OPEN TRAIL

Be ready at Start.

1. Walk over bridge.
2. Lope right lead over fan, continue loping right over set of double lope overs.
3. Break to jog and proceed as shown.
4. Jog weave poles, jog to gate, and halt.
5. Work gate with left hand.
6. Initiate motion, lope left lead over single lope overs.
7. Break to jog, jog into chute and halt.
8. Back into box, pivot 360 degrees either direction.
9. Proceed at the walk as shown over poles.

Pattern is complete.

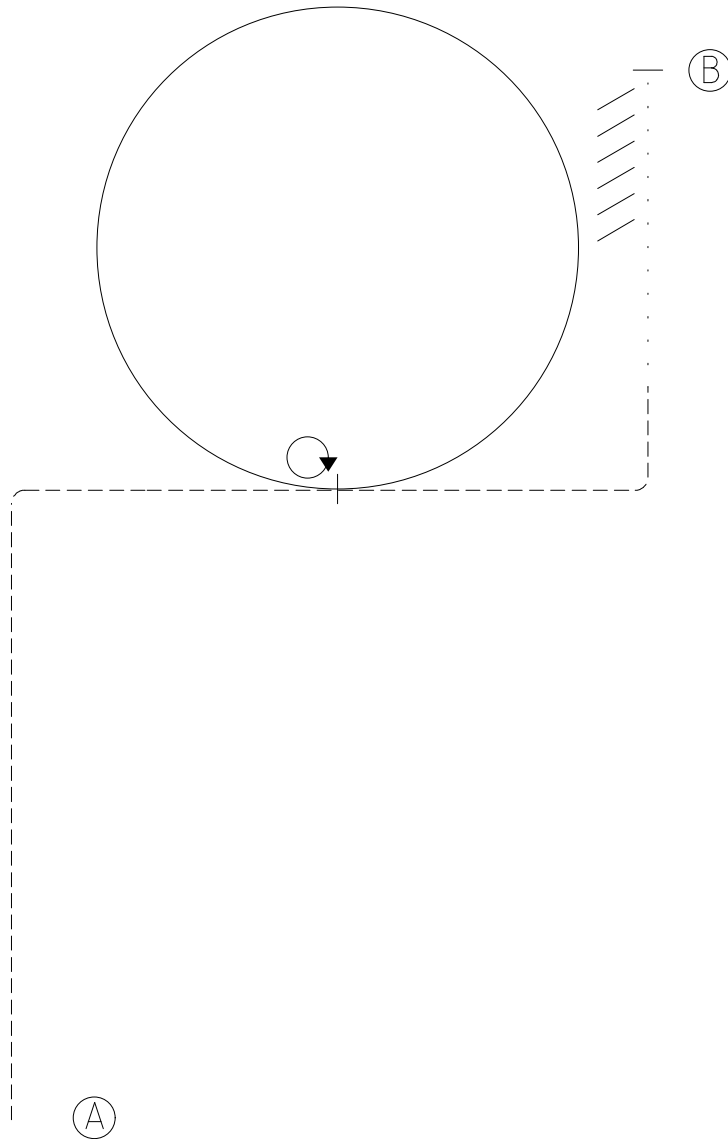
Be ready at A.

1. Walk straight forward, turn right corner as shown.
2. Jog to center of arena and jog a circle to the left.
4. Halt at centre.
5. Perform a 360 degree turn on the haunches to the left and back one horse length.
6. Jog from centre through the corner as shown, walk after the corner and proceed to B.
7. Halt at B.

Exit at the walk.

Walk
Jog	-----
Back	\\\\\\\\\\
Marker	Ⓐ

BRIDLE PATH STABLES HORSE SHOW GREEN HORSEMANSHIP



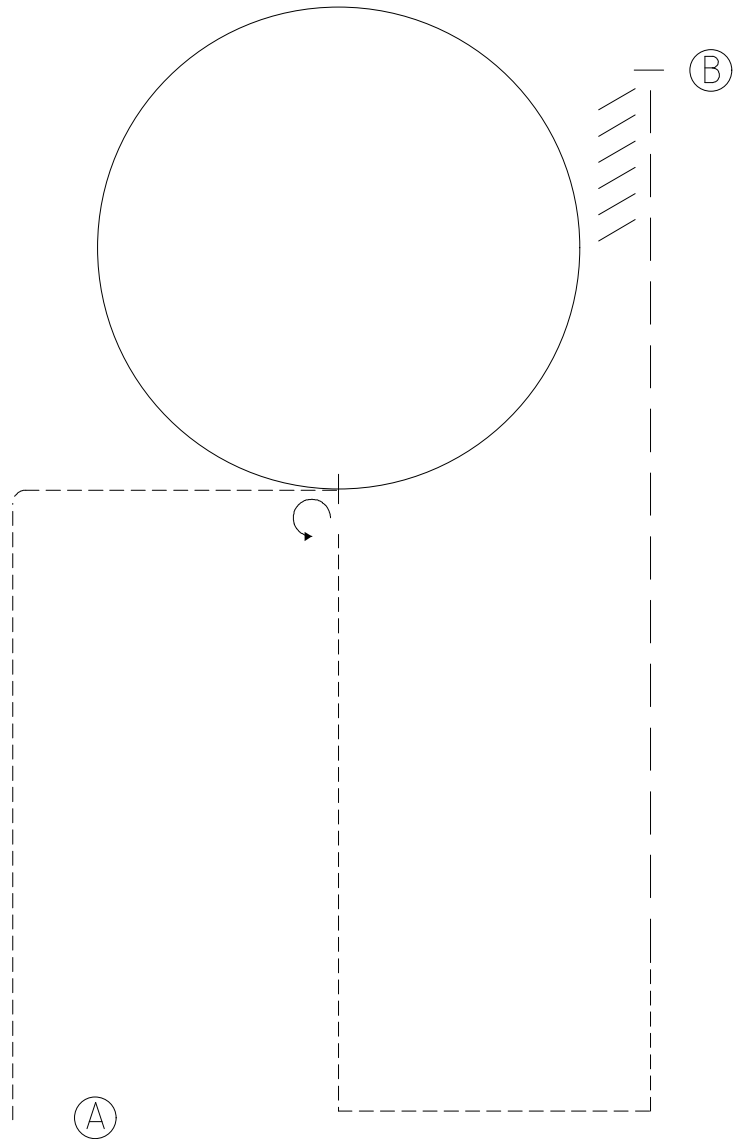
Be ready at A.

1. Jog to center as shown, halt and perform a 360 degree turn on the haunches to the left.
2. Lope a circle to the left, break to jog at centre and proceed straight forward as shown.
3. Jog a square corner and break to the walk. proceed to B.
4. Halt at B and back a horse length.

Exit at the walk.

Walk
Jog
Lope
Back \\\\\\\/
Marker (A)

BRIDLE PATH STABLES HORSE SHOW JUNIOR, SENIOR HORSEMANSHIP



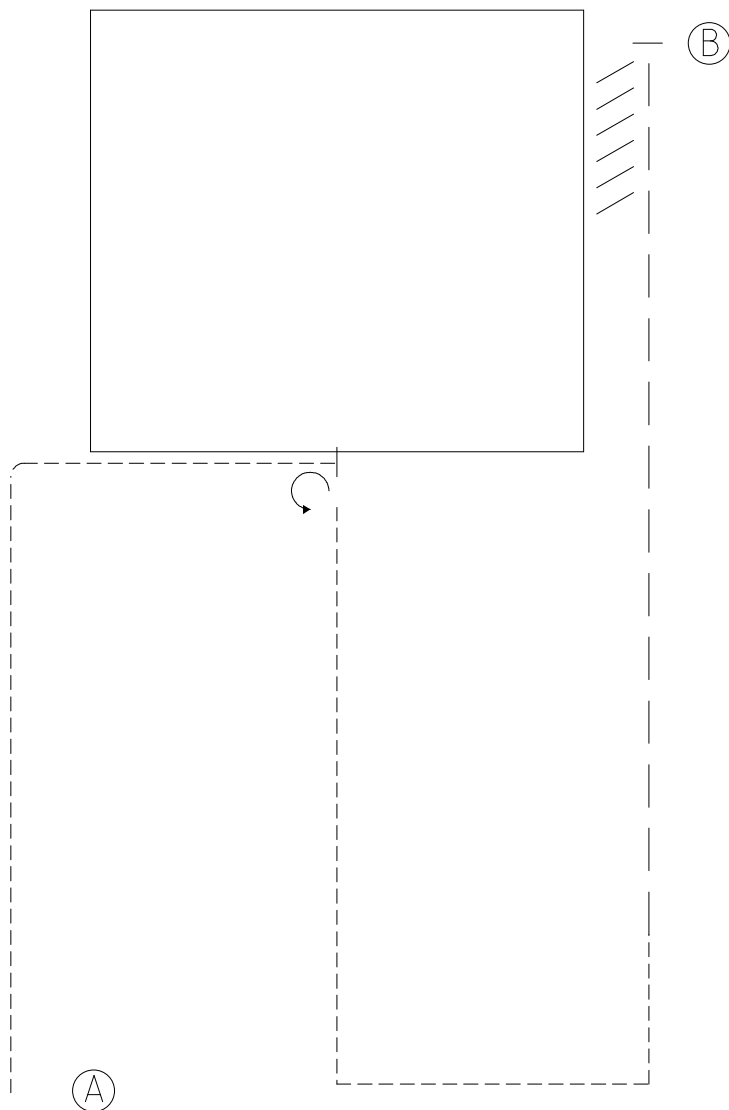
Be ready at A.

1. Jog to center as shown, lope a circle to the left.
2. Halt at the centre, perform a 270 degree turn to the left.
3. Jog down the center line, perform two square corners as shown.
4. Extend jog to B.
5. Halt at B, back a horse length.

Exit at the jog.

Walk
Jog	-----
Extended Jog	—— —
Lope	=====
Back	\\\\\\\\\\
Marker	Ⓐ

BRIDLE PATH STABLES HORSE SHOW OPEN HORSEMANSHIP



Be ready at A.

1. Jog to center as shown, lope a square to the left.
2. Halt at the centre, perform a 270 degree turn to the left.
3. Jog down the center line, perform two square corners as shown.
4. Extend jog to B.
5. Halt at B, back a horse length.

Exit at the jog.

Walk
Jog	-----
Extended Jog	—— —
Lope	=====
Back	\\\\\\\\\\
Marker	Ⓐ