

Aluminum Pole Dock Hardware

Light Weight | Will Not Rust | Extruded Strong

Side Leg Holder (46-317)
Attach legs to your dock.
Holds Legs firmly in place with
two 3/8" Stainless Bolts.



Stringer Bracket (46-810)
Use to hold together the internal
structure of your dock.

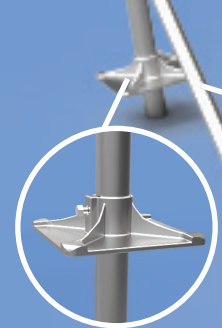
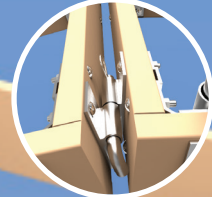


Corner Bracket (46-709)
Use Corner Brackets to reinforce
the structure of your dock.

Brace Attachment (46-586)
Attaches to Plain Corner to make a reinforced corner.
Use when your dock needs to be built strong.



Pole Dock Hinge (46-691)
Specially designed to minimize gap between docks.
Use with ramps or to attach two docks.



Large Foot Pad (46-390)
7-1/2" Foot Pad. Great for soft lake bottoms.
Allows pole to pass through pad for better anchoring.



Anti-Sway Bar
Reinforces Pole Dock Legs To Reduce Sway.
Recommended When In Water Over 4' Deep.
46-284 Anti-Sway Bar - 4' Wide
46-270 Anti-Sway Bar - 6' Wide
46-852 Anti-Sway Bar - 8' Wide



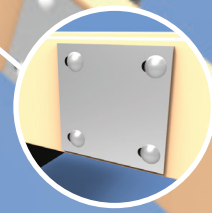
Anti-Sway Bar End (46-444)
7-1/2" Foot Pad. Great for soft lake bottoms.
Allows pole to pass through pad for better anchoring.

46-392
8'

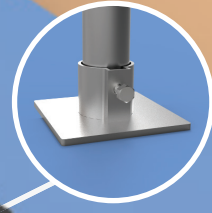
46-928
6'

46-982
4'

Aluminum Pole
1-1/2" Sched. 40 Pipe (1-7/8" OD)



Backer Plate (46-583)
Use in place of washers for a more sturdy dock.
Also used to align pole dock hinges.



Foot Pad (46-627)
5" Foot Pad. Ideal for hard lake bottoms
including sand, gravel & rock.



On the
Water
Designs