

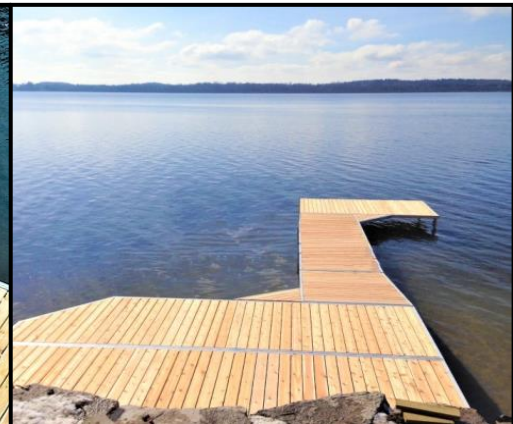


On the
Water
Designs

Pole Docks

Leisure Series

*Build a professional quality dock
for your family*



www.OnTheWaterDesigns.com

Pole Docks

Leisure Series

Our Leisure Series Pole Dock is a dock kit built to professional standards. Each dock is precision crafted from marine grade aluminum and stainless steel fasteners to create an ideal strength-to-weight ratio. It is easy to set up each year and strong enough to last a lifetime. Each frame kit is boxed for ease of shipping and assembles in under an hour so you'll be enjoying your new dock on the first day! Each system is easily reconfigured and expanded to suit the changing needs of your family so you can start small this year and expand as your needs change. Start your project today!



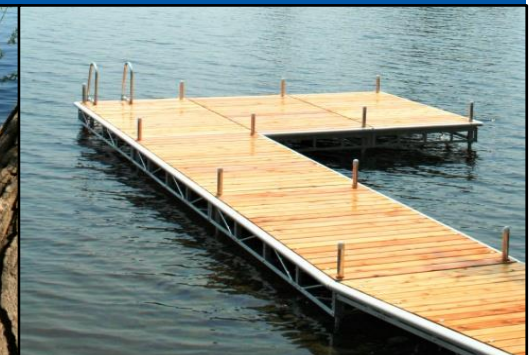
5' x 10' Frame
4" x 5" x 10'4"
Box

Easy to Build
1Hr
Per Frame

Light Weight
75 Lbs
Per Frame

Great
Warranty
10
Years

Use Any
Decking
15"
Stringer Centers



Delivery & Installation is available through a professional 3rd party installation crew.
Delivery is \$150/HR one way. Installation is generally 10% - 13% and may change based on specific requirements.
All prices subject to change without notice. All measurements are approximate.

Pole Docks

Leisure Series



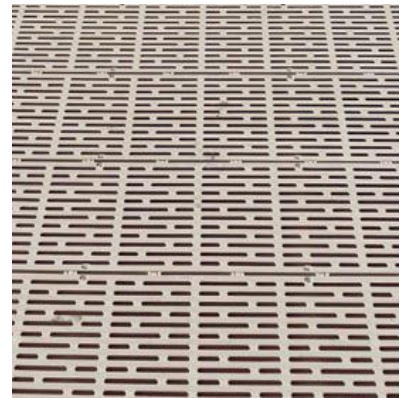
Primary Items

Frame Kit	Bolt together dock or ramp frame. Box Dimensions: 4"x5"x124" 75lbs Includes stainless fasteners. Ramp includes hinges	\$ 675.00	\$ 800.00		
		Ramp 11-298	Dock 11-642		
Deck Kit	Removable deck panels Wood & PVC panels are 5 boards and include clips ThruFlow panels are 1' and include screws	\$ 500.00	\$ 650.00	\$ 950.00	\$ 1,050
		PT 11-712	Cedar 11-713	ThruFlow 11-812	PVC 11-813
Leg Kit (Pair)	Includes 2 legs holders, 2 feet & 2 caps (standard) 1st dock needs 2 kits, the rest need 1. "L" needs 1.5 Poles sold separately	\$ 125.00	\$ 190.00		
		Standard 11-258	Hidden 11-406		
Aluminum Pole	1-1/2 Sched 40 Pipe. Available in full & standard lengths Sold separately, not in pairs	\$ 45.00	\$ 67.50	\$ 90.00	\$ 250.00
		4' 46-982	6' 46-928	8' 46-392	24' 46-579
Corner Walkway	Makes a great addition to any T, L or P shaped dock. Triangles add useable space and look fantastic. Requires header kit to attach to 5' end	\$ 375.00	\$ 425.00	\$ 475.00	\$ 875.00
		No Decking 11-304	PT 11-305	Cedar 11-306	PVC 11-308
Assembly (/Frame)	Basic assembly builds the upper 5x10 frame kit. Complete Assembly adds leg holders & accessories so the dock is ready to be put in the water	\$ 90.00	\$ 175.00		
		Basic LB-642	Complete LB-643		

Additional Hardware

Header Kit	Needed for 5' exposed end of dock to accept EZ-Glide bumper strip or corner walkway	\$ 55.00
		11-763
Ramp to Shore Hinge Kit	2 Pairs of hinges & pins for ramp end. Attaches ramp to wood or concrete wall at shore	\$ 60.00
		11-422
Deck Clips	Easy to Install deck clips to fasten panels to frame (10 pk).	\$ 65.00
		46-107
Patio Stone - Recessed	Great for mucky bottoms to spread the weight of the dock out. Needed when mud is up to your shins	\$ 15.50
		89-685
HD Anchor Package For Pole Dock	Kit contains 175lb anchor, 2 cables, turnbuckles & fastening hardware	\$ 325.00
		16-536

ThruFlow Anti-Slip Decking



Standard Leg kit



Hidden Leg kit



Ramp to Shore Hinge



Pole Docks

Leisure Series

Contact Us
 On the Water Designs
 Kilworthy (Muskoka) ON
 (866) 477-0177
 info@onthewaterdesigns.com



EZ Glide Bumper

5'	\$45.00	Corner	\$10.75
	53-915		53-890
10'	\$85.00	End Cap	\$8.25
	53-696		53-452



PVC Glue (118ml)
\$13.00

50-581

Use with
 Corners & Caps



\$55.00

61-146

Premium Solar Light



51-552

51-551

51-215

\$27.00

Install LB-948 \$15.00

6" Flip Up Cleat Hardware Only 68-723 \$8.75



\$99.00

61-856

Solar Post Lite (2pk)



\$60.50

61-426

Solar Dock Lite (2pk)



	Capacity	Size
8'	2,500 lbs	\$ 400
		52-443
12'	5,000 lbs	\$ 600
		52-403
14'	10,000 lbs	\$ 700
		52-208

Wake Watcher	3,500 lbs	\$ 650
		52-318

Install Whips	\$ 40
	LB-460



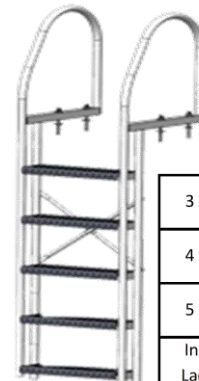
Wake Watcher™

Premium Mooring Whips



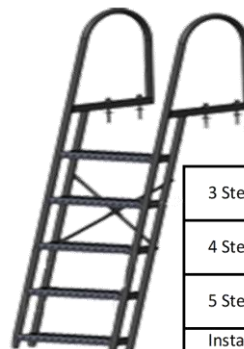
	Height	Grey
3 Step	24"-36"	\$ 900
		50-867
4 Step	30"-42"	\$ 1,050
		50-777
5 Step	36"-48"	\$ 1,200
		50-845
6 Step	42"-54"	\$ 1,350
		50-420
7 Step	48"-60"	\$ 1,500
		50-223
8 Step	54"-66"	\$ 1,650
		50-993
Measurements		
Inside Width		27.5"
Outside Width		31.5"
Railing Height		32"
Step Rise		7.5"

Water Entry Staircase



Straight Ladder

	Grey	Measurements
3 Step	\$ 489	ID 18"
	54-361	OD 20.5"
4 Step	\$ 525	Depth 5.5"
	54-397	Step Height 11"
5 Step	\$ 575	3 Step Lower Height 33"
	54-330	4 Step Lower Height 44"
Install Ladder	\$ 30	5 Step Lower Height 55"
	LB-681	



Angled Ladder

	Black	White	Grey	Measurements
3 Step	\$ 520	\$ 520	\$ 490	ID 18"
	54-742	54-455	54-869	OD 20.5"
4 Step	\$ 595	\$ 595	\$ 530	Step Height 11"
	54-743	54-543	54-517	3 Step Lower Height 33"
5 Step	\$ 665	\$ 665	\$ 575	4 Step Lower Height 44"
	54-744	54-350	54-708	5 Step Lower Height 55"
Install Ladder		LB-681	\$ 30	Angle 15"