



*Documentary by **bUneke PRODUCTIONS***

DOCUMENTARY: by bUneke  
PRODUCTIONS Presents Melbourne Founders Cabin Project  
PRODUCER/DIRECTOR: Jennifer East  
CAMERA: Donnie Crawford, Jr.  
EDITOR: Jennifer East  
PRODUCTION MANAGER: Lynn Dilks

# **Melbourne Founders Museum of Crane Creek**





# Melbourne Founders Home

[Documentary]

*Running Time:*

**30 minutes**

*Directed By:*

**Jennifer East**

*Produced By:*

**Northrup Grumman**

**Greater Allen Dev.**

*Production Company:*

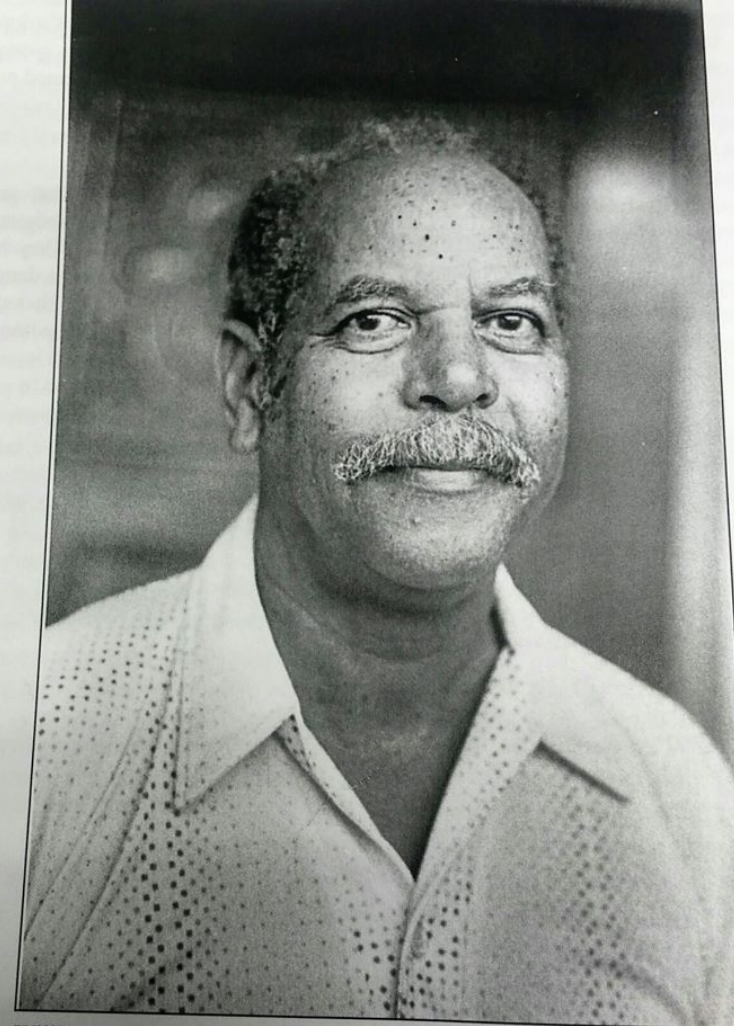
**bUneke Productions**

*Edited by:*

**Jennifer East**

*Camera:*

**Donnie Crawford, Jr**



William R. Brothers Jr.

# LOGLINE

Look through the windows of the the first settlement home in the Crane Creek area of Melbourne, Florida, as many generations have done since the 1800s, until a small group of dedicated volunteers acted to save this classic, historical shotgun house and share its history with the world.

# SYNOPSIS

The home is steeped in history. In 1880, the U.S. Census noted only five black men who headed households in Brevard County. Three of the men were Peter Wright - a postal carrier who delivered mail, by boat, up and down the Indian River - along with Wright Brothers, and Balaam Allen. The three had arrived in what would later become Melbourne, circa 1867, after they were freed from slavery. Like most residents, they fished, kept small crops, and lived off the land.

The tiny home, was built beneath a canopy of oak trees along with the mosquito-heavy river bank. The Capt. Peter and Leaha Wright, Wright and Mary Brothers, and Robert and Carrie Lipscomb established Allen Chapel AME Church in this tiny house. Over the years, different families have lived in the home. *Melbourne Founders Museum of Crane Creek* documents the journey from the beginning and the strength and resilience of these founding families were.

# THE STORY

The nonprofit Greater Allen Development Corporation helmed the project to move the tiny home from beneath its canopy of oak trees, on Crane Creek, in collaboration with Northrop Grumman, as part of a plan to use the structure as a cultural museum that focuses on the rich history of the area.

Excerpts from Florida Today article, May 29, 2020:

“It’s really unbelievable to see this happening. But it will teach young people that this is where we come from. All they know is what’s happening now. It’s hard to get children to see how far we’ve come, but knowledge is power. This has been three years in the making,” said James Shackelford, president of Greater Allen Development, which also holds an annual festival highlighting the cultural history of the area.

With so much historical significance to discover from humble beginnings, this film documents the resurrection of this tiny house as it takes on a new life as *Melbourne Founders Museum of Crane Creek*.







## Interviews & Narrator *Key Players*

With a professionally created script, the narrator leads us on a journey of the early years in Crane Creek, later renamed Melbourne. Historians and local community leaders provide testimony and insight into the past.



## Actual Footage & Images *Area Locations*

Our professionals weave photos and documents gathered from still existing locations and buildings and offer a concentrated account of the beginnings in Crane Creek as well as the significance of the Brothers' home. Stories about the founding leaders and other firsts from the community paint a colorful portrait of a time many have never known.



## Reenactment Scenes *Actors*

Against the backdrop of the narrator's voice and the interviews with prominent personages, actors in vintage clothing and historical items show glimpses of how life was more than 100 years ago and provides a sense of history through visually interesting footage.

## DIRECTOR, Jennifer East

A passionate and driven creator who tells stories and brings them to life, she has been directing projects, for others, for many years and has fulfilled many roles in the industry. When Jennifer met Elisa, they created an instant connection and filming this project, to help others, enhances her life.



## CAMERA, Donnie Crawford

Donnie Crawford, BS, MS, is a professional Camera Operator and DP with 10+ years in the entertainment industry. He has vast experience in film, reality television, news, commercial production, broadcast sports and audio/video. Currently, he operates cameras in broadcast sports as director of photography.



## PRODUCTION MANAGER, Lynn Carol

Lynn has years of experience in front of and behind the camera, but her expertise lies in scheduling and organizing the business and financial issues within bUneke Productions. Lynn is a passionate organizer and thrives best when she's coordinating and providing a service to others.



## Scriptwriter, Mary Brotherton

Scriptwriter, Mary is a multi-talented professional, zealous about truth-telling within storytelling. Her attention to detail spills over from her love of writing and editing to ensure the highest quality of production in any medium.

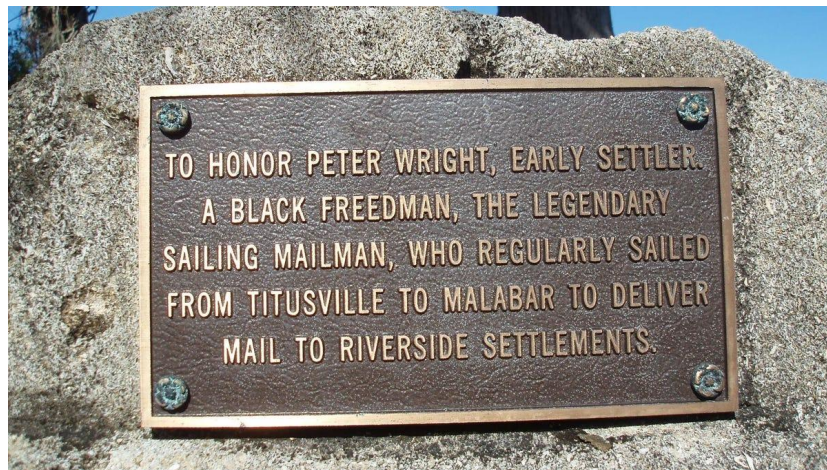




# GRATEFUL

We are grateful that Joseph McNeil and Charles Jackson trusts our team at [bUneke.org](http://bUneke.org) and allowed us to help share the story of the beginning of Melbourne, Florida and how this insignificant-looking little building can bring substantial, hope and a sense of pride to the community. *Melbourne Founders Museum at Crane Creek* inspires and motivates others to protect our existing history.

We can't move forward if we don't understand our past.





# CREDITS

*Directed by:*

**Jennifer East**

*Produced by:*

**Greater Allen Dev.**

*Director of Photography*

**Donnie Crawford, Jr**

*Camera*

**Jennifer East**

*Camera*

**Franklin Prather**

*Production Manager*

**Lynn Carol**

*Editor*

**Jennifer East**

*Scriptwriter*

**Mary Brotherton**







Working today to change tomorrow.

**bUnoke**.org  
READ · WATCH · LISTEN