



2019 - 2020

ANNUAL REPORT



ARIZONA
AGRICULTURAL EDUCATION
FFA FOUNDATION



ARIZONA
AGRICULTURAL EDUCATION
FFA FOUNDATION

OUR MISSION

The Arizona Agricultural Education/FFA Foundation is dedicated to providing expanded educational and leadership opportunities for the agricultural education programs across the state of Arizona.

OUR VISION

It is the vision of the Arizona Agricultural Education/FFA Foundation to secure resources to support, enhance, and strengthen the educational and leadership effectiveness of the Arizona Association FFA, the Arizona FFA Alumni Association, the Department of Agricultural Education at The University of Arizona, and the Arizona Agriculture Teachers' Association while maintaining positive relationships with students, teachers, business and industry representatives, and the community.

MESSAGE FROM OUR PRESIDENT

If you have ever wondered what the Arizona Agricultural Education/FFA Foundations does, why our Board members and volunteers do what they do and why our supporters give, you do not have to look very far.



There are countless examples present in classrooms across our country, at county fairs and livestock shows, at judging and speaking competitions, in leadership roles for their Chapter, State and National FFA as well as employees, entrepreneurs, community leaders and elected officials.

We support the efforts to cultivate well trained, ethical, and motivated leaders for American Agriculture. No other organization in the nation does what the FFA does to prepare young people to be successful in life.

Many of us may have benefited from this organization personally and can have the satisfaction of knowing that our dollars are well spent when we have supported these outstanding young people.

I am especially pleased and impressed by our results given the difficulties this year has presented. Who would have expected we would be experiencing a pandemic shortly after our Gala last February? This just goes to show you how everyone involved with our Foundation, Agricultural Education and the Arizona FFA is committed to the success of our youth!

I thank you all for your past, current and future support of this Foundation. Thank you for helping enable us to deliver on our mission.

I am pleased to provide you with this annual report showcasing the activities and financial highlights of the Arizona Agricultural Education/FFA Foundation.

Sincerely,

Stephen Goucher
President (July 2014 to June 2020)

EXECUTIVE COMMITTEE



President
STEPHEN GOUCHER
Farm Bureau
Financial Services
Glendale



Vice President
HEATHER RAYNER
A Tumbling T
Ranches
Litchfield Park
Estrella District



Secretary
AL GAGE
Avondale



At-Large & Treasurer
FARRAH SMITH
Piazzo Dairy
Buckeye



At-Large & Interim Secretary
GRANT BOICE
Retired
Gilbert



At-Large
RICHARD
McPHERSON
Rio Rico High School
Rio Rico



Past Officer
GARY MCKENZIE
Farm Inc.
Tempe, At Large

BOARD OF TRUSTEES



TYLER BOWEN
Corteva Agriscience
Willcox, Gila Southern
District



JERRY CULLISON
Cullison Farms,
Wellton, Yuma
District



KARALEA COX
Common Sense
Consulting
Eager, Northern
District



ELIZABETH FOSTER
Maricopa County
Farm Bureau
Gilbert, At Large



BRYAN GEIGER
Geiger Electric
Peoria, At Large



TANYA HODGES
University of Arizona,
Yuma, At Large



JIM KLINKER
Retired
Mesa, At Large



LEIGH LOUGHEAD
Gowan Company
Yuma, At Large



DOUG NORTON
Farm Credit West
Tempe, At Large



SCOTT PILCHARD
Farm Bureau Wealth
Management
Scottsdale, At Large



KEVIN ROGERS
Arizona Cotton
Growers Association
Tempe, At Large



CHRIS UDALL
Agribusiness & Water
Council of Arizona
Mesa, San Tan District



RICARDO VALENCIA
Luna Valencia
Strategy Group
Phoenix, At Large



SCOTT WHITTEN
Goodyear
At Large



KEN WILLIAMS
Retired
Gilbert, Superstition
District



TRAVIS ZIMMERMAN
OneGuard Home
Warranties
Waddell, At Large

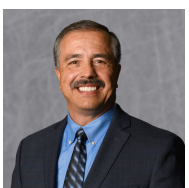
EX-OFFICIO REPRESENTATIVES



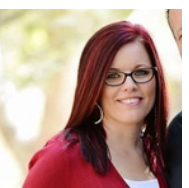
BRUCE WATKINS
State Supervisor of
Agriculture Education



JUSTEN OLLENDICK
AATA Representative



ROBERT TORRES
U of A College of
Agriculture,
Dept. of Agricultural
Education



RANEY EMBREE
FFA Alumni
Representative



**Foundation
Executive Director**
ROCHELL PLANTY,
CMP, CFE



**State FFA
Executive Secretary**
BETHANY MATOS



**2019-2020
State FFA President**
KEVIN BERRIGAN

CONSULTANTS TO THE BOARD



4TH ANNUAL GALA

THE BIGGEST NIGHT
IN ARIZONA AGRICULTURE



Heather Rayner presenting the award to
The Otto & Edna Neely Foundation
(Accepting the award is Cliff Saylor)



Kevin Berrigan presenting the
Agriculturalist of the Year award to
Jose Bernal



Amount of funds raised at the 4th
Annual Blue & Gold Gala: \$257,670

BLUE JACKET LEGACY PROGRAM

The Official Dress jacket was adopted in 1933. The FFA corduroy jacket is an article of faith, honor and pride. The jacket unifies members in a long-standing tradition and reminds them that they are part of something larger than themselves.

The Arizona Agricultural Education/FFA Foundation kicked off the first year of the FFA Jacket Grant Program in 2019 awarding 80 jackets, representing one from each Chapter in the State. With the generous support of donors, we were able to award 96 jackets to students from across Arizona in 2020 at the 4th annual Blue & Gold Gala.



The Blue Jacket Legacy Program provides an FFA jacket for members that cannot afford their own jacket. When students receive an FFA jacket, they become part of FFA history. It has given my students a sense of belonging, FFA pride and ownership. There is no greater feeling than wearing your own jacket and being part of the Benson FFA family.

Jessica Zamudio
Benson FFA Advisor

**BUILDING THE
BLUE JACKET
LEGACY**



THANK YOU PRESENTING SPONSORS 

 **Arizona Farm Bureau®**

 **FARM BUREAU FINANCIAL SERVICES**

THANK YOU GOLD SPONSORS 

   **SRP**
Delivering more than power.™

   **THE UNIVERSITY OF ARIZONA**
COLLEGE OF AGRICULTURE & LIFE SCIENCES
Agricultural Education

THANK YOU SILVER SPONSORS 

 **EMPIRE CAT AGRICULTURE**

 **FARM CREDIT WEST™**
Committed. Experienced. Trusted.

 **WILBUR-ELLIS®**

THANK YOU BRONZE SPONSORS 

 **AMERICAN FAMILY INSURANCE**
Chalys Vickers - Agent

 **ASU W.P. Carey**
School of Business
Arizona State University

 **Bingham**
binghamequipment.com

 **CALCOT**
COTTON SEEDING SERVICES

 **CKP INSURANCE, LLC**
Your Future. Our Passion. Your Expert.

 **DYKSTRA MACHINERY**

 **FARM Inc.**
Financial And Risk Management

 **PINAL**

 **RON & HEATHER RAYNER**

TABLE SPONSORS

Agribusiness & Water Council of Arizona
Alcantara Vineyard and Winery/Robert A & Barbara A Trust
ANA Fund/Ken & Judy Williams
Arizona Agricultural Teachers Association
Barkley Ag Enterprises
Farm Bureau Financial Services – Steve Goucher, Agent
Farm, Inc.
Fertizona
Geiger Electric

Great Western Bank
Groseta Ranches LLC
Bruce Heiden
H-Four Farms
Hickman's Family Farm
Friends of Jose Bernal
Mellon Farms
M&S Equipment
Piazzo Dairy
Rabo AgriFinance
George & Barbara Seperich

Salt River Project
Summit Electrical, Inc.
Supima
Syngenta
The Accomazzo Company
The Jace D. Roeder Foundation
The Otto & Edna Neely Foundation
Thimgan Family
Western Milling

BENEFICIARIES WE SUPPORT

ARIZONA ASSOCIATION FFA

\$354,513.75

PROGRAMS SUPPORTED

- Scholarship Program
- FFA Jackets – Pinal County
- FFA Jackets Estrella FFA District
- Arizona FFA Interns
- State FFA Camp
- Estrella FFA District
- State Leadership Conference
- State Proficiency Awards
- State FFA Degree Program
- Jacket Essay
- National Chapter
- State Officer Candidate/Delegate Mixer
- Star Program
- FFA Gator Raffle Chapter Fundraiser
- Career Development Awards & Team Travel
- State Officer Program
- Summit Series
- Pinnacle Conference
- 8 FFA District Horse Evaluation Contests
- AzFFA Website
- SAE for All
- Student Recruitment & Retention Program



5th Annual Agribusiness Roundtable
Kevin Berrigan, Emma Troub,
United States Secretary of Agriculture Sonny Perdue,
Devin Rossa, Connor Sawyer

FACTS & FIGURES



10,071
MEMBERS



114
ADVISORS



47%
WOMEN



47.2%
MEN



5.8%
NOT
REPORTED



254
STATE
DEGREES
AWARDED
RECORD HIGH!



567,190
HOURS OF
EXPERIENTIAL
LEARNING



80
AGRICULTURAL
EDUCATION
PROGRAMS



31,204
HOURS OF
COMMUNITY
SERVICE BY
AZFFA MEMBERS



70%
AZFFA MEMBERS
HAVE SAE'S
COMPARED TO
59% NATIONALLY



\$2,710,073
IN ECONOMIC
IMPACT FROM
STUDENT
SUPERVISED
AGRICULTURAL
EXPERIENCE

EVENT PARTICIPATION

1500
SPRING
CONFERENCE
PARTICIPANTS



14,695
AVERAGE DAILY
REACH FOR THE
VIRTUAL STATE
LEADERSHIP
CONFERENCE



DEMOGRAPHICS OF COMMUNITIES

39.8%
RURAL

22.9%
TOWN

19.3%
SUBURBAN

18.1%
CITY



2019-2020 STATE FFA OFFICER TEAM

State President
KEVIN BERRIGAN

State Vice President
KAILEE ZIMMERMAN

State Secretary
ELERY MARTIN

State Treasurer
CONNOR SAWYER

State Reporter
JORDYN WOODBURN

State Sentinel
DEVIN ROSSA

State Vice President At-Large
EMMA TROUB

State Vice President At-Large
HAILEY PORTER

State Vice President At-Large
CODY ROWELL

State Vice President At-Large
HUNTER ROBERTSON



The Arizona FFA Foundation serves to meet the financial needs of our students. Without this foundation, student opportunities would be significantly limited. My students have been provided with FFA Jackets, sponsorships to conferences and even scholarships through the generous donations provided by supporters of the AZ FFA Foundation. We are grateful for their continued support.

Sharon Metzger
Basha FFA Advisor



ARIZONA FFA
ALUMNI AND SUPPORTERS

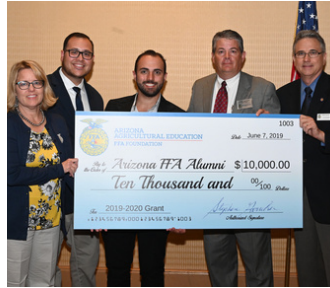
PAGE 08

ARIZONA FFA ALUMNI

\$10,000

PROGRAMS SUPPORTED

- Washington Leadership Conference Student Travel
- Alumni Social
- State Officer Alumni Blazers
- Alumni Regional Development Conferences
- Travel to National Convention
- Alumni Database



FACTS & FIGURES



100+
ANNUAL
MEMBERS



20
FFA ALUMNI
CHAPTERS IN
ARIZONA



351
LIFETIME
MEMBERS



7,115
ASSOCIATE
MEMBERS



The funding provided to the Arizona FFA Alumni Association by the foundation has allowed the new board members the opportunity to train with the National FFA Alumni and reach out and reconnect with the current and potential alumni community in the state. We are so thankful for the support from the foundation so that we could focus our efforts on rebuilding the alumni and not on immediately having to fundraise.

Raney Brown Embree
FFA Alumni Representative
Arizona Agricultural Education/
FFA Foundation Board



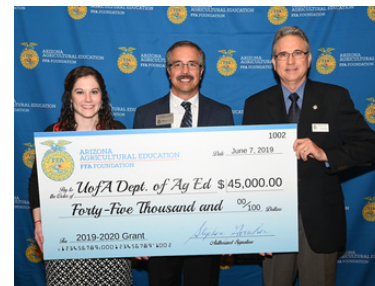
COLLEGE OF AGRICULTURE & LIFE SCIENCES
**Agricultural Education,
Technology & Innovation**

UNIVERSITY OF ARIZONA

\$45,000

PROGRAMS SUPPORTED

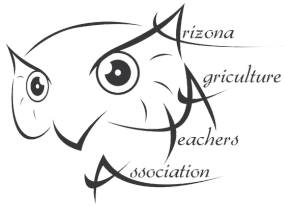
- J.R. Cullison Scholarships
- Student Teacher Travel
- Tom Jones Scholarship
- New Teacher Induction Program



The need to support new teachers and help them to quickly develop competencies and procedures that lead to student success is critical to Arizona Agricultural Educators. The AZ FFA Foundation funds for the AZ Agricultural Education New Teacher Induction Program are essential to provide this support for new Agriculture Teachers as they learn how to provide the total Agriculture Program that creates maximum opportunities for student engagement and success.

Matt Lewis

Assistant Professor of Practice, Agricultural Education, Technology and Innovation Dept
College of Agriculture, Veterinary and Life Sciences
University of Arizona



ARIZONA AGRICULTURE TEACHERS ASSOCIATION

\$38,100

PROGRAMS SUPPORTED

- Professional Development Conferences
- Awards Program
- Ideas Unlimited
- Fall Retreat Dinner
- Summer Conference BBQ
- Administrative Support
- Arizona Agricultural Education Evaluation Instrument

FACTS & FIGURES



106
MEMBERS



80
AGRICULTURAL
EDUCATION
PROGRAMS

“

The AZ FFA Foundation plays a KEY role in the success of the FFA programs in the state of Arizona. This includes the much-needed support to the Advisors of the FFA programs through the AATA, the Arizona Agricultural Teachers Association. The AZ FFA Foundation has been a longtime supporter of this organization. Through the Arizona Agriculture Education Program Evaluation Instrument (AAEPEI) program and many other methods, the AZ FFA continues to support the teachers of the FFA programs in the state. Students can spend up to four years in the FFA but the hope is the great teachers stay for a career. It has been seen over and over how a little financial and mental support goes a long way for teachers. The AZ FFA Foundation is doing its part to make sure great Ag teachers stay in the profession.

Kevin Hicks

AATA Representative

Arizona Agricultural Education/

FFA Foundation Board





FFA GATOR RAFFLE

Congratulations Dennis and Laurel Lindenau as the 2020 FFA Gator Raffle Winner!

Pictured (from left to right):
Matt Halverson, Tucson Salesman;
Dennis and Laurel Lindenau;
State FFA Officers Elery Martin and
Connor Sawyer; Josh Brown, Tucson
Store Manager; and Karen Harrington,
Regional Manager.



WHY SHOULD YOU INVEST?

We are pleased to support FFA students, FFA programs and Agricultural Education throughout Arizona. These programs support the personal and leadership development of young men and women that is so important for developing our future leaders.

Ken & Judy Williams



“

Shelley and I support Arizona FFA and Agriculture education because of the opportunities that are presented to the next generation of agriculturalists. The programs and training the students receive develop leaders that are crucial to feed our nation and world.

Colin & Shelley Mellon

“

Because we live in a world that pays us largely what it thinks we are worth, education is so critical for personal long-term success. I recognize and deeply appreciate FFA's focus on educating young people, and more importantly, educating them about Arizona agriculture, its diversity and the important role it plays in their individual lives. FFA strives to teach young people to be principled in word and deed and that is of incalculable worth to our society. Keep up the great work FFA!

Douglas Norton
Senior Vice President
Farm Credit West

2019-2020 DONORS

DISTINGUISHED STAR

Kemper & Ethel Marley Foundation

TWO STAR

Otto & Edna Neely Foundation

ONE STAR

Arizona Farm Bureau

GOLD KEY

Arizona Cotton Growers Association
Arizona Horse Lovers Foundation
Dr. Scholl Foundation
Electrical District Number 8
Farm Inc.
Heather & Ronald Rayner
Salt River Project
Sanderson Ford
University of Arizona, CALS
West Valley Mavericks Foundation

GOLD EMBLEM

A Tumbling T Ranches
The Accomazzo Co.
AgriBusiness & Water Council of AZ
Alcantara Vineyard & Winery /
Robert A & Barbara A Trust
Alpha Gamma Rho
Ambian & Piazza Dairies
Arizona Cattle Industry Research &
Education Foundation
Arizona FFA Alumni
Arizona Grain Inc.
Arizona Grain Research & Promotion
Council
Arizona Nursery Association
Art Allen
ASU-Morrison School of Agribusiness
AZ Agricultural Teachers Association
AZ Cattle Growers Association
Barkley Ag Enterprises LLC.
Bingham Equipment Company
Blue Mule Outfitters
Bruce Heiden
Calcot, Ltd.
Carrie Hamstra
Cash & Melissa Veo
CKP Insurance, LLC
Colin Mellon
Doug Daley
Dykstra Machinery
Elizabeth Foster
Empire Machinery - Empire CAT AG
Enterprise Holdings Foundation
Farm Credit Services West
Fertizona
Galpin Ford
Geiger Electric
George Seperich
Glenn Hickman
Great Western Bank
Groseta Ranches
H-Four Farms
The Jace Roeder Foundation
James Thimgan
Ken & Judy Williams
Kevin & Annie Wulf
Kevin & Janel Rogers
Laura Galpin
M&S Equipment
Maricopa County Farm Bureau
Michael Brooks
National FFA Foundation, Inc.
Ohalys Victore

Olsen's Grain
Osborne Jewelers
Rabo AgriFinance
Riverview LLP
Rousseau Farming Company
Sharman Hickman
Southwest Risk Management
Stephen Goucher
Steve Melton Farms
Steven Bales
Stotz Equipment
Summit Electrical
Supima
Syngenta
The Family of Emil M Rovey
Tom Jones
UMB Bank
United Dairymen of Arizona
Wade Accomazzo
Wagon Wheel Farms
Western Milling, LLC

SILVER EMBLEM

2T Ranch Youth Leadership Fund
Aaron Gordon
Adam Hatley
Alvin Gage
Ann Wick
April Scibienski
Arizona Association FFA
Arizona Cattle Feeders Association
Arizona Crop Protection Association
Barbara Predmore
Becky & Jason Rovey
Benjamin J. Bjerk
Brian McEntire - American Family Insurance
Agent
Brian Turner
Brinton Colburn
Bruce Cain
Bryan & Sarah Geiger
Buckeye FFA
Campo Verde FFA Alumni
Carol & Dennis Fiscus
Casa Grande FFA Chapter
Chad Hefner
Chelsea McGuire
Chris Udall
Clifford Saylor
Cloudt Partnership LLC
Clyde Sharp
Coleman Design Grp. Landscape Arch.
Coronation Peak Ranches, Inc
Corteva
Cory East
Crescent Seven Ranch, Inc.
Dale's Town & Country Store
Dan Thelander
Daniel Foster
Daniel Shields
Danzeisen Dairy
David Kimmerle
Dawn McGuire
Denise Reis
Dennis & Rhonda Bushong
Denver Whetten
Desert Tree Farm
Discover Financial Services
Donald Bissinger
Duncan Family Farms
Elin & Bill Miller
Elizabeth Miller
Eric Wick
Farmers Gin
Five Rivers Cattle Feeding, LLC
Georgia Bailey
Gila Valley Farms Partnership

Gilbert FFA Alumni
Grant & Kristi Boice
Greg Bamford
Gregory Pierce
Howard Morrison
Jacque Accomazzo
James & Clare Downing
James & Connie Teilborg
Jerry Rovey
Jim & Margaret Klinker
Joe & Paula Volenstine
Joe Granio
John & Alicia Boelts
John Gemmill
Joseph Caballero
K & D Farms
Kami Weddle
Karl Burgeson
Kathryn Tracy
Kendall Wolfbrandt
Kevin Whitehurst
Kris Johnson
Kristen Nelson
Kristie Stark
Lakin Cattle Company
Larry Lemke
Lena McCoy
Mark Smith
Mary & David Faulk
Matt Beyer
Matthew E. Williams
Matthew Hacker
McGuire Auction Services
Melissa Richins
Mellon Farms
Melody Sandell
Michael Mendonca
Mountain Institute JTED
Next Level Livestock Camps
Niles Jennett
On Target Pest Control
Paul Bush
Paul Ollerton
Paul Orme
Paul Van Hofwegen
Philip Bashaw
Progressive Plants, Inc.
Ramon Aldecoa
Rene Carder
Richard Morrison
Richie & Heather Kennedy
Robert & Sara Torres
Rolando Murrieta
Ron Allen
Ron Rayner
Ross Rayner

Safford FFA Chapter
San Manuel FFA & L/D Livesotck
Sean Dugan
Shawna Plumb
Shelley Mellon
Sine Kerr
Soil and Water Conservation Society
Stanley Ashby
Stefanie Smallhouse
Stockman Feeds
Sunlund Chemical Co., Inc.
Susan & Bruce Tonkin
Susie Hughes
Terisha McKeighen
Terri Berrigan
Three Rivers Ag Investments
Todd M. Reeg
Tony Salcido
Traegen Knight
Trevor Hall
Trivium Prep Academy FFA Chapter
Tyler Bowen
Victoria Sharp
Walter Wesch
Welton-Mohawk Valley NRCD
Wendell Stevens
William Negroni
Winslow FFA Chapter
Yuma County Farm Bureau

BRONZE EMBLEM

Allison & Marlon Troub
Amazon Smile
Amber Rice
Andrea Bloomquist
Andrea Moreno
Ann English
Anna Aja
Anneke Moss
Ashley Macawile
Audrie Ouelette
AVI KWA AME Farms
B.A. Glenn
Barbara Kennedy
Becky Hill
Bethany Matos
Betty Busby
Bill Healey
Bill Plummer
Bill Scott
Bobbie Renee Foy
Bobby Wuertz
Bonnie Udall
Boyd Coleman
Brett Cameron



2019-2020 DONORS, CONTD.

BRONZE EMBLEM,
(CONTD. FROM PG. 12)

Brian Farrell
Bruce Watkins
Buron Kimball
Carol A. McGuire
Carola Grebitus
Casey Farnsworth
Cecilia & John Mulcahy
Chad Porter
Cherrill Satterfield
Cheryl Goar
Cheyenne Porr
Chris McCormack
Cindy Cook
Cindy Spadafore
Claudia Hauser
Clay Baden
Clay Cooke
Cody Raney
Con & Joy Englehorn
Coolidge Engine & Pump LLC
Craig Ocock
Daniel Behl
Daniel Coogan
Darcy Cook
Dave Higgins
David Clement
David Collins
Dawn Kasarda
Debbie Ball
Debbie Geiger
Debbie Zimmerman
Denise Warkomski
Denton Ross
Don Tramp
Donna Davis-Customer
Dorothy & George Knapple
Doug Norton

Dutch Summey
Eddie Sullivan
Edward N. Mulrean
Ellen Wood
Ernie Banks
Farrah & Jud Smith
Frye Family
George Skoubis
Glen Vortherms
Gordon & Janet Hall
Grant Hickman
Harris Cattle Company
Hays Trailer Sales of Tucson, LLC
Heather Scott
Heidi Vasiloff
Holly Heiden
Holly Johnson
Ian Accomazzo
Jack Babb
Jack Linke
James Knight
James Loughead
Jason Bluhm
Jeffrey Hedding
Jeffrey Hungerford
Jenny Mortenson
Jim Sharp
Jinnee Whitsett
Joe Whorton
Joel Rosenberg
John Bradshaw
John Mulcahy
John Weldon
Johnny Ware
Jonathan Lines
Jonathan Link
Joseph Montoya
Josh & Kari Williams
Josh Carstens
Juana Hernandez

Julie Littier
Julie Murphree
Julie Soest
Justen Ollendick
Kallie Knight
Karen Harrington
Kari Hill
Kelli Callender
Kelli Wilson
Ken Johnson Jr.
Kenny, Lori & Haley Knight
Kraig Knight
Lane Richins
Lee Freyenhagen
Leigh Loughead
Leighton Liesner
Leon Gamez
Leonard Porfily
Loren Sherman
Margaret & Tom Bartol
Mark Budde
Mark Manfredo
Marleigh Freyenhagen
Matt Lewis
Michael Ludwig
Michelle Morgan
Mike Gillispie
Miriam Loughead
Morgan Jones
Neil Bowman
Nina Taylor
North Bowie Farming, LLC
Patina Thompson
Patricia Nordheim
Phil Frandsen
Port Heiden
Randy Busby
Ray Rees
Rebecca Hobert
Richard Dugan

Richard Van Leeuwen
Rick Saylor
Robert Askey
Robert Bullock
Robert McClendon
Robin Davis
Rochell Planty
Ronda Connolly
Roxy & John Helman
Russ Thimgan
Ryan Clark
Scott Pilchard
Scott Whitten
Sean Lally
Shane Burgess
Staci Fanchini
Steve Karls
Steve Maya
Steven Bales Jr.
Sydney Ollendick
Tanner Anderson
Taylor Rogers
Teresa Gebhart
Terri Hill
Thelma Goucher
Thomas Wuertz
Tim Dunn
Timothy Roden
Tom Randl
Tomas Caballero
Tommy Wildermuth
Tony Komadina
Traesa Rovey
Travis Lilly
Travis Zimmerman
Trisha Grant
Troy Ludwig
Western Ag Life Media LLC



BUSINESS INDUSTRY TOURS

The Foundation coordinates the Business Industry Tours for the Arizona Association FFA State Officers each winter. The tours provide an opportunity for the State Officers to learn more about the agriculture industry in Arizona and meet with corporate supporters.



SUPPORTERS



STRATEGIC PLANNING

During the fall of 2019 the Arizona Agricultural Education/FFA Foundation Board conducted a two day facilitate Strategic Planning Process. Three top focus areas were identified for the coming year. The Board was extremely successful during the year moving forward in the goals established in each focus area and will conduct another session in the fall of 2021 to continue advancing the goals and vision of the Foundation.

DONOR DEVELOPMENT

- Implemented new technology for a donor management system
- Established a Fund Development Committee implementing a structure and expectations

LEADERSHIP

- Created and adopted clear job descriptions and expectations for board service
- Updated Board Commitment Process
- Created a leadership onboarding process

COMMUNICATIONS

- Increased and enhanced communications through a new monthly electronic newsletter, social media and direct emails to supporters
- Published the first annual Report distributed at the 2020 Blue & Gold Gala
- Developed a new enhanced website



ARIZONA
AGRICULTURAL EDUCATION
FFA FOUNDATION

CONTACT THE FOUNDATION

602-705-9211

PO Box 5310

Glendale, AZ 85312

Foundation@azffaoundation.org

azffaoundation.org



/arizonaffa



@arizonaffa



/arizonaffa



/azffaoundation