

February 6, 2019

**Attention: Working Group Members**

**Re: Saskatoon Mountain Park Management Plan Engagement Summary**

## **1.0 Introduction and Purpose**

Historically, significant efforts were made by the County of Grande Prairie No.1 and Alberta Parks to gather broad public feedback on the future of Saskatoon Mountain. Various plans and proposals have been created over the years. To further Alberta Parks' commitment to engage the public in the newly designated Saskatoon Mountain Provincial Recreation Area, Gen 7 Environmental Solutions was contracted in 2018 to review and analyze past processes, and act to ensure all interested parties were able to participate in the overall management planning process.

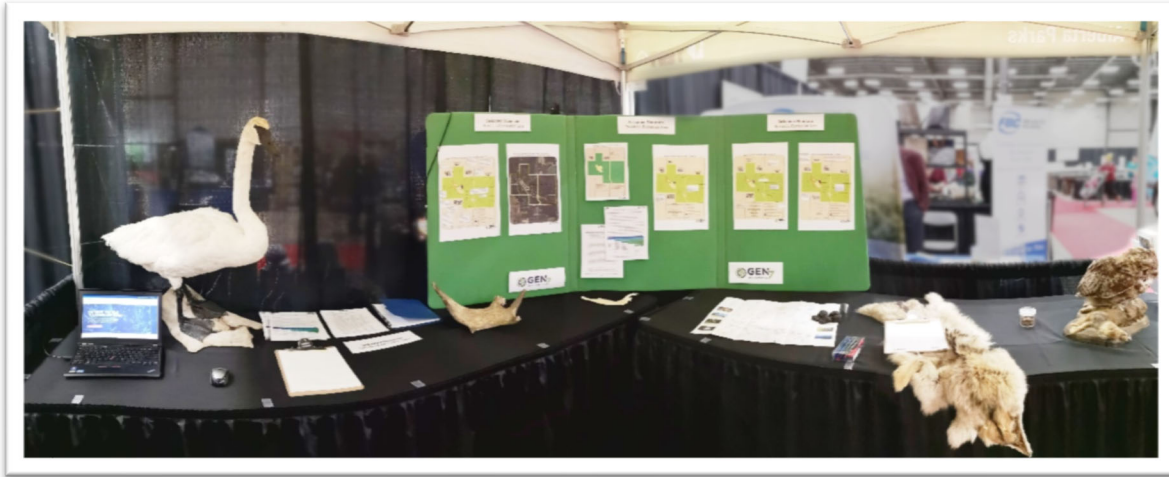
Recognizing the efforts of residents to participate over the years, Gen7 focused their efforts on building from input received during previous processes. The recent engagement opportunities designed by Gen7 were focused on re-engaging with key stakeholders and specific user groups not well represented during past engagement sessions, as well as confirming management planning direction (as distinct from gathering broad input on public interests in land use).

## **2.0 Methodology**

Initial meetings were conducted with staff from both Alberta Parks and the County of Grande Prairie No. 1. Gen7 staff spent time on Saskatoon Mountain speaking with various members of the public, recreational users and observing patterns of use.

During the Fall Home and Leisure Show held on October 26-28, 2018, Gen7 co-hosted a booth with Alberta Parks to be present in community, to substantiate concept planning and to promote the various ways for people to connect with the project at this stage.

A flyer for distribution included a concept map accompanied by a summary of historical land use and public engagement opportunities to date. Key messaging focused on the overall planning process, ongoing opportunities for feedback and next steps in management planning.



Opportunities for the public to provide feedback at the Home and Leisure Show included:

- Discussing questions, comments and concerns directly with Alberta Parks and Gen7 staff;
- Leaving an email for updates and a personal invitation to the next Open House;
- Completing an online survey; and
- Using the available computer to immediately submit an email suggestion.

Gen7 staff kept track of visitors to the booth who showed interest in either of two distinct areas - asking about Alberta Parks in general (and left the booth with an Explore North map) or discussed Saskatoon Mountain management planning specifically (and left with the flyer). These conversations are highlighted in Section 3.0 as Public Feedback Received.



Concurrent to hosting the Home and Leisure Show booth, Gen7 staff actively sought engagement by visiting adjacent land owners and neighbours. Over the course of the weekend, Gen7 discussed the project with area users on site, met with families at their homes and hosted a working group session with key stakeholders.



Overall, new engagement results confirm the comments received from past engagement opportunities, more specifically that stakeholders are interested, supportive of progression of management planning process and looking forward to detailed trails maps.

To begin the working group meeting, Gen7 staff described the historical consultation approach and current initiatives, identified the importance of balancing multi-stakeholder interests and explained the Provincial Recreation Area's requirement to balance recreation and conservation.

Feedback was gathered on the overall approach is highlighted in Section 4.0 as Working Group Feedback Received. Feedback was also gathered on detailed proposed facilities and trails maps, highlighted in Section 5.0 as Concept Maps Discussion. Four broad topics were discussed:

1. **Concurrent plans and initiatives** – inquiries were made about alignment with;
  - a. Archeological dig site
  - b. Regional Land Use Planning
2. **Hunting** – various opinions were expressed, and members requested a proponent representing the hunting community be included in future working groups session;
  - a. No hunting
  - b. Primitive weapons, Primitive weapons use
  - c. Hunting (should be allowed everywhere)
  - d. Firearms ok to carry, no discharge without permit
  - e. Clarity is required on regulations to make informed decisions

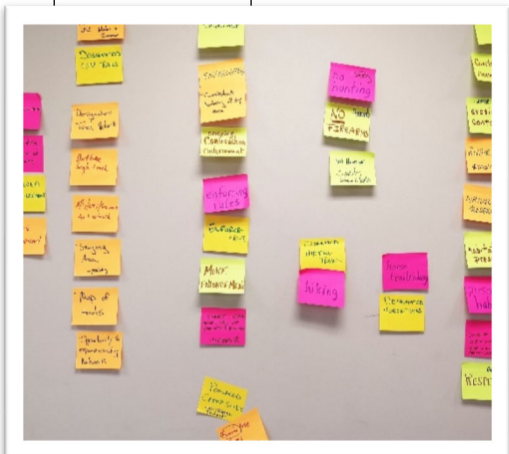
3. **Enforcement** – participants expressed excitement for increased presence;
  - a. Ability to enforce (need to have a strategy)
  - b. Enforcement ability
  - c. Presence as deterrent
  - d. Liability for things like stunting (discussed privately with Gen7 staff regarding implied liability when providing facilities for high risk recreation)
4. **Stewardship** – working group members identified a current lack of user group accountability, and clearly demonstrated interest in ongoing participation;
  - a. Group accountability (up keep and maintenance, not rehabilitation from current state)
  - b. Volunteer opportunities

### 3.0 Public Feedback Received

Unique touchpoints (319 total)	Method of input	Specific Feedback received (*no order, information added in brackets for clarity)
93	Meaningful conversation at Show – Parks general inquiries	<ul style="list-style-type: none"> <li>· Weed management</li> <li>· Trash management and enforcement</li> <li>· Looking for opportunities to volunteer</li> <li>· Park and PRA facilities questions</li> <li>· Invasive muscle prevention</li> <li>· Coyote reproductive cycle timelines (!)</li> </ul>
187	Meaningful conversation at Show – Saskatoon Mountain planning specific inquiries	<ul style="list-style-type: none"> <li>· Adjacent land access (mountain bike access on east side)</li> <li>· Observation tower as adventure tourism</li> <li>· Shooting range</li> <li>· Separate horses and hiking trails</li> <li>· Include horse trails (3 times)</li> <li>· Mountain biking</li> <li>· Plug-in campsites at day use site, with long loops for running</li> <li>· Non-motorized campground</li> <li>· Campground (15 times)</li> </ul>
	Email sign-up sheet	*** of the 187, 6 signed up for e-updates
12	Adjacent / neighbouring land owners	<ul style="list-style-type: none"> <li>· No ATV use, owl research ongoing, suspension bridge</li> <li>· Camping</li> <li>· Interested in volunteer opportunities</li> <li>· Yes ATV use, currently too rutted, too loud at access points for adjacent land owners</li> <li>· Keep it natural</li> <li>· UTV on East for access only, challenging ATV trails, campground</li> </ul>
3 (to date)	Emailed feedback	· See Appendix A – Nov 1 2018; Brent Watson
8	Survey respondents	· See Appendix B
10	Working Group members	· *Detailed in Table 4.0 below.

## 4.0 Working Group Feedback Received

Unique touchpoints (319 total)	Method	Specific Feedback received (*no order, information added in brackets for clarity)
10	Working group attendees – When asked about personal (or user representation) priorities for area design	<ul style="list-style-type: none"> <li>· Fair consultation (*discussed privately to note improved motorized representation and to ensure ‘hunting’ was fairly represented)</li> <li>· Detailed designated trail committee to be instated?</li> <li>· Dynamic development</li> <li>· Partnered development</li> <li>· Representation of silent majority (hunting)</li> <li>· Opportunity to expand existing network</li> <li>· Map of trails</li> <li>· Staging area (parking)</li> <li>· ATV / UTV / snowmobile trail network</li> <li>· Dirtbike single track</li> <li>· Designated trail network</li> <li>· Designated OHV trails</li> <li>· Responsible motorized vehicle use for winter and summer</li> <li>· Enforcement (3 comments, exactly the same)</li> <li>· Enforcing rules</li> <li>· More enforcement</li> <li>· Ongoing conservation enforcement</li> <li>· Consistent monitoring of the day area</li> <li>· Simple trail maintenance schedules/rules</li> <li>· Enforce illegal activities and use stewardship pressures (maintain area improvements)</li> <li>· No hunting (looking for clarity on how it works)</li> <li>· No firearms (questions about permits)</li> <li>· No hunting (safety concerns)</li> <li>· Family use zone (facility zone)</li> <li>· Powered campsites (visible presence, stewards?)</li> <li>· Designated hiking trails, hiking</li> <li>· Designated horse trails</li> <li>· Horse trail riding</li> <li>· Respect and pride</li> <li>· Conserve and respect nature and others while maintaining motorized usage</li> <li>· Preserving habitat</li> <li>· Habitat preservation</li> <li>· Nature preservation</li> <li>· Repair damage and maintain</li> <li>· Erosion control and water management</li> <li>· Controlling access to area</li> <li>· Protection</li> </ul>



## 5.0 Concept Maps Discussion

	<b>Pros</b>	<b>Constructive Feedback</b>
<b>Concept Plan</b>	<ul style="list-style-type: none"> <li>· Good start to framework</li> <li>· Conservation is strong</li> <li>· Good separation among disciplines</li> <li>· Practical trail designates (multi-use) or failure</li> <li>· Motorized use</li> <li>· OHV trail network commitment</li> <li>· Comprehensive</li> </ul>	<ul style="list-style-type: none"> <li>· Safety considerations with pot holes, ruts and damage</li> <li>· Pavement destroyed</li> <li>· Biggest problem is 4-wheel drive vehicles</li> <li>· Motorized use summer and winter</li> <li>· Snowmobile (winter use is desirable)</li> <li>· Winter motorized</li> <li>· Snowmobile and x-country ski</li> <li>· Combined non/OHV</li> <li>· No mixed use (on trails)</li> <li>· Add single track motorcycle</li> <li>· Need more walking trails in day use area (short loops)                             <ul style="list-style-type: none"> <li>· Dog walking</li> <li>· Mountain biking</li> <li>· Mountain bike trails</li> <li>· Equestrian trails</li> <li>· Many rec trails</li> <li>· Campground</li> </ul> </li> </ul>
<b>West of 92</b>	<ul style="list-style-type: none"> <li>· Motorized use (some concerns with erosion)</li> <li>· Motorized use will continue</li> <li>· Addition of longer trails for OHV use</li> <li>· Designated staging areas</li> <li>· Some combined use for access</li> <li>· Lagoons for recreation use</li> <li>· Campground</li> <li>· Motorized frolic areas</li> </ul>	<ul style="list-style-type: none"> <li>· No accountability to any</li> <li>· Restrictive</li> <li>· Winterized motorized use closure</li> <li>· Should not have combined equestrian trails</li> <li>· Need to add equestrian/bicycle use</li> <li>· Trail from Beaverlodge</li> <li>· West facility boundary (frolic area possible erosion and controlled trail for safety (multi-use))</li> </ul>
<b>East of 92</b>	<ul style="list-style-type: none"> <li>· Previous discussions indicated that these were to be developed trails here</li> <li>· Significant lack of development</li> </ul>	<ul style="list-style-type: none"> <li>· Walking trails could be used for horse/bike</li> </ul>

## 6.0 Closure

Working group members have requested to be continually engaged with facilities planning. Significant support was also demonstrated for stewardship opportunities moving forward. Many participants offered in-kind contributions for the ongoing maintenance, indicated also that the current state of rehabilitation (of some areas in particular) was too much work to be undertaken by volunteers.

Many comments received indicate uncertainty in regulations, restrictions and opportunities that result from the transition to Provincial Recreation Area. Many of the issues presented will be resolved with public access to more information. New opportunities presented include increased mountain bicycle use, equestrian use, a motorized 'frolic area', strong interest in winter use and an interest in connecting Beaverlodge to Saskatoon Mountain via motorized trail.

It is Gen7's recommendation that Alberta Parks build on this opportunity for stewardship through community members. Small and meaningful projects are available that would help build capacity in key stakeholders and user groups. A potential solution was identified by members of the Working Group - to work with the already existing "Saskatoon Island Stewards" to undertake value added projects for Saskatoon Mountain.

We look forward to discussing any aspects of this document as we move forward.

Please contact the undersigned at 780-542-3676 or by email at [kwidenmaier@gen7env.com](mailto:kwidenmaier@gen7env.com) or [kaylyn.gervais@gmail.com](mailto:kaylyn.gervais@gmail.com) if you have any questions.

Sincerely,



**Kerri Widenmaier, MEdes., PBIOL.**  
Senior Biologist  
GEN7 Environmental Solutions Ltd.  
Office (780) 542-3676 Cell: (780) 515-1943  
[kwidenmaier@gen7env.com](mailto:kwidenmaier@gen7env.com)



**Kaylyn Gervais**  
Public and Stakeholder Engagement Specialist  
GEN7 Environmental Solutions Ltd.  
Office (780) 542-3676 Cell: (780) 238-9087  
[kgervais@gmail.com](mailto:kgervais@gmail.com)

## Appendix A- Brent Watson email

Nov 1 2018

Brief Bio – I was born and raised in Wembley, went to high school in Beaverlodge. Currently live in Grande Prairie. Along with family and friends, have enjoyed the Saskatoon Mountain area for many years (hunting being a major activity) and owned a quarter section for several years on the NE edge. Know many of the landowners in the area. Was active in the consultation/public input meetings and process eight-ish years ago that was initiated to move the area from a “Natural area” to a “Provincial Recreation Area” – representing the hunting community primarily. In my 14<sup>th</sup> year as president of the provincial Alberta Bowhunters Association, attending regular meetings with Alberta Fish and Wildlife senior staff and other stakeholder groups, serving on various committees developing provincial policy for F&W.

After the Oct 28 2018 meeting about the Saskatoon Mountain PRA with the consulting firm hired by Alberta Environment and Parks in Beaverlodge, some people were very concerned about the meeting itself, who was there and who was not there, the purpose of the meeting etc etc. Because of my background and history with the previous processes involving the Saskatoon Mountain area, being a long time user of that area, being a bowhunter, I was contacted and followed up with their and my concerns with Mark from the local AEP office. Mark advised me that the consulting firm hired by AEP held the meeting to look primarily at the issue of OHV use/abuse of the area (which has been and is the biggest issue) and how to move forward. The folks who had contacted me (one who had been at the meeting) were concerned with comments made that were not supportive of hunting continuing in the area and no hunters were present to counter the arguments.

Mark contacted Aaron with the consulting firm about our concerns and in conversation, Aaron and I thought it would be beneficial moving forward that I be involved in any future communications/meetings just to give information, answer questions, etc on “hunting on Saskatoon Mountain”.

Throughout the initial consultation process seven years ago, from the feedback at the meetings, support from local landowners and endorsement from most of the public, in the consultant’s report and in its recommendations to “Parks”, primitive weapon hunting would be allowed moving forward if and when the area would be designated as a Provincial Recreation Area. Mark and Aaron have both confirmed that this recommendation would still be followed and has support from AEP and FW.

Most of my experience hunting on the “mountain” has been with archery tackle and to a much lesser degree and just recently, with my muzzleloader (a newer inline I just bought in 2017). Since I started hunting the area, I would say that 95% of the people I have met there or know, hunt with a bow. Now that hunters are required to get a Discharge Permit to hunt the PRA, Alberta Parks can now track who and how many people actually hunt the area. They have been quite surprised as to how many people do hunt the mountain – and I still have run into some who do not know they need a discharge permit so am sure these numbers will rise as the word gets out and people are becoming aware of the new designation to a PRA and the need for the permit. Hunters are a very significant /stakeholder user group of the area.

Aaron had suggested that the concerns raised at the meeting about hunting on the “Mountain” were more of a safety issue in nature and we feel it would be of good value to have myself involved to help dispel any concerns surrounding “hunting”, help answer some questions etc.



Public use of the “Mountain” has certainly increased over years as has the number of bowhunters using the area. The increasing area population, the increase in bowhunter numbers, the closeness of the area to a major center, the (once) abundance of game animals, the recent presence of elk on the mountain, all have been factors.

The habitat quality for big game species on the mountain has certainly declined over the years. The area is being choked out by alder and willow. Logging on private lands around the mountain has diminished habitat. The density of game animals (in my estimation) has declined.

Primitive weapon hunting and bowhunting in particular is extremely “safe” because of the nature of the weapon used. Short range - you have to be close to your target. Both to identify and to make a shot. Because of the density of the vegetation on the mountain in most of its area, getting close is extremely difficult. Bowhunters I know and have run into primarily use treestands over waterholes or along game trails. Spot and stalk is almost impossible. Calling (for elk or moose in the rut) is another option but that is tough too because of the difficulty in getting a clear shot – even if they come close.

Bowhunters typically need to be within 40 yards to take a shot. Even with the new inline muzzleloaders that are very capable of much longer shots than their predecessors, the terrain and thickness of the vegetation do not allow that.

Many municipalities in North America have looked to bowhunting within their city/town limits as a tool to reduce game populations (typically whitetail deer) and thus reduce vehicle accidents, damage to gardens/shrubbery, human/pet conflict/interactions. There are archery only/primitive weapon areas that have been designated usually in areas that have higher human population densities (Saskatoon Primitive Weapon Zone, bow zones around Calgary, Edmonton and Canmore). The safety component of archery equipment/bowhunting is a big factor in these decisions. I am not aware of any incidents where anyone has been injured by a bowhunter and in inquiries to FW, they are not aware of any either.

Hunters do not want to be around other people and their activities, even if it is just folks walking, as these activities disrupt the patterns and habits of game animals, lower a hunter’s odds and lessens the hunting experience. We seek out quiet areas for all of those reasons. In all my years of hunting on the mountain, I have almost never run into anyone who was not also hunting. As the hunting season progresses and it gets colder, I even see less people – hunters included. The bulk of the general use is around the old Radar Base site and once you branch out from there, usage drops dramatically. The use by hunters is primarily in these otherwise seldom used areas.

If anyone has more questions, etc feel free to contact me anytime (cell 780-978-1195) ([Brent@albertabowhunters.com](mailto:Brent@albertabowhunters.com)).

## Appendix B- Survey Feedback

#1

**COMPLETE**

**Collector:** Web Link 1 (Web Link)  
**Started:** Friday, October 26, 2018 3:14:44 PM  
**Last Modified:** Friday, October 26, 2018 3:17:03 PM  
**Time Spent:** 00:02:19  
**IP Address:** 207.148.173.66

Page 1

**Q1** How important is Saskatoon Mountain PRA to your quality of life? **75**

**Q2** How often do you visit Saskatoon Mountain PRA? **Multiple times per year**

**Q3** Do you feel that Saskatoon Mountain PRA has mostly positive impacts on your life? **Yes**

**Q4** What are some ways that Saskatoon Mountain PRA positively impacts your life?

the views give me perspective

**Q5** Do you feel that Saskatoon Mountain PRA has mostly negative impacts on your life? **No**

**Q6** What are some ways that Saskatoon Mountain PRA negatively impacts your life? **Respondent skipped this question**

**Q7** Do you feel that Alberta Parks offers opportunities for you to discuss any issue or interest that you have regarding Saskatoon Mountain PRA? **Yes,**  
 How would you like to be able to engage with Alberta Parks?:  
 ongoing learning opportunities. nice to see you at the show, makes it easy for me to learn

**Q8** Do you feel like you have been able to influence management decisions for Saskatoon Mountain PRA? **No,**  
 Please tell us why or why not...:  
 not yet

**Q9** Please enter your email if you would you like to be contacted about the upcoming Open House for Saskatoon Mountain PRA management planning. **Respondent skipped this question**

## #2

**COMPLETE**

**Collector:** Web Link 1 (Web Link)  
**Started:** Friday, October 26, 2018 6:53:33 PM  
**Last Modified:** Friday, October 26, 2018 6:54:59 PM  
**Time Spent:** 00:01:26  
**IP Address:** 207.148.173.66

Page 1

**Q1** How important is Saskatoon Mountain PRA to your quality of life? **47**

**Q2** How often do you visit Saskatoon Mountain PRA? **Once every few years**

**Q3** Do you feel that Saskatoon Mountain PRA has mostly positive impacts on your life? **No**

**Q4** What are some ways that Saskatoon Mountain PRA positively impacts your life?

Have not heard of it but am intrigued...

**Q5** Do you feel that Saskatoon Mountain PRA has mostly negative impacts on your life? **No**

**Q6** What are some ways that Saskatoon Mountain PRA negatively impacts your life?

N/a

**Q7** Do you feel that Alberta Parks offers opportunities for you to discuss any issue or interest that you have regarding Saskatoon Mountain PRA? **Yes**

**Q8** Do you feel like you have been able to influence management decisions for Saskatoon Mountain PRA? **No,**  
Please tell us why or why not...:  
I'm from  
YEG

**Q9** Please enter your email if you would you like to be contacted about the upcoming Open House for Saskatoon Mountain PRA management planning. **Respondent skipped this question**

## #3

**COMPLETE**

**Collector:** Web Link 1 (Web Link)  
**Started:** Saturday, October 27, 2018 11:45:23 AM  
**Last Modified:** Saturday, October 27, 2018 11:47:48 AM  
**Time Spent:** 00:02:25  
**IP Address:** 207.148.173.66

Page 1

**Q1** How important is Saskatoon Mountain PRA to your quality of life? **80**

**Q2** How often do you visit Saskatoon Mountain PRA? **Once every few years**

**Q3** Do you feel that Saskatoon Mountain PRA has mostly positive impacts on your life? **Yes**

**Q4** What are some ways that Saskatoon Mountain PRA positively impacts your life?

Walking trails, spending time outdoors, relaxing.

**Q5** Do you feel that Saskatoon Mountain PRA has mostly negative impacts on your life? **No**

**Q6** What are some ways that Saskatoon Mountain PRA negatively impacts your life?

Lack of year-round accessibility.

**Q7** Do you feel that Alberta Parks offers opportunities for you to discuss any issue or interest that you have regarding Saskatoon Mountain PRA? **Yes**

**Q8** Do you feel like you have been able to influence management decisions for Saskatoon Mountain PRA? **No**

**Q9** Please enter your email if you would you like to be contacted about the upcoming Open House for Saskatoon Mountain PRA management planning. **Respondent skipped this question**

## #4

**COMPLETE**

**Collector:** Web Link 1 (Web Link)  
**Started:** Saturday, October 27, 2018 3:37:47 PM  
**Last Modified:** Saturday, October 27, 2018 3:40:05 PM  
**Time Spent:** 00:02:18  
**IP Address:** 207.148.173.66

Page 1

**Q1** How important is Saskatoon Mountain PRA to your quality of life? **52**

**Q2** How often do you visit Saskatoon Mountain PRA? **Once every few years**

**Q3** Do you feel that Saskatoon Mountain PRA has mostly positive impacts on your life? **Yes**

**Q4** What are some ways that Saskatoon Mountain PRA positively impacts your life?

creates jobs and usable space

**Q5** Do you feel that Saskatoon Mountain PRA has mostly negative impacts on your life? **No**

**Q6** What are some ways that Saskatoon Mountain PRA negatively impacts your life?

none

**Q7** Do you feel that Alberta Parks offers opportunities for you to discuss any issue or interest that you have regarding Saskatoon Mountain PRA? **Yes**

**Q8** Do you feel like you have been able to influence management decisions for Saskatoon Mountain PRA? **Yes**

**Q9** Please enter your email if you would you like to be contacted about the upcoming Open House for Saskatoon Mountain PRA management planning. **Respondent skipped this question**

## #5

**COMPLETE**

**Collector:** Web Link 1 (Web Link)  
**Started:** Saturday, October 27, 2018 4:28:44 PM  
**Last Modified:** Saturday, October 27, 2018 4:29:12 PM  
**Time Spent:** 00:00:28  
**IP Address:** 207.148.173.66

Page 1

<b>Q1</b> How important is Saskatoon Mountain PRA to your quality of life?	<b>54</b>
<b>Q2</b> How often do you visit Saskatoon Mountain PRA?	<b>Once every few years</b>
<b>Q3</b> Do you feel that Saskatoon Mountain PRA has mostly positive impacts on your life?	<b>Yes</b>
<b>Q4</b> What are some ways that Saskatoon Mountain PRA positively impacts your life?	<b>Respondent skipped this question</b>
<b>Q5</b> Do you feel that Saskatoon Mountain PRA has mostly negative impacts on your life?	<b>No</b>
<b>Q6</b> What are some ways that Saskatoon Mountain PRA negatively impacts your life?	<b>Respondent skipped this question</b>
<b>Q7</b> Do you feel that Alberta Parks offers opportunities for you to discuss any issue or interest that you have regarding Saskatoon Mountain PRA?	<b>Yes</b>
<b>Q8</b> Do you feel like you have been able to influence management decisions for Saskatoon Mountain PRA?	<b>No</b>
<b>Q9</b> Please enter your email if you would you like to be contacted about the upcoming Open House for Saskatoon Mountain PRA management planning.	<b>Respondent skipped this question</b>

#6

**COMPLETE**

**Collector:** Web Link 1 (Web Link)  
**Started:** Sunday, October 28, 2018 9:33:37 AM  
**Last Modified:** Sunday, October 28, 2018 9:39:31 AM  
**Time Spent:** 00:05:54  
**IP Address:** 207.148.173.66

Page 1

**Q1** How important is Saskatoon Mountain PRA to your quality of life? **50**

**Q2** How often do you visit Saskatoon Mountain PRA? **Once every few years**

**Q3** Do you feel that Saskatoon Mountain PRA has mostly positive impacts on your life? **No**

**Q4** What are some ways that Saskatoon Mountain PRA positively impacts your life?

I like to check out different parks and the sites

**Q5** Do you feel that Saskatoon Mountain PRA has mostly negative impacts on your life? **No**

**Q6** What are some ways that Saskatoon Mountain PRA negatively impacts your life?

Non

**Q7** Do you feel that Alberta Parks offers opportunities for you to discuss any issue or interest that you have regarding Saskatoon Mountain PRA?

**Yes,**

How would you like to be able to engage with Alberta Parks?:

Saskatoon mountain needs a view point above the trees so that there is 360 view of the area

**Q8** Do you feel like you have been able to influence management decisions for Saskatoon Mountain PRA?

**No**

**Q9** Please enter your email if you would like to be contacted about the upcoming Open House for Saskatoon Mountain PRA management planning.

burdess@telus.net



#7

**COMPLETE**

**Collector:** Web Link 1 (Web Link)  
**Started:** Sunday, October 28, 2018 12:13:42 PM  
**Last Modified:** Sunday, October 28, 2018 12:15:05 PM  
**Time Spent:** 00:01:23  
**IP Address:** 207.148.173.66

Page 1

**Q1** How important is Saskatoon Mountain PRA to your quality of life? **79**

**Q2** How often do you visit Saskatoon Mountain PRA? **Multiple times per year**

**Q3** Do you feel that Saskatoon Mountain PRA has mostly positive impacts on your life? **Yes**

**Q4** What are some ways that Saskatoon Mountain PRA positively impacts your life?

A place to walk and clear the head and get exercise

**Q5** Do you feel that Saskatoon Mountain PRA has mostly negative impacts on your life? **No**

**Q6** What are some ways that Saskatoon Mountain PRA negatively impacts your life? **Respondent skipped this question**

**Q7** Do you feel that Alberta Parks offers opportunities for you to discuss any issue or interest that you have regarding Saskatoon Mountain PRA? **Yes,**  
 How would you like to be able to engage with Alberta Parks?:  
 Make the park a friendly clean place,

**Q8** Do you feel like you have been able to influence management decisions for Saskatoon Mountain PRA? **Yes**

**Q9** Please enter your email if you would you like to be contacted about the upcoming Open House for Saskatoon Mountain PRA management planning. **Respondent skipped this question**

#8

**COMPLETE**

**Collector:** Web Link 1 (Web Link)  
**Started:** Monday, October 29, 2018 7:57:34 AM  
**Last Modified:** Monday, October 29, 2018 8:02:20 AM  
**Time Spent:** 00:04:46  
**IP Address:** 142.229.115.118

Page 1

**Q1** How important is Saskatoon Mountain PRA to your quality of life? **85**

**Q2** How often do you visit Saskatoon Mountain PRA? **Multiple times per year**

**Q3** Do you feel that Saskatoon Mountain PRA has mostly positive impacts on your life? **Yes**

**Q4** What are some ways that Saskatoon Mountain PRA positively impacts your life?

Native habitat for Boreal songbirds and raptors, owls, ungulates and unique plant assemblage.

**Q5** Do you feel that Saskatoon Mountain PRA has mostly negative impacts on your life? **No**

**Q6** What are some ways that Saskatoon Mountain PRA negatively impacts your life?

ATV trails are unsightly and detract from experience. Huge incised ruts make trails unavailable to other users.

**Q7** Do you feel that Alberta Parks offers opportunities for you to discuss any issue or interest that you have regarding Saskatoon Mountain PRA? **Yes**

**Q8** Do you feel like you have been able to influence management decisions for Saskatoon Mountain PRA? **Yes**

**Q9** Please enter your email if you would you like to be contacted about the upcoming Open House for Saskatoon Mountain PRA management planning. **Respondent skipped this question**