



Bridging the Gap: Lawyers and Safeguarding Specialists Working Together

Kate Prestidge, Solicitor
Head of Safeguarding & Sensitive Claims

Email: Kate_prestidge@gbtpa.com

Phone:- 07858 372428

Lawyers and Safeguarding

- The Two Hats I wear...
- **Representing organisations – complex civil claims:-**
 - Abuse: CSE, Trafficking, Modern Slavery
 - Human Rights Act breaches
 - Mental Health: attempted and completed suicides

Clients Include:-

- Charities
- Schools
- HEI
- NGB
- Sports Organisations
- LA Children's Services

Safeguarding Advice – training & practical experience



Proactive Safeguarding

- An opportunity to shape and prevent abuse
- Proactive not reactive support
- **Child Protection Policy** – Drafting when no policies existed previously
- **Revised CP & Safeguarding Policy** – Re-drafting policies and identifying nuanced risks presenting within specific organisations



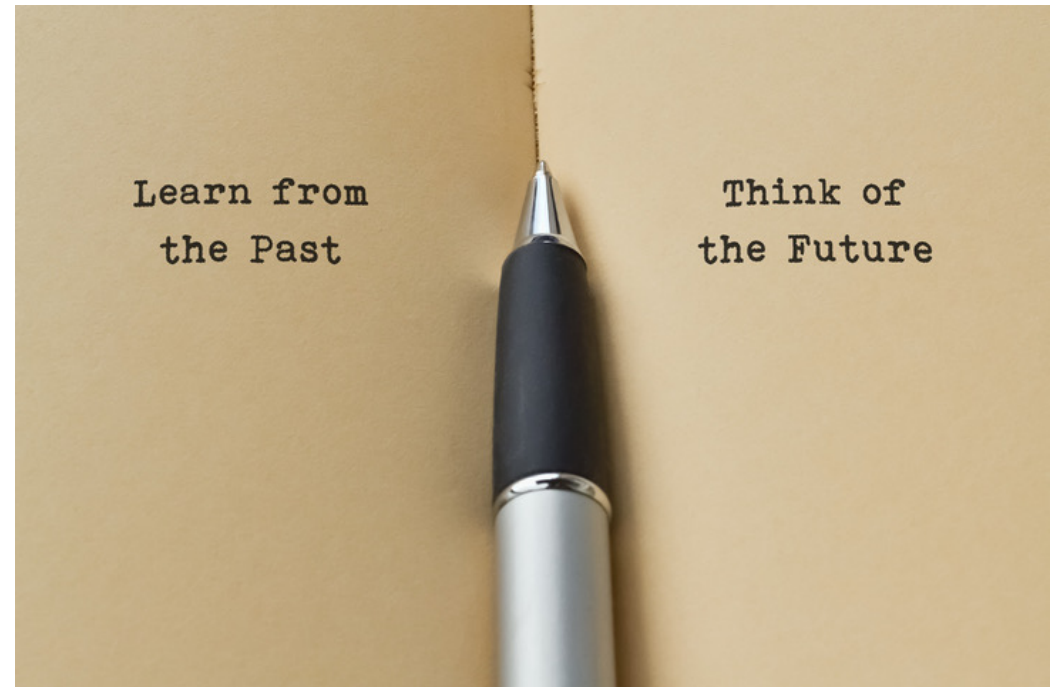
Live Safeguarding Advice

- The cases that keep you awake at night..
- Urgent in nature. A sounding board and a strong steer
- **Safeguarding Resistance** – developmental disability defences
- **Consent & Determination of Allegations** – alleged sexual misconduct & matters of consent particularly in Higher Educational Institutions
- **Being a decisive voice in an area where there are many shades of grey**



Reactive Safeguarding

- An opportunity to alter the course of future events
- Learning the hard way from past omissions
- Child deaths and serious incident reports
- Inadequate Ofsted Inspections
- Not always as clear-cut as it may appear

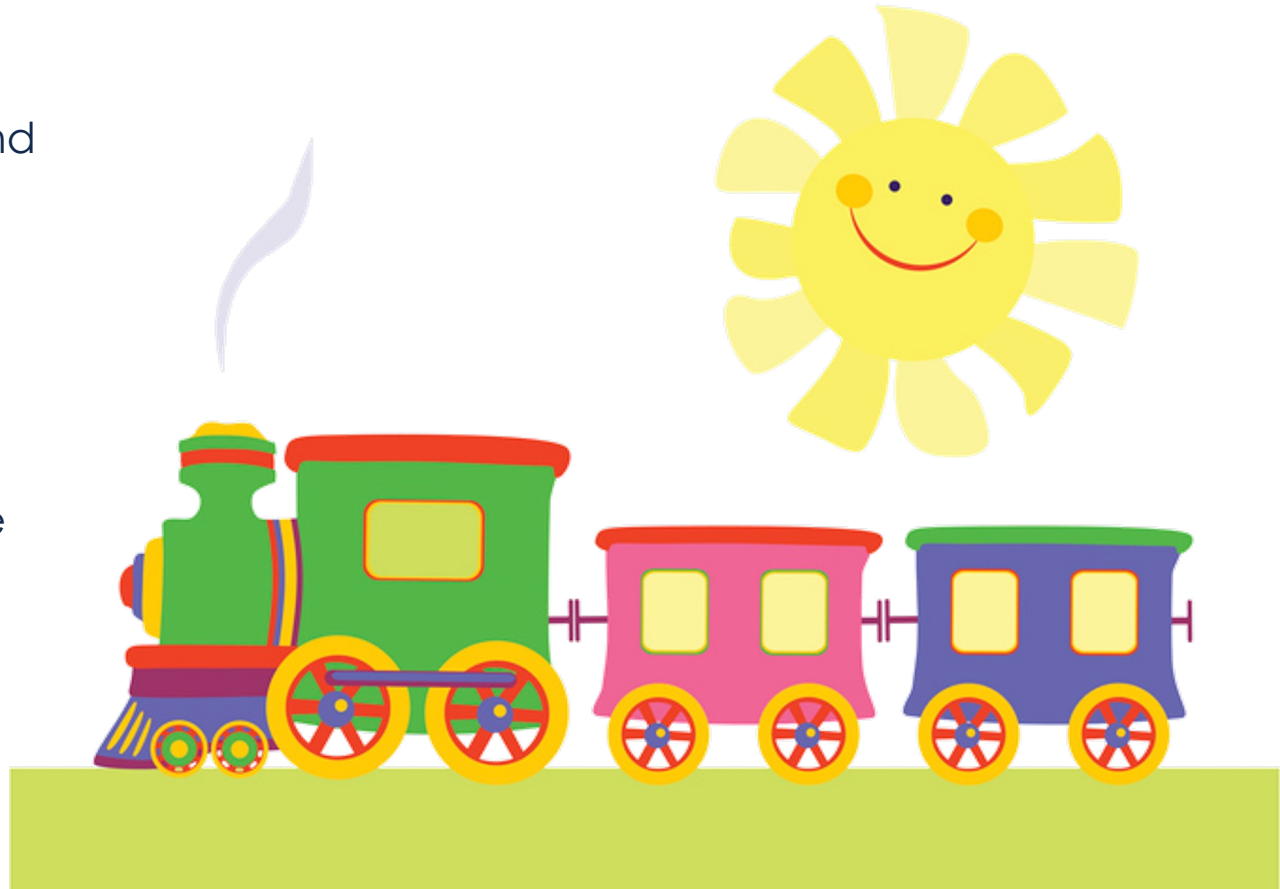


Belief System

1. **Nothing is more important than the protection of children and vulnerable young adults in our society**
2. Honest, impartial advice – but it is not always what the Client wants to hear
3. A genuinely empathetic approach
4. Sharing information and safeguarding practices is crucial to winning the war on CSA
5. **Safeguarding is Complex**

Resistance in Safeguarding

- Increased resistance to safeguarding investigations and involvement
- Safeguarding is a journey. It is rarely a linear line
- Tailor the messaging to your audience – deliver the safeguarding message in a 'language' your audience will understand
- Don't let your legitimate, professional curiosity be questioned



What Does Improved Safeguarding Look Like To Me?

- A firm stance in responding to **increased resistance to Safeguarding Intervention**:
 - LADO
 - Disguised compliance
 - Developmental Disabilities
 - Threats of Legal Action
- **Sharing** more knowledge between organisations
- **Knowledge** V's **Practical** Experience
- **Talking more** about child sexual abuse
- **Amber** flags and **Red** flags – joining the dots
- Embracing and encouraging **professional curiosity**
- **Collaborative** involvement in safeguarding concerns



Any Questions?

Kate Prestidge, Solicitor
Head of Safeguarding & Sensitive Claims

Email: Kate_prestidge@gbtpa.com

Phone:- 07858 372428