

HOW TO PUT ON & TAKE OFF CONTACT LENSES

Nervous? Don't be. Putting contact lenses on and taking them off is easier than you might think. It may take a few days for your eyes to get used to the feeling of wearing lenses. If you're having trouble don't force it, give yourself plenty of time to get comfortable. There's no rush, you can always try again tomorrow.

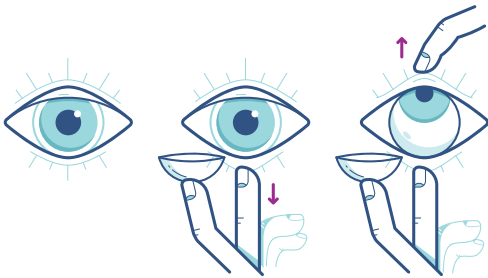
HOW TO PUT ON CONTACT LENSES IN 4 EASY STEPS



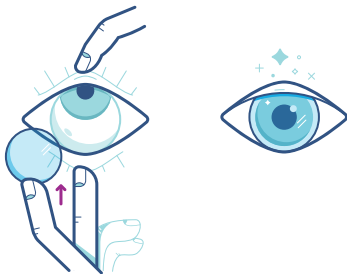
Before you start wash your hands with soap (preferably non-perfumed, anti-bacterial liquid soap), then rinse and dry your hands with a towel.



Check that the lens isn't inside out. To do this, just put the lens on the tip of your finger and hold it up to the light. If the edges flare out, it's inside out. Some lenses have a 1, 2, 3; indicator—make sure the digits aren't backwards. It should look like a bowl with straight edges.



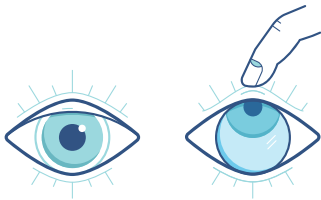
Using your right hand gently hold your upper eyelid with one finger so you don't blink or get your eyelashes in the way, and carefully pull down your lower eyelid with your other fingers.



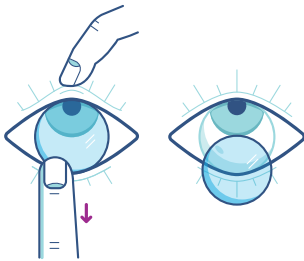
Move the contact lens toward your eye steadily. Look upward as you place it on your eye, and slowly release your eyelid and close your eye for a moment to allow the lens to settle. Repeat for your other eye.

HOW TO PUT ON & TAKE OFF CONTACT LENSES

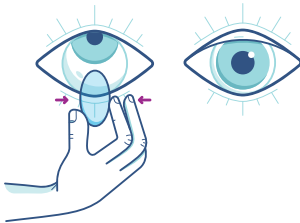
HOW TO REMOVE YOUR LENSES IN 4 EASY STEPS



Ensure your hands are clean and dry, and start with your right eye, then look up and carefully pull down your lower eyelid with your middle finger.



Bring your index finger to your eye slowly until you touch the lower edge of the lens, and slide the lens down to the lower white part of your eye.



Gently squeeze the lens between your thumb and index finger and remove it. Repeat for your left lens.



If you wear daily lenses you can throw them away, but make sure you clean and disinfect your weekly and monthly contact lenses. Don't forget you can recycle your lenses with our ACUVUE® & TerraCycle® free recycling programme.