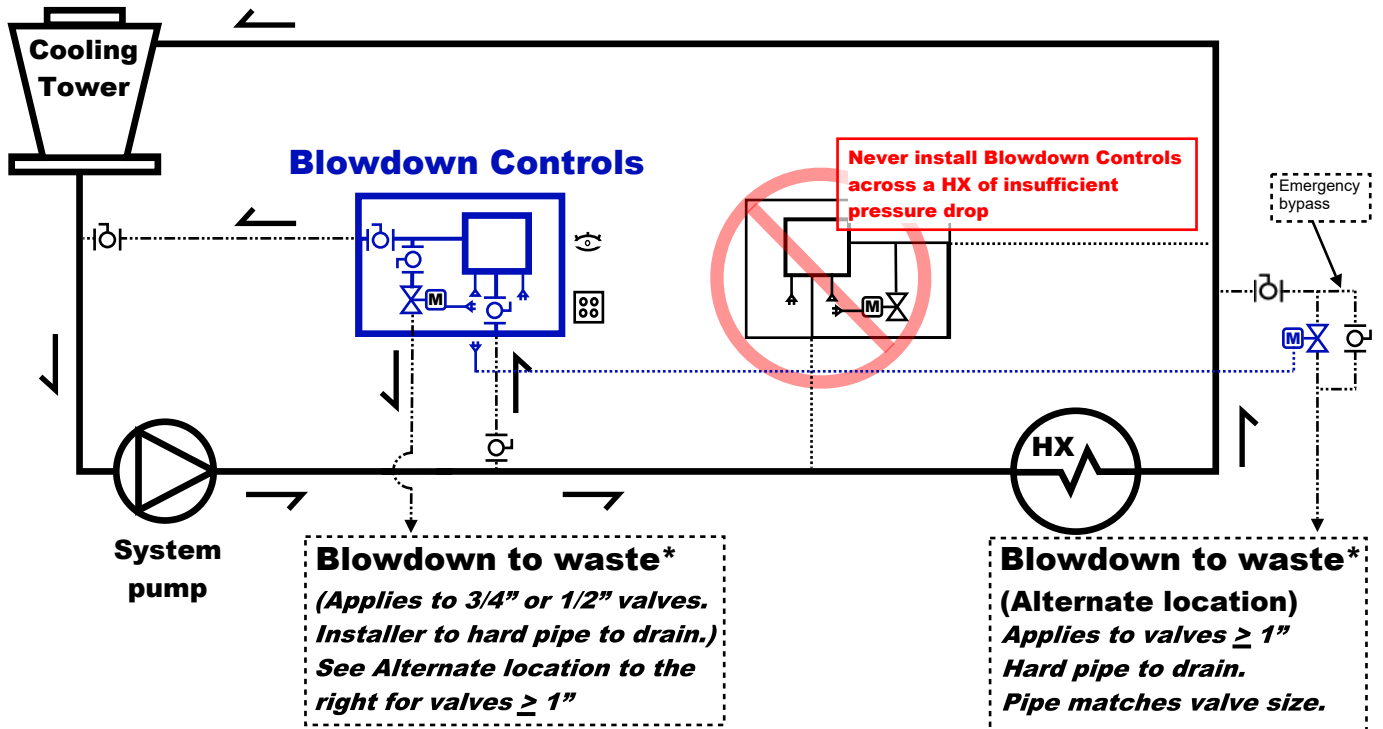


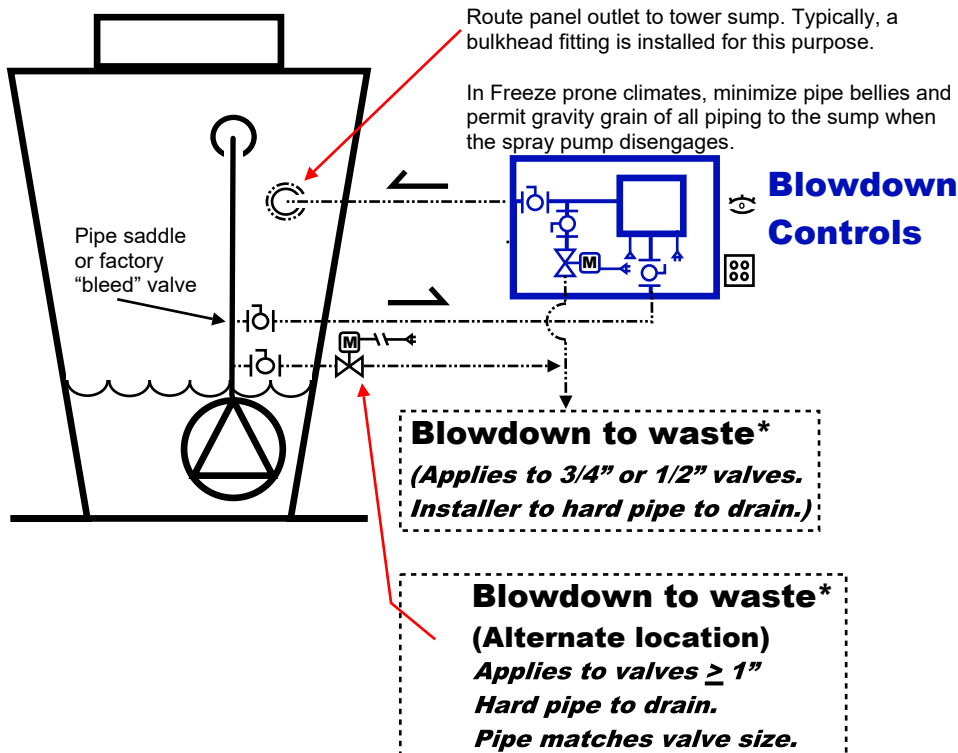
Automatic Blowdown Controls, Typical Product Installation (N.T.S.)

Water sampling valve is provided with controller sensor assembly. Inlet/ outlet orientation may vary from drawing.

Cooling Tower, conventional application



Fluid Cooler or Evaporative Condenser



Symbol Key:

- Circulation pump
- Heat exchanger, chiller
- Ball valve
- Motorized, Blowdown valve
- Offset or penetration
- Field piping.
 - 3/4" Sch 80 PVC (preferred material) to Automatic Blowdown Controls.
 - Tap and pipe to Blowdown valve must match valve size.
 - All Blowdown pipe must discharge to sanitary drain unless approved (by others).
- Male/ Female Cord
 - Electrical or Controls installer to provide a male plug for termination to the Controls when valve is installed in Alternate Location.
- 120 VAC Power supply. (Within 6" of panel, to side & not under)
- Mount eye-level

*All Blowdown should be applied to Sanitary Drain unless otherwise approved by another party.