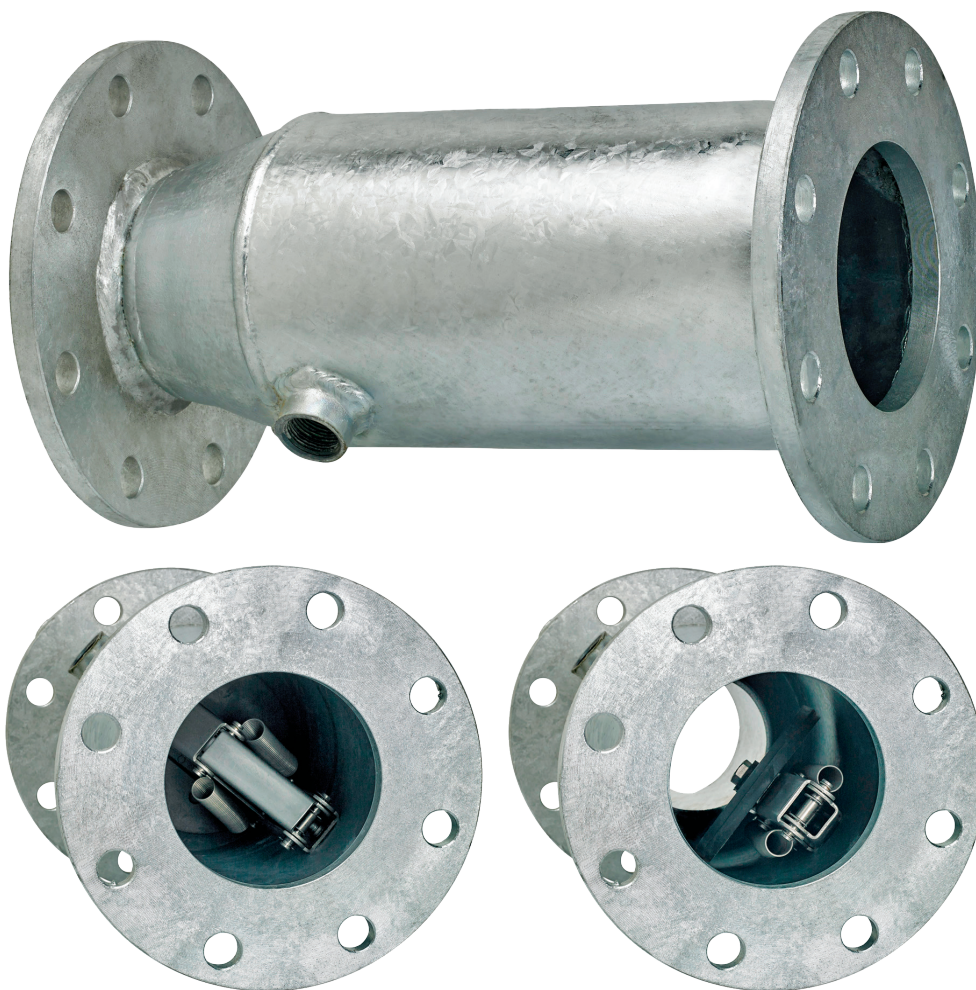


### Yardney Galvanized Check Valves feature:

- Galvanized steel body
- Stainless springs and swing arm
- Rubber-to-rubber gasket
- 3/4" NPT fitting with galvanized plug for winterization and/or draining the system during shut down
- Eliminates priming of pump when pump is shut down by retaining water in intake pipe
- ANSI flange on inlet and outlet

SPECIFICATIONS   GALVANIZED CHECK VALVES		
Model	Part Number	Description
GCV-6-8	146129007	6" ANSI Flange x Flange with 8" Seat
GCV-8-10	146129008	8" ANSI Flange x Flange with 10" Seat
GCV-10-12	146129010	10" ANSI Flange x Flange with 12" Seat
GCV-12-10	146129013	12" ANSI Flange x Flange with 10" Seat
GCV-12-12	146129014	12" ANSI Flange x Flange with 12" Seat

Recommended installation at least 10 pipe diameters away from pump.



Made in USA

Phone: 951.656.6716

Toll-Free: 800.854.4788

Fax: 951.656.3867

info@yardneyfilters.com

www.yardneyfilters.com

Industrial, Commercial & Municipal