

# HAIR AND MAKEUP MENU

— 2025 —

@fizbeauty

[www.fizbeauty.com](http://www.fizbeauty.com)



# Signature Collection

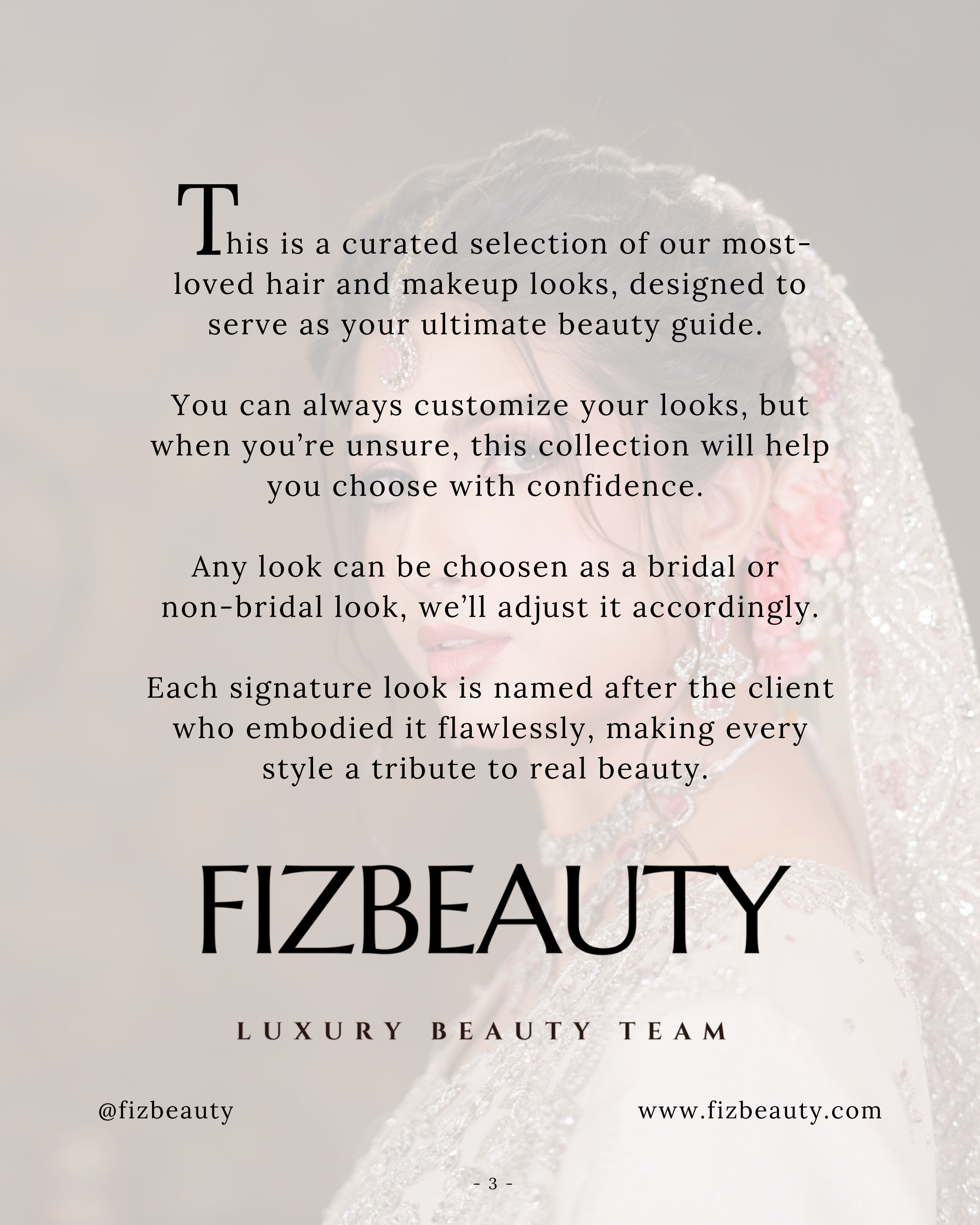
ELEGANCE & TRADITION



@fizbeauty

[www.fizbeauty.com](http://www.fizbeauty.com)





This is a curated selection of our most-loved hair and makeup looks, designed to serve as your ultimate beauty guide.

You can always customize your looks, but when you're unsure, this collection will help you choose with confidence.

Any look can be chosen as a bridal or non-bridal look, we'll adjust it accordingly.

Each signature look is named after the client who embodied it flawlessly, making every style a tribute to real beauty.

# FIZBEAUTY

LUXURY BEAUTY TEAM

@fizbeauty

[www.fizbeauty.com](http://www.fizbeauty.com)



# MAKEUP



## THE FIZA

BRIGHT, MATTE, BLUSHY,  
AND DOLL LIKE.

GLAM LEVEL: 7/10



## THE FARIYA

BRIGHT, GLOWY, BLUSHY,  
AND DOLL LIKE

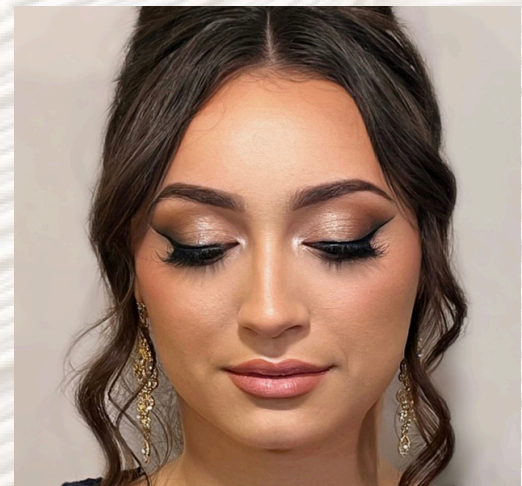
GLAM LEVEL: 8/10



## THE JOSIE

SCULPTED FACE+EYES, BRONZED,  
“THE FILTER EFFECT”

GLAM LEVEL: 9/10



## THE HURIYA

DIFFUSED EYE-LINER, SOFT BASE  
HEAVY LASHES, OMBRE LIP

GLAM LEVEL: 6/10





# MAKEUP

## THE PRIYA

SHIMMERY SMOKEY EYES  
WITH A NUDE LIP, BRONZY BASE

GLAM LEVEL: 9/10



## THE AMIRA

MATTE SMOKEY EYES,  
GLITTER LINER, SCULPTED FACE

GLAM LEVEL: 10/10



## THE ASHLEY

PEACHY GOLD, SOFT-  
SHIMMERY EYES, DEWY BASE,  
PEACHY-PINK LIP

GLAM LEVEL: 6/10



## THE MAMA

MINIMAL SHADOW, SOFT-  
DEWY BASE, CHOICE LIP

GLAM LEVEL: 5/10





# HAIR

## THE IQRA

TRADITIONAL TWISTED  
HALF UP HALF DOWN



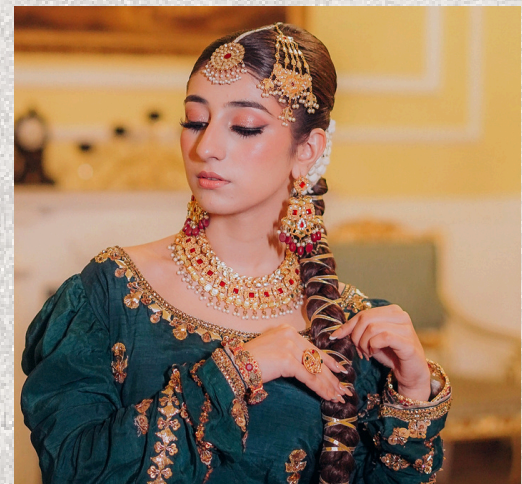
## THE FARIYA

SLEEK MIDDLE PART,  
MID TO LOW BUN



## THE MAHAM

SLEEK DECORATED BRAID,  
MIDDLE PART



## THE TOOBA

NO-PART PULLED BACK  
TEXTURED LOW-UPDO

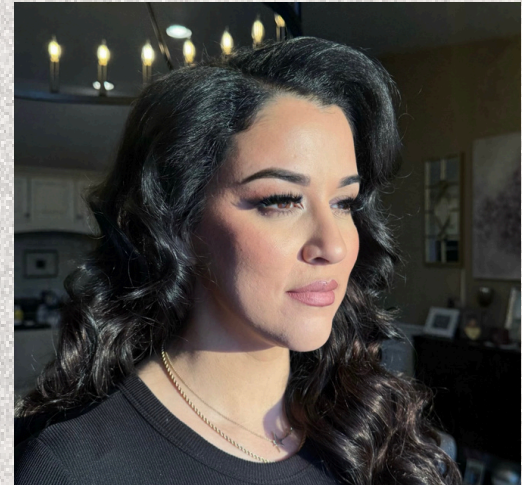




# HAIR

## THE AMAL

SIDE PART, VOLUMINOUS  
GLAM WAVES



## THE FATYMA

TEXTURED, MIDDLE PART,  
MID-LOW BUN, CRIMPED FACE  
FRAMING, LOW VEIL SETTING



## THE HUMA

MIDDLE PART, MID-LOW BUN  
ROMANTIC FACE FRAMING



## THE PRIYA

DECORATED HALF UP-  
HALF DOWN PONYTAIL





FOR THE GLAM LOVERS



Makeup: The Priya | Hair: The Maham



# Contacts

Get in touch with us!  
Specializing in South  
Asian bridal beauty, our  
expert team is here to  
make your special day  
unforgettable.



To get started, click here  
for our inquiry form, &  
we'll share our  
availability along with a  
detailed service package,  
including all the services  
we offer and pricing.  
Let's create the look of  
your dreams!

📞 +1(630)999-7266

✉️ [bookings@fizbeauty.com](mailto:bookings@fizbeauty.com)

📷 @fizbeauty



A woman with long, wavy, light brown hair is shown in profile, looking towards the right. She is wearing a vibrant green, textured dress with a gold-colored belt. Her jewelry includes a large, ornate gold earring with a diamond and a matching necklace with a large circular pendant. She is holding a small, light-colored flower in her hands. The background is a lush garden with green foliage and white flowers.

Timeless Elegance

FOR THE BEAUTY  
LOVERS

FIZBEAUTY

LUXURY BEAUTY TEAM

@fizbeauty

[www.fizbeauty.com](http://www.fizbeauty.com)