

$\text{♩} = 135$

*T. Rex / Dinosaur Blues*

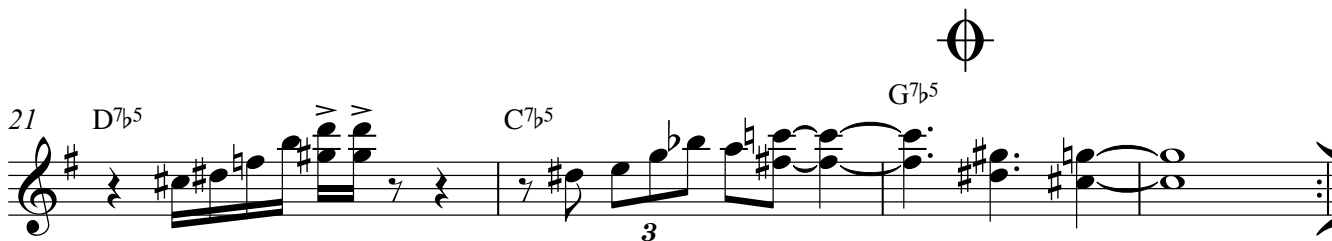
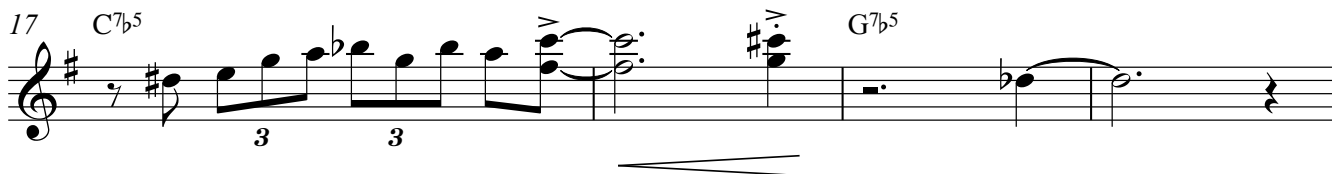
2011

12



13  $G^7b^5$

The musical notation for measure 13 is written on a single staff. It begins with a treble clef and a key signature of one sharp (F#). The measure contains a half note G4, followed by a triplet of eighth notes: A4, B4, and C5. The triplet is marked with a '3' and a bracket. The measure concludes with a half note G4. The chord symbol  $G^7b^5$  is written above the staff.



*last x rit.*