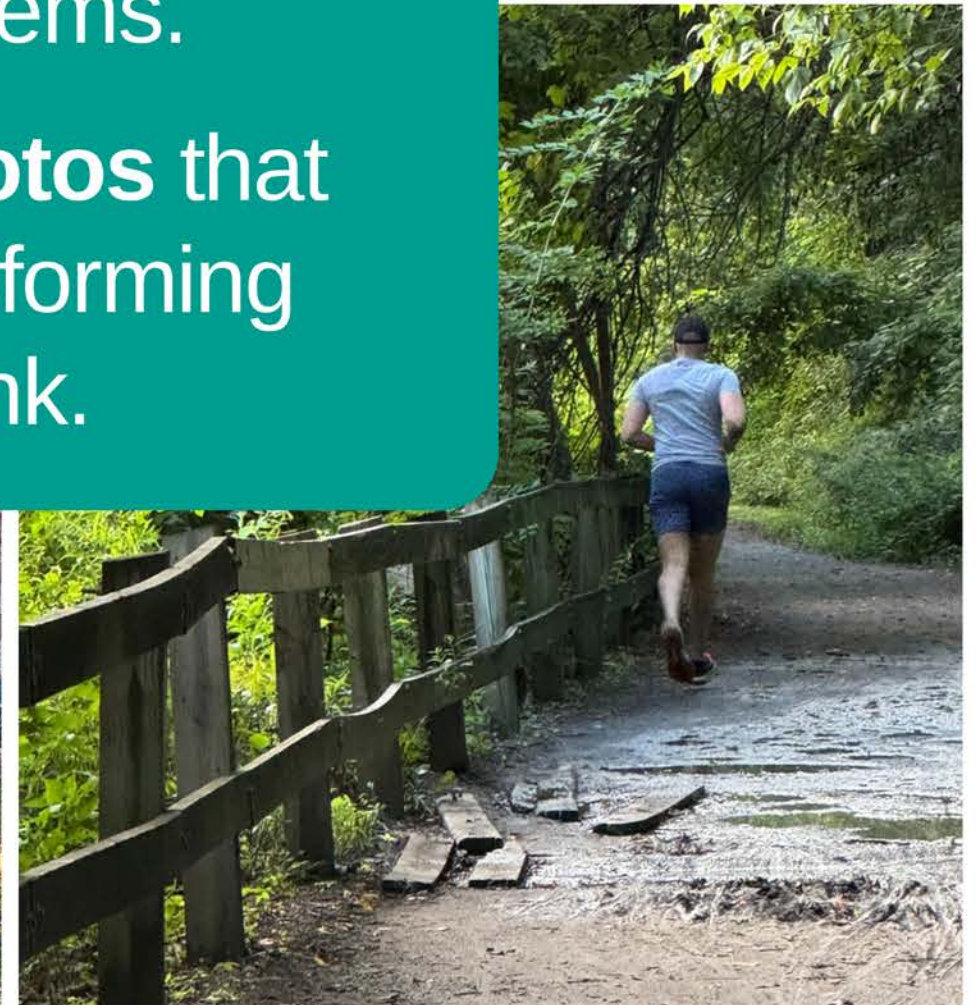
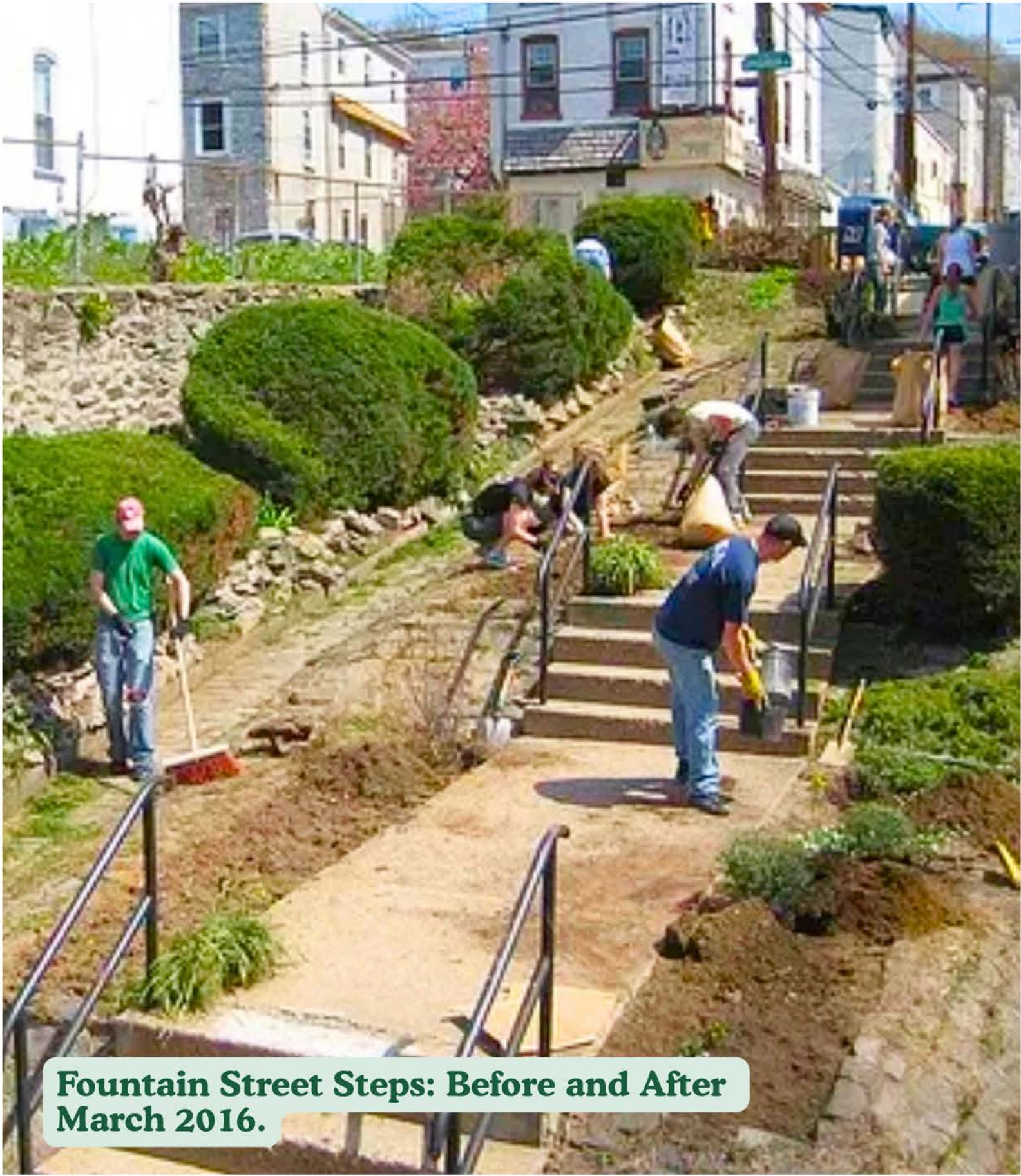


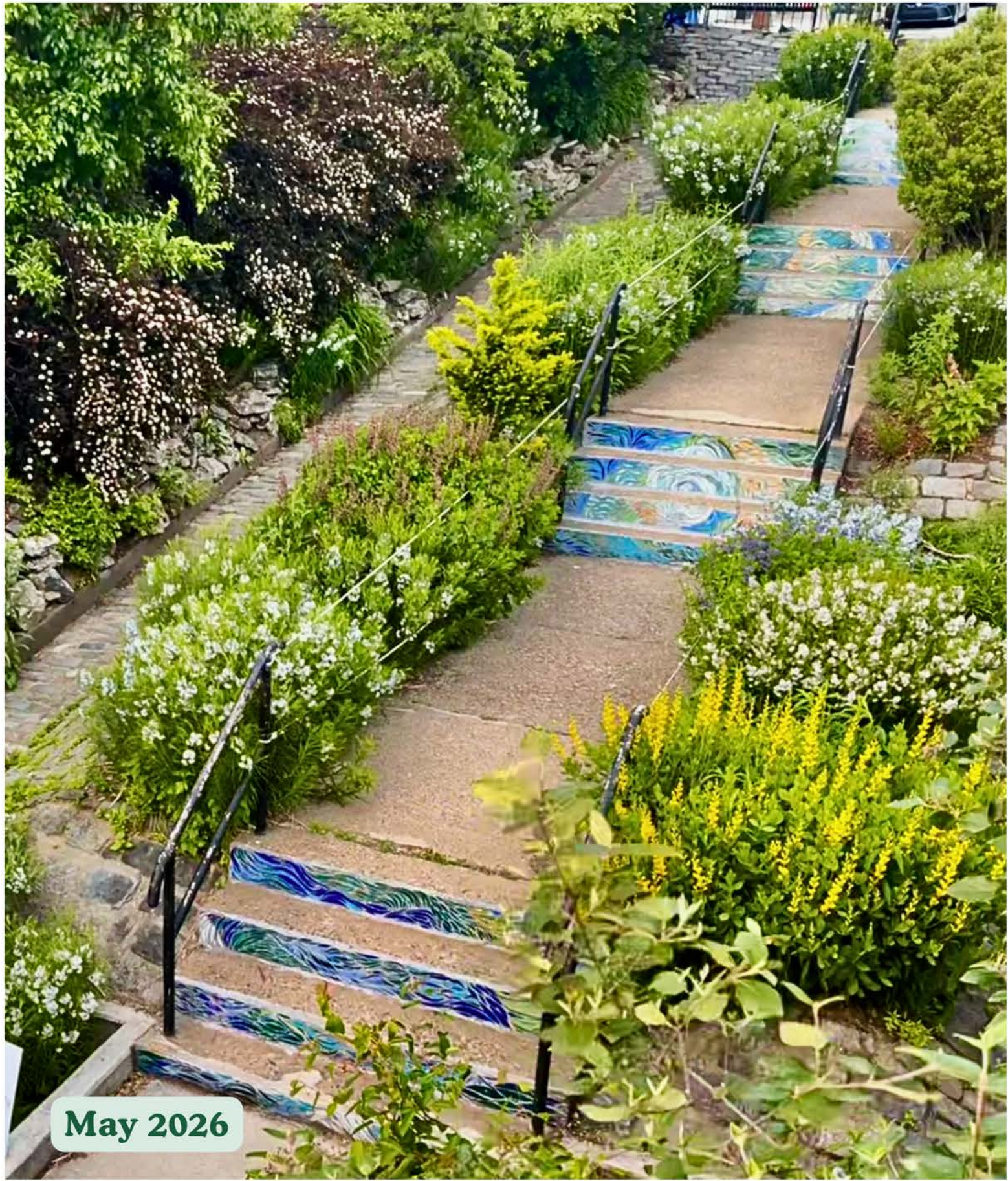
**Ecological restoration isn't one-and-done — it is a long-term investment in cleaner, more usable community spaces and healthier ecosystems.**

**Take a look these before-and-after photos that show how RMC's hands-on work is transforming parks across Roxborough and Manayunk.**

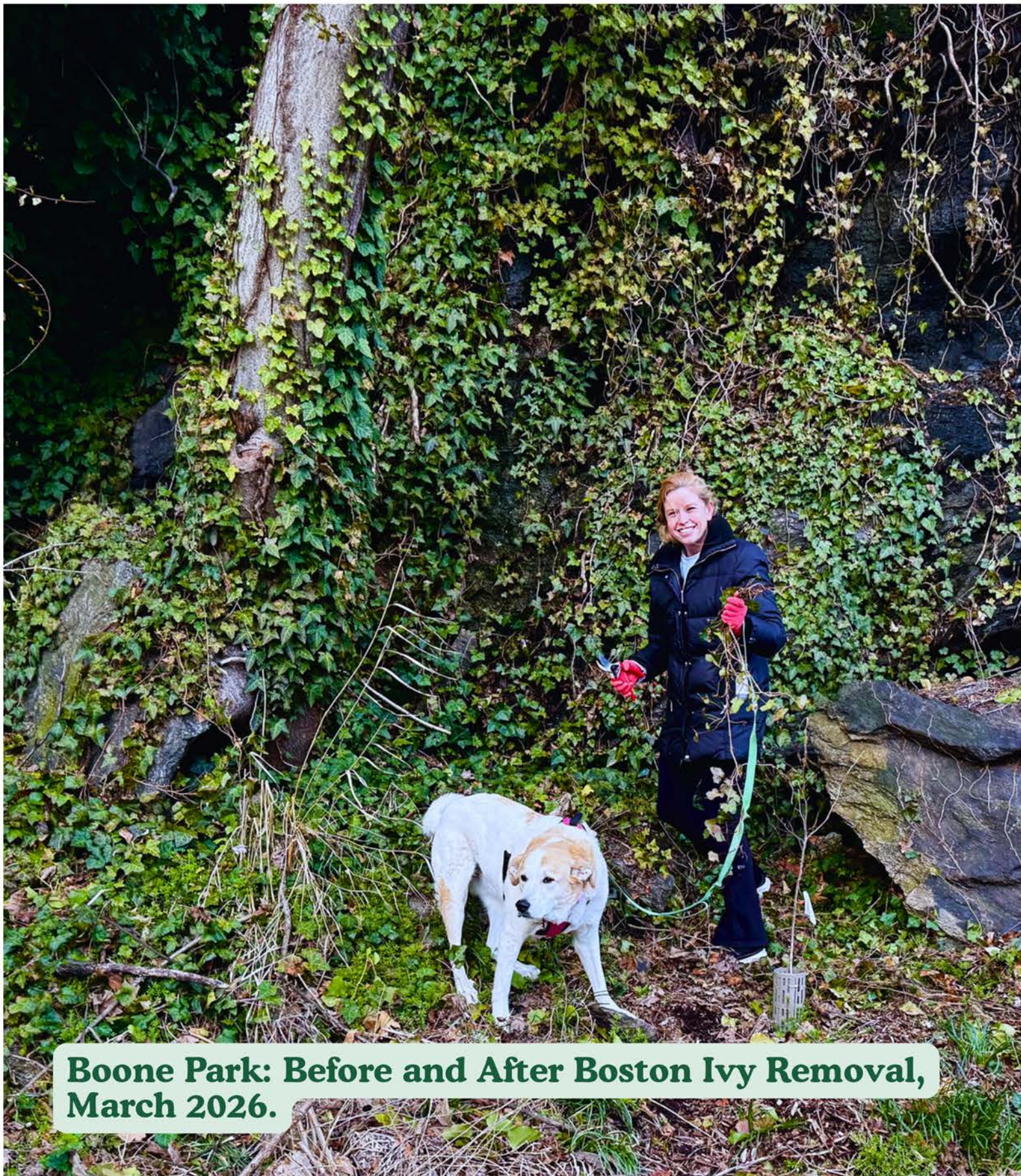




**Fountain Street Steps: Before and After  
March 2016.**

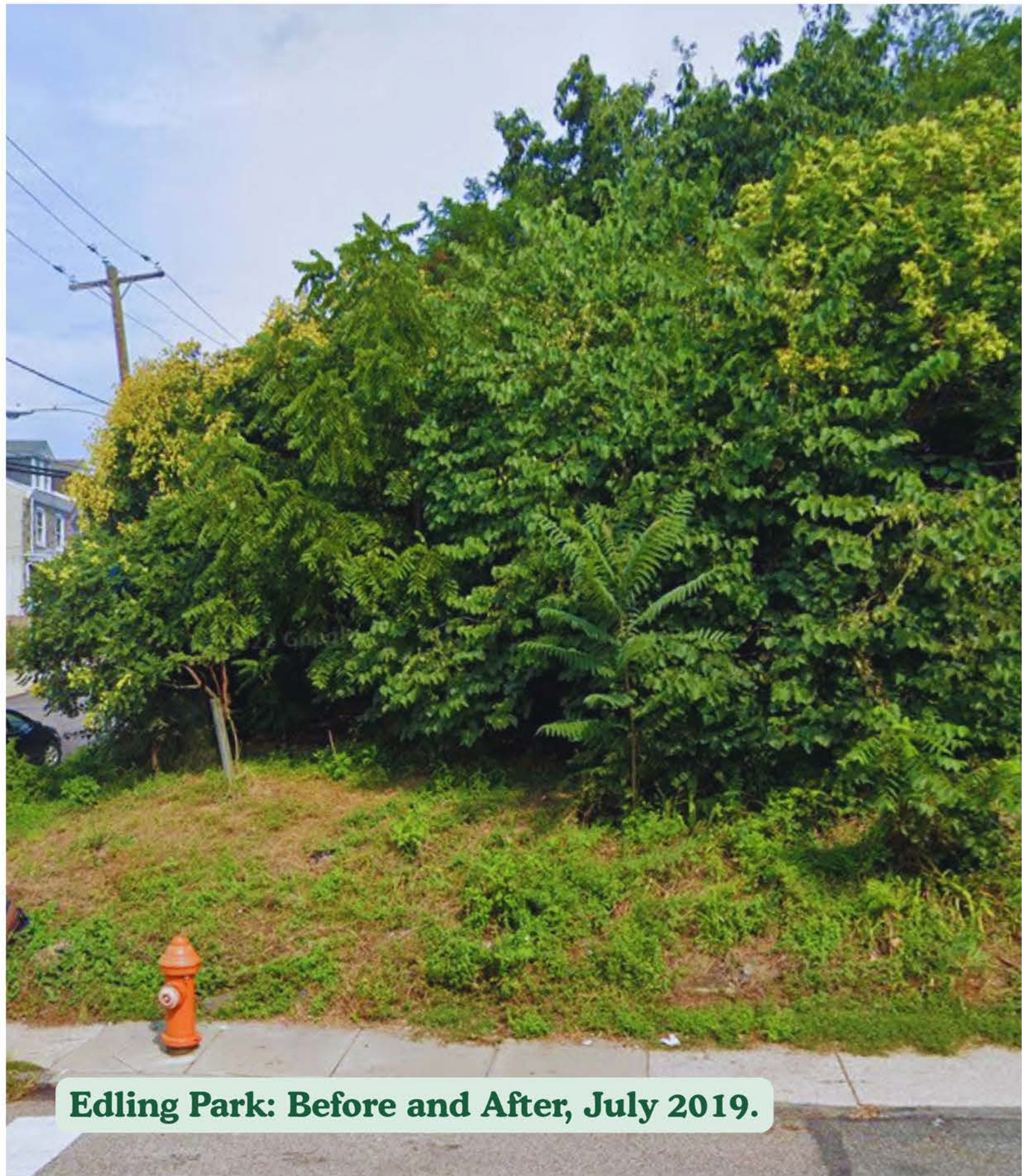


**May 2026**

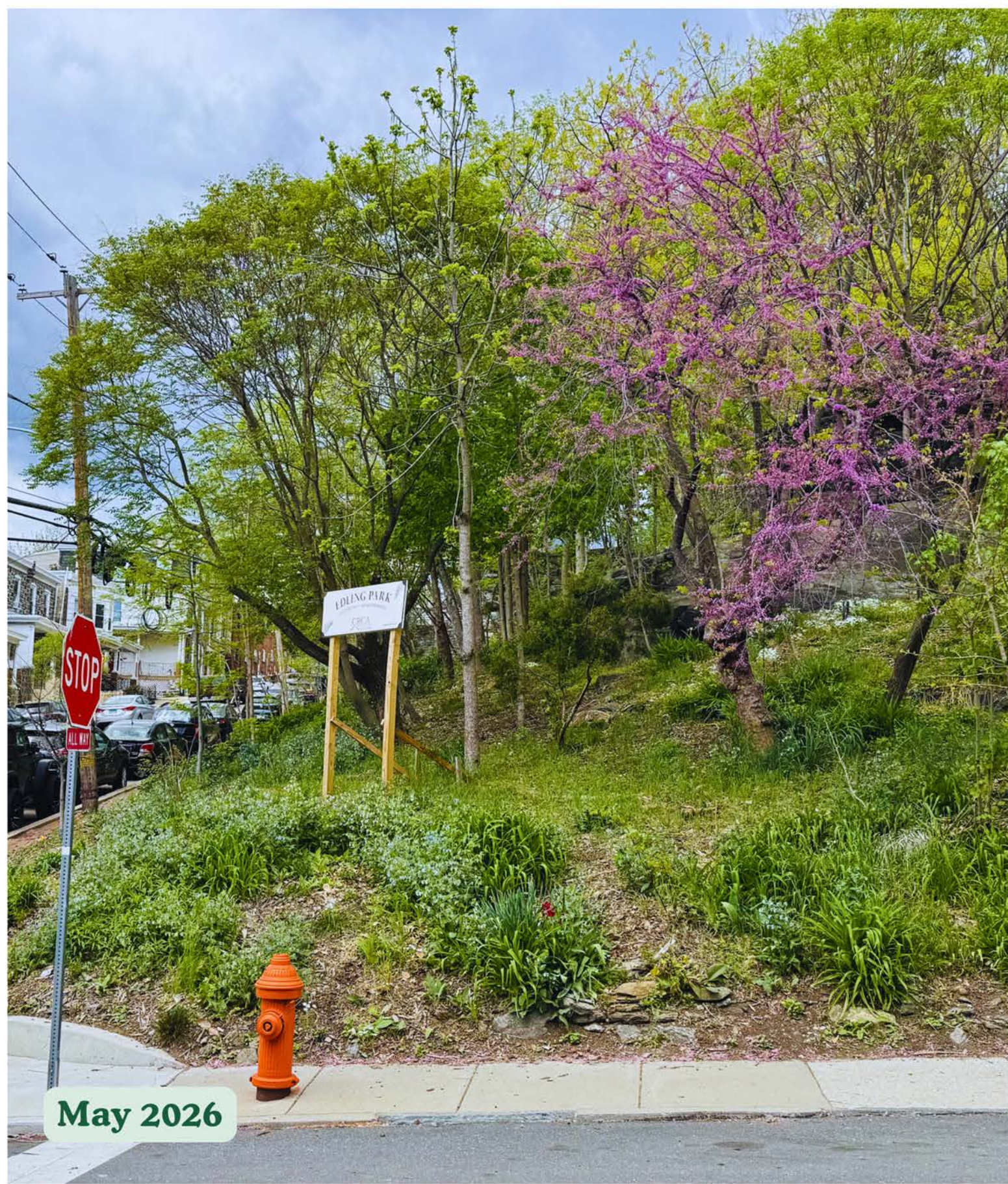


**Boone Park: Before and After Boston Ivy Removal, March 2026.**





**Edling Park: Before and After, July 2019.**



**May 2026**





**Manayunk Bridge Gardens: Before and After, May 2026.**



*Erosion control*

*Donated bricks*





**Germany Hill Park:  
Building a dead-hedge, May 2026**



**Creating a community space (placemaking), March 2026**



**Roxborough  
Manayunk  
Conservancy**

Community stewardship and ecological restoration transform both the people involved and the places they care for.

You can be part of that change — volunteer, become a Park Friend, and make a donation to support RMC's hands-on work in Roxborough–Manayunk's public green spaces