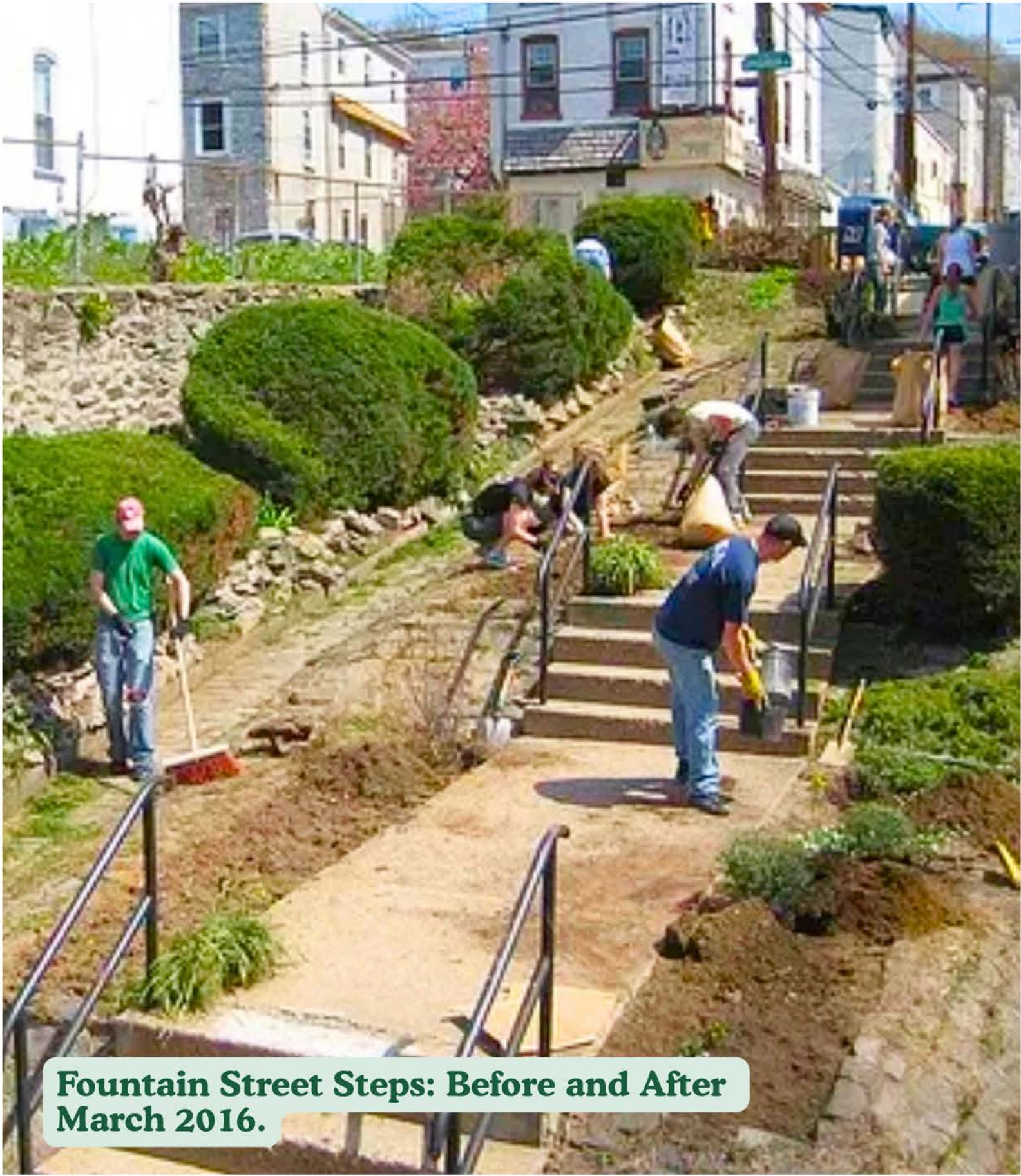
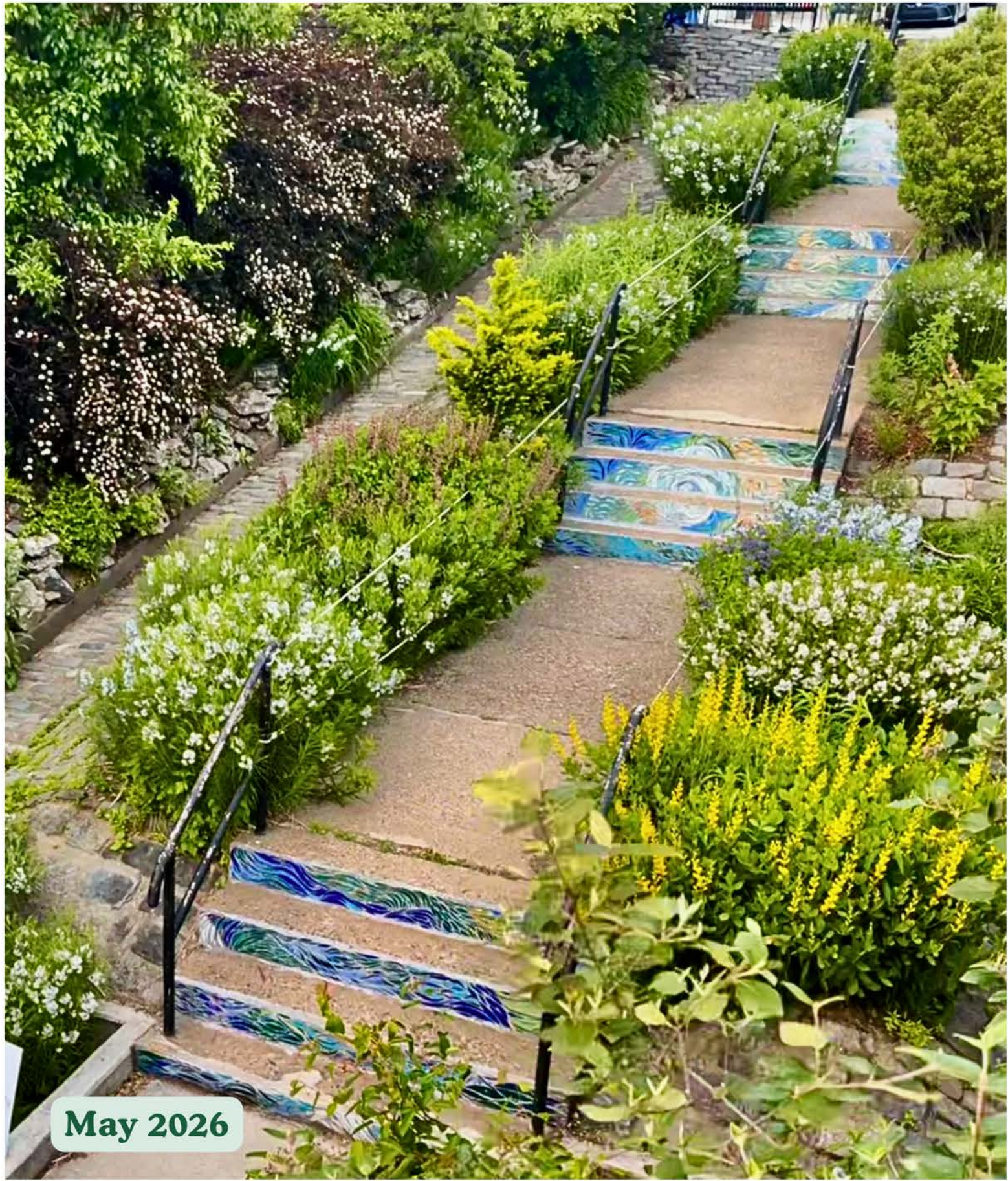


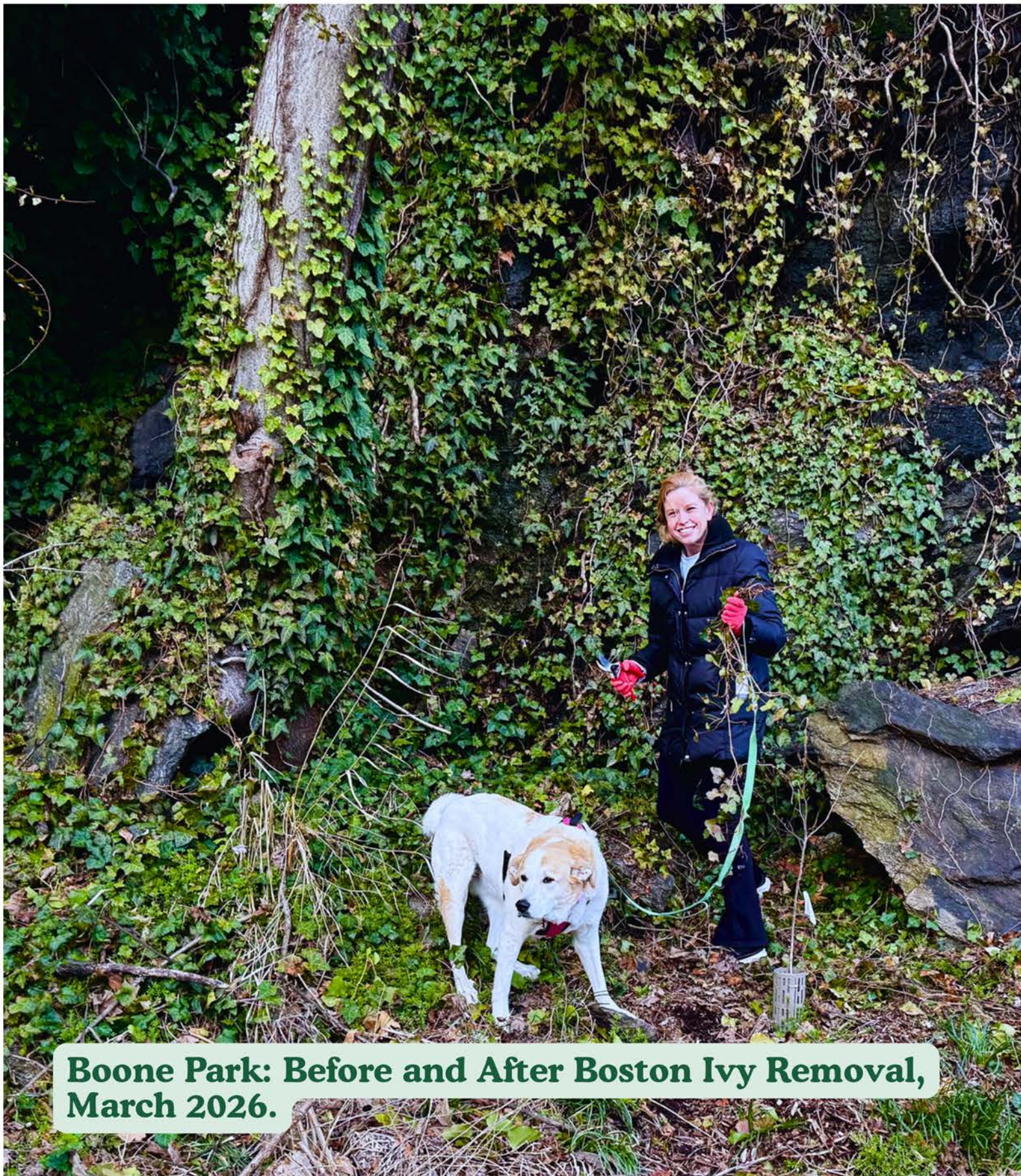
Caring for our parks isn't one-and-done —
it's a long-term investment in cleaner, more welcoming
community spaces and healthier ecosystems.
Take a look at these before-and-after photos to see
how RMC's hands-on stewardship is transforming
parks across Roxborough and Manayunk.



**Fountain Street Steps: Before and After
March 2016.**

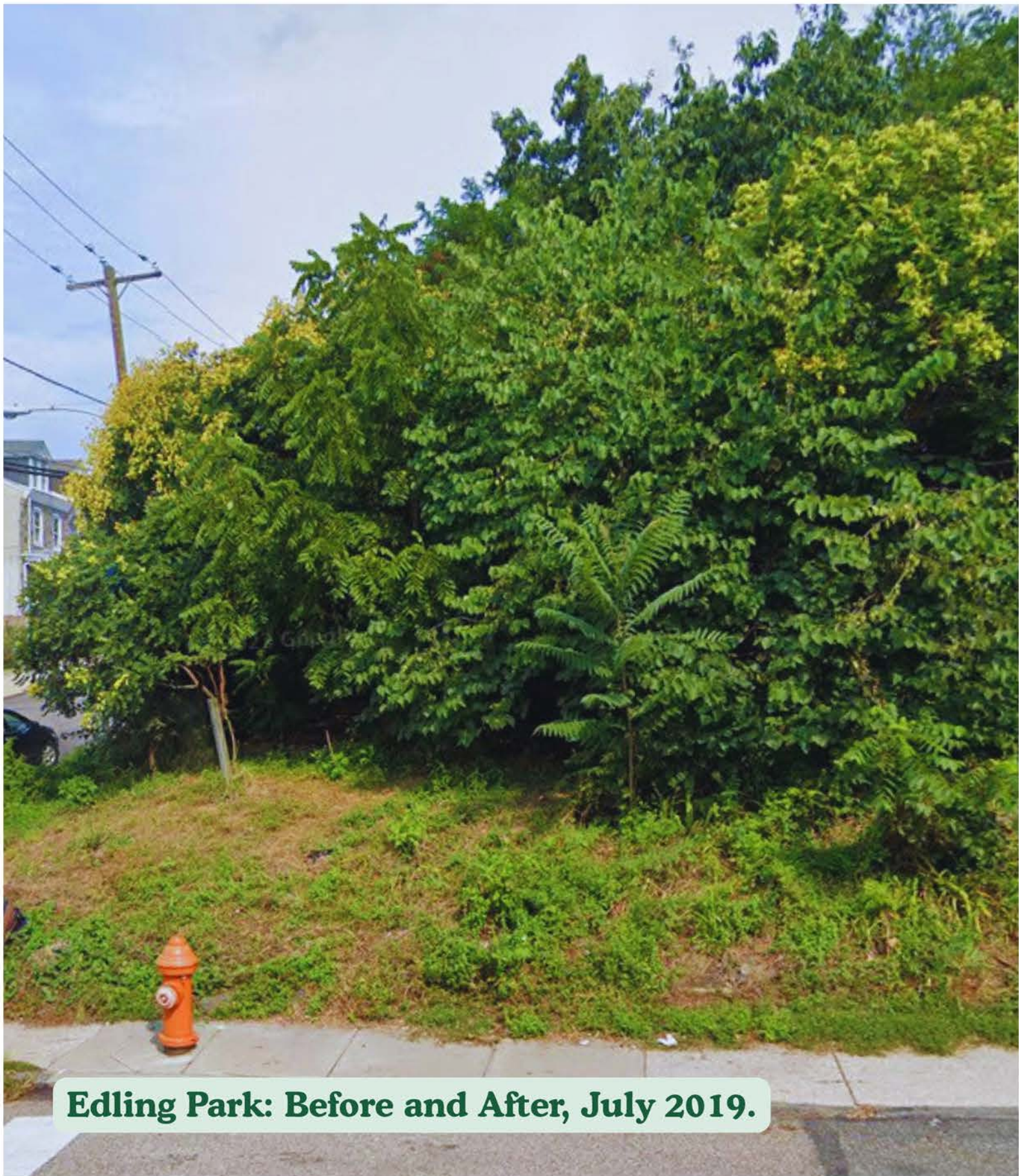


May 2026

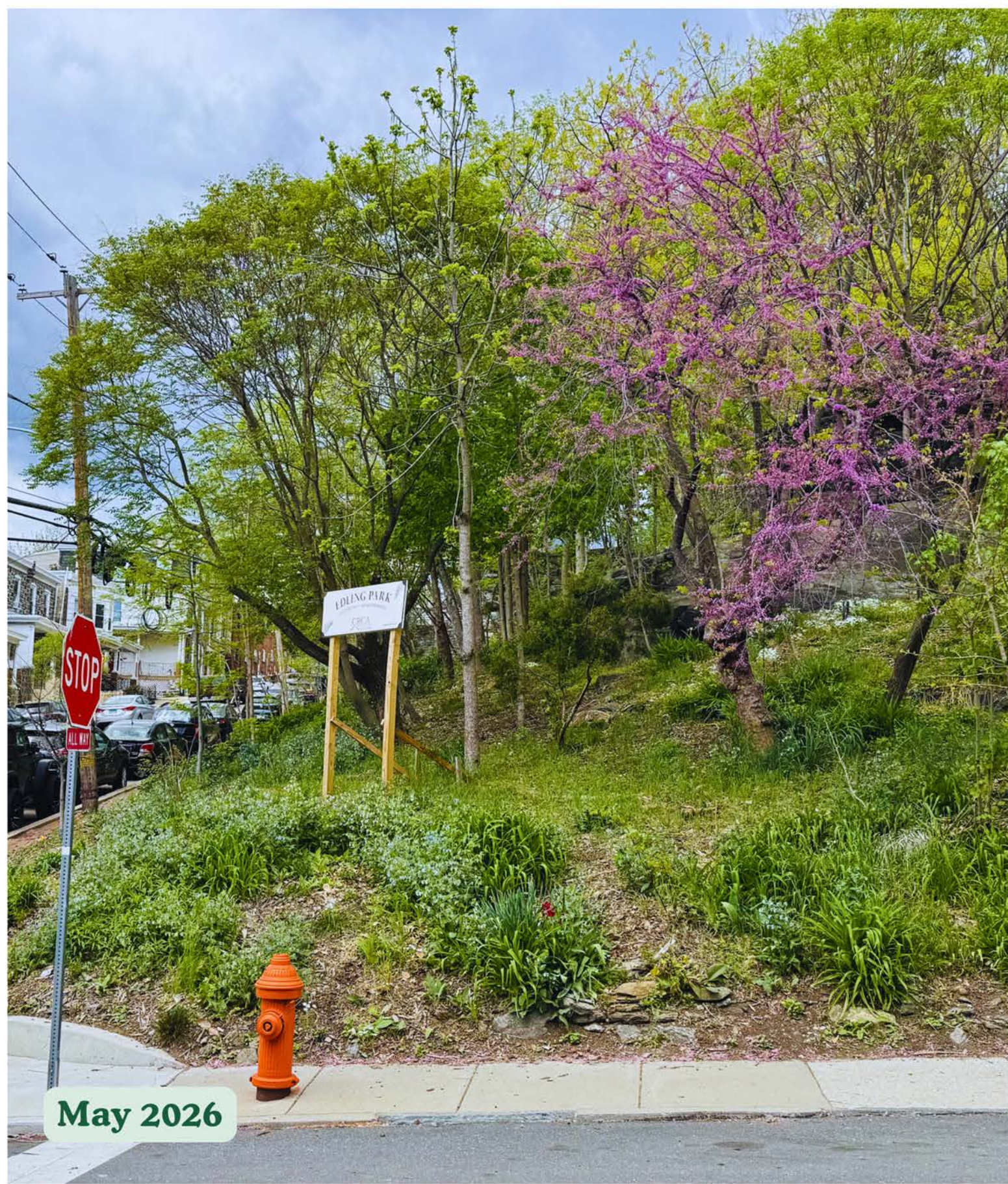


Boone Park: Before and After Boston Ivy Removal, March 2026.





Edling Park: Before and After, July 2019.



May 2026





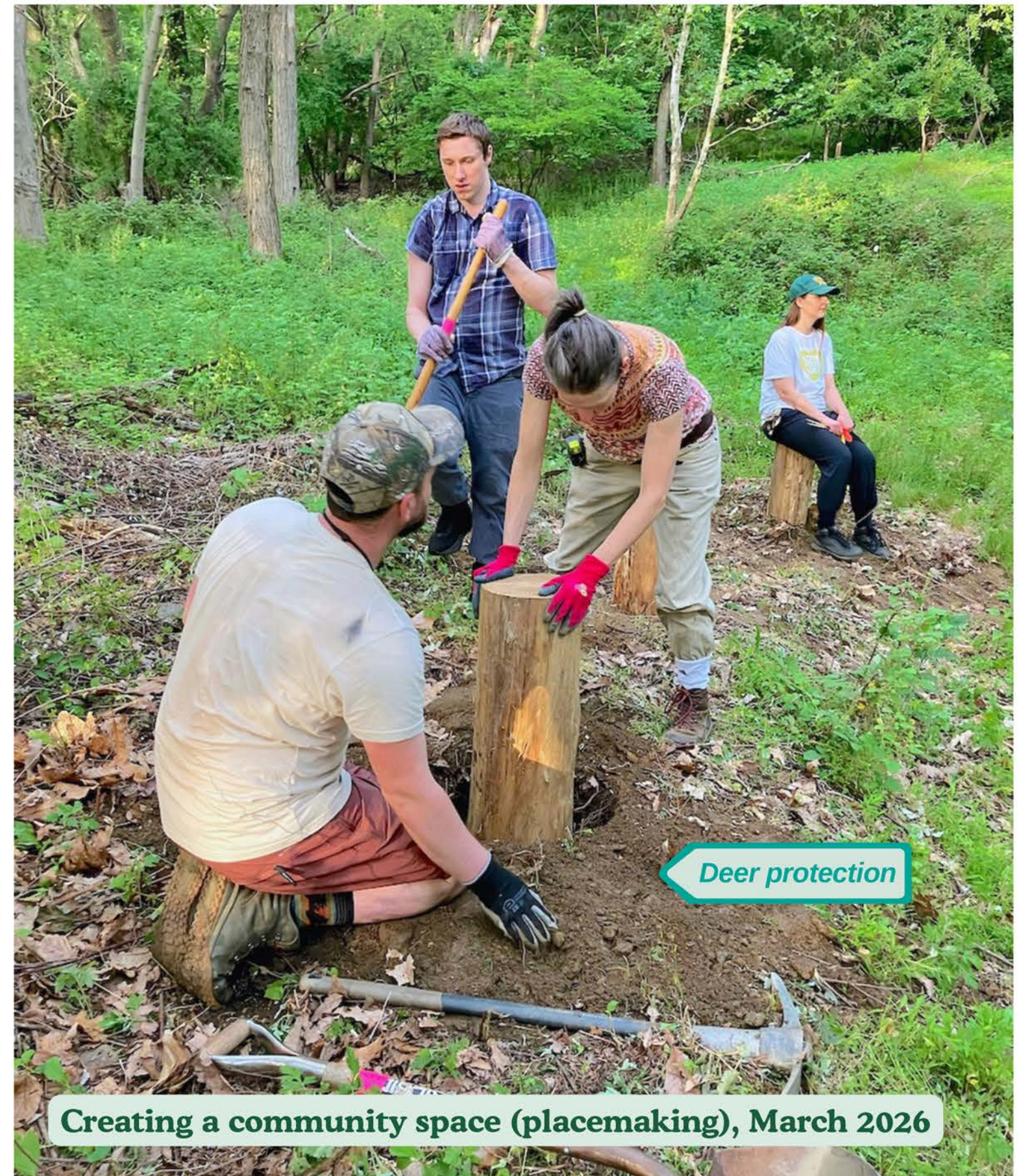
Manayunk Bridge Gardens: Before and After, May 2026.



Erosion control

Donated bricks







**Roxborough
Manayunk
Conservancy**

Community stewardship and ecological restoration transform both the people involved and the places they care for.

You can be part of that change — volunteer, become a Park Friend, and make a donation to support RMC's hands-on work in Roxborough–Manayunk's public green spaces.