



Digital connected systems for Automated Utility Detection (JULY 2020)



www.tesmec.com



TESMEC NETWORK WORKFLOW

PRODUCTION AND SELLING ACTIVITIES

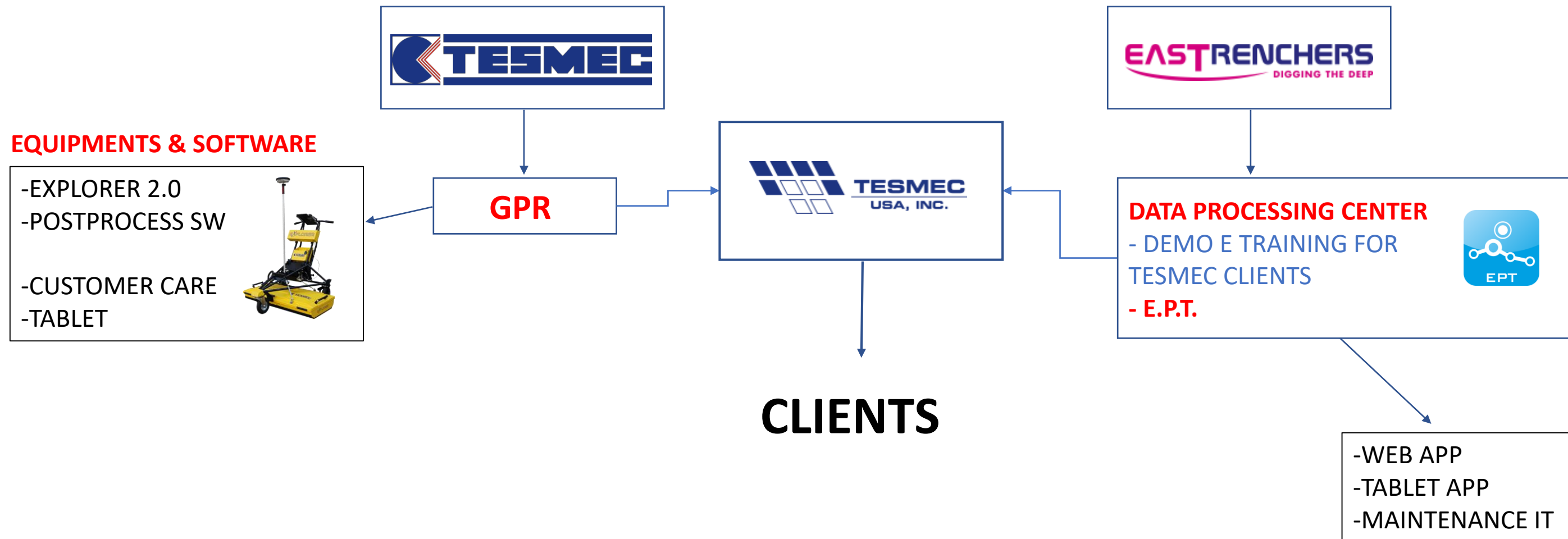


DEMO & SERVICES



TRENCHING COMPANIES UTILITY OWNERS

BUSINESS RESUME for GPR + EPT



RESPONSABILITY MATRIX/ACTIONS

ACTIONS	TESMEC	TESMEC USA	EASTRENCHERS
EPT CLIENT SUBSCRIPTION	●	-	-
APP RELEASE & MAINTENANCE	-	-	●
DB SERVER STORAGE	-		●
DATA POST PROCESSING	-	-	● Data Center
CUSTOMER CARE	●	●	-
ADMINISTRATION&LEGAL	●	-	-
UTILITY SURVEY SERVICES		●	●
MARKETING	●	●	●

EQUIPMENT FOR n. 1 TEAM

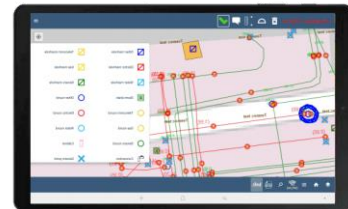
Explorer 2.0



GPS



EPT



EQUIPMENT'S RESUME:

- Nr. 1 GPR
- NR. 1 GPS
- NR. TABLET with EPT app
- DPI Device and Traffic Control

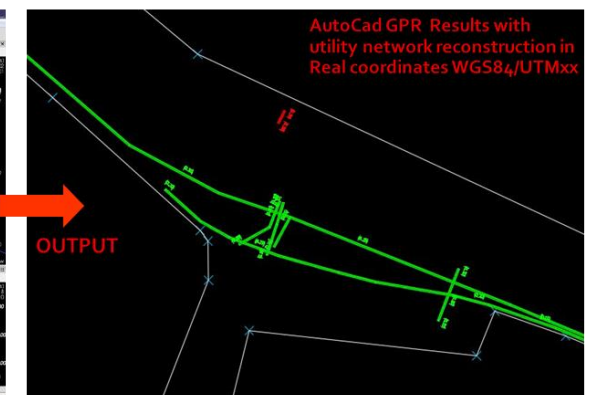
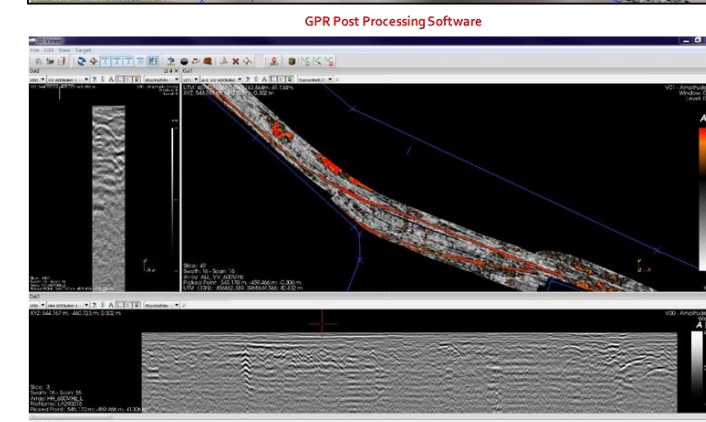
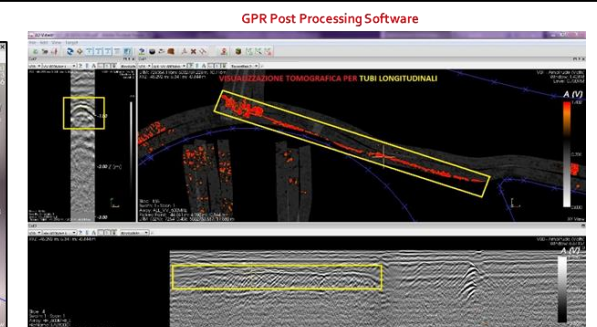
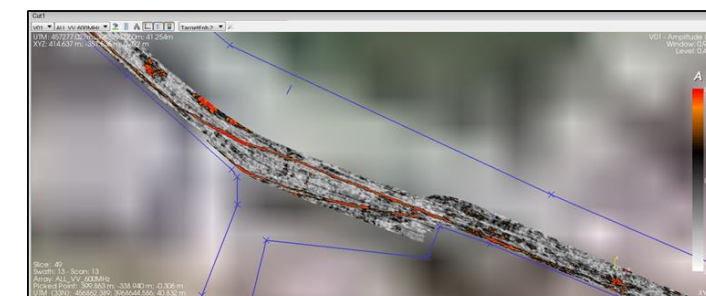
Office:

- On Line EASTRENCHERS Post Processing Data Center

TEAM COMPOSITION

Job Site:

- Nr.1 Technician for Topo survey
- Nr.1 Technician for GPR survey

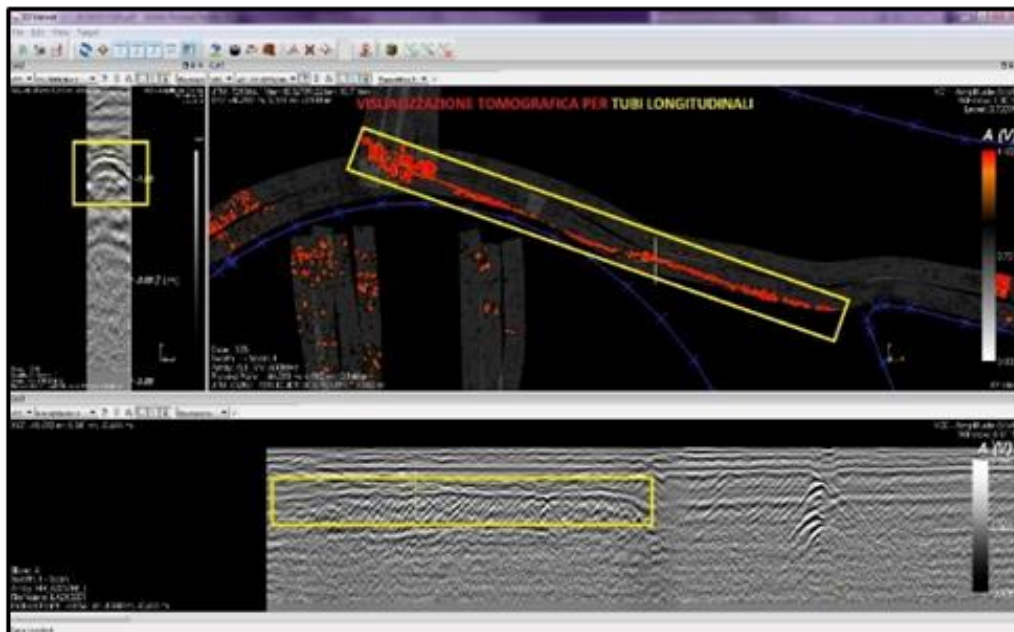


WORKFLOW

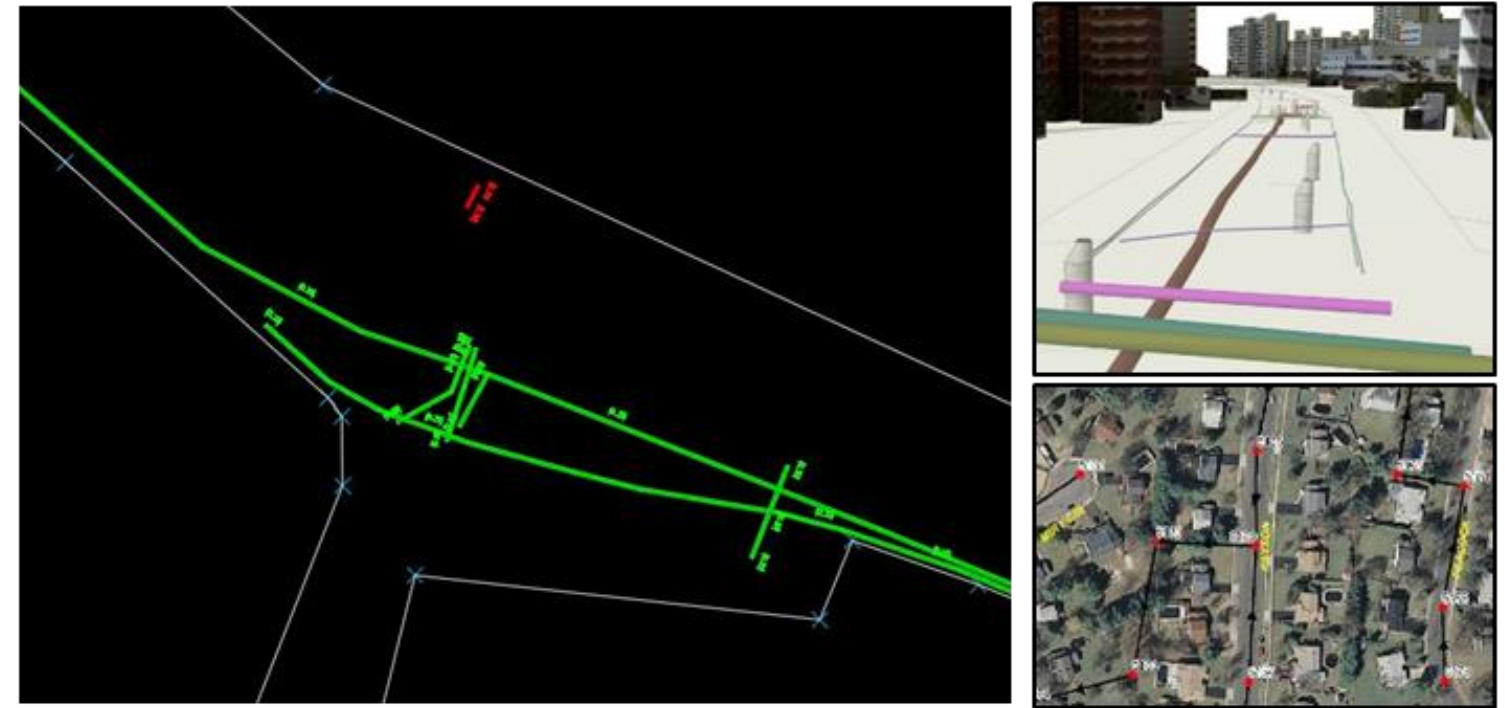
1. Data Acquisition (jobsite)



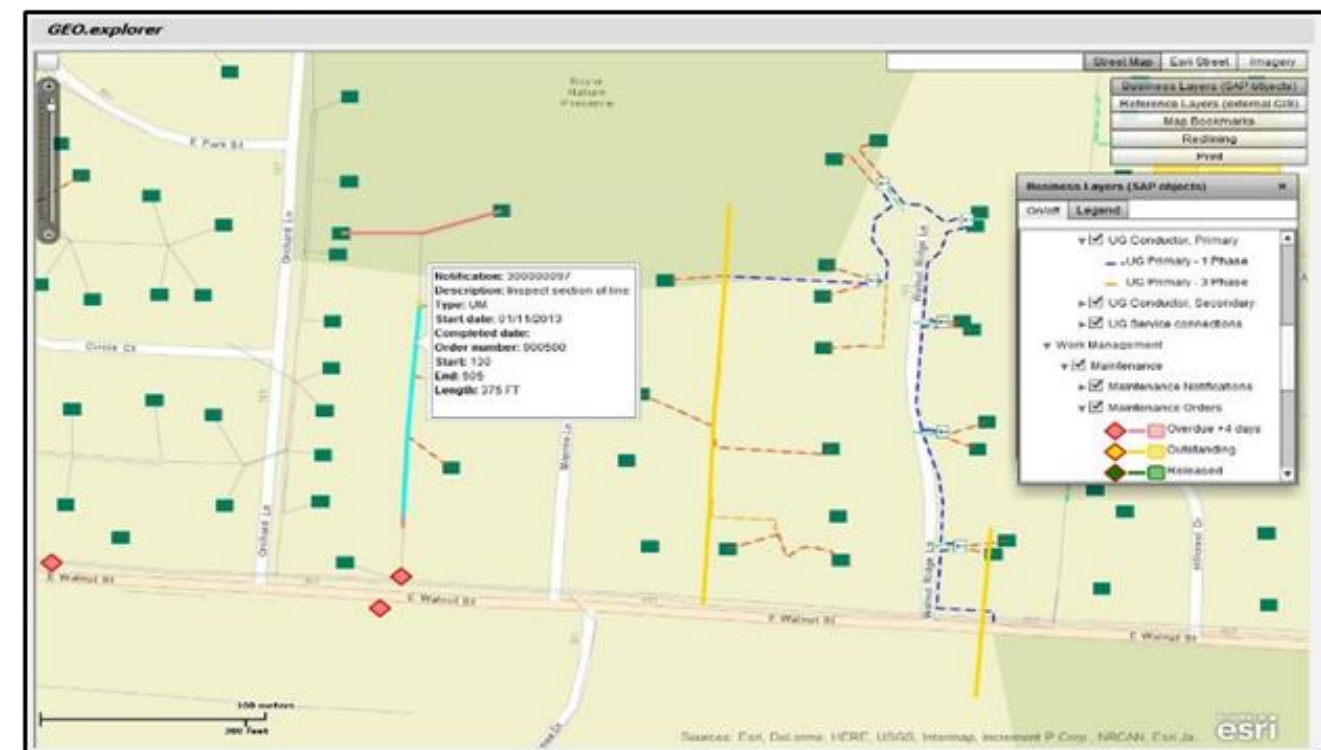
2. Data processing (TESMEC office)



3. 3D view of the utility network in AutoCad

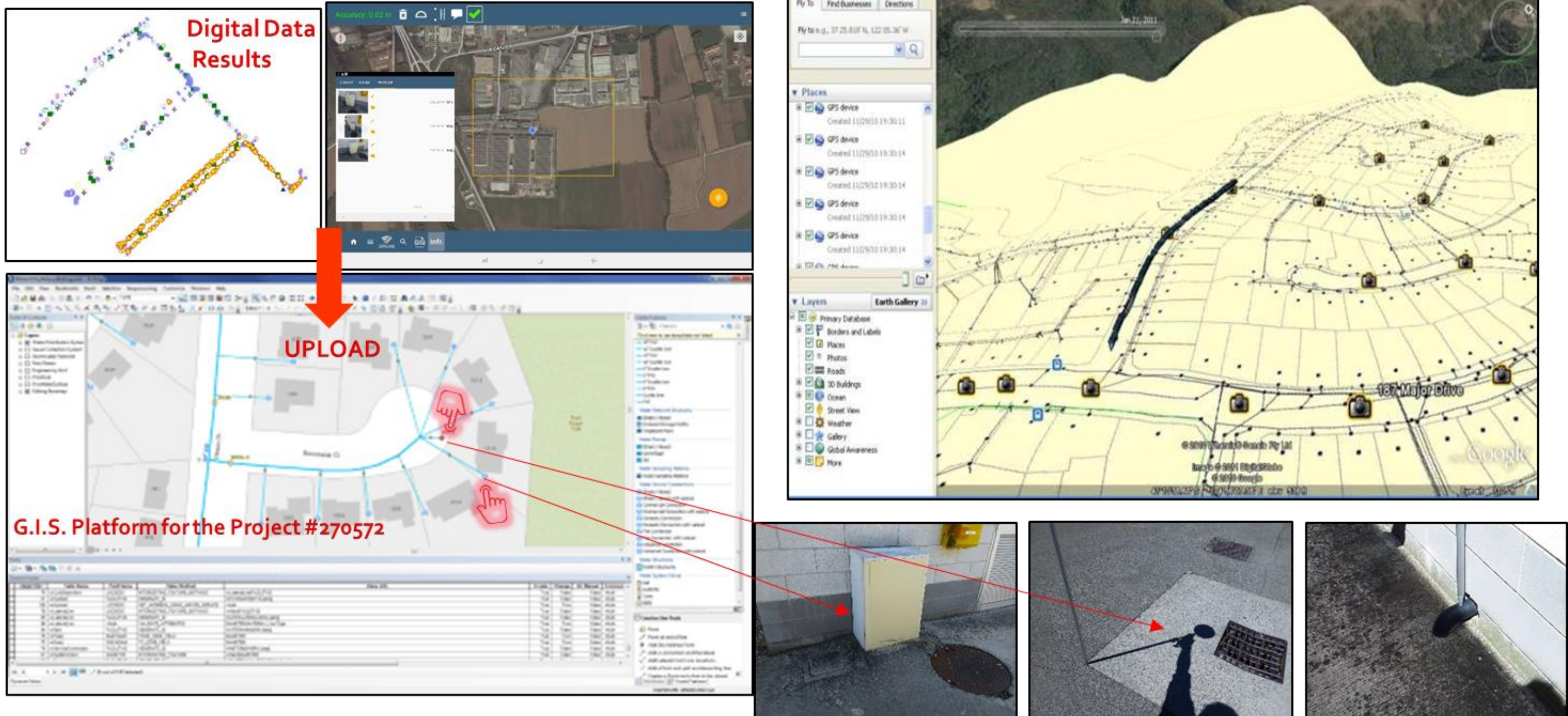


4. Integration of the utility network results in existing GIS environment



FINAL UPDATE

2. G.I.S. and Kml Layers Update



The final results of the survey and post processing activities is a G.I.S. available on-line and interactive, with editable features and position such as manholes, cabinets and water connections.