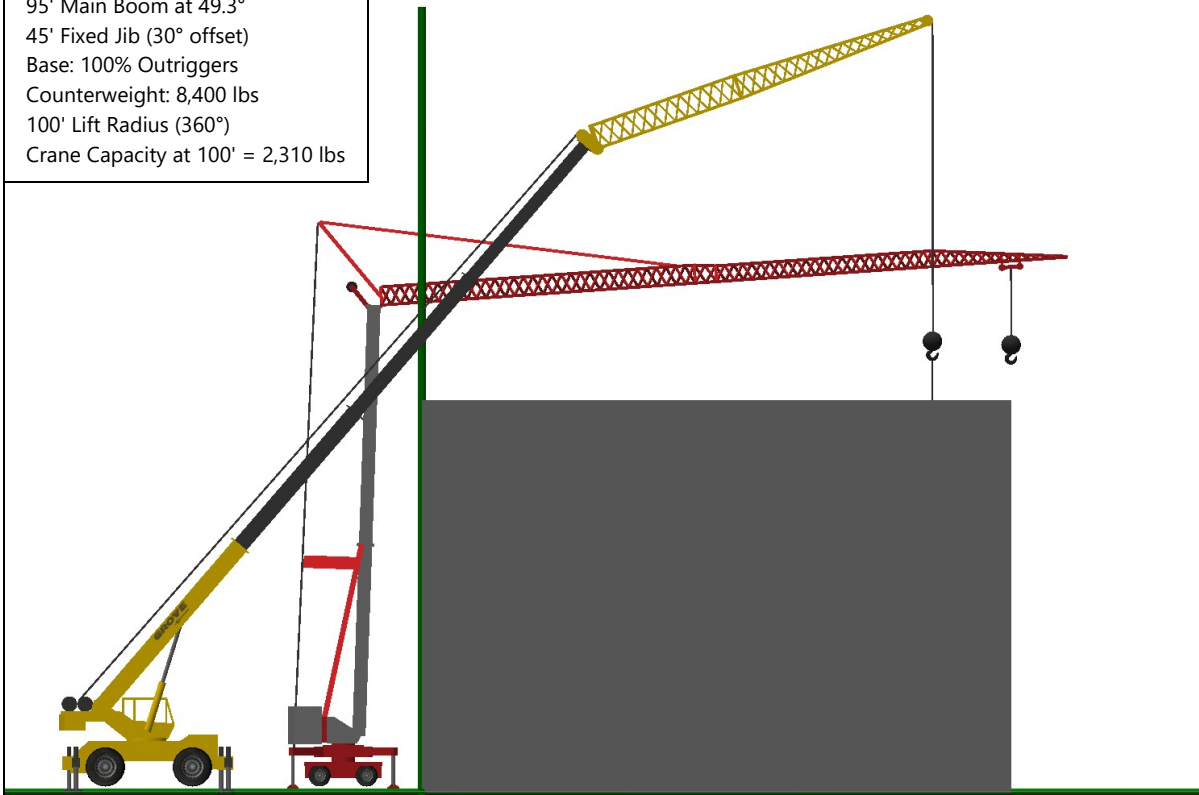


**Crane**

Potain Igo MA21  
55' Self Erecting Tower at 88°  
85.33' Jib, L24 (84° offset)  
Base: 100% Outriggers  
Counterweight: Full  
85' Lift Radius (360°)  
Crane Capacity at 85' = 1,543 lbs

**Crane**

Grove RT530E  
95' Main Boom at 49.3°  
45' Fixed Jib (30° offset)  
Base: 100% Outriggers  
Counterweight: 8,400 lbs  
100' Lift Radius (360°)  
Crane Capacity at 100' = 2,310 lbs



**Not issued for construction. For pre-planning only.**

Grid: 10' x 10'

Title	Potain IGO MA21 vs RT530E
Project	Low Rise Building
Customer	Forteza Equipo LLC Customers
Description	
Drawn By	Forteza Equipo LLC
	5/7/2017

