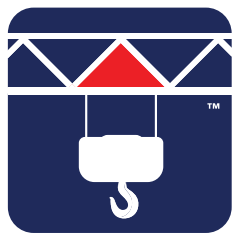
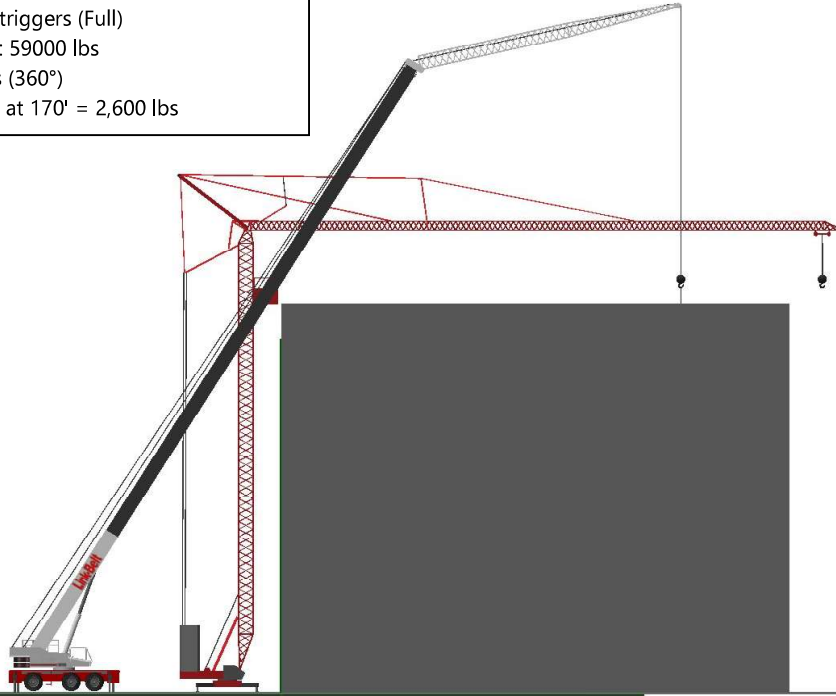


Crane

Potain Igo T130
124' Self Erecting Tower at 90°
164' Jib, Full Jib with 2 part Trolley (90° offset)
Base: 100% Outriggers
Counterweight: Full
164' Lift Radius (360°)
Crane Capacity at 164' = 3,086 lbs

Crane

Link-Belt RTC-80150 Series II
195.26' Main Boom (Mode EM1) at 57.8°
73' Offset Fly (45° offset)
Base: 100% Outriggers (Full)
Counterweight: 59000 lbs
170' Lift Radius (360°)
Crane Capacity at 170' = 2,600 lbs



FORTEZA
CRANE RENTAL LLC

Not issued for construction. For pre-planning only.

Grid: 10' x 10'

Title	Potain IGO T130 vs LB RTC80150 II
Project	Mid Rise Building
Customer	Forteza Crane Rental LLC Customers
Description	
Drawn By	Forteza Crane Rental LLC
	5/7/2017