

## Oroville Lineman Housing

3240 Foothill Blvd., Oroville, CA 95966

Call/Text: Shanelle Almeida (209) 648-2460

[OrovilleLinemanHousing@gmail.com](mailto:OrovilleLinemanHousing@gmail.com)

Complaints:

[www.OrovilleLinemanHousing.com](http://www.OrovilleLinemanHousing.com)

Compliments:

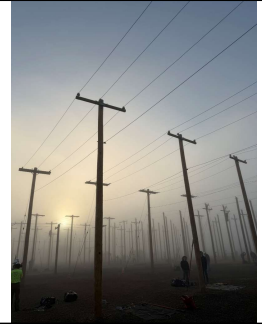
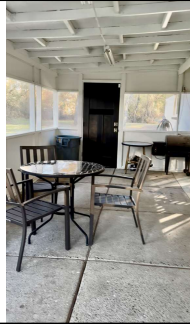
Located just **6.7 miles from Northwest Lineman College**, our **gated** property on nearly 3 acres now offers a dedicated **RV spot for lineman students**

- \*RV Spot Only:** Secure, gated parking for your RV or trailer
- \*Full Hook-Ups:** Rent includes **water, power, septic, and internet**- all utilities covered
- \*Shared Amenities:** Access to **covered patio, BBQ, and on-site laundry room**
- \*Safe and Convenient:** Fully gated property with plenty of space and quiet surroundings
- \*Rent:** \$850 - \$950 per month (depending on RV size)
- \*Move-In Costs:** A refundable security deposit is required



SCAN ME

Enjoy a secure, all-inclusive RV living environment with extra comforts-perfect for lineman students bringing their own RV



## JASPERSGOLD MANDARIN FARM

1478 Rabe Road, Oroville

Contact: Michelle Fragoso (209) 321-9421

Contact: Larry Fragoso (209) 814-0532

Complaints:

Email:

[fragoso.michelle@yahoo.com](mailto:fragoso.michelle@yahoo.com)

Compliments:

## 6 Full Hook Up RV Sites Available

Rent: \$750 per month

3 miles away from NLC campus/Minutes from the Gun Range

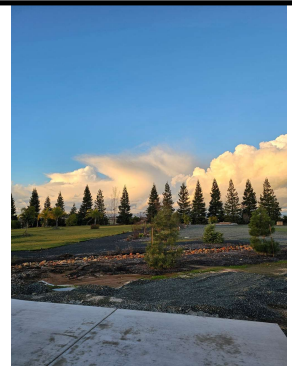
Public Bathrooms/Laundry Room

Quiet Country Setting

Ample space/Gravel

Sewer/Water

30 AMPS



	<b>Table Mountain Line Camp / Jed Haury</b> <b>14 Blossom Hill Rd Oroville CA 95965</b>	
	<b>530-990-0350</b>	<a href="mailto:tablemntlinecamp@gmail.com">tablemntlinecamp@gmail.com</a>
Complaints:	Distance to NLC campus 5 miles/ 10 minutes	Complaints:
30'-50' Travel Trailer/RV space with full hookups, peaceful setting with beautiful Table Mountain views, frequent deer sightings, and easy access to both school and town.		
<b>Amenities:</b> <div> <div>           -Full utility hookups (water, septic, 30-amp power)            -Utilities Included (Garbage, Septic, Electric, &amp; Water)            -Wi-Fi included            -On-site laundry facilities         </div> <div>           -BBQ and picnic table provided            -Great views of nature and wildlife (wandering deer)         </div> </div> <div> <div>-2 miles / 5 minutes from downtown restaurants and nightlife</div> <div>- 5.5 miles / 13 minutes to Table Mountain hiking trails</div> </div>		
<b>Pricing:</b> \$725/month - Trailers under 30' (\$2,900/term) \$825/month - Trailers 30'-50' (\$3,300/term) Deposit: \$200		
Additional occupants: +\$200/month per person to cover utility costs		
