



Oxford
Reading
Tree

Submarine Adventure



Roderick Hunt
Alex Brychta

What's this story about?

Wilf is given a toy submarine for his birthday. The key takes the children to Professor Tangle, the owner of a yellow submarine. The Professor mistakes the children for his new submarine crew.

Talk together

Read the title on the cover and look at the picture. Ask, "What do you think the story is about?" Talk about creatures you might see in the sea.

Read the story

W = Word recognition **G** = Language comprehension

- W** Page 2, show how to read 'submarine' in syllables (sub-ma-rine).
- W** Praise children for using letter sounds to work out new words.
- W** Page 4, ask, "Can you find two words in 'headlights'?"
- W** Page 8, show how to read 'professor' in three syllables (pro-fess-or).
- G** Page 12, ask, "Why didn't the Professor understand what they were telling him?"
- G** Page 30, ask, "Do you think the children were frightened when the rocks started to fall?" "What usually happens when there is danger in magic adventures?"



Wilf and Wilma had come to play at Biff and Chip's house. It was Wilf's birthday.

"Happy birthday, Wilf," said Biff and Chip.
They gave him a big card.



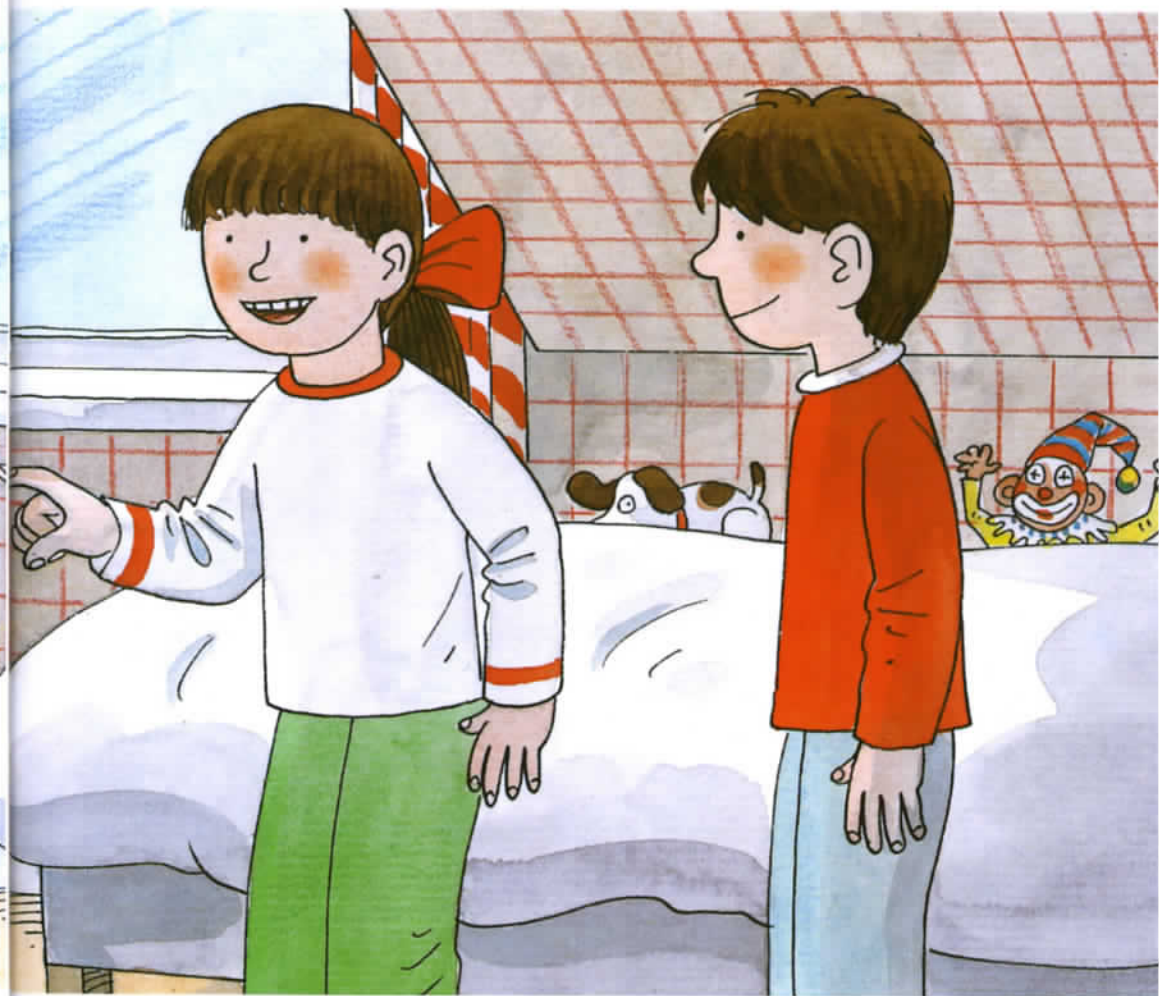
Wilf had a large box.

“This is my birthday present,” he said.

Everyone looked inside the box.

“What is it?” asked Chip.

“It looks like a submarine,” said Biff.



“It’s a kind of submarine,” said Wilf.
“It explores the sea bed.”

“That’s right,” said Wilma. “It goes to
the bottom of the sea.”

“What a brilliant present!” said Biff.



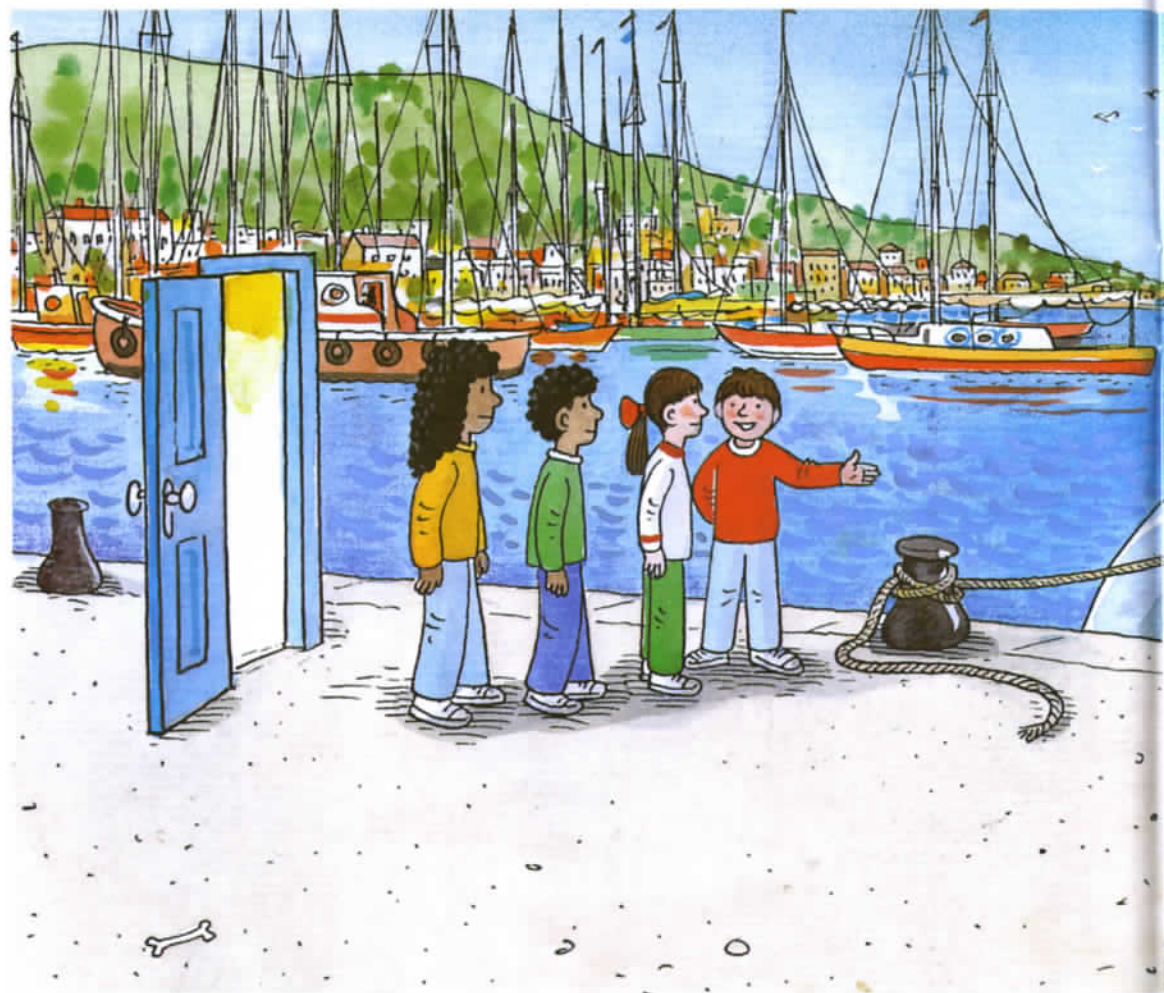
The submarine looked like a car. It had big windows and it had headlights. Wilf put the headlights on.

“It’s brilliant,” said Chip.



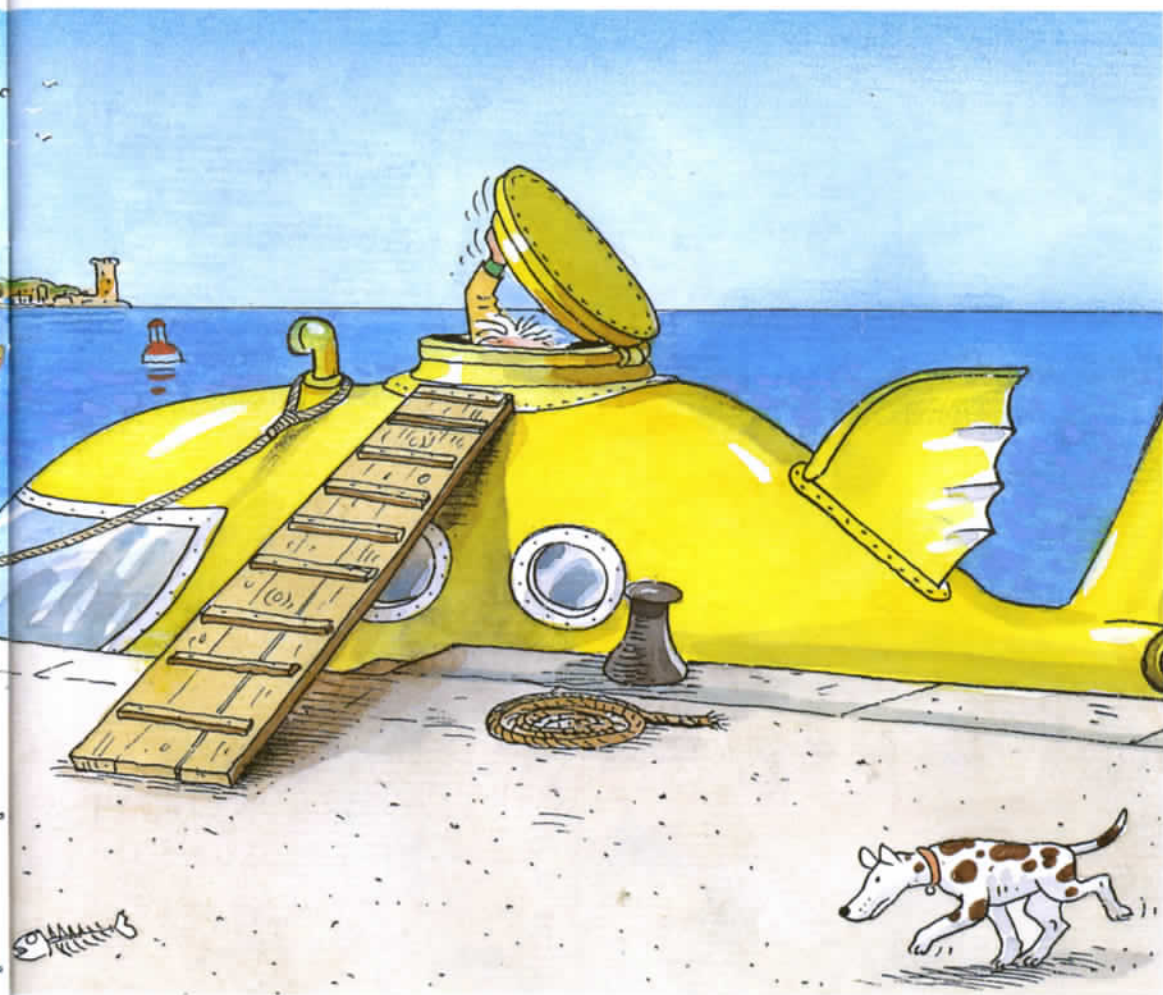
Biff looked at the magic key. Suddenly it began to glow. It was time for a new adventure.

“I wonder where the key will take us,” said Wilf.



The magic took the children to the sea, where there were lots of boats. Chip pointed to a yellow submarine.

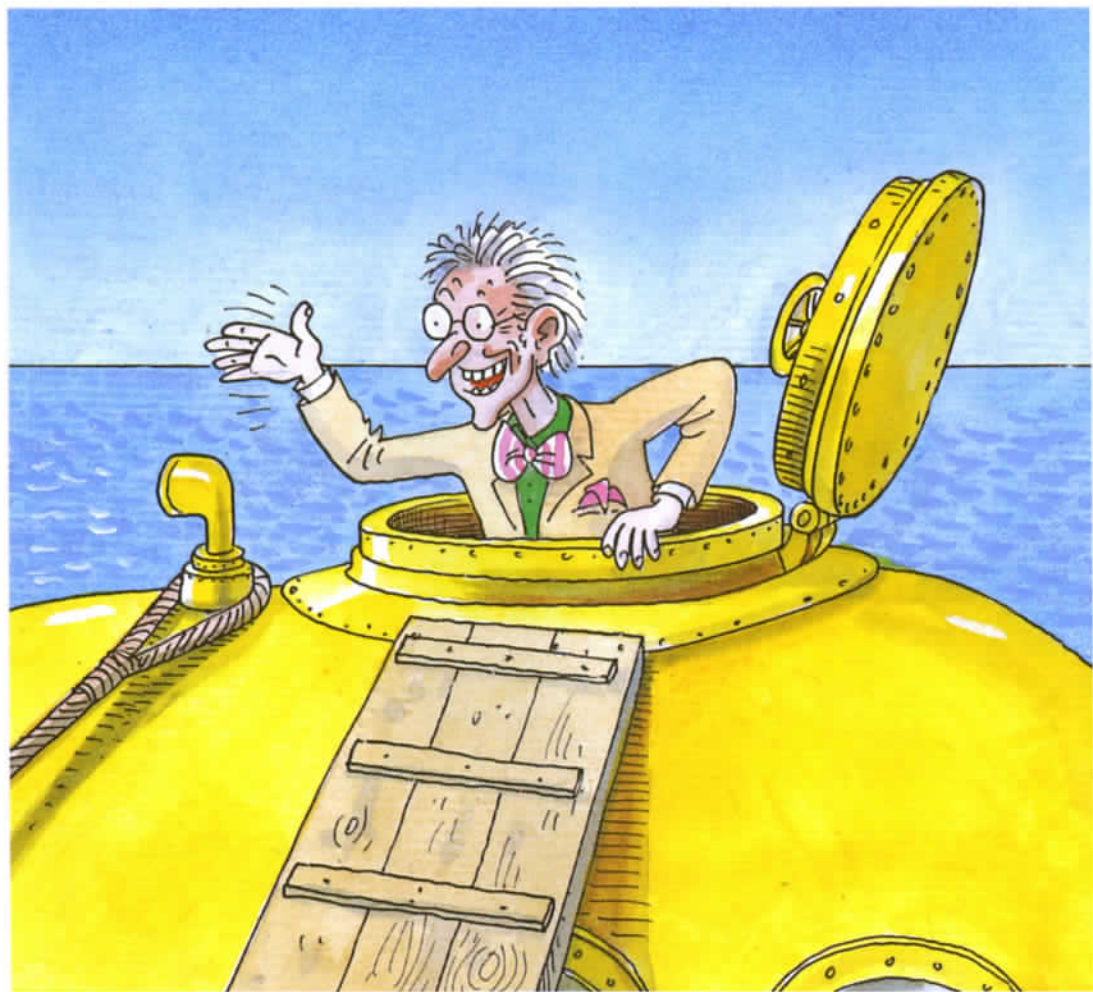
“Look at that one,” he said. “It looks just like Wilf’s submarine!”



The children went to look at the submarine.

“I wish we could look inside,” said Chip.

Just then a hatch began to open and a man looked out.



The man peered at them.

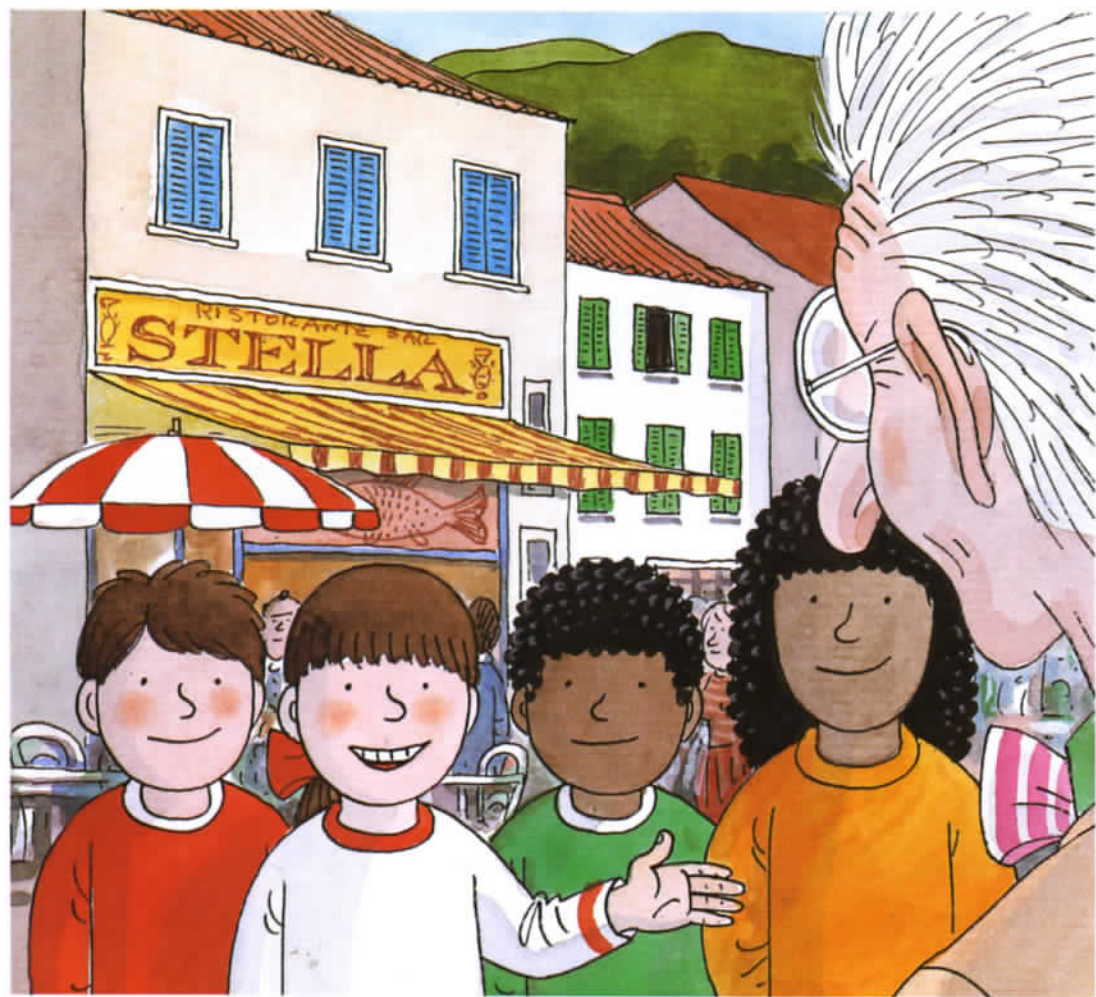
“Hello!” he said. “I’m Professor Tangle.”

“How do you do,” said Wilf.

“My new crew?” said Professor Tangle. “You look a bit young.”



“We’re not your new crew,” shouted Wilf. “How do you do!” Professor Tangle didn’t hear properly. He got things muddled up. “You know what to do?” he said.



“That’s good! Get on board,” went on the Professor. “And tell me your names.”

“I’m Biff,” said Biff, “and this is Wilma. This is Wilf, and this is Chip.”



“No, it’s not a ship,” said the Professor. “It’s a diving machine.”

“We know that,” said Wilf.

“We’ve never been in one,” said Wilma, “and we’re not your new crew!”



“You flew?” said Professor Tangle. “I didn’t see an aeroplane. Now shall we go?”

Everyone smiled, and they all climbed into the submarine.

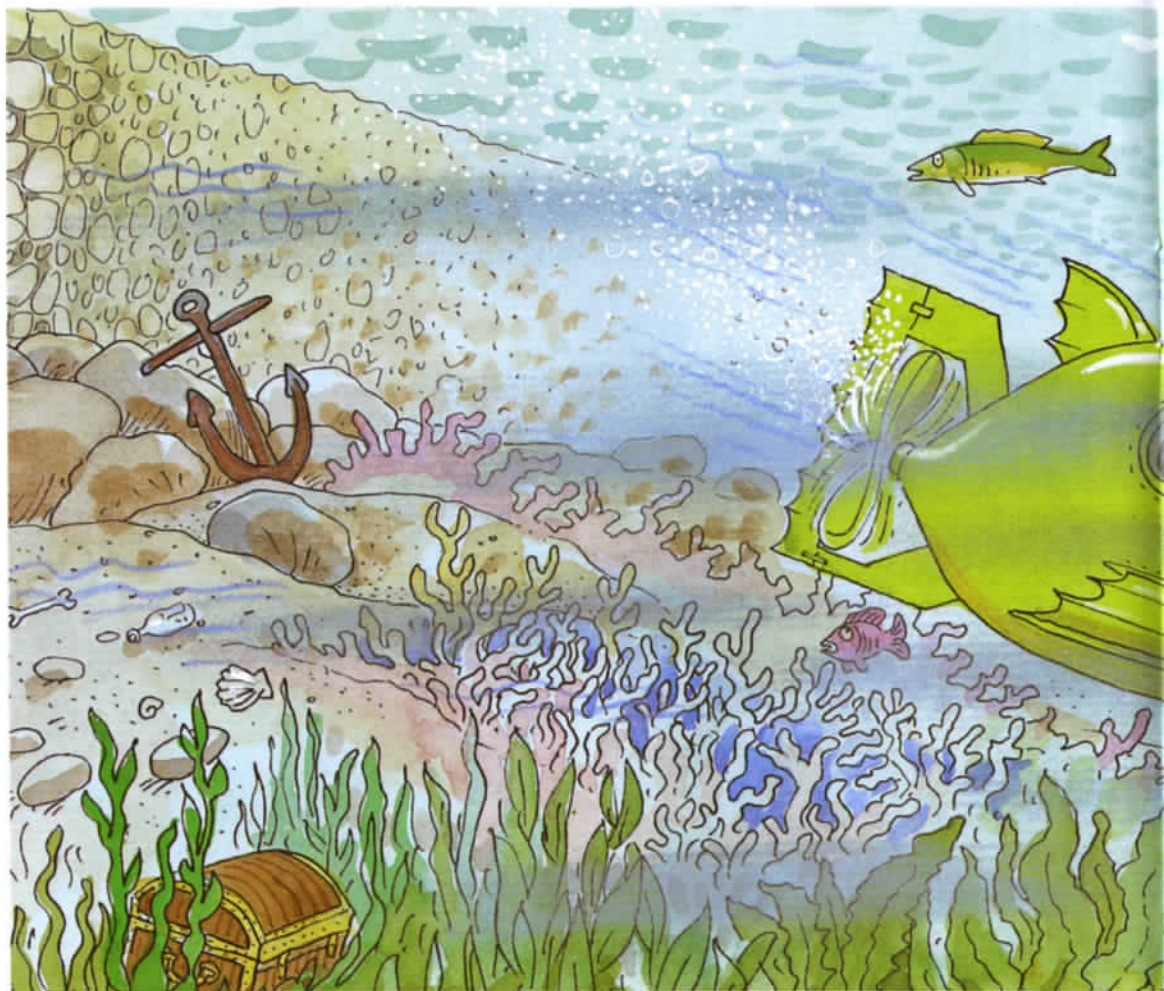


Professor Tangle shut the hatch.

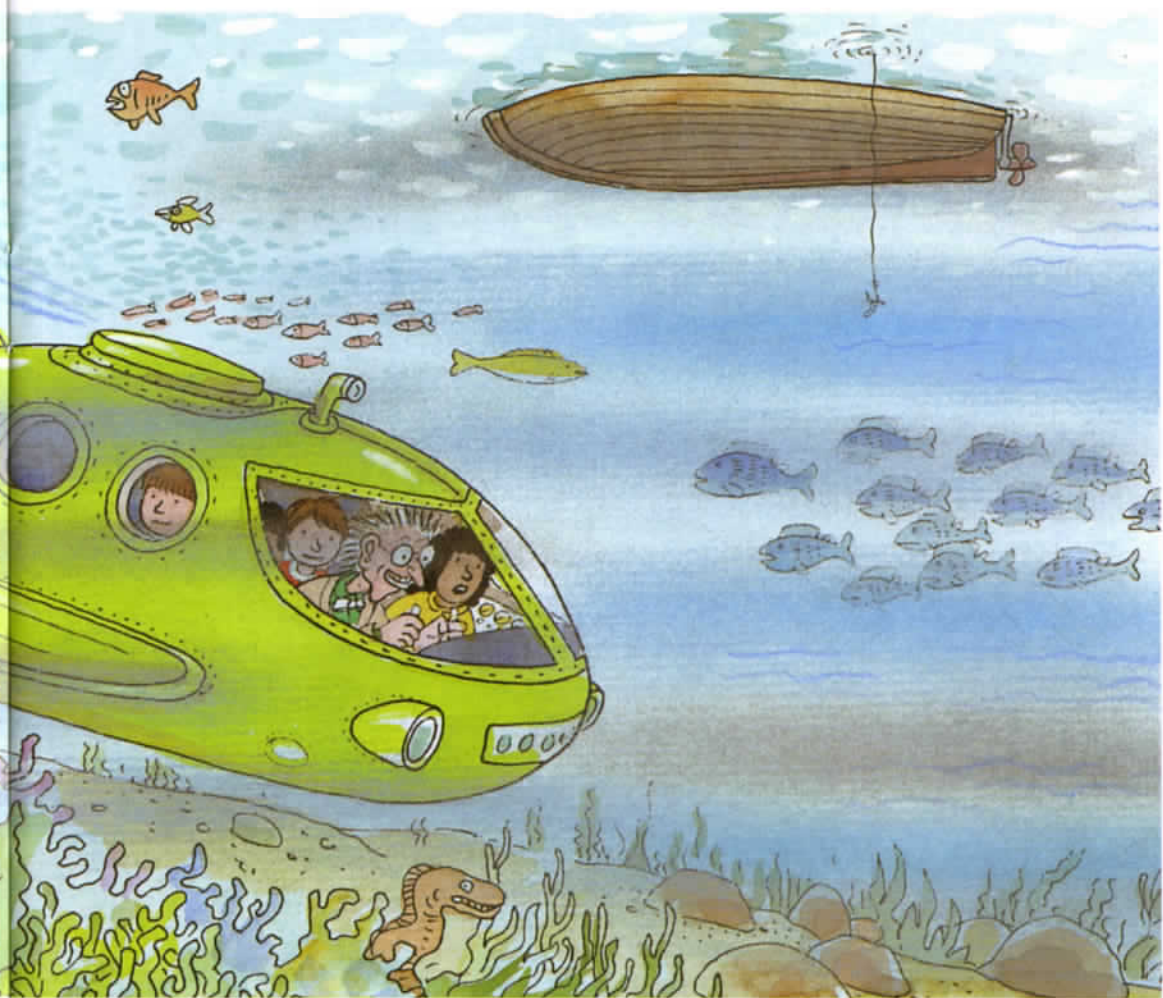
"There's not much room," said Wilma.

"No," said Biff. "I hope it doesn't leak."

"Of course you can speak," said the Professor.



Professor Tangle started the engines.
“It’s time to dive,” he said.
The submarine went under the water.
“Glub! Glub! Glub!” it went.
Everyone looked out of the window.



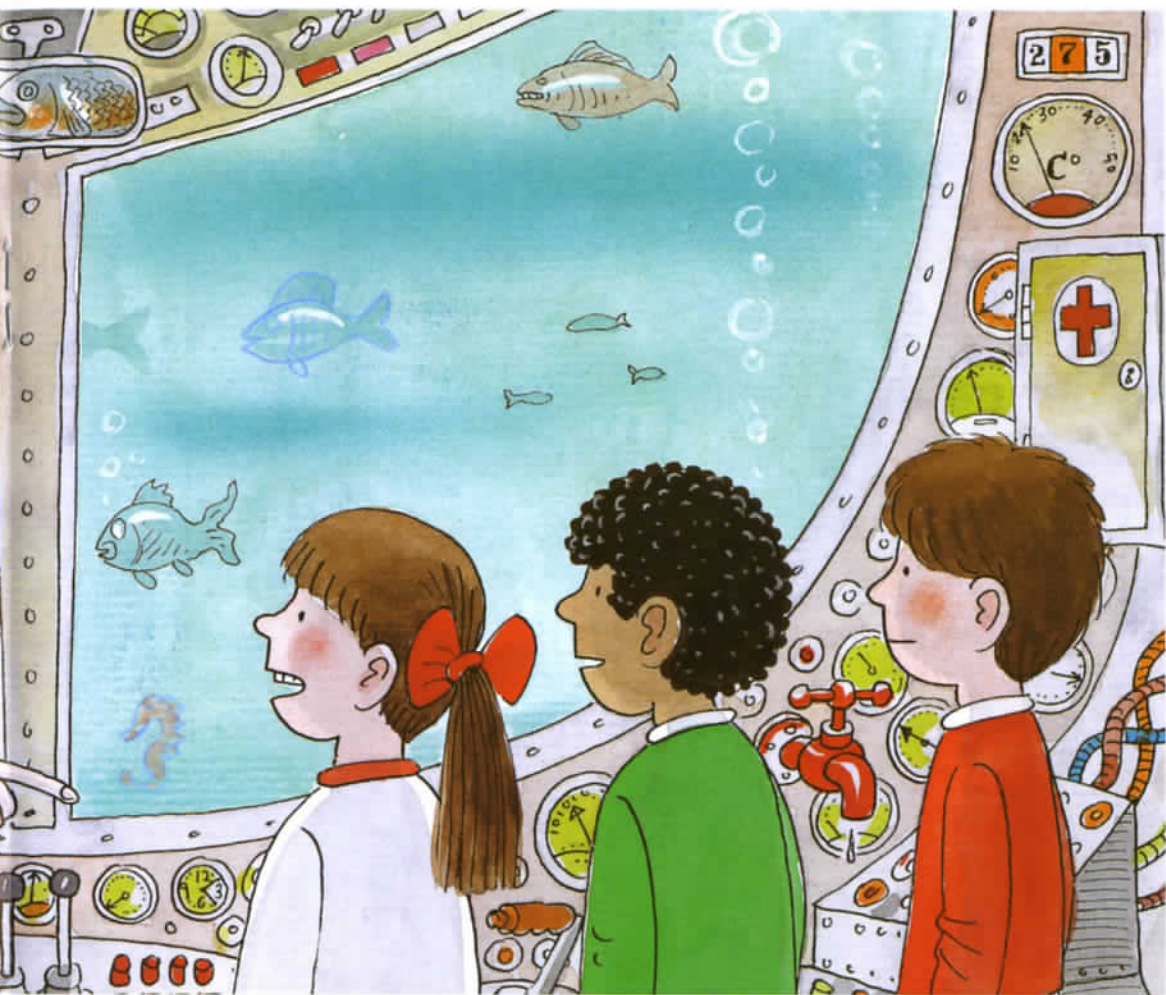
They could see fish everywhere.

“It’s wonderful,” said Chip. “It’s amazing to be under the sea.”

“You can’t see?” said Professor Tangle.
“Look out of the window, then.”



“Come on, crew!” said Professor Tangle. “Time to do some work. Push that button, Biff. Press that handle, Wilf. Pull that lever, Chip.”



“We’re not the crew!” yelled Biff.
“Things might go wrong.”

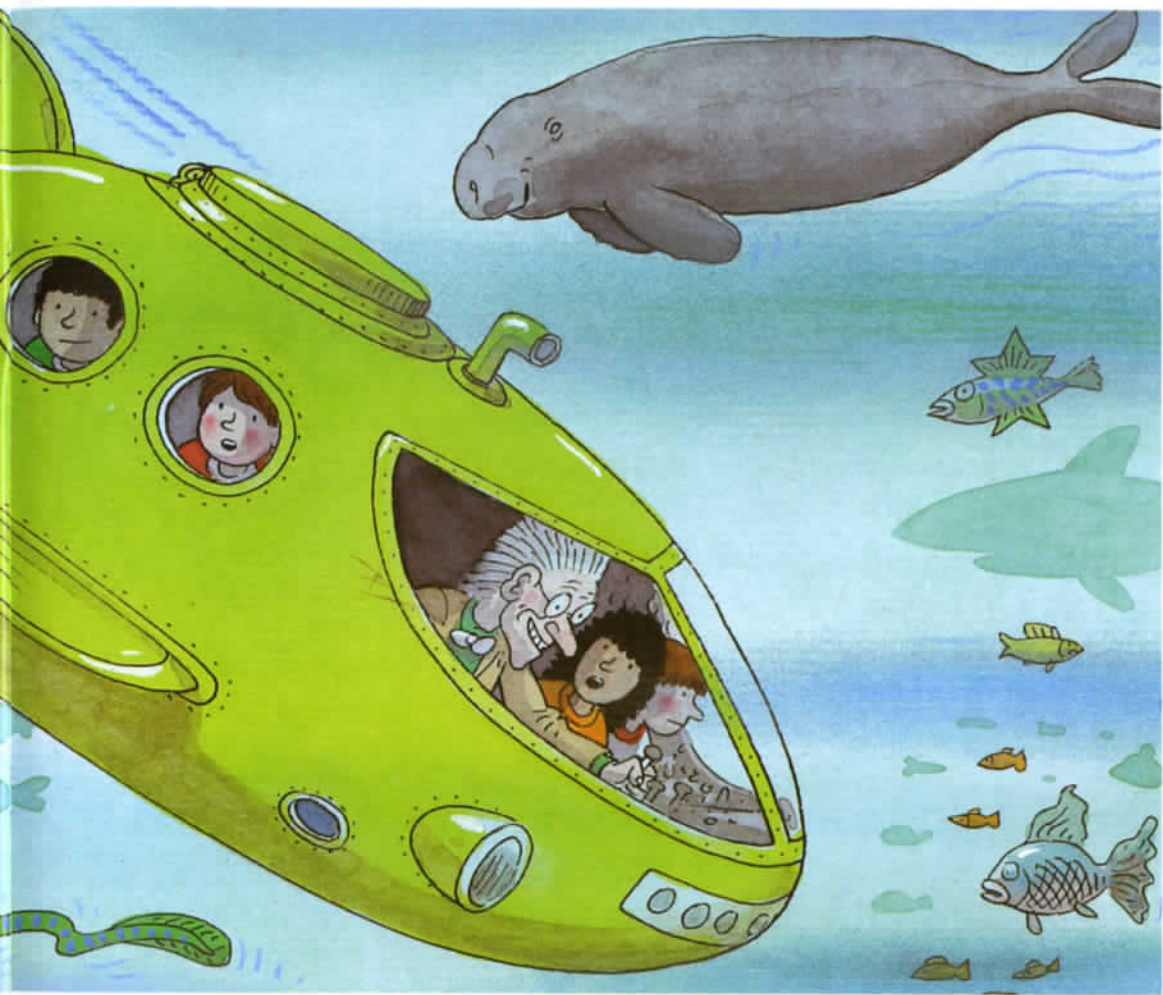
“Sing a song?” said Professor Tangle.
“There’s no time for that. There’s far too much to do.”



The submarine began to dive. It went deeper and deeper.

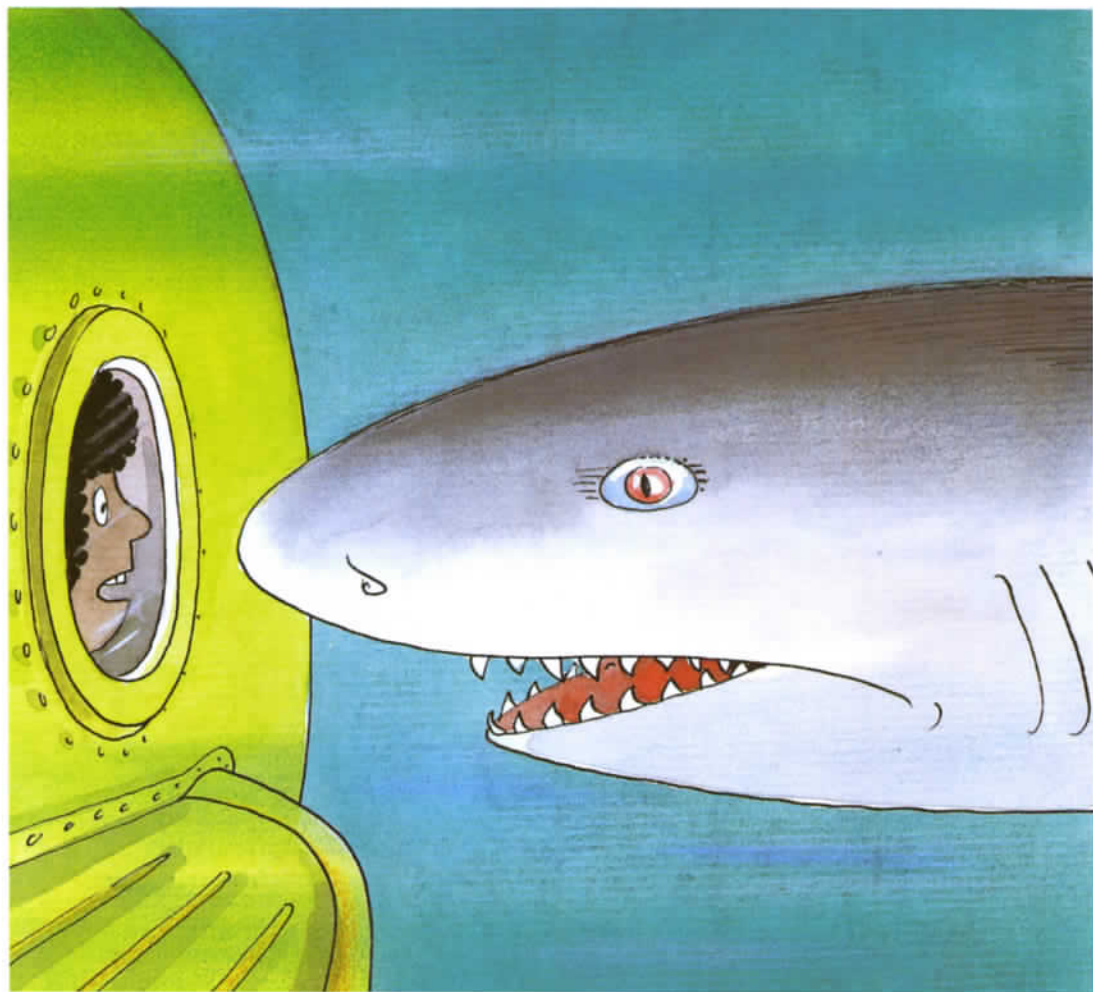
“Glub! Glub! Glub!” it went.

“Where are we heading?” shouted Chip. “Will we dive deep?”



“No, you can’t go to sleep,” said Professor Tangle. “You’re the crew! You have to stay awake! We are going to dive deep.”

“This thing scares me,” said Wilma.

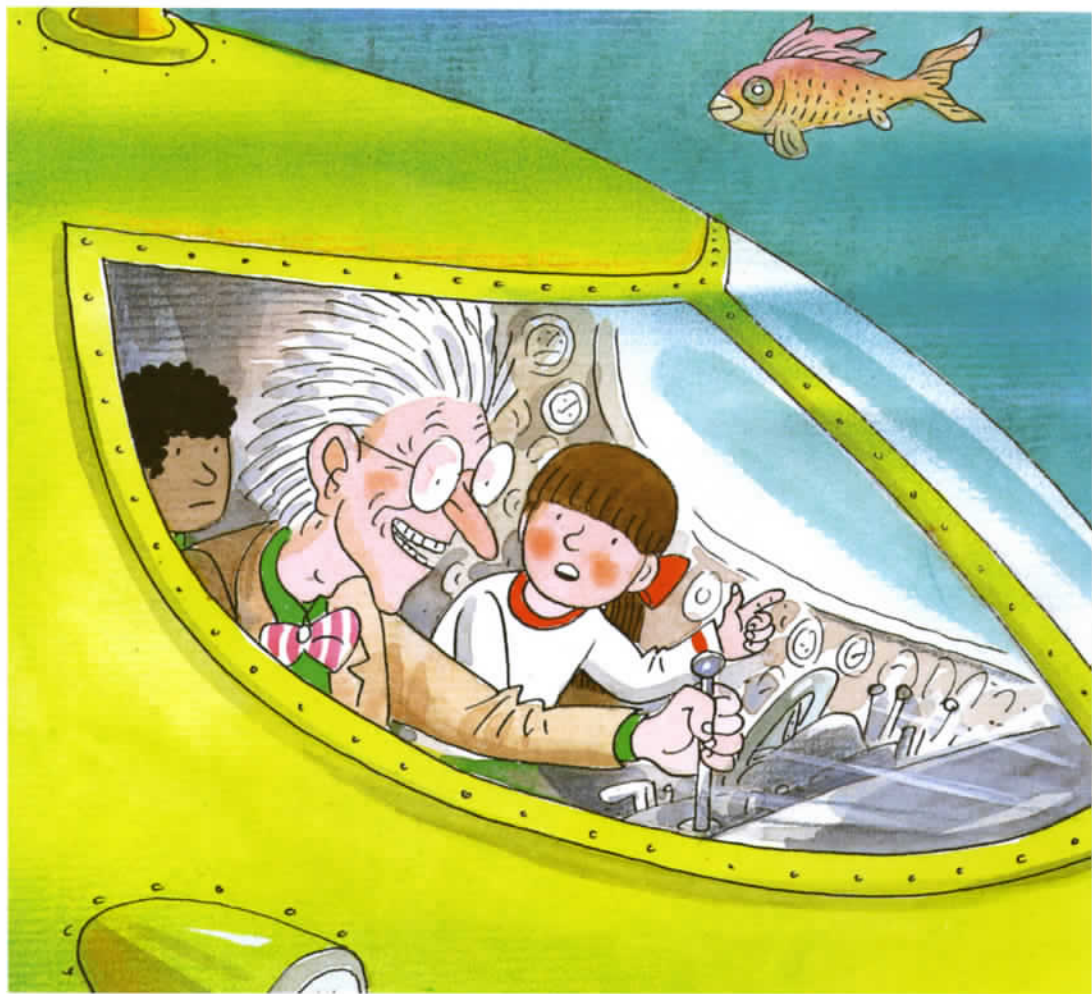


The submarine went deeper and deeper.

“Glub! Glub! Glub!” it went.
Everyone looked out of the window.

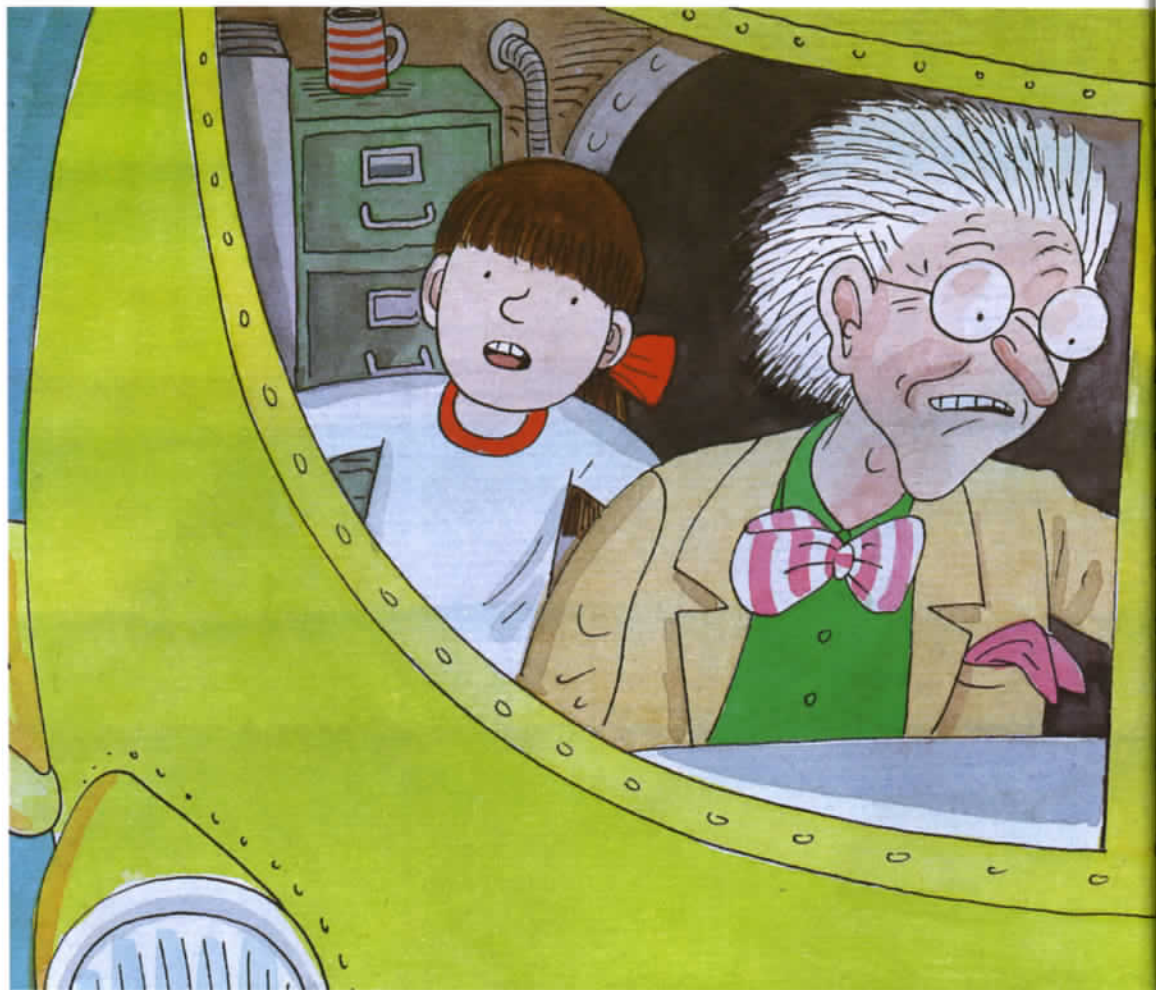
“I can see a shark!” said Wilma.

“It is getting dark,” said the Professor.



The submarine went even deeper. Professor Tangle was excited. It began to get dark.

“It’s getting very dark,” said Biff.
“Put the lights on, Professor.”



The Professor pushed the light switch.
“Bother! The lights don’t work,” he
said.

Biff looked out of the window.

“Oh no! Help! Professor Tangle! I can
see huge rocks,” she called.



“No, I don’t need clean socks,” said the Professor. “Now, where’s that fuse?” He began to look for his tool box.

“Look out!” yelled Chip. “We’re going to crash!”



Professor Tangle pushed a button and he pulled a lever. The submarine didn't crash. It just missed the rocks.

"Phew! That was close," said Wilma.



There was a cave ahead of them. The submarine was heading for it.

“Slow down, Professor,” called Wilf.
“We are heading for a cave in the rocks.”



“Yes, it was in the box,” said the Professor.

He held up the fuse.

“Professor, slow down!” yelled Wilf.
“We’re going into a cave.”



“Well, why didn’t you say so?” asked Professor Tangle. “We’d better slow down.”

He pulled a lever and the submarine slowed down just in time.



Rocks and stones fell all around them.
“We must get out,” said the Professor.
“Full speed ahead.”
“Oh no! We aren’t going to make it,”
said Wilma.



The submarine got out just in time.

“Phew! That was close!” said Biff.

“We’re sorry you couldn’t get the diamonds, Professor,” said Chip.
Just then the key began to glow.



The magic took them back to Biff's room.

"That was a good adventure," said Chip.

"We must go home for tea," said Wilma.

"What's that?" joked Wilf. "You want to go back to sea?"

Play a game

Rhyming words

To help spell words with the same spelling patterns.

- Choose a page where the Professor mishears, e.g. pages 11–12, crew/flew. Ask children to find a word that rhymes with 'crew'. Close the book and ask them to spell 'flew' and 'crew'.
- Swap roles.
- Point out how some of the rhyming words have a different spelling pattern, e.g. do/crew, rocks/box.

Other ideas

You can use these ideas straight away, or on another day.

- Think of more words that rhyme with words found in the story.
- Name the sea creatures in the illustrations.

Submarine Adventure

Wilf's birthday present is the beginning of an exciting undersea adventure.



Stage 6 More Stories B

Dad's Grand Plan
Mirror Island
Don't Be Silly

Stage 7 More Stories B

The Willow Pattern Plot
The Joke Machine
Submarine Adventure

Available in packs

Stages 6 and 7 More Stories Pack B (one of each title) ISBN 978-0-19-846577-5

Stages 6 and 7 More Stories Class Pack B (six of each title) ISBN 978-0-19-846578-2

OXFORD
UNIVERSITY PRESS

www.OxfordPrimary.co.uk

Orders and enquiries to Customer Services:
tel. 01536 741171

For further information, phone the
Oxford Primary Care-line: tel. 01865 353881

text © Roderick Hunt 2002
illustrations © Alex Brychta 2002

First published 2002
This edition published 2008
10 9 8 7 6 5 4 3

ISBN 978-0-19-846584-3



9 780198 465843

Printed in China by Imago