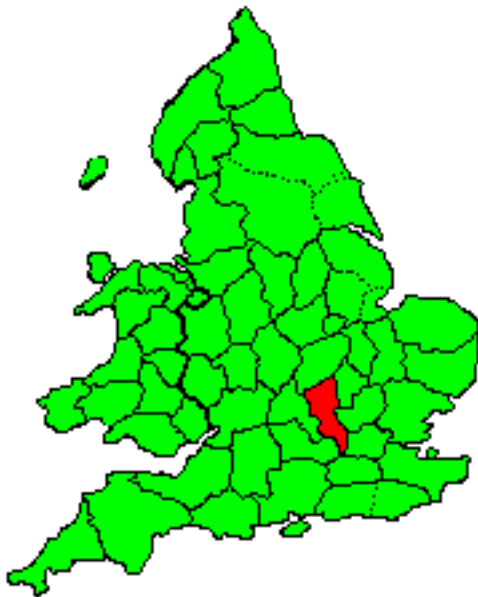


# BUCKINGHAMSHIRE




Buckinghamshire lies to the north-west of London, and contains most of the scenic area known as the Chiltern Hills. At its southern tip it is bordered by the counties of Middlesex, Surrey and Berkshire, to the west by Oxfordshire, to the north by Northamptonshire, and to the east by Bedfordshire and Hertfordshire.

The ancient boroughs of Buckingham and High Wycombe (also known as Chepping Wycombe) became municipal boroughs in 1835. Shortly afterwards borough police forces were established, and they were responsible for the inspection of weights and measures. The Manor of Winslow also asserted jurisdiction over weights and measures for a while. In the county the arrangements were altered frequently until the county police force was established in 1857.

There is little evidence of the trade in scales and weights for much of the nineteenth century. The earliest recorded specialist scale makers in the county were Thomas Gale, probably part of the family of that name who worked in Oxford, and Thomas Lunnon, who had been trained across the border in Uxbridge, Middlesex. Both worked in rural locations near Marlow, and it is possible that they travelled around the area adjusting and servicing weights and scales. In the rest of the county tradesmen probably looked to Oxford or Windsor for their needs. In the twentieth century Avery's moved in to Wycombe and Slough, and in the 1920s and 1930s small firms appeared (and disappeared) from time to time.

In the second half of the twentieth century several new firms were established. They tended to move away from the 'high street' to industrial estates. Among them were E.H. Oakley (established 1950) and Reverifications Ltd (established 1962), both of which were based on the outskirts of Aylesbury at the turn of the century.

### A: Inspection by the County of Buckinghamshire

Dates	Events	Marks	Comments
1826	One set of standards [353] verified.		The mark is a swan, with a coronet around its neck, and a ball and chain attached. The Aylesbury Museum has a punch for this mark.
1834/5	A second set of standards [599] verified. There were two divisions, each comprising several of the 8 hundreds, with an inspector for each division.		<b><i>Inspectors 1834-41:</i></b> <i>Northern division (hundreds of Aylesbury, Ashenden, Buckingham, Cottesloe, Newport):</i> William Gleadah (Aylesbury) <i>Southern division (Burnham, Desborough, Stoke):</i> Joshua Rolls (Marlow).
1841	Eight high constables to be inspectors. Six short sets of standards [879-884] verified.		<b><i>Inspectors 1841-43:</i></b> <i>1 Buckingham:</i> John Walker <i>1A Ashenden:</i> Charles King 879 <i>1B Cottesloe:</i> John Bull 880 <i>1C Newport:</i> James Attkins 881 <i>2 Aylesbury:</i> William Cross <i>2A Burnham:</i> John Hearne 882 <i>2B Desborough:</i> Joshua Phillips 883 <i>2C Stoke:</i> James Needham 884
1842	Another set [901] verified for the Hundred of Cottesloe.		<b><i>Inspector 1843-52:</i></b> Joshua Phillips [1847 K]
1843	One inspector appointed for the whole county.		<b><i>Inspectors 1852-53:</i></b> <i>Aylesbury:</i> William Hamilton <i>Ashenden:</i> William Thomas <i>Buckingham:</i> Philip Sargeant <i>Burnham (1):</i> Charles Wootten <i>Burnham (2):</i> John Symington <i>Cottesloe:</i> Job Denson <i>Desborough:</i> George Evans <i>Newport:</i> William Driscoll <i>Stoke:</i> William Thomas
1851	A new constabulary organisation set up. The high constables were replaced by 9 superintending constables, who acted as inspectors. The old inspector continued until 1852.		

## BUCKS.

### WEIGHTS AND MEASURES.

*To all persons making, selling, or exposing for sale, or using weights and measures, in their respective trades or callings,*

**I DO HEREBY GIVE NOTICE,** that under and by virtue of an Act of the 4th and 5th W. IV., cap. 49, I have been appointed Inspector of Weights and Measures, for the northern division of the county of Bucks, comprising the hundreds of Aylesbury, Ashendon, Buckingham, Cottesloe, and Newport; and for the purpose of carrying the duties of my office into effect, I shall attend on the days and at the places under-mentioned, with authenticated copies of the Imperial standard weights and measures, when and where all persons concerned, residing in the several villages and places near to the said towns, are requested to attend with their weights and measures, to have them examined, compared, and stamped, otherwise they will be subject to the penalties imposed by the said Act.

Appointments in December, 1834:

Monday, 8th, and Tuesday, 9th, at the Bull Inn, Olney.

Wednesday, 10th, and Thursday, 11th, at the Swan Inn, Newport Pagnell.

Friday, 12th, and Saturday, 13th, at the Bull Inn, Stony Stratford.

Monday, 15th, and Tuesday, 16th, at the White Hart Inn, Buckingham.

Wednesday, 17th, at the Bell Inn, Winslow.

Thursday, 18th, at the Cock Inn, Wing.

Friday, 19th, at the King's Head Inn, Ivinghoe.

Monday, 22d, at the Buckingham Arms Inn, Great Missenden.

Tuesday, 23d, at the Cross Keys Inn, Princes Risborough.

Wednesday, 24th, at the Marlboro' Arms Inn, Waddendon.

Friday, 26th, at the Sun Inn, Brill.

Saturday, 27th, at the Inn, Loog Crendon.

Monday, 29th, Tuesday, 30th, and Wednesday, 31st, at the George Inn, Aylesbury.

Each day at eight o'clock in the morning.

W. GLEADAH,

Inspector of Weights and Measures, for the Northern Division of the County of Bucks.

## BUCKS.

### WEIGHTS AND MEASURES.

**TO** all Persons making, selling, or exposing for sale, or using Weights and Measures in their respective Trades or Callings.

*I do Herby give Notice,*

That under and by virtue of an Act of the 4th and 5th William 4th, cap. 49, I have been appointed Inspector of Weights and Measures for the Southern Division of the County of Bucks, comprising the Hundreds of Burnham, Deoborough, and Stoke; and that for the purpose of carrying the Duties of my Office into effect, I shall attend on the Days and Times, and at the Places undermentioned, with authenticated copies of the Imperial Standard Weights and Measures, when and where all Persons concerned, residing in the several Villages and Hamlets near the said Towns, are requested to attend and have their Weights and Measures examined, compared, and stamped; otherwise they will be subject to the Penalties imposed by the said Act.

Monday, 26th January, 1835, at the George Inn, Wyrandisbury.

Tuesday 27th, and Wednesday 29th, at the George, Colbrook.

Thursday 30th, and Friday 30th, at the George, Eton.

Saturday 31st, at the George, Burnham.

Monday, 2nd February, and Tuesday 3rd, at the Bull, Woburn Green.

Wednesday 4th, at the White Hart, Beaconsfield.

Thursday 5th, at the Pack Horse, Gerrard's Green.

Friday 6th, and Saturday 7th, at the Crown, Amersham.

Wednesday 11th, Thursday 12th, and Friday 13th, at the Golden Ball, Chesham.

Saturday 14th, and Monday 16th, at the Black Boy, West Wycombe.

Tuesday 17th, at the Stag and Huntsman, Hambleton.

Wednesday 18th, Thursday 19th, and Friday 20th, at the Inspector's Office, Chapel Street, Marlow.

*Each Day at Eight o'Clock in the Morning.*

JOSHUA ROLLS,

Inspector of Weights and Measures for the Southern Division of the County of Bucks.

¶ The Notices of Inspection of William Gleadah [BG 6/12/34] and Joshua Rolls [BH 24/01/35].

¶ Buckinghamshire standard measures. The five larger ones are from the set acquired in 1826, and were made by R.B.Bate of London. The four smaller ones are part of a 'short set' issued in 1841.






¶ A 4oz bronze weight verified in Buckinghamshire. In addition to the swan mark there is an earlier GR mark (used by the county examiners in the period 1795-1830) and a contemporary Essex county mark.

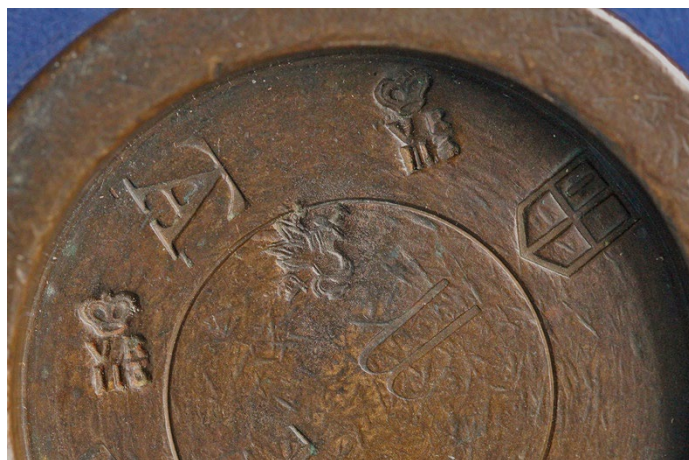
¶ An 8oz weight stamped in Bucks, probably in the period 1835-50. The weight was originally made and verified in the City of London and bears the Founders' marks prior to 1826. It also has a crude W mark, which probably indicates the jurisdiction of the Manor of Winslow (see below).





Dates	Events	Marks	Comments
1853	The number of superintending constables was increased from 9 to 15, all of whom were inspectors. Seven more short sets of standards [1088-93] issued.		<i>Additional inspectors 1853:</i> Aylesbury: Robert Hamilton Ashenden: Joseph Gregory Buckingham: Thomas High Cottesloe: Charles Hodgkinson Desborough: John Tutte and William Lennan Newport: Clark Chambers
1855	Another short set of standards [1162] issued.		1854 K], Rudland [BH 55] Evans had retired by 1853 and in 1853 Driscoll was replaced by William Whadcoat.
1857	County police force set up. There were five police districts, numbered as below. The inspectors were the police superintendents, all of whom had served previously as superintending constables.  The SW district was later split for WM purposes, and a police inspector assigned specifically for WM duties.		<i>Inspectors 1856:</i> Aylesbury: William Hamilton, Robert Hamilton Ashenden: Samuel Bragg, William Thomas Buckingham: Philip Sargeant, John Whadcoat Burnham: Charles Wootten, John Symington Cottesloe: Job Denson [1], Charles Hodgkinson Desborough: John Tutte, Richard Barber Newport: John Rudland, William Whadcoat Stoke: John Parker, Charles Adams.
1879	Numbers issued: 114 Central 115 Northern 116 N-West 117 S-West 118 S-East 119 Chesham	 	

Dates	Events	Marks	Comments
<b>Police Superintendents as Inspectors 1858-90</b>			
<i>1 (Central) Aylesbury</i> Job Denson (&1857-87) [1] Jabez Webb (1887-90)	<i>4 (South-West) High Wycombe</i> John Symington (&1857-59&) Charles Hodgkinson (&1859-64&) Thomas Clark (&1864) William Sargent (1865-90)	<i>(South-West) Chesham</i> Charles Adams (1858-60) James Carruthers (1860-64) Thomas Dunham (1864-66) John Moore (1866-79) John Hall (1880-81) Jabez Webb (1881-87) George Sutton (1887-1890)	
<i>2 (Northern) Fenny Stratford</i> Charles Hodgkinson (&1857-59&)] Samuel Bragg (&1859-61) Thomas Breary (1861-68) Allen Hedley (1868-80) John Hall (1881-90)	<i>5 (South-East) Slough</i> William Hamilton (&1857-61) Thomas Clark (1862-64&) Charles Hodgkinson (&1865-66) Thomas Dunham (1866-90) George Sutton (1890)		
<i>3 (North-West) Steeple Claydon</i> Samuel Bragg (&1857-59&) John Symington (&1859-65) Benjamin Shepherd (1865-90)			



¶ Detail from a 1 lb bronze weight. The weight was originally made and verified in the City of London, before moving to the Northern district B1 of Buckinghamshire, probably 1858-79. It later moved across the county boundary to Oxfordshire, acquiring the VR113 stamp.

¶ A 4oz brass weight verified in Buckinghamshire, district B2, probably 1858-79. It was later restamped with the uniform verification number 114 (1880-1901).





¶ Superintendent Job Denson, 1857. Inspector of Weights and Measures for the Central District, also Deputy Chief Constable for the county.

Dates	Events	Marks	Comments
1889	Buckinghamshire CC formed; one qualified inspector, using No.117; office in Aylesbury.	ER 115	<i>Qualified inspectors:</i> Thomas Kyle (1890-1928) [MR 32:58] J.J. Murphy (1908 -12) [MR 73:2] [No.116] J.G. Dodds (q1909 Bucks -13) [MR 43:3] [No.116] [Hbk] A. Ormerod (1913-19) H. Birchanall (1913-23) [MR 51:200] T.H. Jenks (q1908 in B'ham, moved to Bucks 1919, chief 1929-48) [MR 69:251] W.A. Davenport (q1924/6, Bucks 1935, chief 1948-60) [MR 35:227, 48:39, 60:204] G.L. Davis (q1931 in Bucks, chief 1961-74) [MR 74:218]
1935	Other numbers in the range 114-118 were re-introduced as new inspectors were appointed.		
1952	More inspectors and assistants appointed. [MR 35:104].		
1974	No.103 issued; also No.119 used again.  Buckinghamshire was mainly unaffected by the local government reform of 1974, but Slough was transferred to Berkshire.		

## BUCKS COUNTY COUNCIL.

NOTICE TO FARMERS, TRADESPEOPLE,  
AND OTHERS.

**T**HE COUNTY INSPECTOR of Weights and Measures will attend at—  
AYLESBURY, The Market, 9 a.m. to 6 p.m., Monday,  
1st June.

Tuesday, 2nd June.

Traders' Names beginning with letters A to Q to attend  
on these dates.

AYLESBURY, The Market, 9 a.m. to 6 p.m., Wed-  
nesday, 3rd June.

Thursday, 4th June.

Traders' Names beginning with letters P to Z to attend  
on these dates.

ASTON CLINTON, Swan Coffee Tavern, 10 a.m. to  
4 p.m., Tuesday, 9th June.

BEILL, Sun Hotel, 10 a.m. to 4 p.m., Wednesday,  
10th June.

IVINGHOE, Town Hall, 10 a.m. to 4 p.m., Tuesday,  
10th June.

LINSLADE—Stag's Head, 10 a.m. to 4 p.m., Thurs-  
day, 15th June.

LONG CRENDON, Lecture Hall, 10 a.m. to 4 p.m.,  
Monday, 15th June.

MARSH GIBBON, White Hart, 10 a.m. to 4 p.m.,  
Friday, 3th June.

QUAINTON—Infants' School, 10 a.m. to 4 p.m.,  
Friday, 28th June.

STEWKLEY, Wesleyan Schoolroom, 10 a.m. to 4  
p.m., Friday, 12th June.

WADDESDON—National Schoolroom, 10 a.m. to 4  
p.m., Friday, 10th July.

WENDOVER, Labourers' Club Room, 10 a.m. to 4  
p.m., Thursday, 11th June.

WING, Mr. Andrew Pollard, 10 a.m. to 4 p.m., Wed-  
nesday, 17th June.

For the purpose of verifying and stamping Weights,  
Measures, and Weighing Instruments, that may be  
brought for that purpose, in accordance with the  
Weights and Measures Acts, 1878 and 1889.

See Bill for full Particulars, or from

T. KYLE,

County Inspector.

Office: 1, Walton Grove, Walton Road,  
Aylesbury.

¶ Notice from the *Buckinghamshire Herald* of 10 March, 1891, following  
Thomas Kyle's appointment as the Inspector of Weights and Measures  
for the County.



## B: Localities with separate jurisdiction in the County of Buckingham


Locality	Status	Marks		Dates & Notes
		Non-uniform	Number pre-1951	
<b>Buckingham</b>	AncBo MB:1835		196	s:1826 [144] r:1862  n:1879-1889

The borough may have used a ‘swan’ mark similar or identical to that used by the county. In 1818 the Clerk of the Peace, George Bradford, was responsible for inspecting weights, balances, and measures. The inspector appointed in 1834 was William Giles, who became superintendent of the borough police force when it was formed in 1836. His appointment as IWM was recorded in 1839 [BH 5/1/39]. In 1847 [K] he was described as high constable, superintendent of police, and inspector of WM. However, the Chief Constable’s report in 1860 [BAAN 10/3/60] concluded that, in Buckingham, the standards had not been verified for twenty years and no inspection was undertaken. Giles resigned in 1863, to be replaced by Humphrey Ray [BAF 26/12/63]. However, P.C. Ray resigned in 1867, when the Borough Authorities failed to fine those charged with having false weights or scales [BAF 6/7/67]. He was succeeded by the head constable John Howe (1867-78), then Job Denson (1878-81, son of the superintendent in Aylesbury [1851 Census]), and John Nobes (1881-89). The borough was disqualified as a WMA in 1889, because its population was less than ten thousand, and it is reported [2] that the standards were sold in 1890 for £17.

**Slough** became a municipal borough in 1938. After the passing of the 1963 Act it applied successfully to become a WMA, receiving the uniform verification number 1023. D.W. Johnson was appointed as chief inspector in 1964 and continued until 1973 [MR 64:274; 73:251]. In 1974 Slough was transferred to Berkshire and the county took over responsibility for WM.



¶ Reverse of a 2 oz brass weight, showing the uniform verification number 1023 for Slough, together with the years of stamping. After 1965 the monarch’s initials did not appear as part of the mark.

Locality	Status	Marks		Dates & Notes
		Non-uniform	Number pre-1951	
<b>Winslow</b>	Manor	 ?	---	s:1847 [967]

In 1847 standards were verified for the Lord of the Manor. The records of the Manorial Court Baron show fines being levied for WM offences in the years 1848-51. In 1861 it was noted that a local trader had refused to produce his weights for inspection by the 'Jury'. [D/82/6Q]. This may have marked the end of the manorial jurisdiction, and in 1867 it was said that inspection had been transferred to the county. The "ancient custom" of trying the weights and measures was revived in 1873 and 1874 [OJ 1/11/73;7/11/74], according to reports of the Leet meetings.

The mark illustrated is rather crudely fashioned, but it occurs quite often on weights with other Buckinghamshire marks, and probably relates to this manorial jurisdiction.



- ¶ Detail from a 4 oz bronze weight, first stamped on the City of London in the time of William IV (1830-37) and then in the Manor of Winslow. The Buckinghamshire weight illustrated on p.4 has a similar mark.

Locality	Status	Marks		Dates & Notes
		Non-uniform	Number pre-1951	
<b>Wycombe</b>	AncBo MB:1835		220	s:1841[876] r:1862  n:1879-1974
<p>The mark used is a mystery, but it may have been a variant of the Buckinghamshire swan, since this is part of the arms of the borough as well as the county.</p> <p>Richard Hailey, the High Constable, was appointed as inspector of WM in 1834. A superintendent of police, George Davis, was appointed in 1839, and standards were obtained in 1841. A regular police force was established in 1849. Davis was described as inspector of WM in 1863 [DA] and 1876 [H], and it is likely that he held this post until his retirement in 1879. Davis was succeeded by Thomas Collins (1879-86) and John Fraser (1886-90), the latter being specifically designated as inspector of WM. In 1891 Oscar Sparling was appointed as chief constable, having already qualified as a WM inspector. He retired in 1913, and the new chief constable being unqualified, a police inspector, William T. Jones, was appointed specifically for WM duties. In 1919 Jones became chief constable, and he continued as the chief inspector of WM, continuing in post after the borough force was wound up in 1947; he was still in post in 1950. He was succeeded by Inspector K.T. Savin, a member of the Bucks County Police, stationed at High Wycombe. In 1955, Savin was transferred to Winslow [BAF 12/2/55] but continued to act as the IWM; he was still in post in 1972.</p>				

## C: The trade in Buckinghamshire

<b>AYLESBURY</b>	
<b>Sarsons</b>	<p>Matthew Sarsons, ironmonger [1891 Census]. In response to the county inspector's warning in March 1891 (see p.8), Sarsons advertised that, as the inspector did not adjust scales and weights, he was able to undertake this work. He claimed that his workmen had been doing this 'for years'.</p> <ul style="list-style-type: none"> <li>• Market Square</li> </ul>
<b>Coltman</b>	<p>Also in 1891, H. Coltman, scale maker, advertised that he would adjust weights and scales in the Meat Market.</p>
<b>Bell</b>	<p>S.J. Bell, scale maker [1926 KM] in Aylesbury at</p> <ul style="list-style-type: none"> <li>• 35B Cambridge St &lt;1926-29&gt;; later at</li> <li>• Bridge Street, Great Kimble, near Princes Risborough &lt;1933&gt;.</li> </ul>
<b>Oakley</b>	<p>E.H Oakley, established 1950 in Aylesbury, at</p> <ul style="list-style-type: none"> <li>• George Street &lt;1961&gt;</li> <li>• 52 Castle Street &lt;1971&gt;</li> <li>• Rabans Industrial Estate &lt;1989-2007&gt;.</li> </ul>
<b>Reverifications</b>	<p>Reverifications Ltd. was founded in 1962 by H.M. Stanley, A.G. Fenton and M.A Wallis. Stanley also had his own firm and was a co-founder of <b>Stanton Instruments</b>. Fenton and Wallis were former employees of <b>De Grave Short</b> (an <b>Avery</b> company). The company moved to Aylesbury from South London in 1966, and was based at</p> <ul style="list-style-type: none"> <li>• Pembroke Road, Stockdale Industrial Estate 1966-2002.</li> </ul> <p>The firm was wound up in 2002, but two small offshoots, 'Weights' and 'DB Scales', continued to operate independently. The former was still based in Great Horwood, Milton Keynes, in 2022.</p>



**Weights and Measures Act, 1889.**

**M. H. SARSONS,**  
**MARKET SQUARE, AYLESBURY.**  
**ADJUSTS AND TESTS**  
**SCALES, WEIGHTS, AND MEASURES.**

**F**ARMERS and TRADERS of all descriptions who Sell by Weight or Measure, must, by the New Act, have all Weights and Measures re-adjusted and re-stamped. This work is not done by the Inspector, he only stamps the same after being adjusted. My Workmen have now for years been round adjusting Weights before being stamped, and all sent to me will be tested and stamped before leaving if requested. It should be understood if Workmen have to be sent out with the Inspector, much higher charges would have to be made than if done at home.

Weights sent at once will receive attention, but do not drive it off to the last day, or I shall be unable to meet the demand.

SCALES, &c., adjusted, tested and plugged.

MEASURES denominated, tested, and repaired.

NEW WEIGHTS, SCALES, and MEASURES, in accordance with the Board of Trade Act.

NEW WEIGHTS supplied ready stamped.

**WEIGHTS AND MEASURES.**

**H. COLTMAN,**  
**SCALE MAKER,**

**W**ILL ATTEND at the ANTE-ROOM, MEAT MARKET, AYLESBURY, on MONDAY, JUNE 1st, and the THREE FOLLOWING DAYS, to Adjust, Denominate, and Repair Weights and Measures to meet the Board of Trade requirements.

¶ Advertisements from the *Buckinghamshire Herald* of 30 March, 1891, that appeared immediately below the advertisement shown on page 8.

S. J. BELL,



Scalemaker

Manufacturer of  
Scales, Weights and  
Weighing Machines.

Repairs to all descriptions of  
Automatic Weighing Machines.

Personal attention given.

Telephone : 201 PRINCES RISBOROUGH, Bucks.

BRIDGE STREET,

GREAT KIMBLE,

Nr. PRINCES RISBOROUGH,

Bucks.

Aug 22 1933

Messrs Odell & Co Ltd  
Stony Stratford

Supplying New

2 7<sup>lb</sup> Counter Imperial oblong  
Tin Pans std. £2-0-0

1 14<sup>lb</sup> " " " £1-3-6

3 Sets of Weights  
2<sup>lb</sup> down to 1/4 oz. std. 12-6

X Carriage 2-0  
Weighed  
Nett £3-18-0

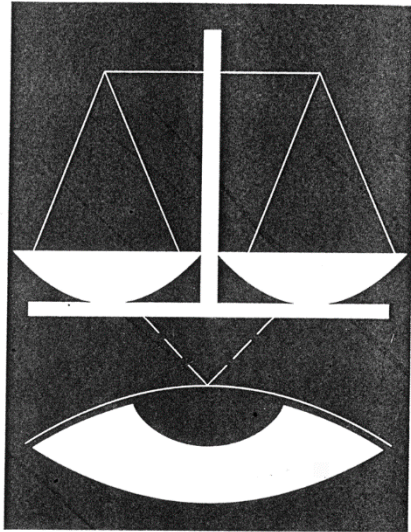
91  
83

With Receipts  
S. J. Bell

Have you seen THE ALL STEEL UNBREAKABLE COAL SCALE

¶ Copy of a receipted bill, from S.J. Bell at Great Kimble in 1933.

# Reverifications Ltd.



Pembroke Road  
Stocklake Industrial Estate  
Aylesbury  
Buckinghamshire  
HP20 1DB

Telephone: 01296 481753

Fax: 01296 485365

Email: [reveri@btinternet.com](mailto:reveri@btinternet.com)

Web: <http://www.btinternet.com/~reveri>

March 1999

¶ The cover of the last printed catalogue issued by Reverifications Ltd, at the end of the twentieth century. Note that the firm already had its own website.

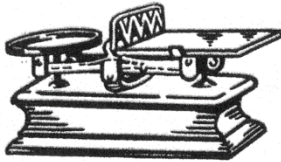
MARLOW	
<b>Gale</b>	<p>Thomas Gale is recorded [1854 K] as a scale maker at</p> <ul style="list-style-type: none"> <li>• Bourne End, Great Marlow &lt;1854-5&gt;.</li> </ul> <p>He was previously a scale maker in Mile End, London, and in 1850 he opened a shop in Oxford.</p>
<b>Lunnon</b>	<p>Thomas Lunnon worked as an apprentice or journeyman with George Bowell in Uxbridge, Middlesex [1861 Census]. Later he worked as a scale maker at</p> <ul style="list-style-type: none"> <li>• Well End, Little Marlow &lt;1871-1895 and</li> <li>• Cores End, Wooburn 1895-1911&gt;.</li> </ul> <p>In the 1911 Census he was listed as a 'weight scale adjuster'.</p>

¶ On the day of the Census in 1851 a group of scale makers gathered at the Swann Inn in Wycombe, possibly for a family wedding. They included Thomas Gale and the young George Bowell, who in 1861 employed Thomas Lunnon in Uxbridge. Another scale maker, Thomas Starback, was also one of the group. Part of the Census Return for the Swann Inn is shown below.

Richard	May	Lodger	Married	Male	41	1810	Whitesmith	Plymouth, Devon, England
George	Bowell	Lodger	Unmarried	Male	16	1835	Scale maker	Bromley, Essex, England
Thomas	Starback	Lodger	Married	Male	38	1813	Scale maker	London, London, England
Edwin	Gordon	Lodger	Unmarried	Male	41	1810	Baker	London, London, England
Sarah	Martin	Servant	Unmarried	Female	17	1834	House servant	Wycombe, Buckinghamshire, England
<b>Thomas</b>	<b>Gale</b>	<b>Lodger</b>	<b>Married</b>	<b>Male</b>	<b>45</b>	<b>1806</b>	<b>Scale maker</b>	<b>Stepney, Middlesex, England</b>



**Scales, Weights  
Weighing  
Machines  
Spring Balances  
etc., of all grades  
for all trades**



**Repairs to  
weighing  
apparatus of  
every description  
Automatic  
weighers, etc.**

¶ Advertisement for F.E. Randall's business in Slough, from Kelly's Windsor and Slough Directory for 1928.

**FREDERICK ERNEST RANDALL**

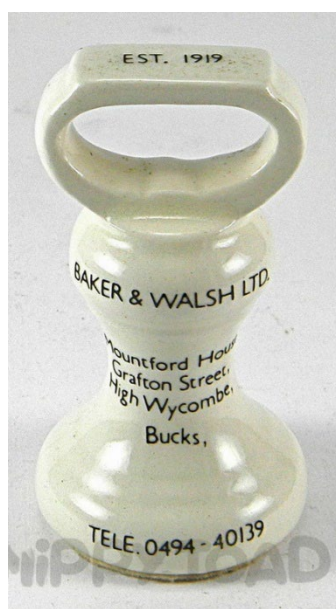
**SCALEMAKERS**

**25a Alpha Street, SLOUGH**

**Contractors for Scales and Weighing Machines  
of all classes. Call or Write for Terms**

SLOUGH	
<b>Pilgrim</b>	W. Pilgrim & Sons was listed as scale repairers, at 45, William Street in 1911 and 1912 [ <i>Hbk</i> ].
<b>Randall</b>	Frederick Ernest Randall, scale maker [advt 1928 KW] at <ul style="list-style-type: none"> <li>• 25a Alpha St &lt;1928-1932&gt;, but there is no record of him by 1935.</li> </ul>
<b>Avery</b>	W & T Avery were first noted in 1939 [K] at <ul style="list-style-type: none"> <li>• 151 High St &lt;1939-48&gt;, • Chandos St &lt;1954-67&gt;, • Petersfield Ave &lt;1971-89&gt;.</li> </ul>
<b>Pooley</b>	At <ul style="list-style-type: none"> <li>• 213 Uxbridge Rd &lt;1948-71&gt;.</li> </ul>

WYCOMBE	
<b>Helmore</b>	In 1893, it was stated that the defendant, in a case brought by Constable Sparling, had a contact with Mr Helmore to “keep his scales and weights right” [ <i>SBS 17/8/93</i> ] but, in 1896, a sale was held of the effects of Mr Helmore, scale maker of Swan Yard [ <i>SBS 5/6/96</i> ].
<b>Burrows</b>	Thomas Burrows was cited as a scale maker of Oxford Road in 1899 [ <i>SBS 24/3/99</i> ]; three years previously he had been in Laura Place [ <i>SBS 21/8/96</i> ]. The 1901 Census lists him as a “sail maker” but he is cited as a scale repairer in 1904 [ <i>BH 28/5/04</i> ] and 1905 [ <i>SBS 19/11/05</i> ]. In the first case, he is giving evidence in a case, supporting the IWM, Oscar Sparling. Although he does not feature in the 1911 Census, his son Thomas does, as a weight/scale adjuster in Wycombe.
<b>Avery</b>	W & T Avery was first noted in 1915 [K] at <ul style="list-style-type: none"> <li>• Saffron Road &lt;1915-1920&gt;</li> <li>• 84A Easton St &lt;1924-1928&gt;,</li> <li>• 25 West Wycombe Road &lt;1965&gt;.</li> </ul>
<b>Baker &amp; Walsh</b>	A ceramic advertising weight, illustrated below, claims that the firm was established in 1919. They have also been recorded in Hounslow, Middlesex. The firm was in High Wycombe until 1998, at <ul style="list-style-type: none"> <li>• Mountford House, Grafton Street.</li> </ul>
<b>Keen</b>	S. Keen was listed as scale maker, at <ul style="list-style-type: none"> <li>• 134 Dashwood Ave &lt;1961-71&gt;.</li> </ul>



¶ Baker and Walsh ceramic bell-weight, made for advertising purposes.

## References for Buckinghamshire

### ***Published works***

1. Alfred G. Hailstone: *One Hundred Years of Law Enforcement in Buckinghamshire*. Richmond: Dimbleby, 1967. Chapter 2 covers the early history of the county force, and in particular the work of Superintendent Job Denson.
2. D.J. Elliott, *Buckingham – The Loyal and Ancient Borough*. London: Phillimore, 1975. See pp.210-211.

### *Directories*

K Kelly's [Post Office] Directory of Buckinghamshire (N112, ST217) 1847-1939  
S Slater's Commercial Directory of ... Bucks ... (N85, ST28) 1850  
M Musson & Craven's Directory of ... Buckinghamshire (ST216) 1853  
DA Dutton, Allen's Directory of ... Bucks (ST40) 1863  
SB South Buckinghamshire Almanac and Directory (ST - ) 1865  
H Harrod's Directory of ... Buckinghamshire (ST55) 1876  
KW Kelly's Directory of ... Slough (ST203) 1889-1950  
KM Kelly's Directory of the ... Metal Trades (ST 2008) 1870-1940.

### *Newspapers*

BAAN Bucks Advertiser and Aylesbury News 1860  
BAF Buckingham Advertiser and Free Press 1863-1955  
BC Berkshire Chronicle 1826-43  
BCG Bucks Chronicle and Bucks Gazette 1849-65  
BE Buckingham Express 1865-81  
BG Bucks Gazette 1834-43  
BH Buckinghamshire Herald 1834-1929  
NBT North Bucks Times and County Observer 1887  
OJ Oxford Journal 1867-1900  
RM Reading Mercury 1831-90  
SBFP South Bucks Free Press, Wycombe and Maidenhead Joournal 1862-65  
SBS South Bucks Standard 1892-1914

### ***Original documents***

#### *Centre for Buckinghamshire Studies (Aylesbury)*

Q/AM/8: Weights and Measures Papers 1800-1821. Contains list of inspectors appointed in 1800, etc.  
Q/CM/3/1: Committee of Quarter Sessions. Reorganisation of the inspection system in 1840-1841.  
Q/SO/\*\*: Quarter Sessions Order Books. Volumes 47, 48, 52, 53, 55 contain significant material relating to WM inspection.  
Q/CM/1/2/A: Authority to enter premises as inspector of WM, March 1868.  
Q/AP/\*\*: Constabulary Police Committee. Occasional references to WM activity, see items 3, 9, 58.  
D/82/6Q: Winslow Manor Rolls. Mention of several WM matters 1848-18.