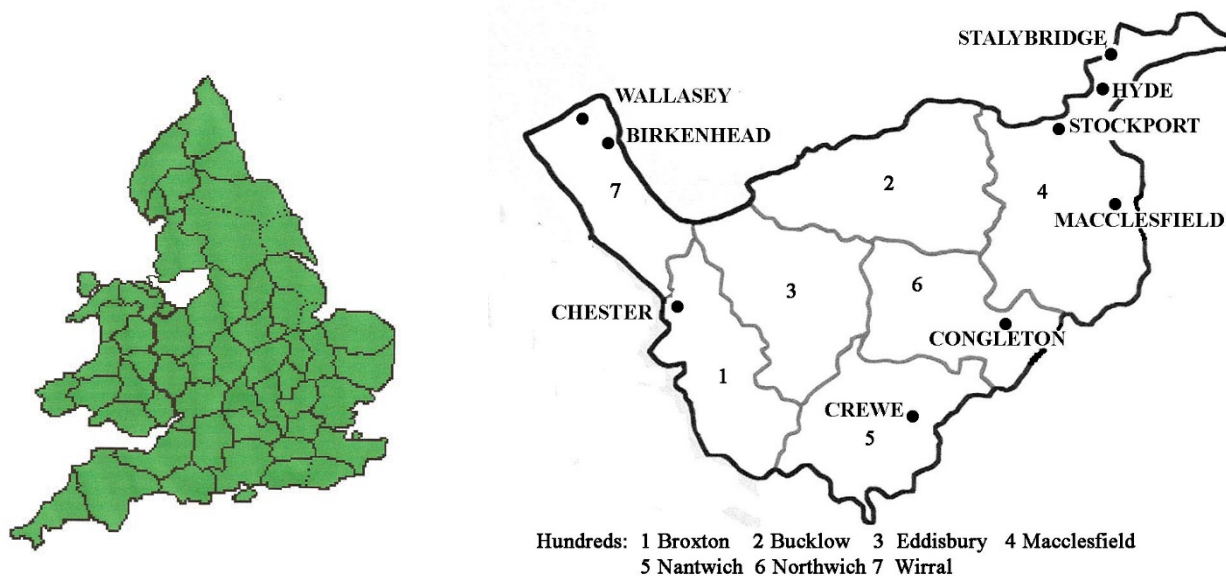


CHESHIRE







Cheshire is a county in the north-west of England. From Roman times onwards it was important because of its position on the borders of Wales. In the nineteenth century it became increasingly dominated by the industrial towns of south Lancashire, in particular Liverpool and Manchester.

The county authorities set up inspection districts based on the hundreds in 1835, and the police took over as inspectors in 1862. In 1890 four civilian inspectors were appointed. The city of Chester was a 'county corporate' and traditionally had separate jurisdiction over local affairs. It gained additional status from the existence of an Assay Office.

There were three other ancient boroughs in Cheshire: Congleton, Macclesfield, and Stockport, the last being partly a manorial authority in the first half of the nineteenth century. New municipal boroughs were established in Birkenhead, Stalybridge, Crewe and Hyde, and these all took on responsibility for weights and measures. Wallasey was separated from Birkenhead and became a county borough in 1913.

In the eighteenth century there were specialist scale makers in Chester, some of them associated with the Assay Office and its activities. In the nineteenth century scales and weights were mainly sold and repaired by ironmongers, some of whom began to specialise in the scale trade. In the twentieth century the large national firms – Avery, Pooley, and ASCO – gradually took over much of the local trade, although a few independent firms survived.

A: Inspection by the County of CHESHIRE

Dates	Events	Marks	Comments
1826	1 set of standards [303] issued.		<i>Distribution of standards 1827</i>
1827	13 'short' sets [380-392] issued, distributed to High Constables of the hundreds.		<i>Broxton, Eddisbury, Wirral</i> Edward Bateman <i>Bucklow</i> Thomas Perris <i>Nantwich</i>
1835	<p>Nine inspectors appointed. [PP1835]. Four full sets of standards [667, 668, 684, 685] obtained, and another two sets [717-718] soon after.</p> <p><i>The Manor of Stockport was a division of the county although the Manor also retained its ancient rights. See Stockport for details.</i></p> <p>Divisions were subsequently combined, and the number of inspectors reduced.</p>	   	<p>Thomas Mellor <i>Northwich</i> Joseph Munday <i>Macclesfield (Stockport divn)</i> William Birch <i>Macclesfield (Prestbury divn)</i> George Burgess</p> <p><i>Inspectors 1835-62</i> <i>Broxton & Eddisbury</i> Charles Broster (1835-) --- Long (-1855-) Enoch Young (-1856-60-) <i>Wirral</i> Samuel Robinson (1835-) Joseph Griffiths (-1854-62&) <i>Bucklow</i> Robert Clarke (<i>West</i>, 1835) William Bowker (<i>East</i>, 1835) Joseph Royle (-1848-50) <i>Nantwich</i> Thomas Mellor (1835) Enoch Young (-1856-60-) George Hewitt (-1860-) <i>Northwich</i> John Henshall (1835) Joseph Royle (-1848-50) <i>Macclesfield (the Manor of Stockport)</i> John Barrow (1835) <i>Macclesfield (remainder of Stockport division)</i> Joseph Middleton (1835)</p>
1860	Four inspectors only [W].		
1862	Police superintendents to be WM inspectors.		
1867	Nine police districts, see p.4.		
1869	Another set of standards [1428] issued, probably because the Bucklow hundred was split into two divisions.		
1879	New standards issued [1643-48]. Numbers 54-63 allocated to ten divisions, as on p.4.		
1881	Number 148 allocated.		<i>Macclesfield (Prestbury divn)</i> Armistead Sedgwick (1835-62) latterly for the entire hundred.



¶ Four weights with different versions of the Cheshire county mark, 1835-1879.





Police superintendents as inspectors 1862-90

These ten districts are listed in Kelly's 1878 Directory in the order below, except that Runcorn follows Altrincham.

<p>1. Broxton 54 John Wilson (1862-78) John Plant (1879-86) Jos. Hollingworth (1886) Joseph Downes (1887-89) George Cope (1889-90)</p>	<p>4. Nantwich 57 Charles Laxton (1862-74) Henry Saxton (1874-78) Evan Mayho (1881-83-) John Plant (-1889-)</p>	<p>7. Hyde 60 Joseph Little (1862-70) John Arrowsmith (1871-78) C. Edwardes (1878-) --- Moore (-1881-) George Lingard (-1883-90)</p>
<p>2. Bucklow Geo. Andrews (1862-69)</p> <p>Hundred split in 1869, into Altrincham and Runcorn.</p>	<p>5. Northwich 58 William Blake (1862-65) Rich. Rowbottom (1865-78) John Hindley (1881-83-)</p>	<p>8. Macclesfield 61 Jas. Williamson (-1863-74) Henry Saxton (-1874-) Thomas Dale (-1877-78-) Benjamin Cooper (1878-81) John Meredith (1881-83-) Joseph Davies (1889-90)</p>
<p>2. Altrincham 55 James Steen (1869-76) Edward Aston (1876-78) John Leighton (1881-89)</p>	<p>6. Wirral 59 Thos. Hammond (1862-71) Wm Egerton (1871-85) John Hindley (1886-1889-)</p> <p>Joseph Griffiths, the pre-1862 inspector, continued to inspect officially in Wirral up to 1870 at least.</p>	<p>9. Stockport 62 James Steen (-1865-69) John Lawton (1869-78-) George Cope (-1881-83-) Jos. Hollingworth (1889-90)</p>
<p>3. Eddisbury 56 David Gwynne (-1865-69) Evan Mayho (1869-81) James Naylor (1881-89) James Walker (1889-90)</p>		<p>10. Runcorn 63 (added 1869) William Egerton (1869-71) Edward Aston (-1875-76) James Steen (1876-78) Saml Williamson (1879-84-) Jos. Hollingworth (1886-) Nathan Large (1889-90)</p>



¶ A 2oz brass weight with the mark of the Runcorn division, 1879-1890. There are also earlier marks from Liverpool.

Dates	Events	Marks	Comments
1889	Cheshire CC set up.		Chief inspectors
1890	Police to be replaced by civilian inspectors. The establishment was a chief inspector and four divisional inspectors: 1 Wirral 54 2 Nantwich 55 3 Altrincham 56 4 Hyde 57 The offices for Divisions 1 and 2 were in Chester, Division 3 in Northwich, 4 in Stockport.	 	W.D. Laird (q1889/90-1929) [MR 45:36] W.J. Hallard (1929-35) [MR 35:104] S.Hallard (1935-58) [MR 58:211] H.Hughes (1958-67) [MR 58:247, 67:103] W.K. Natrass (1967-79) [MR 79:125]
1935	Nos.628-630 issued.		Division 1 (Wirral) W.J. Hallard (q1891/2-1929) J. McKinnon (1929-1936) H. Hughes (1936-58) W.K. Natrass (1958-67) (dep.ch) W.K Dickinson (1967-72-) [MR 67:78]
1939	No.633 issued; numbers used: No.1 division 54 & 629 No.2 55 & 630 No.3 56 & 633 No.4 57 & 628		Division 2 (Nantwich) R. Watts (q1889/90-92) A. Timmis (q1893-1922) S. Hallard (1922-1935) C. Jones (1936-1967)
1949	A deputy chief inspector appointed (H. Hughes) [MR 49:111].		Division 3 (Altrincham) R. Hind (q1889/90-1927) H. Hughes (1927-36) A.R. Dain (1936-c1941) W.K. Dickinson (1946-67) [MR 67:78] J.T. Graham (1967-73) [MR 48: 59, 73:134]
1974	Parts of Cheshire transferred to Greater Manchester and Merseyside.		Division 4 (Hyde) J. Reeves (q1889/90-92) S.Lea (q1893-1929) [MR 48:107] T.L.E. Gregory (1930-1947) F.J. Perkins (1947-56) [MR 56:195] G.E. Dwerryhouse (1956-72-) [MR 56:255]

B: Localities with separate jurisdiction in the county of CHESHIRE



Locality	Status	Marks		Dates & Notes
		Non-uniform	Number pre-1951	
Chester	AncBo MB:1835 CB:1888	c [†] c	121	s:1826 [99]
		c [†] c		n:1879-1974

Other marks, depicting a dagger and two or three wheatsheaves, have also been suggested.

The inspector appointed in 1834 was John Hill [PP1835], who was superintendent of police from 1836 to 1864. It appears that he delegated the duties to a junior police officer, because in 1850 [B] the inspector was named as William Jenkins. In 1855 the borough council expressed dissatisfaction with this arrangement and wished to appoint a civilian inspector. However, the Recorder ignored the Council's wishes and re-appointed Hill. This matter dragged on for several years and was regularly reported in the *Chester Observer* [13/1/55, etc.]. In 1864 Henry Price, superintendent of the market was appointed as inspector. He was still in post in 1902 [K], and probably continued until 1906, when the first qualified inspector was appointed. This was Percy D. Bown, who had qualified in 1901/2 in Crewe, and served in Chester 1906-39 [MR 39:51]. He was followed by Harry Robinson (1939-1974) [MR 74: 51].



¶ Two brass weights with pre-uniform verification marks from Chester. The one on the right also has the uniform number VR 121.



Locality	Status	Marks		Dates & Notes
		Non-uniform	Number pre-1951	
Congleton	AncBo MB:1835 cp	 	492	s:1863 [1336] n:1888-1965

The first mark is part of the seal of the borough, depicting a lion standing on a barrel or 'tun'. The borough appointed inspectors from 1834 onwards, although standards were not obtained until 1863. In 1834 George Barlow, a silk throwster, and Edward Drakeford, a clockmaker, were appointed. Drakeford alone was listed in 1848 [S].

In 1863 standards were issued to John Bohanna, the head constable from 1853 to 1877, and he was listed as the inspector in 1865 [K]. His successor Jonathan Hall was also head constable and inspector of WM; he qualified 1890/1, and retired in 1902. Hall's replacement as chief constable was apparently not a qualified inspector of WM, and it is likely that the county inspector for No.3 Division (Altrincham) was appointed at this time; this was certainly the arrangement in 1912 [Hbk], where R. Hind was listed. However, Congleton formally retained its separate authority until 1964.



¶ The 'lion on ton' mark is scarce, and most Victorian weights from Congleton have the circular mark shown on the right.

Locality	Status	Marks		Dates & Notes
		Non-uniform	Number pre-1951	
Macclesfield	AncBo MB:1835	 	491	s:1826 [109] 1835 [561] 1852 [1076] 1859 [1283] 1882 [1731] 1891 [2216] n:1890-1974



The mark represents a lion holding a sheaf. The second form occurs with dates in the 1850s.

In 1834 William Lockett (CC 1836-40) and George Barber, who had previously held similar appointments, were appointed as inspectors. In 1854 the inspector was Edward Briscall, who was charged with embezzling the money he received for adjusting [Cheshire Observer, 12/8/1854]. He was replaced by Joseph Bramall, listed in 1860 [W] and 1865 [K]. Henry Jackson was listed in 1874 [M] and continued until his death in 1887 [BAIWM 87:5].

Samuel T. Barker qualified in 1889/90 and was listed in 1896. In 1899, after some debate, Walton Bushby was appointed [MR 99:234]. He qualified soon afterwards and served until 1946. He was succeeded by L. Hough (1947-72-).



¶ The first weight has the mark with the lion facing left. The second one has three varieties of the mark, including one dated 1851. Other dates have been seen.

Locality	Status	Marks		Dates & Notes
		Non-uniform	Number pre-1951	
Stockport (Manor)	Manor	 M of S	---	s:1826 [355] 1838 [860]
<p>The Manor of Stockport was geographically part of the Macclesfield hundred of the county of Cheshire. It had been held by the Warren family for many centuries. In 1826 a short set of standards was issued to the steward, and in 1827 Frances Maria Warren became Lady of the Manor. In 1833 her Court Leet appointed several officers, including constables and market-lookers [CC 18/10/1833]. In 1835 the Cheshire Quarter Sessions appointed an inspector, John Barrow, for 'so much of the Stockport Division of the hundred of Macclesfield as is comprised within the Manor of Stockport [PP 1835]. The 'FMW' mark shown above presumably belongs to this time. In 1838 a set of weight standards was issued to T.J. Reed, described as Inspector for the Manor. At his point the situation became yet more confused because the Borough authorities began to assert their rights (see below).</p>				
Stockport (Borough)	AncBo MB:1835 CB:1888		384	Used the manorial standards. n:1881-1974
<p>The town of Stockport was an Ancient Borough, but it appears that in the early years of the 19th century both the county magistrates and the Lord of the Manor. controlled many aspects of local affairs. However, Stockport was created a Municipal Borough in 1835 and in 1837 an Improvement Act led to the re-establishment of the authority of the borough. An inspector of WM, Joseph Larkum, was listed as such in 1840 [R].</p> <p>In the 1850s the manorial rights were formally transferred to the Borough. Larkum was listed as the inspector of WM in 1851, 1861 and 1871 [Census]. In 1874 [M] the inspector was Tom Wimhurst, who moved to Manchester soon afterwards. In 1883 [S] the the inspector was John W. Robinson, presumably not the John Robinson who sold scales and weights at the that time.</p> <p>In 1886 William Linney was appointed. He qualified in 1891/2 and retired in 1924 [MR 30:62]. From 1924 to 1958 the chief inspector was H. Male [MR 58:124; 64:36].</p>				



¶ Four weights from Stockport. (1) A bronze weight with the manorial marks: for the Lady of the Manor, Frances Maria Warren 1835, and M OF S vertically. (2) Another bronze weight with M OF S horizontally. (3) A weight stamped by the borough inspector in 1875, using the lead adjustment on the reverse. (4) A weight stamped with the number 384 in 1903 (Edward VII).

Locality	Status	Marks		Dates & Notes
		Non-uniform	Number pre-1951	
Birkenhead	MktTown MB:1877 CB:1888		86	s:1844 [914] 1875 [1578] 1890 [2164] n:1879-1974

No mark for Birkenhead has been firmly identified, but a lion passant has been suggested.


Although it was not formally established as a Municipal Borough until 1877, there were various forms of local authority, including a police force, well before that. Thomas S. Reed (compare Stockport) was the inspector in 1844, when the standards were issued, and was listed in 1848 [S]. In 1866 the inspector was also superintendent of the market. Thomas Gregory received the standards in 1875 and held both posts in 1878 [K] and 1883 [S]. Walter Egerton was listed as assistant inspector in 1881 [Census], and 1896 [AR]. In 1896 he was assistant to Henry Tudor, a police officer, who qualified 1889/90, and was appointed as chief inspector, retiring in 1929 [MR 39:36]. He was succeeded by H.D. Laird, who qualified in Birkenhead in 1908, worked as IWM in the Mersey Docks, and retired in 1947 [MR 77:126]. F.T. Gough was chief inspector (1948-74) [MR 49:21, 74:115].



¶ A brass weight with the VR 86 mark of the Birkenhead inspector and a date code (1880?). There are also marks for Birmingham and the county of Cheshire.

¶ A penny token used by the Birkenhead inspectors for testing personal weighing machines that were operated by a penny-in-the-slot mechanism. Probably used in the period 1930-1960



Locality	Status	Marks		Dates & Notes
		Non-uniform	Number pre-1951	
Stalybridge	MB:1856	 ?	83	s:1863 [1364] n:1879-1974

Stalybridge is listed under Lancashire in the Fourth Report of the Standards Commission, 1870. However, a footnote says that it is ‘mostly in Cheshire’.

James Ashton is mentioned as the ‘examiner’ of WM in 1860. William Chadwick, head constable from 1862 to 1899, was IWM throughout that period. The first qualified inspector was Arthur Beaumont (q.1899/00 in Clitheroe), who was in Stalybridge 1900-13 [MR 52:87-89].


Subsequent inspectors were Walter Harrison (-1918-35), a police officer, and S. Wedgwood (1938-40-). J.E. Robinson moved to Stalybridge in 1947 and was inspector for the joint authority of Stalybridge, Hyde, and Glossop until 1972 [MR 72:120]. In 1972 R.A. Johnson was appointed as the Chief Inspector [MR 73:278], before WM responsibility passed to the new Greater Manchester Council in 1974.



¶ A brass 2oz weight stamped by the Stalybridge inspector Arthur Beaumont in the reign of Edward VII (1901-1910).

Locality	Status	Marks		Dates & Notes
		Non-uniform	Number pre-1951	
Hyde	MB:1881	---	598	n:1903-1974

It is probable that the Borough of Hyde became a Weights and Measures Authority in 1903, when the number 598 was allocated. John W. Danby, who had qualified in Rotherham in 1893/4, and had been appointed chief constable of Hyde in 1898, held the post of inspector until he died in 1931 [MR 32:9]. The WM department was then separated from the police, and A.W. Garrett was appointed as inspector. He had gone to Hyde in 1926 and left in 1934 [MR 72:31]. He was succeeded by J.E. Robinson, who moved to Hartlepool in 1943, but returned in 1947 to become inspector for the joint authority of Hyde, Stalybridge and Glossop. He was succeeded by R.A. Johnson in 1972, and WM jurisdiction passed to the new Greater Manchester Council in 1974.

Locality	Status	Marks		Dates & Notes
		Non-uniform	Number pre-1951	
Crewe	MB:1877		331	s:1879 [1649] n:1879-1974

The non-uniform mark has been seen on a weight also stamped with the number 331, and it was probably used only for a short period after standards were acquired in 1879. In 1881 the borough council informed the county that they had taken on the role of a Weights and Measures Authority. Samuel Stockton was appointed as inspector at that time, and was still in post in 1892 [AR].

The first qualified inspector was Measham Lea (q1895/6). He was followed by Percy D. Bown (1902-06), J. Chamberlain (1907-08), J.H. Wildman (1908-1911), A.R.G. Holdaway (1911-46) [MR 52:120], W.L. Carty (1946-55) [MR 55:56], and H.W. Pettitt (1955-72-) [MR 55:152].



¶ Detail of a brass weight stamped with the VR 331 mark assigned to Crewe in 1879, and a crowned C.B.

Locality	Status	Marks		Dates & Notes
		Non-uniform	Number pre-1951	
Wallasey	MB:1910 CB:1913	---	540	

Wallasey automatically became a Weights and Measures Authority when it achieved County Borough status in 1913. Its first inspector was James Tudor (q1907 in Birkenhead), who retired in 1945 [MR 45:36]. He was succeeded by J.A.W. Price, who moved to Wallasey from Denbighshire in 1930, became chief in 1945 and retired in 1969 [MR 45:79, 79:15].

C: The trade in Cheshire

CHESTER	
<p>The Chester goldsmiths set up their own arrangements for assaying in the 1680s, and the operation of the Mint at Chester during the silver recoinage of the late 1690s led to official national recognition for the Assay Office. These activities created demand for scales and weights. Among those involved in the trade in the eighteenth century were Richard Brock [EQM 2253-2256] and David Napier [EQM 1299].</p> <p>At the time of the recoinage of gold in the 1770s the Assay Master was John Scasebrick. He stamped his initials (IS) on coin weights sold by Thomas Harrop, brazier and founder, at his shop in Lower Bridge Street. Another local tradesman, John Thomas, pewterer, brazier and scale maker, also offered coin weights stamped with his initials (IT).</p> <p>For more details see [1]. It is not known whether the specialist trade in scales and weights continued into the nineteenth century.</p>	
Shaw	<p>J.G. Shaw, general furnishing ironmonger, retailer of ‘Weighing Machines and the best manufactured Scales, Weights and Measures’ [CO 15/11/1856].</p> <ul style="list-style-type: none"> • 107 Bridge Street, The Cross <1856-58>
Avery	<p>Opened branch in 1900 [CO 30/6/1900].</p> <ul style="list-style-type: none"> • 125 Foregate Street <1900-1906> • 112 Foregate Street <1908-1910> • 4 City Road <1914-1965>
Pooley	<p>First noted 1902 [K]</p> <ul style="list-style-type: none"> • Brook Street <1902-1935>
Berry and Warmington	<p>Branch of the Liverpool firm (see also Wallasey).</p> <ul style="list-style-type: none"> • Seller Street <1928-1935> • Delamere Street <1959>

NEW AND EXTENSIVE SHOW ROOMS,
FOR THE DISPLAY OF
REGISTER GRATES AND CHIMNEY PIECES,
 FENDERS, FIRE IRONS, AND COAL VASES,
KITCHEN RANGES, PATENT KITCHENERS,

Of all makes, and the best Assortment of Kitchen and Culinary Utensils, in Copper, Iron, and Tin.
 IRON BEDSTES, FROM 12s. TO £8 10s., ALL SHOWN IN ONE SPACIOUS ROOM.

Baths, Toilet Furniture, and Japanned and Paper-Mache Trays, &c.

CUTLERY of the best quality.—First-class ELECTRO PLATE, in Cruets, Tea Services, Spoons, Forks, &c.,
 at the most moderate charges.

EVERY DESCRIPTION OF AGRICULTURAL IMPLEMENTS;
 IMPROVED CULTIVATORS, TURNIP AND CHAFF CUTTERS,

CORN CRUSHERS, OIL CAKE BREAKERS, ATMOSPHERIC CHURNS, CHEESE PRESSES,
 and a general Assortment of Dairy Utensils.

Cattle and Pig Troughs, Iron Pumps, Cast Iron Racks & Mangers, Garden Rolls & Chairs,
*Iron Stable Fittings, Galvanised Game Netting, Patent Lawn Mowers, and Cast Iron Spouting, for
 Farm and other Buildings.*

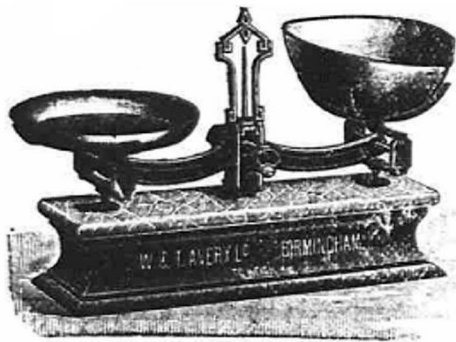
CHURCH, HALL, SHOP, CABIN, AND LAUNDRY STOVES, FITTED COMPLETE.

Sack Barrows, Weighing Machines, and the best manufactured Scales, Weights, and Measures, Nails,
 Chains, and every other description of Cast and Wrought Iron Work.

J. G. SHAW,

GENERAL FURNISHING IRONMONGER, &c., 157, BRIDGE STREET.

THE CROSS, CHESTER.



W. & T. AVERY, LTD.,

Have Opened NEW BRANCHES at
 125, FOREGATE-STREET, CHESTER,
AND
 16, PEN-Y-BRYN, WREXHAM.

GROCERS, BUTCHERS & CONFECTIONERS'
 OUTFITTERS.

REPAIRS EXECUTED.

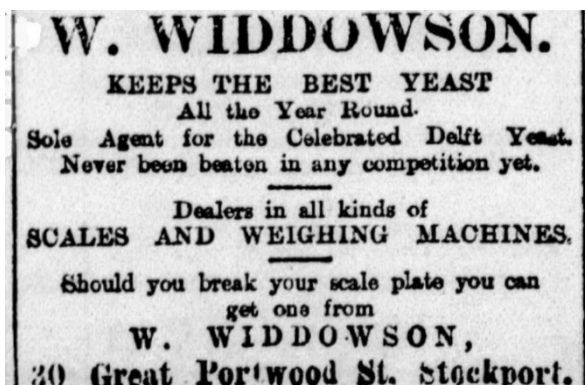
CONTRACTORS FOR THE MAINTENANCE OF ALL
 KINDS OF SCALES AND MACHINES.

¶ Advertisements from the *Cheshire Observer*, 1856 and 1900.

Above: A local ironmonger's advertisement for 'Weighing Machines and the best manufactured Scales, Weights, and Measures', 1856.

Left: In the 1890s the management of Avery's specifically targetted the larger towns. This is an advertisement from 1900, announcing the opening of branches in Chester and Wrexham

STOCKPORT	
Robinson	John Robinson, scale beam and weighing machine maker [1865 K], later known as J. Robinson and Sons [1883 S]. <ul style="list-style-type: none"> • 12 Ridgeway Lane, Middle Hillgate <1865-1910>
Widdowson	Wright Widdowson was a prominent Yeast Merchant. By 1898 he was also offering scales and weights for sale [SA 18/7/98], at <ul style="list-style-type: none"> • 30 Great Portwood Road <1898-1912> By 1924 the firm had specialised in the scale trade [SCE11/9/24], with premises at <ul style="list-style-type: none"> • 25 Warren Street <1924-1939> The firm advertised regularly up to 1939 [SA 6/4/39], but may have been turned over to war work after that.
Jackson	Harry Jackson, repairer [1923 K], scale manufacturer [1928 K]. <ul style="list-style-type: none"> • 2 Avenue Street, Portwood <1928-1939>
Avery	First noted 1934 [K]. <ul style="list-style-type: none"> • 35a Market Place <1934-35> • Hardy's Buildings, Lancashire Hill <1939-1965>
ASCO	See Altrincham.



¶ *Stockport Advertiser*
1 September 1898.



¶ *Stockport County Express*
11 September 1924.

This advertisement coincided with the 'Stockport Industrial Trades and Domestic Economy Exhibition' held in September 1924,

BIRKENHEAD	
Lewis	Joseph Lewis, scale beam maker [1865 K]. <ul style="list-style-type: none"> • 16 Old Chester Road, Tranmere <1865-94> • 30 Green Lane <1873-96>
Sharples	George Sharples, whitesmith [1874 M], Alfred Sharples, scale maker [1894 KLB]. <ul style="list-style-type: none"> • 8 Union Street <1874> • 78 Gladstone Road <1894>
George	Henry George, scale beam maker and William McGowan, scale repairer, also working at the same address [1894 KLB]. <ul style="list-style-type: none"> • 62 Market Street <1894-1913>
Avery	Branch opened in 1906 . <ul style="list-style-type: none"> • 39 Argyle Street <1908-1939> • 2 Borough Road <1965>
Mawby	William Mawby and Son, ironmongers [BN 1/12/1900], listed as scale repairers in 1910 [Hbk]. <ul style="list-style-type: none"> • 7 & 9 Cross Street <1900>
Hinson	Hinson and Co., ironmongers, listed as scale repairers in 1911 [Hbk]. <ul style="list-style-type: none"> • 69-73 Argyle Street <1911>
Pooley	First noted 1911 [Hbk]. <ul style="list-style-type: none"> • 26 Argyle Street <1911>
Wilding	Walter Wilding, scale manufacturer [1914 K]. <ul style="list-style-type: none"> • 1 Cambridge Road, Liscard <1914>
Berry and Warmington	Branch of the Liverpool firm. <ul style="list-style-type: none"> • 17 Canning Street <1923> • 36 Argyle Street <1934>
Davies	E. Davies & Co., scale makers [BN 24/6/50]. <ul style="list-style-type: none"> • 7 & 9 Cross Street <1950>

KITCHEN RANGES,
LEAMINGTON RANGES,
OPEN FIRE RANGES,
PORTABLE RANGES,
SPECIAL FARM RANGES.

—

SCALES AND WEIGHING MACHINES
FOR ALL PURPOSES.

—

W^M. MAWBY AND SON,
GENERAL IRONMONGERS,
7 AND 9, CROSS STREET,
BIRKENHEAD.

Scale and Weighing Machine Repair and
Maintenance Service & New Scales Of All
Types At Lowest Prices.

=====
E. DAVIES & Co.
Scalemakers
7 & 9, Cross Street, Birkenhead
=====

Telephone Birkenhead 262 Bromborough 1048
Any Type And Make Of Scale Repaired.
Maintenance By Contract.

¶ Advertisements for scales being sold at 7&9 Cross Street. The first is from the *Birkenhead News* for 1 December 1900, and the second is from the same source 24 June 1950. The Cross Street premises were part of an imposing edifice, now a Grade II Listed Building.

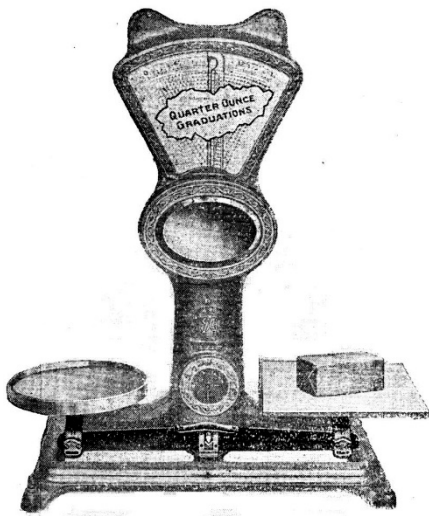
MACCLESFIELD	
Steel	<p>James Steel, scale maker [1857 K]</p> <ul style="list-style-type: none"> • Union Street, Dams <1857> • 51-53 Lowe Street <1883>. <p>Moved to Leek, Staffs by 1894.</p>
Avery	<p>First noted 1923 [K]</p> <ul style="list-style-type: none"> • 4 Stanley Street <1923-1934> • 73 Derby Street <1939-1965>

CREWE	
Avery	<p>First noted 1906 [K].</p> <ul style="list-style-type: none"> • 34 Oak Street, Edleston Road <1906-1908> • 47 Mill Street <1914-1935> • 1 Station Road <1939-1960> • 7 Stalybridge Road <1965>
Pooley	<p>First noted 1908 [Hbk]. The first address may have been the premises formerly occupied by Samuel Stockton, the inspector from 1881 until the 1890s,</p> <ul style="list-style-type: none"> • Nantwich Road <1908-1960> • Railway Approach <1923-1939>

ALTRINCHAM

ASCO	<p>The Automatic Scale Company Ltd, in Manchester by 1916. Moved to Altrincham before 1922.</p> <ul style="list-style-type: none"> • Timperly Works, Broadheath <1922-1966> <p>Known as the True Weight System. Registered the trade mark ASCO in 1932. The company had many branches throughout the country; specifically in Cheshire at Chester and Stockport. See [2], and the advertisements in [MR 30:30 and 31:11].</p> <p>Taken over by the German company Bizerba c.1960. Known as ASCO-Bizerba and still at the above address in 1971.</p>
Hilliker	<p>Albert Hilliker, listed as a scale maker in 1926 [KMT], later known as A. Hilliker and Sons.</p> <ul style="list-style-type: none"> • 46 Greenwood Street <1926-1971>
Avery	<p>First noted 1959.</p> <ul style="list-style-type: none"> • 36 Church St <1959-1965>

TRUE WEIGHT SYSTEM.
EVEN ARM BEAM.



AUTOMATIC SCALE CO., Ltd.

Head Office and Works:
BROADHEATH, ALTRINCHAM, CHESHIRE.
"Phone: Altrincham 1020 (2 lines). Telegrams: "Autoscale, Altrincham."
London Office: 16, GRAY'S INN ROAD, HOLBORN, W.C.
Telephone: Holborn 6364.
Glasgow Office: - 133, MAINS STREET, GLASGOW.
Telephone: Glasgow Douglas 1254.
BRANCHES AND SERVICE DEPOTS IN ALL PARTS.

Tel. Alt. 1085. 40 years' Practical Experience.

A. Hilliker & Sons,
WEIGHING MACHINE MAKERS,
46, Greenwood Street, ALTRINCHAM.

Shop Sundries, Paper, Paper Bags, Knives, Baskets, etc.
Repairs and Maintenance a Speciality.

All Classes of Weighing Instruments Repaired.

Works: New Market Place, Altrincham.

¶ **Left:** Advertisement for ASCO, the Automatic Scale Company, from the Handbook of the Inspectors of Weights and Measures, 1922. The company was based in the USA, but tried hard to conceal this fact.

Above: Advertisement for Hillikers from a local magazine 1932.

STALYBRIDGE

Goodbrand	Scale makers to the textile trades, headquarters in Manchester. Premises in Stalybridge c1920-1940.
Acme	Acme Scale Company, 1928 [K]. <ul style="list-style-type: none">• Grasscroft Street <1928-1939>
Stalybridge	Stalybridge Scale Co. Ltd., 1928 [K]. <ul style="list-style-type: none">• 21 Castle Street <1928-1934> Premises occupied by Ellis Bros. in 1939.
Ellis	Ellis Bros, scale manufacturers, 1939 [K]. <ul style="list-style-type: none">• 21 Castle Street <1939>

WALLASEY	
Wallasey	Wallasey Weighing Machine Co. [1914 K]. <ul style="list-style-type: none"> • 9 and 11 Burnley Street, Egremont <1914>.
Berry & Warmington	A branch of the Liverpool firm, that had branches in Cheshire at Chester, Stockport and Wallasey. <ul style="list-style-type: none"> • 44 Brighton Street < 1934>

AT YOUR SERVICE.

PHONE: **CENTRAL 3466**
(2 lines).
CODES: **A.B.C. 5TH EDITION & BENTLEYS.**

DIRECTORS:
CHARLES BERRY.
J. W. S. WARMINGTON.

BRANCHES—

36, ARGYLE STREET,
BIRKENHEAD.

86, BROMSGROVE ST.,
BIRMINGHAM.

SELLER STREET,
CHESTER.

40, THOMAS STREET,
MANCHESTER.

7, GEORGE STREET,
NOTTINGHAM.

ANCHOR COURT,
PRIARGATE,
PRESTON.

97, CHURCH STREET,
ST. HELENS.

BESCHES LANE,
WYLE COP,
SHREWSBURY.

44, BRIGHTON STREET,
WALLASEY.

MARKET PLACE,
WARRINGTON.



**SERVICE,
ECONOMY.**

**ACCURACY,
RELIABILITY.**

WEIGHING MACHINE SPECIALISTS.

Contractors for Repairs and Maintenance.

**WEIGHWELL WORKS, BYROM STREET,
LIVERPOOL, 3**



Registered Office and Showrooms:
37, BYROM STREET,
LIVERPOOL, 3.

To *Messrs J. H. Weatherby* Date *25th June 1934*

¶ Letterhead from a Berry & Warmington invoice, with details of the firm’s branches 1934, including three in Cheshire.

References for Cheshire

Published works

1. Norman Biggs. 'Provincial coin weights in the eighteenth century'. *British Numismatic Journal* 74 (2004) 102-120. Discusses the Chester Assay Office and the sale of money-scales and weights in the town.
2. E. Cohn and A. Rangeley. 'ASCO'. *Equilibrium* (1997:3) 2157-2160. Several illustrations of ASCO scales but sadly no information on the origins of the firm.
3. 'Personal Weighing Machines'. *Monthly Review*, 39 (1931) 196-198. Chester was the first local authority to make byelaws regarding personal weighing machines, following the Chester Corporation Act of 1929.

Directories

R: Robson's Commercial Directory of ... Cheshire. [N106] 1840
B: Bagshaw's Directory of Cheshire. [N142, ST251] 1850.
K: Kelly's Post Office Directory of Cheshire. [ST252], 1857-1939.
W: White's Directory of Cheshire. [ST253] 1860.
M: Morris & Co.'s Directory of Cheshire. [ST254] 1864, 1874.
S: Slater's Directory of ... Cheshire... . [N83, ST256] 1848, 1883, 1890.
KLB: . Kelly's Directory of Liverpool and Birkenhead [ST762] 1893-97.

Newspapers

AWC: *Adam's Weekly Courant* (5 October 1773, 12 October 1773) and the *Chester News* (8 February 1774, 30 August 1774) contain advertisements for the sale of coin weights.
BN: *Birkenhead News*
CO: *Cheshire Observer* has many reports relating to the activities of the inspectors of weights and measures in the second half of the nineteenth century.
SA: *Stockport Advertiser*
SCE: *Stockport County Express*

Original documents

Cheshire Record Office

CW7/1/1: Indentures for county standards, 1869 and 1879.
LBCR: Records of the Crewe WM department.
QAX/7/* : Quarter Sessions Administration. Many documents, including QAX/7/9, notification of the appointment of Samuel Stockton in Crewe, 1881.
ZCCF/16: Papers of a special committee on Weights and Measures, 1854-55.
ZD/W/* /*: Records of the Chester WM department.

Greater Manchester County Record Office

1434: Documents related to Samuel Lea, a Cheshire county inspector 1893-1929.