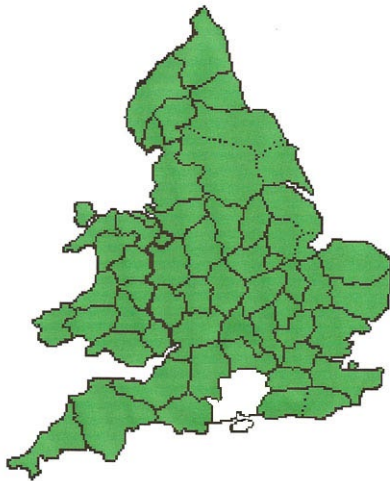


HAMPSHIRE and the ISLE OF WIGHT



Hampshire lies on the south coast of England, and historically included the large island known as the Isle of Wight. The bordering counties are Dorset and Wiltshire to the west, Surrey to the north, and Kent and Sussex to the east. Although the county has large rural areas, it also contains the major ports of Portsmouth and Southampton, as well as several smaller towns, including Winchester, the ancient capital of England.

The county appointed inspectors for thirteen districts based on the petty sessional divisions in 1834, but they were replaced by police officers in 1844. The police force continued to act as inspectors until 1889. At the same time the Isle of Wight became a separate administrative county. The ancient boroughs of Andover, Basingstoke, Portsmouth, Southampton, and Winchester all exercised jurisdiction over Weights and Measures in the 19th century, and they were joined in due course by the seaside resorts of Bournemouth and Ryde.

The scale trade centred on the major ports, with the Sangster family active in both Portsmouth and Southampton before 1850.

**A: Inspection by the County of HAMPSHIRE
(including the ISLE OF WIGHT until 1890)**

Dates	Events	Marks	Comments
1795	High Constables appointed as examiners for 40 hundreds.	C*S	Inspectors 1835-44: <i>A Alton [636]</i> Nathaniel Davis (1835-36) Richard Blunden (1836-44) <i>B Andover [633]</i> Thomas Fouthrop <i>C Basingstoke/Odiham [637]</i> John Renouf <i>D Droxford [635]</i> Edward Wyatt <i>E Fareham [659]</i> Edward Turner (1835-40) George Poate (1840-44) <i>F Kingsclere [634]</i> James Loft <i>G Lymington [656]</i> Thomas Bridle (1835-39) Samuel Belkin (1839-44) <i>H Petersfield [661]</i> William Alberry <i>I Romsey [657]</i> Thomas Butt <i>K Ringwood [660]</i> James White <i>L Southampton [655]</i> James. Plowman (1835-39) Thos Couchman (1839-44) <i>M Winchester [658]</i> Robert Muspratt (1835-39) George Hillyer (1839-44) <i>N Isle of Wight [662]</i> William Allen
1814	72 sets of standards on order for the parishes [PP 1813-14: III].		
1825	One set of standards [68] issued. Examiners were appointed for districts based on the petty sessional divisions.		
1834/5	The existing examiners were appointed as inspectors for the divisions. 13 more sets of standards issued [633-637, 655-662].		
1840	Police force set up.		
1843	Some inspectors said to be unsatisfactory.	C*S A	
1844	From 1844 onwards the police superintendents acted as WM inspectors. Three more sets of standard weights issued [919-921].	C * S H	
	The letters denoting police districts in 1844 were NOT all the same as before (see below). District letters 1835-44: [Q1/38, p.62] District letters 1844 onwards: [Q1/41, p.18] Capt. W.C. Harris was chief constable 1843-56 and several more sets of standards were issued to him: 1847: [956-7], 1853: [1086], 1855: [1132, 1159A]. Subsequently, standards were issued: 1857: [1196A], 1859: [1269], 1882: [1736].	C*S B C*S M	

¶ A bronze weight stamped with the Hampshire C * S mark, standing for the county's old name, the County of Southampton. This weight also bears the marks of the Founders Company of London, one of whose members made it in the reign of George IV after 1826.



¶ A 2oz brass weight stamped in Hampshire, district A (Alton) The style suggests a date c1860-1880, when the inspection was carried out by police officers.

¶ Another 2oz brass weight, this one stamped in district M, Winchester.



Police officers as inspectors 1844-91

The superintendents moved from one division to another very frequently, and many of them appear in several lists. From 1856 a junior officer (usually sergeant) was sometimes appointed assistant IWM to do the work as reported in 4Rep:107.

New districts P (Gosport 1858) and R (Bournemouth 1882) were added after 1844, and Droxford district was united with Fareham in 1862, with a Sergeant appointed to act as the IWM there.

Alton A:

Samuel Everitt 1846-49
George Vincent 1849-52
Thomas May 1852-55
Thomas Drew 1855-57
Isaac Martin 1857-60
Henry Rossiter 1860-65
William Cheyney 1865-78
Joseph Waters 1878-82
Edward Paine 1882-84
William Rapkins 1884-91

Andover B

Charles van Santen 1844-47
James Marks 1847-51
Charles Wedge 1851-62
Thomas Campbell 1862-75
Thomas Fey 1875-76
John Bennett 1876-78
In. George Mintram 1878-81
James Duke 1881-90

Basingstoke C:

Charles Dore 1845-48
William Sparshott 1850-54
Stephen Ayles 1854-55
George Vincent 1856-57
Thomas Drew 1857-62
Charles Wedge 1862-65
Edward Kellaway 1865-72
George Cook 1872-75
In. Robert Brinson 1875-77
In. William Rapkins 1878-84
Edwin Paine 1884-90

Droxford D:

Henry Randoll 1844
Charles Wedge 1844-51
George Vincent 1852-56
Charles Dore 1857-59
John Callingham 1859-62
The Fareham and Droxford Divns were united under Superintendent Drew in 1862, with a Sergeant apptd assist IWM.

Fareham E:

Charles van Santen 1844
Peter Gow 1845-49
David Harvey 1850-62
Thomas Drew 1862-72
James Littlefield 1872-81
George Kinshott 1881-90
Charles Stephenson 1890-91

Kingsclere F:

David Harvey 1846
William Sparshott 1848
Charles Dore 1851-54
Edmund Horan 1854-62
Thomas Fey 1862-75
John Bennett 1875-76
In. Joseph Waters 1876-78
George Kinshott 1878-81
Joseph Waters 1882-90

Lymington (New Forest) G:

Edward Pilbeam 1845-60
Isaac Martin 1860-65
Charles Wedge 1865-67
George Cook 1867-72
Charles Stephenson 1872-74
George Troke 1874-77
William White 1877-90

Odiham H:

John Callingham 1847-59
William Howard 1859-67
George Troke 1868-73
Charles Stephenson 1873-85
Robert Brinson 1885-90

Petersfield I:

... Holloway 1844-48
Thomas Fey 1852-62
G.W. Hull 1862
Charles Stephenson 1862-63
Oliver Longland 1863-67
John Bennett 1867-75
William Masterman 1878-80
In. Henry Ransom 1880-83
In. Henry Adams 1883-85
Henry Ransom 1885-90

Ringwood K:

Samuel Everitt 1844
David Harvey 1848-52
Charles Smith 1852-54
Charles Dore 1854-57
Harrison Stannard 1857-63
Charles Stephenson 1863-72
William White 1872-77
Robert Brinson 1877-85
George Mintram 1885-89
Samuel Foster 1889-90

Romsey L:

... Cooper 1845-46
Charles Gough 1846-47
Stephen Ayles 1847-54
William Sparshott 1854-61
G.W. Hull 1861-62
George Cook 1862-67
William White 1868-72
Edward Kellaway 1872-86
In. Isaac Russell 1886-90

Southampton M:

Oliver Longland 1847-63
Harrison Stannard 1863-80
Julius Sillence 1880-81
George Mintram 1881-85
In. Henry Adams 1885-90

Winchester N:

James Blair 1845-48
Samuel Everitt 1849-72
William Elliott 1872-75
Thomas Fey 1875-81
Julius Sillence 1881-91

Isle of Wight O:

John Callingham 1844-47
Thomas Campbell 1848-62
Edmund Horan 1862-79
Henry Elderfield 1879-83
Henry Ransom 1883-5
Charles Stephenson 1885-90

Gosport (Alverstoke) P:




George Grant 1858-61
George Cooke 1861-62
David Harvey 1862-64
James Horningold 1864-78
William Cheyney 1878-82
George Catchlove 1882-90

Bournemouth/Christchurch R:


In. William Alexander 1882-88
In. James Greenleaf 1888-89
In. William Knapton 1889-91



¶ A 1 oz brass weight, stamped initially in the Ringwood Division (cancelled) and then in Bournemouth in the period 1882-89.

Dates	Events	Marks	Comments
1889	Hampshire CC formed. Isle of Wight became a separate CC.		<i>Qualified inspectors:</i>
1891	Three qualified inspectors take over from police: Gosport 559 Basingstoke 560 Southampton 561		<i>Gosport Division</i> C.E. Davis (1891-1925) [MR 30:179; 37:41] C.O. Perry (1925-26, office moved to Basingstoke)
1926	Gosport office closed. Three divisions reduced to two. North: Basingstoke 559 South: Southampton 561		<i>Basingstoke Division</i> D. Bayley (1891-1926) [MR26: 1277] <i>Southampton Division</i> W.E. Robinson (1891-1923) [MR23: 194]
1940	Chief inspector appointed.		<i>North Division:</i>
c1947	One district only; office in Basingstoke; No.559 only in use, with the surrounding shape indicating the inspector.		C.O.Perry (1926-40) then chief. <i>South Division:</i> E.P. Grigg (1926-c1940)
1960	Office moved to Winchester. [MR 60:35]		<i>Chief inspectors:</i> C.O. Perry 1940-58 [MR 59:4]
1974	County takes over from Portsmouth, Southampton and Winchester.		J.S. Preston 1958-74 [MR 74:94]

County of the ISLE OF WIGHT (from 1890)

Dates	Events	Marks	Comments
1890	The Isle of Wight became a separate administrative unit. No. 520 issued; WM offices in Newport, with the police acting as inspectors.		<p>In earlier times the island was divided into the Liberties of West Medina and East Medina. It was a petty sessional division of Hampshire until 1890 and then an administrative county in itself. For the details from 1835 to 1890 see Hampshire.</p> <p>Supt James Duke 1890-95</p>
1895	First qualified inspector.		<p><i>Qualified inspectors:</i> H.C. Smith (q1894/5) E. Crabtree (q1895/6) [AR 1896]. F. Caulton (q1898/9 - 1899) [MR99:195]. Tertius W.T. Nobbs (q1900/1, still in post 1939) G. Holden (1948-72-) [MR 48:59]</p>
1974	Originally it was planned that the IoW should be re-united with Hants; but at a late stage it was allowed to remain a separate county.		



¶ A 2oz brass weight stamped by the inspector for the Isle of Wight after it became a separate administrative county in 1890. The identity of the maker is a mystery, although there may be a link with William Osland who is recorded as a shopkeeper in Newport in 1898.

B: Localities with separate jurisdiction in HAMPSHIRE and the ISLE OF WIGHT

Locality	Status	Marks		Dates & Notes
		Non-uniform	Number pre-1951	
Andover	AncBo MB:1835 cp		205	s:1826 [153] r:1860 n:1879-1889

Standards [153] were obtained in 1826. William H.W. Titheridge was appointed as inspector [SWJ 22/12/34], as returned in 1835, there being none previously. But in 1848 [K] John Holdup was listed as IWM; when he died two years later, Titheridge was his sole executor.

Inspection seems to have transferred immediately to the County force, Charles Wedge, the then superintendent of police for the Andover district, receiving the standards after their reverification in 1860 [Sbk]. No non-uniform mark has been recorded for Andover, and it is possible that the mark of the county district (C*S and B) was used.

However, the borough retained its authority and, in 1878, Alfred Purkess, the borough surveyor, was appointed IWM, with the Mayor to find a suitable place for housing the standards [HA 14/12/78]. The number 205 was assigned in 1879, and this has been seen on weights.


Alfred Purkess was active as IWM until the borough was disqualified in 1889 because its population was less than 10,000; Purkess was allowed ten guineas in compensation for his loss of office as IWM [AC 15/8/90].



¶ A 4oz brass weight stamped with the uniform mark (number 205) allocated to Andover c1879. This shows that the borough retained its jurisdiction over weights and measures. The weight also bears the mark of the county inspector for district B, the area surrounding Andover.



¶ Detail from a 2 oz bronze weight with, at the bottom, the rare mark of the Borough of Basingstoke. The other marks denote Middlesex, District 3, together with the mark of John Middleton, Inspector in the Town of Reading, 1839-55.

Locality	Status	Marks		Dates & Notes
		Non-uniform	Number pre-1951	
Basingstoke	AncBo MB:1835 ncp		---	s:1834 [529] 1835 [609] r:1860
<p>The inspector named in 1835 was John Renouf, the high constable, who was also the county inspector for the Basingstoke division; he continued as the borough inspector until 1859, although a borough police force was established in 1836, with Stephen Franklin as its superintendent. In 1858, it was argued that the borough superintendent Franklin should be appointed the IWM, without remuneration (Renouf received a salary of £15 per annum) [BC 13/11/58] the appointment being finalised the following year. [RM 2/4/59]. Franklin received the standards after reverification in 1860 [Sbk], retiring in 1861 [HI 3/12/64].</p> <p>Mark Hibberd (CC 1862-89) served as IWM throughout his time as superintendent of the borough police, until the borough was disqualified in 1889, because the population was less than 10,000. The non-uniform mark was still in use in 1882 [AR].</p>				



- ¶ A 1 oz brass weight, stamped in Bournemouth in the period 1891/2-1901.
The B9 is a date code; assuming this began in 1892 gives a date of September, 1893.

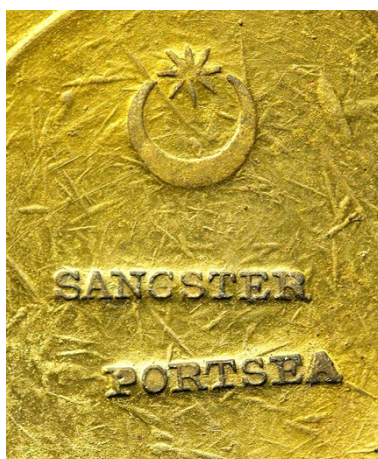
Locality	Status	Marks		Dates & Notes
		Non-uniform	Number pre-1951	
Bournemouth	MB:1890 CB:1899	---	582	s:1892 [2281] n:1892-1974
Bournemouth became a WMA in 1891, soon after being granted borough status. The chief inspectors were: F.W. Dacombe (q1890/1-1929) [MR 36:5], J.S. Blaker (1930-45) [MR 46:3], and J.R. Beasley (1946-69) [MR 69:102].				
Havant and Waterloo. This Urban District became a WMA in 1965.				

WM. LOVE, INSPECTOR OF WEIGHTS AND MEASURES, begs to inform his Friends and the Public that he has on SALE an ASSORTMENT of IMPERIAL WOODEN MEASURES, Brass and Iron Weights, Pewter Vinegar and Spirit Measures, Publicans' Beer Pots, all sizes, Drapers' Yard Measures, &c.
 • Weights and Measures Adjusted and Inspected with the utmost dispatch.
31, Broad-street, Portsmouth.

¶ Advertisement from the Hampshire Telegraph of 5 January, 1835, p. 3.

† To the Worshipful the MAYOR, ALDERMEN, and COUNCILLORS of the Borough of Portsmouth.
 GENTLEMEN,
HAVING received from the RECORDER the Appointment of INSPECTOR of WEIGHTS and MEASURES for the Borough of Portsmouth, permit me to return you my sincere Thanks for the honor you did me in returning my Name as one of the three to that Gentleman for the Situation. I shall endeavour to fulfil the duties of the important Office to your satisfaction and approval.
 I have the honor to be, Gentlemen,
 Your obedient and humble Servant,
GEORGE P. BISHOP.
50, St. Thomas-street, Portsmouth.


¶ Advertisement from the Hampshire Telegraph of 31 October, 1846, p. 8.



¶ Detail from a 1 lb brass weight, made by Sangster of Portsea, showing the mark of Portsmouth. John Sangster was one of the two Inspectors appointed in 1834.



¶ A 4oz brass weight bearing the mark of Portsmouth and the initials of Henry Moncreaff, who was the inspector for over 40 years, starting in 1852.

Locality	Status	Marks		Dates & Notes
		Non-uniform	Number pre-1951	
Portsmouth	AncBo MB:1835 CB:1888 qsb		447 579	s:1826 [314] 1847 [959] 1849 [1031]

The mark represents a moon and star. It is often accompanied by the initials HM (see above).

Standards were issued in 1826 for the use of the 'measurer', John Bishop. Under the Act of 1834 the inspectors appointed were William Love and John Sangster, but both would have been disqualified in 1835, as the latter was a scale maker and the above advertisement explains Love's involvement in the trade. But the Court Leet was still active and in 1838 the Borough Magistrates upheld the fines imposed by them for deficient weights and measures [*HI* 4/8/38]. However, their inspections were desultory and in 1846 questions were raised about the weighing facilities at the docks [*HA* Jul/46]. The Recorder was asked to appoint an IWM [*HA* 8/8/46], George Bishop, a cooper, being his choice [*HT* 31/10/46]. In 1849, George Bishop resigned [*HI* 17/2/49], following a tightening of the inspection criteria, his brother John Prince Bishop being appointed in his stead [*HT* 22/4/49]. But three years later he was dismissed from office "for some alleged neglect of duty" [*PT* 15/5/52].

Henry Moncreaff, the brother-in-law of the Superintendent of police, was appointed IWM in his stead [*PT* 15/5/52]; his initials sometimes accompany the non-uniform mark. He was recorded as the inspector in 1881 [Census] and continued until c1897. His son, A.A. Moncreaff, qualified in 1890/1. In 1896 they shared the inspection, Henry Moncreaff being inspector for the North Division, and A.A. Moncreaff for the South Division.

Subsequently A.A. Moncreaff became chief inspector and continued until his death in 1926 [MR26: 44]. The subsequent chief inspectors were: C.J. Vine (1926-28) [MR 53:168], G.A. Pickering (1930-55) [MR 55:176], and (probably) W.C. Bundy (1955-65) [MR 65:182].

Locality	Status	Marks		Dates & Notes
		Non-uniform	Number pre-1951	
Romsey This ancient borough became a MB in 1835, when it was reported that it had appointed inspector Thomas Butt, who was also appointed for the county district of Romsey. There is no record of standards being issued.				
Southampton	CCorp MB:1835 CB:1888	<div>IV GR ISI</div>	265	s:1825 [12]
		<div>VR ISI</div>		n:1879-1974
<p>In 1825, when Southampton received its standards [12], they were displayed in Nathaniel Pegler’s jewellers and he was appointed the conservator of Weights and Measures for the Town and County of Southampton [HA 19/12/25]. And in 1829 the town council agreed that the Court Leet was ineffective as a means for regulating weights and measures and recommended that the Justices should appoint an inspector [2]. Nathaniel Pegler and George Pegler, his son, were appointed in 1830, and the GR mark shown above may date from this time. However, George Pegler was the sole appointee in 1835 and, although listed in 1836 [F], Nathaniel had died the previous year [HA 24/10/35]. Despite numerous questions about the “inspection” done by George, and his salary, he clung on to the post until his death in 1848; this unsatisfactory period of “inspection” is reflected in the non-uniform VR mark being surprisingly rare.</p> <p>Immediately, on George Pegler’s death, Thomas Ferris applied for his post [HA 11/11/48] but Thomas Slade was the appointee in 1849 [HA 6/1/49]. One of his first actions was to request that that weights and measures be verified; they had been unchecked for twenty five years [HI 27/1/49]. But the following year, Slade tendered his resignation [HC 30/3/50]. It was suggested that the Town Sergeant John Lisle act additionally as IWM for a one-year trial period [HC 30/3/50]; instead he was appointed directly to the post by the Recorder [HI 18/3/50]. Throughout the period 1860-65, there was dissatisfaction as to the way in which inspections were carried out but Lisle remained in post until his death in 1865 [HC 3/6/65].</p> <p>Soon afterwards, Ambrose Harrindaile was appointed IWM for one month [HA 30/9/65] and the new IWM, Charles Gilfoy, was appointed the following year [HC 10/3/66], only to be dismissed the next year for “neglect of duties” [HA 5/10/67]. The next appointee was Hattill Arnold [HA 18/1/68], who, in 1870, was summoned by the County Inspector Superintendent Stannard for stamping weights outside his jurisdiction [HA 22/6/70]; he resigned in 1872 [HI 20/1/72]. The proposal that the Superintendent of Police, Thomas Brearly act as IWM for twelve months was turned down when the Council refused to accept a policeman as the inspector [HA 30/3/72; 3/4/72]. Instead, George Herbert Collis was appointed [HA 18/5/72]; in 1881, his son Frederick Herbert Collis was listed in the Census as the Assistant IWM, continuing as such until at least 1911. Collis was still in post in 1891.</p> <p>The WM office was restructured in 1892, headed by the first qualified inspector, Charles S. Herd (q1890/1 in Guildford), who was in Southampton until 1901 [SC 3/8/87a-c]. He was followed by A.L.P. Holdaway (1901-28) [MR 28:123], L.T. Gunstone (1929-66) [MR 66:148] and J. Trendell (1966-74) [MR 66:54].</p> <p>In 1974 authority passed to the Hampshire County Council.</p>				



¶ Two weights with the conjoined S H monogram of Southampton. The first one has the monogram surmounted by IV / GR, although it may have been stamped in the reign of his successor William IV. It also bears the county mark. The second one is Victorian.

**BOROUGH OF SOUTHAMPTON.
WEIGHTS AND MEASURES,**
5th and 6th William IV., cap. 63.

NOTICE is hereby given,—That I shall attend at the Audit House, in this Borough, every **MONDAY**, between the hours of ten in the morning and four o'clock in the afternoon, for the purpose of Examining, Comparing, and Stamping, if found correct, all such Weights and Measures as shall be brought to me for that purpose.

And all persons using Weights and Measures are required to produce to me, at the times and place aforesaid, the whole of their Weights and Measures, whether in use at their respective residences or elsewhere, specifying in writing their place of abode and the denomination of all Weights and Measures which they may require to be proved and stamped.

All Weights and Measures must be well cleaned and fitly prepared for inspection.

JOHN LISLE,
Inspector of Weights and Measures for the
Borough of Southampton.

Audit House, Southampton, May 27th, 1850.

¶ Notice of attendance of John Lisle from the Hampshire Independent, 1 June, 1850, p. 4



¶ Detail from a 2 oz brass weight, showing the uniform verification number for Southampton, stamped in the period 1901-10.


Locality	Status	Marks		Dates & Notes
		Non-uniform	Number pre-1951	
Stockbridge: a set of standards [214] was verified for this Manor in 1826, and reverified in 1870 (probably for the county).				

CITY AND BOROUGH OF WINCHESTER.

I JOSIAH CARTER, the Elder, Inspector of Weights and Measures of the said City and Borough, *Do hereby give notice*,—That I shall attend at the Guildhall of the said City and Borough, on Monday the 11th day of May instant, and five following days, from nine o'clock A.M. until five o'clock P.M. on each day, for the purpose of examining, comparing, and stamping, if found correct, all such weights and measures as shall be brought to me for that purpose, as directed by the 24th section of 5th and 6th Wm. IV. cap. 63; and every person using any weight or measure which has not been so examined, compared, and stamped, as aforesaid, will, by the 21st section of the same Act, be liable to a penalty of £5.

Dated this 11th day of May, 1849. J. CARTER.

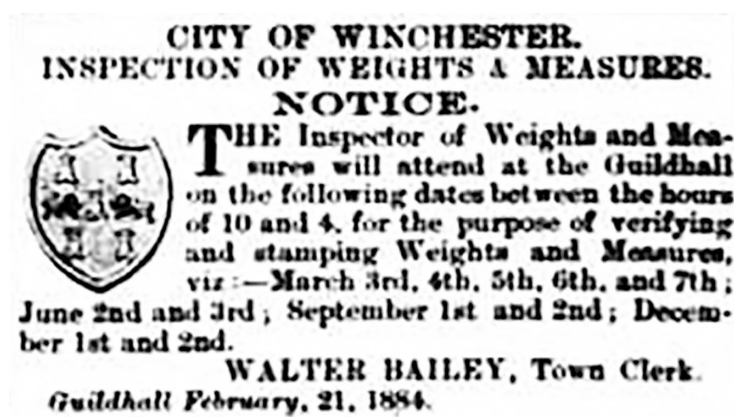
¶ Advertisement from the Hampshire Chronicle of 5 May, 1849, p. 1.

Locality	Status	Marks		Dates & Notes
		Non-uniform	Number pre-1951	
Winchester	AncBo MB:1835 qsb	 ?	511	s:1826 [157] 1847 [966] 1859 [1281] r:1866 n:1888-1974

In 1834/5 the inspector appointed was Robert Muspratt, ironmonger, who was also inspector for the Winchester division of the county. He was replaced by Josiah Carter in 1835 [*HA* 3/1/35].

In 1847 [*Sbk*], the standards were sent to Josiah Carter, inspector. But, the previous year, Josiah Carter, Sen, had retired from his whitesmith business, in favour of his son Josiah [*HC* 30/5/46]; did the post of IWM also pass from father to son? At this stage, the Court Leet was still regularly inspecting the weights and measures. But by 1849, the inspector was required to carry out the inspection and Carter's salary was raised from £5 to £20 per annum in recognition of this [*HA*, *HI* 5/5/49]. He continued in post until his death in January 1859. The next month, Edward Ventham was appointed as IWM for one year [*HC* 12/2/59], remaining in post until 1882 [*HC* 9/12/82]. James Bennett was appointed in his stead [*HI* 6/1/83], retiring in 1890 [*HC* 8/2/90].

During the 1890s the situation was very volatile. In 1890, T.J. Walker was appointed IWM, subject to qualifying. Later that year Arthur Freemantle did qualify and took up the post of IWM [*HC* 15/11/90]. But William Futchter, the school attendance officer, was appointed as the IWM in 1891 [*SE* 6/3/91], qualifying soon afterwards [*SE* 5/6/91]. By the end of 1892, Futchter was IWM in West Cornwall [*Ctel* 3/11/92] and the inspector named in 1892 [*AR*] was John Bennett, said to be temporary, possibly the retired police superintendent from Andover. Alfred E. Holdaway qualified in 1892/3 and was listed 1893-96 [*Wa*] but in 1896 [*AR*] another unqualified person, W.H. Thorpe, was listed. James Lalor (q1895/6 in Ireland) was named in 1899 [*Wa*]. He was followed by A.L.P. Holdaway (q1899/1900), who also took on the Southampton appointment in 1901; however, he resigned the Winchester appointment in 1909. James N. Campbell was listed 1910-13. Subsequently, the inspectors were also police officers: A.J. Hunt (q1913-1923), W.G. Stillman (1925), H.R. Miles (1926-43, also CC 1942-43). The borough police force became part of the Hampshire force in 1943, and the county inspectors acted thereafter. A formal arrangement was made in 1951.




¶ Notice of attendance for James Bennett, published in the Hampshire Chronicle of 1 March, 1884, p. 8



¶ Detail of the lead plug in the base of the Howard of Southampton weight (see below), stamped in the City of Winchester in 1933, during the reign of George V.

Locality	Status	Mark		Dates & Notes
		Non-uniform	Number pre-1951	
Newport was an Ancient Borough, standards [76] being issued in 1825, and became a Municipal Borough in 1835. In that year, the inspector for the Isle of Wight division of the county was also appointed as inspector for the borough, but there is no evidence of WM activity separate from that of the county.				

Locality	Status	Mark		Dates & Notes
		Non-uniform	Number pre-1951	
Ryde	MktTownM B:1868		548	s:1831 [439] r:1874 n:1891-1922
<p>Although standards [439] were obtained in 1831, no record of inspection prior to the granting of the charter in 1868 has been found. The borough police force was established in 1869; its chief constable, John H. Burt (CC 1869-80), was appointed the IWM [<i>HA 13/2/69</i>], receiving the standards after reverification in 1874 [<i>Sbk</i>]; he remained in post until his death in 1880. George Hinks (CC 1880-1903) was listed as the IWM in 1892 [<i>AR</i>] and 1889 and 1899 [<i>K</i>]. Charles Greenstreet (CC 1903-22) took over as IWM in 1903 [<i>MR03: 203</i>], having qualified in 1902/3 in Margate, retiring in 1922 [<i>IOWO 17/12/21</i>]. The borough police force was wound up in 1922, inspection passing to the county.</p>				



- ¶ Detail from an 8 oz brass weight, originally verified in Portsmouth by Henry Moncreaff, after 1852. The weight then moved to the Isle of Wight, bearing the county stamp used there until 1890. It also carries the uniform verification number for the island, dating to 1890-1901 and finally the mark for Town of Ryde, dating the period 1868-1901.

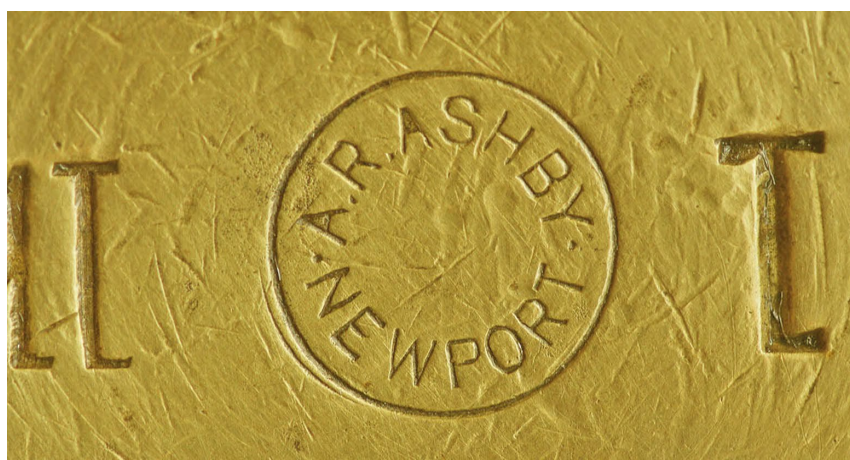
C: The trade in HAMPSHIRE and the ISLE OF WIGHT

ALDERSHOT	
Bannister	<p>Charles Bannister, b. 1852, began his career as a scale maker in Godalming in 1881 [Census], was in Horsham in 1891[Census] but was listed as a scale repairer in Aldershot in 1898 [K] and as a scale maker there in 1901 [Census].</p> <ul style="list-style-type: none"> • St Georges Road <1898> • 4, Frederick Street <1901> <p>C. Bannister & Co., scale makers, were listed in 1906 [Hbk].</p> <ul style="list-style-type: none"> • 188 Victoria Road <1906-1915> • Alfred Street <1927-1931>. <p>The firm was acquired by Avery in 1935.</p>
Avery	<p>W & T Avery was first noted in 1906 [Hbk]</p> <ul style="list-style-type: none"> • York Road <1906-11> • 172 Victoria Road <1915> • 107a Victoria Road <1927-35>. <p>In 1955, it was reported that a branch of Avery's had been opened two years previously [AN 15/7/55].</p> <ul style="list-style-type: none"> • 86 St Georges Road East <1965>.
BASINGSTOKE	
Avery	<p>First noted 1929 [KBasingstoke]</p> <ul style="list-style-type: none"> • 6 Mortimer Lane <1929-1974>



¶ A 2oz brass weight bearing the name of W. Haydon, an ironmonger of Bournemouth. It also has the Bournemouth uniform number 582 and a date code C3, which may indicate March 1893.

BOURNEMOUTH	
Haydon	William Haydon, b. 1854, was cited as an ironmonger [1881-1911 Census]. <ul style="list-style-type: none"> • 268 Old Christchurch Rd <1881-1915>.
Howard	A branch of A.C. Howard, the <i>Southampton</i> firm, was established here by 1901 [<i>BDE 31/1/01</i>]. <ul style="list-style-type: none"> • 31A Holdenhurst Road <1901-1914>. The parent firm was acquired by W & T Avery in 1914.
Avery	W. and T. Avery, Ltd was first noted in 1909 [<i>BDE 08/05/09</i>]. <ul style="list-style-type: none"> • 127A Holdenhurst Road <1909-11> • 79 Holdenhurst Road <1938-1965>.
Curtis and Hoskins	Curtis and Hoskins, scale makers were listed in [1915 Bennett], the company being acquired by Avery in 1917. <ul style="list-style-type: none"> • 67A Holdenhurst Road <1915>
South Coast	The South Coast Scale Co, was listed in 1927 [K]. <ul style="list-style-type: none"> • 133A Holdenhurst Road <1927> • 139 Holdenhurst Road <1931-1938>.
Stigwood	Edwin Charles Stigwood was listed as a scale maker in 1935 [K]. <ul style="list-style-type: none"> • 21 Bennett Street <1935>.
Pearce and Pearce	Peacce and Pearce were listed as scale makers in 1935 [K], the repair and contract side of the business being acquired by Avery in 1936. <ul style="list-style-type: none"> • 368A Holdenhurst Road <1935-38>.
FAREHAM	
Clark	Henry Clark, scale maker and ironmonger advertised for a scale maker in 1891 [<i>PEN 13,14/11/91</i>] and again in 1897 [<i>PEN 4/1/97</i>].



¶ Detail from a 1 lb brass weight; the lead plug on the reverse bears the GR599 mark of the Gosport Division.

SALE OF COAL ACT, 1889.

THE County Council By-laws require that a reliable Weighing Instrument should be carried with every Coal Cart.

THERE IS NOTHING IN THE MARKET TO BEAT

**SHIELDS'S
PROTECTED STEELYARD**

FOR CHEAPNESS, LIGHTNESS, ACCURACY,
AND NEATNESS.

Made specially to comply with the above By-laws ;
every one stamped by the Government Inspector for
the Island.

Over 50 already sold to Coal Dealers.

All orders will be executed in rotation.

~~va~~ Caution.—Spring Balances are not in accordance
with the By-laws of our County Council.

Order at once to ensure early delivery.

All these Steelyards are made in the Island.

ADDRESS : SHIELDS, SCALE MAKER,
8, CARISBROOKE ROAD (top of High-street),
NEWPORT, I.W.

¶ Advertisement from the Isle of Wight County Press of 14 March, 1896.

NEWPORT (Isle of Wight)	
Shields	Edwin Shields, a scale and weight maker, sold his Southampton business in 1891. In 1892, it was reported that Shields was no longer in the employ of Sangster [<i>PEN</i> 4/10/92]. By 1895, he was in Newport, advertising in 1896 as a scale maker [<i>IOWCP</i> 14/3/96]; however the 1901 Census lists him as an assurance agent, living in Chiswick.
Ashby	Arthur Robert Ashby, b. 1879 in Maidstone, Kent, was working as a scale maker in Newport by 1901 [Census], setting up his own business by 1905 [KMT]. He described himself as a scale maker, but chiefly a dealer and repairer [1911 Census]. By 1939, the scale business was linked to that of tobacconist and confectioner, that his daughter Gladys managed. Arthur Ashby died in 1941 [<i>IOWCP</i> 11/10/41], the business continuing under the name of A.R. & G. Ashby. <ul style="list-style-type: none"> • 4a Holyrood St.<1905-49>. A set of scales marked A.R. & G. Ashby has been seen.
Osland	F. OSLAND MAKER
	<i>Seen on 2oz brass weight with VR520 mark (illustrated above)</i> (Possibly) William Alfred Osland, shopkeeper [1898 K], brother of Frederick Osland, at 77 Upper St. James St, Newport.
Avery	W & T Avery was first noted in 1898 [K]. <ul style="list-style-type: none"> • 63a Pyle Street <1898-1902> • 16 High St <1965>.

PORTSMOUTH (including Landport and Portsea)	
Sangster	<p>SANGSTER PORTSEA</p> <p><i>Seen on brass weights (illustrated above)</i></p>
	<p>John W. Sangster moved from Stepney, London to Portsea, establishing his business in 1816; he came from a tradition of scale, scale beam and weight makers. His son, also John William, b.1822, was working in the business by 1841; on his father's death in 1846 [HT 21/11/46], the trading name of Sangster & Son, reverted by John Sangster, who ran the business until his death in 1892.</p> <ul style="list-style-type: none"> • 2, Camden Alley 1816-38 • 87 Queen Street, Portsea 1838-1892 <p>Sangster & Co/J.W. Sangster advertised at this address between 1895 and 1903; the premises and name of Sangster & Co were auctioned on 28 October, 1909 [PEN 20,27/10/09]. In 1895, Sangster had advertised that he was not connected with any other of the same name [PEN 8/4/95].</p> <p>Robert Sangster, son of John, born in 1818 in Portsea, was bound to Edward Abraham de Grave in 1833, and was a scale maker in Southampton between 1840 and 1850 (see below). Following his bankruptcy there, he set up again in Portsea at:</p> <ul style="list-style-type: none"> • 41 St James's St 1850-61>. <p>By 1865, he had moved to Landport [PT 11/3/65]; for a period in 1871, he advertised under the name of the South Hants' Scale, Beam, Mill and Patent Weighing Machine Co. [PT 25/3-7/10/71]. And in 1876 he was advertising that he had no connection "with any other house of a similar business" [HT 15/7/76-7/2/77].</p> <p>Again, in 1883, he changed the name, this time to The Landport Scale and Weighing Machine Manufactory [PEN 1/9-30/11/83]. But, in 1888, he was declared bankrupt again [HT 25/2/88; 17/3/88], thirty seven years last November since he established his Portsmouth business. He died the following year [HT 5/10/89].</p> <ul style="list-style-type: none"> • 286 Commercial Road <1865-1888 • 11 Staunton Rd 1889.
Cray	George Cray was cited as a scale maker [HA 19/11/36; 15/8/40], at 111, St Mary's Street but he died in 1845.
Smith	Henry Smith was listed as a scale maker in 1848 [K] <ul style="list-style-type: none"> • Great Charlotte Street, Landport <1843-48>.
Couzens/ Avery	George E. Couzens, ironmonger, was an agent for Avery's in 1893 [business card]; he was listed as a scale maker there in 1906 [Hbk]. <ul style="list-style-type: none"> • 219-223 Commercial Road. <p>Avery was listed as a separate concern in 1898 [K], at</p> <ul style="list-style-type: none"> • 243-5, Commercial Road <1898-1906> • 280 Commercial Road <1915-1935> • 288 Fratton Road <1965>.

Gould

A.E. Gould was listed as a scale maker in 1898 [K].
 • 154 Lake Road <1898>.

ROBERT SANGSTER,
41, ST. JAMES'S STREET, PORTSEA,
 (LATE OF SOUTHAMPTON,
MANUFACTURER OF ALL KINDS OF SCALE BEAMS, PORTABLE WEIGHING MACHINES,
 FOR THE USE OF SHOPS, STORES, WHARFS, SHIPS, &c.; ALSO
IMPROVED STEEL MILLS OF EVERY DESCRIPTION,
 FOR GRINDING SUGAR, COFFEE, COCOA, PEPPER, MALT, BEANS, PEAS, OATS, WHEAT, BARLEY, AND SEEDS OF ALL KINDS:
Every description of Scales and Weighing Machines Repaired, and Mills Re-cut.
 Shopkeepers supplied with Coffee and other Canisters, Coffee Show Boxes, Treacle Cans, Snuff and Tobacco
 Jars, &c., &c.
COUNTRY ORDERS PUNCTUALLY ATTENDED TO.
 AN APPRENTICE WANTED.

Note the Address: — **41, ST. JAMES'S STREET, PORTSEA.**

¶ Advertisement for Robert Sangster, after his move
 from Southampton to Portsea in 1850.



¶ Business card, posted in 1893, to a Portsmouth coal merchant.

SOUTHSEA

Shields

Edwin C. Shields was listed as a scale maker, in 1889 [K] but transferred his business to James Southey, of Kings Road, in 1891 [*PEN 8-14/7/91*]; he still appeared in the 1891 Census as a scale/weight maker.
 • 2 Somers Road <1889-91.

Drover	James Drover, advertising between 1892 and 1894, was mainly a scale repairer, working at <ul style="list-style-type: none"> • 39, Hyde Park Road <1892-94>.
Barwood	Albert Barwood, born in 1869 in Winchester, was a scale maker [1901 Census], at: <ul style="list-style-type: none"> • 35, Orange Street <1901> • 23 St James Road <1906-1915>. Barwood & Son were at the same address <1926-1949>.



¶ A 2oz brass weight bearing the name and address of Albert Barwood of Southsea.

¶ An advertisement from the Portsmouth Evening News of 24, June, 1909, p. 2

Some More About Our Weighing.

ALL our Scales are examined every three months by an Expert. We ask you to read what he says about his work.

“ This is to certify that I have instructions from Messrs. W. Pink & Sons to thoroughly examine every scale and weight in use in their shops every three months, and to keep them in a perfect state of repair. All parts are renewed directly they show any signs of wear, and no expense whatever is spared in keeping both scales and weights as accurate as it is possible for human skill to keep them.”

(Signed) A. BARWOOD,
Scale Maker,
St. James' Road, Southsea.

Pinks' Stores, Portsmouth and Emsworth.

ROBERT SANGSTER, (from London), SCALE MAKER and GENERAL MACHANIST, 5, French Street, Southampton, Manufacturer of Improved Steel Mills, begs most respectfully to return thanks to his Friends of the borough of Southampton and its adjacent towns, for the liberal patronage which he has been favoured with during the five years of his being in business, and hopes, by economy and strict attention, to merit a continuance of the same.

R. S. has made such alterations in his premises as will enable him to manufacture every description of Scale Beams, Weights, Steelyards, Patent Weighing Machines, Portable Weighbridges, Weighbridges for Roads, Wharfs, Quays, &c. upon an improved principle and large extent.

Also, all kinds of Steel Mills for grinding coffee, pepper, tea, sugar, spices, cocoa, peas, beans, wheat, barley, malt, oats, and seeds of every description, made to work by hand, horse, steam, or any other power.

Sets of MILLS for Grocers, to be driven by steam, on show at the Maker's, 5, French-street, Southampton. Mills fitted to breweries and other establishments. Old Mills re-cut, and Machinery Repaired.

Corporations supplied with Standards,—Old ones rectified.—Scales and Weights kept in Repair by the Year.

Apprentice Wanted with moderate Premium.

R. SANGSTER, (successor to the late SHELTON), No. 3, French-street, Southampton, Established A. D. 1770, Ironmonger, Stove and Grate Manufacturer, Brazier, Tin, Iron, and Zinc Plate Worker, Bellhanger, Locksmith, Gasfitter, and Wire Worker. Hot-houses and Conservatories heated with Hot Water.

R. S. begs most respectfully to inform the nobility, gentry, and inhabitants of Southampton and its vicinity, that, having taken the above premises and Stock, he hopes, by strict attention and punctuality, to merit a continuance of the patronage which has been so long shewn to the above establishment.

N.B.—Country orders punctually attended to.

ROBERT SANGSTER, 5, French-street, (opposite St. Michael's Church,) Southampton, maker of all kinds of Scale Beams, Weights, Steelyards of superior metal adapted to any climate, Weigh-bridges for Wharfs and Roads, and Patent Weighing Machines of every description.

IMPERIAL STANDARD WEIGHTS AND MEASURES FOR CORPORATIONS.

Scales and Weights kept in repair by the year.

R. S. in returning his sincere thanks for past favours shewn to him by his numerous friends and the public generally, can assure them that he has neither disposed of his business, nor has he connections with any other person, but that his establishment is solely carried on by himself and only under his own superintendence, trusting by his strict adherence to the same to merit their future patronage.

¶ Two advertisements from the Hampshire Advertiser, dated 8 March, 1845 and 20 February, 1847, p. 1, respectively.

Below his advertisement from the PO directory of Southampton, 1847.



ROBERT SANGSTER,

No. 5,

FRENCH-STREET, SOUTHAMPTON,

Opposite St. Michael's Church.

MAKER OF ALL KINDS OF
SCALE BEAMS, WEIGHTS, STEELYARDS,
Of Superior Metal, adapted to any climate; and
PATENT WEIGHTING MACHINES,
OF EVERY DESCRIPTION.

Imperial Standard Weights & Measures for Corporations.

SCALES & WEIGHTS KEPT IN REPAIR BY THE YEAR.

MANUFACTURER OF
IMPROVED STEEL MILLS,
FOR

*Grinding Sugar, Coffee, Tea, Pepper, Beans, Barley, Oats,
Wheat, Peas, and Seeds of any description,*

WORKED BY STEAM, HAND, OR ANY OTHER POWER.

**SETS OF MILLS FOR GROCERS,
TO BE DRIVEN BY STEAM,**

On show at the Maker's, 5, French-street, Southampton.

OLD MILLS REBUILT.

N.B.—Sole Manufacturer of the Patent Emigrant's Flour Mill.

SOUTHAMPTON	
Sangster	<p>Joseph Sangster was listed as a scale maker in 1843 [PO]</p> <ul style="list-style-type: none"> • 12 West Street <1843> <p>Robert Sangster b.1818, son of John Sangster of <i>Portsea</i>, was apprenticed to de Grave of London in 1833 and set up as a scale maker in Southampton in 1840, taking over the premises of Sheldon (a whitesmith), according to his 1845 advertisement [HA 8/3/45]. But, by 1847, he had sold some of these premises, 3 and 45 French Street, [HA 30/1/47], although he hastened to reassure his customers that he, and only he, was in charge his business [HA 20/2/47]. But in October, 1850, there was a sale of his stock-in-trade (by deed of Assignment for the benefit of his Creditors) [HI 26/10/50].</p> <ul style="list-style-type: none"> • 5 French St 1840-50. <p>He began a new business in Portsea around 1853 (q.v.).</p>
Fry	<p>In 1847, John Fry acquired Sangster's premises in French Street, advertising himself as a blacksmith, coppersmith, tinsmith and brazier; however, when the premises were destroyed by fire in 1852, he was described as a scale maker [HA 24/7/52].</p>
Wren	<p>William Wren, from London, advertised as a scale maker etc. in 1853 [POS]. He applied for the post of IWM in 1865 [HA 25/11/65] and his name was proposed again for the post in 1872 [HA 18/5/72], despite his ineligibility.</p> <ul style="list-style-type: none"> • Upper Back of the Walls <1853-85> <p>Wren was not there in 1884 [S], although he was reported as receiving payment for the upkeep of the scales of the Department of WM in 1885 [HA 11/4/85]. By 1887 [KS] A.C. Howard was at this address.</p>
Howard	<p>David C. Howard, b.1825, who took over the 'Veterinary Forge', formerly G. Love, in 1859 [HI 8/1/59], was a blacksmith, who advertised weights, scales, etc. in 1865 [I].</p> <ul style="list-style-type: none"> • 114, East Street 1859-81> <p>Alvin C. Howard (1859-1932, son of D.C. Howard) trained as a blacksmith under his father and was listed as a scale maker in 1887 [KS] at Wren's former premises; he had moved to the family premises by 1897.</p> <ul style="list-style-type: none"> • Upper Back of the Walls <1887-89> • 114 East Street <1896 –1914. <p>The business was acquired by Avery in 1914, who were in business at this address in 1915 with A.C. Howard as the manager.</p>

WILLIAM WREN,
 (FROM LONDON,)
PATENT SCALE-MAKER,
ENGINEER,
AND GENERAL MACHINIST,
 NEAR ALL-SAINTS' BURIAL GROUND, SOUTHAMPTON,

MANUFACTURES AND REPAIRS

**All kinds of Scales, Weights, Weighing
 Machines;**
SUGAR, COFFEE, PEPPER, & MALT MILLS.



**Scales and Weights Cleaned and Adjusted
 by the Year or Job.**



**Standard Weights and Measures for
 Corporations.**

**Adjuster of Weights & Measures to Imperial
 Standard.**

Private Residence :—BACK-LANE, PORTSWOOD.

¶ Advertisement from the PO directory of Southampton, 1853 for William Wren,
 who filled the gap left by Sangster's departure.

114, EAST STREET, SOUTHAMPTON.

D. C. HOWARD,
 (LATE G. LOVE,)
VETERINARY FORGE
 AND
INFIRMARY.

HORSES SHOD ON THE MOST NATURAL & IMPROVED PRINCIPLE.
All kinds of SMITH'S Work executed on the Premises.

WEIGHTS, SCALES, WEIGHING MACHINES,
 Also COFFEE and SPICE MILLS of every description supplied at the
 Market Prices.
 Weights and Scales adjusted, and Old Mills recut.

¶ Advertisement from Harrod's Directory of Hampshire for 1865.

**ALVIN C. HOWARD,
SCALE MANUFACTURER &c.,
114, East Street, SOUTHAMPTON**

ESTIMATES GIVEN. LOWEST PRICES
CONSISTENT WITH GOOD WORK.
Weights and Scales kept in Repair by Contract for
the Year, or otherwise.
Agent for PARNALL & SONS', LIMITED, "NATIONAL
BALANCES."

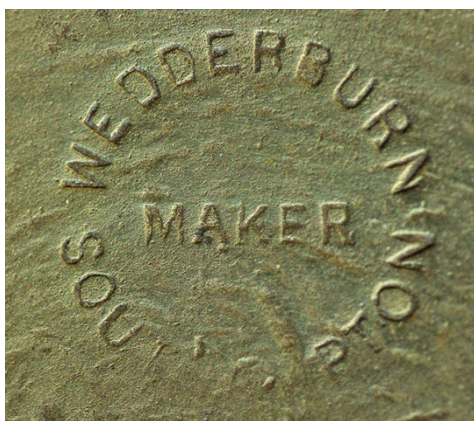
¶ Advertisement from the Eastleigh Weekly News that ran
from 24 September to 3 December, 1897.



¶ A 1 lb iron weight, by Howard. The reverse carries the GR511 (19)33 stamp,
illustrated above.

**NOTICE OF REMOVAL TO 12, BERNARD-
STREET.**
G. A. WEDDERBURN & CO.,
MANUFACTURERS OF ALL KINDS OF SCALES, WEIGHTS,
AND WEIGHING MACHINES,
12, BERNARD-STREET, SOUTHAMPTON.
And at Greenwich.
Grocers' and Oilmen's Fittings kept in stock. Scales and Weights
Adjusted by the Year or Quarter. All Kinds of Scales
Repaired. Workmen Sent to all Parts.
BUTCHERS' CUTLERY KEPT IN STOCK.

¶ Advertisement from the Hampshire Independent from September, 1881.



¶ Detail from a 1lb brass weight, illustrating the mark of Wedderburn, Southampton.

SOUTHAMPTON (continued)	
Lilley	<p>John Lilley was born in Lambeth in 1843 [1901 Census] and cited as a scale maker in Censuses from 1881 to 1911 but he was not listed as a Southampton scale maker in 1907.</p> <ul style="list-style-type: none"> • 2 Rose Villas, Adelaide Road, St Denys <1881-1901>.
Wedderburn	<p>George Arthur Wedderburn, son of Jabez Wedderburn I of Greenwich, bought Henry Wood's firm in 1881[<i>HA 23/11/81</i>]; he was listed at Greenwich in the 1881 Census.</p> <ul style="list-style-type: none"> • Cleveland House, Bridge Road 1881-85 • 12 Bernard Street 1885-1925> • 54 Bernard Street <1931-1940 (premises destroyed), • 56 Shirley Road <1946-2009>.
Martin	<p>Henry Martin, the Reading firm, had a branch in 1898 [K]</p> <ul style="list-style-type: none"> • 63 High Street <1898>.
Avery	<p>W. & T. Avery took over Howard's firm and premises in 1914.</p> <ul style="list-style-type: none"> • 114 East Street <1914-25> • 17 The Strand <1931-35> • 27 London Road <1939> • 168 Northam Road <1946-54> • 28-30 Bernard Street <1960-70>.
Pooley	<p>Pooley was listed in 1939 [KS].</p> <ul style="list-style-type: none"> • Java Road, Docks <1939-46>.
Swift & Swallow	<p>Swift & Swallow, the weighing machine makers, based in Rochester, Kent, were listed in 1954 [KS], advertising for staff between 1955 and 57.</p> <ul style="list-style-type: none"> • 156 Shirley Road <1954>.

WINCHESTER	
Watts-Harris and Allen	<p>An advertisement of Watts-Harris and Allen, scale makers, in 1905 claimed thirty years practical experience.</p> <ul style="list-style-type: none"> • 9 Andover Road 1905 • 9 & 50 Andover Road 1907 • 50 Andover Road 1908-1914 • Downs Road, South Wonsdon 1915-1926.

30 Years Practical Experience.

WATTS, HARRIS, & ALLEN

ARE THE

ONLY SCALE MAKERS

IN WINCHESTER & DISTRICT.

Scales and Weights always in stock.

REPAIRS OF EVERY DESCRIPTION.

ESTIMATES FREE.

9, ANDOVER ROAD, WINCHESTER.

¶Advertisement from the Hampshire Observer and Basingstoke News of 25 November, 1905, p. 1.

WATTS-HARRIS & ALLEN,

Trade Mark.



Scale and Cycle Makers,

50, ANDOVER ROAD,
WINCHESTER.

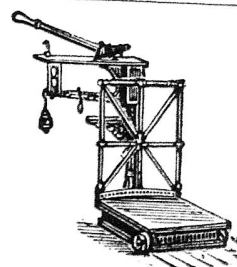
Repairs of every description.
ALL WORK GUARANTEED.

SCALES and WEIGHTS

CLEANED AND ADJUSTED.

Estimates given for Annual Contracts.

All kinds of Scales and Weights kept in Stock.



¶ Advertisement from Warren's Winchester and District Directory 1908.

References for Hampshire and the Isle of Wight

Published Works

1. Ruscombe Foster. *The Politics of County Power 1820-52*. London: Harvester Wheatsheaf 1990.
2. A. T. Patterson. *A Selection from the Southampton Corporation Journals*. Southampton Records Series, Vol X (1965). See p.47 for remarks on the Court Leet.

Directories

In addition to the usual sources, an extensive series of Southampton Directories can be found at www.plimsoll.org/Southampton/Streetdirectories.

- F. Fletcher's Directory of Southampton.... [N359-360] 1834, 1836, 1839.
- PO. Post Office Directory of Southampton [N361-367, ST516] 1843-63.
- K. Kelly's Directory of Hampshire [N113, ST505] 1847-1939.
- KMT Kelly's Manufacturing Trades
- S. Slater's Directory of Hampshire [ST34] 1852.
- G. Gilmour's Winchester Almanac [ST517] 1854.
- H. W. White's Directory of Hampshire [ST507] 1859, 1878.
- I. Harrod's Directory of Hampshire [ST508] 1865.
- C. [Cox's] ... Southampton Directory [ST520, 525] 1871, 1876, 1883.
- Wa. Warren's Winchester ..., Directory [ST523] 1877-1951.
- M. Master's Winchester Directory [ST526] 1880.
- KW. Kelly's Directory of Winchester [ST549] 1927-1974.
- KS. Kelly's Directory of Southampton [ST533] 1887-1970.

Newspapers

AC	Andover Chronicle 1876-91
AMG	Aldershot Military Gazette 1862-69
AN	Aldershot News 1910-55
BK	Berkshire Chronicle 1831-70
BDE	Bournemouth Daily Echo 1901-09
BG	Bournemouth Guardian 1893-1907
CT	Christchurch Times 1864-91
CTel	Cornish Telegraph 1892
EWN	Eastleigh Weekly News 1897
HA	Hampshire Advertiser 1824-93
HBG	Hants and Berks Gazette and Middlesex and Surrey Journal 1892
HC	Hampshire Chronicle 1826-1909
HI	Hampshire Independent 1838-91
HOBN	Hampshire Observer and Basingstoke News 1905
HT	Hampshire Telegraph 1833-89
IOWCP	Isle of Wight County Press 1896-1941
IOWO	Isle of Wight Observer 1921
PEN	Portsmouth Evening News 1880-1909
PT	Portsmouth Times and Naval Gazette 1850-71
RM	Reading Mercury 1850-1901
SE	Southern Echo 1891-1901
SWJ	Salisbury and Wiltshire Journal 1834-62

Original Documents

Hampshire Record Office

Q1/37-41: Quarter Sessions Order Books. Appointments of inspectors and transfer to the police force 1835-44.

Southampton Archives

SC/TCBox/7/33: Report by John Lisle, Inspector of Weights and Measures, for the quarter ended 9 November 1854.

SC 3/8/87a-c: Appointment of Charles Herd as Inspector of Weights and Measures, 1894.