

WATERPROOF WET WALL COLLECTION



Atlantis
Wet Wall Collection

www.atlantiswetwall.co.uk





WHY CHOOSE ATLANTIS WET WALL?

Atlantis Wet Wall is a fully waterproof shower wall, produced from high pressure laminates with a proven waterproof core.

The uniform structure of the core, the smooth surface and gluing system make Atlantis the ultimate panelling system for showers, bathrooms and wet room applications.

Atlantis Wet Wall panels are available in a range of 23 trend decors.

All panels are manufactured and stocked in the UK.

100% WATERPROOF PANELS, GUARANTEED

Atlantis Wet Wall panels are guaranteed to be free from defects for 20 years, from date of purchase if correctly fitted, thoroughly sealed & maintained.

(See pages 30 & 31 for fitting instructions)

Atlantis Wet Wall panels comply with British Standard Fire Rated Class 2.



Visit our website
www.atlantiswetwall.co.uk
for further information



Easy to keep
clean



Quick and easy
install



Fully
waterproof



Grout free
installation



Can be installed
over tiles



PANEL STYLES

Style and design are key to creating the bathroom of your dreams. Atlantis wet wall panels offer a modern alternative to tiles that are stylish and on trend, as well as providing more practical benefits.

	Atlantis Wall Panels	Traditional Tiles
Fully waterproof	✓	✓
No grout required	✓	x
Resistant to mould	✓	x
Quick and easy installation	✓	x
20 year warranty	✓	x
Made from sustainable materials	✓	?
Made in the UK	✓	?



20 YEAR WARRANTY

Atlantis 20 year warranty* covers the unlikely failure of the product, and will be invalid if any published installation and care guidelines are deemed not to have been followed.

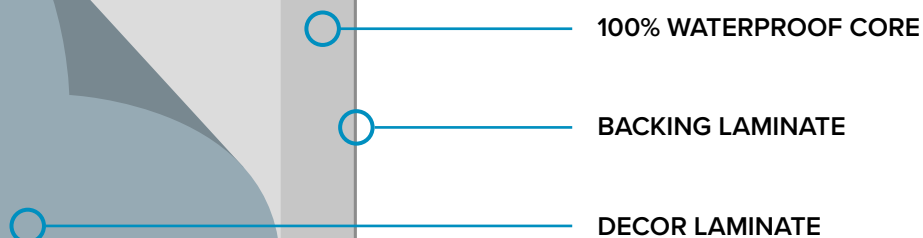
Installation guidelines and full details on each product warranty can be found via our website www.atlantiswetwall.co.uk

* Applies to all Atlantis Wet Wall Panels. Full warranty details for all products are available at atlantiswetwall.co.uk



MADE IN BRITAIN

Atlantis wall panels are manufactured in our purpose built facility. This helps to support the local economy and minimise our impact on the environment.



NEW

ITALIAN MARBLE

Smooth

Specification

2400 x 1200 x 11mm

24kg



Square Edged

or

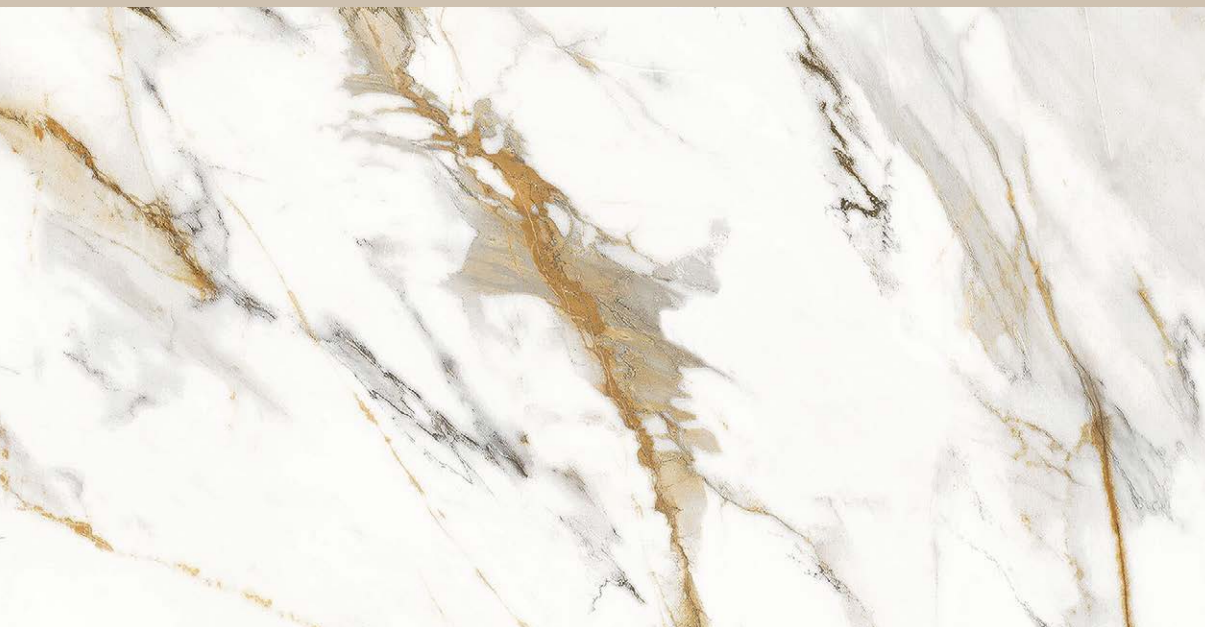


Tongue & Groove Edged

Wall Panel Trim

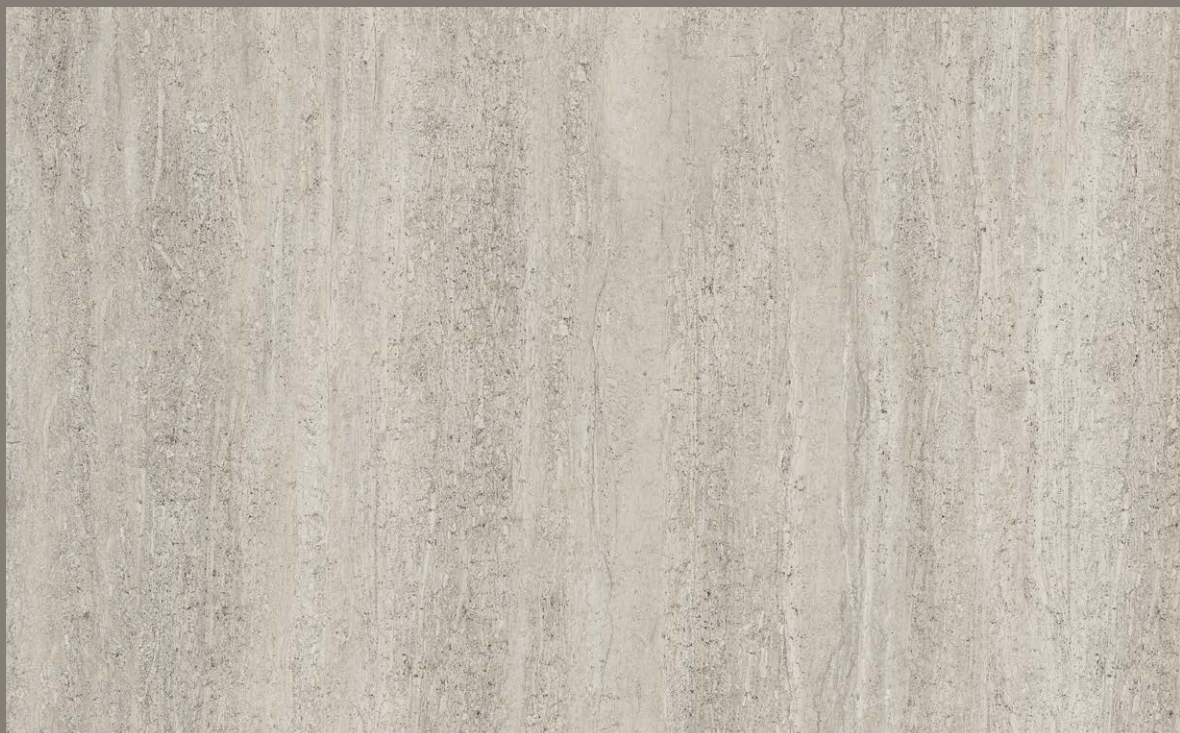
Complete your wall panel with appropriate trims, available in 5 colour options

See Pages 28 & 29









TRAVERTINE

Textured

Specification

2400 x 1200 x 11mm

24kg



Square Edged

or



Tongue & Groove Edged

Wall Panel Trim

Complete your wall panel with appropriate trims, available in 5 colour options

See Pages 28 & 29



LIGHT PEARL

Smooth

Specification

2400 x 1200 x 11mm

24kg



Square Edged

or



Tongue & Groove Edged

Wall Panel Trim

Complete your wall panel with appropriate trims, available in 5 colour options

See Pages 28 & 29









RIVIERA

Textured

Specification

2400 x 1200 x 11mm

24kg



Square Edged

or

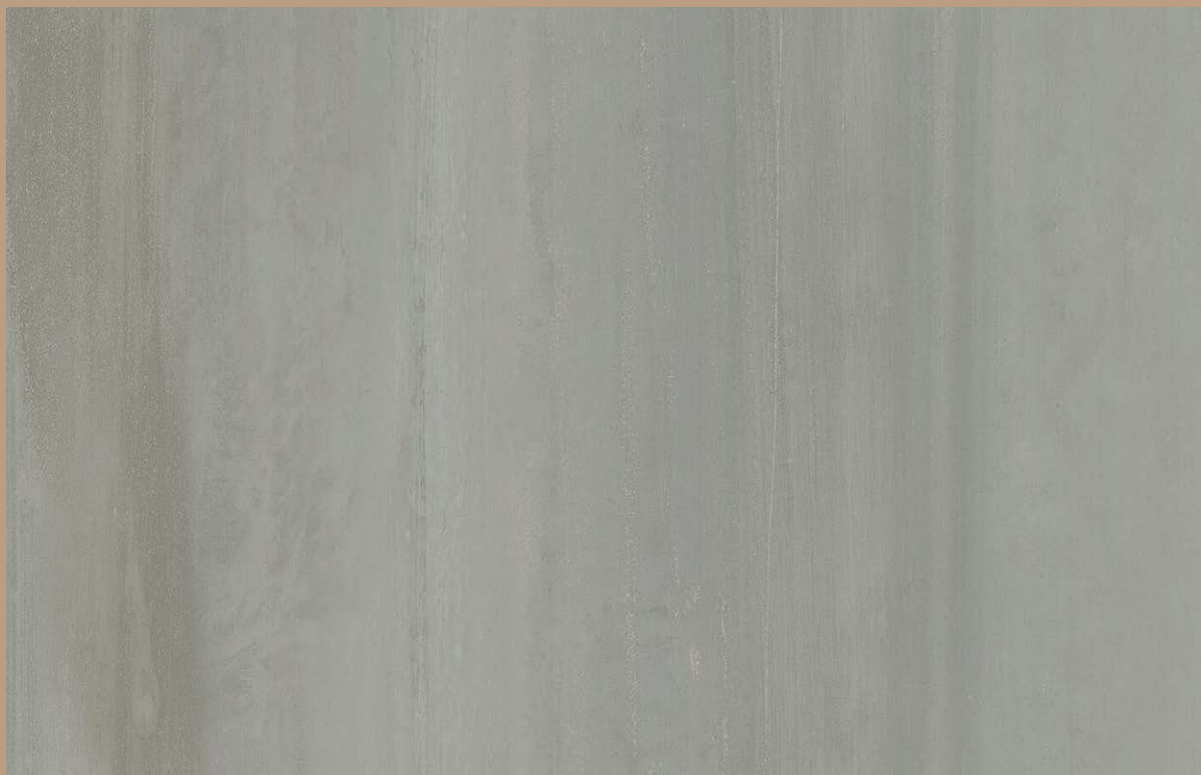


Tongue & Groove Edged

Wall Panel Trim

Complete your wall panel with appropriate trims, available in 5 colour options

See Pages 28 & 29







NEW

TITAN

Textured

Specification

2400 x 1200 x 11mm

24kg



Square Edged

or



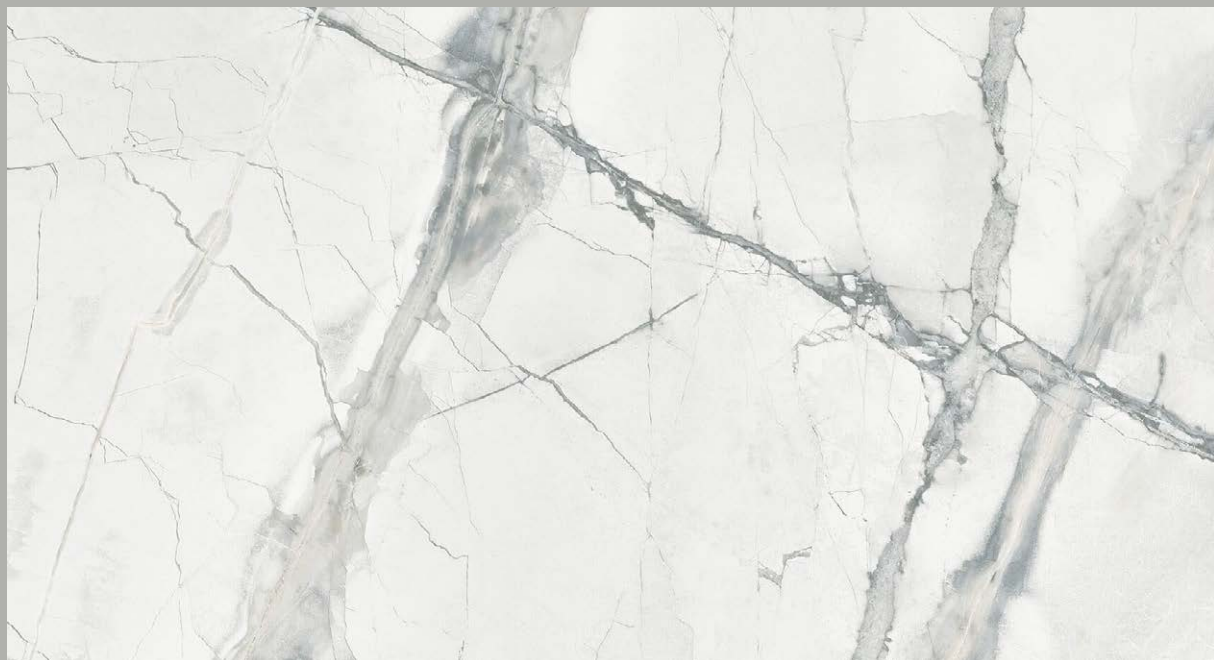
Tongue & Groove Edged

Wall Panel Trim

Complete your wall panel with appropriate trims, available in 5 colour options

See Pages 28 & 29





NEW

GLACIER STONE

Smooth

Specification

2400 x 1200 x 11mm

24kg



Square Edged

or



Tongue & Groove Edged

Wall Panel Trim

Complete your wall panel with appropriate trims, available in 5 colour options

See Page 28 & 29

NEW

CAPTIVA GRANITE

Textured

Specification

2400 x 1200 x 11mm

24kg



Square Edged

or



Tongue & Groove Edged

Wall Panel Trim

Complete your wall panel with appropriate trims, available in 5 colour options

See Pages 28 & 29



ATLANTIS THE PERFECT CHOICE FOR GYMS, SCHOOLS,
CARAVAN PARKS AND COMMUNAL BATHROOMS



STONE TERRAZZO

Textured

Specification

2400 x 1200 x 11mm

24kg



Square Edged

or



Tongue & Groove Edged

Wall Panel Trim

Complete your wall panel with appropriate trims, available in 5 colour options

See Pages 28 & 29



Decor Stone Terrazzo See Page 26





BLANCO

MARBLE

Decor Bianco Marble [See Page 27](#)

Gloss

Specification

2400 x 1200 x 11mm

24kg



Square Edged



or

Tongue & Groove Edged

Wall Panel Trim

Complete your wall panel with appropriate trims, available in 5 colour options

[See Pages 28 & 29](#)







GOLD CALACATTA

Smooth

Specification

2400 x 1200 x 11mm

24kg



Square Edged

or



Tongue & Groove Edged

Wall Panel Trim

Complete your wall panel with appropriate trims, available in 5 colour options

See Pages 28 & 29



MALTESE & URBAN CONCRETE

Textured & Smooth

Specification

2400 x 1200 x 11mm

24kg



Square Edged

or



Tongue & Groove Edged

Wall Panel Trim

Complete your wall panel with appropriate trims, available in 5 colour options

See Pages 28 & 29







Specification

2400 x 1200 x 11mm

24kg



Square Edged

or



Tongue & Groove Edged

Wall Panel Trim

Complete your wall panel with appropriate trims, available in 5 colour options

See Page 28 & 29





WARM SLATE

Gloss

DECORS

Size: 2400 x 1200 x 11mm

Weight: 24kg

All Atlantis Wet Wall Panels are available either square edged or tongue and groove edged.

Please specify edging upon ordering.

TEXTURED



Titan

NEW



Travertine

NEW



Captiva Granite

NEW



Riviera

NEW



Stone Terrazzo



Castle Stone



Silver Stone




Maltese



Aurina



Arctic Stone

 All images are for illustration purposes only. Appearances may vary.



SMOOTH



Glacier Stone

NEW



Italian Marble

NEW

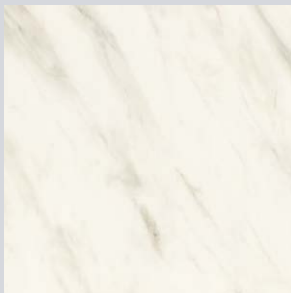


Light Pearl

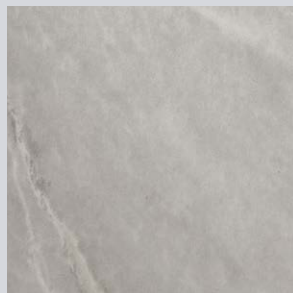
NEW



White Shimmer



Gold Calacatta



Morning Mist



Calacatta



Urban Concrete

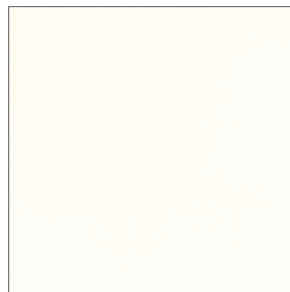
GLOSS



Black Marble



Blanco Marble



Snow Gloss



White Sparkle



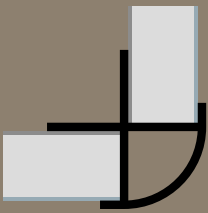
Warm Slate

ACCESSORIES

TRIM OPTIONS

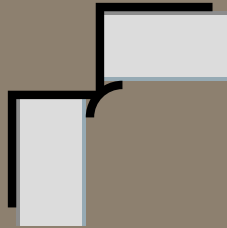
All vertical trims are 2.44m long with 11mm depth. These will finish off your edges or join panels at corners.

Making sure the appropriate trims are selected for the specific task will contribute to a professional looking finish and durability of the installation.



External

Used on all external 90° corners



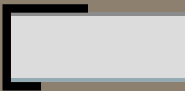
Internal

Used on all internal 90° corners



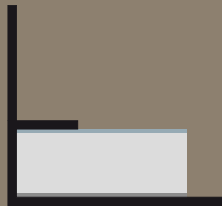
Continuous

Used to mount panels side by side



End Cap

Finishing end trims for square cut edge panels

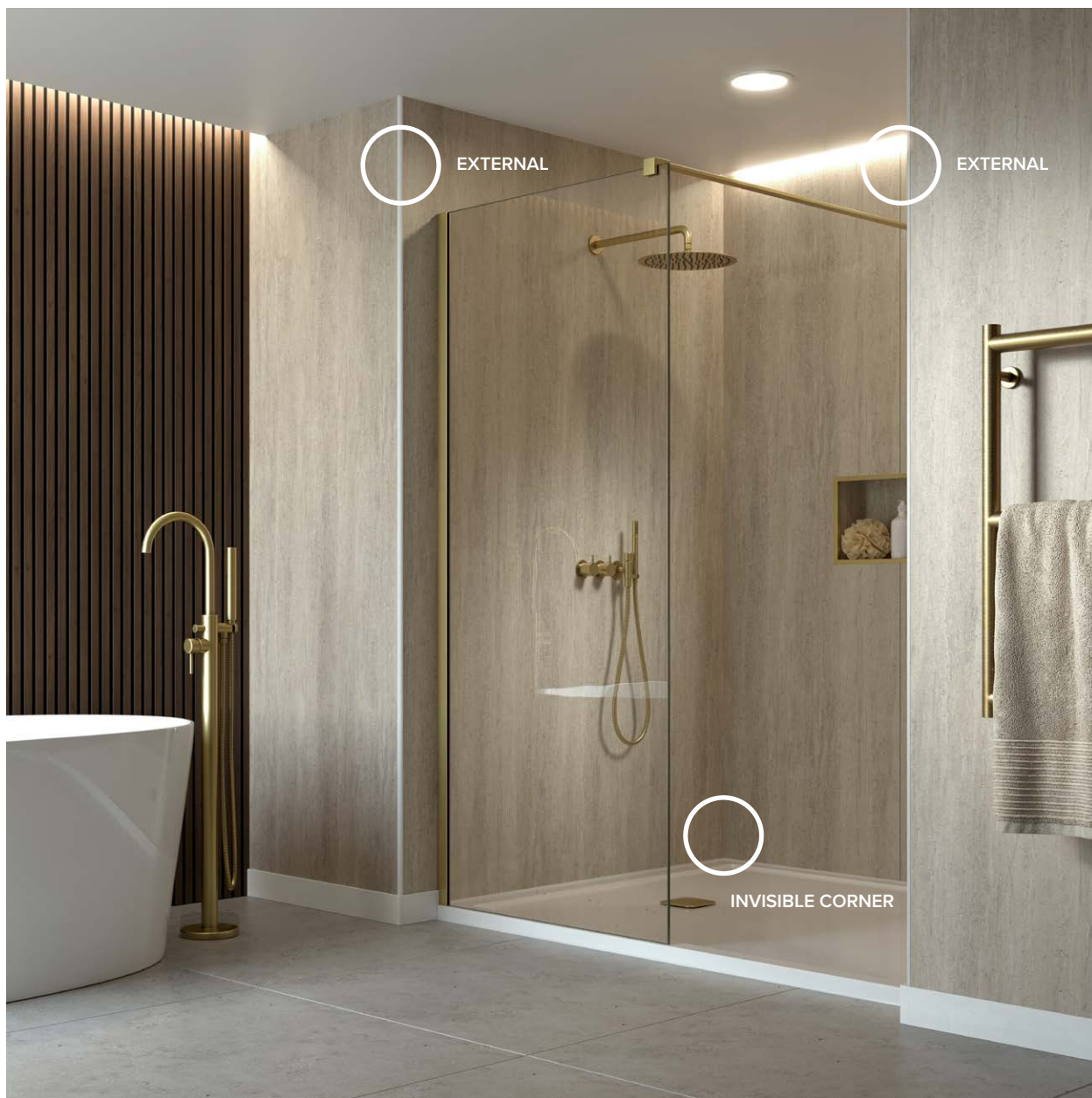


Invisible Corner Satin

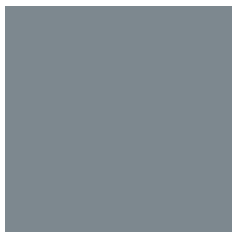
Used on all internal 90° corners

 These images are for illustration purposes only. Appearances may vary.





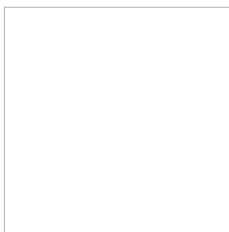
TRIM COLOUR OPTIONS



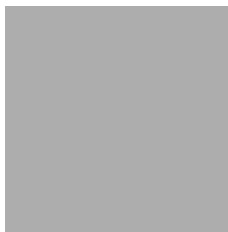
Grey



Chrome



White



Satin



Black

SPECIFICATIONS

High Pressure Laminate (HPL) bonds to a core using a PUR adhesive, ensuring a completely waterproof surface meeting the EN438 requirements. A balancing laminate is then bonded to the reverse of the panel, ensuring all Atlantis panels will remain structurally stable, watertight and waterproof.

All Atlantis wet wall panels are available in either square edged or tongue and groove edged. Please specify upon ordering.

Dimensions

Size: 2400 x 1200 x 11 mm

Weight: 24kg

STORAGE & PREPARATION

Atlantis wet wall panels should always be stored flat and horizontal to prevent bowing and should not be stored outside or in wet or humid conditions. Store with the decorative surfaces facing one another. Acclimatise at normal room temperature for at least 24 hours prior to installation.

Atlantis wet wall panels may be fitted directly to a plastered walls, plasterboard, concrete, chipboard or

a tiled wall by the use of appropriate adhesives and waterproofing sealants. Alternatively, panels may be mounted on wall battens. Trims are available both for decorative effect and to provide a seal to panel cut edges.

In preparation for installation of the panels please obtain all necessary trims and adhesive/sealants.

COMMERCIAL & DOMESTIC USE

Atlantis Shower Panels can be successfully installed in all of the following locations:

- Bathrooms
- Wet Rooms
- Changing Rooms
- Gymnasiums & Health Clubs
- Fast Food Restaurants
- Retail Areas
- Hospitals & Health Centers
- Kitchens
- Pubs & Bars
- Reception Areas

CARE & MAINTENANCE

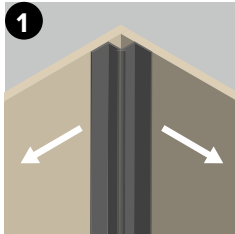
Wipe clean with a non-abrasive damp cloth and a mild spray detergent. Abrasive cleaners and bleaches **must not** be used on Atlantis panelling.

Sealant needs to be replaced at regular intervals. Failure to do this may cause water ingress and subsequent panel damage.

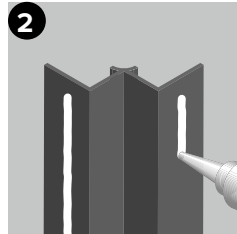


INSTALLATION

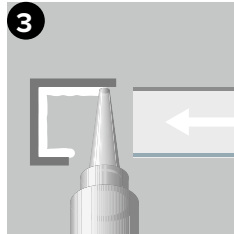
For adhesive please apply one 310ml cartridge of wall panel adhesive per panel, in a dot and dab pattern.



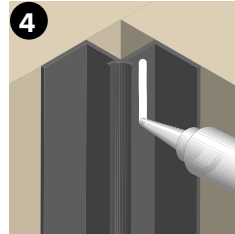
We recommend that you begin with an internal corner and work outwards.



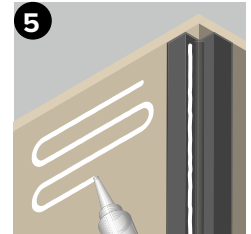
Apply a continuous bead of sealant to the reverse of the internal trim and fix in position. Use a spirit level to ensure it is plumb.



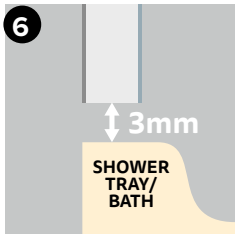
Apply a continuous bead of sealant into an end cap trim. Fix the trim to the edge of the panel. There should be enough sealant that it spreads outside the trim. Wipe off excess sealant. This same procedure should be followed when continuous trims are used to connect boards.



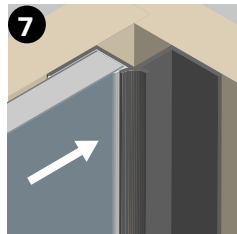
Apply a continuous bead of sealant into one recess of the internal trim. There should be enough sealant that it spreads outside the trim. Wipe off excess sealant.



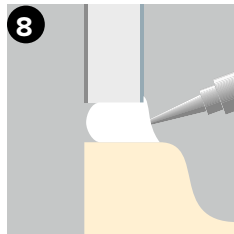
Apply sealant to the wall in a series of waves from top to bottom of the area where the panel will be affixed.



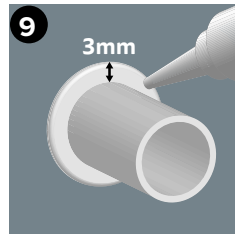
Place 3mm high spacers along the back edge of the shower tray to create a 3mm clear gap at the panel base to be filled with sealant.



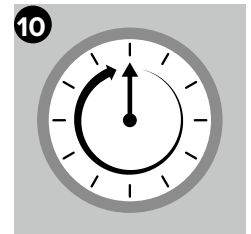
Position the panel above the 3mm spacers and slide into the internal trim recess. The sealant should envelope the panel. Wipe away excess sealant. **Repeat steps 3 to 7 for the second panel.**



Apply sealant to the bottom joint of the panels and seal all end cap edges.



Cut-outs for shower heads and the like require an expansion gap of at least 3 mm. After fitting the boards these gaps must be filled with sealant.



Leave for 24 hours before use.



INSTALLATION TIPS

- ✓ Panels should be installed on the top of shower trays or baths using an Atlantis seal kit.
- ✓ Match your trim colour to your shower enclosure and shower fittings
- ✓ Seal your installation using our clear sealant
- ✓ All our panels are 2400mm x 1200mm x 11mm and weigh 24Kg
- ✓ Panel cut offs can be used behind sinks for a coordinated look. Just ensure you seal all exposed edges with trims and silicone.



For full installation instructions please refer to our website



Visit our website
www.atlantiswetwall.co.uk
for further information

Atlantis
Wet Wall Collection

www.atlantiswetwall.co.uk