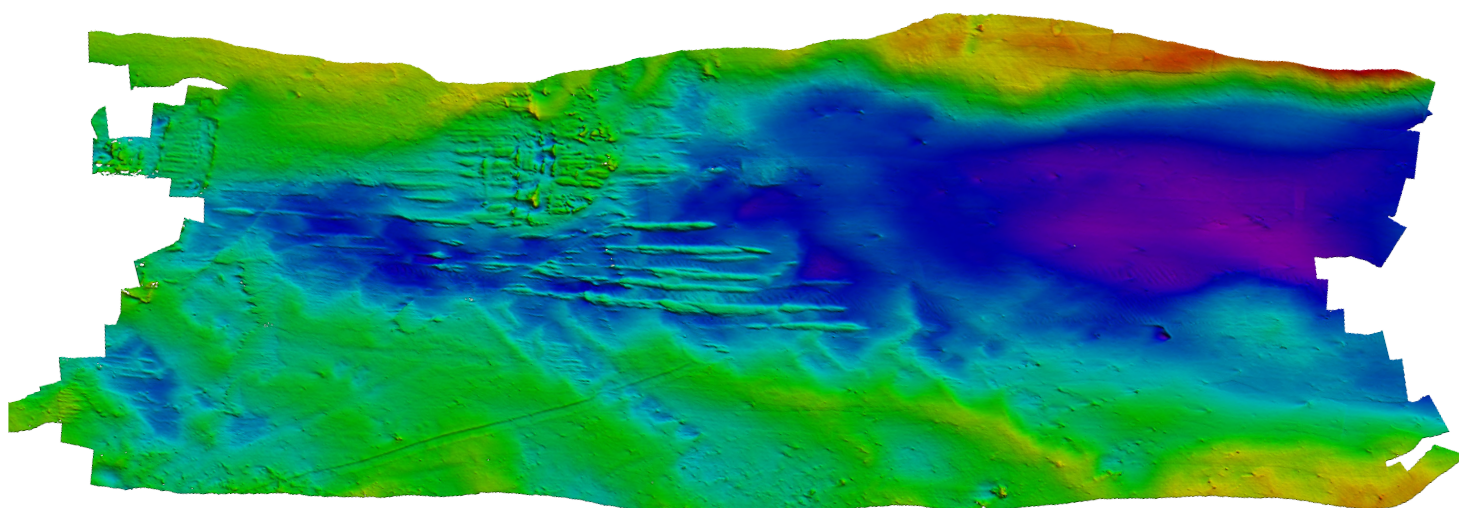


Entry-level, shallow water, GNSS/IMU integrated multibeam system

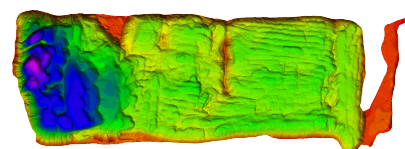


Specifications:

Swath coverage	Up to 130 degrees
Number of RX beams	512
TX beam width along-track	1.45°
RX beam width	1° ±0.1
Range	>200m
Range accuracy	<10mm
Beam distribution	Equi-Distant and equi-angular beam distribution
Roll stabilisation	Yes
Pressure rating	60m
GNSS/INS	INS in Sonar
Position	HOR: ±(8mm +1ppm X Distance from RTK Station) VER: ±(15mm +1ppm X Distance from RTK Station) (Assumes 1m GNSS Separation)
Heading Accuracy	0.08° (RTK) with 2m Antenna Separation
Pitch/Roll Accuracy	0.03° Independent of Antenna Separation
Heave Accuracy	2cm or 2% (TRUEHEAVE™). 5cm or 5% (Real Time)
Ping Rate	50 Hz
Outputs	Bathymetry, Side Scan
Compatible with	Qinsy, Hypack, BeamworX, SonarWiz a.o
Weight w. bracket	Air: 3.5 kg, Water: 1.2 kg

Features

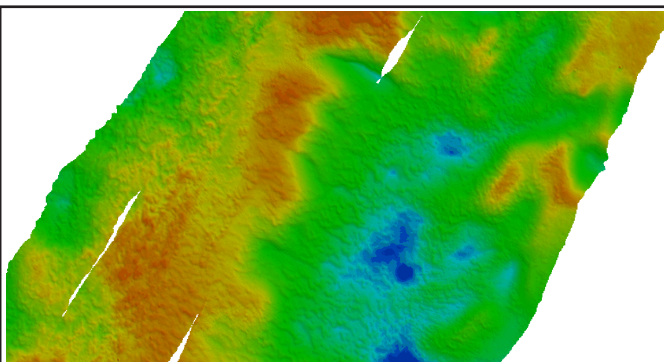
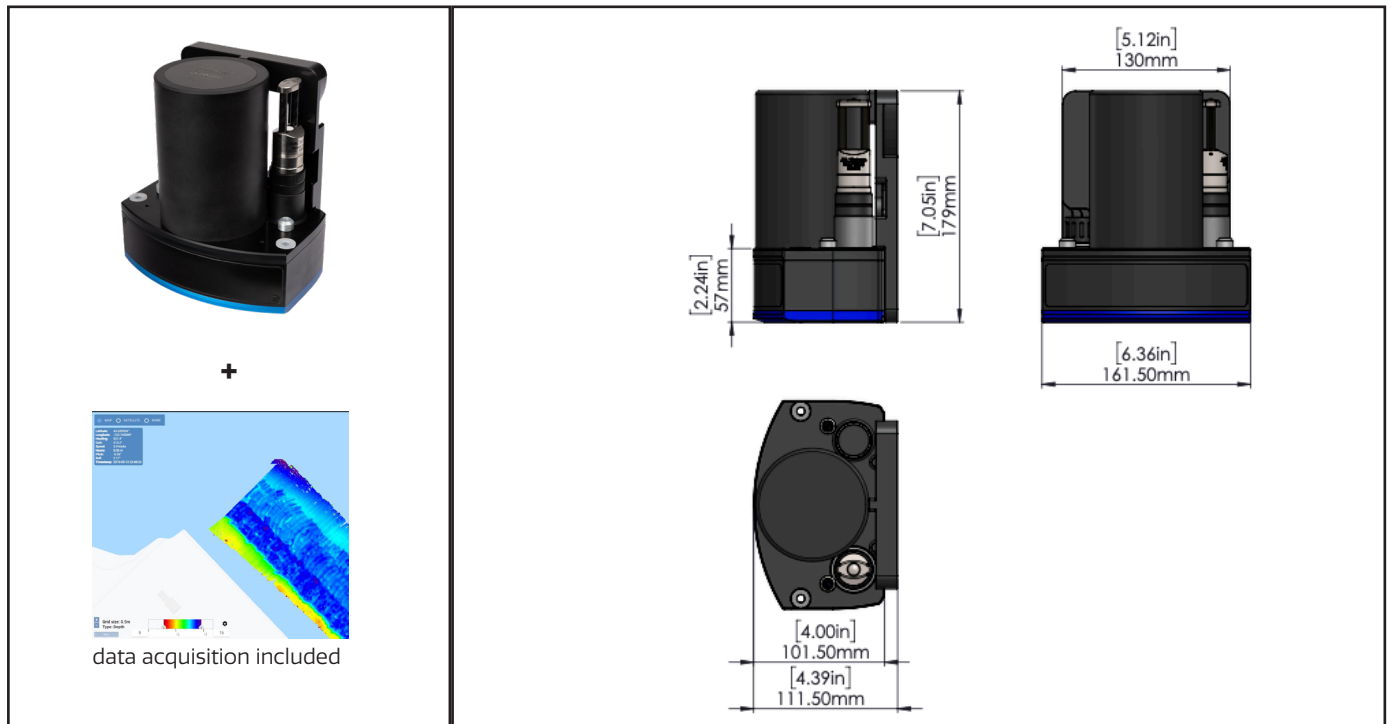
- ✓ M7 is a high-resolution multibeam echo sounder system.
- ✓ Extremely simple to use and to install on Maritime Vehicles.
- ✓ Tightly coupled GNSS/INS makes it easy to integrate even on ultra-small vehicles and very quick to mobilize.
- ✓ Angular resolution: 1.0° x 1.4°
- ✓ Range resolution: 10mm
- ✓ User exchangeable SV probe in the sonar head.
- ✓ The major components, including sonar electronics, GNSS, IMU, and SV probe, are sourced from industry-leading manufacturers.



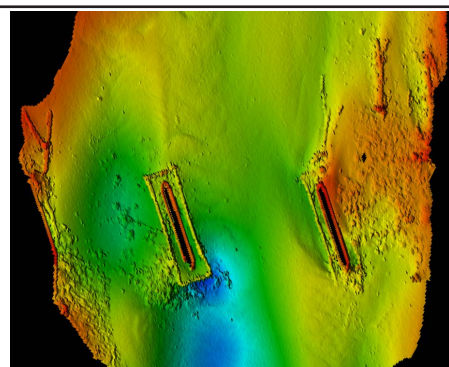
M7 Integrated Multibeam Sonar



Entry-level, shallow water, GNSS/IMU integrated multibeam system



Data processed in CARIS



Data Processed in HYPACK