



Delivering population health goals through social value

Introduction

In its simplest terms, social value is the positive impact that an organisation has on the planet, economy and society.

Social value is intrinsically linked to improving population health and supporting equity. Social value advocates for looking much more broadly at the wider determinants of health and considering how system partners can work together to achieve more for their communities. Using population health data to inform priorities, system-wide collaboration gives health, public and voluntary sector organisations an important opportunity to develop a coordinated, strategic approach to delivering social value.

The Social Value Network

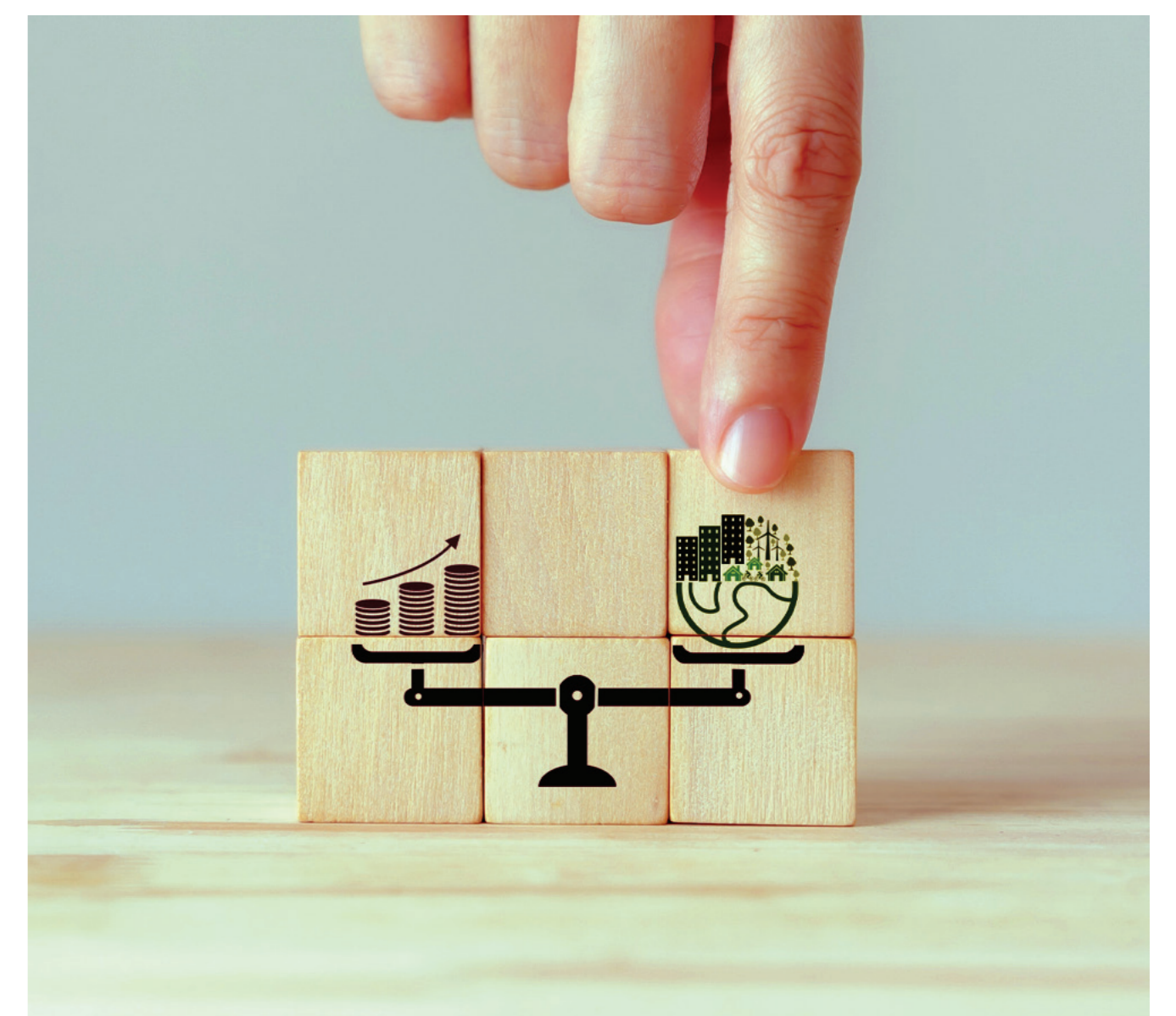
NHS Arden & GEM established the Social Value Network to help health systems and organisations in creating positive value for the communities they serve.

The aim is to support members to deliver a collaborative, joined up approach to social value across the public sector though sharing information, innovation and resources.

Collaboration in practice






Some examples of our collaborative work include:

- In Cheshire and Merseyside, the ICS developed a Social Value Charter which defines what social value means to them, using a co-production approach that enabled system partners, voluntary organisations, the private sector and citizens to contribute. The Charter sets out the principles and approach signatories sign up to, including paying a real living wage and achieving carbon net zero.
- In Coventry and Warwickshire ICS, the ICB is taking a system-wide approach to tackling health inequalities, drawing on partners' roles as anchor institutions to deliver social value across the region. The system is establishing a charter that will align to the its long term planning process and aims to act as an overarching framework. The charter enables each partner organisation to do what it needs to do to meet its own requirements while still contributing to a wider strategy to deliver a more proactive and sustainable health and care service.



Positive outcomes

Having a clear system-wide vision for social value and overarching framework in place is enabling ICSs to:

-  increase employment opportunities
-  stimulate local economies
-  reduce environmental impact
-  address inequalities
-  improve the wider determinants of health.

Becky Jones

Social Value Specialist at NHS Arden & GEM
becky.jones23@nhs.net

More information

www.ardengemcsu.nhs.uk/socialvalue
www.socialvaluenetwork.org

