



# Light-Load II™

## Shellplate Illuminator

Item #: T1731

### Primary Features

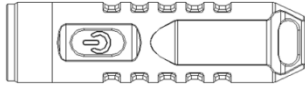
- Ultra-compact size is easy to carry for various applications
- Electronic side switch for easy one-hand operation
- High CRI (90+, Nichia), max 550 lumens (CREE)
- Powered by 130mAh Li-polymer rechargeable battery
- Built-in Micro USB charging port with indicator
- Quick charge in 45 minutes
- Low battery indicator
- Temperature controller to protect the core components and the user
- Clip slots designed into body and a two-way clip included
- IP65 weather resistance

### Dimensions

Length: 53.9mm

Diameter: 14.5mm

Weight: 11.8g



Accessories: Lanyard, Bead Chain, Stainless Steel Clip, USB Cable, Neoprene Toolhead Adapter Bushing and User Manual.

### Battery specifications

Polymer Li-ion battery	Dimensions	Standard voltage	Capacity
Rechargeable	501030	4.2 V	130 mAh

### Product Parameters

LED: CREE: XP-G3 S5 6500K

Mode Specification	Ultra-Low	Low †	Med	High	Strobe
	2 Lm	22 Lm	230 Lm	550 Lm	550 Lm
	7-8 Hours	150 Minutes	55 Minutes	38 Minutes	/
	980 cd				
	80m				
	1.5m				
	IP65 water resistance				

Notes:

† The Low brightness mode is recommended for reloading.

Times are based on maintaining the rated light output. Usabel light levels can be expected for longer times depending on setting.

Note: The above-mentioned parameters are approximate and may vary between flashlight and environments.

# User Manual

### User Interface

Operation/LED	Function
Momentary ON	Press and hold
Constant On	Double click
Cycle through (Click)	Low-Med-High-Strobe
Turn off	Long press for 0.5s
	Single Click after using at any mode over 60s

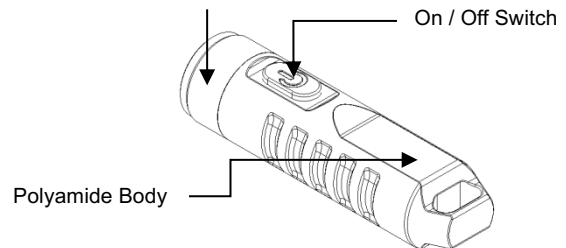
### \* Note:

1. The output will step down to 65 lumens in 2 minutes working on High mode due to the heat the high mode produces, and the output will be adjusted real time by the temperature controller.

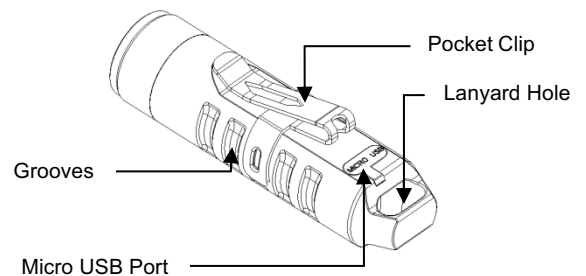
2. 3 clicks from off to access the hidden Ultra-Low mode.

### Product Illustration

Stainless Steel Bezel for LED



Front View



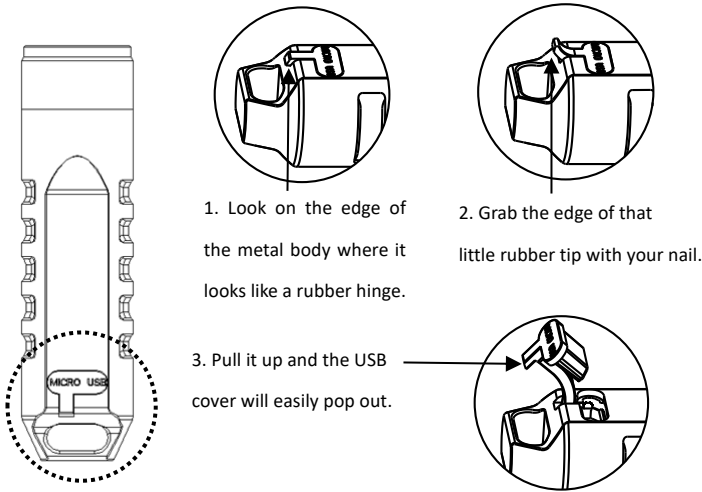
Back View

## Micro USB Charging Instructions

- Open the Micro USB cover and connect a cable to charge as shown in the diagram below
- Charging indicator: **Red** is charging, **Blue** is fully charged
- Charging time: 45 minutes (350 mA / 5V)
- When the battery voltage is lower than 2.6V, the indicator will be constantly on as a reminder to charge the light
- When the battery voltage is lower than 2.4V the light will stop working
- Do Not Over Charge. Leaving it plugged in continuously will shorten battery life.

Please fully recharge the flashlight first before you use it.

## How to open the Micro USB cover



## Battery Replacement

The battery can only be replaced by a professional technician.

## Warning!

- Do not look directly into the light when it is switched on.
- Do not point the light at human or animal eyes.
- Do not permit children to use the flashlight unsupervised.

## Warranty

- Two-year manufacturer's warranty.

## Uniquetek, Inc.

Gilbert, AZ

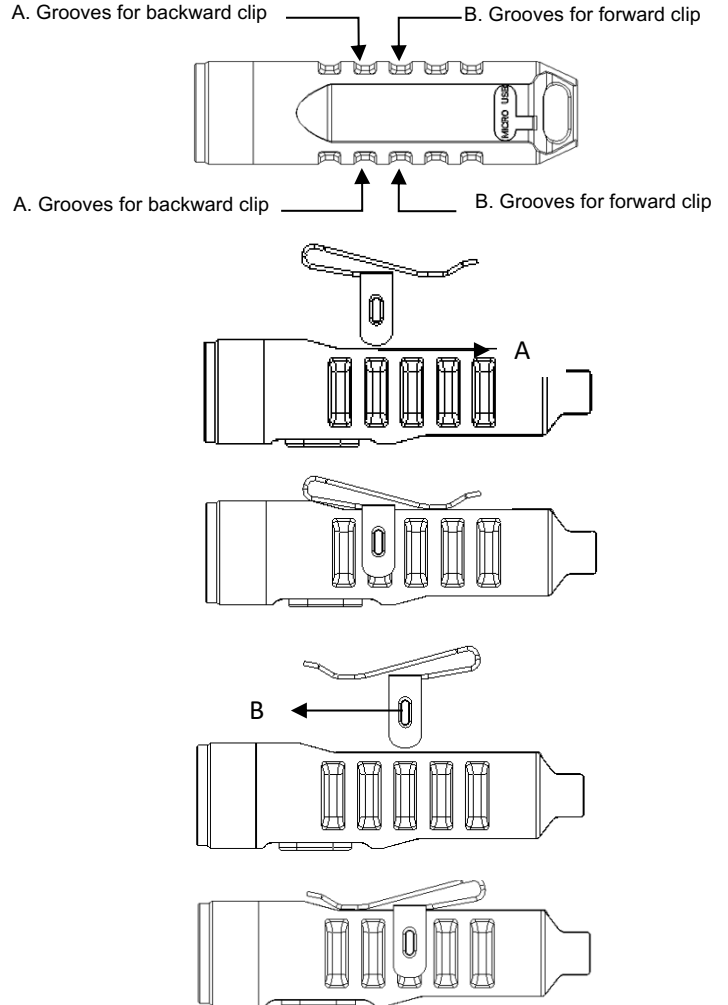
Phone: 480-507-0866

Website: [www.uniquetek.com/](http://www.uniquetek.com/)

E-mail: [info@uniquetek.com](mailto:info@uniquetek.com)

## Clip Instructions

The clip can be attached in the forward or backward position.



## Note:

1. It is recommended to clip the light at the designated grooves to avoid covering the USB port.

## Toolhead Adapter Bushing Instructions

The neoprene bushing should be installed as shown in the photo below.

The bushing supports the light when installed in Dillon 550, 650 or 750 toolheads or Hornady Lock-N-Load® AP™ die plates.

Do not install the bushing far enough to cover the switch.

The bushing is not needed if you are using the light as a keychain or pocket light.

