



FOR LEASE | 179 MCDERMOT AVE

Space2work Business Centre Modern Loft Workspace 860 SF

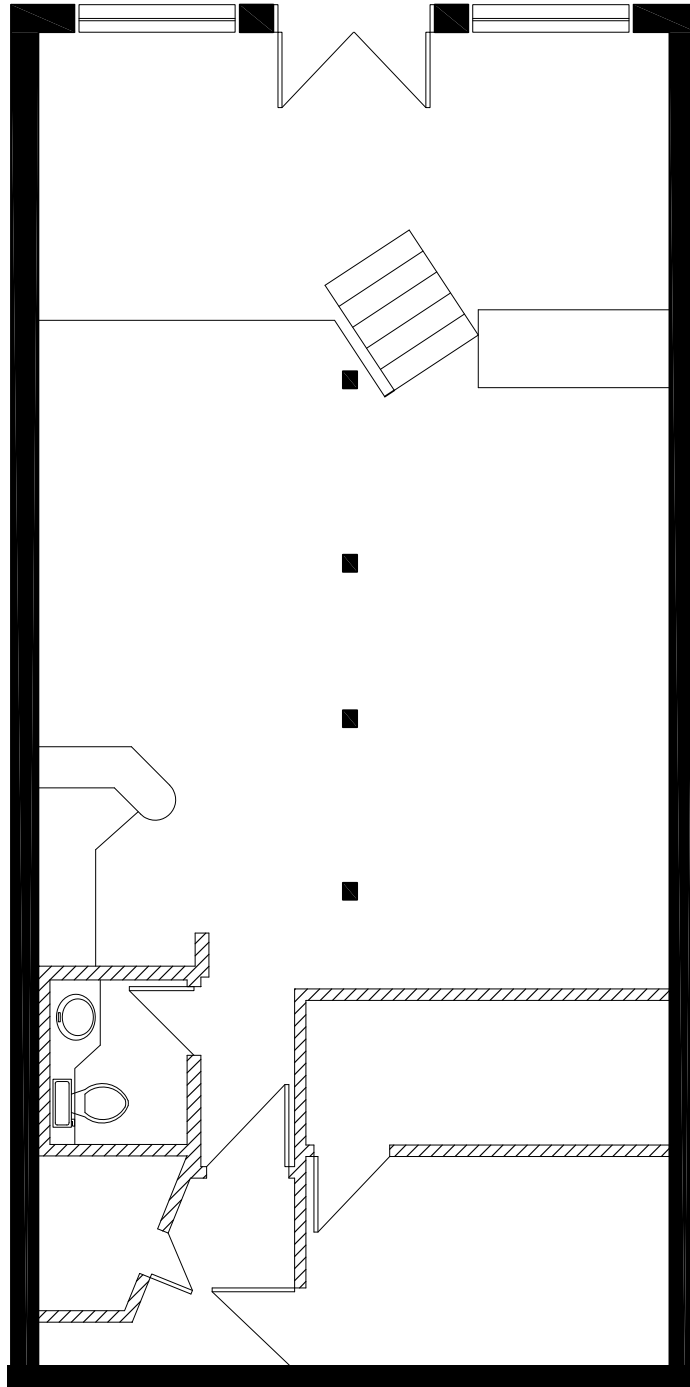
Space2work is a unique East Exchange business centre located at 179 McDermot Street. Classic heritage charm meets contemporary modern, creating an amazing workspace seldom found at 860 SF.

Whether you are branching out on your own, a small business or you are a start-up, space to work offers a full turnkey solution to your office needs. Each suite is furnished and has been designed to offer businesses a tastefully appointed premises, complete with coffee station.

All furniture, high speed internet, janitorial, supplies and access to a boardroom that comfortably seats 10-12 people are included in a business centre fee.

Floorplan

Starting at
\$13.00 PSF
Gross



The Neighbourhood

179 McDermot offers a prominent location at the bustling intersection of McDermot Ave and Rorie St, in the centre of the vibrant East Exchange District. The East Exchange District is the ideal work, live, play space that has become a magnet for software development companies, architectural firms, and financial services. The Neighbourhood has also become a sought-after enclave for new condo and rental developments, such as Waterfront Drive. Occupants of 179 McDermot will enjoy a wide variety of nearby restaurants and coffee houses, and access to convenient parking near the building.





CONTACT:

WAYNE SATO

PERSONAL REAL ESTATE CORPORATION

Sales and Leasing Executive

c. 204-510-3311

o. 204-957-0500

wayne@waynesato.ca

www.waynesato.ca



Scan QR code to
view waynesato.ca



Scan QR code to
view Space2work

This information has been obtained from sources believed to be reliable but has not been verified. NO WARRANTY OR REPRESENTATION, EXPRESS OR IMPLIED, IS MADE AS TO THE CONDITION OF THE PROPERTY (OR PROPERTIES) REFERENCED HEREIN OR AS TO THE ACCURACY OR COMPLETENESS OF THE INFORMATION CONTAINED HEREIN, AND SAME IS SUBMITTED SUBJECT TO ERRORS, OMISSIONS, CHANGE OF PRICE, RENTAL OR OTHER CONDITIONS, WITHDRAWAL WITHOUT NOTICE, AND TO ANY SPECIAL LISTING CONDITIONS IMPOSED BY THE PROPERTY OWNER(S). ANY PROJECTIONS, OPINIONS OR ESTIMATES ARE SUBJECT TO UNCERTAINTY AND DO NOT SIGNIFY CURRENT OR FUTURE PROPERTY PERFORMANCE. Wayne Sato Personal Real Estate Corporation, RE/MAX Professionals / Each office is independently owned and operated.

1601 Buffalo Pl | Winnipeg, MB | R3T 3K7 | o. 204-957-0500 | f. 204-452-4359 | wpgproperty.ca