

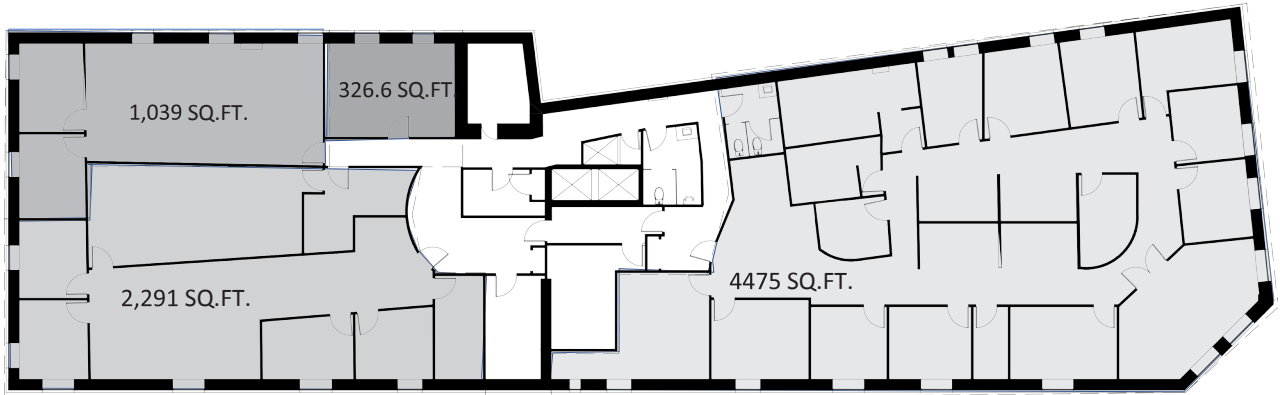


FOR LEASE | 211 BANNATYNE AVE
Up to (±) 8,132 RSF available

The 211 Bannatyne is prominently located at Bannatyne and Main—the doorway to the Exchange District. This area is undergoing a remarkable transformation. The development of the Market Lands, the new Red River Innovation Centre and numerous residential projects are drawing technology companies, software and digital media professionals.

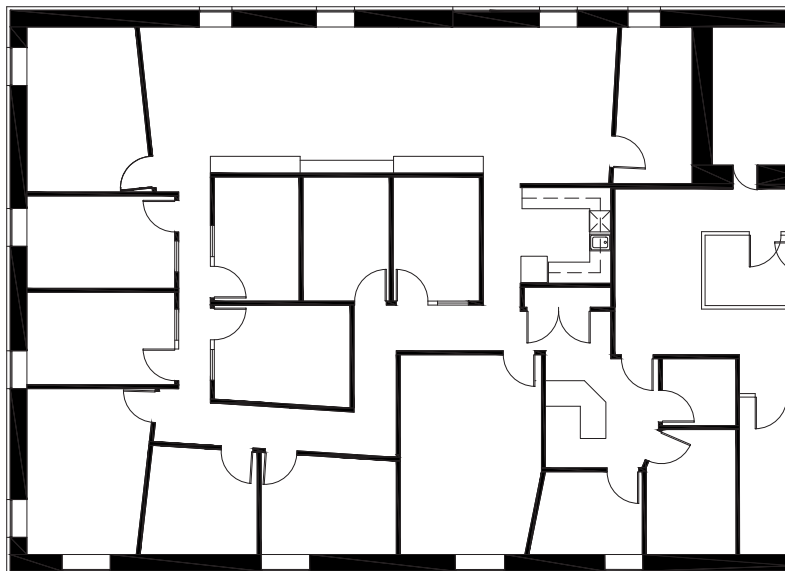
Floorplan

Starting at
\$13.50 PSF
Gross



3RD FLOOR 211 BANNATYNE
AREA 8,132 SQ.FT *

*All measurements usable square feet.



402 - 211 BANNATYNE
AREA 3696 SQ.FT

The Neighbourhood

The McKim building is one of the cornerstones of the Exchange District—home to Law firms, Winnipeg Contemporary Dancers, etc.

Premier Heritage office space featuring post and beam construction and high ceilings

3 minute walk to Winnipeg Square Concourse.





CONTACT:

WAYNE SATO

PERSONAL REAL ESTATE CORPORATION

Sales and Leasing Executive

c. 204-510-3311

o. 204-957-0500

wayne@waynesato.ca

www.waynesato.ca



Scan QR code to
view waynesato.ca

This information has been obtained from sources believed to be reliable but has not been verified. NO WARRANTY OR REPRESENTATION, EXPRESS OR IMPLIED, IS MADE AS TO THE CONDITION OF THE PROPERTY (OR PROPERTIES) REFERENCED HEREIN OR AS TO THE ACCURACY OR COMPLETENESS OF THE INFORMATION CONTAINED HEREIN, AND SAME IS SUBMITTED SUBJECT TO ERRORS, OMISSIONS, CHANGE OF PRICE, RENTAL OR OTHER CONDITIONS, WITHDRAWAL WITHOUT NOTICE, AND TO ANY SPECIAL LISTING CONDITIONS IMPOSED BY THE PROPERTY OWNER(S). ANY PROJECTIONS, OPINIONS OR ESTIMATES ARE SUBJECT TO UNCERTAINTY AND DO NOT SIGNIFY CURRENT OR FUTURE PROPERTY PERFORMANCE. Wayne Sato Personal Real Estate Corporation. RE/MAX Professionals / Each office is independently owned and operated.

1601 Buffalo Pl | Winnipeg, MB | R3T 3K7 | o. 204-957-0500 | f. 204-452-4359 | wpgproperty.ca