

Starting at
\$15.00
PSF

WAYNE SATO

WAYNE SATO PERSONAL REAL ESTATE CORPORATION

Sales and Leasing Executive

c. 204-510-3311

o. 204-957-0500

wayne@waynesato.ca

www.waynesato.ca

FOR LEASE | 300 CARLTON STREET

(±) 35,000 sq ft Available

- Available on 60 days notice
- 600V, 120, 208V available
- Two Uninterruptible Power Supply (UPS) units
- Rooftop cooling units
- Two Liebert cooling units tied into the building loop dedicated for the data room
- Data centre capability - Two 400 amp Central Distribution Panel's (CDP)
- Fibre & Telephone Service - Multiple telephone and fibre drops (MTS/Telus and possibly Shaw on site)
- 600KVA capacity generator shared with 5th floor, which uses minimal capacity
- Minimum 14 parking stalls available on site with additional stalls available on adjacent property
- Non-restricted building access during business hours and after hours via card access
- Province of Manitoba contract security on site

CAM & Tax: \$12.35 psf (2021 est.)



Scan QR code to view website

RE/MAX PROFESSIONALS

1601 Buffalo Place

Winnipeg, MB R3T 3K7

o. 204-957-0500

f. 204-452-4359

wpgproperty.ca



Property Highlights

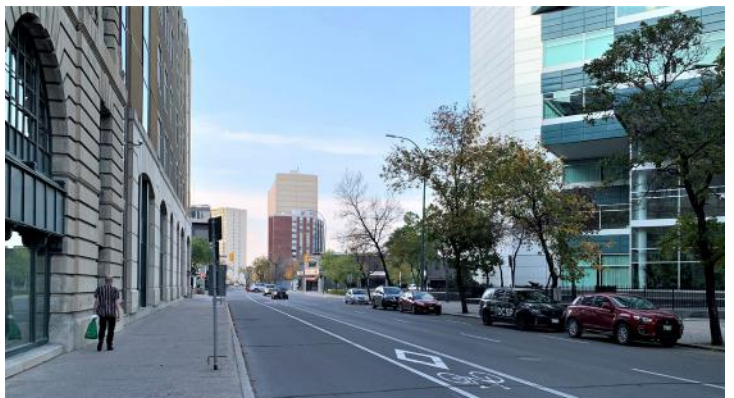
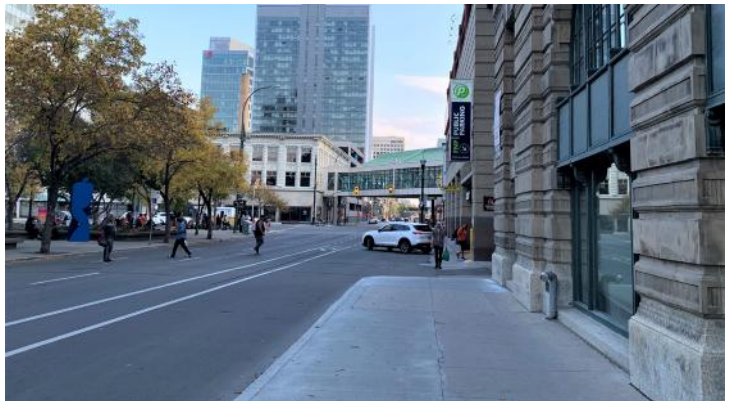


Suite/Floor #	Square Footage (±)	Lease Rate	CAM & Tax (2020 est.)	Availability Date
6th Floor	35,000	\$15.00 psf	\$12.35 psf	60 day notice
4th Floor	2,601	\$15.00 psf	\$12.35 psf	Immediately

This information has been obtained from sources believed to be reliable but has not been verified. NO WARRANTY OR REPRESENTATION, EXPRESS OR IMPLIED, IS MADE AS TO THE CONDITION OF THE PROPERTY (OR PROPERTIES) REFERENCED HEREIN OR AS TO THE ACCURACY OR COMPLETENESS OF THE INFORMATION CONTAINED HEREIN, AND SAME IS SUBMITTED SUBJECT TO ERRORS, OMISSIONS, CHANGE OF PRICE, RENTAL OR OTHER CONDITIONS, WITHDRAWAL WITHOUT NOTICE, AND TO ANY SPECIAL LISTING CONDITIONS IMPOSED BY THE PROPERTY OWNER(S). ANY PROJECTIONS, OPINIONS OR ESTIMATES ARE SUBJECT TO UNCERTAINTY AND DO NOT SIGNIFY CURRENT OR FUTURE PROPERTY PERFORMANCE. Wayne Sato Personal Real Estate Corporation, RE/MAX Professionals / Each office is independently owned and operated.

300
CARLTON
STREET

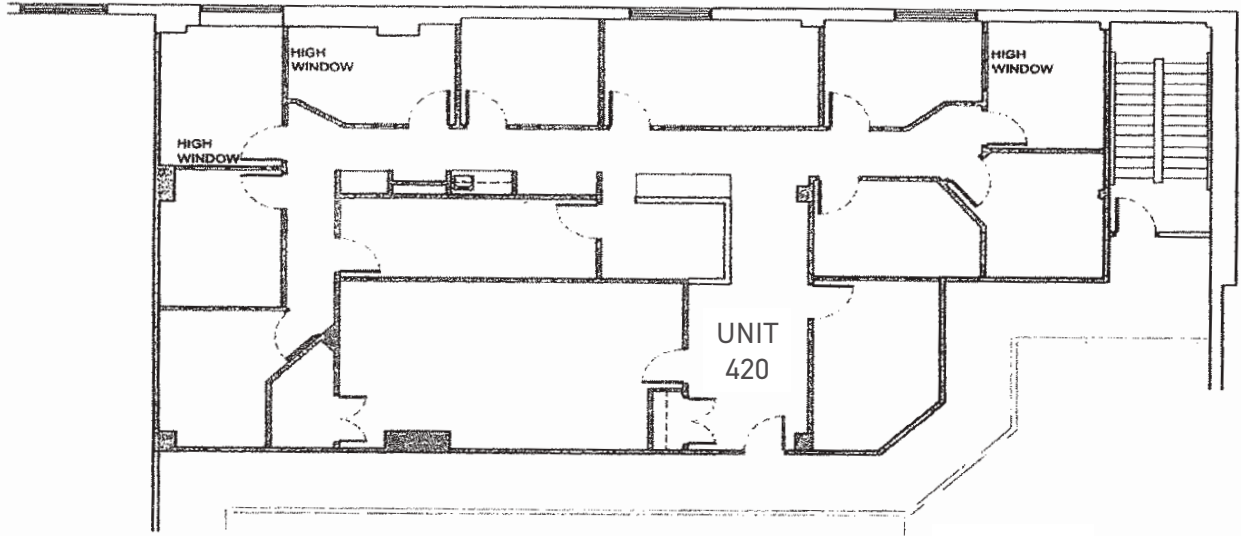
RE/MAX
COMMERCIAL[®]



6TH FLOOR PLAN



4TH FLOOR PLAN



This information has been obtained from sources believed to be reliable but has not been verified. NO WARRANTY OR REPRESENTATION, EXPRESS OR IMPLIED, IS MADE AS TO THE CONDITION OF THE PROPERTY (OR PROPERTIES) REFERENCED HEREIN OR AS TO THE ACCURACY OR COMPLETENESS OF THE INFORMATION CONTAINED HEREIN, AND SAME IS SUBMITTED SUBJECT TO ERRORS, OMISSIONS, CHANGE OF PRICE, RENTAL OR OTHER CONDITIONS, WITHDRAWAL WITHOUT NOTICE, AND TO ANY SPECIAL LISTING CONDITIONS IMPOSED BY THE PROPERTY OWNER(S). ANY PROJECTIONS, OPINIONS OR ESTIMATES ARE SUBJECT TO UNCERTAINTY AND DO NOT SIGNIFY CURRENT OR FUTURE PROPERTY PERFORMANCE. RE/MAX Professionals / Each office is independently owned and operated.

The Area



Convenient location



Food and Drink within Walking



Groceries and Shopping



Amenities within walking



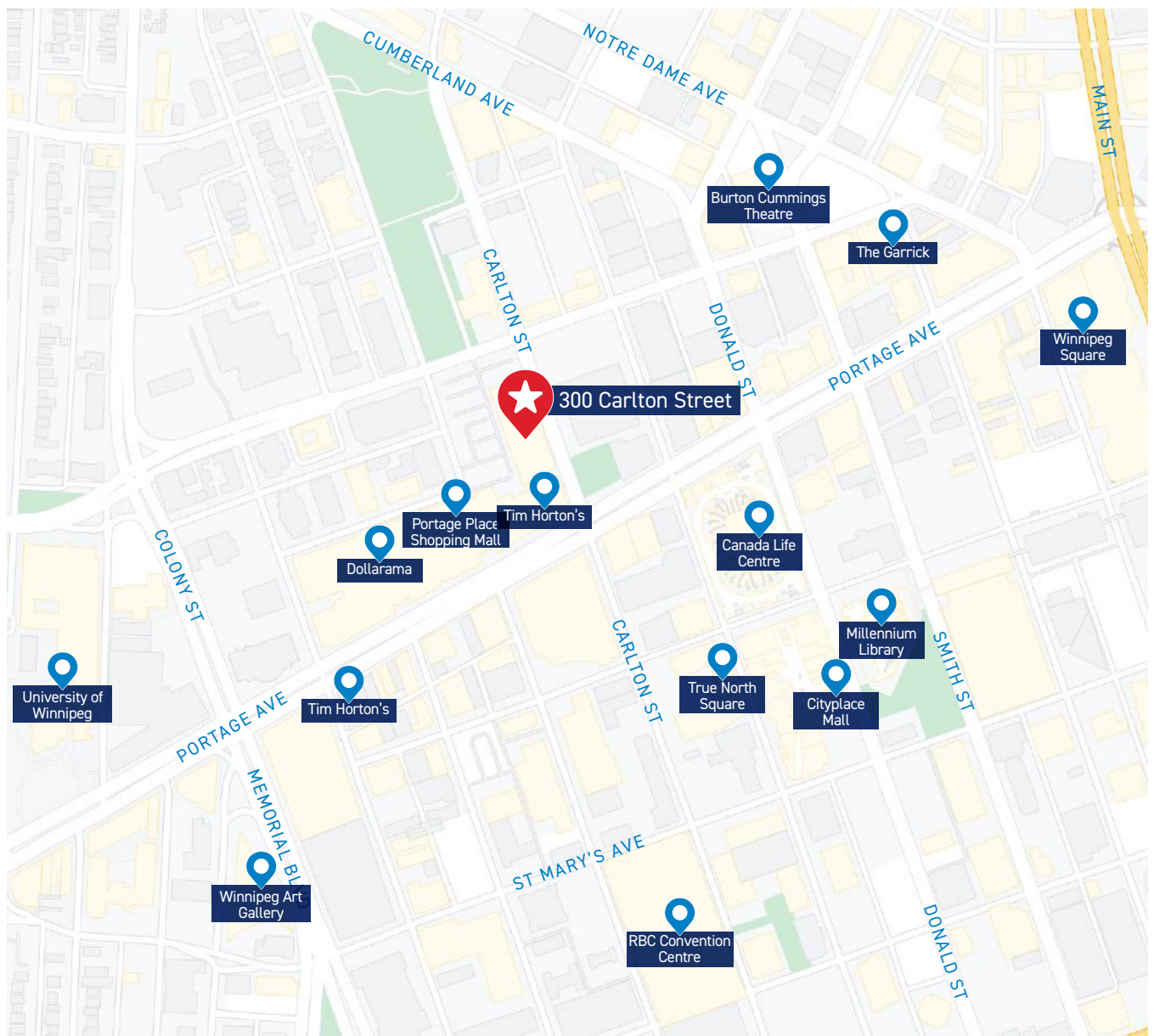
Convenient bike infrastructure



Excellent transit stops

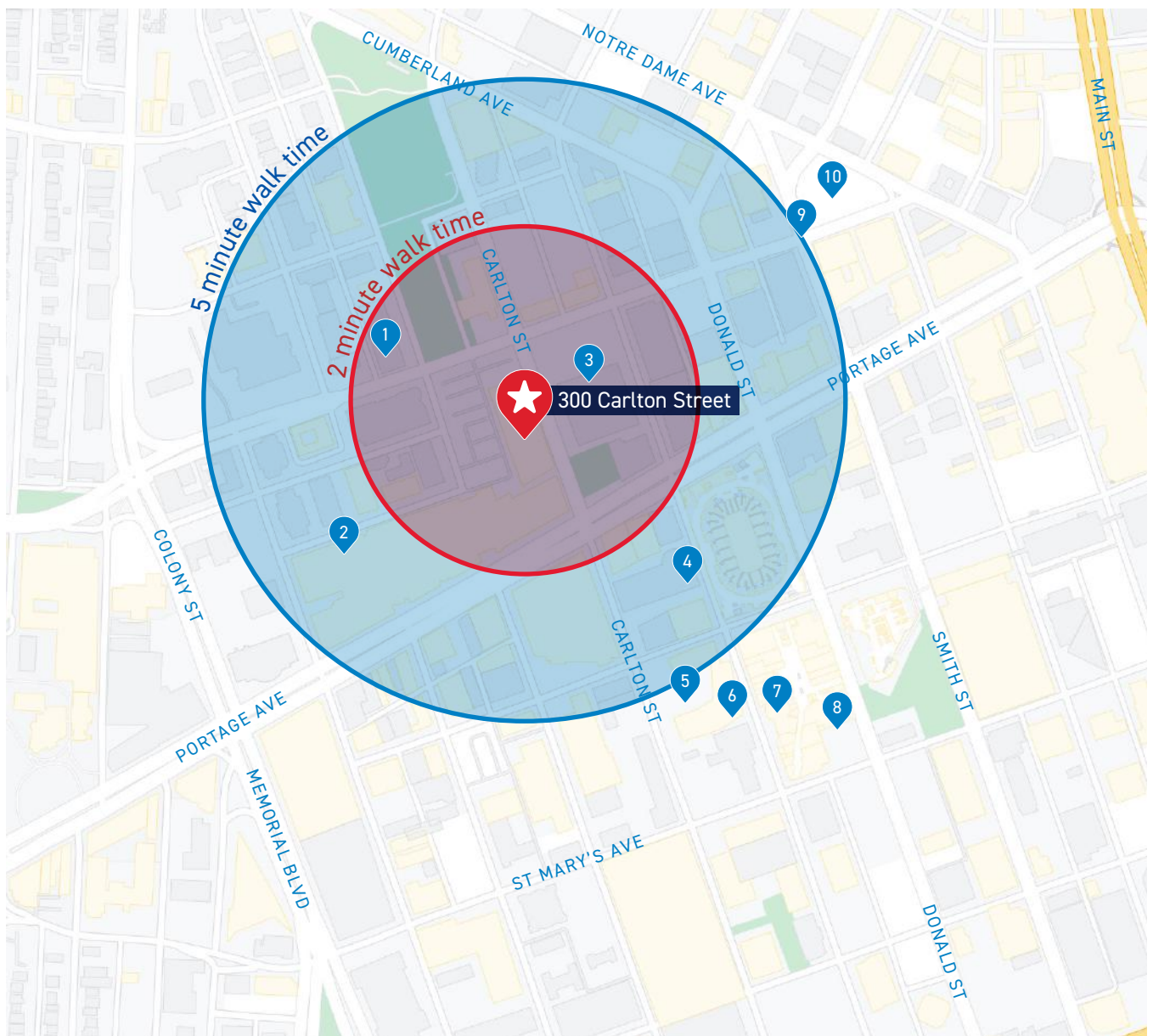


Culture & Entertainment within walking



Walk Time & Parking Map

- | | | |
|-----------------------------|-----------------------------|---|
| 1 Impark Parking | 5 Indigo Parking | 9 Lot #367, 351 Smith St Lot |
| 2 FNP Parking | 6 Precise ParkLink | 10 W040, Indigo Parking, 241 Notre Dame |
| 3 W029, Centrepoint Parkade | 7 Lot #309, Cityplace Lot 4 | |
| 4 Lot #306, Cityplace Lot 1 | 8 Cityplace Lot 3 | |





CONTACT:

WAYNE SATO

WAYNE SATO PERSONAL REAL ESTATE CORPORATION

Sales and Leasing Executive

c. 204-510-3311

o. 204-957-0500

wayne@waynesato.ca

www.waynesato.ca



Scan QR code
to view website

This information has been obtained from sources believed to be reliable but has not been verified. NO WARRANTY OR REPRESENTATION, EXPRESS OR IMPLIED, IS MADE AS TO THE CONDITION OF THE PROPERTY (OR PROPERTIES) REFERENCED HEREIN OR AS TO THE ACCURACY OR COMPLETENESS OF THE INFORMATION CONTAINED HEREIN, AND SAME IS SUBMITTED SUBJECT TO ERRORS, OMISSIONS, CHANGE OF PRICE, RENTAL OR OTHER CONDITIONS, WITHDRAWAL WITHOUT NOTICE, AND TO ANY SPECIAL LISTING CONDITIONS IMPOSED BY THE PROPERTY OWNER(S). ANY PROJECTIONS, OPINIONS OR ESTIMATES ARE SUBJECT TO UNCERTAINTY AND DO NOT SIGNIFY CURRENT OR FUTURE PROPERTY PERFORMANCE. Wayne Sato Personal Real Estate Corporation, RE/MAX Professionals / Each office is independently owned and operated.

RE/MAX
COMMERCIAL®

1601 Buffalo Pl | Winnipeg, MB | R3T 3K7 | o. 204-957-0500 | f. 204-452-4359 | wpgproperty.ca