



Starting at
\$13.50
PSF

WAYNE SATO

WAYNE SATO PERSONAL REAL ESTATE CORPORATION

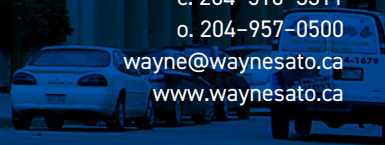
Sales and Leasing Executive

c. 204-510-3311

o. 204-957-0500

wayne@waynesato.ca

www.waynesato.ca



FOR LEASE | 5 DONALD STREET

Up to (±) 12,036 SF

- Prominent Signage Available
- Underground parking
- Central location outside the downtown core
- High traffic location – at the base of the Donald street bridge (traffic count?)
- Security Desk/on-site security
- Cafeteria



Scan QR code to
view website

**RE/MAX
PROFESSIONALS**

1601 Buffalo Place

Winnipeg, MB R3T 3K7

o. 204-957-0500

f. 204-452-4359

wpgproperty.ca



Property Highlights



Number Five Donald is a modern, six-storey office building with a spacious main floor lobby, an advanced tenant directory, a deli service, and onsite security staff. The property includes underground and energized surface parking for tenants and free visitor parking.

This mid-rise building is within minutes of Broadway Avenue, the Osborne Village, The Forks, and the downtown business district, adjacent to the Winnipeg Squash Club and the Winnipeg Winter Club.

- Prominent Signage Available
- Janitorial Services
- Secured Building
- Surface Parking
- Underground Parking
- Major Route Access
- Large Exterior Windows
- Excellent bike access

Suite	Square Footage	Lease Rate	CAM & Tax (2022)	Availability Date
201	3,438	\$13.50	\$14.36	Immediately
202	882	\$13.50	\$14.36	Immediately
300	12,036	\$13.50	\$14.36	Immediately
420	1,073	\$13.50	\$14.36	LEASED
440	1,743	\$13.50	\$14.36	LEASED
510	3,948	\$13.50	\$14.36	Immediately
550	1,832	\$13.50	\$14.36	Immediately
510 + 550	5,780	\$13.50	\$14.36	Immediately
600	4,089	\$13.50	\$14.36	Immediately
640	1,276	\$13.50	\$14.36	Immediately

The Area



Convenient location



Food and Drink within Walking



Groceries and Shopping



Amenities within walking



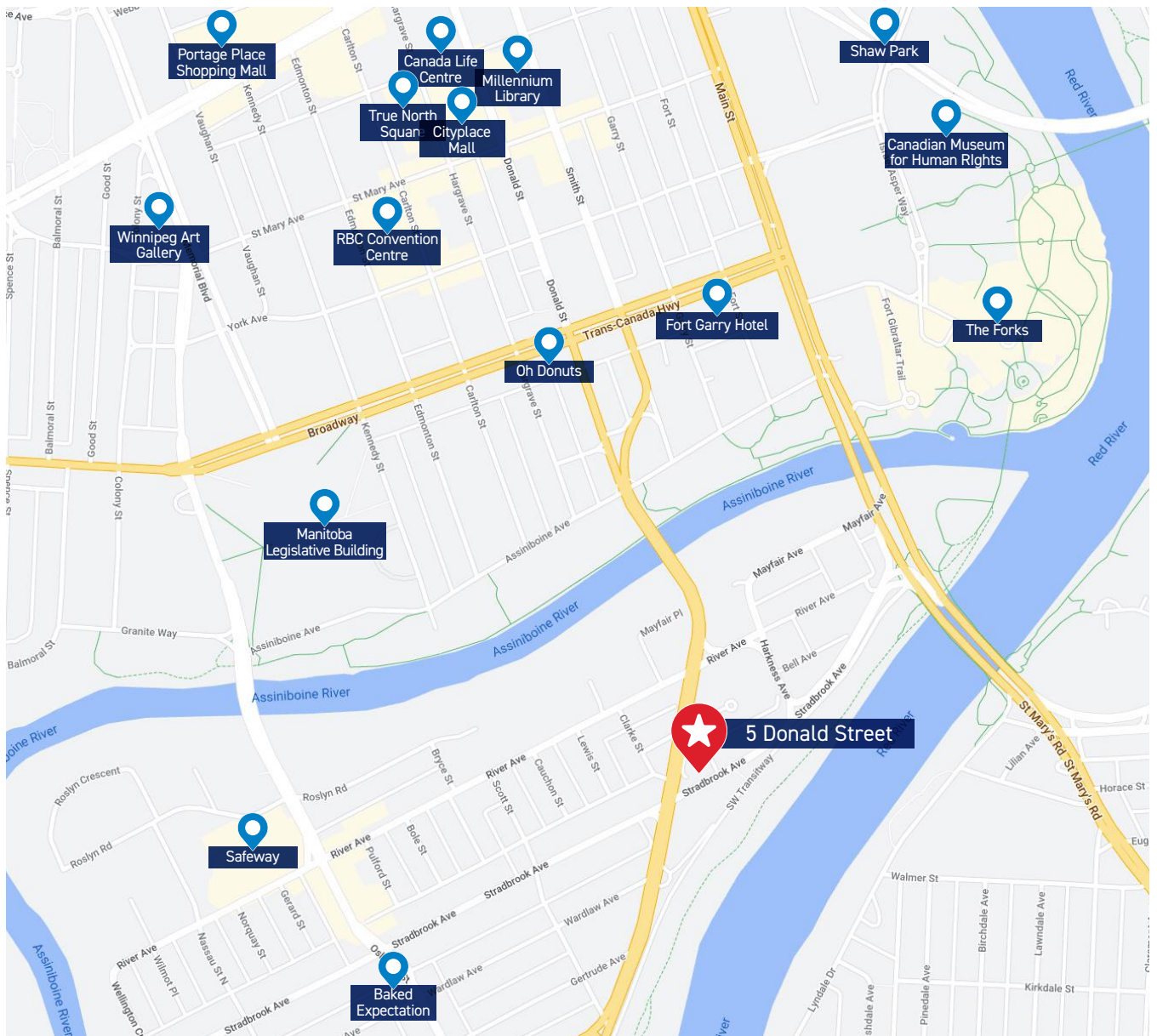
Convenient bike infrastructure



Excellent transit stops

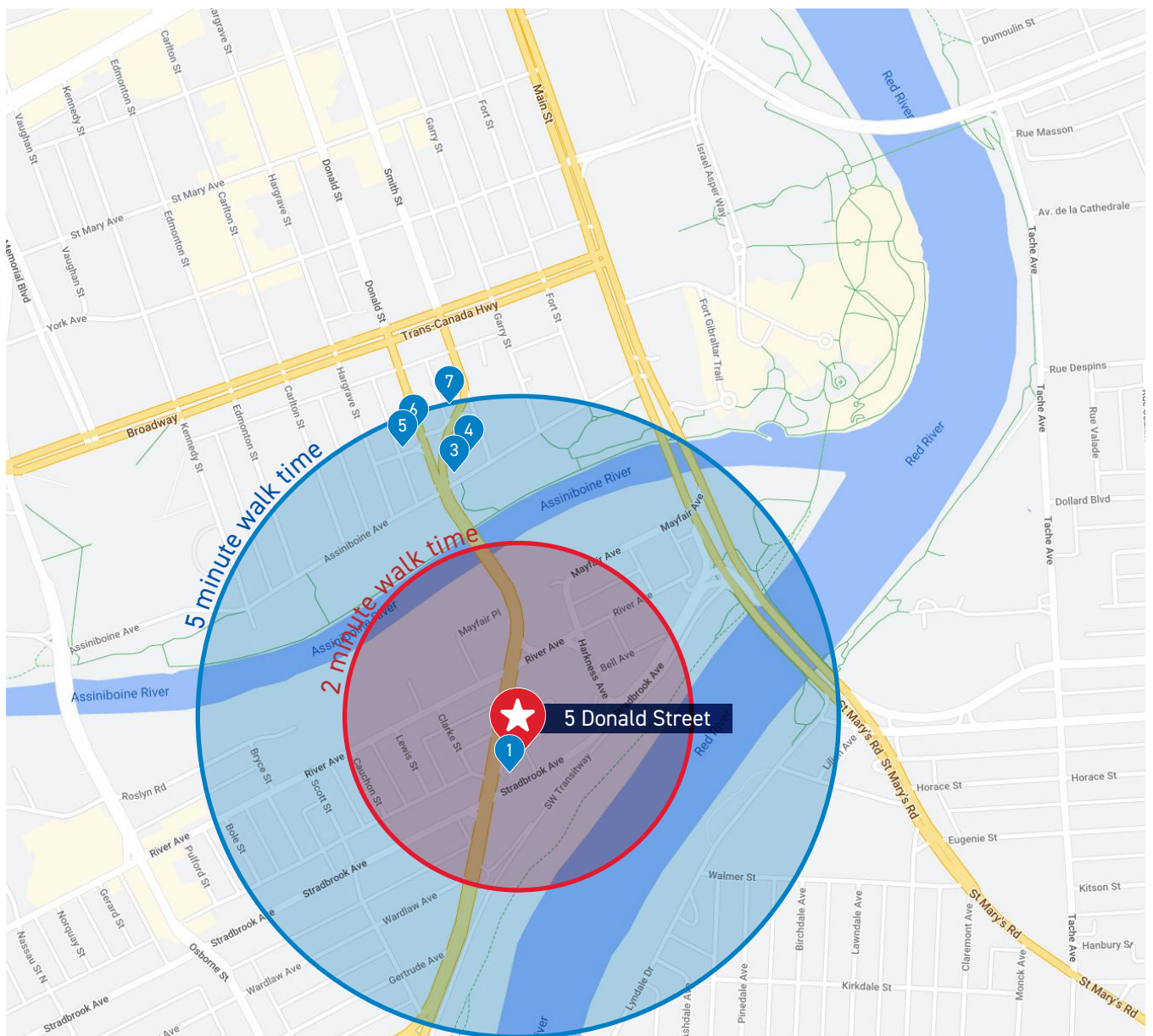


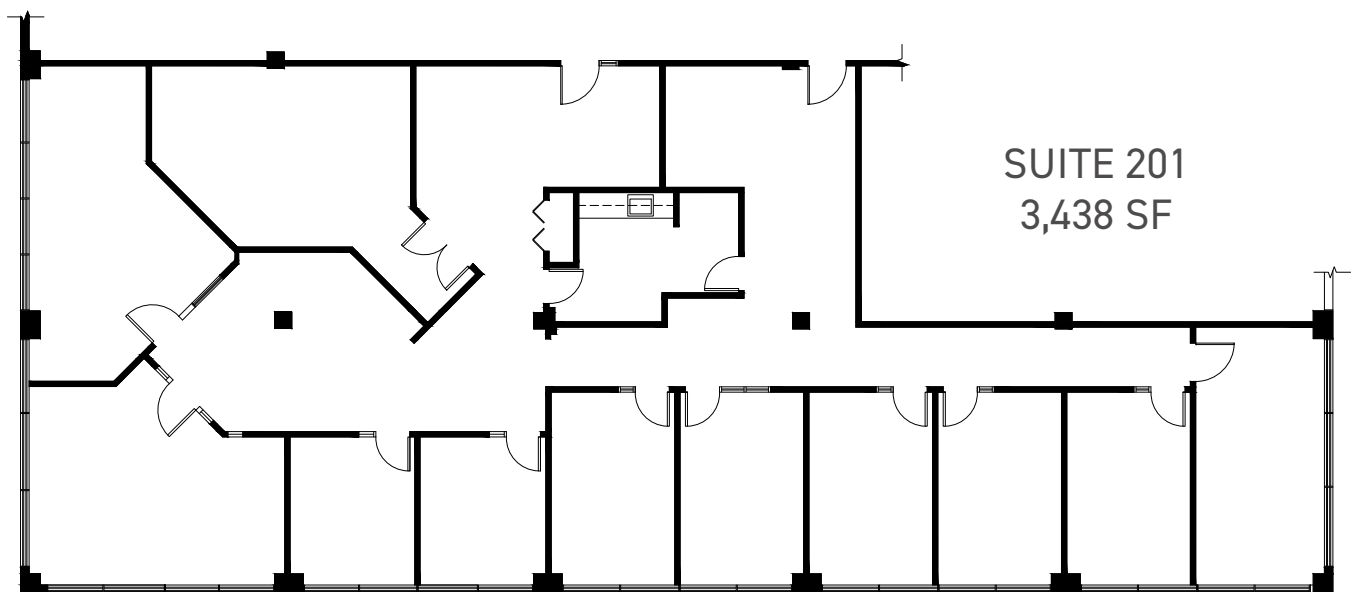
Culture & Entertainment nearby

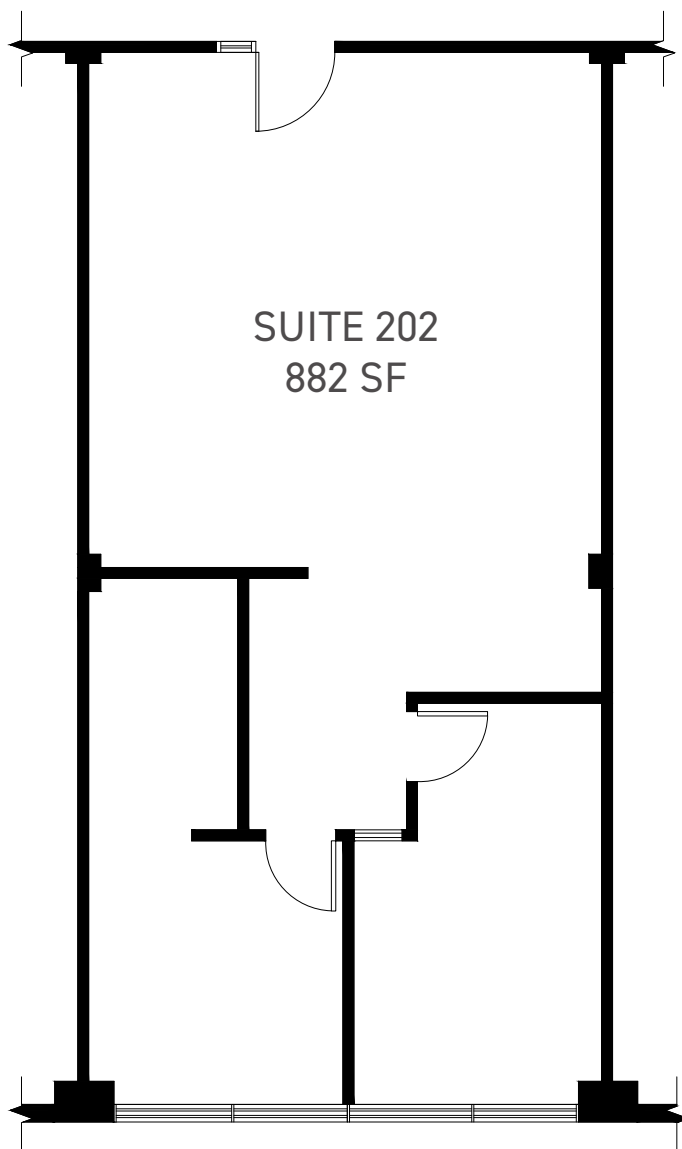


Walk Time & Parking Map

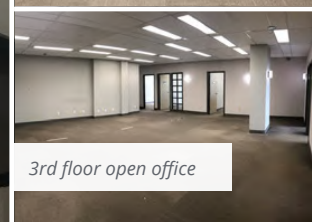
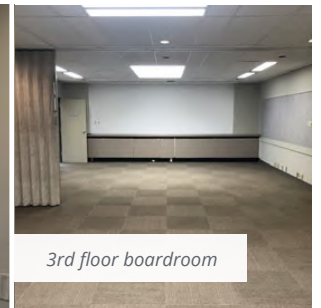
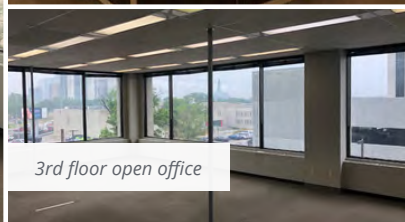
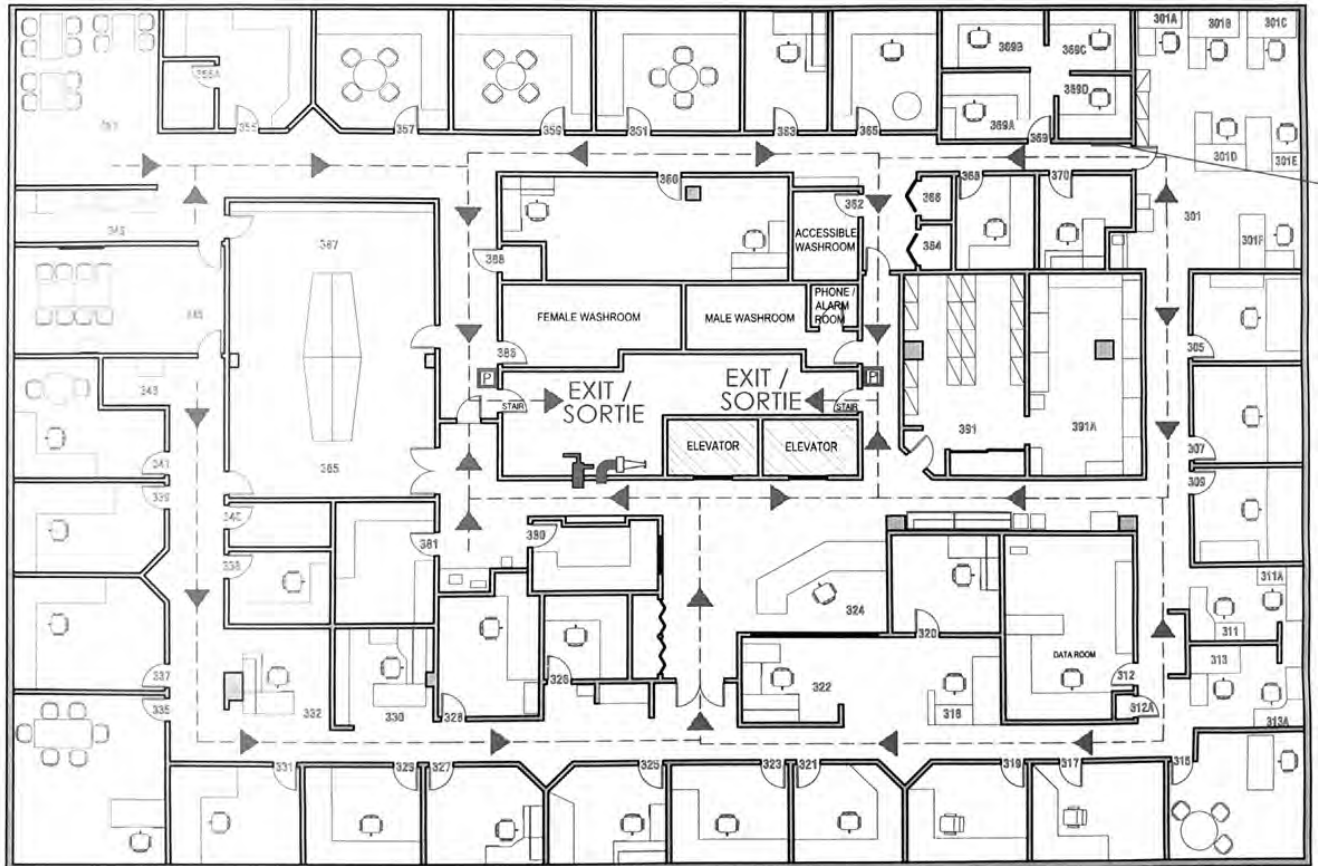
- | | |
|---|--|
| 1 Lot #249, 5 Donald Street | 4 303 Assiniboine Ave Parking |
| 2 Grydpark Parking Lot - Stradbrook/
Osborne | 5 54 Donald St Parking |
| 3 Indigo Parking, 321 Assiniboine Ave | 6 Lot #189, Donald & Assiniboine Parking |
| | 7 36 Smith St Parking |



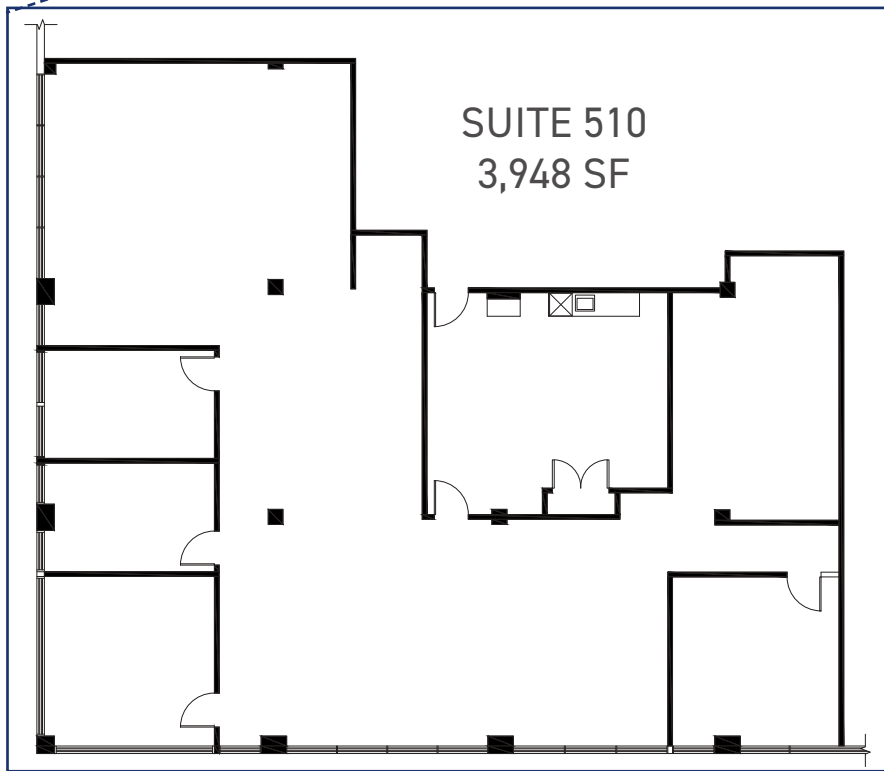
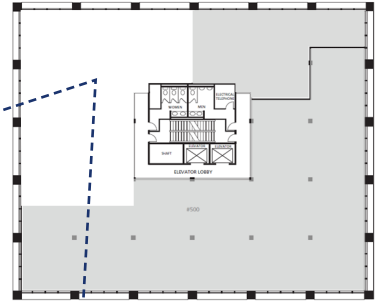


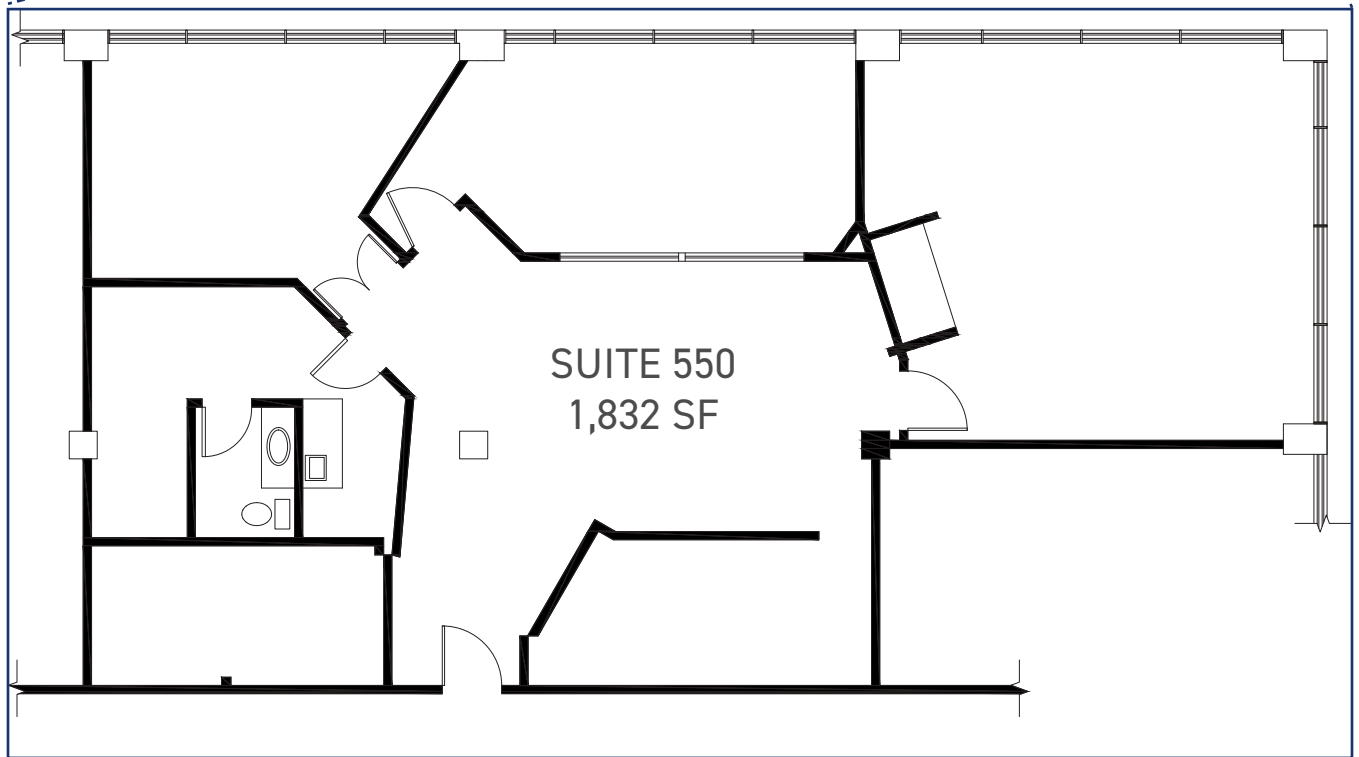
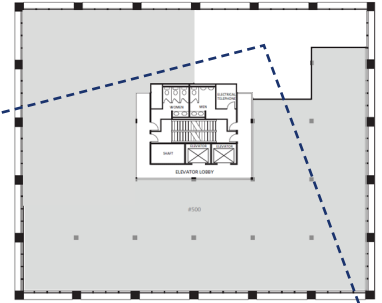


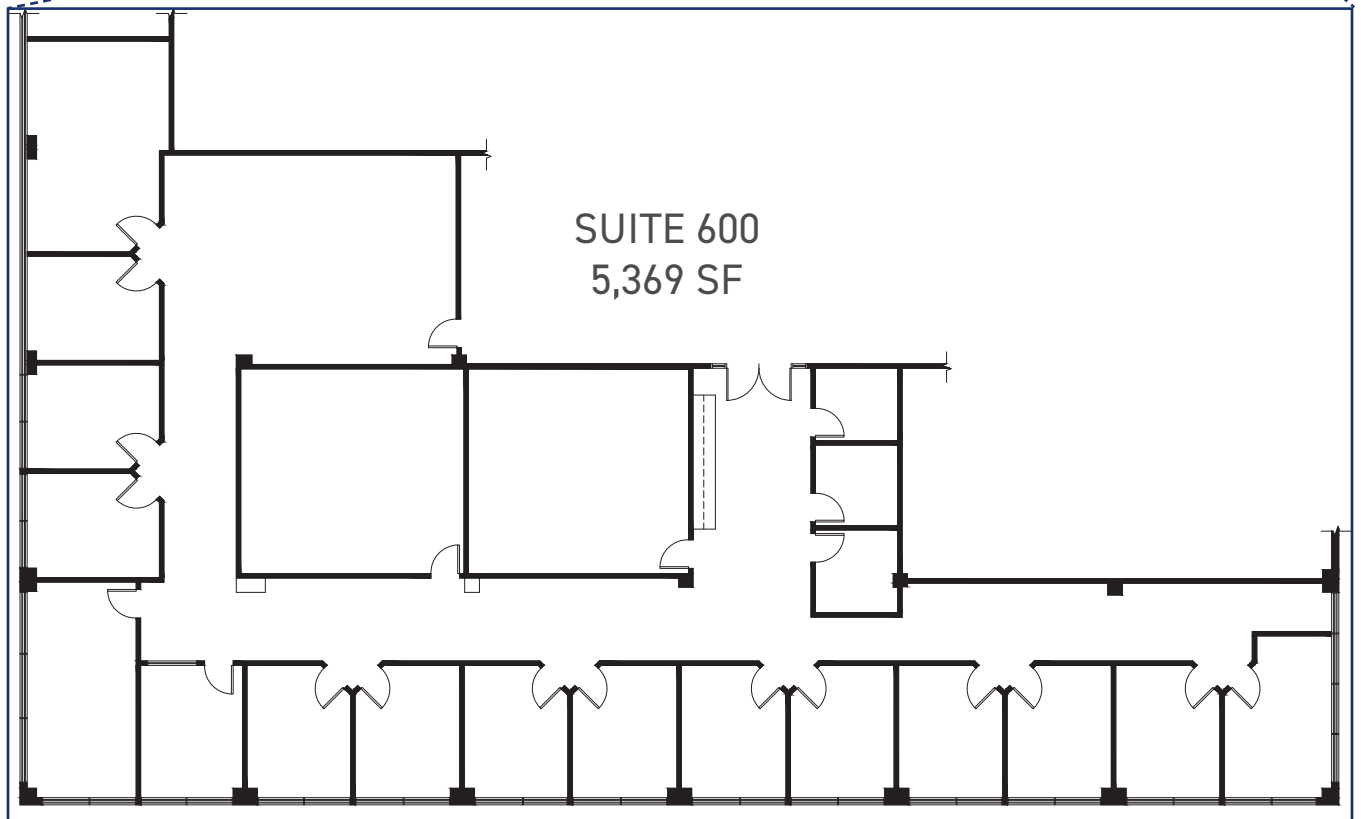
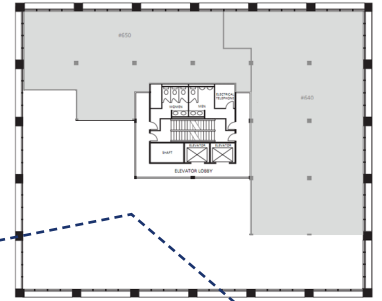
SUITE 300
12,036 SF



This information has been obtained from sources believed to be reliable but has not been verified. NO WARRANTY OR REPRESENTATION, EXPRESS OR IMPLIED, IS MADE AS TO THE CONDITION OF THE PROPERTY (OR PROPERTIES) REFERENCED HEREIN OR AS TO THE ACCURACY OR COMPLETENESS OF THE INFORMATION CONTAINED HEREIN, AND SAME IS SUBMITTED SUBJECT TO ERRORS, OMISSIONS, CHANGE OF PRICE, RENTAL OR OTHER CONDITIONS, WITHDRAWAL WITHOUT NOTICE, AND TO ANY SPECIAL LISTING CONDITIONS IMPOSED BY THE PROPERTY OWNER(S). ANY PROJECTIONS, OPINIONS OR ESTIMATES ARE SUBJECT TO UNCERTAINTY AND DO NOT SIGNIFY CURRENT OR FUTURE PROPERTY PERFORMANCE. Wayne Sato Personal Real Estate Corporation, RE/MAX Professionals / Each office is independently owned and operated.







This information has been obtained from sources believed to be reliable but has not been verified. NO WARRANTY OR REPRESENTATION, EXPRESS OR IMPLIED, IS MADE AS TO THE CONDITION OF THE PROPERTY (OR PROPERTIES) REFERENCED HEREIN OR AS TO THE ACCURACY OR COMPLETENESS OF THE INFORMATION CONTAINED HEREIN, AND SAME IS SUBMITTED SUBJECT TO ERRORS, OMISSIONS, CHANGE OF PRICE, RENTAL OR OTHER CONDITIONS, WITHDRAWAL WITHOUT NOTICE, AND TO ANY SPECIAL LISTING CONDITIONS IMPOSED BY THE PROPERTY OWNER(S). ANY PROJECTIONS, OPINIONS OR ESTIMATES ARE SUBJECT TO UNCERTAINTY AND DO NOT SIGNIFY CURRENT OR FUTURE PROPERTY PERFORMANCE. Wayne Sato Personal Real Estate Corporation. RE/MAX Professionals / Each office is independently owned and operated.



CONTACT:

WAYNE SATO

WAYNE SATO PERSONAL REAL ESTATE CORPORATION

Sales and Leasing Executive

c. 204-510-3311

o. 204-957-0500

wayne@waynesato.ca

www.waynesato.ca



Scan QR code
to view website

This information has been obtained from sources believed to be reliable but has not been verified. NO WARRANTY OR REPRESENTATION, EXPRESS OR IMPLIED, IS MADE AS TO THE CONDITION OF THE PROPERTY (OR PROPERTIES) REFERENCED HEREIN OR AS TO THE ACCURACY OR COMPLETENESS OF THE INFORMATION CONTAINED HEREIN, AND SAME IS SUBMITTED SUBJECT TO ERRORS, OMISSIONS, CHANGE OF PRICE, RENTAL OR OTHER CONDITIONS, WITHDRAWAL WITHOUT NOTICE, AND TO ANY SPECIAL LISTING CONDITIONS IMPOSED BY THE PROPERTY OWNER(S). ANY PROJECTIONS, OPINIONS OR ESTIMATES ARE SUBJECT TO UNCERTAINTY AND DO NOT SIGNIFY CURRENT OR FUTURE PROPERTY PERFORMANCE. Wayne Sato Personal Real Estate Corporation, RE/MAX Professionals / Each office is independently owned and operated.



1601 Buffalo Pl | Winnipeg, MB | R3T 3K7 | o. 204-957-0500 | f. 204-452-4359 | wpgproperty.ca