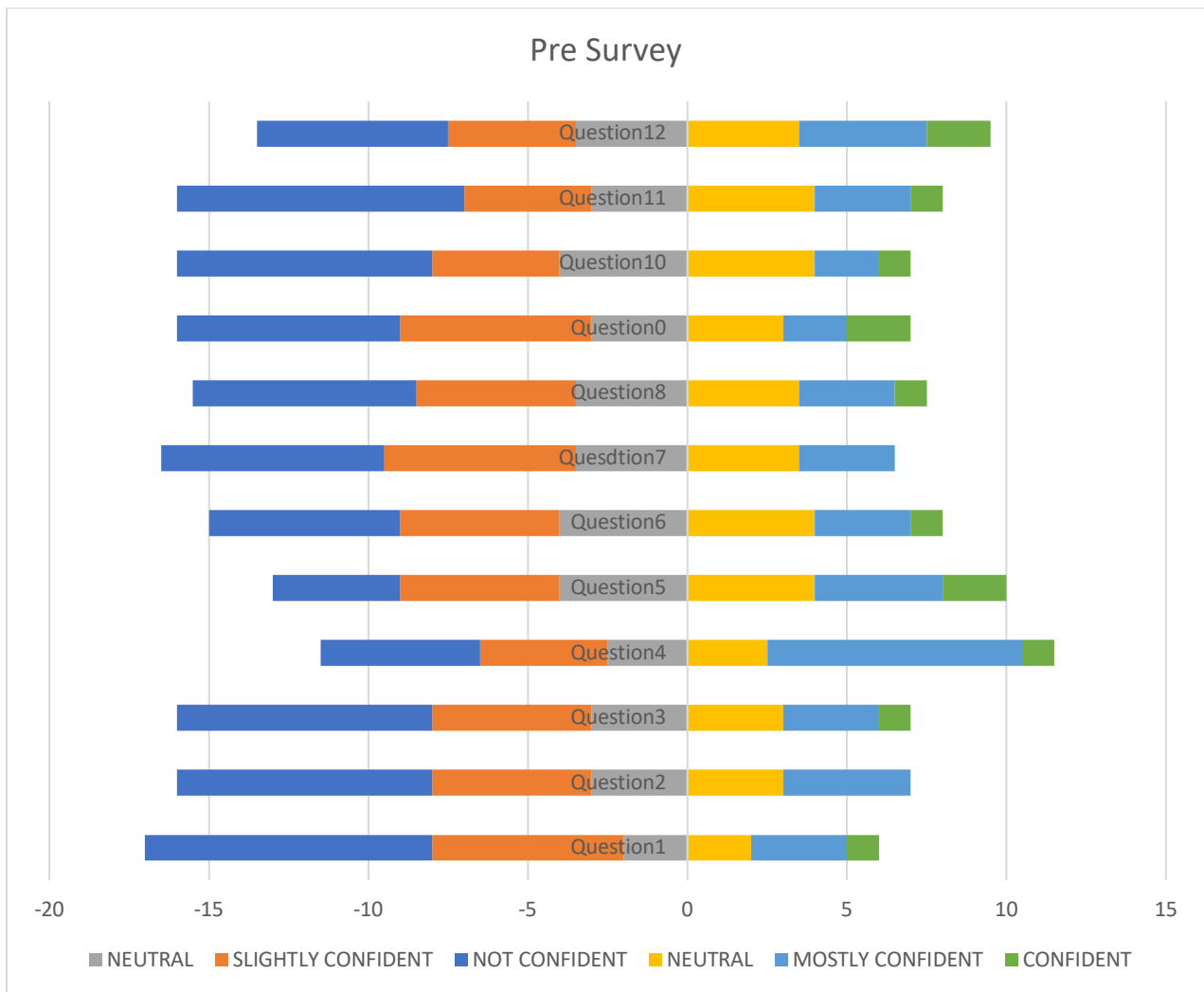
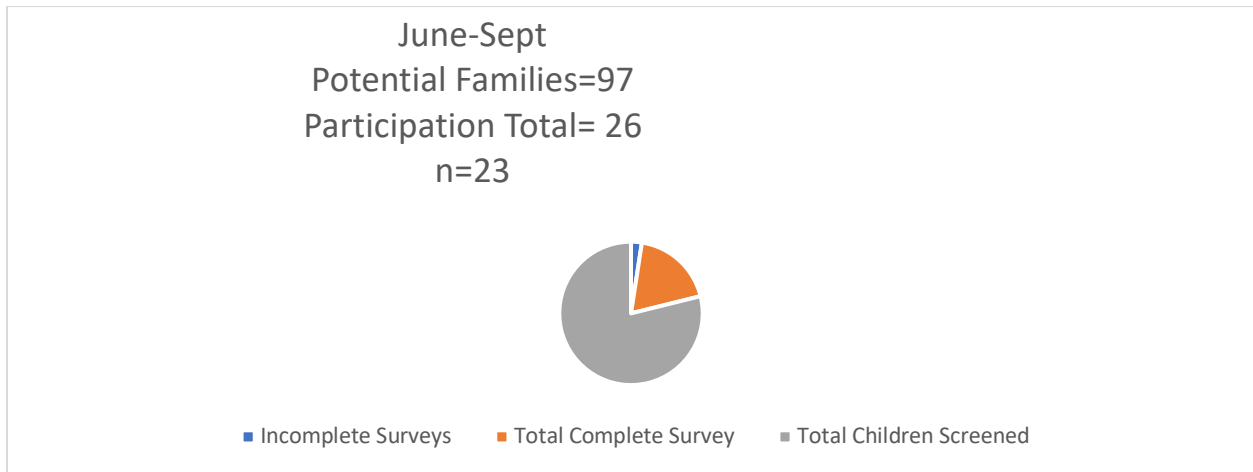
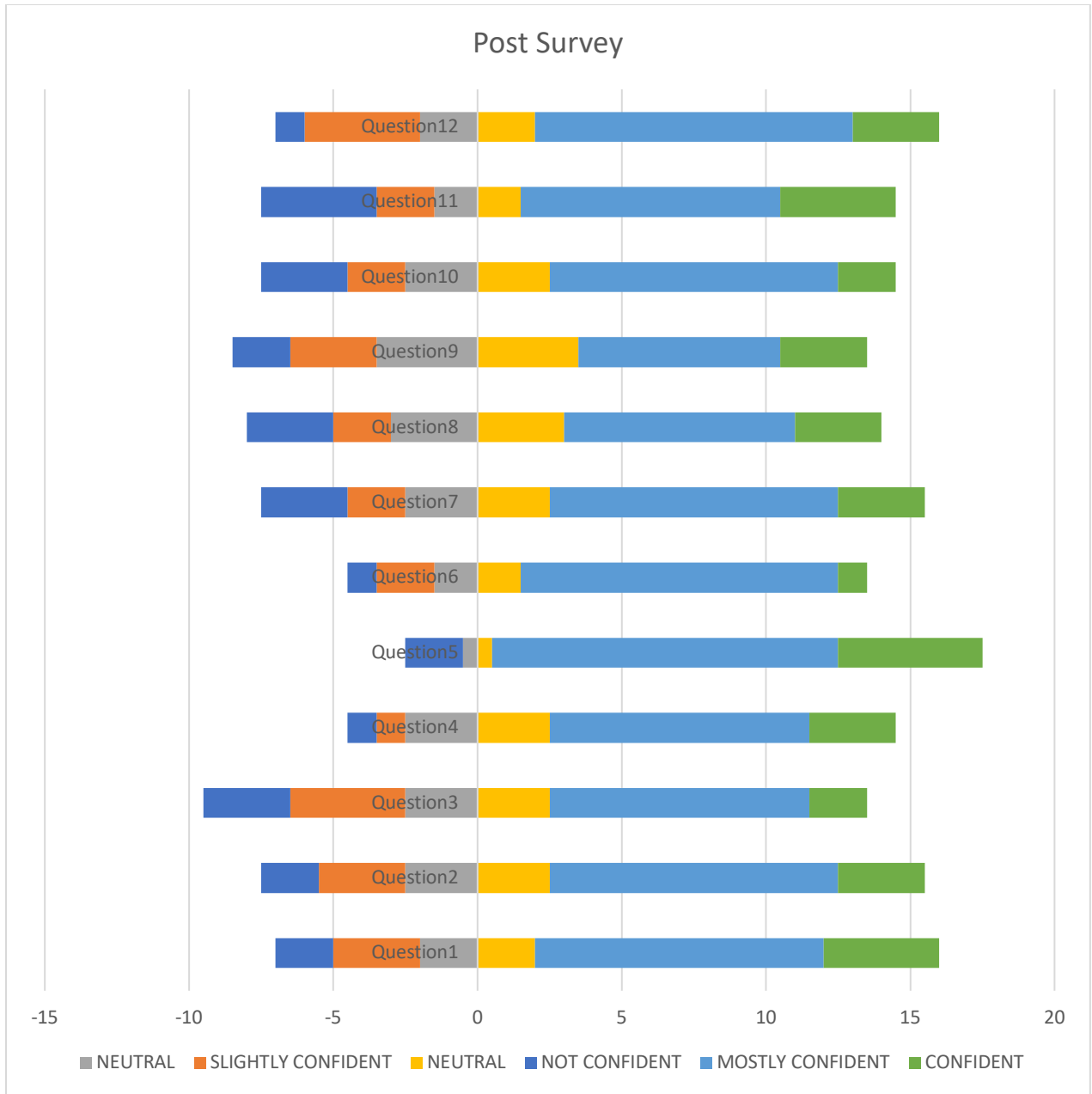


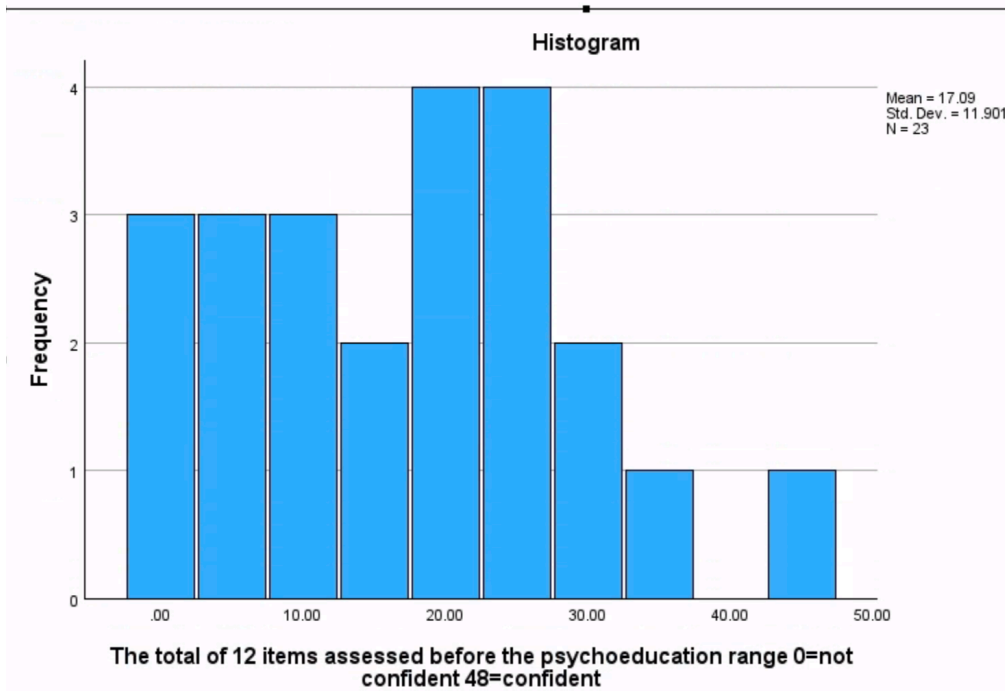
RESULTS



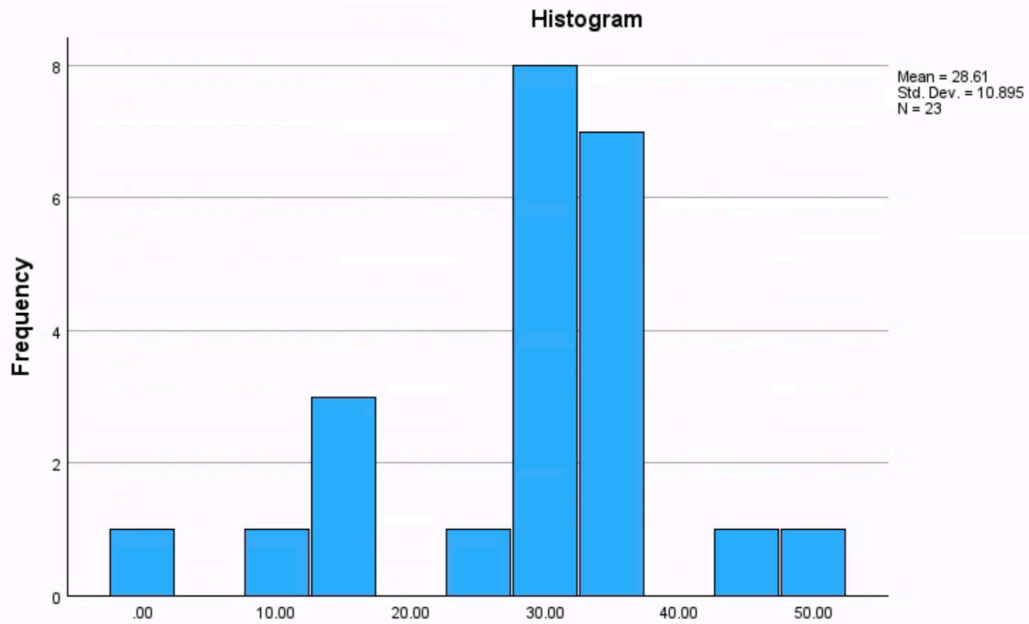


		Pre		Post		+/- Diff	Percent Change
	Individual Questions	Mean	StdDev	Mean	StdDev		
Q1	Name of Illness	1.17	1.23	2.48	1.2	+1.13	+96.3
Q2	Signs and Symptoms	1.26	1.14	2.43	1.12	+1.04	+82.8
Q3	Progress of Illness	1.3	1.22	2.13	1.22	+0.70	+53.3
Q4	Where to go for help	1.83	1.28	2.52	0.95	+0.57	+30.9
Q5	Finding Treatment	1.78	1.2	2.78	1.1	+0.87	+48.8
Q6	Guidance Received	1.48	1.16	2.39	0.9	+0.78	+52.9
Q7	Medications	1.26	1.05	2.35	1.23	+0.96	+75.9
Q8	Course of Medication	1.39	1.2	2.26	1.21	+0.74	+53.1
Q9	Use of Medication	1.39	1.27	2.17	1.1	+0.78	+56.3
Q10	Side Effects	1.3	1.19	2.26	1.18	+0.83	+63.3
Q11	Side Effect Treatment	1.26	1.25	2.35	1.37	+0.91	+72.4
Q12	Overall Confidence	1.65	1.3	2.48	1.08	+0.83	+42.1
	Total	1.42	1.21	2.38	1.14	+0.86	+58.5
Significance p<0.001							

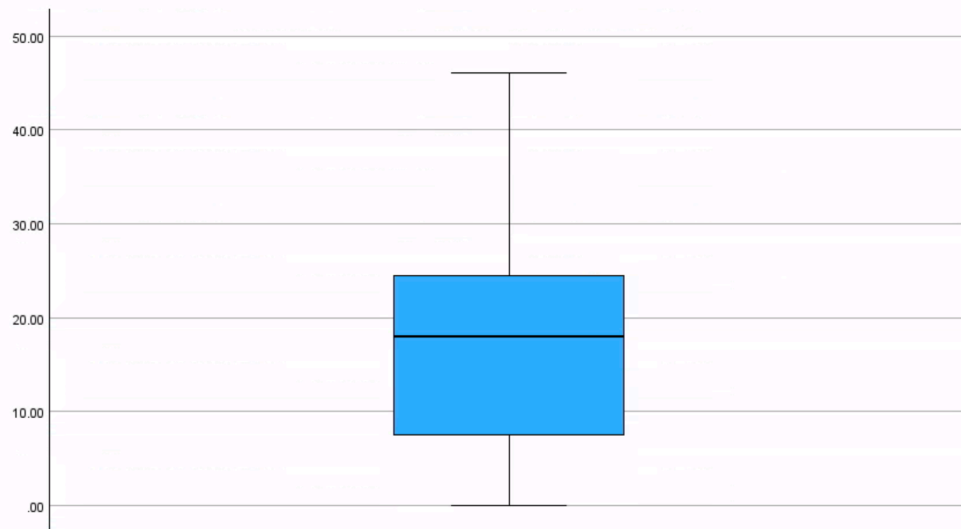
The total of 12 items assessed before the psychoeducation range 0=not confident 48=confident



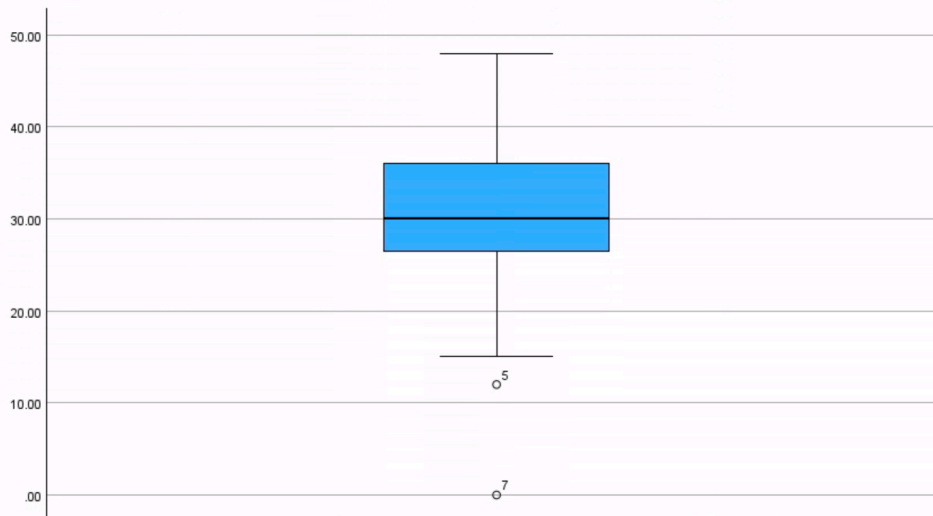
The total of 12 items assessed after the psychoeducation range 0=not confident 48=confident



The total of 12 items assessed after the psychoeducation range 0=not confident 48=confident



The total of 12 items assessed before the psychoeducation range 0=not confident 48=confident



The total of 12 items assessed after the psychoeducation range 0=not confident 48=confident

Descriptives				
		Statistic	Std. Error	
The total of 12 items assessed before the psychoeducation range 0=not confident 48=confident	Mean	17.0870	2.48148	
	95% Confidence Interval for Mean	Lower Bound	11.9407	
		Upper Bound	22.2332	
	5% Trimmed Mean	16.5024		
	Median	18.0000		
	Variance	141.628		
	Std. Deviation	11.90078		
	Minimum	.00		
	Maximum	46.00		
	Range	46.00		
	Interquartile Range	18.00		
	Skewness	.480	.481	
	Kurtosis	.006	.935	
The total of 12 items assessed after the psychoeducation range 0=not confident 48=confident	Mean	28.6087	2.27179	
	95% Confidence Interval for Mean	Lower Bound	23.8973	
		Upper Bound	33.3201	
	5% Trimmed Mean	29.0628		
	Median	30.0000		
	Variance	118.704		
	Std. Deviation	10.89512		
	Minimum	.00		
	Maximum	48.00		
	Range	48.00		
	Interquartile Range	11.00		
	Skewness	-.863	.481	
	Kurtosis	1.047	.935	

Tests of Normality

	Kolmogorov-Smirnov ^a			Shapiro-Wilk		
	Statistic	df	Sig.	Statistic	df	Sig.
The total of 12 items assessed before the psychoeducation range 0=not confident 48=confident	.099	23	.200*	.961	23	.478
The total of 12 items assessed after the psychoeducation range 0=not confident 48=confident	.217	23	.006	.915	23	.053

*. This is a lower bound of the true significance.

a. Lilliefors Significance Correction

Case Processing Summary

	Valid		Cases Missing		Total	
	N	Percent	N	Percent	N	Percent
The total of 12 items assessed before the psychoeducation range 0=not confident 48=confident	23	100.0%	0	0.0%	23	100.0%
The total of 12 items assessed after the psychoeducation range 0=not confident 48=confident	23	100.0%	0	0.0%	23	100.0%

T-Test

Paired Samples Statistics

		Mean	N	Std. Deviation	Std. Error Mean
Pair 1	The total of 12 items assessed before the psychoeducation range 0=not confident 48=confident	17.0870	23	11.90078	2.48148
	The total of 12 items assessed after the psychoeducation range 0=not confident 48=confident	28.6087	23	10.89512	2.27179

Paired Samples Correlations

		N	Correlation	Significance	
				One-Sided p	Two-Sided p
Pair 1	The total of 12 items assessed before the psychoeducation range 0=not confident 48=confident & The total of 12 items assessed after the psychoeducation range 0=not confident 48=confident	23	.620	<.001	.002

NPar Tests

Wilcoxon Signed Ranks Test

		Ranks		
		N	Mean Rank	Sum of Ranks
The total of 12 items assessed after the psychoeducation range 0=not confident 48=confident - The total of 12 items assessed before the psychoeducation range 0=not confident 48=confident	Negative Ranks	1 ^a	1.50	1.50
	Positive Ranks	20 ^b	11.48	229.50
	Ties	2 ^c		
	Total	23		

- The total of 12 items assessed after the psychoeducation range 0=not confident 48=confident < The total of 12 items assessed before the psychoeducation range 0=not confident 48=confident
- The total of 12 items assessed after the psychoeducation range 0=not confident 48=confident > The total of 12 items assessed before the psychoeducation range 0=not confident 48=confident
- The total of 12 items assessed after the psychoeducation range 0=not confident 48=confident = The total of 12 items assessed before the psychoeducation range 0=not confident 48=confident

Test Statistics^a

The total of 12 items assessed after the psychoeducation range 0=not confident 48=confident - The total of 12 items assessed before the psychoeducation range 0=not confident 48=confident	Z	-3.966 ^b
	Asymp. Sig. (2-tailed)	<.001

a. Wilcoxon Signed Ranks Test

b. Based on negative ranks.

Descriptive Statistics

	N	Minimum	Maximum	Mean	Std. Deviation
What is your confidence level on naming your child's illness?	23	0	4	1.17	1.230
Q2Pre	23	0	3	1.26	1.137
Q3Pre	23	0	4	1.30	1.222
Q4Pre	23	0	4	1.83	1.267
Q5Pre	23	0	4	1.78	1.204
Q6Pre	23	0	4	1.48	1.163
Q7Pre	23	0	3	1.26	1.054
Q8Pre	23	0	4	1.39	1.196
Q9Pre	23	0	4	1.39	1.270
Q10Pre	23	0	4	1.30	1.185
Q11Pre	23	0	4	1.26	1.251
Q12Pre	23	0	4	1.65	1.301
Q1Post	23	0	4	2.48	1.201
Q2Post	23	0	4	2.43	1.121
Q3Post	23	0	4	2.13	1.217
Q4Post	23	0	4	2.52	.947
Q5Post	23	0	4	2.78	1.085
Q6Post	23	0	4	2.39	.891
Q7Post	23	0	4	2.35	1.229
Q8Post	23	0	4	2.26	1.214
Q9Post	23	0	4	2.17	1.072
Q10Post	23	0	4	2.26	1.176
Q11Post	23	0	4	2.35	1.369
Q12Post	23	0	4	2.48	1.082
Valid N (listwise)	23				

Paired Samples Test

		Paired Differences					t	df	Significance	
		Mean	Std. Deviation	Std. Error Mean	95% Confidence Interval of the Difference				One-Sided p	Two-Sided p
					Lower	Upper				
Pair 1	The total of 12 items assessed before the psychoeducation range 0=not confident 48=confident - The total of 12 items assessed after the psychoeducation range 0=not confident 48=confident	-11.52174	9.97210	2.07933	-15.83400	-7.20948	-5.541	22	<.001	<.001

Paired Samples Effect Sizes

		Standardizer ^a	Point Estimate	95% Confidence Interval		
				Lower	Upper	
Pair 1	The total of 12 items assessed before the psychoeducation range 0=not confident 48=confident - The total of 12 items assessed after the psychoeducation range 0=not confident 48=confident	Cohen's d	9.97210	-1.155	-1.679	-.616
		Hedges' correction	10.32895	-1.115	-1.621	-.595

a. The denominator used in estimating the effect sizes.
 Cohen's d uses the sample standard deviation of the mean difference.
 Hedges' correction uses the sample standard deviation of the mean difference, plus a correction factor.